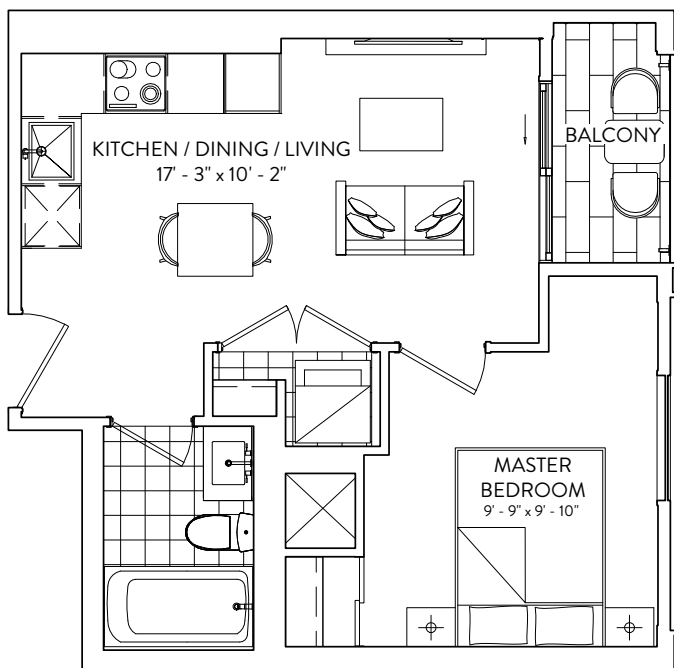


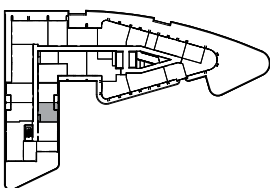
1B 420

1 BEDROOM | 1 BATHROOM

INTERIOR: 420 SF | EXTERIOR: 30 SF



FLOOR 8

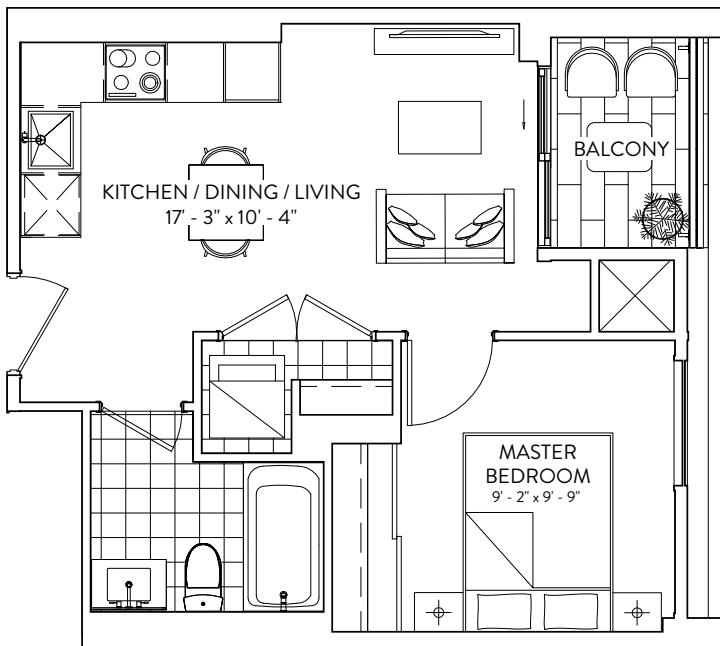


This plan is not to scale and is subject to architectural review and revision. The number of units per Floor and the number of floors may be reduced or increased at the vendor's sole discretion without notice. The purchaser acknowledges that the actual unit purchased may be a reverse layout to the plan shown. All materials, specifications, details and dimensions, if any, are approximate and subject to change without notice in order to comply with building site conditions and municipal, structural, vendor and/or architectural requirements. Actual living areas may vary from floor area stated. Floor areas have been measured and may vary in accordance with Bulletin #22 published by the Tarion Warranty Corporation. Bulkheads are not shown on this plan and may be located in areas of the Unit as required to provide venting and mechanical systems. Balconies, Terraces and Patios, if any, are exclusive use common elements shown for display purposes only and location and size are subject to change without notice. Window location, size and type may vary without notice. The length, width and directional position of the flooring are for illustration purposes only and may vary without notice. E.&O.E.

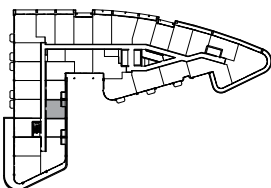
1B 431

1 BEDROOM | 1 BATHROOM

INTERIOR: 431 SF | EXTERIOR: 34 SF



FLOORS 5-7

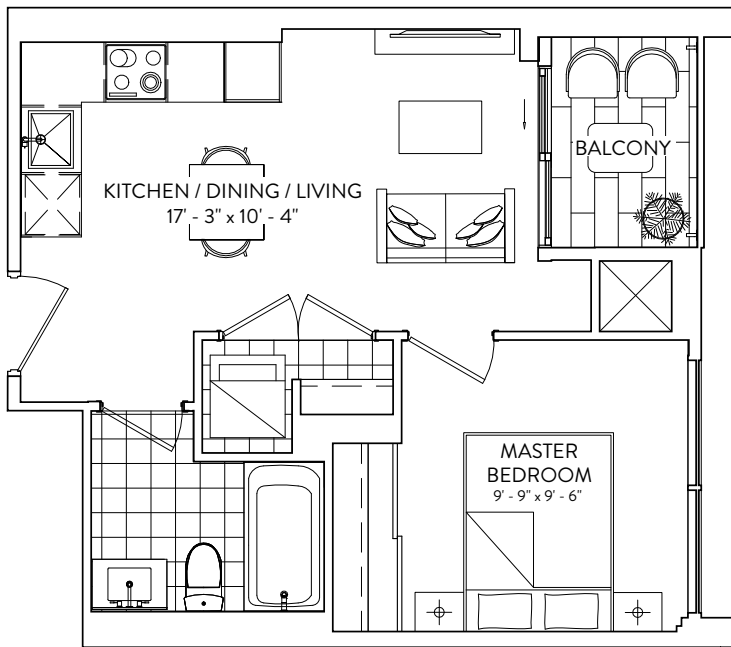


This plan is not to scale and is subject to architectural review and revision. The number of units per Floor and the number of floors may be reduced or increased at the vendor's sole discretion without notice. The purchaser acknowledges that the actual unit purchased may be a reverse layout to the plan shown. All materials, specifications, details and dimensions, if any, are approximate and subject to change without notice in order to comply with building site conditions and municipal, structural, vendor and/or architectural requirements. Actual living areas may vary from floor area stated. Floor areas have been measured and may vary in accordance with Bulletin #22 published by the Tarion Warranty Corporation. Bulkheads are not shown on this plan and may be located in areas of the Unit as required to provide venting and mechanical systems. Balconies, Terraces and Patios, if any, are exclusive use common elements shown for display purposes only and location and size are subject to change without notice. Window location, size and type may vary without notice. The length, width and directional position of the flooring are for illustration purposes only and may vary without notice. E.&O.E.

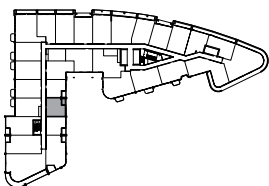
1B 441

1 BEDROOM | 1 BATHROOM

INTERIOR: 441 SF | EXTERIOR: 34 SF



FLOOR 4



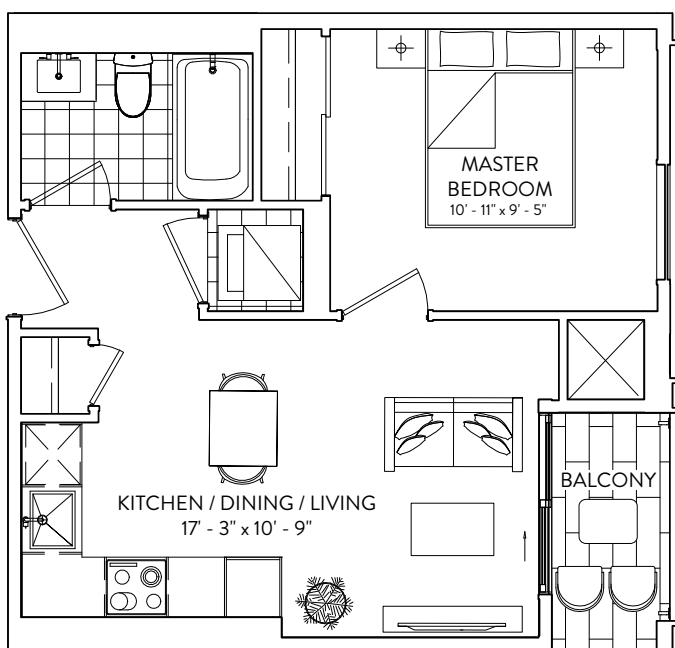
This plan is not to scale and is subject to architectural review and revision. The number of units per Floor and the number of floors may be reduced or increased at the vendor's sole discretion without notice. The purchaser acknowledges that the actual unit purchased may be a reverse layout to the plan shown. All materials, specifications, details and dimensions, if any, are approximate and subject to change without notice in order to comply with building site conditions and municipal, structural, vendor and/or architectural requirements. Actual living areas may vary from floor area stated. Floor areas have been measured and may vary in accordance with Bulletin #22 published by the Tarion Warranty Corporation. Bulkheads are not shown on this plan and may be located in areas of the Unit as required to provide venting and mechanical systems. Balconies, Terraces and Patios, if any, are exclusive use common elements shown for display purposes only and location and size are subject to change without notice. Window location, size and type may vary without notice. The length, width and directional position of the flooring are for illustration purposes only and may vary without notice. E.&O.E.

1B 444

1 BEDROOM | 1 BATHROOM

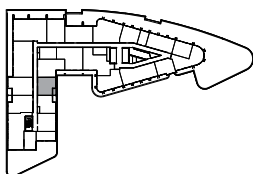
INTERIOR: 444 SF | EXTERIOR: 32 SF

GALLERIA



BALCONY
FLOORS 9-10 | EXTERIOR: 32 SF

FLOORS 8-10



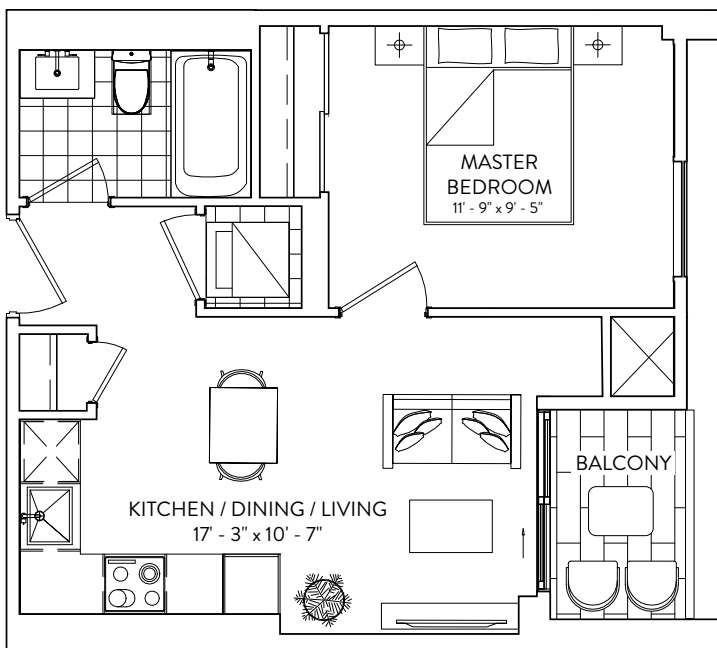
This plan is not to scale and is subject to architectural review and revision. The number of units per Floor and the number of floors may be reduced or increased at the vendor's sole discretion without notice. The purchaser acknowledges that the actual unit purchased may be a reverse layout to the plan shown. All materials, specifications, details and dimensions, if any, are approximate and subject to change without notice in order to comply with building site conditions and municipal, structural, vendor and/or architectural requirements. Actual living areas may vary from floor area stated. Floor areas have been measured and may vary in accordance with Bulletin #22 published by the Tarion Warranty Corporation. Bulkheads are not shown on this plan and may be located in areas of the Unit as required to provide venting and mechanical systems. Balconies, Terraces and Patios, if any, are exclusive use common elements shown for display purposes only and location and size are subject to change without notice. Window location, size and type may vary without notice. The length, width and directional position of the flooring are for illustration purposes only and may vary without notice. E.&O.E.

ELADCANADA

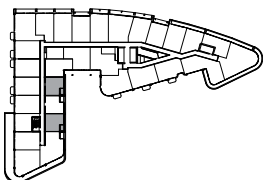
1B 452

1 BEDROOM | 1 BATHROOM

INTERIOR: 452 SF | EXTERIOR: 32 SF



FLOORS 5-7

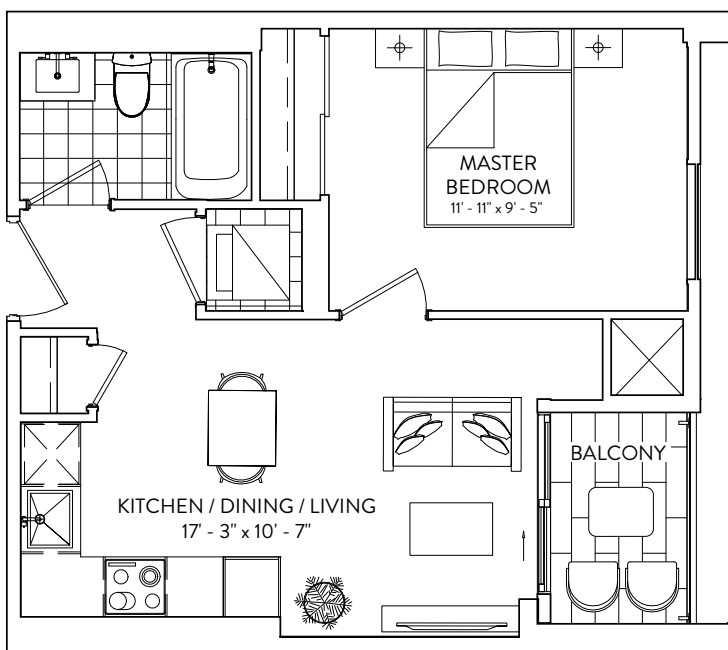


This plan is not to scale and is subject to architectural review and revision. The number of units per Floor and the number of floors may be reduced or increased at the vendor's sole discretion without notice. The purchaser acknowledges that the actual unit purchased may be a reverse layout to the plan shown. All materials, specifications, details and dimensions, if any, are approximate and subject to change without notice in order to comply with building site conditions and municipal, structural, vendor and/or architectural requirements. Actual living areas may vary from floor area stated. Floor areas have been measured and may vary in accordance with Bulletin #22 published by the Taron Warranty Corporation. Bulkheads are not shown on this plan and may be located in areas of the Unit as required to provide venting and mechanical systems. Balconies, Terraces and Patios, if any, are exclusive use common elements shown for display purposes only and location and size are subject to change without notice. Window location, size and type may vary without notice. The length, width and directional position of the flooring are for illustration purposes only and may vary without notice. E.&O.E.

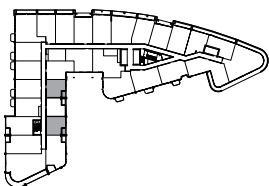
1B 462

1 BEDROOM | 1 BATHROOM

INTERIOR: 462 SF | EXTERIOR: 32 SF



FLOOR 4

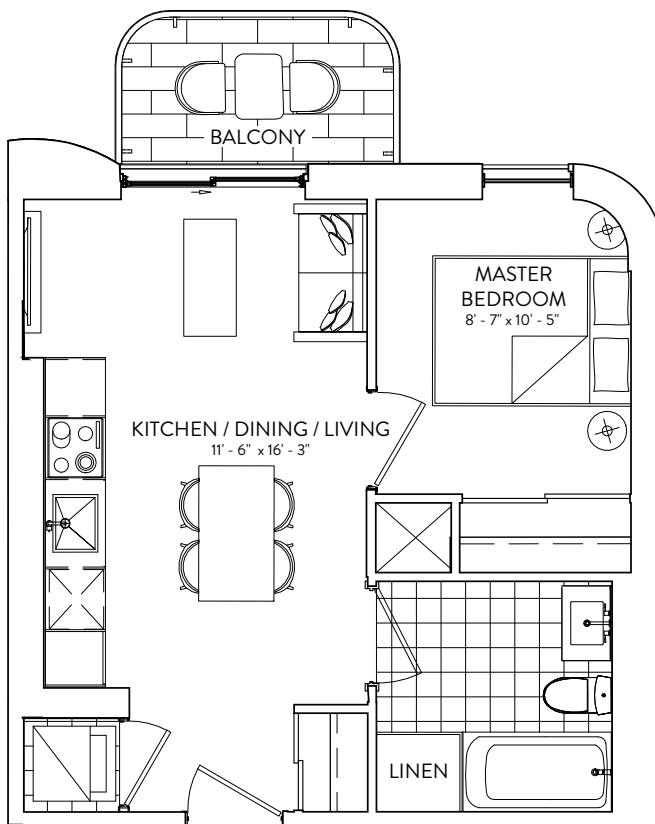


This plan is not to scale and is subject to architectural review and revision. The number of units per Floor and the number of floors may be reduced or increased at the vendor's sole discretion without notice. The purchaser acknowledges that the actual unit purchased may be a reverse layout to the plan shown. All materials, specifications, details and dimensions, if any, are approximate and subject to change without notice in order to comply with building site conditions and municipal, structural, vendor and/or architectural requirements. Actual living areas may vary from floor area stated. Floor areas have been measured and may vary in accordance with Bulletin #22 published by the Taroni Warranty Corporation. Bulkheads are not shown on this plan and may be located in areas of the Unit as required to provide venting and mechanical systems. Balconies, Terraces and Patios, if any, are exclusive use common elements shown for display purposes only and location and size are subject to change without notice. Window location, size and type may vary without notice. The length, width and directional position of the flooring are for illustration purposes only and may vary without notice. E.&O.E.

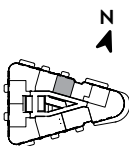
1B 472

1 BEDROOM | 1 BATHROOM

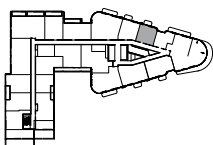
INTERIOR: 472 SF | EXTERIOR: 43 SF



FLOORS 11-31



FLOORS 9-10

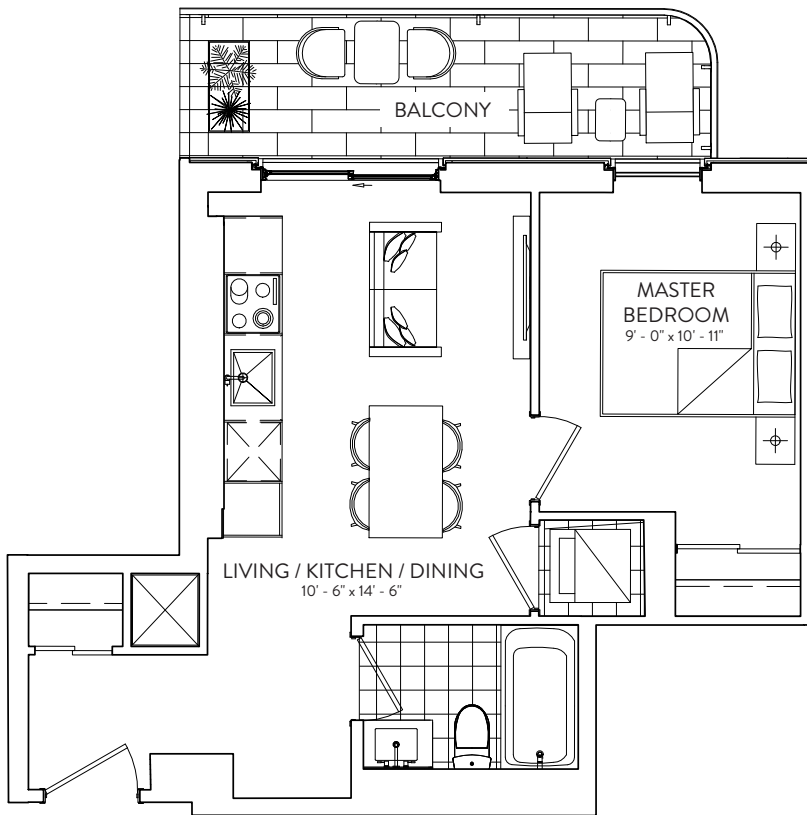


This plan is not to scale and is subject to architectural review and revision. The number of units per Floor and the number of floors may be reduced or increased at the vendor's sole discretion without notice. The purchaser acknowledges that the actual unit purchased may be a reverse layout to the plan shown. All materials, specifications, details and dimensions, if any, are approximate and subject to change without notice in order to comply with building site conditions and municipal, structural, vendor and/or architectural requirements. Actual living areas may vary from floor area stated. Floor areas have been measured and may vary in accordance with Bulletin #22 published by the Tarion Warranty Corporation. Bulkheads are not shown on this plan and may be located in areas of the Unit as required to provide venting and mechanical systems. Balconies, Terraces and Patios, if any, are exclusive use common elements shown for display purposes only and location and size are subject to change without notice. Window location, size and type may vary without notice. The length, width and directional position of the flooring are for illustration purposes only and may vary without notice. E.&O.E.

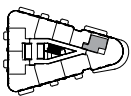
1B 473

1 BEDROOM | 1 BATHROOM

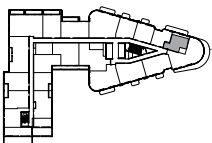
INTERIOR: 473 SF | EXTERIOR: 86 SF



FLOORS 11-27



FLOORS 9-10




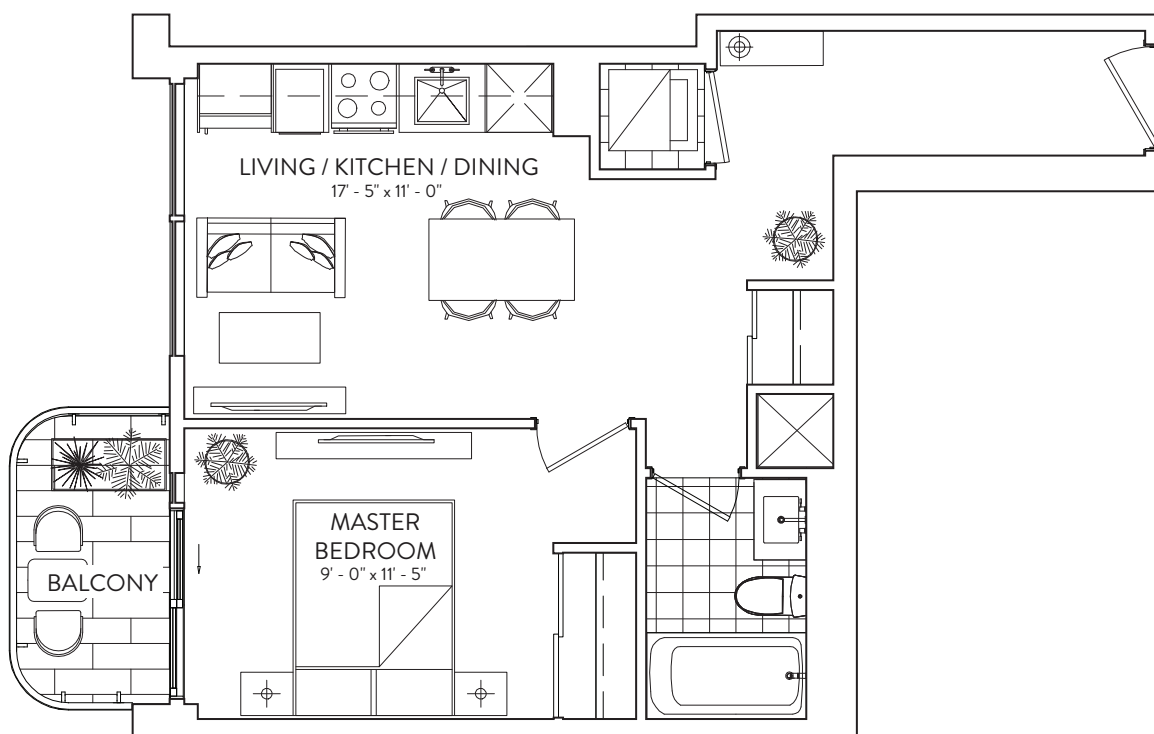
This plan is not to scale and is subject to architectural review and revision. The number of units per Floor and the number of floors may be reduced or increased at the vendor's sole discretion without notice. The purchaser acknowledges that the actual unit purchased may be a reverse layout to the plan shown. All materials, specifications, details and dimensions, if any, are approximate and subject to change without notice in order to comply with building site conditions and municipal, structural, vendor and/or architectural requirements. Actual living areas may vary from floor area stated. Floor areas have been measured and may vary in accordance with Bulletin #22 published by the Tarion Warranty Corporation. Bulkheads are not shown on this plan and may be located in areas of the Unit as required to provide venting and mechanical systems. Balconies, Terraces and Patios, if any, are exclusive use common elements shown for display purposes only and location and size are subject to change without notice. Window location, size and type may vary without notice. The length, width and directional position of the flooring are for illustration purposes only and may vary without notice. E.&O.E.

1B 517

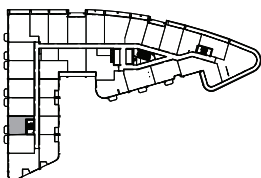
1 BEDROOM | 1 BATHROOM

INTERIOR: 517 SF | EXTERIOR: 40 SF

GALLERIA 



FLOORS 6-7



This plan is not to scale and is subject to architectural review and revision. The number of units per Floor and the number of floors may be reduced or increased at the vendor's sole discretion without notice. The purchaser acknowledges that the actual unit purchased may be a reverse layout to the plan shown. All materials, specifications, details and dimensions, if any, are approximate and subject to change without notice in order to comply with building site conditions and municipal, structural, vendor and/or architectural requirements. Actual living areas may vary from floor area stated. Floor areas have been measured and may vary in accordance with Bulletin #22 published by the Tarion Warranty Corporation. Bulkheads are not shown on this plan and may be located in areas of the Unit as required to provide venting and mechanical systems. Balconies, Terraces and Patios, if any, are exclusive use common elements shown for display purposes only and location and size are subject to change without notice. Window location, size and type may vary without notice. The length, width and directional position of the flooring are for illustration purposes only and may vary without notice. E.&O.E.

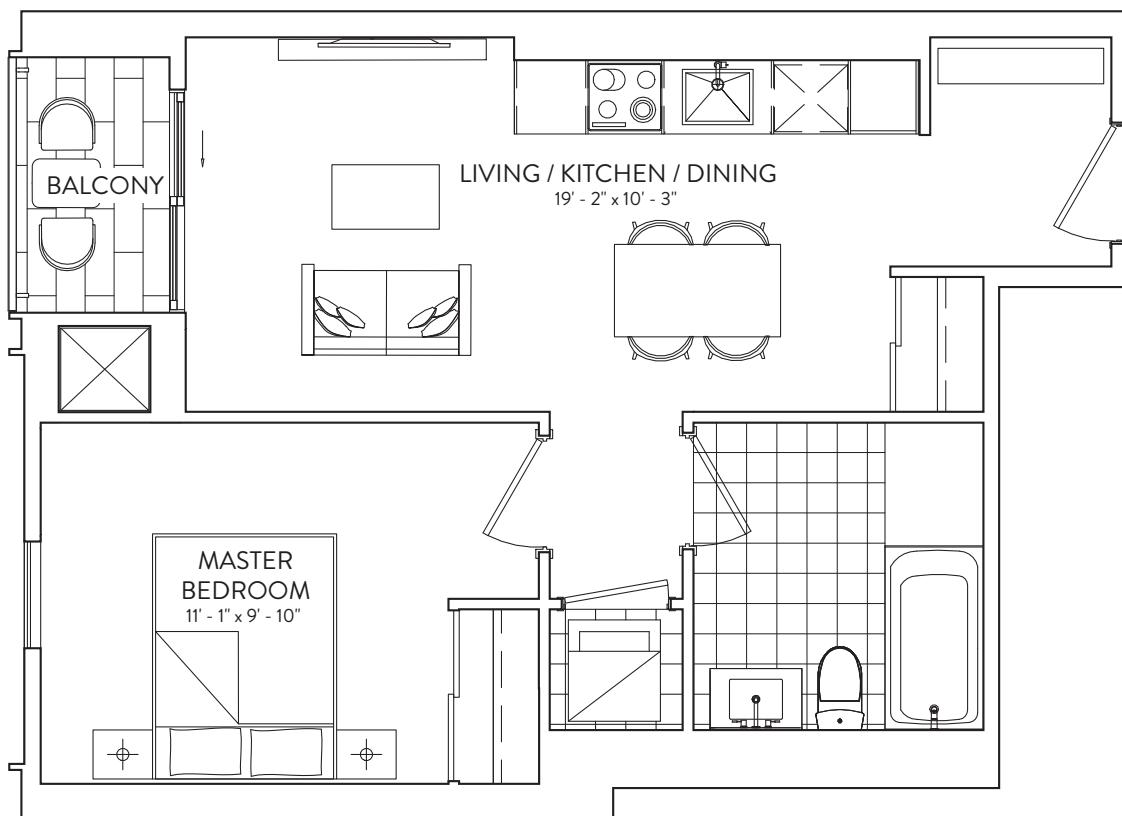
ELADCANADA

1B 555

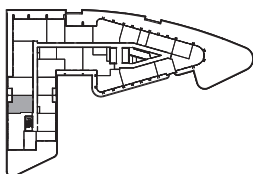
1 BEDROOM | 1 BATHROOM

INTERIOR: 555 SF | EXTERIOR: 43 SF

GALLERIA



FLOORS 8-9



This plan is not to scale and is subject to architectural review and revision. The number of units per Floor and the number of floors may be reduced or increased at the vendor's sole discretion without notice. The purchaser acknowledges that the actual unit purchased may be a reverse layout to the plan shown. All materials, specifications, details and dimensions, if any, are approximate and subject to change without notice in order to comply with building site conditions and municipal, structural, vendor and/or architectural requirements. Actual living areas may vary from floor area stated. Floor areas have been measured and may vary in accordance with Bulletin #22 published by the Tarion Warranty Corporation. Bulkheads are not shown on this plan and may be located in areas of the Unit as required to provide venting and mechanical systems. Balconies, Terraces and Patios, if any, are exclusive use common elements shown for display purposes only and location and size are subject to change without notice. Window location, size and type may vary without notice. The length, width and directional position of the flooring are for illustration purposes only and may vary without notice. E.&O.E.

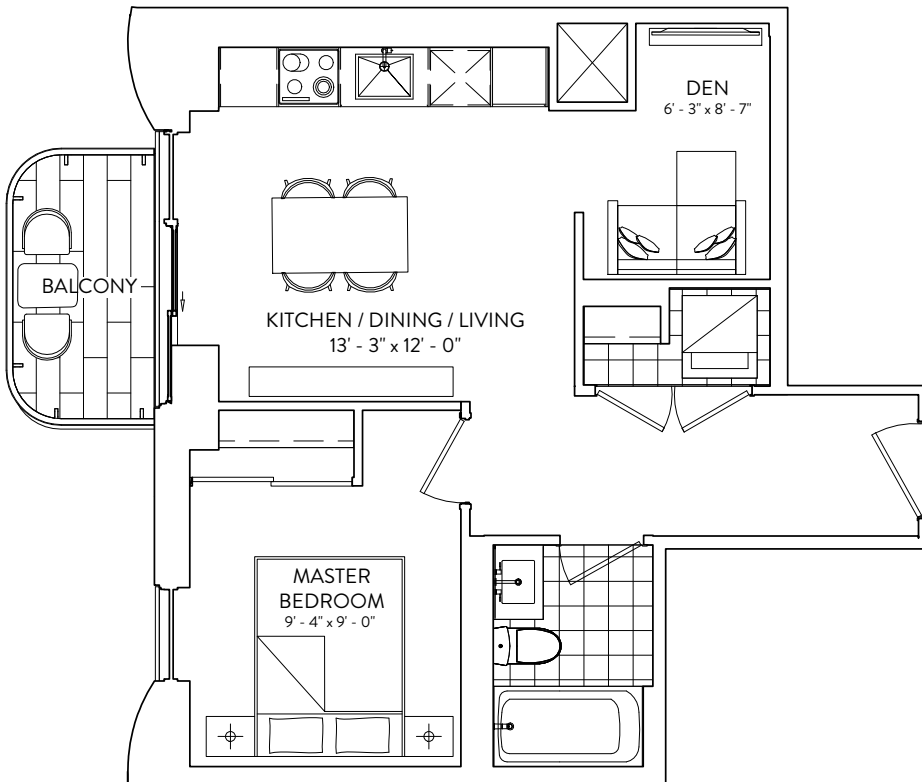
ELADCANADA

1B+D 543

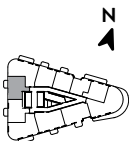
1 BEDROOM + DEN | 1 BATHROOM

INTERIOR: 543 SF | EXTERIOR: 40 SF

GALLERIA 



FLOORS 12-31

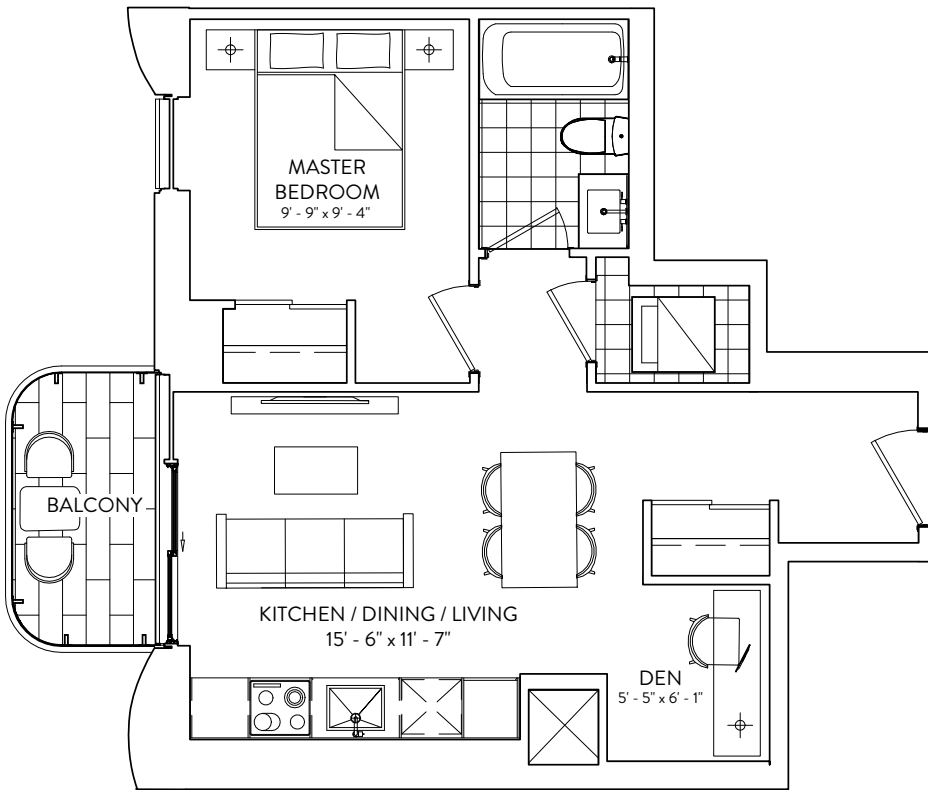


This plan is not to scale and is subject to architectural review and revision. The number of units per Floor and the number of floors may be reduced or increased at the vendor's sole discretion without notice. The purchaser acknowledges that the actual unit purchased may be a reverse layout to the plan shown. All materials, specifications, details and dimensions, if any, are approximate and subject to change without notice in order to comply with building site conditions and municipal, structural, vendor and/or architectural requirements. Actual living areas may vary from floor area stated. Floor areas have been measured and may vary in accordance with Bulletin #22 published by the Taron Warranty Corporation. Bulkheads are not shown on this plan and may be located in areas of the Unit as required to provide venting and mechanical systems. Balconies, Terraces and Patios, if any, are exclusive use common elements shown for display purposes only and location and size are subject to change without notice. Window location, size and type may vary without notice. The length, width and directional position of the flooring are for illustration purposes only and may vary without notice. E.&O.E.

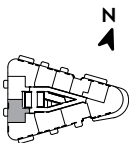
ELADCANADA

1B+D 544

1 BEDROOM + DEN | 1 BATHROOM
INTERIOR: 544 SF | EXTERIOR: 43 SF



FLOORS 12-31



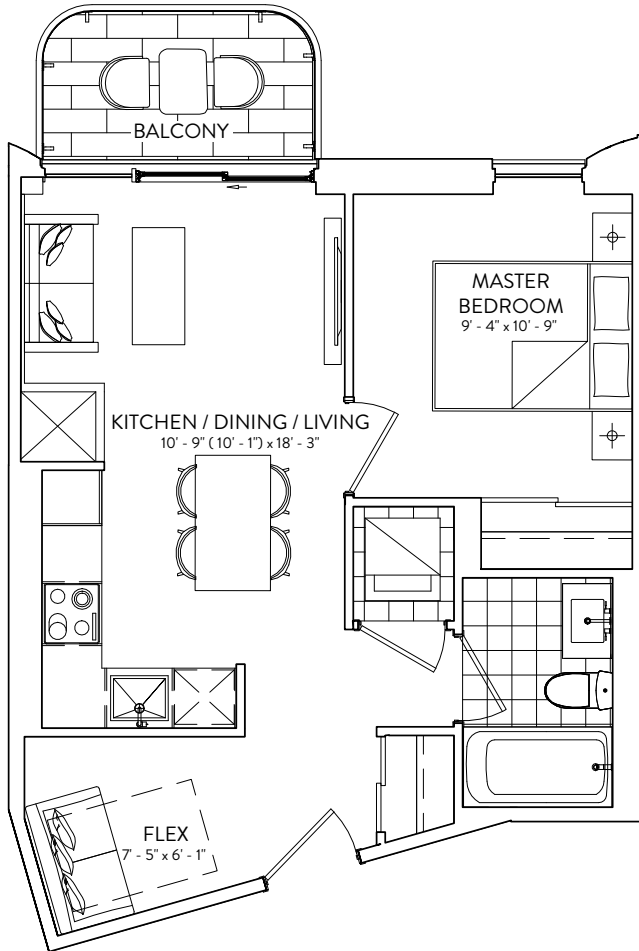
This plan is not to scale and is subject to architectural review and revision. The number of units per Floor and the number of floors may be reduced or increased at the vendor's sole discretion without notice. The purchaser acknowledges that the actual unit purchased may be a reverse layout to the plan shown. All materials, specifications, details and dimensions, if any, are approximate and subject to change without notice in order to comply with building site conditions and municipal, structural, vendor and/or architectural requirements. Actual living areas may vary from floor area stated. Floor areas have been measured and may vary in accordance with Bulletin #22 published by the Tarion Warranty Corporation. Bulkheads are not shown on this plan and may be located in areas of the Unit as required to provide venting and mechanical systems. Balconies, Terraces and Patios, if any, are exclusive use common elements shown for display purposes only and location and size are subject to change without notice. Window location, size and type may vary without notice. The length, width and directional position of the flooring are for illustration purposes only and may vary without notice. E.&O.E.

1B+F 508

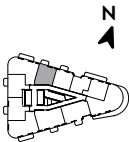
1 BEDROOM + FLEX | 1 BATHROOM

INTERIOR: 508 SF | EXTERIOR: 43 SF

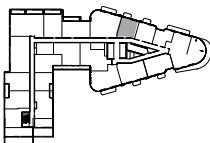
GALLERIA 



FLOORS 12-31



FLOORS 9-10

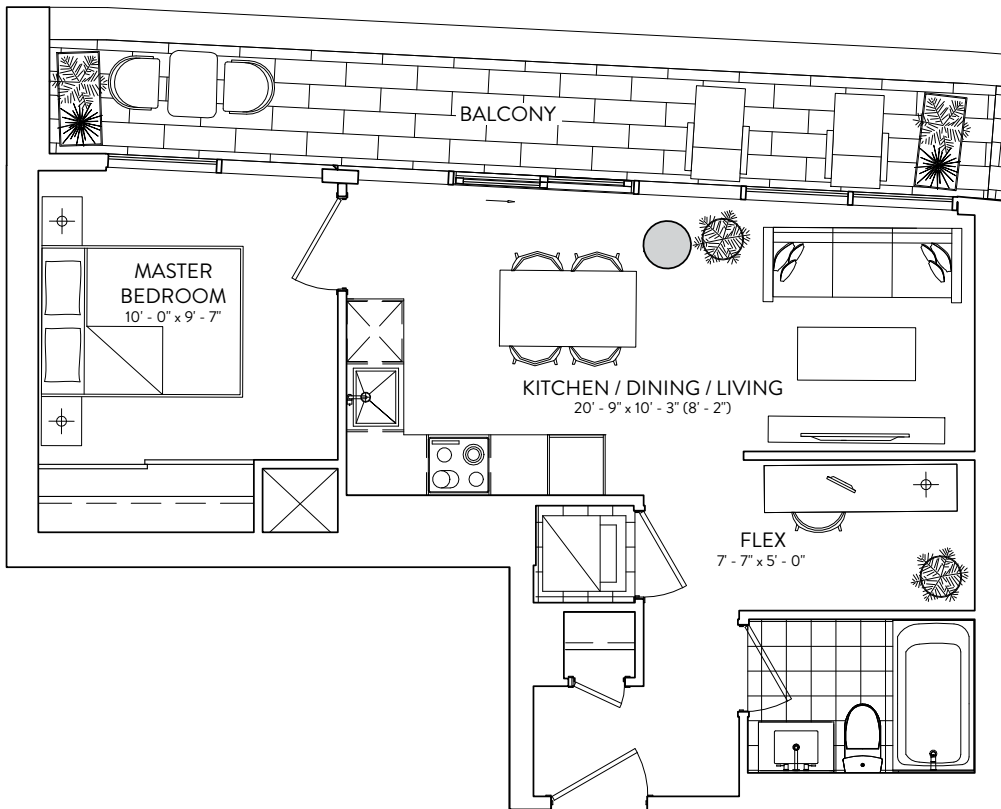


This plan is not to scale and is subject to architectural review and revision. The number of units per Floor and the number of floors may be reduced or increased at the vendor's sole discretion without notice. The purchaser acknowledges that the actual unit purchased may be a reverse layout to the plan shown. All materials, specifications, details and dimensions, if any, are approximate and subject to change without notice in order to comply with building site conditions and municipal, structural, vendor and/or architectural requirements. Actual living areas may vary from floor area stated. Floor areas have been measured and may vary in accordance with Bulletin #22 published by the Tarion Warranty Corporation. Bulkheads are not shown on this plan and may be located in areas of the Unit as required to provide venting and mechanical systems. Balconies, Terraces and Patios, if any, are exclusive use common elements shown for display purposes only and location and size are subject to change without notice. Window location, size and type may vary without notice. The length, width and directional position of the flooring are for illustration purposes only and may vary without notice. E.&O.E.

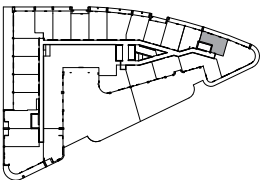
ELADCANADA

1B+F 553

1 BEDROOM + FLEX | 1 BATHROOM
INTERIOR: 553 SF | EXTERIOR: 115 SF



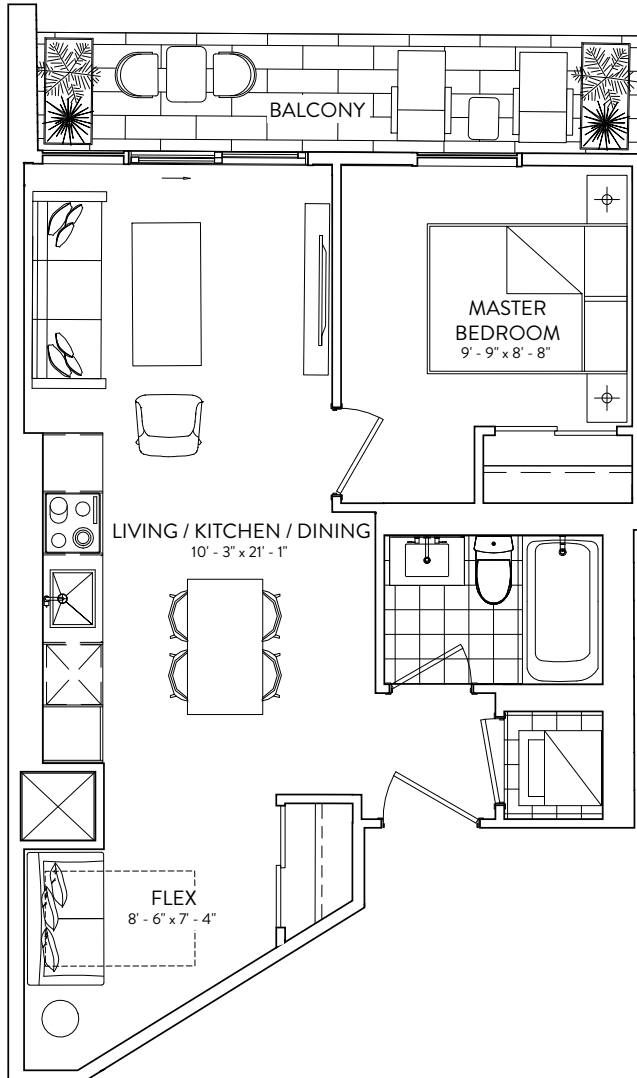
FLOORS 3-7



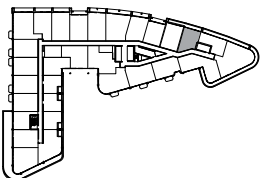
This plan is not to scale and is subject to architectural review and revision. The number of units per Floor and the number of floors may be reduced or increased at the vendor's sole discretion without notice. The purchaser acknowledges that the actual unit purchased may be a reverse layout to the plan shown. All materials, specifications, details and dimensions, if any, are approximate and subject to change without notice in order to comply with building site conditions and municipal, structural, vendor and/or architectural requirements. Actual living areas may vary from floor area stated. Floor areas have been measured and may vary in accordance with Bulletin #22 published by the Tarion Warranty Corporation. Bulkheads are not shown on this plan and may be located in areas of the Unit as required to provide venting and mechanical systems. Balconies, Terraces and Patios, if any, are exclusive use common elements shown for display purposes only and location and size are subject to change without notice. Window location, size and type may vary without notice. The length, width and directional position of the flooring are for illustration purposes only and may vary without notice. E.&O.E.

1B+F 556

1 BEDROOM + FLEX | 1 BATHROOM
INTERIOR: 556 SF | EXTERIOR: 75 SF



FLOORS 3-7



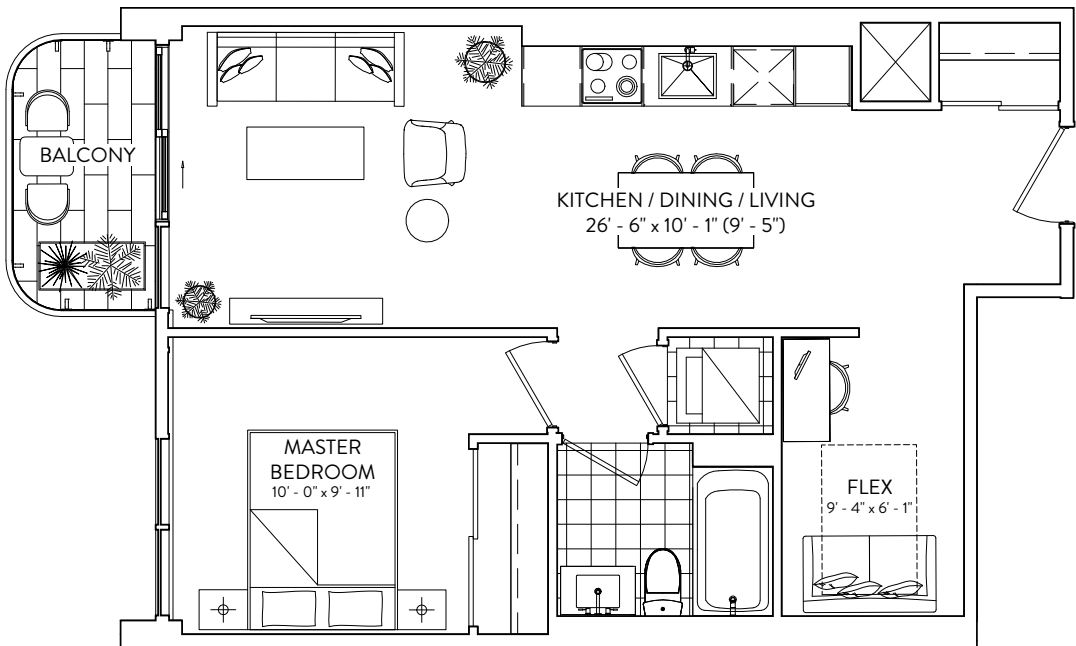
This plan is not to scale and is subject to architectural review and revision. The number of units per Floor and the number of floors may be reduced or increased at the vendor's sole discretion without notice. The purchaser acknowledges that the actual unit purchased may be a reverse layout to the plan shown. All materials, specifications, details and dimensions, if any, are approximate and subject to change without notice in order to comply with building site conditions and municipal, structural, vendor and/or architectural requirements. Actual living areas may vary from floor area stated. Floor areas have been measured and may vary in accordance with Bulletin #22 published by the Tarion Warranty Corporation. Bulkheads are not shown on this plan and may be located in areas of the Unit as required to provide venting and mechanical systems. Balconies, Terraces and Patios, if any, are exclusive use common elements shown for display purposes only and location and size are subject to change without notice. Window location, size and type may vary without notice. The length, width and directional position of the flooring are for illustration purposes only and may vary without notice. E.&O.E.

1B+F 606

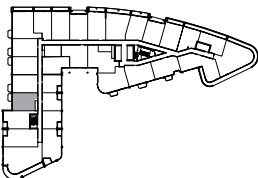
1 BEDROOM + FLEX | 1 BATHROOM

INTERIOR: 606 SF | EXTERIOR: 40 SF

GALLERIA 



FLOORS 4 -7

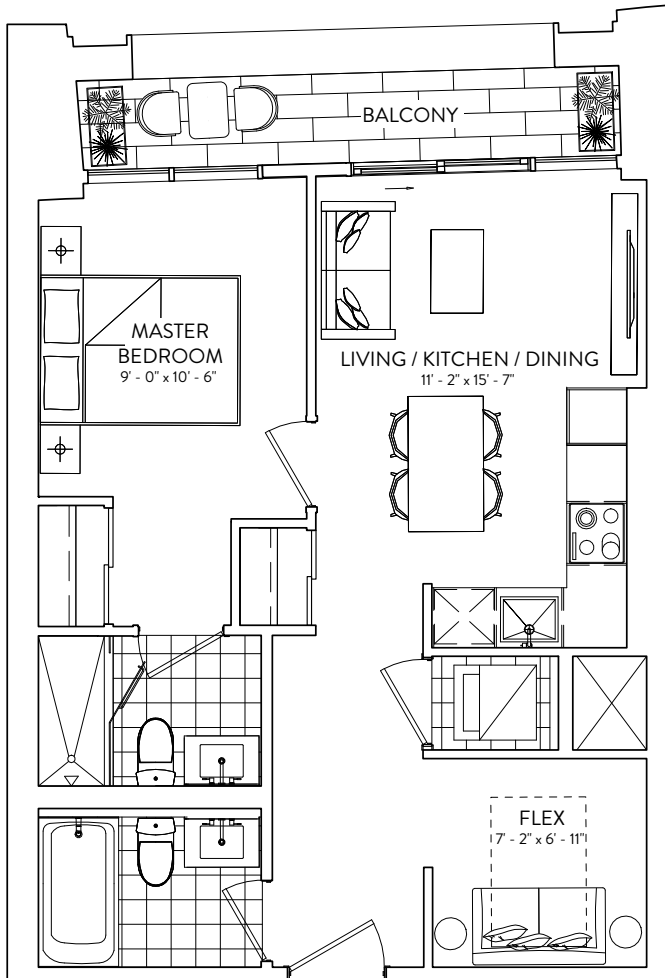


This plan is not to scale and is subject to architectural review and revision. The number of units per Floor and the number of floors may be reduced or increased at the vendor's sole discretion without notice. The purchaser acknowledges that the actual unit purchased may be a reverse layout to the plan shown. All materials, specifications, details and dimensions, if any, are approximate and subject to change without notice in order to comply with building site conditions and municipal, structural, vendor and/or architectural requirements. Actual living areas may vary from floor area stated. Floor areas have been measured and may vary in accordance with Bulletin #22 published by the Tarion Warranty Corporation. Bulkheads are not shown on this plan and may be located in areas of the Unit as required to provide venting and mechanical systems. Balconies, Terraces and Patios, if any, are exclusive use common elements shown for display purposes only and location and size are subject to change without notice. Window location, size and type may vary without notice. The length, width and directional position of the flooring are for illustration purposes only and may vary without notice. E.&O.E.

ELADCANADA

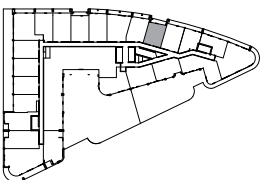
1B+F 607

1 BEDROOM + FLEX | 2 BATHROOM
INTERIOR: 607 SF | EXTERIOR: 50 SF



BALCONY
FLOORS 4-7 | EXTERIOR: 65 SF

FLOORS 3-7



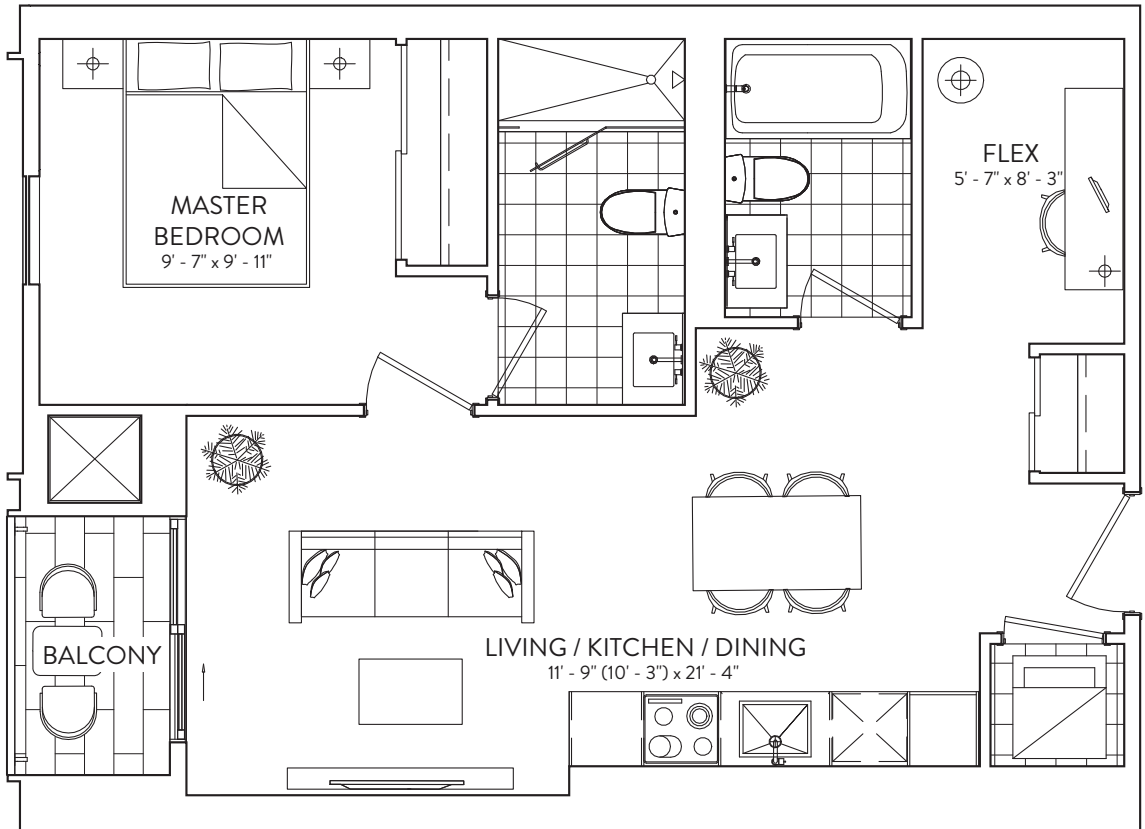
This plan is not to scale and is subject to architectural review and revision. The number of units per Floor and the number of floors may be reduced or increased at the vendor's sole discretion without notice. The purchaser acknowledges that the actual unit purchased may be a reverse layout to the plan shown. All materials, specifications, details and dimensions, if any, are approximate and subject to change without notice in order to comply with building site conditions and municipal, structural, vendor and/or architectural requirements. Actual living areas may vary from floor area stated. Floor areas have been measured and may vary in accordance with Bulletin #22 published by the Tarion Warranty Corporation. Bulkheads are not shown on this plan and may be located in areas of the Unit as required to provide venting and mechanical systems. Balconies, Terraces and Patios, if any, are exclusive use common elements shown for display purposes only and location and size are subject to change without notice. Window location, size and type may vary without notice. The length, width and directional position of the flooring are for illustration purposes only and may vary without notice. E.&O.E.

1B+F 609

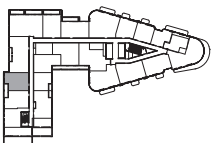
1 BEDROOM + FLEX | 1 BATHROOM

INTERIOR: 609 SF | EXTERIOR: 40 SF

GALLERIA 



FLOORS 8-10

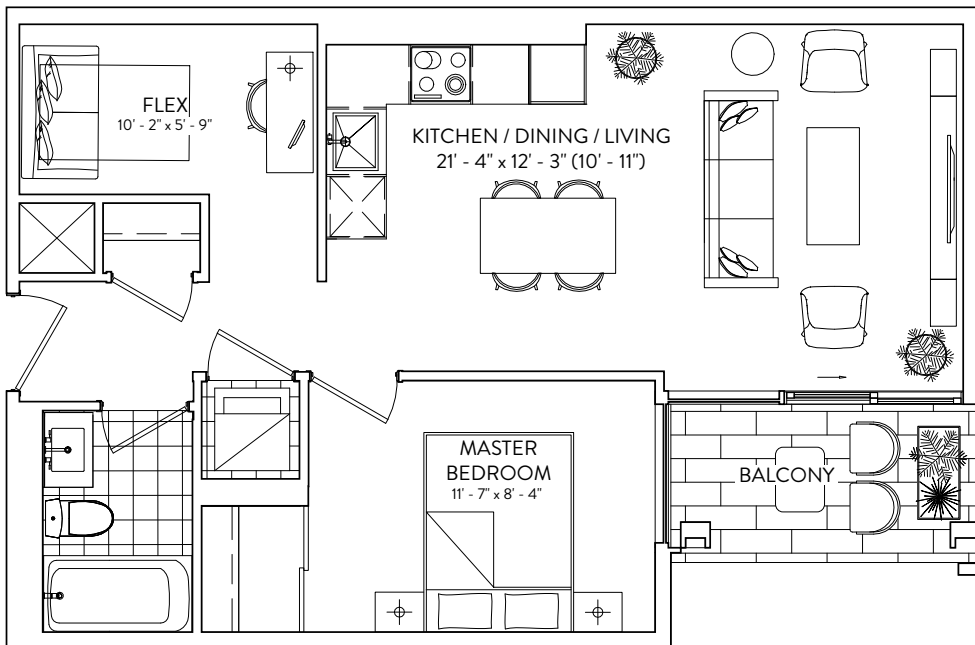


This plan is not to scale and is subject to architectural review and revision. The number of units per Floor and the number of floors may be reduced or increased at the vendor's sole discretion without notice. The purchaser acknowledges that the actual unit purchased may be a reverse layout to the plan shown. All materials, specifications, details and dimensions, if any, are approximate and subject to change without notice in order to comply with building site conditions and municipal, structural, vendor and/or architectural requirements. Actual living areas may vary from floor area stated. Floor areas have been measured and may vary in accordance with Bulletin #22 published by the Taron Warranty Corporation. Bulkheads are not shown on this plan and may be located in areas of the Unit as required to provide venting and mechanical systems. Balconies, Terraces and Patios, if any, are exclusive use common elements shown for display purposes only and location and size are subject to change without notice. Window location, size and type may vary without notice. The length, width and directional position of the flooring are for illustration purposes only and may vary without notice. E.&O.E.

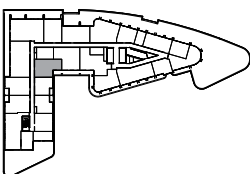
ELADCANADA

1B+F 619

1 BEDROOM + FLEX | 1 BATHROOM
INTERIOR: 619 SF | EXTERIOR: 43 SF



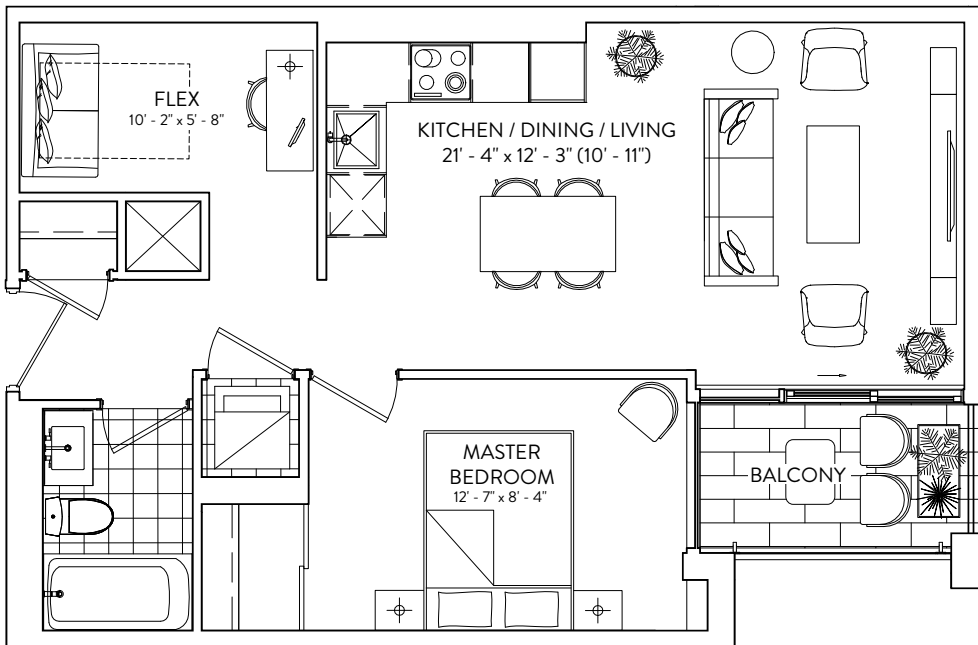
FLOORS 8-10



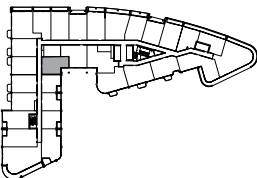
This plan is not to scale and is subject to architectural review and revision. The number of units per Floor and the number of floors may be reduced or increased at the vendor's sole discretion without notice. The purchaser acknowledges that the actual unit purchased may be a reverse layout to the plan shown. All materials, specifications, details and dimensions, if any, are approximate and subject to change without notice in order to comply with building site conditions and municipal, structural, vendor and/or architectural requirements. Actual living areas may vary from floor area stated. Floor areas have been measured and may vary in accordance with Bulletin #22 published by the Tarion Warranty Corporation. Bulkheads are not shown on this plan and may be located in areas of the Unit as required to provide venting and mechanical systems. Balconies, Terraces and Patios, if any, are exclusive use common elements shown for display purposes only and location and size are subject to change without notice. Window location, size and type may vary without notice. The length, width and directional position of the flooring are for illustration purposes only and may vary without notice. E.&O.E.

1B+F 631

1 BEDROOM + FLEX | 1 BATHROOM
INTERIOR: 631 SF | EXTERIOR: 43 SF



FLOORS 4 -7

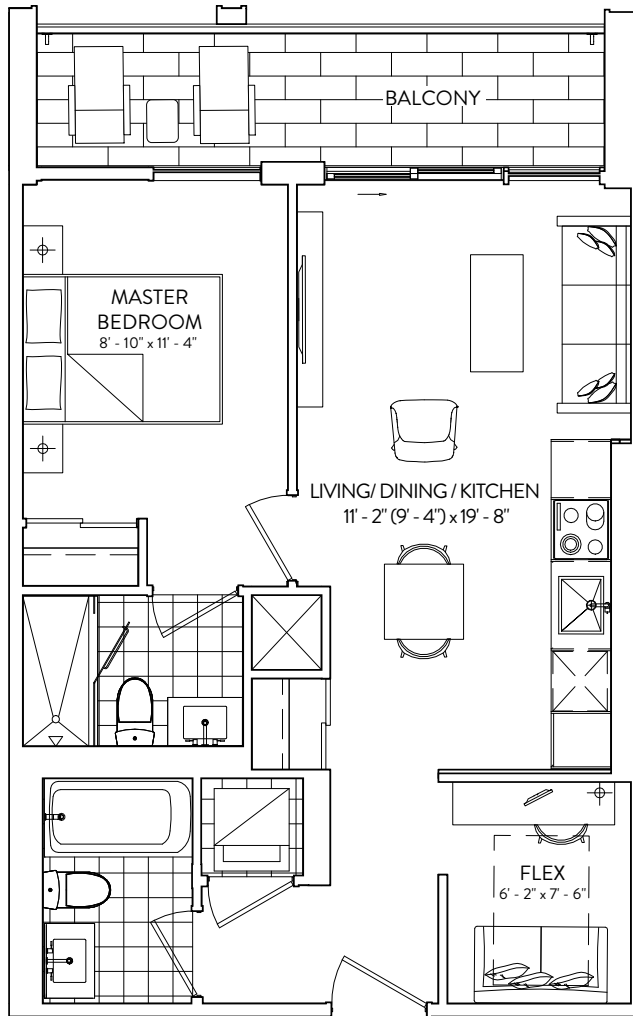


This plan is not to scale and is subject to architectural review and revision. The number of units per Floor and the number of floors may be reduced or increased at the vendor's sole discretion without notice. The purchaser acknowledges that the actual unit purchased may be a reverse layout to the plan shown. All materials, specifications, details and dimensions, if any, are approximate and subject to change without notice in order to comply with building site conditions and municipal, structural, vendor and/or architectural requirements. Actual living areas may vary from floor area stated. Floor areas have been measured and may vary in accordance with Bulletin #22 published by the Tarion Warranty Corporation. Bulkheads are not shown on this plan and may be located in areas of the Unit as required to provide venting and mechanical systems. Balconies, Terraces and Patios, if any, are exclusive use common elements shown for display purposes only and location and size are subject to change without notice. Window location, size and type may vary without notice. The length, width and directional position of the flooring are for illustration purposes only and may vary without notice. E.&O.E.

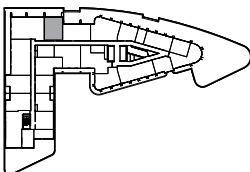
1B+F 637

1 BEDROOM + FLEX | 2 BATHROOM

INTERIOR: 637 SF | EXTERIOR: 83 SF



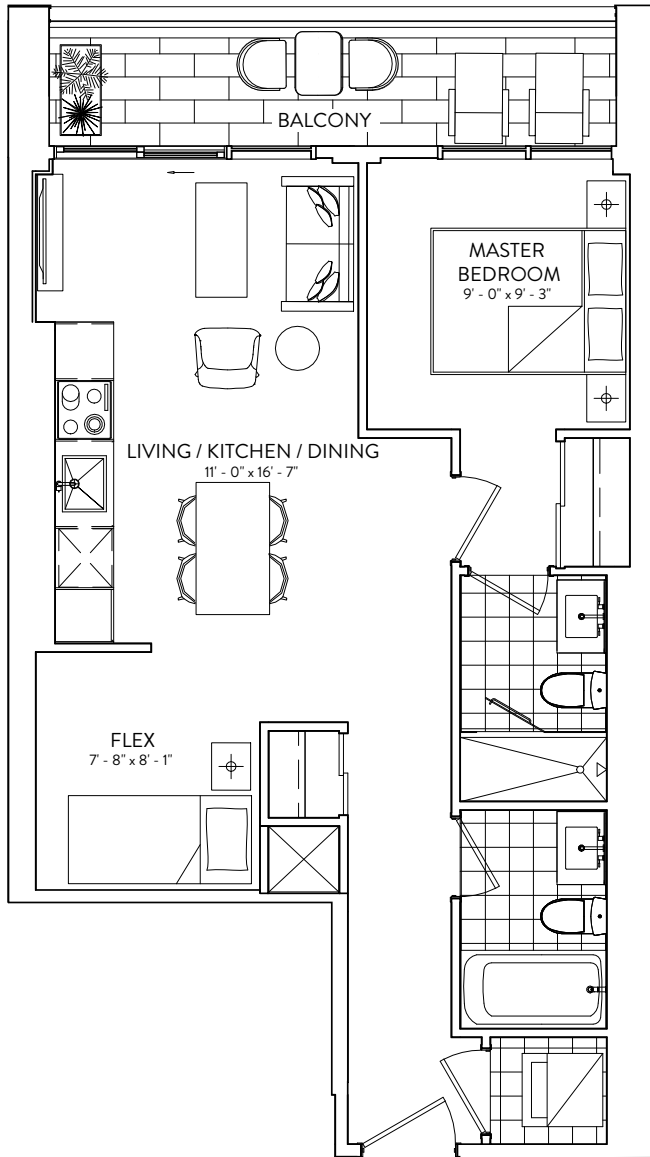
FLOORS 9-10



This plan is not to scale and is subject to architectural review and revision. The number of units per Floor and the number of floors may be reduced or increased at the vendor's sole discretion without notice. The purchaser acknowledges that the actual unit purchased may be a reverse layout to the plan shown. All materials, specifications, details and dimensions, if any, are approximate and subject to change without notice in order to comply with building site conditions and municipal, structural, vendor and/or architectural requirements. Actual living areas may vary from floor area stated. Floor areas have been measured and may vary in accordance with Bulletin #22 published by the Tarion Warranty Corporation. Bulkheads are not shown on this plan and may be located in areas of the Unit as required to provide venting and mechanical systems. Balconies, Terraces and Patios, if any, are exclusive use common elements shown for display purposes only and location and size are subject to change without notice. Window location, size and type may vary without notice. The length, width and directional position of the flooring are for illustration purposes only and may vary without notice. E.&O.E.

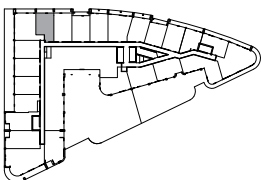
1B+F 657

1 BEDROOM + FLEX | 2 BATHROOM
INTERIOR: 657 SF | EXTERIOR: 65 SF



BALCONY
FLOORS 4-7 | EXTERIOR: 75 SF

FLOORS 3-7

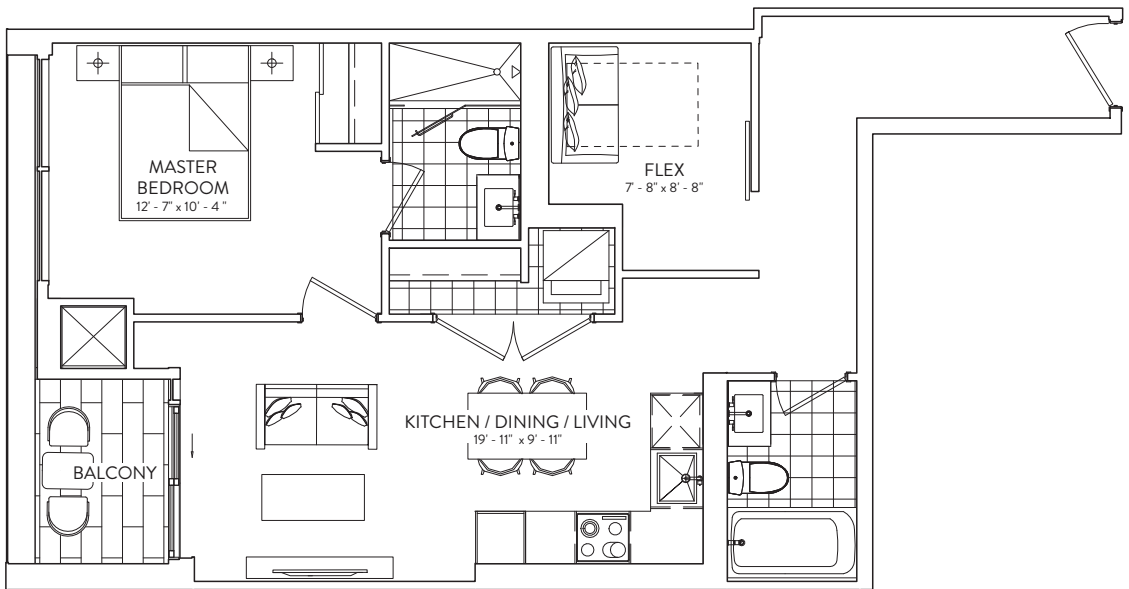


This plan is not to scale and is subject to architectural review and revision. The number of units per Floor and the number of floors may be reduced or increased at the vendor's sole discretion without notice. The purchaser acknowledges that the actual unit purchased may be a reverse layout to the plan shown. All materials, specifications, details and dimensions, if any, are approximate and subject to change without notice in order to comply with building site conditions and municipal, structural, vendor and/or architectural requirements. Actual living areas may vary from floor area stated. Floor areas have been measured and may vary in accordance with Bulletin #22 published by the Tarion Warranty Corporation. Bulkheads are not shown on this plan and may be located in areas of the Unit as required to provide venting and mechanical systems. Balconies, Terraces and Patios, if any, are exclusive use common elements shown for display purposes only and location and size are subject to change without notice. Window location, size and type may vary without notice. The length, width and directional position of the flooring are for illustration purposes only and may vary without notice. E.&O.E.

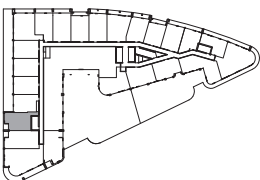
1B+F 721

1 BEDROOM + FLEX | 1 BATHROOM

INTERIOR: 721 SF | EXTERIOR: 35 SF



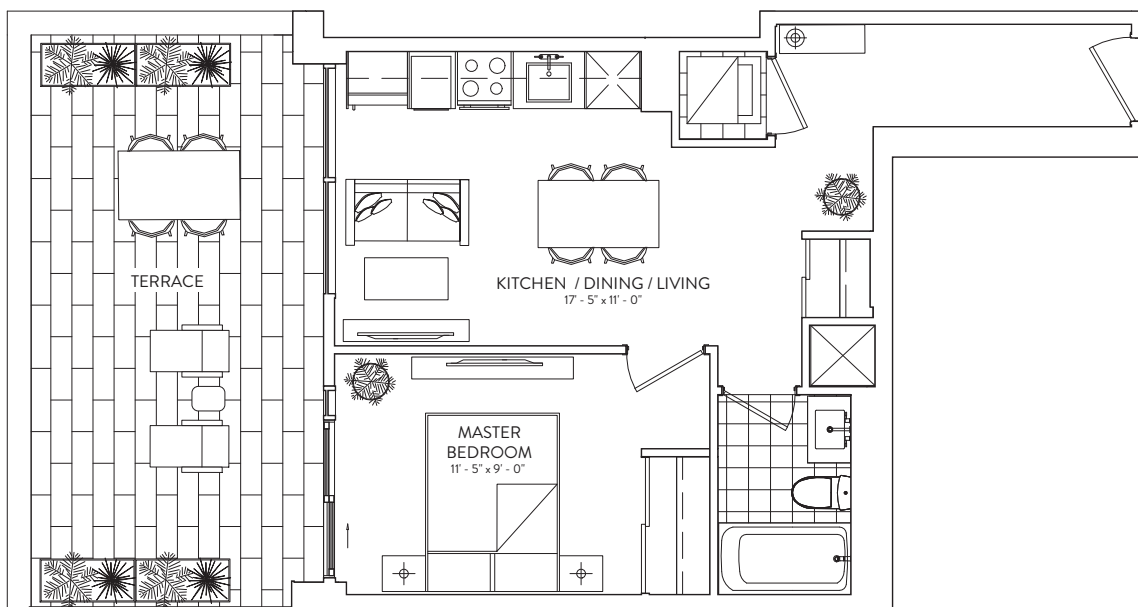
FLOORS 3-4



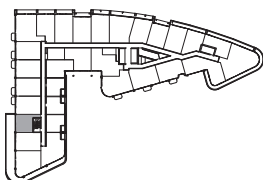
This plan is not to scale and is subject to architectural review and revision. The number of units per Floor and the number of floors may be reduced or increased at the vendor's sole discretion without notice. The purchaser acknowledges that the actual unit purchased may be a reverse layout to the plan shown. All materials, specifications, details and dimensions, if any, are approximate and subject to change without notice in order to comply with building site conditions and municipal, structural, vendor and/or architectural requirements. Actual living areas may vary from floor area stated. Floor areas have been measured and may vary in accordance with Bulletin #22 published by the Tarion Warranty Corporation. Bulkheads are not shown on this plan and may be located in areas of the Unit as required to provide venting and mechanical systems. Balconies, Terraces and Patios, if any, are exclusive use common elements shown for display purposes only and location and size are subject to change without notice. Window location, size and type may vary without notice. The length, width and directional position of the flooring are for illustration purposes only and may vary without notice. E.&O.E.

1B 517

INTERIOR: 517 SF | EXTERIOR: 226 SF | 1 BEDROOM | 1 BATHROOM



FLOOR 5

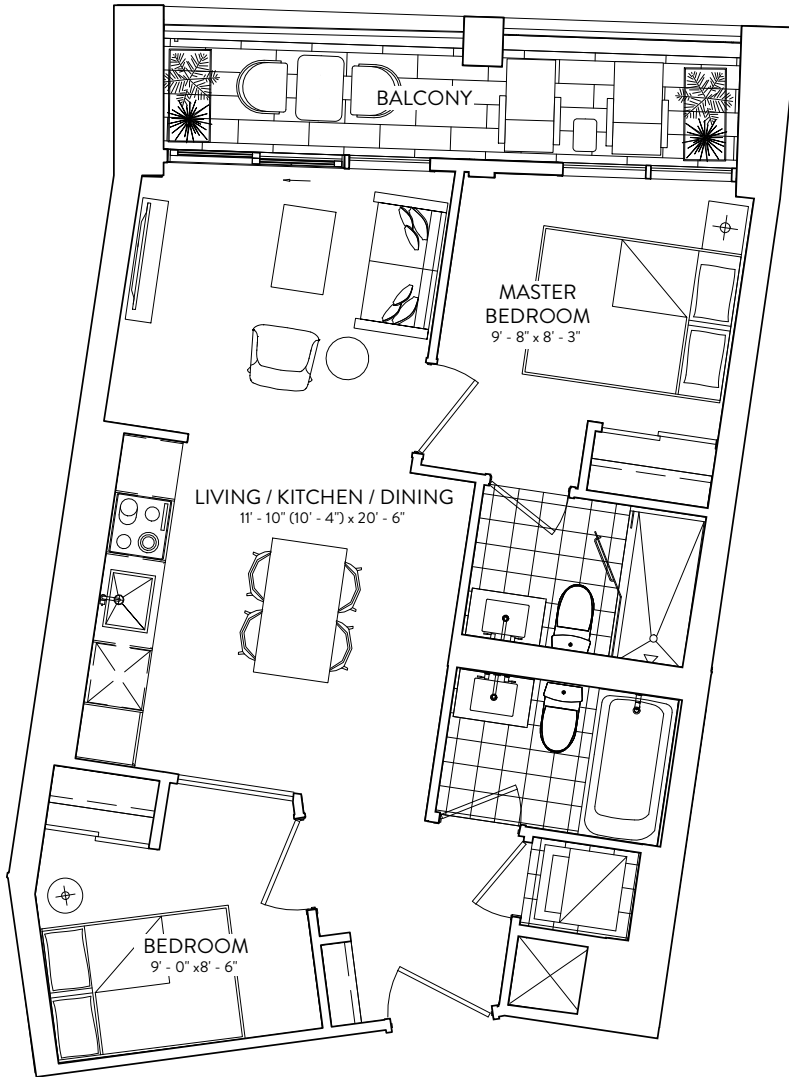


This plan is not to scale and is subject to architectural review and revision. The number of units per level and the number of floors may be reduced or increased at the vendor's sole discretion without notice. The purchaser acknowledges that the actual unit purchased may be a reverse layout to the plan shown. All materials, specifications, details and dimensions, if any, are approximate and subject to change without notice in order to comply with building site conditions and municipal, structural, vendor and/or architectural requirements. Actual living areas may vary from floor area stated. Floor areas have been measured and may vary in accordance with Bulletin #22 published by the Tarion Warranty Corporation. Bulkheads are not shown on this plan and may be located in areas of the Unit as required to provide venting and mechanical systems. Balconies, Terraces and Patios, if any, are exclusive use common elements shown for display purposes only and location and size are subject to change without notice. Window location, size and type may vary without notice. The length, width and directional position of the flooring are for illustration purposes only and may vary without notice. E.&O.E.

2B 643

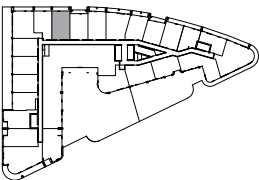
2 BEDROOM | 2 BATHROOM

INTERIOR: 643 SF | EXTERIOR: 70 SF



BALCONY
FLOORS 4-7 | EXTERIOR: 65 SF

FLOORS 3-7

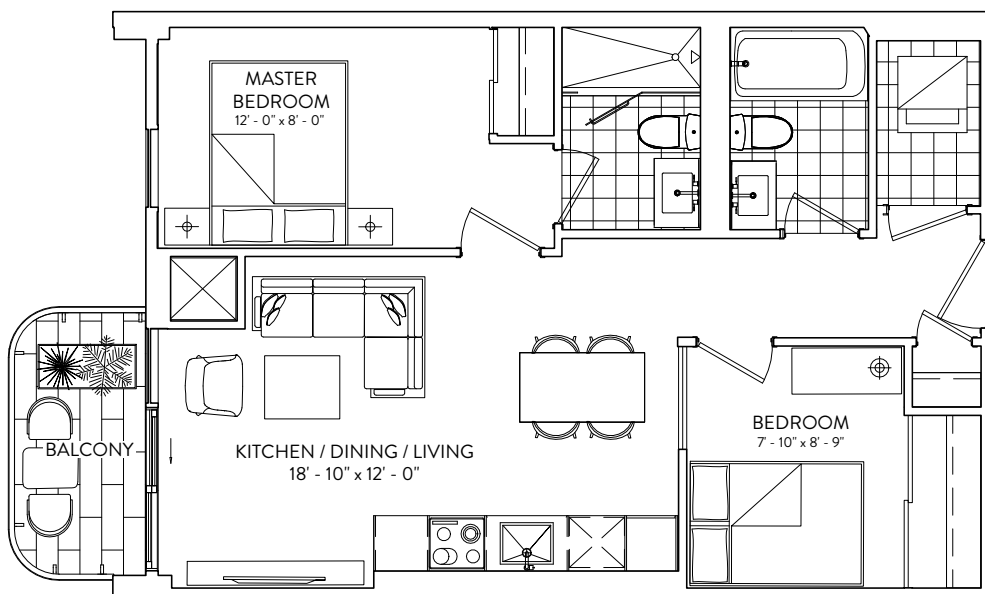


This plan is not to scale and is subject to architectural review and revision. The number of units per Floor and the number of floors may be reduced or increased at the vendor's sole discretion without notice. The purchaser acknowledges that the actual unit purchased may be a reverse layout to the plan shown. All materials, specifications, details and dimensions, if any, are approximate and subject to change without notice in order to comply with building site conditions and municipal, structural, vendor and/or architectural requirements. Actual living areas may vary from floor area stated. Floor areas have been measured and may vary in accordance with Bulletin #22 published by the Tarion Warranty Corporation. Bulkheads are not shown on this plan and may be located in areas of the Unit as required to provide venting and mechanical systems. Balconies, Terraces and Patios, if any, are exclusive use common elements shown for display purposes only and location and size are subject to change without notice. Window location, size and type may vary without notice. The length, width and directional position of the flooring are for illustration purposes only and may vary without notice. E.&O.E.

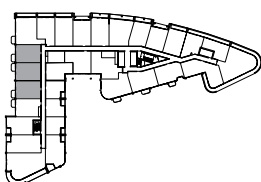
2B 655

2 BEDROOM | 2 BATHROOM

INTERIOR: 655 SF | EXTERIOR: 41 SF



FLOORS 4 -7

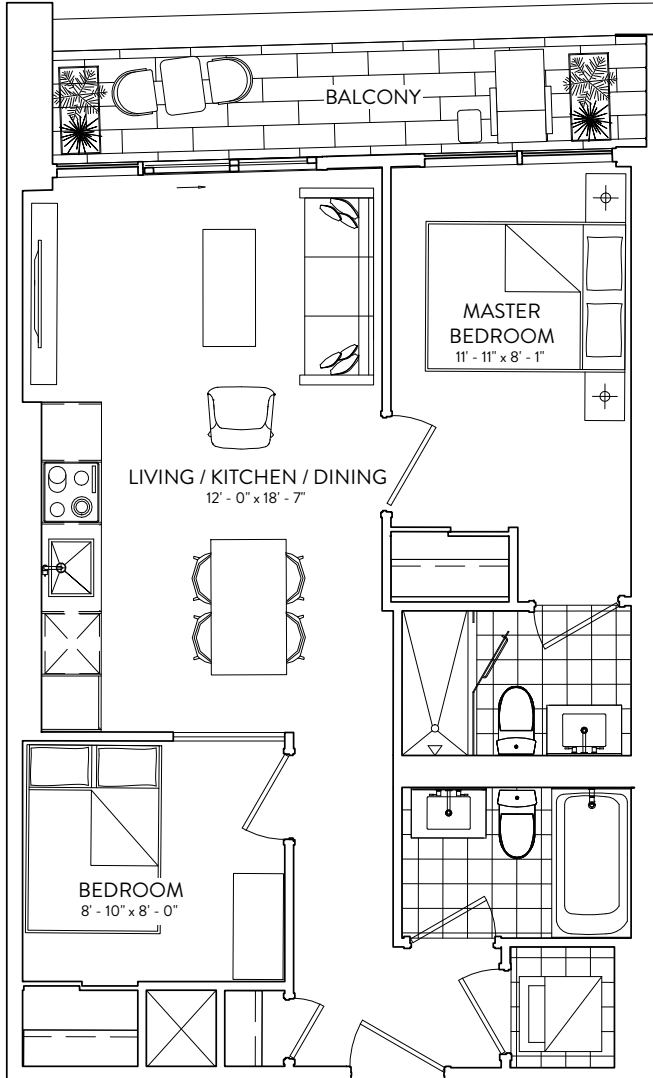


This plan is not to scale and is subject to architectural review and revision. The number of units per Floor and the number of floors may be reduced or increased at the vendor's sole discretion without notice. The purchaser acknowledges that the actual unit purchased may be a reverse layout to the plan shown. All materials, specifications, details and dimensions, if any, are approximate and subject to change without notice in order to comply with building site conditions and municipal, structural, vendor and/or architectural requirements. Actual living areas may vary from floor area stated. Floor areas have been measured and may vary in accordance with Bulletin #22 published by the Taron Warranty Corporation. Bulkheads are not shown on this plan and may be located in areas of the Unit as required to provide venting and mechanical systems. Balconies, Terraces and Patios, if any, are exclusive use common elements shown for display purposes only and location and size are subject to change without notice. Window location, size and type may vary without notice. The length, width and directional position of the flooring are for illustration purposes only and may vary without notice. E.&O.E.

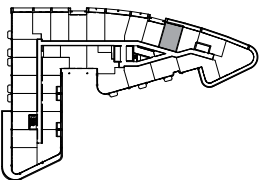
2B 669

2 BEDROOM | 2 BATHROOM

INTERIOR: 669 SF | EXTERIOR: 74 SF



FLOORS 3-7

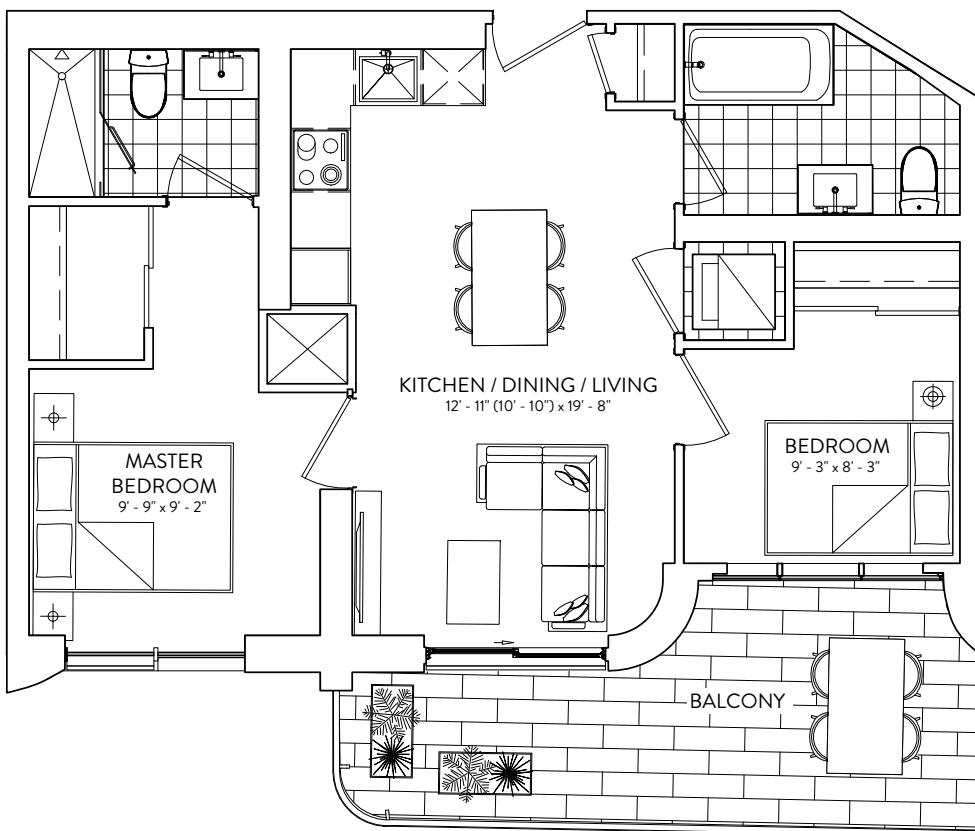


This plan is not to scale and is subject to architectural review and revision. The number of units per Floor and the number of floors may be reduced or increased at the vendor's sole discretion without notice. The purchaser acknowledges that the actual unit purchased may be a reverse layout to the plan shown. All materials, specifications, details and dimensions, if any, are approximate and subject to change without notice in order to comply with building site conditions and municipal, structural, vendor and/or architectural requirements. Actual living areas may vary from floor area stated. Floor areas have been measured and may vary in accordance with Bulletin #22 published by the Taron Warranty Corporation. Bulkheads are not shown on this plan and may be located in areas of the Unit as required to provide venting and mechanical systems. Balconies, Terraces and Patios, if any, are exclusive use common elements shown for display purposes only and location and size are subject to change without notice. Window location, size and type may vary without notice. The length, width and directional position of the flooring are for illustration purposes only and may vary without notice. E.&O.E.

2B 670

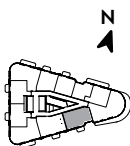
2 BEDROOM | 2 BATHROOM

INTERIOR: 670 SF | EXTERIOR: 140 SF

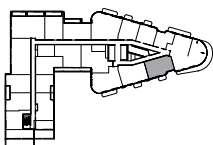


BALCONY
FLOORS 9, 10, 12, 13, 14, 16-18, 20-22, 24-26, 28, 29, 31 | EXTERIOR: 43 SF

FLOORS 11-31



FLOORS 9-10

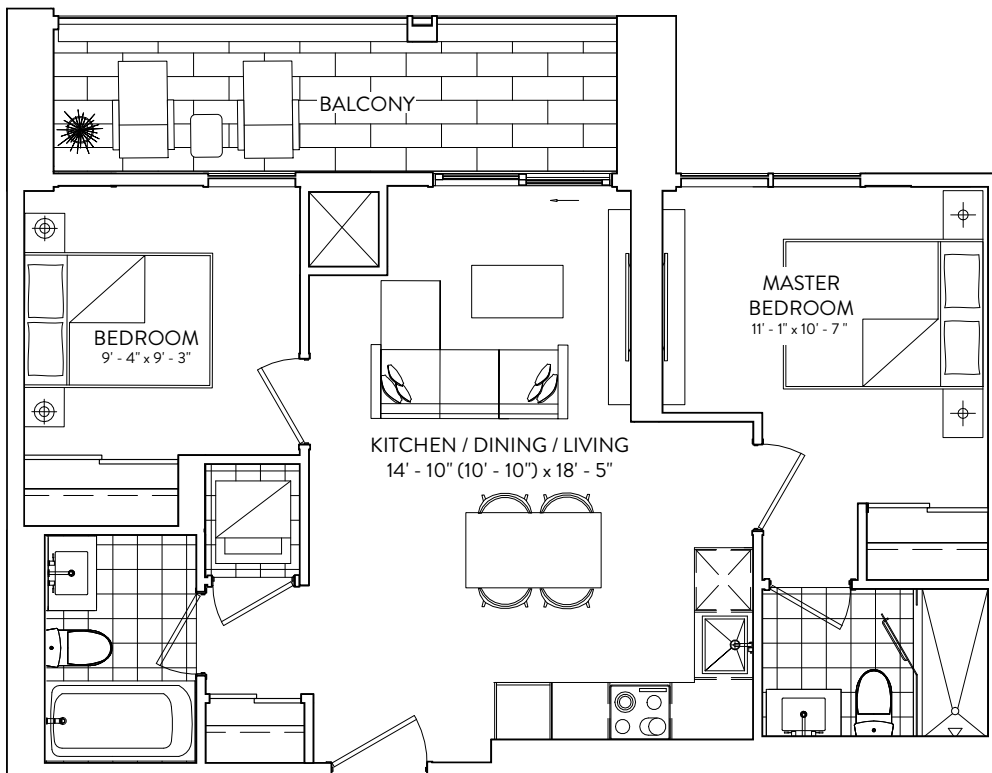


This plan is not to scale and is subject to architectural review and revision. The number of units per Floor and the number of floors may be reduced or increased at the vendor's sole discretion without notice. The purchaser acknowledges that the actual unit purchased may be a reverse layout to the plan shown. All materials, specifications, details and dimensions, if any, are approximate and subject to change without notice in order to comply with building site conditions and municipal, structural, vendor and/or architectural requirements. Actual living areas may vary from floor area stated. Floor areas have been measured and may vary in accordance with Bulletin #22 published by the Tarion Warranty Corporation. Bulkheads are not shown on this plan and may be located in areas of the Unit as required to provide venting and mechanical systems. Balconies, Terraces and Patios, if any, are exclusive use common elements shown for display purposes only and location and size are subject to change without notice. Window location, size and type may vary without notice. The length, width and directional position of the flooring are for illustration purposes only and may vary without notice. E.&O.E.

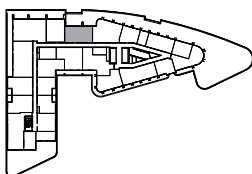
2B 674

2 BEDROOM | 2 BATHROOM

INTERIOR: 674 SF | EXTERIOR: 88 SF



FLOORS 9-10

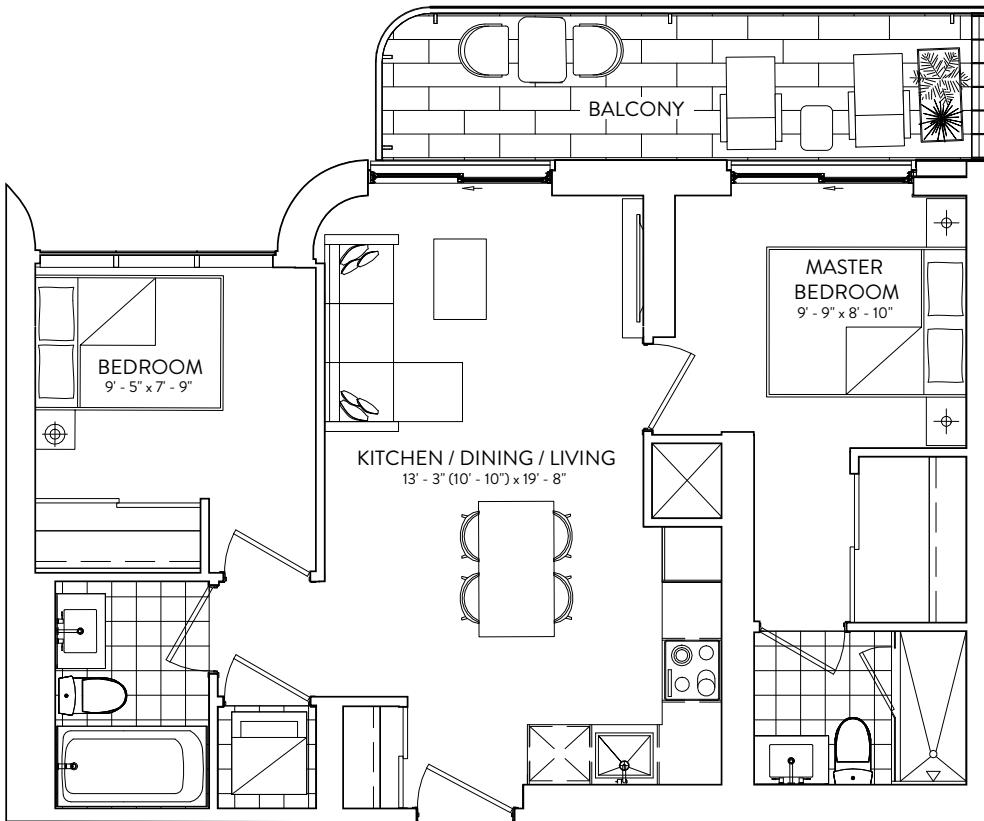


This plan is not to scale and is subject to architectural review and revision. The number of units per Floor and the number of floors may be reduced or increased at the vendor's sole discretion without notice. The purchaser acknowledges that the actual unit purchased may be a reverse layout to the plan shown. All materials, specifications, details and dimensions, if any, are approximate and subject to change without notice in order to comply with building site conditions and municipal, structural, vendor and/or architectural requirements. Actual living areas may vary from floor area stated. Floor areas have been measured and may vary in accordance with Bulletin #22 published by the Tarion Warranty Corporation. Bulkheads are not shown on this plan and may be located in areas of the Unit as required to provide venting and mechanical systems. Balconies, Terraces and Patios, if any, are exclusive use common elements shown for display purposes only and location and size are subject to change without notice. Window location, size and type may vary without notice. The length, width and directional position of the flooring are for illustration purposes only and may vary without notice. E.&O.E.

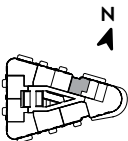
2B 675

2 BEDROOM | 2 BATHROOM

INTERIOR: 675 SF | EXTERIOR: 95 SF



FLOORS 28-31

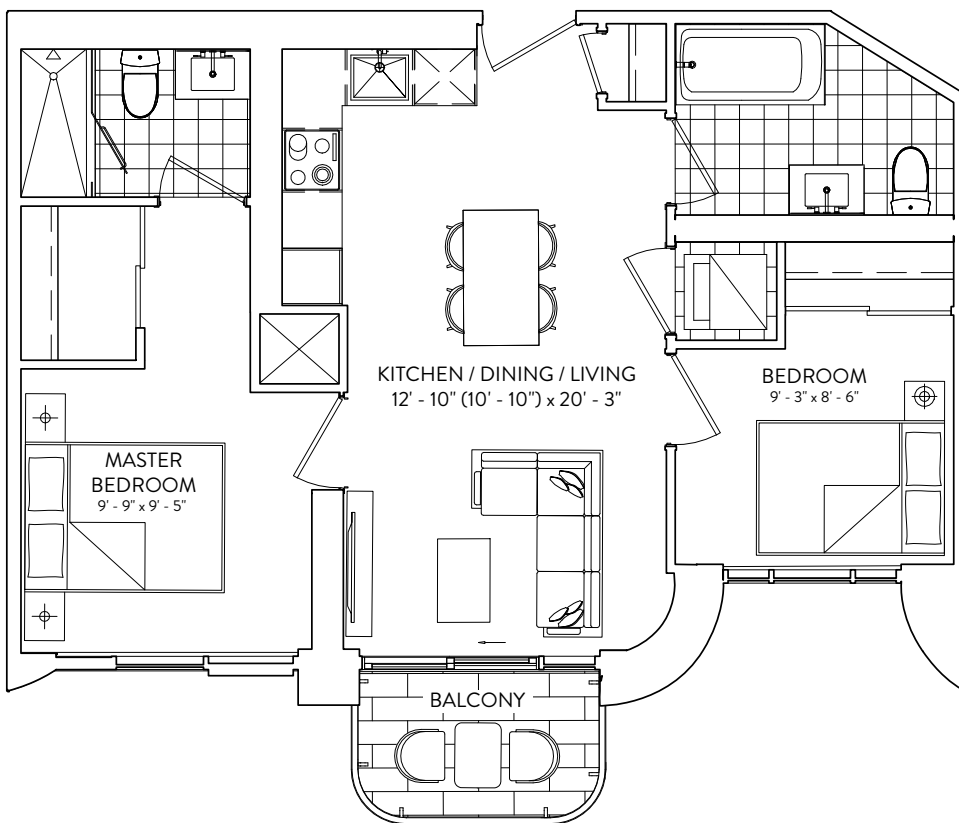


This plan is not to scale and is subject to architectural review and revision. The number of units per Floor and the number of floors may be reduced or increased at the vendor's sole discretion without notice. The purchaser acknowledges that the actual unit purchased may be a reverse layout to the plan shown. All materials, specifications, details and dimensions, if any, are approximate and subject to change without notice in order to comply with building site conditions and municipal, structural, vendor and/or architectural requirements. Actual living areas may vary from floor area stated. Floor areas have been measured and may vary in accordance with Bulletin #22 published by the Taron Warranty Corporation. Bulkheads are not shown on this plan and may be located in areas of the Unit as required to provide venting and mechanical systems. Balconies, Terraces and Patios, if any, are exclusive use common elements shown for display purposes only and location and size are subject to change without notice. Window location, size and type may vary without notice. The length, width and directional position of the flooring are for illustration purposes only and may vary without notice. E.&O.E.

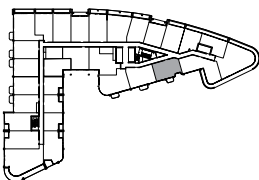
2B 682

2 BEDROOM | 2 BATHROOM

INTERIOR: 682 SF | EXTERIOR: 43 SF



FLOORS 4 -7



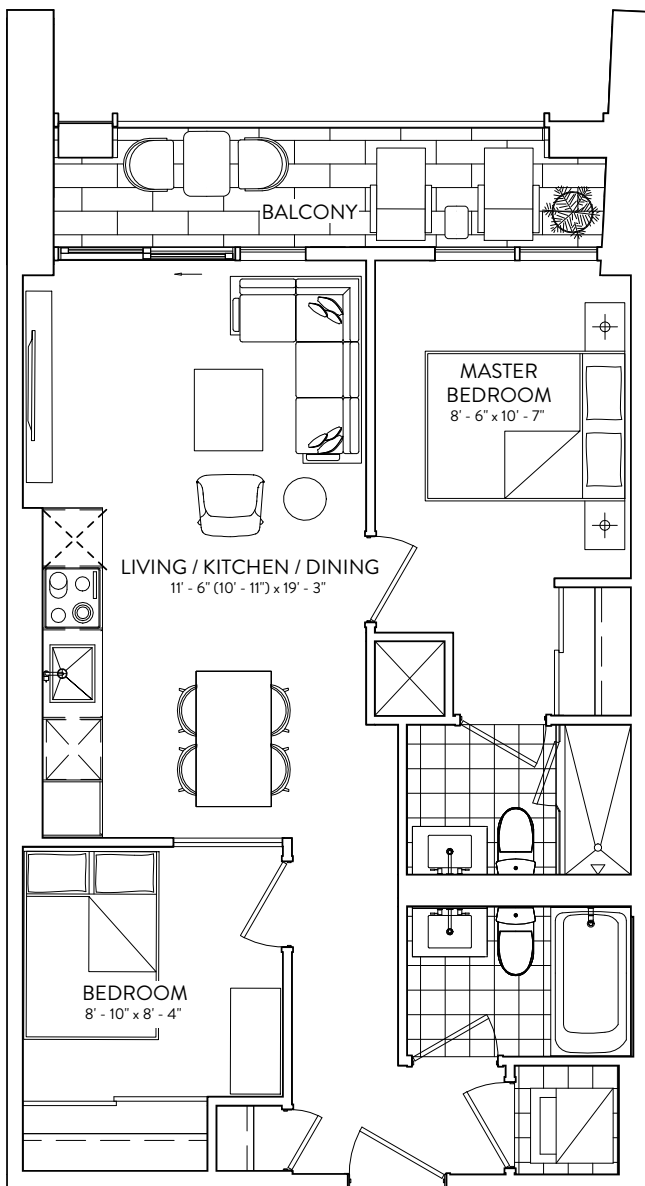
This plan is not to scale and is subject to architectural review and revision. The number of units per Floor and the number of floors may be reduced or increased at the vendor's sole discretion without notice. The purchaser acknowledges that the actual unit purchased may be a reverse layout to the plan shown. All materials, specifications, details and dimensions, if any, are approximate and subject to change without notice in order to comply with building site conditions and municipal, structural, vendor and/or architectural requirements. Actual living areas may vary from floor area stated. Floor areas have been measured and may vary in accordance with Bulletin #22 published by the Taron Warranty Corporation. Bulkheads are not shown on this plan and may be located in areas of the Unit as required to provide venting and mechanical systems. Balconies, Terraces and Patios, if any, are exclusive use common elements shown for display purposes only and location and size are subject to change without notice. Window location, size and type may vary without notice. The length, width and directional position of the flooring are for illustration purposes only and may vary without notice. E.&O.E.

2B 691

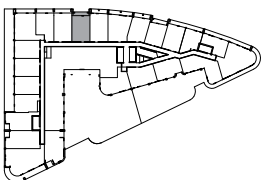
2 BEDROOM | 2 BATHROOM

INTERIOR: 691 SF | EXTERIOR: 65 SF

GALLERIA 



FLOORS 3-7



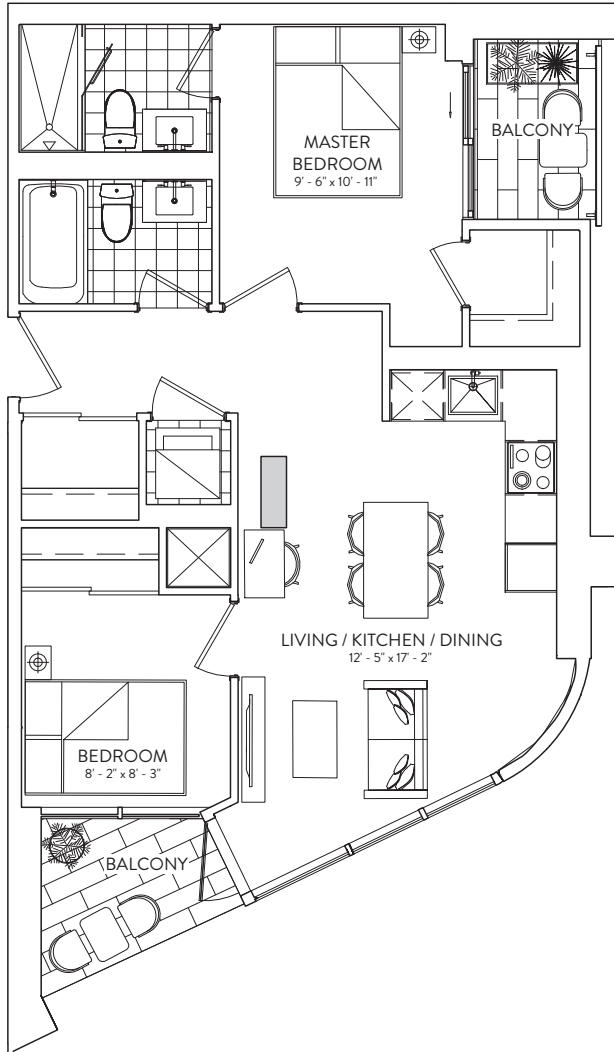
This plan is not to scale and is subject to architectural review and revision. The number of units per Floor and the number of floors may be reduced or increased at the vendor's sole discretion without notice. The purchaser acknowledges that the actual unit purchased may be a reverse layout to the plan shown. All materials, specifications, details and dimensions, if any, are approximate and subject to change without notice in order to comply with building site conditions and municipal, structural, vendor and/or architectural requirements. Actual living areas may vary from floor area stated. Floor areas have been measured and may vary in accordance with Bulletin #22 published by the Tarion Warranty Corporation. Bulkheads are not shown on this plan and may be located in areas of the Unit as required to provide venting and mechanical systems. Balconies, Terraces and Patios, if any, are exclusive use common elements shown for display purposes only and location and size are subject to change without notice. Window location, size and type may vary without notice. The length, width and directional position of the flooring are for illustration purposes only and may vary without notice. E.&O.E.

ELADCANADA

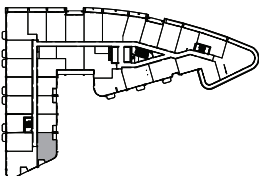
2B 693

2 BEDROOM | 2 BATHROOM

INTERIOR: 693 SF | EXTERIOR: 38 SF



FLOORS 6-7

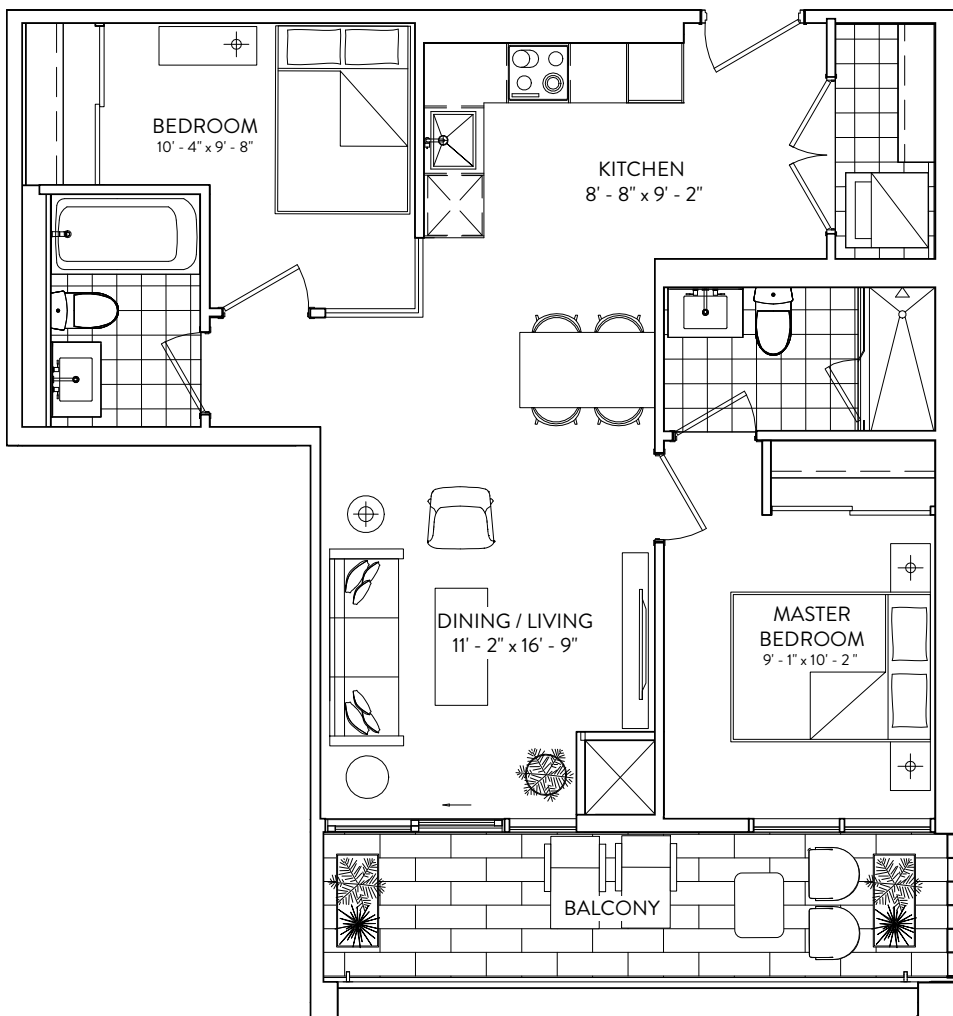


This plan is not to scale and is subject to architectural review and revision. The number of units per Floor and the number of floors may be reduced or increased at the vendor's sole discretion without notice. The purchaser acknowledges that the actual unit purchased may be a reverse layout to the plan shown. All materials, specifications, details and dimensions, if any, are approximate and subject to change without notice in order to comply with building site conditions and municipal, structural, vendor and/or architectural requirements. Actual living areas may vary from floor area stated. Floor areas have been measured and may vary in accordance with Bulletin #22 published by the Tarion Warranty Corporation. Bulkheads are not shown on this plan and may be located in areas of the Unit as required to provide venting and mechanical systems. Balconies, Terraces and Patios, if any, are exclusive use common elements shown for display purposes only and location and size are subject to change without notice. Window location, size and type may vary without notice. The length, width and directional position of the flooring are for illustration purposes only and may vary without notice. E.&O.E.

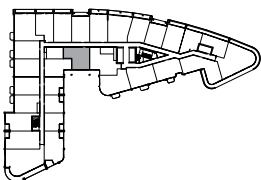
2B 732

2 BEDROOM | 2 BATHROOM

INTERIOR: 732 SF | EXTERIOR: 100 SF



BALCONY
FLOOR 8 | EXTERIOR: 108 SF
FLOORS 9-10 | EXTERIOR: 86 SF
FLOORS 4-10



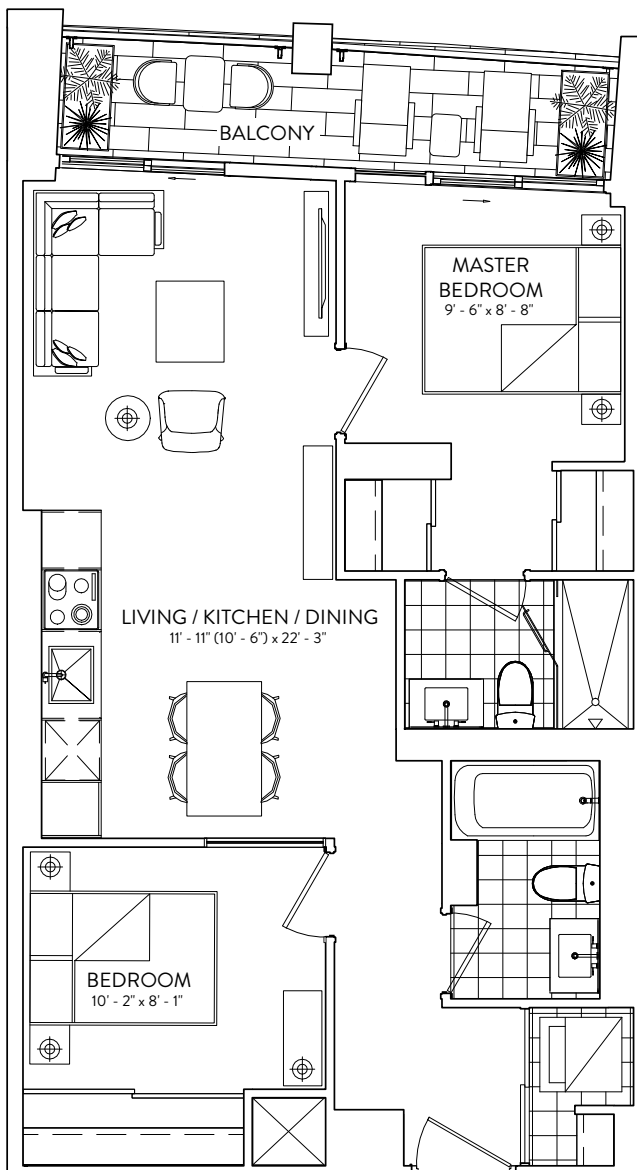
This plan is not to scale and is subject to architectural review and revision. The number of units per Floor and the number of floors may be reduced or increased at the vendor's sole discretion without notice. The purchaser acknowledges that the actual unit purchased may be a reverse layout to the plan shown. All materials, specifications, details and dimensions, if any, are approximate and subject to change without notice in order to comply with building site conditions and municipal, structural, vendor and/or architectural requirements. Actual living areas may vary from floor area stated. Floor areas have been measured and may vary in accordance with Bulletin #22 published by the Tarion Warranty Corporation. Bulkheads are not shown on this plan and may be located in areas of the Unit as required to provide venting and mechanical systems. Balconies, Terraces and Patios, if any, are exclusive use common elements shown for display purposes only and location and size are subject to change without notice. Window location, size and type may vary without notice. The length, width and directional position of the flooring are for illustration purposes only and may vary without notice. E.&O.E.

2B 737

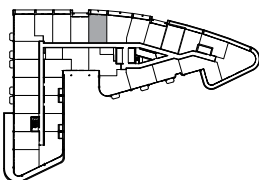
2 BEDROOM | 2 BATHROOM

INTERIOR: 737 SF | EXTERIOR: 70 SF

GALLERIA 



FLOORS 3-7



This plan is not to scale and is subject to architectural review and revision. The number of units per Floor and the number of floors may be reduced or increased at the vendor's sole discretion without notice. The purchaser acknowledges that the actual unit purchased may be a reverse layout to the plan shown. All materials, specifications, details and dimensions, if any, are approximate and subject to change without notice in order to comply with building site conditions and municipal, structural, vendor and/or architectural requirements. Actual living areas may vary from floor area stated. Floor areas have been measured and may vary in accordance with Bulletin #22 published by the Tarion Warranty Corporation. Bulkheads are not shown on this plan and may be located in areas of the Unit as required to provide venting and mechanical systems. Balconies, Terraces and Patios, if any, are exclusive use common elements shown for display purposes only and location and size are subject to change without notice. Window location, size and type may vary without notice. The length, width and directional position of the flooring are for illustration purposes only and may vary without notice. E.&O.E.

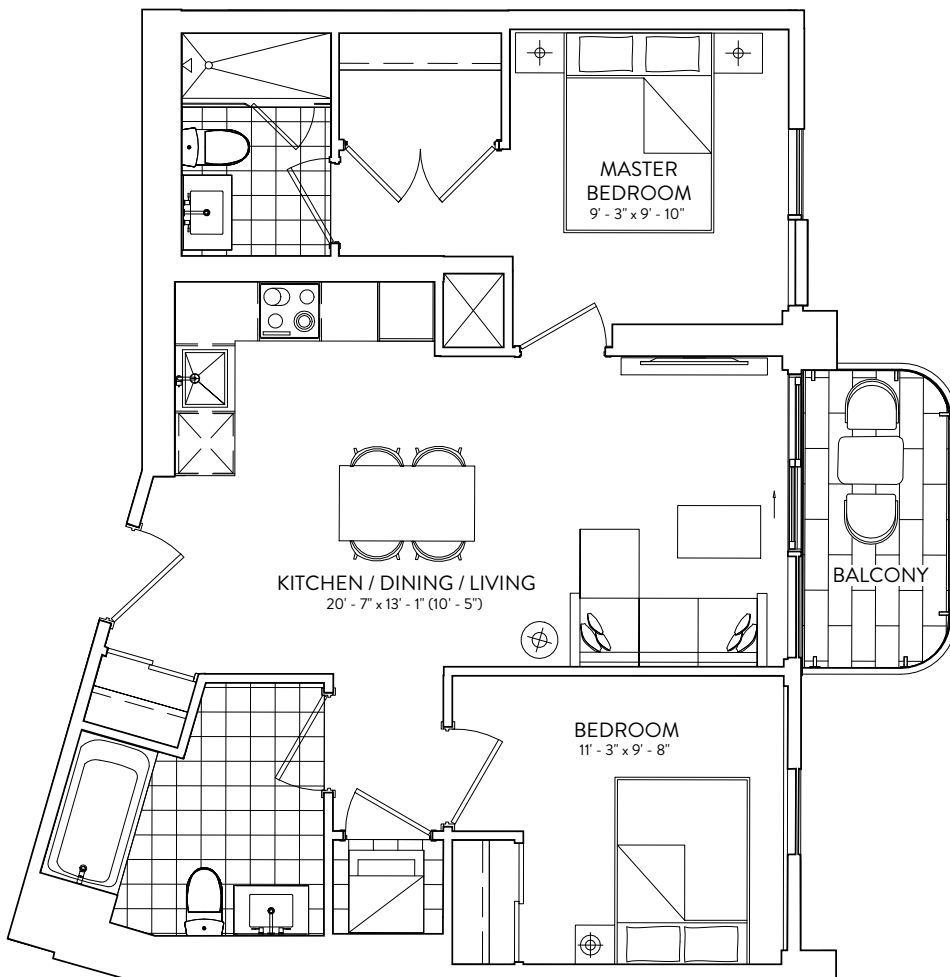
ELADCANADA

2B 746

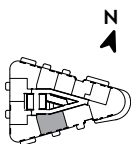
2 BEDROOM | 2 BATHROOM

INTERIOR: 746 SF | EXTERIOR: 43 SF

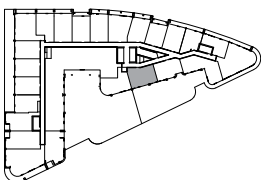
GALLERIA 



FLOORS 12-31



FLOORS 4-7, 9-11



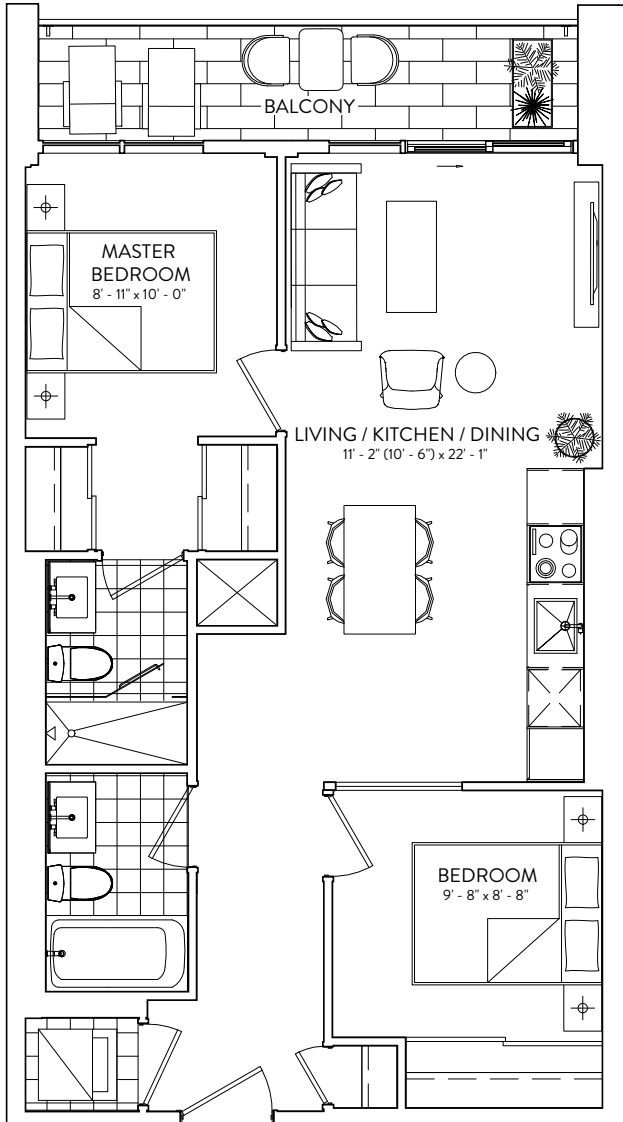
This plan is not to scale and is subject to architectural review and revision. The number of units per Floor and the number of floors may be reduced or increased at the vendor's sole discretion without notice. The purchaser acknowledges that the actual unit purchased may be a reverse layout to the plan shown. All materials, specifications, details and dimensions, if any, are approximate and subject to change without notice in order to comply with building site conditions and municipal, structural, vendor and/or architectural requirements. Actual living areas may vary from floor area stated. Floor areas have been measured and may vary in accordance with Bulletin #22 published by the Tarion Warranty Corporation. Bulkheads are not shown on this plan and may be located in areas of the Unit as required to provide venting and mechanical systems. Balconies, Terraces and Patios, if any, are exclusive use common elements shown for display purposes only and location and size are subject to change without notice. Window location, size and type may vary without notice. The length, width and directional position of the flooring are for illustration purposes only and may vary without notice. E.&O.E.

ELADCANADA

2B 747

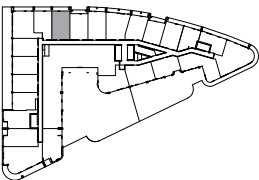
2 BEDROOM | 2 BATHROOM

INTERIOR: 747 SF | EXTERIOR: 75 SF



BALCONY
FLOORS 4-7 | EXTERIOR: 70 SF

FLOORS 3-7

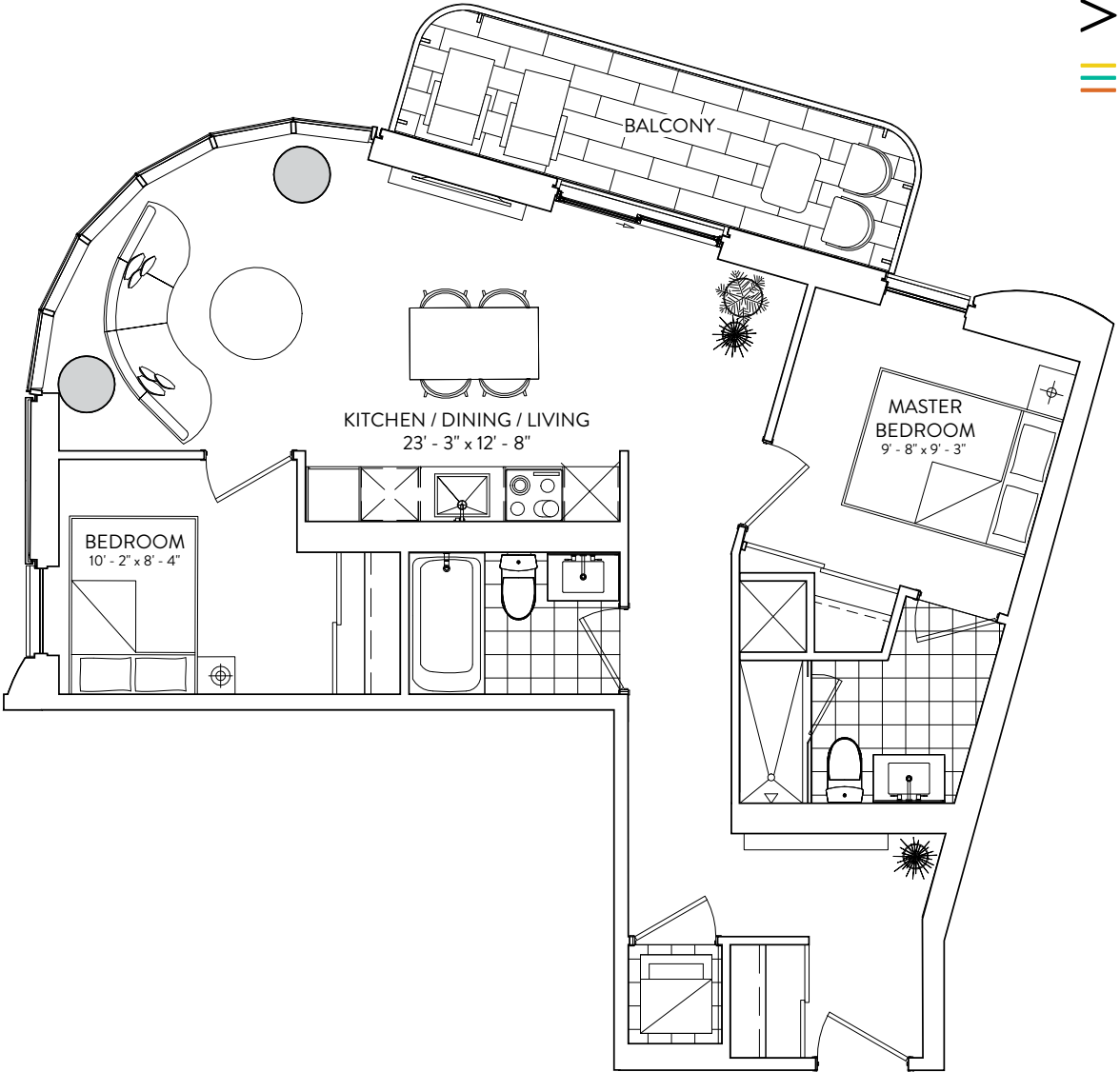


This plan is not to scale and is subject to architectural review and revision. The number of units per Floor and the number of floors may be reduced or increased at the vendor's sole discretion without notice. The purchaser acknowledges that the actual unit purchased may be a reverse layout to the plan shown. All materials, specifications, details and dimensions, if any, are approximate and subject to change without notice in order to comply with building site conditions and municipal, structural, vendor and/or architectural requirements. Actual living areas may vary from floor area stated. Floor areas have been measured and may vary in accordance with Bulletin #22 published by the Taron Warranty Corporation. Bulkheads are not shown on this plan and may be located in areas of the Unit as required to provide venting and mechanical systems. Balconies, Terraces and Patios, if any, are exclusive use common elements shown for display purposes only and location and size are subject to change without notice. Window location, size and type may vary without notice. The length, width and directional position of the flooring are for illustration purposes only and may vary without notice. E.&O.E.

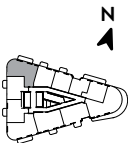
2B 786

2 BEDROOM | 2 BATHROOM

INTERIOR: 786 SF | EXTERIOR: 85 SF



FLOORS 12-31

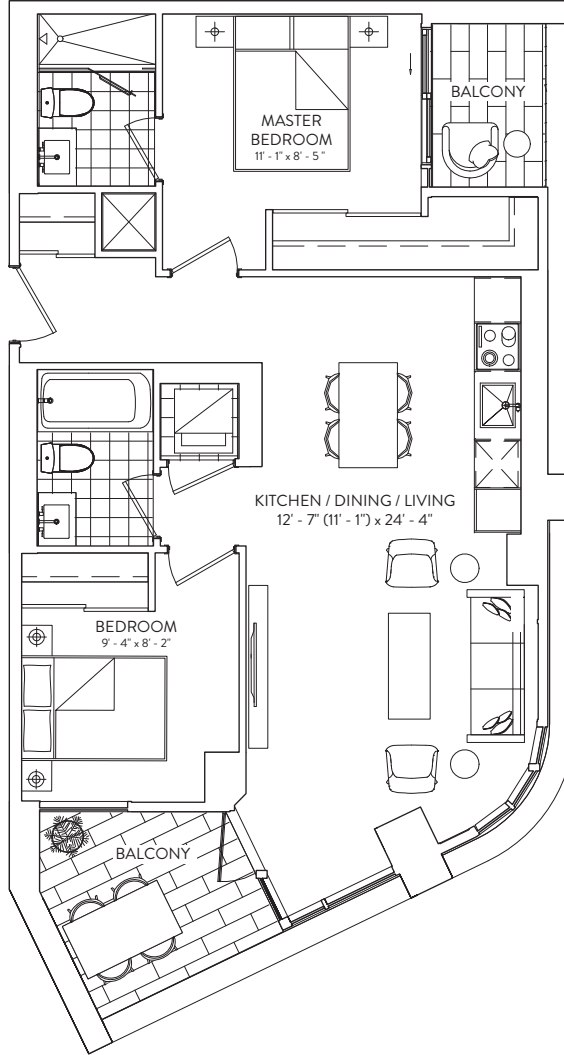


This plan is not to scale and is subject to architectural review and revision. The number of units per Floor and the number of floors may be reduced or increased at the vendor's sole discretion without notice. The purchaser acknowledges that the actual unit purchased may be a reverse layout to the plan shown. All materials, specifications, details and dimensions, if any, are approximate and subject to change without notice in order to comply with building site conditions and municipal, structural, vendor and/or architectural requirements. Actual living areas may vary from floor area stated. Floor areas have been measured and may vary in accordance with Bulletin #22 published by the Tarion Warranty Corporation. Bulkheads are not shown on this plan and may be located in areas of the Unit as required to provide venting and mechanical systems. Balconies, Terraces and Patios, if any, are exclusive use common elements shown for display purposes only and location and size are subject to change without notice. Window location, size and type may vary without notice. The length, width and directional position of the flooring are for illustration purposes only and may vary without notice. E.&O.E.

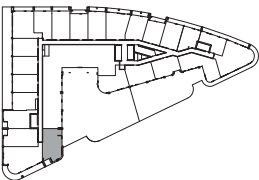
2B 825

2 BEDROOM | 2 BATHROOM

INTERIOR: 825 SF | EXTERIOR: 34 SF



FLOORS 3-4

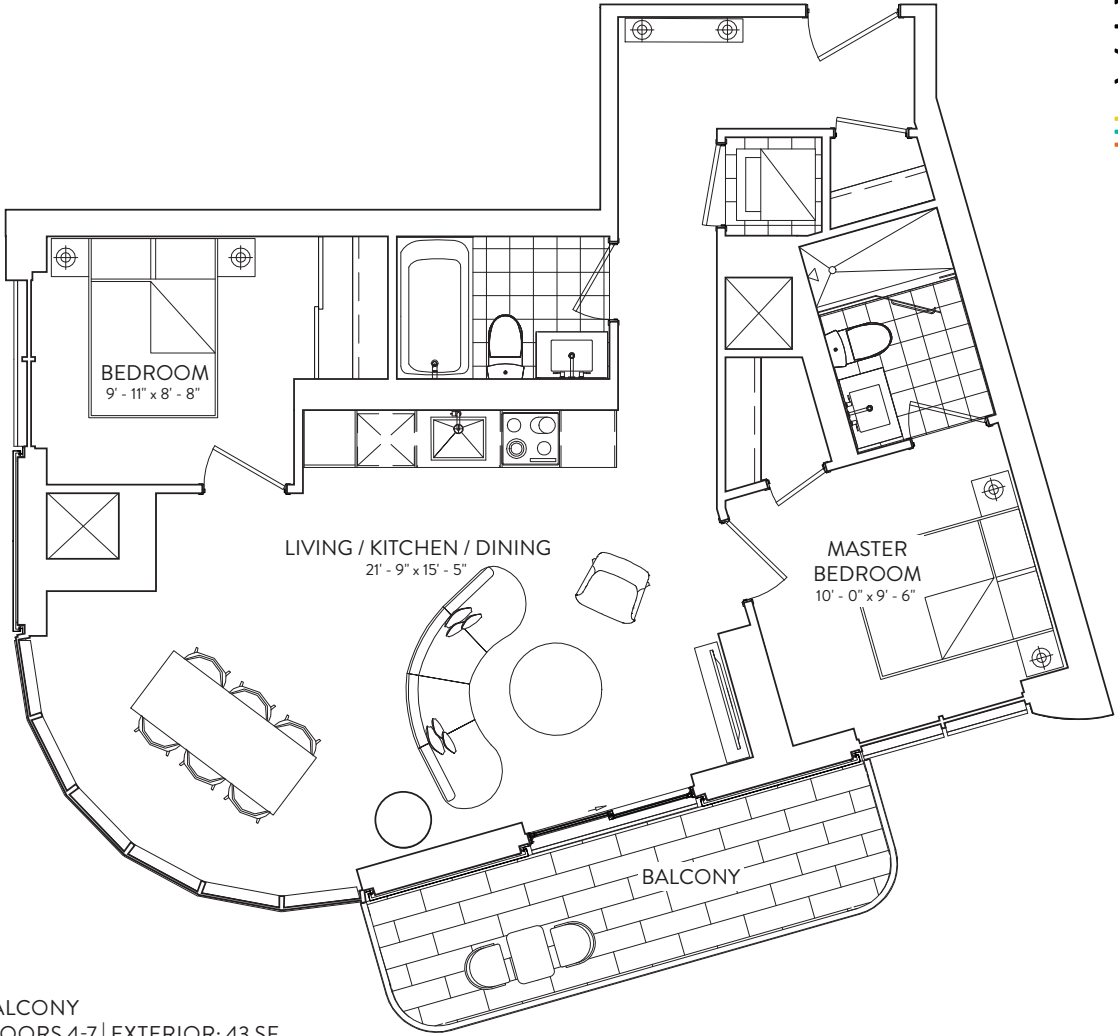


This plan is not to scale and is subject to architectural review and revision. The number of units per Floor and the number of floors may be reduced or increased at the vendor's sole discretion without notice. The purchaser acknowledges that the actual unit purchased may be a reverse layout to the plan shown. All materials, specifications, details and dimensions, if any, are approximate and subject to change without notice in order to comply with building site conditions and municipal, structural, vendor and/or architectural requirements. Actual living areas may vary from floor area stated. Floor areas have been measured and may vary in accordance with Bulletin #22 published by the Tarion Warranty Corporation. Bulkheads are not shown on this plan and may be located in areas of the Unit as required to provide venting and mechanical systems. Balconies, Terraces and Patios, if any, are exclusive use common elements shown for display purposes only and location and size are subject to change without notice. Window location, size and type may vary without notice. The length, width and directional position of the flooring are for illustration purposes only and may vary without notice. E.&O.E.

2B 843

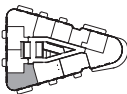
2 BEDROOM | 2 BATHROOM

INTERIOR: 843 SF | EXTERIOR: 87 SF

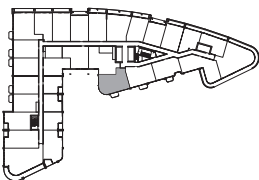


BALCONY
FLOORS 4-7 | EXTERIOR: 43 SF

FLOORS 9-31



FLOORS 4-7



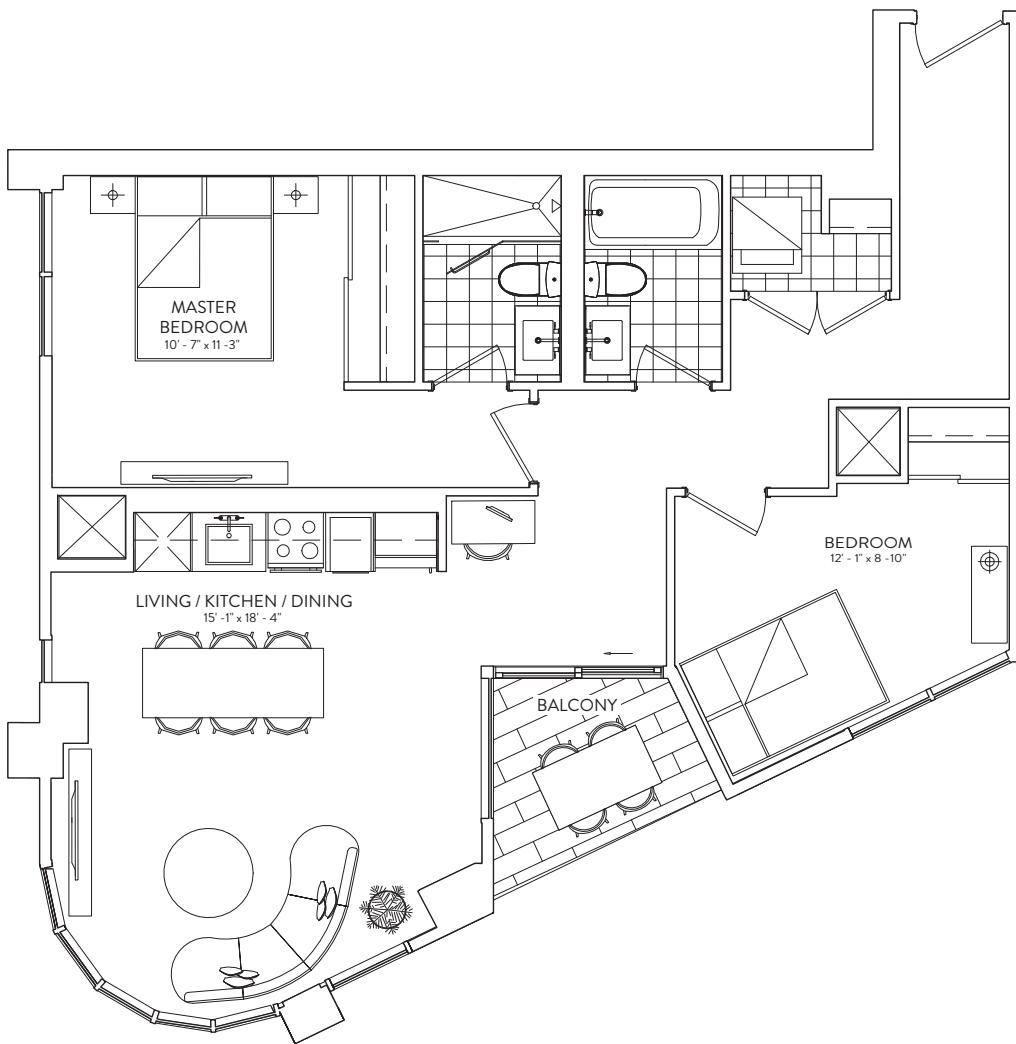
This plan is not to scale and is subject to architectural review and revision. The number of units per Floor and the number of floors may be reduced or increased at the vendor's sole discretion without notice. The purchaser acknowledges that the actual unit purchased may be a reverse layout to the plan shown. All materials, specifications, details and dimensions, if any, are approximate and subject to change without notice in order to comply with building site conditions and municipal, structural, vendor and/or architectural requirements. Actual living areas may vary from floor area stated. Floor areas have been measured and may vary in accordance with Bulletin #22 published by the Taron Warranty Corporation. Bulkheads are not shown on this plan and may be located in areas of the Unit as required to provide venting and mechanical systems. Balconies, Terraces and Patios, if any, are exclusive use common elements shown for display purposes only and location and size are subject to change without notice. Window location, size and type may vary without notice. The length, width and directional position of the flooring are for illustration purposes only and may vary without notice. E.&O.E.

2B 905

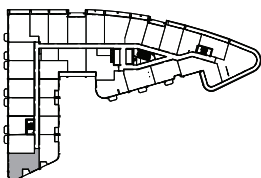
2 BEDROOM | 2 BATHROOM

INTERIOR: 905 SF | EXTERIOR: 38 SF

GALLERIA 



FLOORS 6-7



This plan is not to scale and is subject to architectural review and revision. The number of units per Floor and the number of floors may be reduced or increased at the vendor's sole discretion without notice. The purchaser acknowledges that the actual unit purchased may be a reverse layout to the plan shown. All materials, specifications, details and dimensions, if any, are approximate and subject to change without notice in order to comply with building site conditions and municipal, structural, vendor and/or architectural requirements. Actual living areas may vary from floor area stated. Floor areas have been measured and may vary in accordance with Bulletin #22 published by the Tarion Warranty Corporation. Bulkheads are not shown on this plan and may be located in areas of the Unit as required to provide venting and mechanical systems. Balconies, Terraces and Patios, if any, are exclusive use common elements shown for display purposes only and location and size are subject to change without notice. Window location, size and type may vary without notice. The length, width and directional position of the flooring are for illustration purposes only and may vary without notice. E.&O.E.

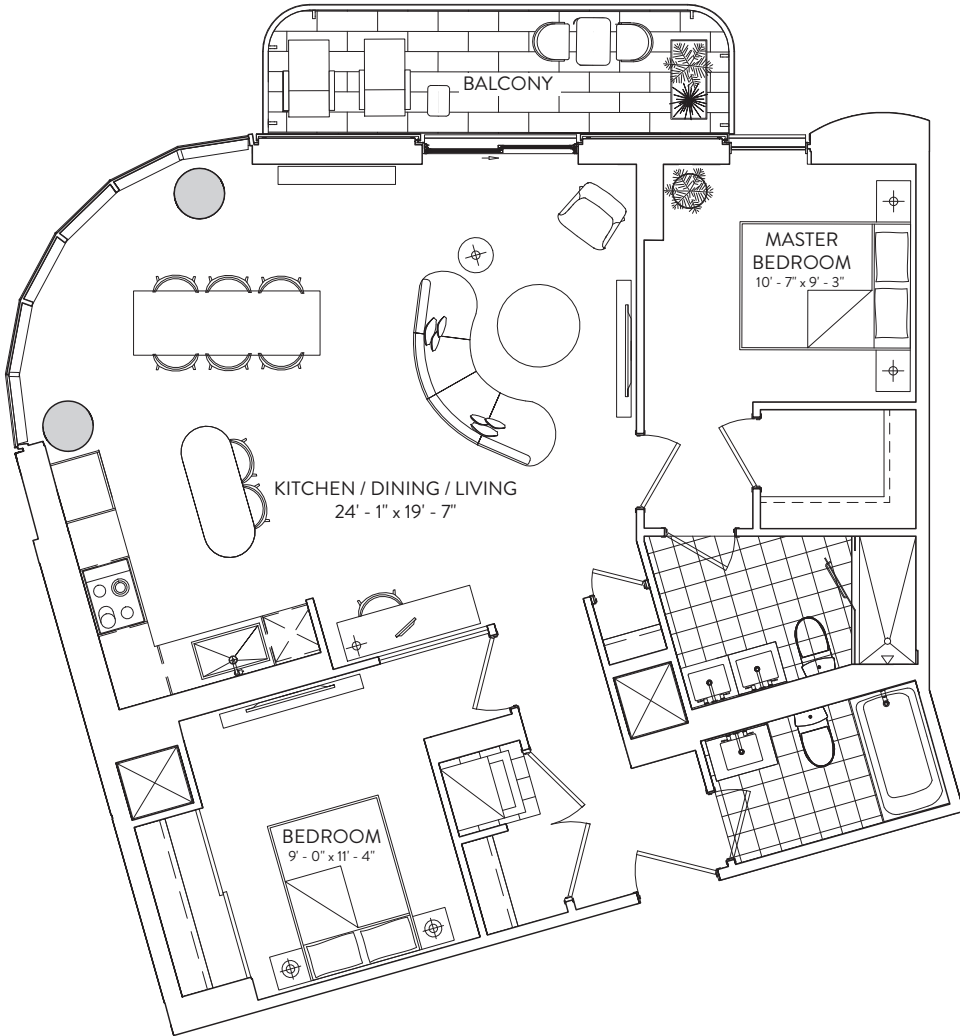
ELADCANADA

2B 1046

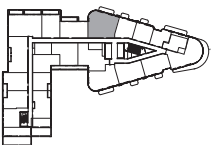
2 BEDROOM | 2 BATHROOM

INTERIOR: 1046 SF | EXTERIOR: 85 SF

GALLERIA 



FLOORS 9-10

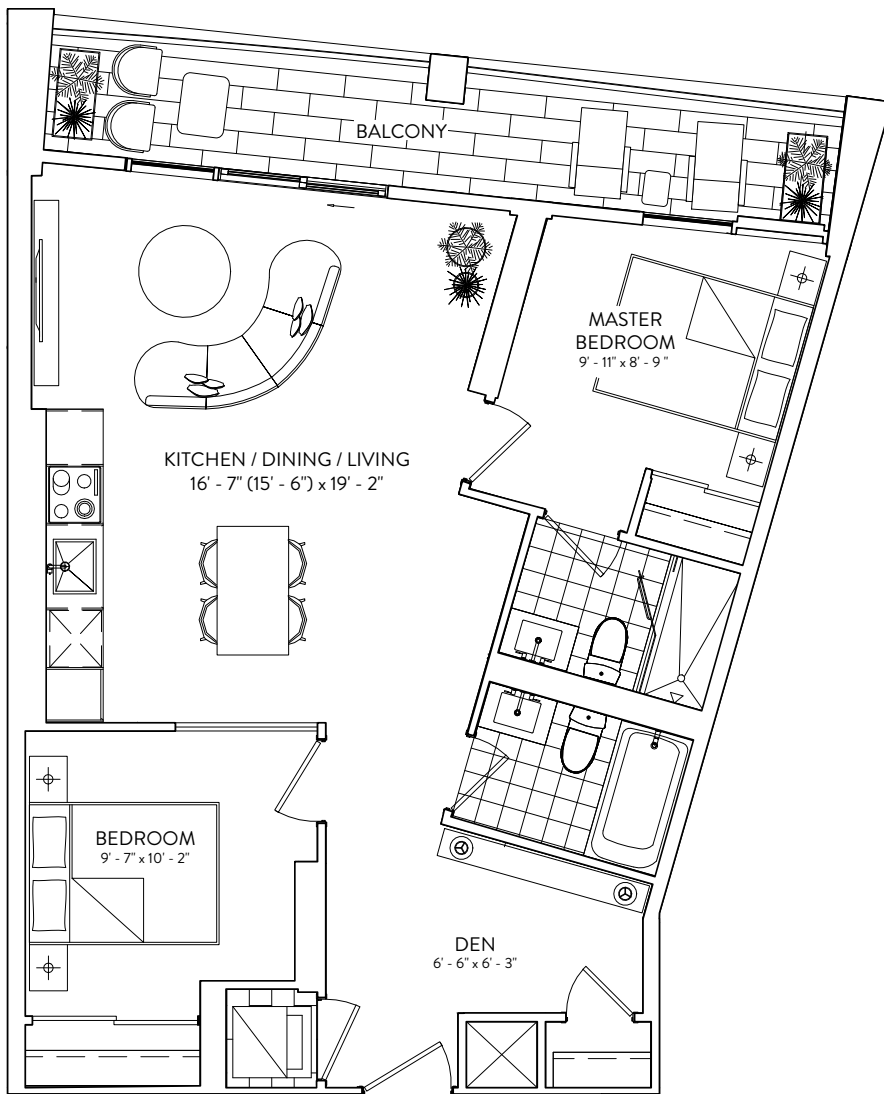


This plan is not to scale and is subject to architectural review and revision. The number of units per Floor and the number of floors may be reduced or increased at the vendor's sole discretion without notice. The purchaser acknowledges that the actual unit purchased may be a reverse layout to the plan shown. All materials, specifications, details and dimensions, if any, are approximate and subject to change without notice in order to comply with building site conditions and municipal, structural, vendor and/or architectural requirements. Actual living areas may vary from floor area stated. Floor areas have been measured and may vary in accordance with Bulletin #22 published by the Tarion Warranty Corporation. Bulkheads are not shown on this plan and may be located in areas of the Unit as required to provide venting and mechanical systems. Balconies, Terraces and Patios, if any, are exclusive use common elements shown for display purposes only and location and size are subject to change without notice. Window location, size and type may vary without notice. The length, width and directional position of the flooring are for illustration purposes only and may vary without notice. E.&O.E.

ELADCANADA

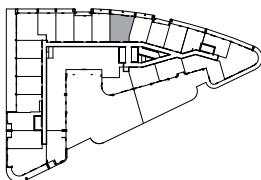
2B+D 822

2 BEDROOM + DEN | 2 BATHROOM
INTERIOR: 822 SF | EXTERIOR: 115 SF



BALCONY
FLOORS 4-7 | EXTERIOR: 107 SF

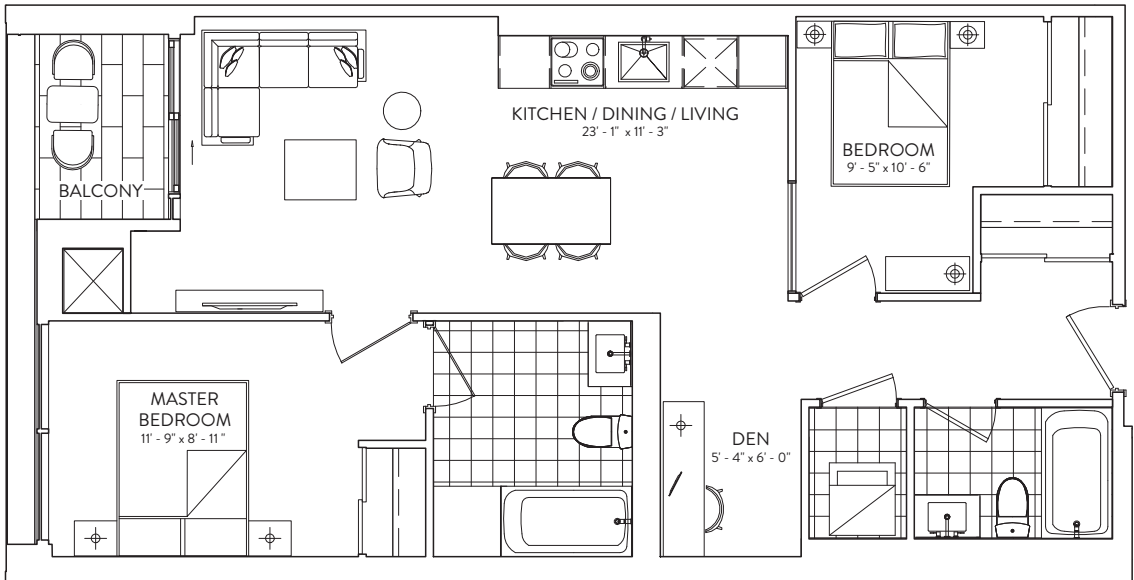
FLOORS 3-7



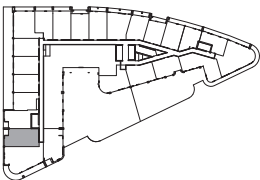
This plan is not to scale and is subject to architectural review and revision. The number of units per Floor and the number of floors may be reduced or increased at the vendor's sole discretion without notice. The purchaser acknowledges that the actual unit purchased may be a reverse layout to the plan shown. All materials, specifications, details and dimensions, if any, are approximate and subject to change without notice in order to comply with building site conditions and municipal, structural, vendor and/or architectural requirements. Actual living areas may vary from floor area stated. Floor areas have been measured and may vary in accordance with Bulletin #22 published by the Taron Warranty Corporation. Bulkheads are not shown on this plan and may be located in areas of the Unit as required to provide venting and mechanical systems. Balconies, Terraces and Patios, if any, are exclusive use common elements shown for display purposes only and location and size are subject to change without notice. Window location, size and type may vary without notice. The length, width and directional position of the flooring are for illustration purposes only and may vary without notice. E.&O.E.

2B+D 854

2 BEDROOM + DEN | 2 BATHROOM
INTERIOR: 854 SF | EXTERIOR: 32 SF



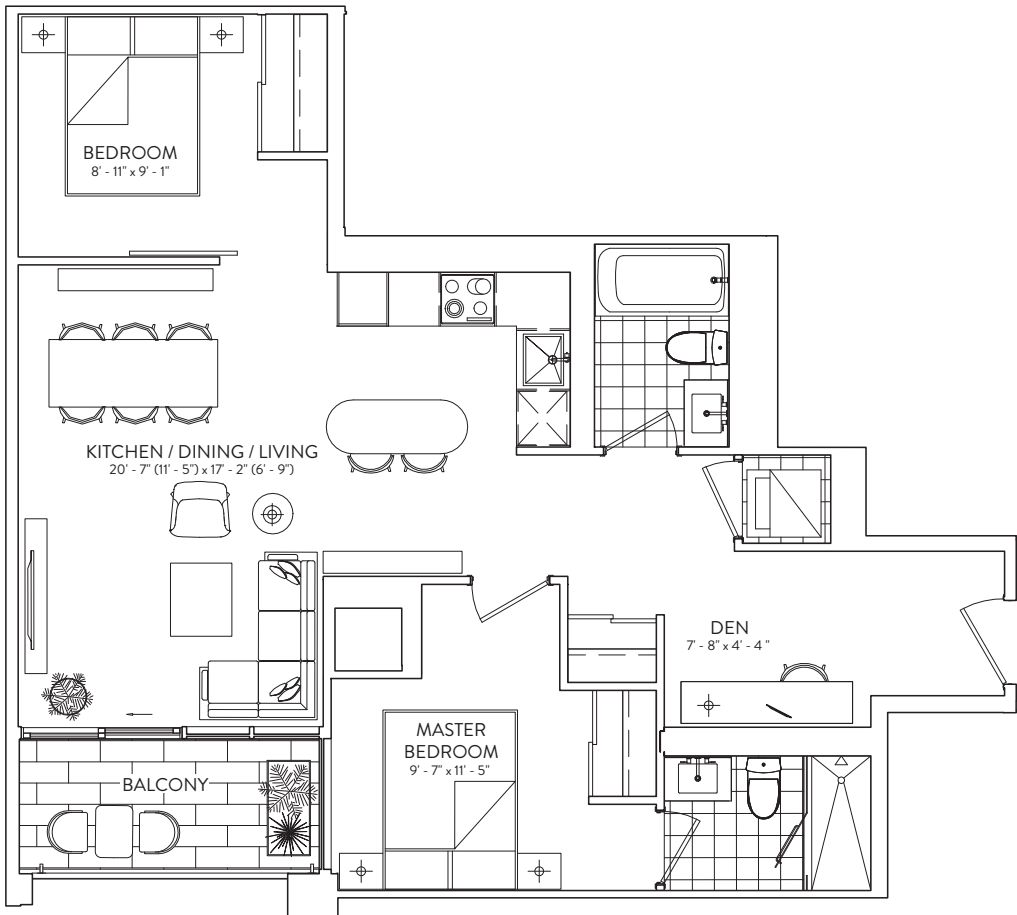
FLOORS 3-4



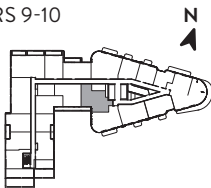
This plan is not to scale and is subject to architectural review and revision. The number of units per Floor and the number of floors may be reduced or increased at the vendor's sole discretion without notice. The purchaser acknowledges that the actual unit purchased may be a reverse layout to the plan shown. All materials, specifications, details and dimensions, if any, are approximate and subject to change without notice in order to comply with building site conditions and municipal, structural, vendor and/or architectural requirements. Actual living areas may vary from floor area stated. Floor areas have been measured and may vary in accordance with Bulletin #22 published by the Taron Warranty Corporation. Bulkheads are not shown on this plan and may be located in areas of the Unit as required to provide venting and mechanical systems. Balconies, Terraces and Patios, if any, are exclusive use common elements shown for display purposes only and location and size are subject to change without notice. Window location, size and type may vary without notice. The length, width and directional position of the flooring are for illustration purposes only and may vary without notice. E.&O.E.

2B+D 859

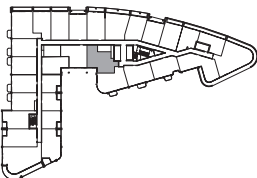
2 BEDROOM + DEN | 2 BATHROOM
INTERIOR: 859 SF | EXTERIOR: 54 SF



FLOORS 9-10



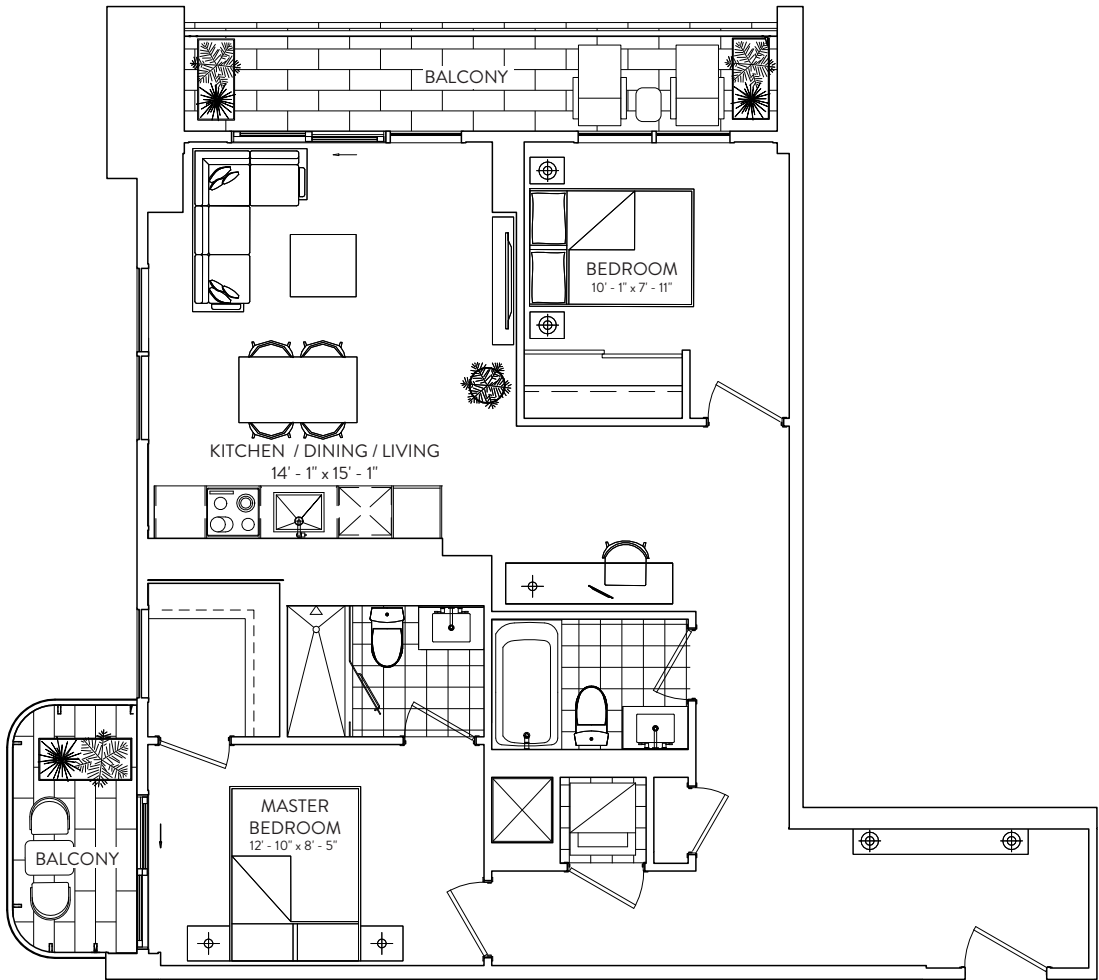
FLOORS 4-7



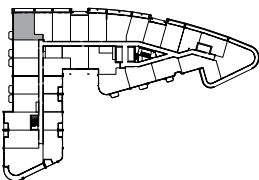
This plan is not to scale and is subject to architectural review and revision. The number of units per Floor and the number of floors may be reduced or increased at the vendor's sole discretion without notice. The purchaser acknowledges that the actual unit purchased may be a reverse layout to the plan shown. All materials, specifications, details and dimensions, if any, are approximate and subject to change without notice in order to comply with building site conditions and municipal, structural, vendor and/or architectural requirements. Actual living areas may vary from floor area stated. Floor areas have been measured and may vary in accordance with Bulletin #22 published by the Tarion Warranty Corporation. Bulkheads are not shown on this plan and may be located in areas of the Unit as required to provide venting and mechanical systems. Balconies, Terraces and Patios, if any, are exclusive use common elements shown for display purposes only and location and size are subject to change without notice. Window location, size and type may vary without notice. The length, width and directional position of the flooring are for illustration purposes only and may vary without notice. E.&O.E.

2B+D 917

2 BEDROOM + DEN | 2 BATHROOM
INTERIOR: 917 SF | EXTERIOR: 136 SF



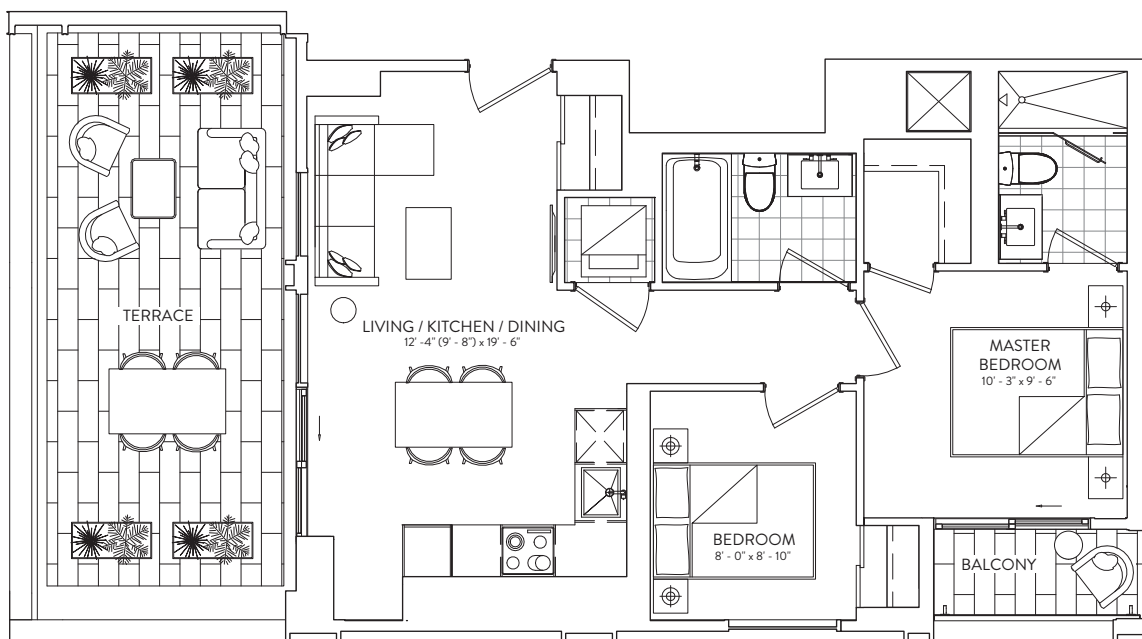
FLOORS 4-7



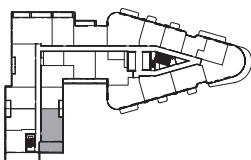
This plan is not to scale and is subject to architectural review and revision. The number of units per Floor and the number of floors may be reduced or increased at the vendor's sole discretion without notice. The purchaser acknowledges that the actual unit purchased may be a reverse layout to the plan shown. All materials, specifications, details and dimensions, if any, are approximate and subject to change without notice in order to comply with building site conditions and municipal, structural, vendor and/or architectural requirements. Actual living areas may vary from floor area stated. Floor areas have been measured and may vary in accordance with Bulletin #22 published by the Tarion Warranty Corporation. Bulkheads are not shown on this plan and may be located in areas of the Unit as required to provide venting and mechanical systems. Balconies, Terraces and Patios, if any, are exclusive use common elements shown for display purposes only and location and size are subject to change without notice. Window location, size and type may vary without notice. The length, width and directional position of the flooring are for illustration purposes only and may vary without notice. E.&O.E.

2B 681

INTERIOR: 681 SF | EXTERIOR: 219 SF | 2 BEDROOM | 2 BATHROOM



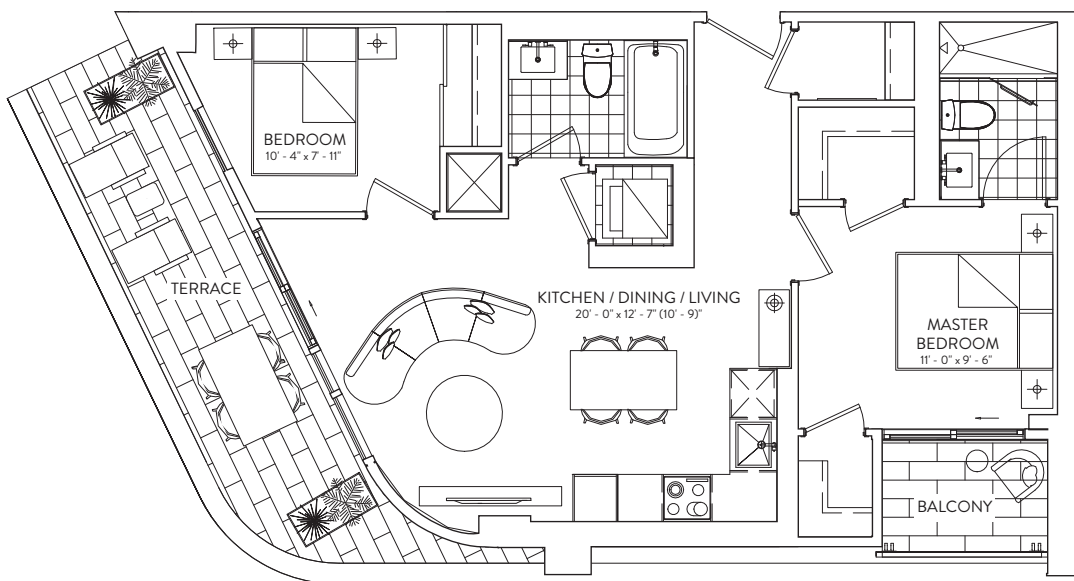
FLOOR 10



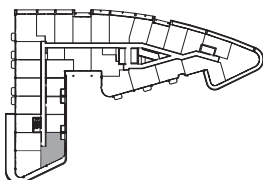
This plan is not to scale and is subject to architectural review and revision. The number of units per level and the number of floors may be reduced or increased at the vendor's sole discretion without notice. The purchaser acknowledges that the actual unit purchased may be a reverse layout to the plan shown. All materials, specifications, details and dimensions, if any, are approximate and subject to change without notice in order to comply with building site conditions and municipal, structural, vendor and/or architectural requirements. Actual living areas may vary from floor area stated. Floor areas have been measured and may vary in accordance with Bulletin #22 published by the Taron Warranty Corporation. Bulkheads are not shown on this plan and may be located in areas of the Unit as required to provide venting and mechanical systems. Balconies, Terraces and Patios, if any, are exclusive use common elements shown for display purposes only and location and size are subject to change without notice. Window location, size and type may vary without notice. The length, width and directional position of the flooring are for illustration purposes only and may vary without notice. E.&O.E.

2B 733

INTERIOR: 733 SF | EXTERIOR: 150 SF 2 BEDROOM | 2 BATHROOM



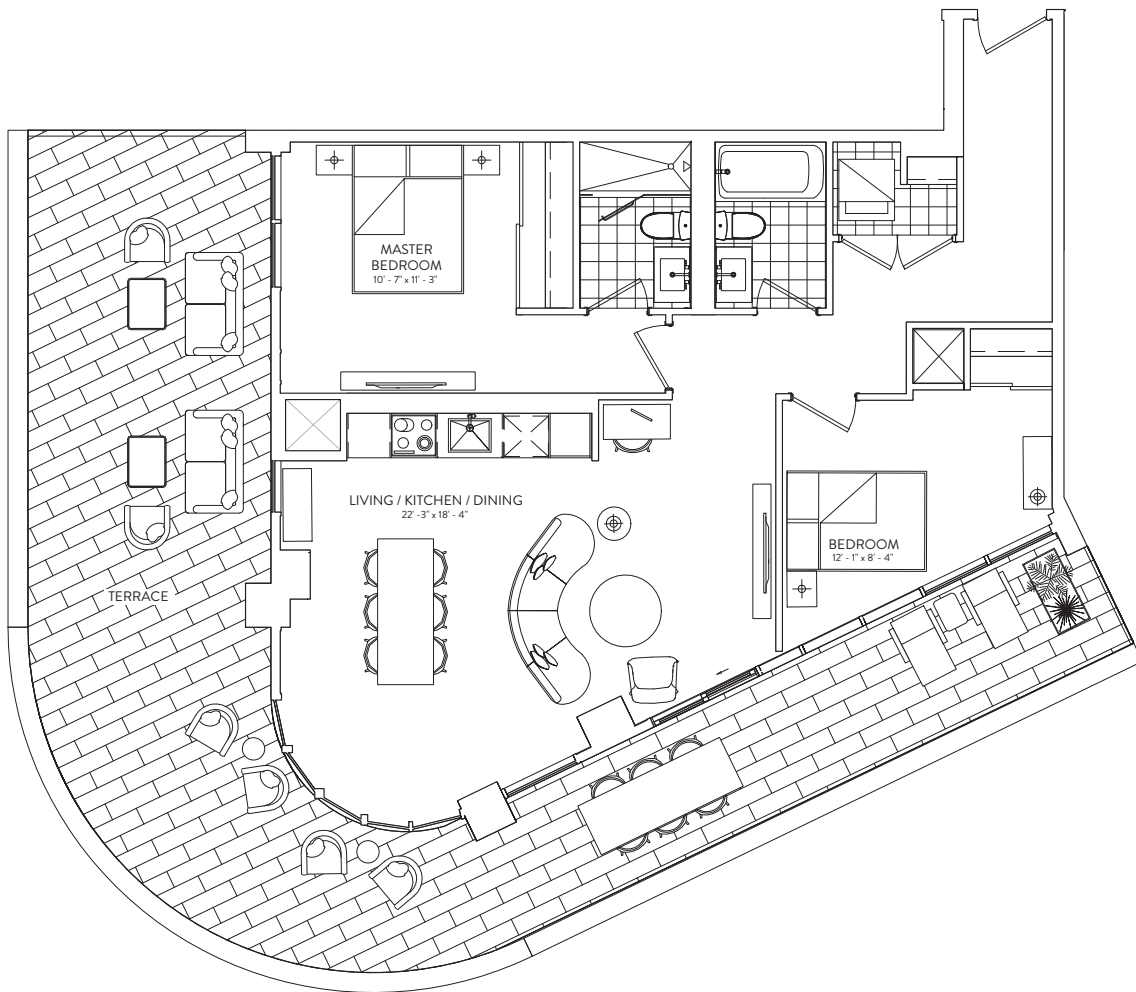
FLOOR 5



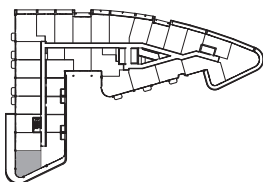
This plan is not to scale and is subject to architectural review and revision. The number of units per level and the number of floors may be reduced or increased at the vendor's sole discretion without notice. The purchaser acknowledges that the actual unit purchased may be a reverse layout to the plan shown. All materials, specifications, details and dimensions, if any, are approximate and subject to change without notice in order to comply with building site conditions and municipal, structural, vendor and/or architectural requirements. Actual living areas may vary from floor area stated. Floor areas have been measured and may vary in accordance with Bulletin #22 published by the Tarion Warranty Corporation. Bulkheads are not shown on this plan and may be located in areas of the Unit as required to provide venting and mechanical systems. Balconies, Terraces and Patios, if any, are exclusive use common elements shown for display purposes only and location and size are subject to change without notice. Window location, size and type may vary without notice. The length, width and directional position of the flooring are for illustration purposes only and may vary without notice. E.&O.E.

2B 955

INTERIOR: 955 SF | EXTERIOR: 590 SF | 2 BEDROOM | 2 BATHROOM



FLOOR 5



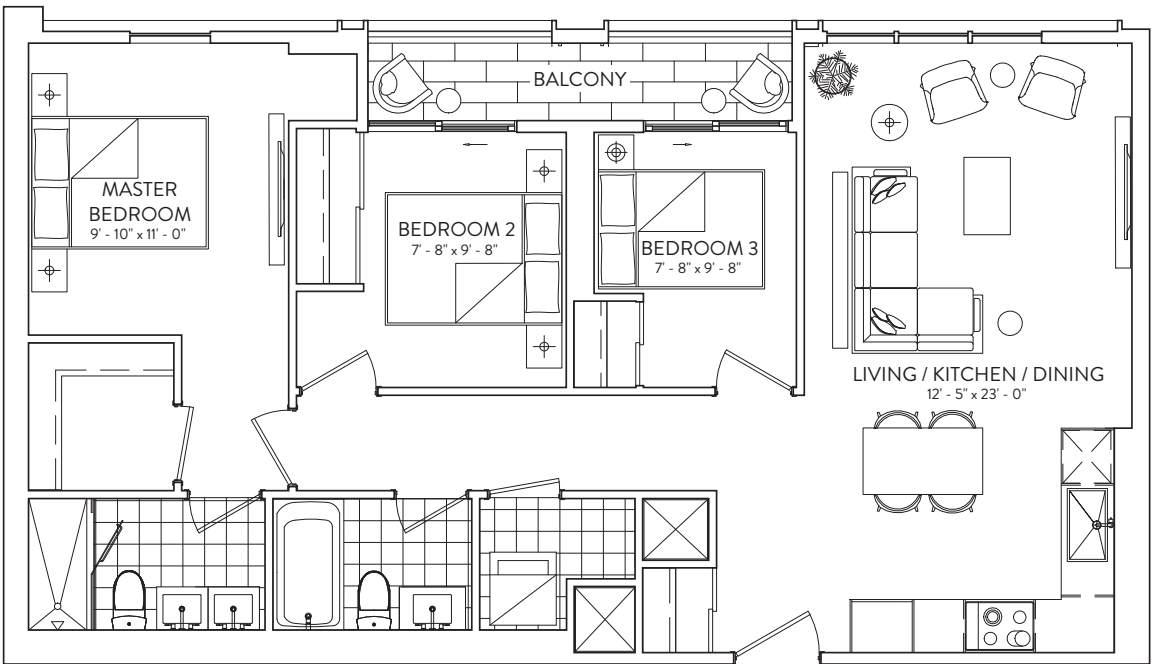
This plan is not to scale and is subject to architectural review and revision. The number of units per level and the number of floors may be reduced or increased at the vendor's sole discretion without notice. The purchaser acknowledges that the actual unit purchased may be a reverse layout to the plan shown. All materials, specifications, details and dimensions, if any, are approximate and subject to change without notice in order to comply with building site conditions and municipal, structural, vendor and/or architectural requirements. Actual living areas may vary from floor area stated. Floor areas have been measured and may vary in accordance with Bulletin #22 published by the Taron Warranty Corporation. Bulkheads are not shown on this plan and may be located in areas of the Unit as required to provide venting and mechanical systems. Balconies, Terraces and Patios, if any, are exclusive use common elements shown for display purposes only and location and size are subject to change without notice. Window location, size and type may vary without notice. The length, width and directional position of the flooring are for illustration purposes only and may vary without notice. E.&O.E.

3B 975

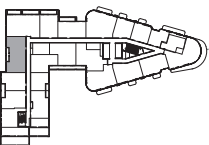
3 BEDROOM | 2 BATHROOM

INTERIOR: 975 SF | EXTERIOR: 52 SF

GALLERIA 



FLOORS 9-10



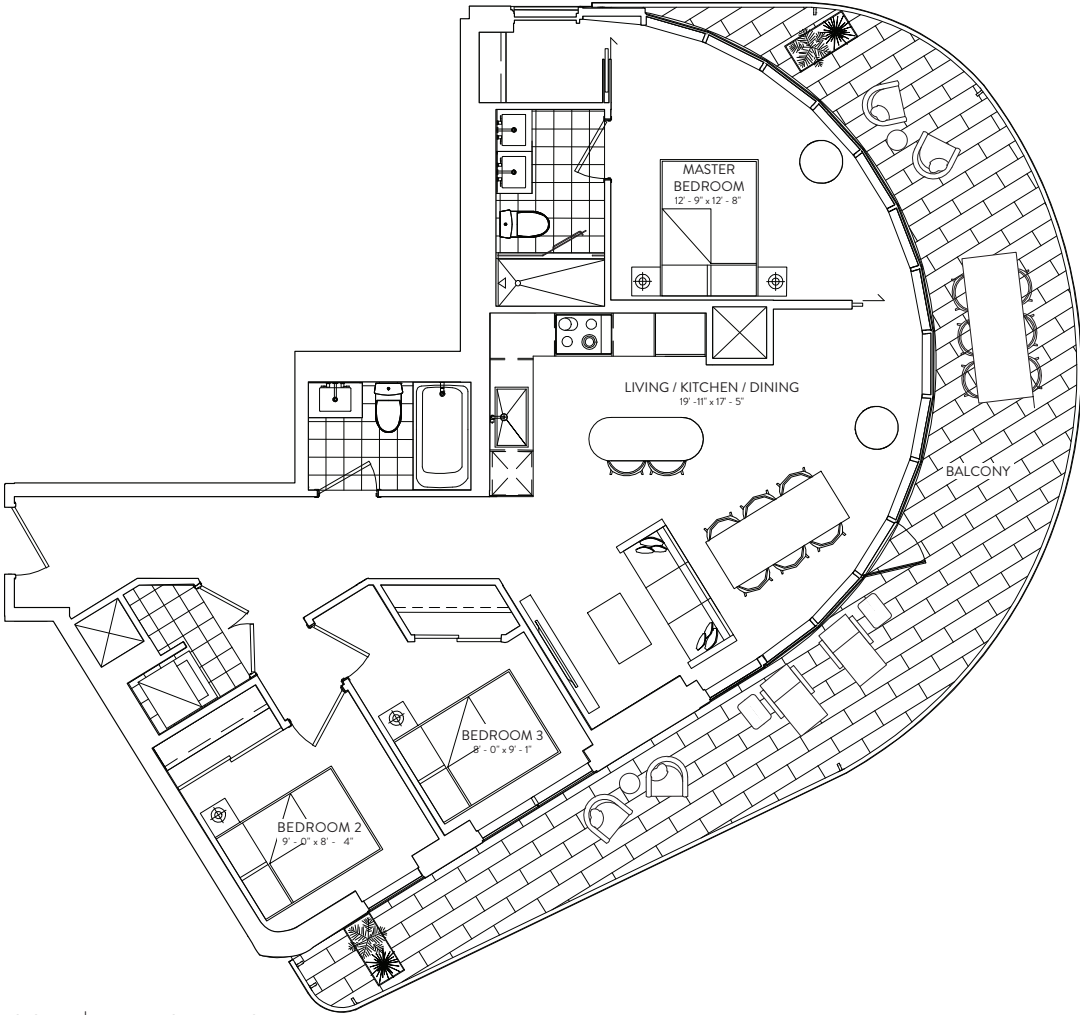
This plan is not to scale and is subject to architectural review and revision. The number of units per Floor and the number of floors may be reduced or increased at the vendor's sole discretion without notice. The purchaser acknowledges that the actual unit purchased may be a reverse layout to the plan shown. All materials, specifications, details and dimensions, if any, are approximate and subject to change without notice in order to comply with building site conditions and municipal, structural, vendor and/or architectural requirements. Actual living areas may vary from floor area stated. Floor areas have been measured and may vary in accordance with Bulletin #22 published by the Taron Warranty Corporation. Bulkheads are not shown on this plan and may be located in areas of the Unit as required to provide venting and mechanical systems. Balconies, Terraces and Patios, if any, are exclusive use common elements shown for display purposes only and location and size are subject to change without notice. Window location, size and type may vary without notice. The length, width and directional position of the flooring are for illustration purposes only and may vary without notice. E.&O.E.

ELADCANADA

3B 994

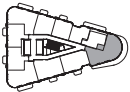
3 BEDROOM | 2 BATHROOM

INTERIOR: 994 SF | EXTERIOR: 360 SF

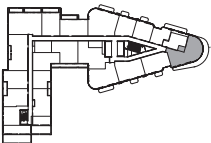


FLOOR 11 | EXTERIOR: 385 SF

FLOORS 11-27



FLOORS 9-10



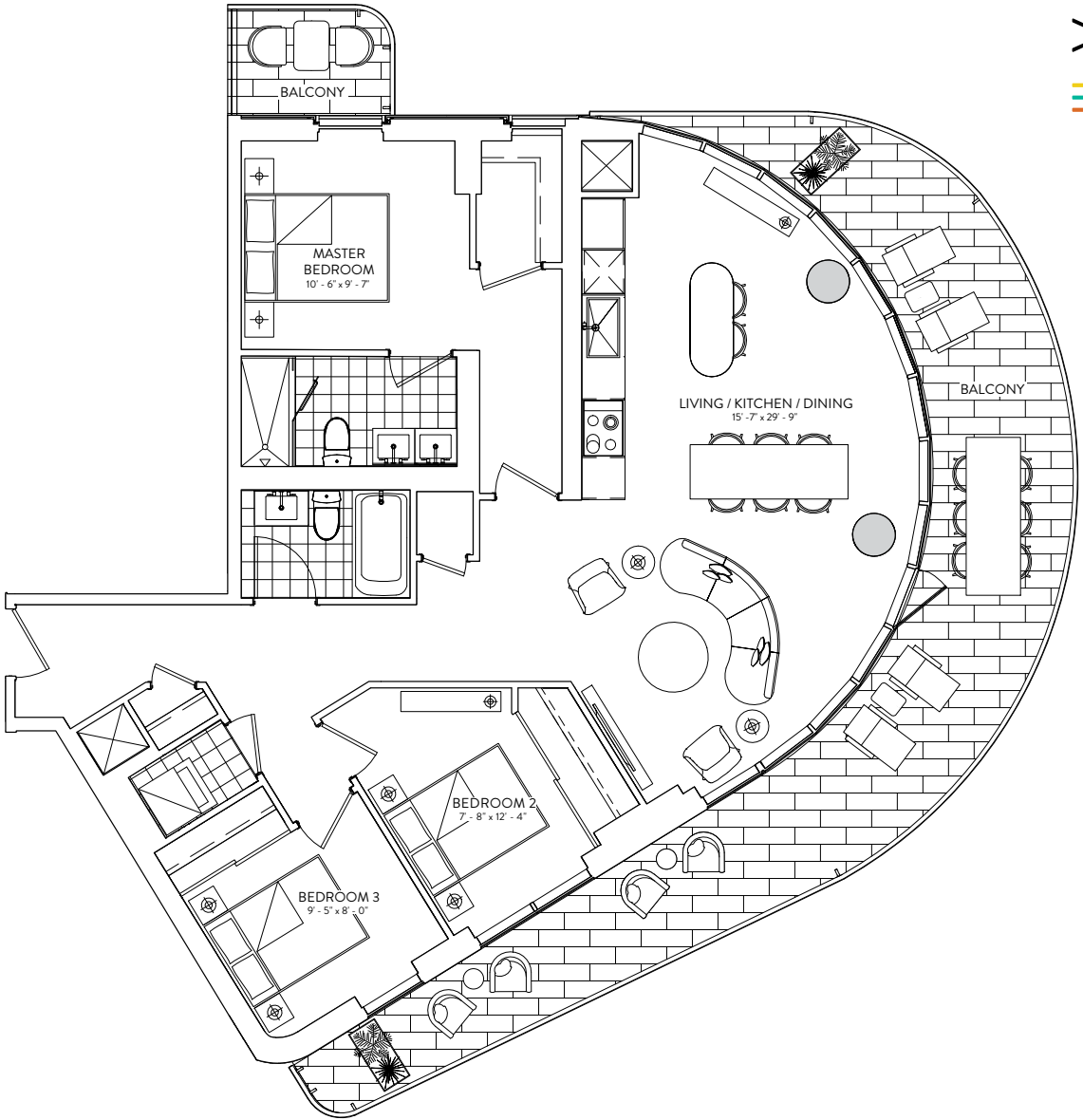
This plan is not to scale and is subject to architectural review and revision. The number of units per Floor and the number of floors may be reduced or increased at the vendor's sole discretion without notice. The purchaser acknowledges that the actual unit purchased may be a reverse layout to the plan shown. All materials, specifications, details and dimensions, if any, are approximate and subject to change without notice in order to comply with building site conditions and municipal, structural, vendor and/or architectural requirements. Actual living areas may vary from floor area stated. Floor areas have been measured and may vary in accordance with Bulletin #22 published by the Taron Warranty Corporation. Bulkheads are not shown on this plan and may be located in areas of the Unit as required to provide venting and mechanical systems. Balconies, Terraces and Patios, if any, are exclusive use common elements shown for display purposes only and location and size are subject to change without notice. Window location, size and type may vary without notice. The length, width and directional position of the flooring are for illustration purposes only and may vary without notice. E.&O.E.

3B 1184

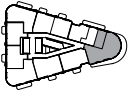
3 BEDROOM | 2 BATHROOM

INTERIOR: 1184 SF | EXTERIOR: 387 SF

GALLERIA 



FLOORS 28-31

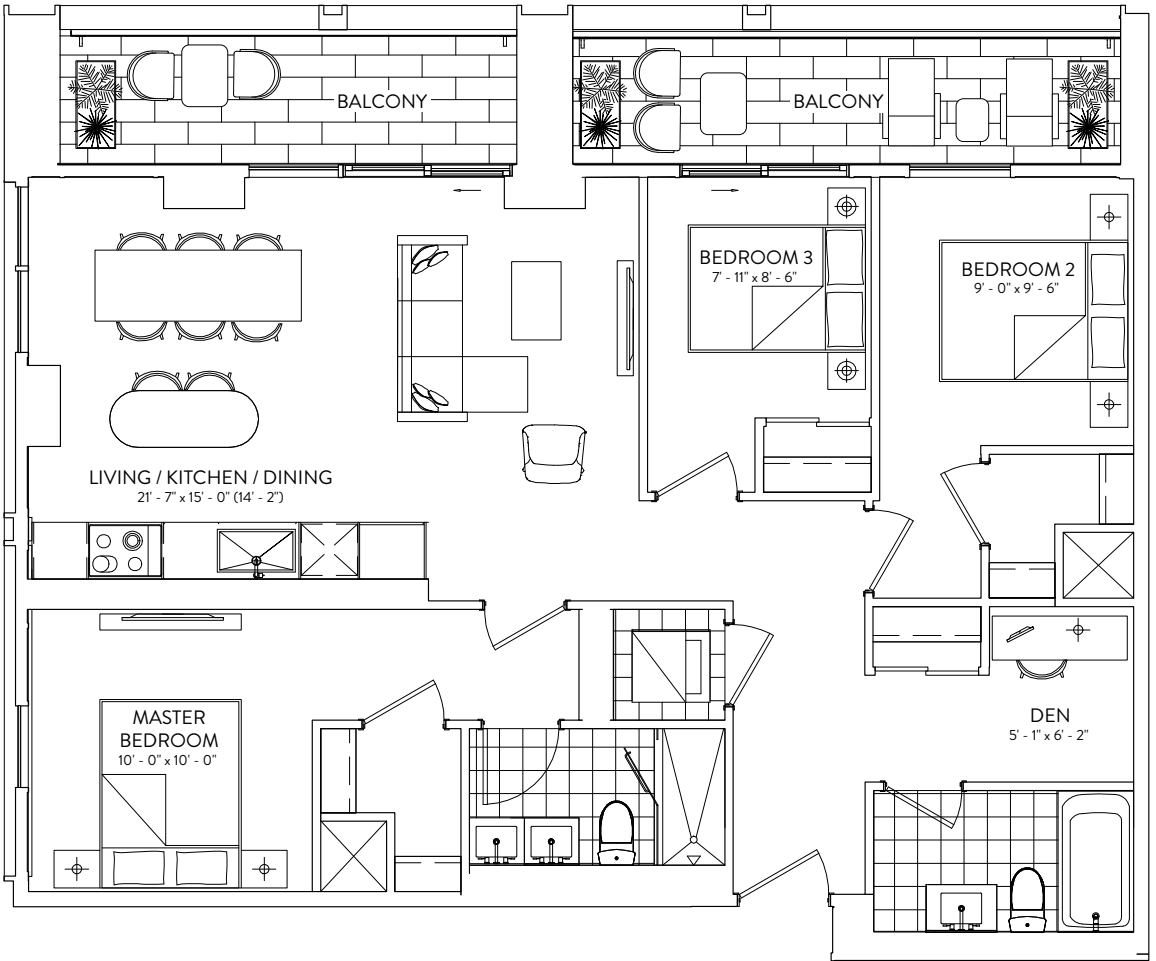


This plan is not to scale and is subject to architectural review and revision. The number of units per Floor and the number of floors may be reduced or increased at the vendor's sole discretion without notice. The purchaser acknowledges that the actual unit purchased may be a reverse layout to the plan shown. All materials, specifications, details and dimensions, if any, are approximate and subject to change without notice in order to comply with building site conditions and municipal, structural, vendor and/or architectural requirements. Actual living areas may vary from floor area stated. Floor areas have been measured and may vary in accordance with Bulletin #22 published by the Taron Warranty Corporation. Bulkheads are not shown on this plan and may be located in areas of the Unit as required to provide venting and mechanical systems. Balconies, Terraces and Patios, if any, are exclusive use common elements shown for display purposes only and location and size are subject to change without notice. Window location, size and type may vary without notice. The length, width and directional position of the flooring are for illustration purposes only and may vary without notice. E.&O.E.

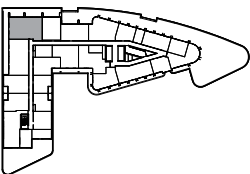
ELADCANADA

3B+D 1110

3 BEDROOM + DEN | 2 BATHROOM
 INTERIOR: 1110 SF | EXTERIOR: 158 SF



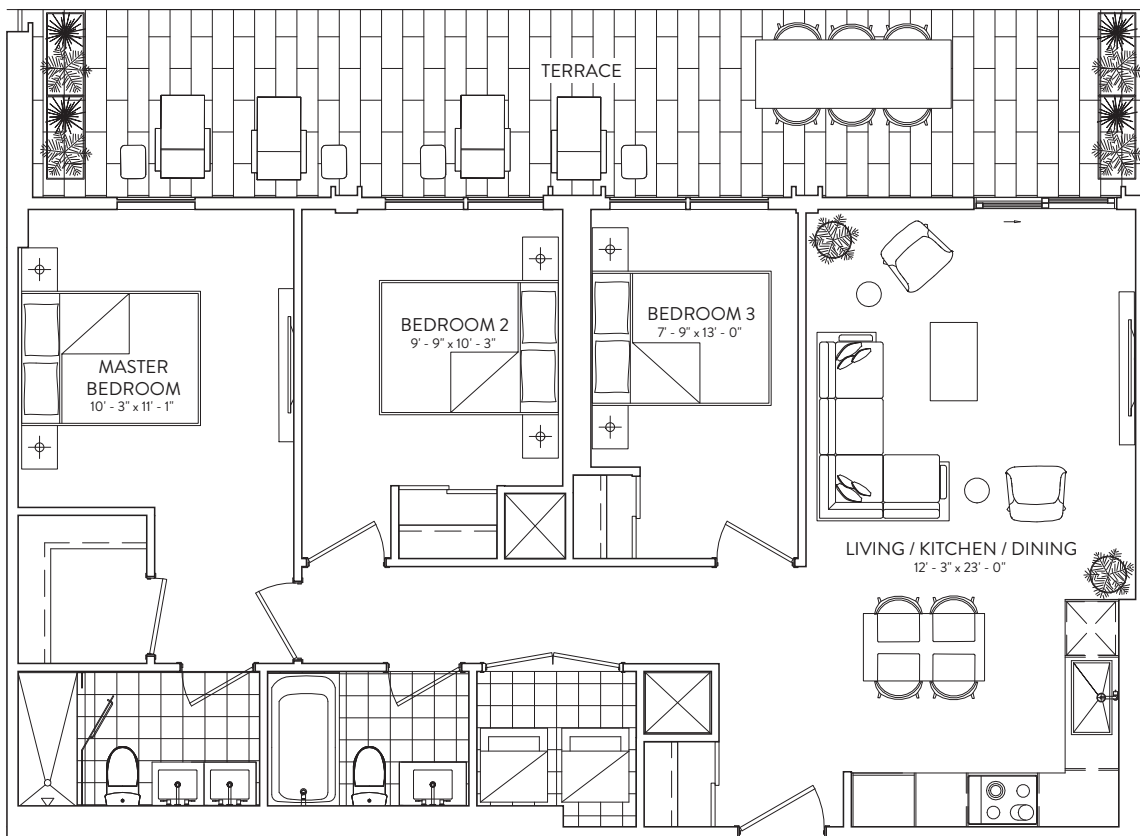
FLOORS 9-10



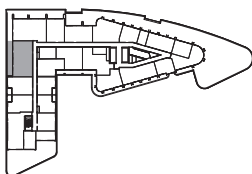
This plan is not to scale and is subject to architectural review and revision. The number of units per Floor and the number of floors may be reduced or increased at the vendor's sole discretion without notice. The purchaser acknowledges that the actual unit purchased may be a reverse layout to the plan shown. All materials, specifications, details and dimensions, if any, are approximate and subject to change without notice in order to comply with building site conditions and municipal, structural, vendor and/or architectural requirements. Actual living areas may vary from floor area stated. Floor areas have been measured and may vary in accordance with Bulletin #22 published by the Tarion Warranty Corporation. Bulkheads are not shown on this plan and may be located in areas of the Unit as required to provide venting and mechanical systems. Balconies, Terraces and Patios, if any, are exclusive use common elements shown for display purposes only and location and size are subject to change without notice. Window location, size and type may vary without notice. The length, width and directional position of the flooring are for illustration purposes only and may vary without notice. E.&O.E.

3B 1018 W

INTERIOR: 1018 SF | EXTERIOR: 269 SF | 3 BEDROOM | 2 BATHROOM



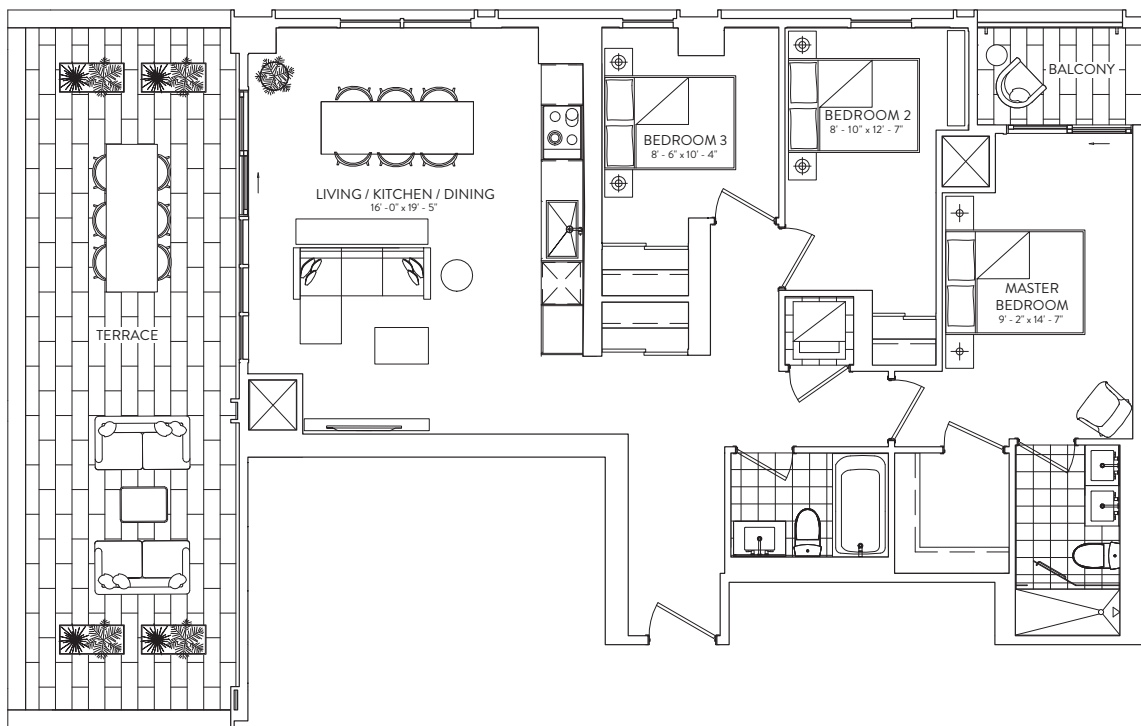
FLOOR 8



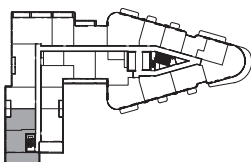
This plan is not to scale and is subject to architectural review and revision. The number of units per level and the number of floors may be reduced or increased at the vendor's sole discretion without notice. The purchaser acknowledges that the actual unit purchased may be a reverse layout to the plan shown. All materials, specifications, details and dimensions, if any, are approximate and subject to change without notice in order to comply with building site conditions and municipal, structural, vendor and/or architectural requirements. Actual living areas may vary from floor area stated. Floor areas have been measured and may vary in accordance with Bulletin #22 published by the Tarion Warranty Corporation. Bulkheads are not shown on this plan and may be located in areas of the Unit as required to provide venting and mechanical systems. Balconies, Terraces and Patios, if any, are exclusive use common elements shown for display purposes only and location and size are subject to change without notice. Window location, size and type may vary without notice. The length, width and directional position of the flooring are for illustration purposes only and may vary without notice. E.&O.E.

3B 1077 W

INTERIOR: 1077 SF | EXTERIOR: 305 SF | 3 BEDROOM | 2 BATHROOM



FLOOR 10

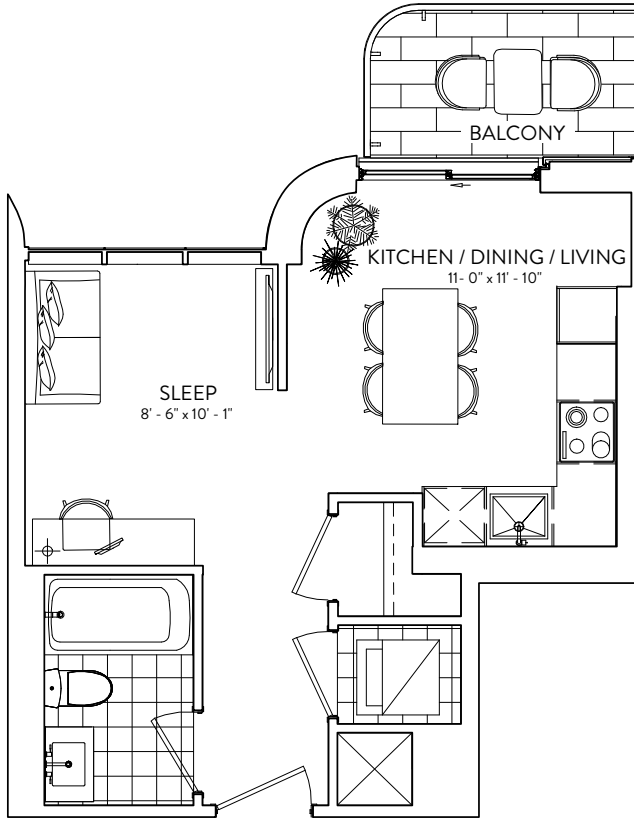



This plan is not to scale and is subject to architectural review and revision. The number of units per level and the number of floors may be reduced or increased at the vendor's sole discretion without notice. The purchaser acknowledges that the actual unit purchased may be a reverse layout to the plan shown. All materials, specifications, details and dimensions, if any, are approximate and subject to change without notice in order to comply with building site conditions and municipal, structural, vendor and/or architectural requirements. Actual living areas may vary from floor area stated. Floor areas have been measured and may vary in accordance with Bulletin #22 published by the Taron Warranty Corporation. Bulkheads are not shown on this plan and may be located in areas of the Unit as required to provide venting and mechanical systems. Balconies, Terraces and Patios, if any, are exclusive use common elements shown for display purposes only and location and size are subject to change without notice. Window location, size and type may vary without notice. The length, width and directional position of the flooring are for illustration purposes only and may vary without notice. E.&O.E.

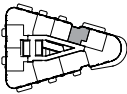
S 395

STUDIO | 1 BATHROOM

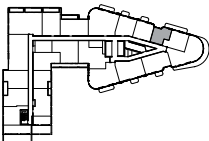
INTERIOR: 395 SF | EXTERIOR: 43 SF



FLOORS 12-14, 16-19, 21-27 



FLOORS 9-11



This plan is not to scale and is subject to architectural review and revision. The number of units per Floor and the number of floors may be reduced or increased at the vendor's sole discretion without notice. The purchaser acknowledges that the actual unit purchased may be a reverse layout to the plan shown. All materials, specifications, details and dimensions, if any, are approximate and subject to change without notice in order to comply with building site conditions and municipal, structural, vendor and/or architectural requirements. Actual living areas may vary from floor area stated. Floor areas have been measured and may vary in accordance with Bulletin #22 published by the Tarion Warranty Corporation. Bulkheads are not shown on this plan and may be located in areas of the Unit as required to provide venting and mechanical systems. Balconies, Terraces and Patios, if any, are exclusive use common elements shown for display purposes only and location and size are subject to change without notice. Window location, size and type may vary without notice. The length, width and directional position of the flooring are for illustration purposes only and may vary without notice. E.&O.E.