



GALLERIA

Limited time special incentives

Brand new, better than ever limited time deposit structure:

Only 15% Down Until Occupancy!

\$5,000 on Signing
Balance to 5% in 30 days
5% in ~~120 days~~ December 1, 2021
5% in ~~180 days~~ 460 days
Final 5% on occupancy (December 2025)

Special 2 Bedroom Deposit Structure:

\$5,000 on Signing
Balance to 5% in 30 days
5% in ~~120 days~~ December 1, 2021
5% in ~~180 days~~ 550 days
Final 5% on occupancy (December 2025)

Extended Deposit Structure - \$875k & Higher

\$5,000 on signing
Balance to 5% in 30 days
5% in ~~120 days~~ December 1, 2021
5% in ~~120 days~~ 2 YEARS!
Final 5% on occupancy (December 2025)

Maintenance Free Program (Up to \$20,000 in savings!!)

- All Studios, One bedroom & One Bedroom+Flex receive 1 year maintenance free!
- All Two bedrooms Units & Larger receive 2 years maintenance free!

\$10,000 Off Parking: ~~\$65,000~~ \$55,000 (available for all units)

Capped Development Charges:

Studio/1 BR/1 BR + Flex/Den/Media \$10,000, 2 BR and larger \$15,000

Right to Lease During Occupancy

Free Assignment*

Free Island For All Three Bedroom Units



NEW PLATINUM LAUNCH RELEASE

PRESENTATION CENTRE • 1152 DUPONT STREET • GALLERIAONTHEPARK.COM • SALES@GALLERIONTHEPARK.COM • 416-486-9666

Galleria On The Park is Toronto's most inspired new neighbourhood of condominiums, shops and places to gather, all located next to an incredible 8-acre park and a brand new 95,000sq ft. state-of-the-art community centre. Living at Galleria immerses you in a premium wellness lifestyle, with convenient access to on-site creative office spaces, high quality retail outlets, and excellent transit connections. Walkable, generous sidewalks lined with trees and plants, and colourfully patterned streets create an ideal environment for urban living.

Introducing Galleria III - The Third Chapter In The Story Of Galleria On The Park, And Your Next Opportunity To Purchase In This New Community.

Unit Type	Unit Model	Unit Size (Sq Ft.)	Exposure	Starting Price	Starting Floor (Higher floors may be available)
STUDIO	S 379	379	SOUTH	\$479,900	8
1BR	1B 473	473	NORTH	\$594,900	11
1BR+F	1B+F 508	508	NORTH	\$644,900	20
1 BR	1B 517	517	WEST	\$657,900	5
1BR+D	1B+D 543	543	WEST	\$676,900	22
1BR+D	1BR+D 544	544	WEST	\$663,900	13
1BR+D	1B+D 555	555	WEST	\$646,900	8
1 BR+F	1BR+F 606	606	WEST	\$719,900	3
1BR+F	1B+F 607	607	NORTH	\$709,900	3
1BR+F	1B+F 619	619	SOUTH EAST	\$715,900	10
1BR+F	1B+F 637	637	NORTH	\$797,900	8
2BR	2B 643	643	NORTH	\$779,900	3
2BR	2BR 655	655	WEST	\$765,900	4
1BR+F	1B+F 657	657	NORTH	\$742,900	3
2BR	2B 669	669	NORTH	\$789,900	3
2BR	2B 670	670	SOUTH	\$796,900	9
2 BR	2B 674	674	NORTH	\$812,900	10
2 BR	2B 682	682	SOUTH	\$983,900	3
2 BR	2B 693	693	SOUTH EAST	\$799,900	6
1BR+F	1BR+F 721	721	WEST	\$728,900	3
2BR	2B 732	732	SOUTH	\$791,900	5
2BR	2B 739	739	SOUTH EAST	\$916,900	8
2 BR	2B 747	747	NORTH	\$824,900	3
2BR	2B 746	746	SOUTH	\$819,900	4
2BR	2B 786	786	NORTH WEST	\$827,900	12
2BR+D	2B+D 822	822	NORTH	\$865,900	3
2BR	2B 843	843	SOUTH WEST	\$875,900	5
2BR+D	2B+D 854	854	WEST	\$850,900	4
2BR	2B 905	905	SOUTH WEST	\$939,900	7
3BR	3B 994	994	SOUTH EAST NORTH	\$1,111,900	9
3BR+D	3B+D 1110	1110	SOUTH EAST	\$1,163,900	10
3BR	3B 1225	1225	SOUTH EAST	\$1,183,900	5
3BR	3B 1426	1426	SOUTH EAST	\$1,820,900	8

Maintenance Free Program - Up To \$20,000 in Savings!

All Studios, One bedroom & One Bedroom+Flex receive 1 year maintenance free!
All Two bedrooms Units & Larger receive 2 years maintenance free!

Capped Development Charges:

\$0 on current Development & Educational Charges (Savings up to \$45,000)

Potential Increases On Development & Education Charges Capped:

Studio/1 BR/1 BR + Flex/Den: \$10,000
 2 BR and larger \$15,000

Right to Lease During Occupancy

Free Assignment*

Free Island For Three Bedroom Units

Estimated Occupancy:

December 2025

LIMITED TIME DEPOSIT STRUCTURE PROMOTION - ONLY 15% DOWN UNTIL OCCUPANCY

Preferred Extended Deposit Structure	2 Bedroom Preferred Extended Deposit Structure	Preferred Extended Deposit Structure Total Purchase Price \$875k & Up
\$5,000 on signing Balance to 5% in 30 days 5% in 420 December 1, 2021 5% in 270 460 days 5% on 365-days Occupancy	\$5,000 on signing Balance to 5% in 30 days 5% in 420 December 1, 2021 5% in 270 550 days 5% on 365-days Occupancy	\$5,000 on signing Balance to 5% in 30 days 5% in 420 December 1, 2021 5% in 270 730 days 5% on 365-days Occupancy

Maintenance: \$0.61 /sq.ft.

Including: High Speed Internet & Elad Link Tech Package

Excluding: Water, Hydro, Heat

Property Taxes:

Approximately 1%

Parking: ~~\$65,000~~-\$55,000
Locker: \$6,500

Parking Maintenance: \$59.95
Locker Maintenance: \$29.95



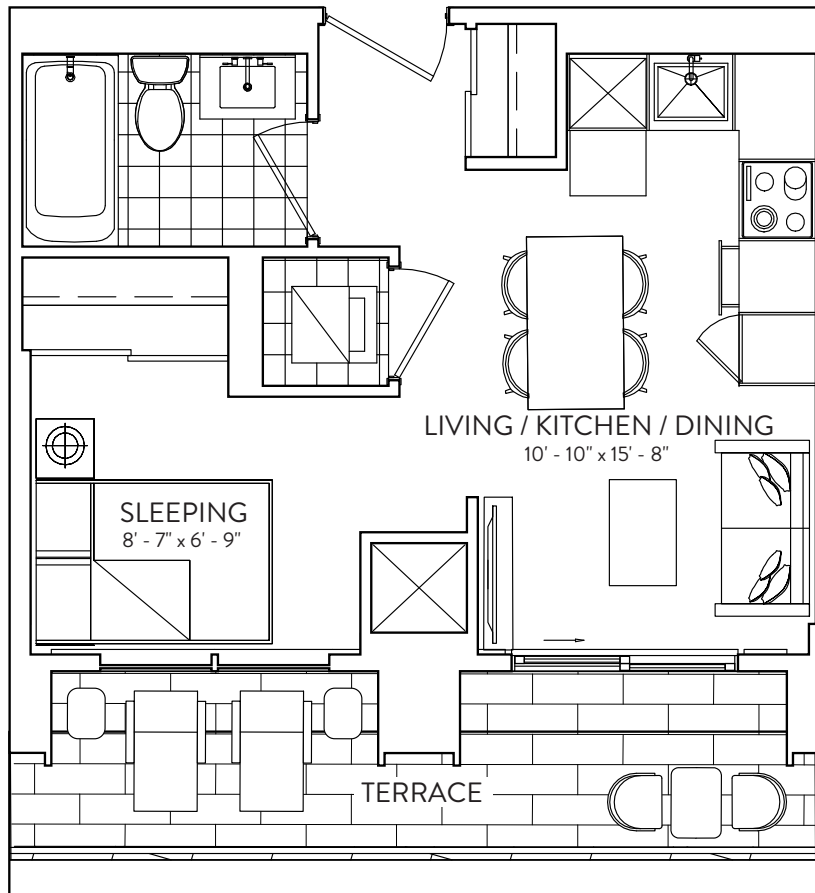
PRICES AND SPECIFICATIONS SUBJECT TO CHANGE WITHOUT NOTICE. E. & O.E. March 9, 2021

*On the first Assignment for qualifying Assignee subject to vendor's conditions for Assignments being met. Please see Sales Representative for details.

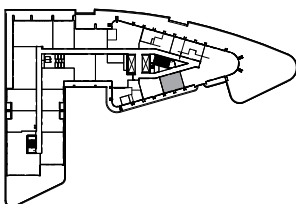
Note: This Limited Time offer may be changed or withdrawn at any time without notice. This offer may not be combined with any other offer or promotion. Certain conditions apply. Premiums apply to floors, balconies, terraces and views. Please see Sales Representative for full details. E & O.E.

S 379-S

INTERIOR: 379 SF | EXTERIOR: 95 SF STUDIO | 1 BATHROOM



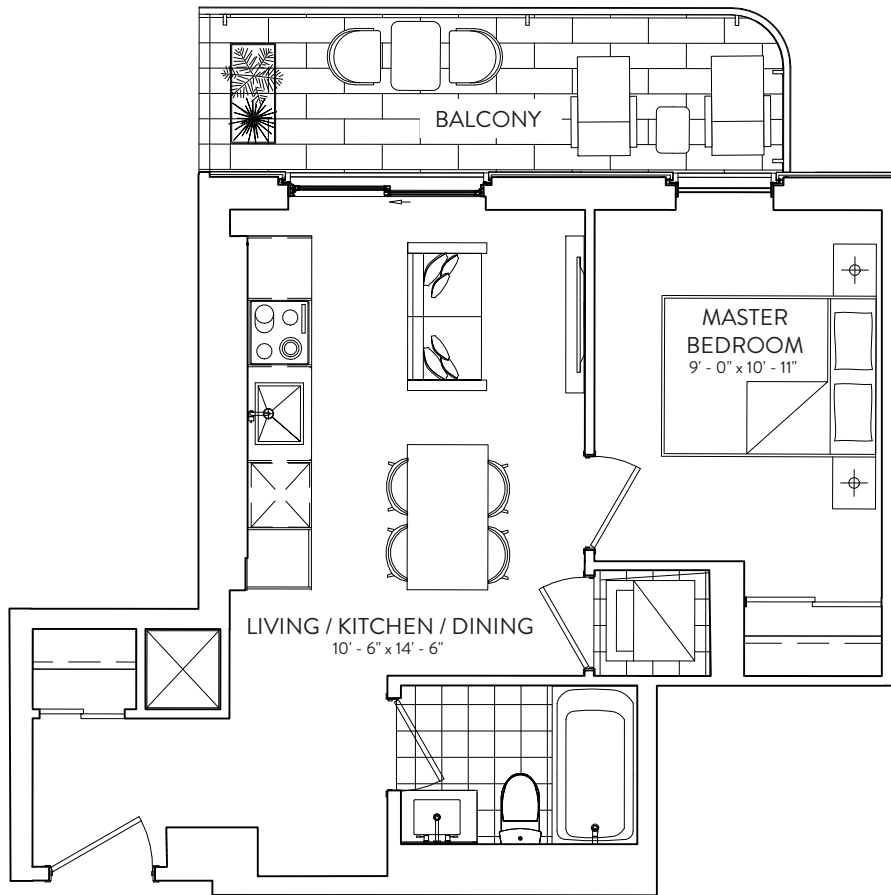
FLOOR 8



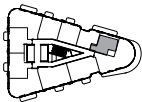
This plan is not to scale and is subject to architectural review and revision. The number of units per Floor and the number of floors may be reduced or increased at the vendor's sole discretion without notice. The purchaser acknowledges that the actual unit purchased may be a reverse layout to the plan shown. All materials, specifications, details and dimensions, if any, are approximate and subject to change without notice in order to comply with building site conditions and municipal, structural, vendor and/or architectural requirements. Actual living areas may vary from floor area stated. Floor areas have been measured and may vary in accordance with Bulletin #22 published by the Tarion Warranty Corporation. Bulkheads are not shown on this plan and may be located in areas of the Unit as required to provide venting and mechanical systems. Balconies, Terraces and Patios, if any, are exclusive use common elements shown for display purposes only and location and size are subject to change without notice. Window location, size and type may vary without notice. The length, width and directional position of the flooring are for illustration purposes only and may vary without notice. E.&O.E.

1B 473

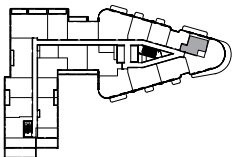
1 BEDROOM | 1 BATHROOM
INTERIOR: 473 SF | EXTERIOR: 86 SF



FLOORS 11-27



FLOORS 9-10



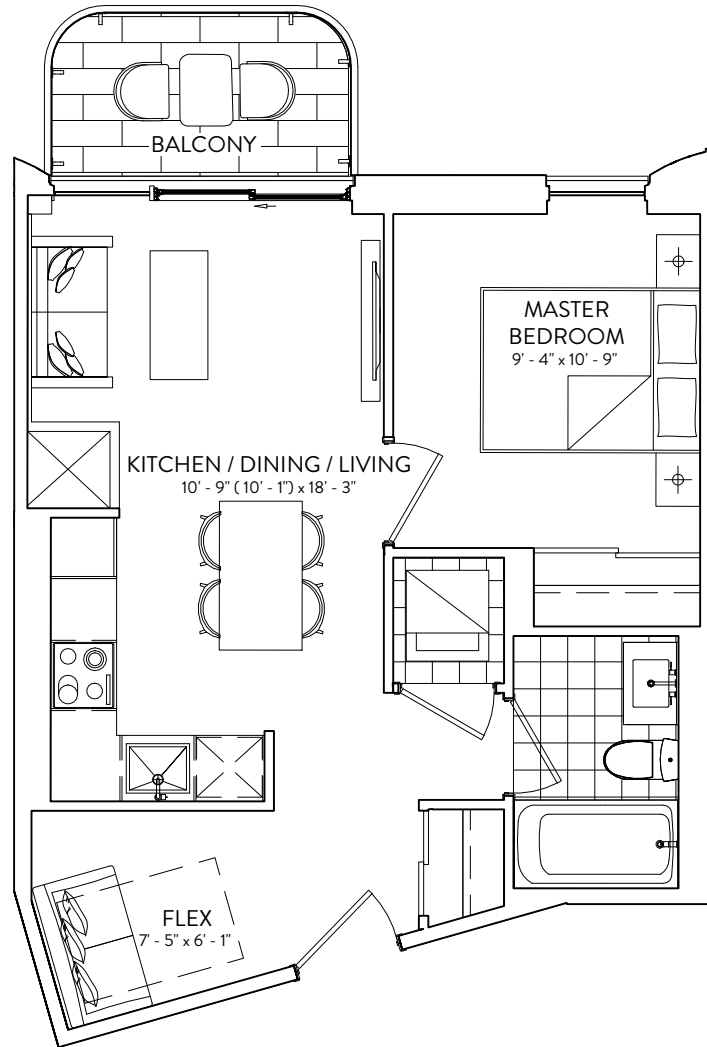
This plan is not to scale and is subject to architectural review and revision. The number of units per Floor and the number of floors may be reduced or increased at the vendor's sole discretion without notice. The purchaser acknowledges that the actual unit purchased may be a reverse layout to the plan shown. All materials, specifications, details and dimensions, if any, are approximate and subject to change without notice in order to comply with building site conditions and municipal, structural, vendor and/or architectural requirements. Actual living areas may vary from floor area stated. Floor areas have been measured and may vary in accordance with Bulletin #22 published by the Tarion Warranty Corporation. Bulkheads are not shown on this plan and may be located in areas of the Unit as required to provide venting and mechanical systems. Balconies, Terraces and Patios, if any, are exclusive use common elements shown for display purposes only and location and size are subject to change without notice. Window location, size and type may vary without notice. The length, width and directional position of the flooring are for illustration purposes only and may vary without notice. E.&O.E.

1B+F 508

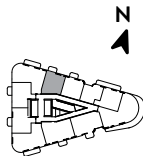
1 BEDROOM + FLEX | 1 BATHROOM

INTERIOR: 508 SF | EXTERIOR: 43 SF

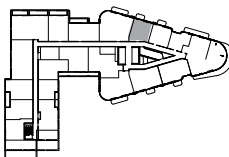
GALLERIA



FLOORS 12-31



FLOORS 9-10

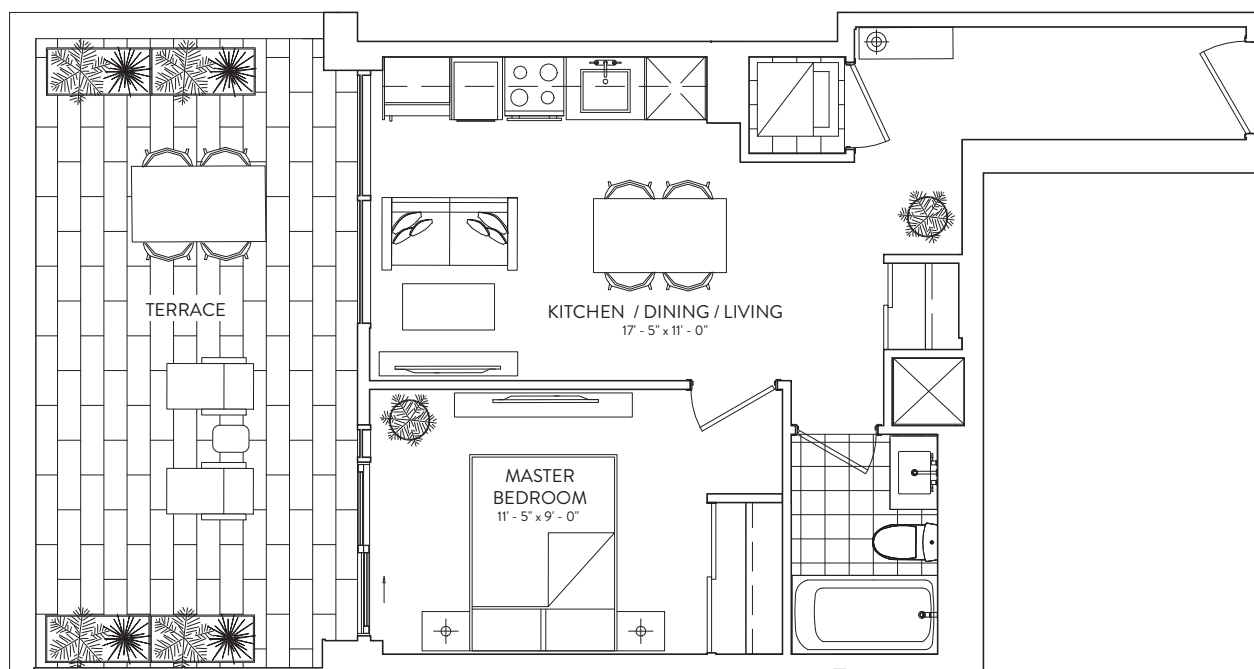


This plan is not to scale and is subject to architectural review and revision. The number of units per Floor and the number of floors may be reduced or increased at the vendor's sole discretion without notice. The purchaser acknowledges that the actual unit purchased may be a reverse layout to the plan shown. All materials, specifications, details and dimensions, if any, are approximate and subject to change without notice in order to comply with building site conditions and municipal, structural, vendor and/or architectural requirements. Actual living areas may vary from floor area stated. Floor areas have been measured and may vary in accordance with Bulletin #22 published by the Tarion Warranty Corporation. Bulkheads are not shown on this plan and may be located in areas of the Unit as required to provide venting and mechanical systems. Balconies, Terraces and Patios, if any, are exclusive use common elements shown for display purposes only and location and size are subject to change without notice. Window location, size and type may vary without notice. The length, width and directional position of the flooring are for illustration purposes only and may vary without notice. E.&O.E.

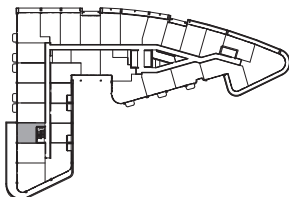
ELADCANADA

1B 517

INTERIOR: 517 SF | EXTERIOR: 226 SF | 1 BEDROOM | 1 BATHROOM



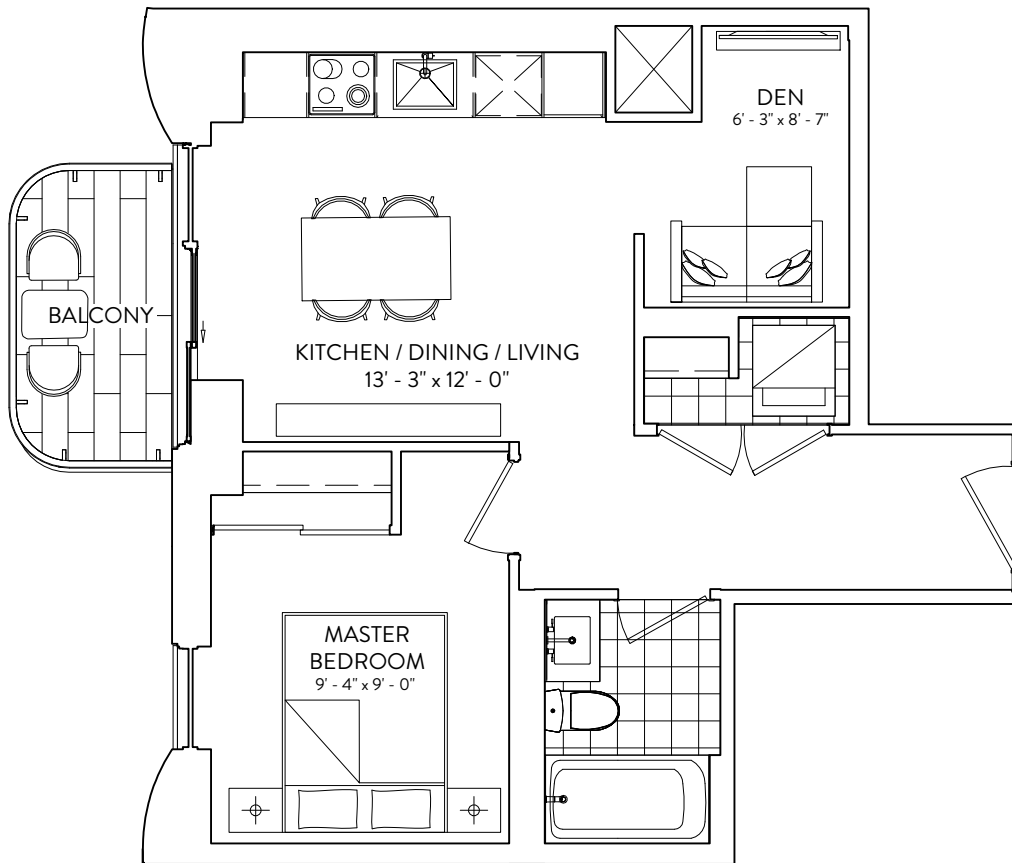
FLOOR 5



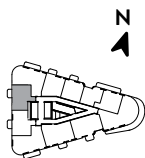
This plan is not to scale and is subject to architectural review and revision. The number of units per level and the number of floors may be reduced or increased at the vendor's sole discretion without notice. The purchaser acknowledges that the actual unit purchased may be a reverse layout to the plan shown. All materials, specifications, details and dimensions, if any, are approximate and subject to change without notice in order to comply with building site conditions and municipal, structural, vendor and/or architectural requirements. Actual living areas may vary from floor area stated. Floor areas have been measured and may vary in accordance with Bulletin #22 published by the Tarion Warranty Corporation. Bulkheads are not shown on this plan and may be located in areas of the Unit as required to provide venting and mechanical systems. Balconies, Terraces and Patios, if any, are exclusive use common elements shown for display purposes only and location and size are subject to change without notice. Window location, size and type may vary without notice. The length, width and directional position of the flooring are for illustration purposes only and may vary without notice. E.&O.E.

1B+D 543

1 BEDROOM + DEN | 1 BATHROOM
INTERIOR: 543 SF | EXTERIOR: 40 SF



FLOORS 12-31

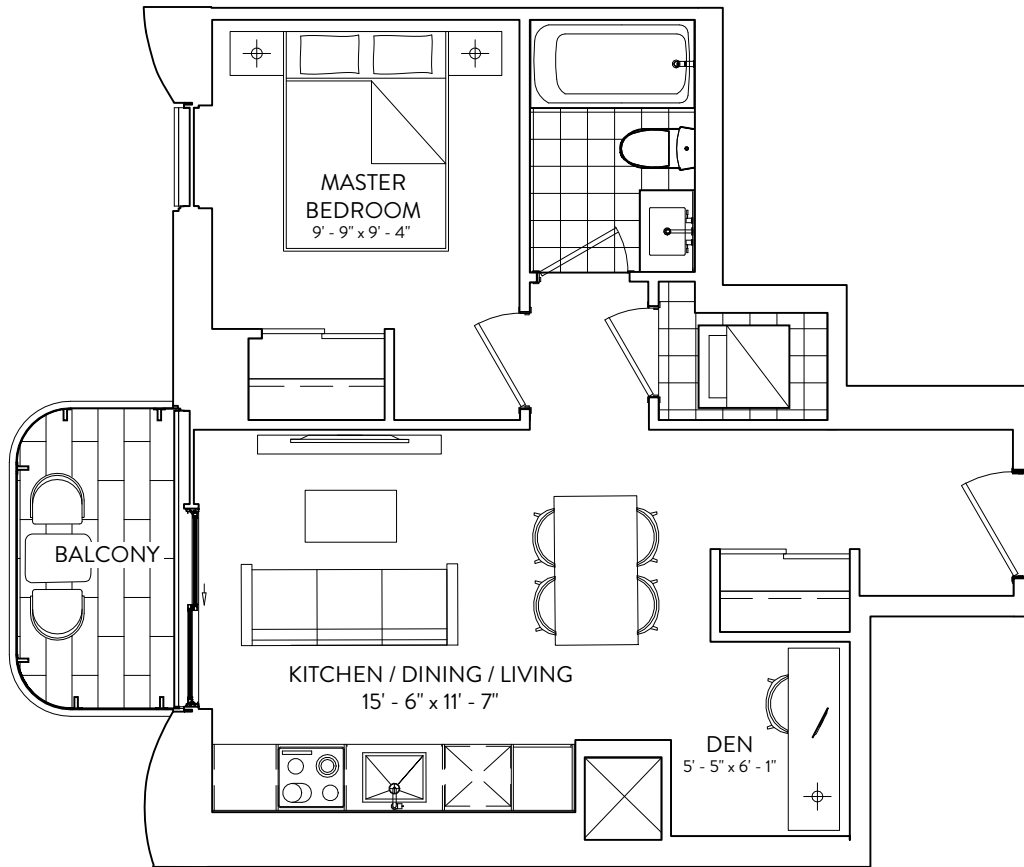


This plan is not to scale and is subject to architectural review and revision. The number of units per Floor and the number of floors may be reduced or increased at the vendor's sole discretion without notice. The purchaser acknowledges that the actual unit purchased may be a reverse layout to the plan shown. All materials, specifications, details and dimensions, if any, are approximate and subject to change without notice in order to comply with building site conditions and municipal, structural, vendor and/or architectural requirements. Actual living areas may vary from floor area stated. Floor areas have been measured and may vary in accordance with Bulletin #22 published by the Tarion Warranty Corporation. Bulkheads are not shown on this plan and may be located in areas of the Unit as required to provide venting and mechanical systems. Balconies, Terraces and Patios, if any, are exclusive use common elements shown for display purposes only and location and size are subject to change without notice. Window location, size and type may vary without notice. The length, width and directional position of the flooring are for illustration purposes only and may vary without notice. E.&O.E.

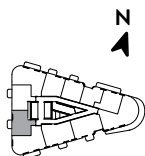
1B+D 544

1 BEDROOM + DEN | 1 BATHROOM
INTERIOR: 544 SF | EXTERIOR: 43 SF

GALLERIA



FLOORS 12-31



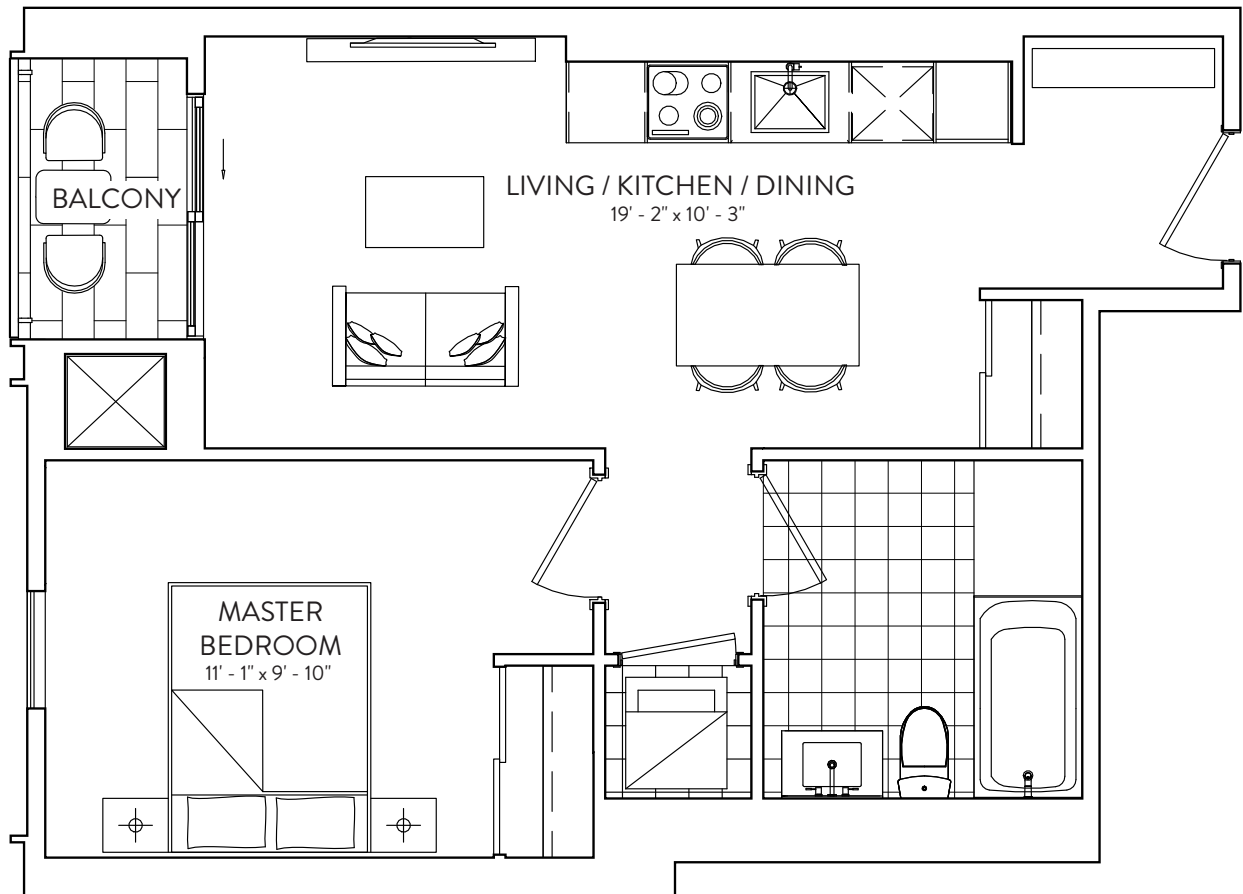
This plan is not to scale and is subject to architectural review and revision. The number of units per Floor and the number of floors may be reduced or increased at the vendor's sole discretion without notice. The purchaser acknowledges that the actual unit purchased may be a reverse layout to the plan shown. All materials, specifications, details and dimensions, if any, are approximate and subject to change without notice in order to comply with building site conditions and municipal, structural, vendor and/or architectural requirements. Actual living areas may vary from floor area stated. Floor areas have been measured and may vary in accordance with Bulletin #22 published by the Tarion Warranty Corporation. Bulkheads are not shown on this plan and may be located in areas of the Unit as required to provide venting and mechanical systems. Balconies, Terraces and Patios, if any, are exclusive use common elements shown for display purposes only and location and size are subject to change without notice. Window location, size and type may vary without notice. The length, width and directional position of the flooring are for illustration purposes only and may vary without notice. E.&O.E.

ELADCANADA

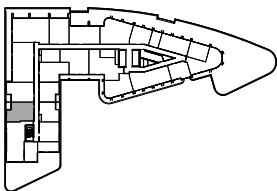
1B 555

1 BEDROOM | 1 BATHROOM

INTERIOR: 555 SF | EXTERIOR: 43 SF



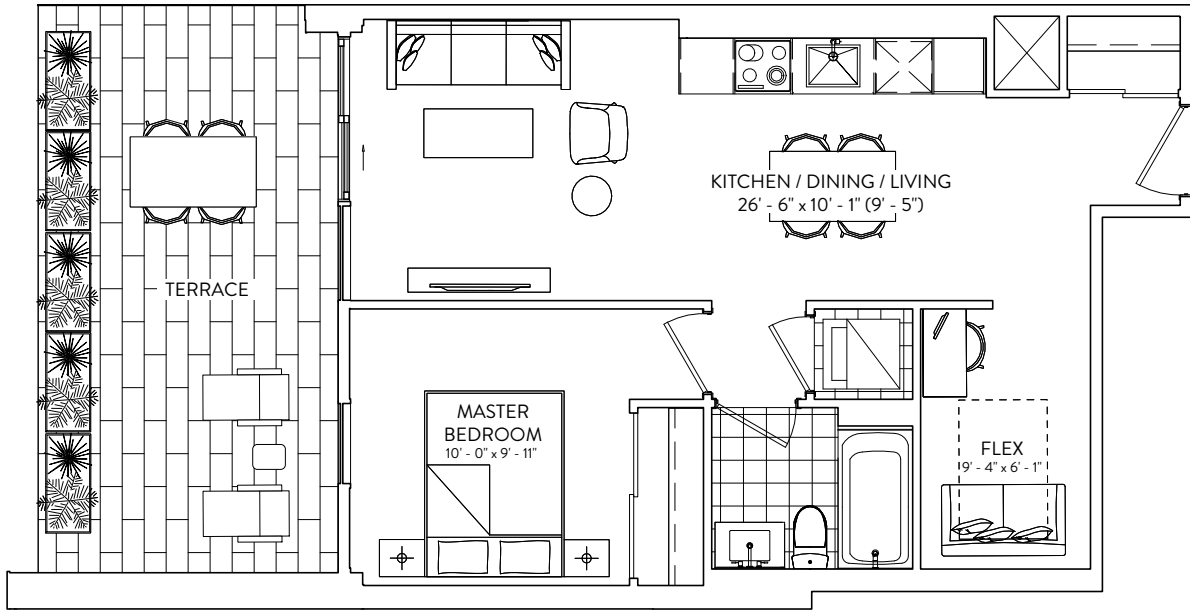
FLOORS 8-9



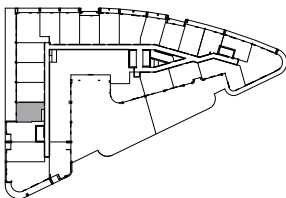
This plan is not to scale and is subject to architectural review and revision. The number of units per Floor and the number of floors may be reduced or increased at the vendor's sole discretion without notice. The purchaser acknowledges that the actual unit purchased may be a reverse layout to the plan shown. All materials, specifications, details and dimensions, if any, are approximate and subject to change without notice in order to comply with building site conditions and municipal, structural, vendor and/or architectural requirements. Actual living areas may vary from floor area stated. Floor areas have been measured and may vary in accordance with Bulletin #22 published by the Tarion Warranty Corporation. Bulkheads are not shown on this plan and may be located in areas of the Unit as required to provide venting and mechanical systems. Balconies, Terraces and Patios, if any, are exclusive use common elements shown for display purposes only and location and size are subject to change without notice. Window location, size and type may vary without notice. The length, width and directional position of the flooring are for illustration purposes only and may vary without notice. E.&O.E.

1B+F 606

INTERIOR: 606 SF | EXTERIOR: 215 SF | 1 BEDROOM + FLEX | 1 BATHROOM



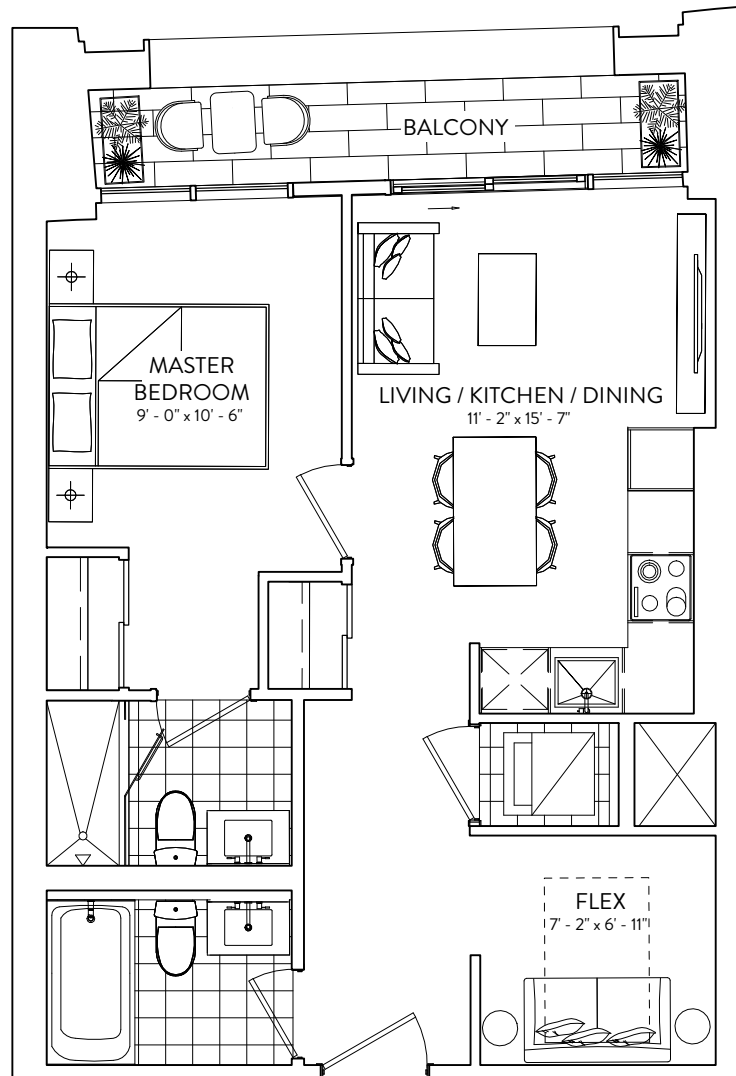
FLOOR 3



This plan is not to scale and is subject to architectural review and revision. The number of units per level and the number of floors may be reduced or increased at the vendor's sole discretion without notice. The purchaser acknowledges that the actual unit purchased may be a reverse layout to the plan shown. All materials, specifications, details and dimensions, if any, are approximate and subject to change without notice in order to comply with building site conditions and municipal, structural, vendor and/or architectural requirements. Actual living areas may vary from floor area stated. Floor areas have been measured and may vary in accordance with Bulletin #22 published by the Tarion Warranty Corporation. Bulkheads are not shown on this plan and may be located in areas of the Unit as required to provide venting and mechanical systems. Balconies, Terraces and Patios, if any, are exclusive use common elements shown for display purposes only and location and size are subject to change without notice. Window location, size and type may vary without notice. The length, width and directional position of the flooring are for illustration purposes only and may vary without notice. E.&O.E.

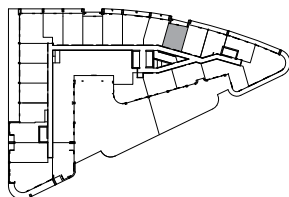
1B+F 607

1 BEDROOM + FLEX | 2 BATHROOM
INTERIOR: 607 SF | EXTERIOR: 50 SF



BALCONY
FLOORS 4-7 | EXTERIOR: 65 SF
FLOOR 3 | EXTERIOR: 50 SF

FLOORS 3-7

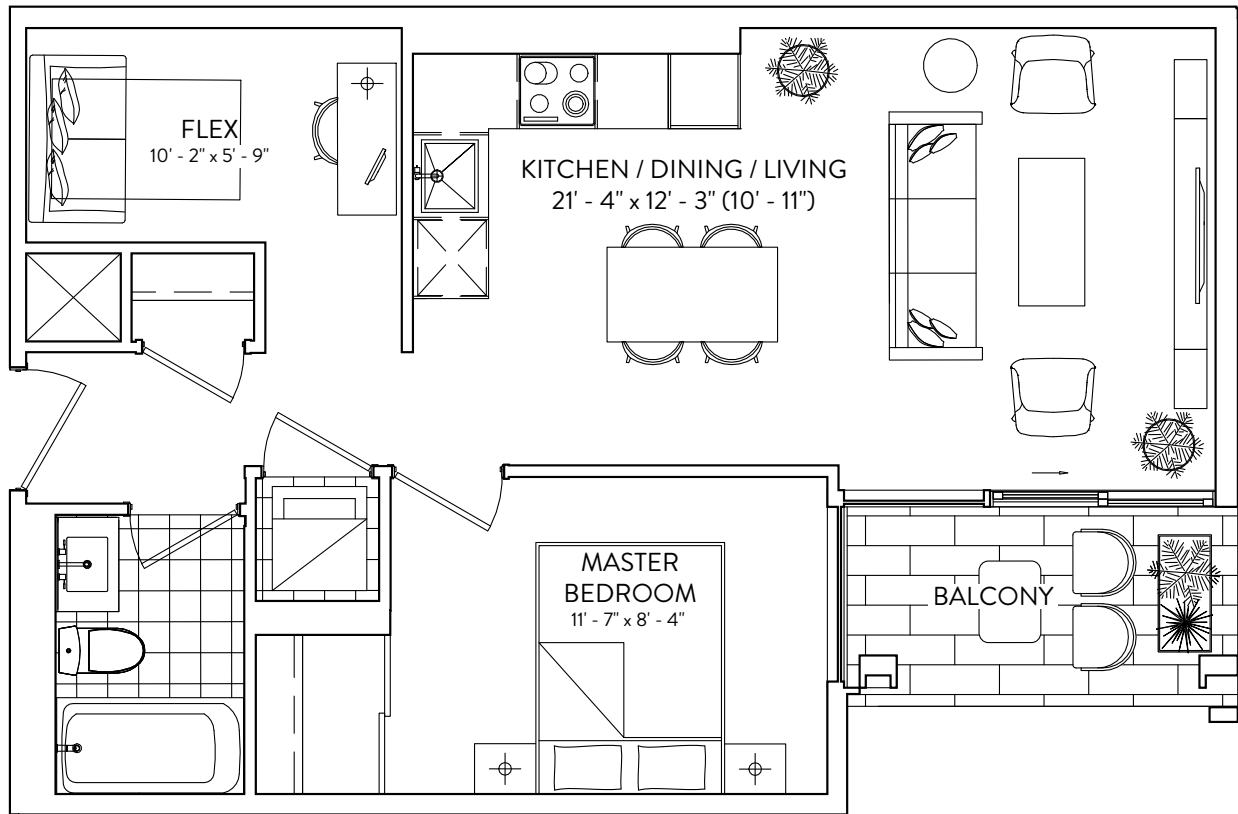


This plan is not to scale and is subject to architectural review and revision. The number of units per Floor and the number of floors may be reduced or increased at the vendor's sole discretion without notice. The purchaser acknowledges that the actual unit purchased may be a reverse layout to the plan shown. All materials, specifications, details and dimensions, if any, are approximate and subject to change without notice in order to comply with building site conditions and municipal, structural, vendor and/or architectural requirements. Actual living areas may vary from floor area stated. Floor areas have been measured and may vary in accordance with Bulletin #22 published by the Tarion Warranty Corporation. Bulkheads are not shown on this plan and may be located in areas of the Unit as required to provide venting and mechanical systems. Balconies, Terraces and Patios, if any, are exclusive use common elements shown for display purposes only and location and size are subject to change without notice. Window location, size and type may vary without notice. The length, width and directional position of the flooring are for illustration purposes only and may vary without notice. E.&O.E.

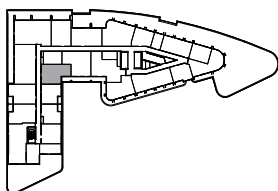
1B+F 619

1 BEDROOM + FLEX | 1 BATHROOM
INTERIOR: 619 SF | EXTERIOR: 43 SF

GALLERIA



FLOORS 8-10

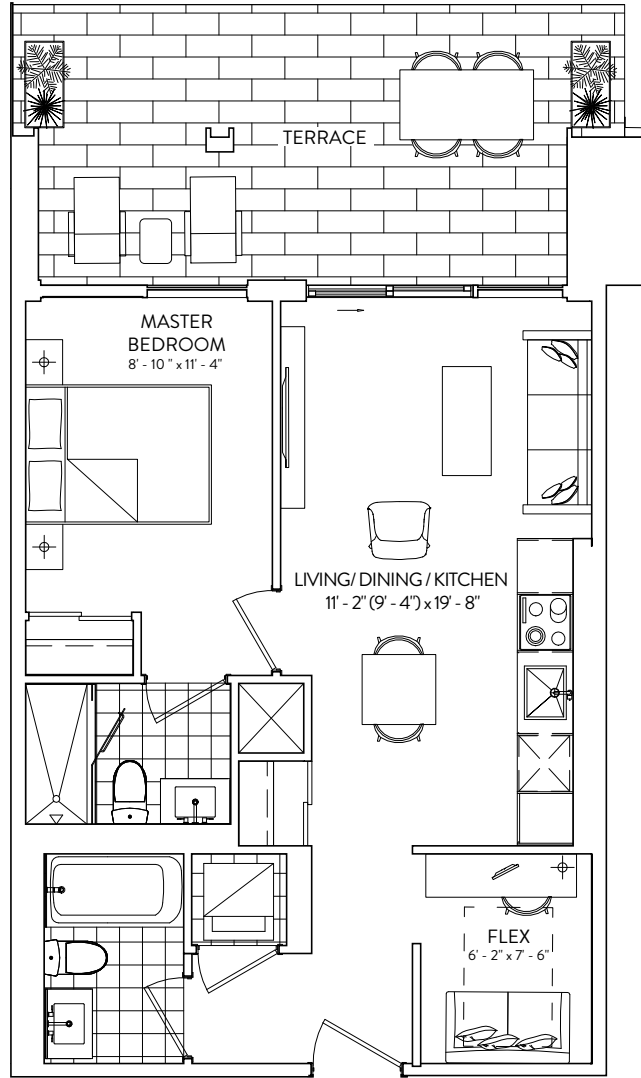


This plan is not to scale and is subject to architectural review and revision. The number of units per Floor and the number of floors may be reduced or increased at the vendor's sole discretion without notice. The purchaser acknowledges that the actual unit purchased may be a reverse layout to the plan shown. All materials, specifications, details and dimensions, if any, are approximate and subject to change without notice in order to comply with building site conditions and municipal, structural, vendor and/or architectural requirements. Actual living areas may vary from floor area stated. Floor areas have been measured and may vary in accordance with Bulletin #22 published by the Tarion Warranty Corporation. Bulkheads are not shown on this plan and may be located in areas of the Unit as required to provide venting and mechanical systems. Balconies, Terraces and Patios, if any, are exclusive use common elements shown for display purposes only and location and size are subject to change without notice. Window location, size and type may vary without notice. The length, width and directional position of the flooring are for illustration purposes only and may vary without notice. E.&O.E.

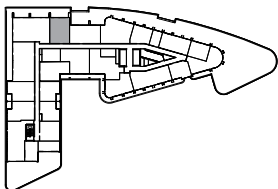
ELADCANADA

1B+F 637

INTERIOR: 637 SF | EXTERIOR: 194 SF | 1 BEDROOM + FLEX | 2 BATHROOM



FLOOR 8

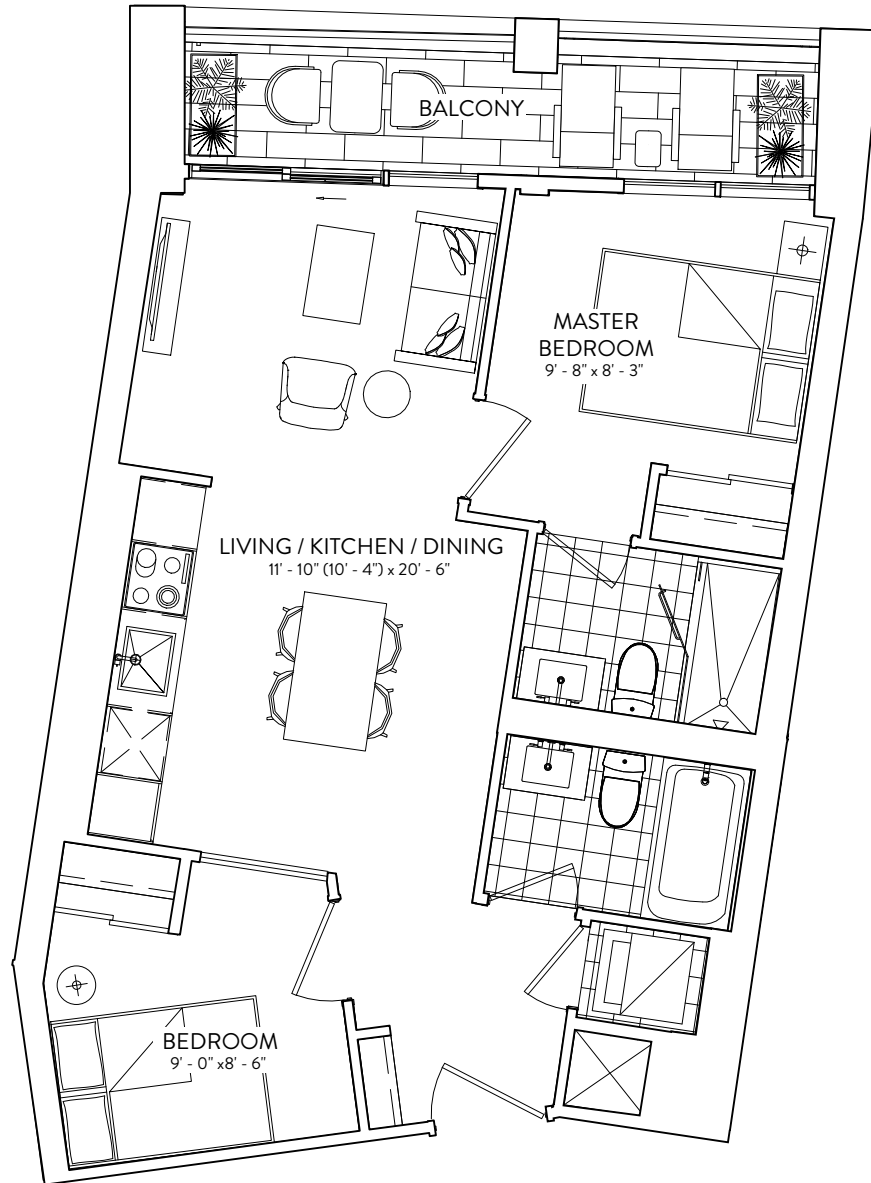


This plan is not to scale and is subject to architectural review and revision. The number of units per level and the number of floors may be reduced or increased at the vendor's sole discretion without notice. The purchaser acknowledges that the actual unit purchased may be a reverse layout to the plan shown. All materials, specifications, details and dimensions, if any, are approximate and subject to change without notice in order to comply with building site conditions and municipal, structural, vendor and/or architectural requirements. Actual living areas may vary from floor area stated. Floor areas have been measured and may vary in accordance with Bulletin #22 published by the Tarion Warranty Corporation. Bulkheads are not shown on this plan and may be located in areas of the Unit as required to provide venting and mechanical systems. Balconies, Terraces and Patios, if any, are exclusive use common elements shown for display purposes only and location and size are subject to change without notice. Window location, size and type may vary without notice. The length, width and directional position of the flooring are for illustration purposes only and may vary without notice. E.&O.E.

2B 643

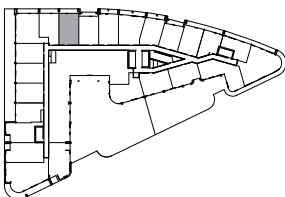
2 BEDROOM | 2 BATHROOM

INTERIOR: 643 SF | EXTERIOR: 70 SF



BALCONY
FLOORS 4-7 | EXTERIOR: 65 SF

FLOORS 3-7



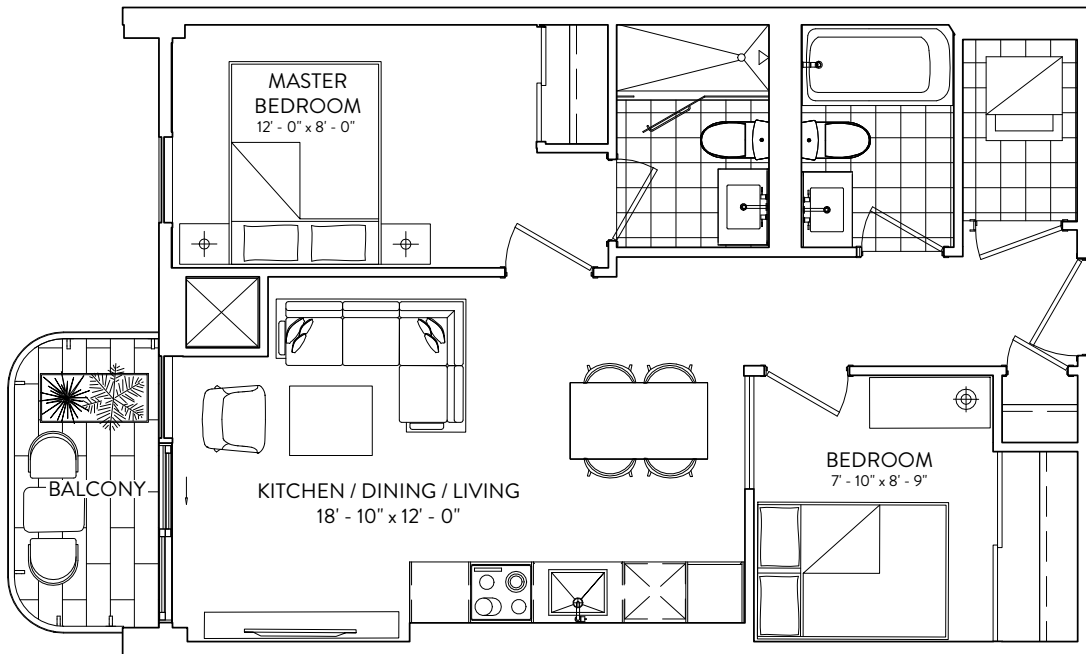
This plan is not to scale and is subject to architectural review and revision. The number of units per Floor and the number of floors may be reduced or increased at the vendor's sole discretion without notice. The purchaser acknowledges that the actual unit purchased may be a reverse layout to the plan shown. All materials, specifications, details and dimensions, if any, are approximate and subject to change without notice in order to comply with building site conditions and municipal, structural, vendor and/or architectural requirements. Actual living areas may vary from floor area stated. Floor areas have been measured and may vary in accordance with Bulletin #22 published by the Tarion Warranty Corporation. Bulkheads are not shown on this plan and may be located in areas of the Unit as required to provide venting and mechanical systems. Balconies, Terraces and Patios, if any, are exclusive use common elements shown for display purposes only and location and size are subject to change without notice. Window location, size and type may vary without notice. The length, width and directional position of the flooring are for illustration purposes only and may vary without notice. E.&O.E.

2B 655

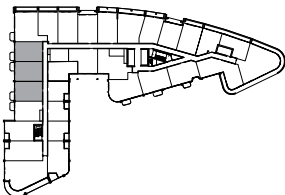
2 BEDROOM | 2 BATHROOM

INTERIOR: 655 SF | EXTERIOR: 41 SF

GALLERIA



FLOORS 4 -7



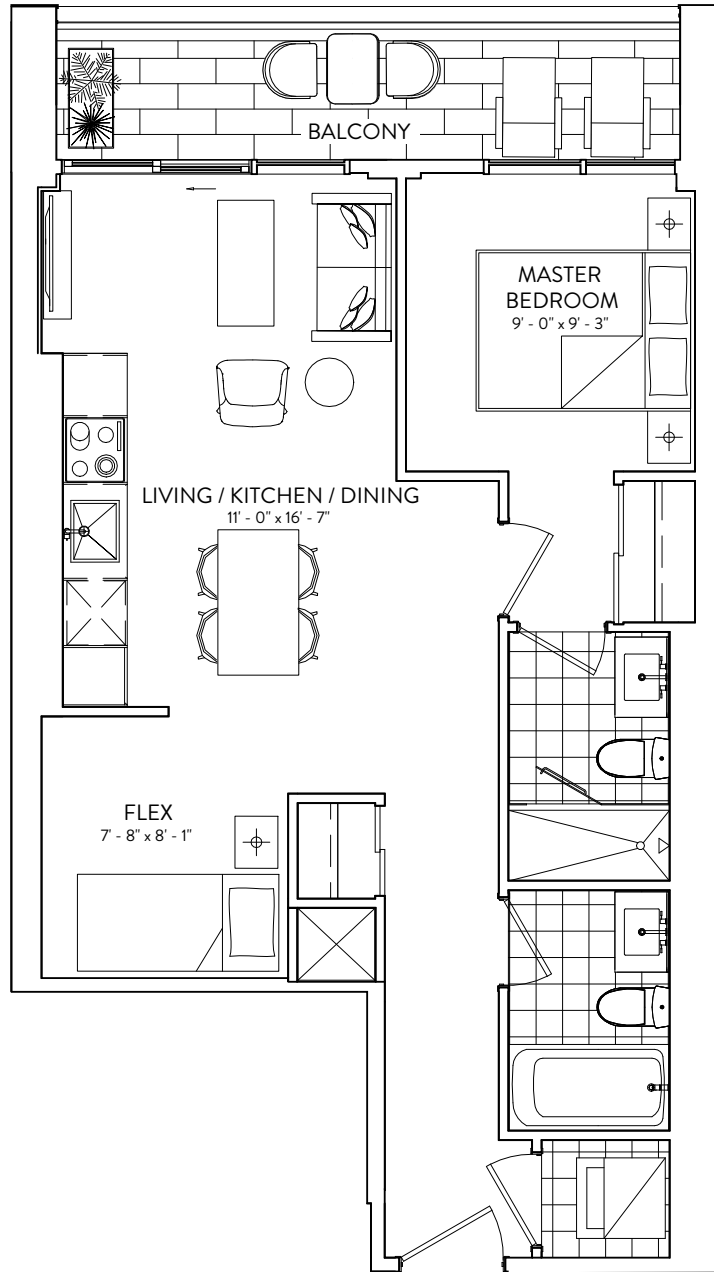
This plan is not to scale and is subject to architectural review and revision. The number of units per Floor and the number of floors may be reduced or increased at the vendor's sole discretion without notice. The purchaser acknowledges that the actual unit purchased may be a reverse layout to the plan shown. All materials, specifications, details and dimensions, if any, are approximate and subject to change without notice in order to comply with building site conditions and municipal, structural, vendor and/or architectural requirements. Actual living areas may vary from floor area stated. Floor areas have been measured and may vary in accordance with Bulletin #22 published by the Tarion Warranty Corporation. Bulkheads are not shown on this plan and may be located in areas of the Unit as required to provide venting and mechanical systems. Balconies, Terraces and Patios, if any, are exclusive use common elements shown for display purposes only and location and size are subject to change without notice. Window location, size and type may vary without notice. The length, width and directional position of the flooring are for illustration purposes only and may vary without notice. E.&O.E.

ELADCANADA

1B+F 657

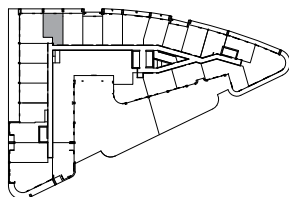
1 BEDROOM + FLEX | 2 BATHROOM
INTERIOR: 657 SF | EXTERIOR: 65 SF

GALLERIA



BALCONY
FLOORS 4-7 | EXTERIOR: 75 SF

FLOORS 3-7




This plan is not to scale and is subject to architectural review and revision. The number of units per Floor and the number of floors may be reduced or increased at the vendor's sole discretion without notice. The purchaser acknowledges that the actual unit purchased may be a reverse layout to the plan shown. All materials, specifications, details and dimensions, if any, are approximate and subject to change without notice in order to comply with building site conditions and municipal, structural, vendor and/or architectural requirements. Actual living areas may vary from floor area stated. Floor areas have been measured and may vary in accordance with Bulletin #22 published by the Tarion Warranty Corporation. Bulkheads are not shown on this plan and may be located in areas of the Unit as required to provide venting and mechanical systems. Balconies, Terraces and Patios, if any, are exclusive use common elements shown for display purposes only and location and size are subject to change without notice. Window location, size and type may vary without notice. The length, width and directional position of the flooring are for illustration purposes only and may vary without notice. E.&O.E.

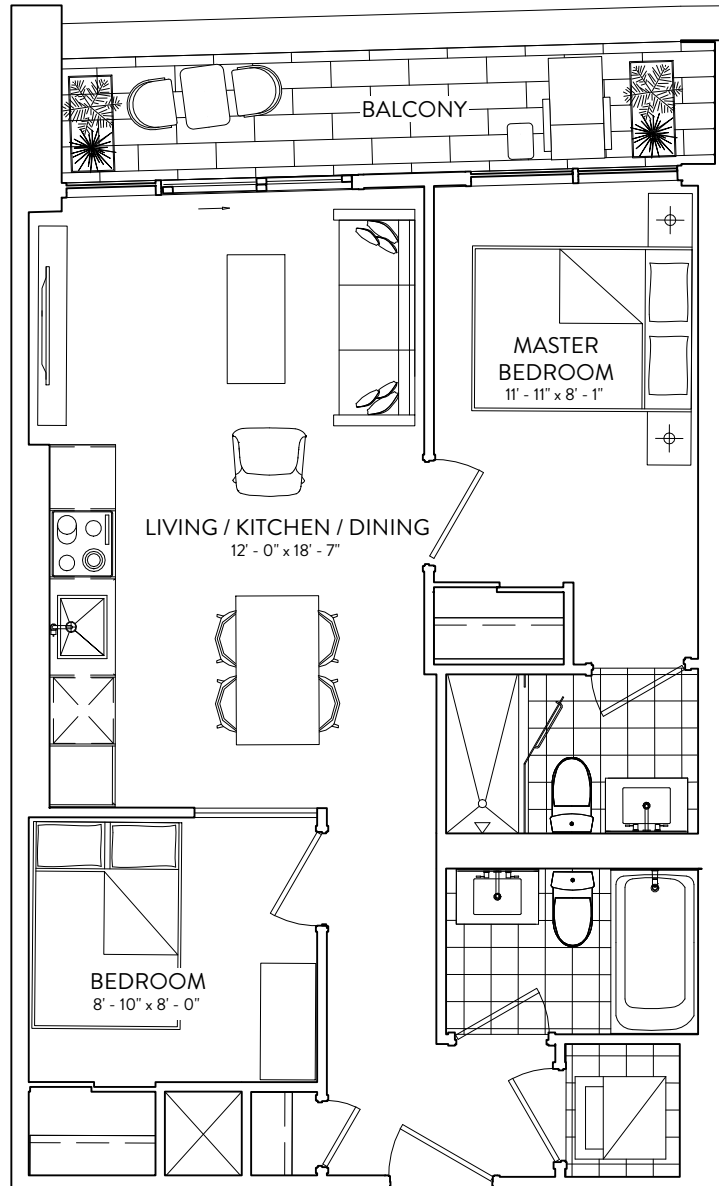
ELADCANADA

2B 669

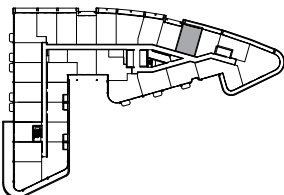
2 BEDROOM | 2 BATHROOM

INTERIOR: 669 SF | EXTERIOR: 74 SF

GALLERIA 



FLOORS 3-7



This plan is not to scale and is subject to architectural review and revision. The number of units per Floor and the number of floors may be reduced or increased at the vendor's sole discretion without notice. The purchaser acknowledges that the actual unit purchased may be a reverse layout to the plan shown. All materials, specifications, details and dimensions, if any, are approximate and subject to change without notice in order to comply with building site conditions and municipal, structural, vendor and/or architectural requirements. Actual living areas may vary from floor area stated. Floor areas have been measured and may vary in accordance with Bulletin #22 published by the Tarion Warranty Corporation. Bulkheads are not shown on this plan and may be located in areas of the Unit as required to provide venting and mechanical systems. Balconies, Terraces and Patios, if any, are exclusive use common elements shown for display purposes only and location and size are subject to change without notice. Window location, size and type may vary without notice. The length, width and directional position of the flooring are for illustration purposes only and may vary without notice. E.&O.E.

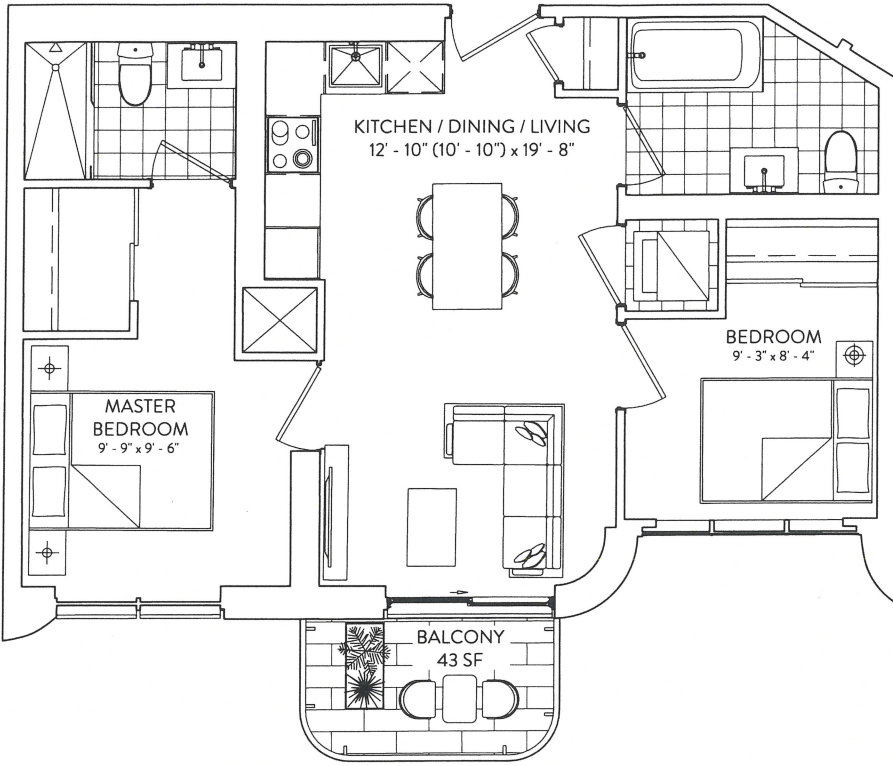
ELADCANADA

2B 670

2 BEDROOM | 2 BATHROOM

INTERIOR: 670 SF | EXTERIOR 43 SF

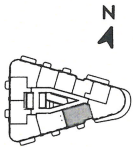
GALLERIA 



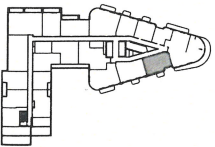
BALCONY
FLOORS 9, 10, 12-14, 16-18, 20-22,
24-26, 28, 29 | EXTERIOR: 43 SF

FLOORS 11, 15, 19, 23,
27, 30 | EXTERIOR: 140 SF

FLOORS 11-31



FLOORS 9-10



This plan is not to scale and is subject to architectural review and revision. The number of units per Floor and the number of floors may be reduced or increased at the vendor's sole discretion without notice. The purchaser acknowledges that the actual unit purchased may be a reverse layout to the plan shown. All materials, specifications, details and dimensions, if any, are approximate and subject to change without notice in order to comply with building site conditions and municipal, structural, vendor and/or architectural requirements. Actual living areas may vary from floor areas stated. Floor areas have been measured and may vary in accordance with Bulletin #22 published by the Tarion Warranty Corporation. Bulkheads are not shown on this plan and may be located in areas of the Unit as required to provide venting and mechanical systems. Balconies, Terraces and Patios, if any, are exclusive use common elements shown for display purposes only and location and size are subject to change without notice. Window location, size and type may vary without notice. The length, width and directional position of the flooring are for illustration purposes only and may vary without notice. E.&O.E.

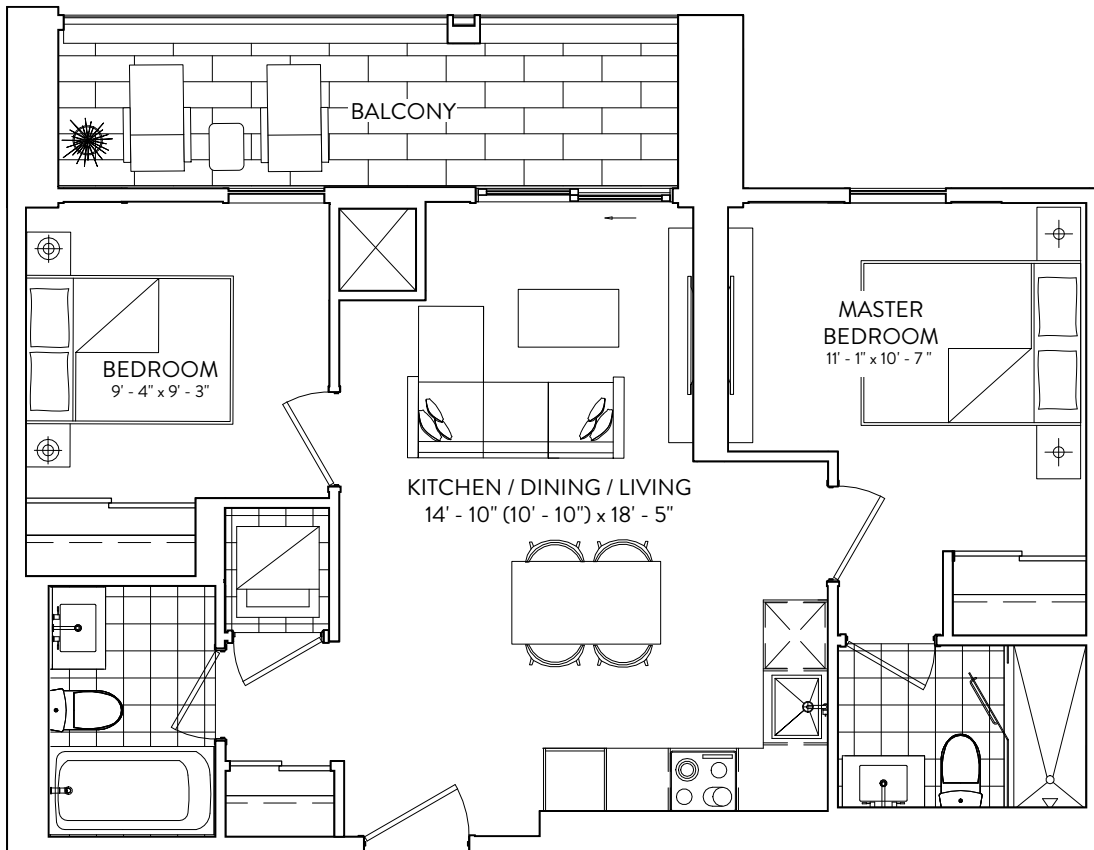
ELADCANADA

2B 674

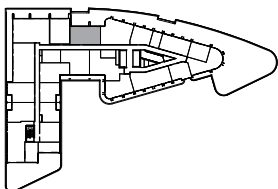
2 BEDROOM | 2 BATHROOM

INTERIOR: 674 SF | EXTERIOR: 88 SF

GALLERIA



FLOORS 9-10

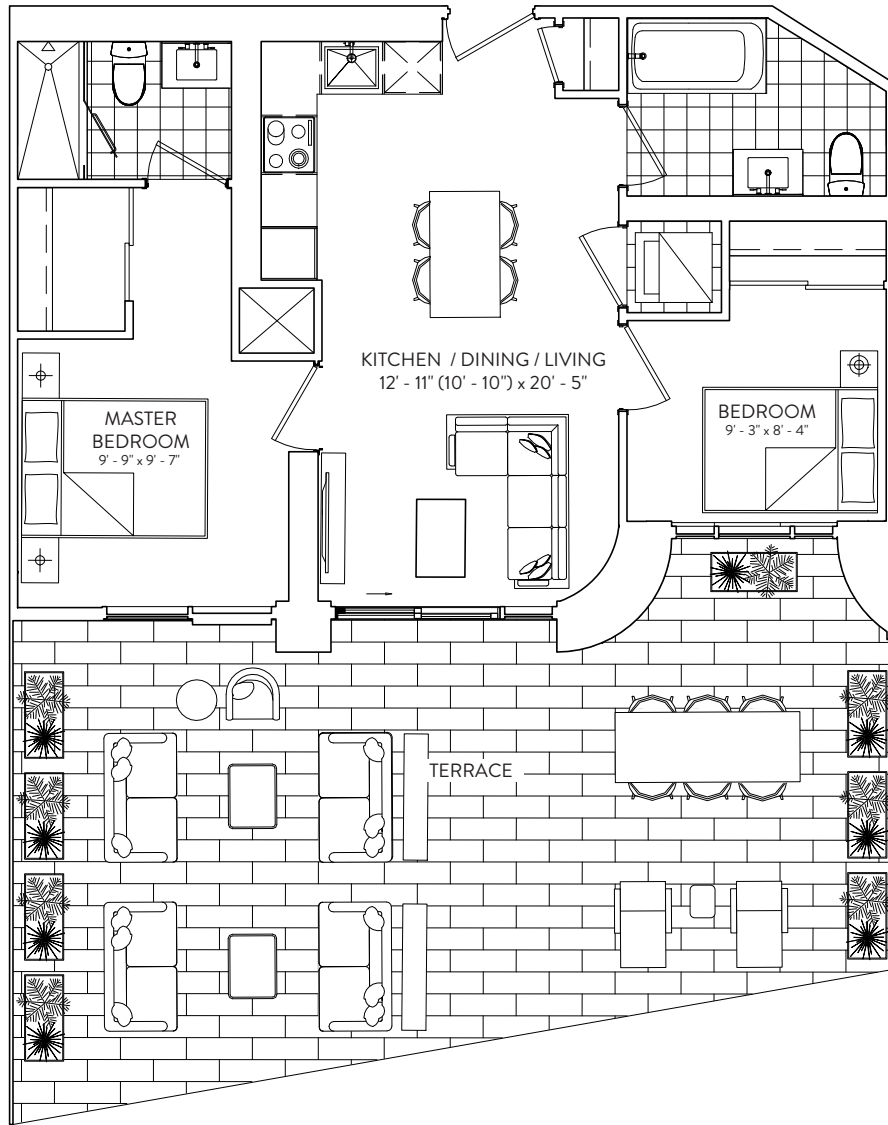


This plan is not to scale and is subject to architectural review and revision. The number of units per Floor and the number of floors may be reduced or increased at the vendor's sole discretion without notice. The purchaser acknowledges that the actual unit purchased may be a reverse layout to the plan shown. All materials, specifications, details and dimensions, if any, are approximate and subject to change without notice in order to comply with building site conditions and municipal, structural, vendor and/or architectural requirements. Actual living areas may vary from floor area stated. Floor areas have been measured and may vary in accordance with Bulletin #22 published by the Tarion Warranty Corporation. Bulkheads are not shown on this plan and may be located in areas of the Unit as required to provide venting and mechanical systems. Balconies, Terraces and Patios, if any, are exclusive use common elements shown for display purposes only and location and size are subject to change without notice. Window location, size and type may vary without notice. The length, width and directional position of the flooring are for illustration purposes only and may vary without notice. E.&O.E.

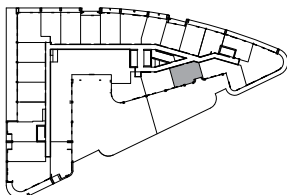
ELADCANADA

2B 682

INTERIOR: 682 SF | EXTERIOR: 517 SF 2 BEDROOM | 2 BATHROOM



FLOOR 3




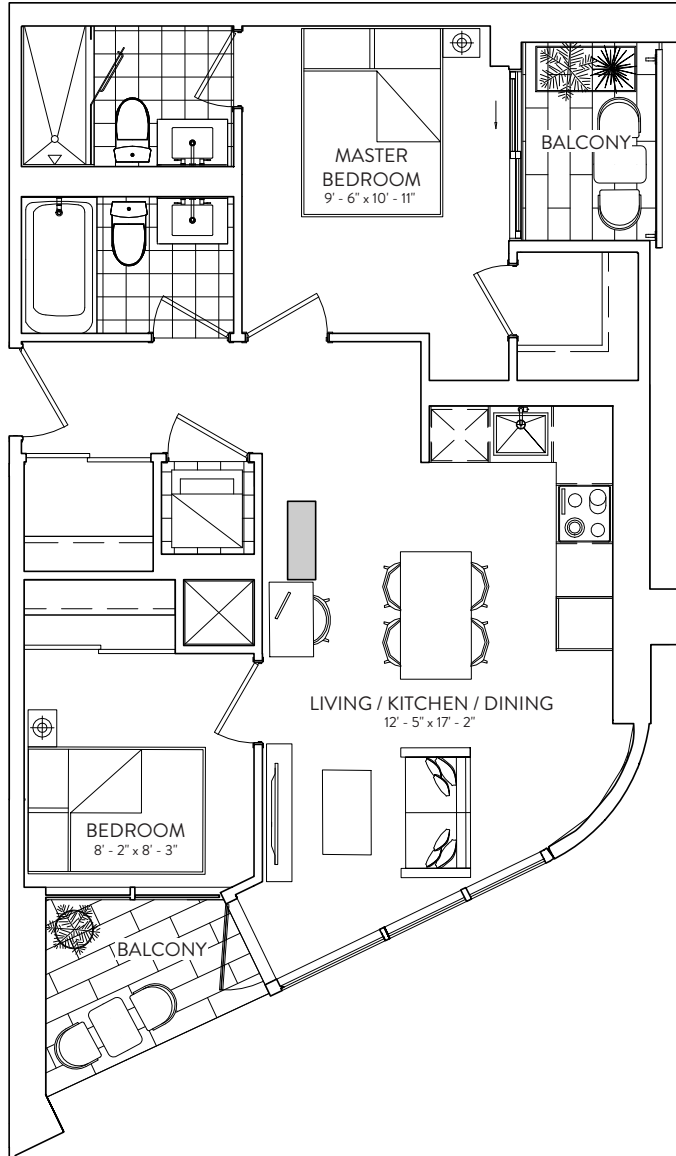
This plan is not to scale and is subject to architectural review and revision. The number of units per level and the number of floors may be reduced or increased at the vendor's sole discretion without notice. The purchaser acknowledges that the actual unit purchased may be a reverse layout to the plan shown. All materials, specifications, details and dimensions, if any, are approximate and subject to change without notice in order to comply with building site conditions and municipal, structural, vendor and/or architectural requirements. Actual living areas may vary from floor area stated. Floor areas have been measured and may vary in accordance with Bulletin #22 published by the Tarion Warranty Corporation. Bulkheads are not shown on this plan and may be located in areas of the Unit as required to provide venting and mechanical systems. Balconies, Terraces and Patios, if any, are exclusive use common elements shown for display purposes only and location and size are subject to change without notice. Window location, size and type may vary without notice. The length, width and directional position of the flooring are for illustration purposes only and may vary without notice. E.&O.E.

2B 693

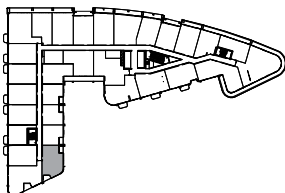
2 BEDROOM | 2 BATHROOM

INTERIOR: 693 SF | EXTERIOR: 70 SF

GALLERIA 



FLOORS 6-7

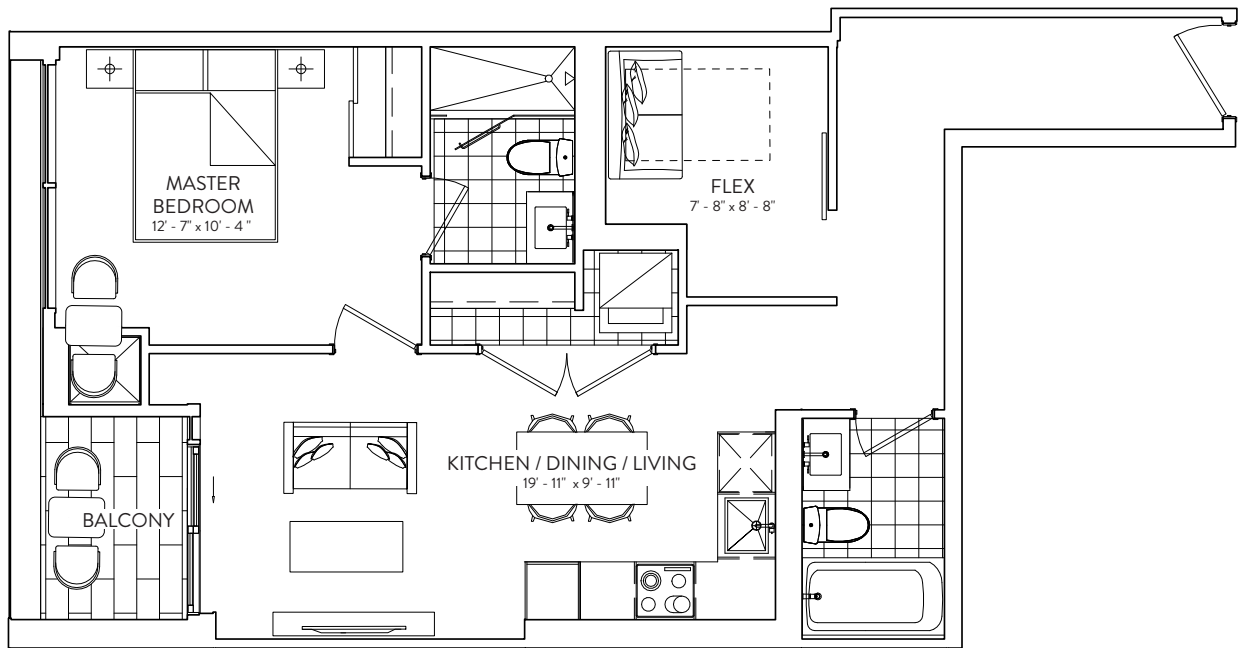


This plan is not to scale and is subject to architectural review and revision. The number of units per Floor and the number of floors may be reduced or increased at the vendor's sole discretion without notice. The purchaser acknowledges that the actual unit purchased may be a reverse layout to the plan shown. All materials, specifications, details and dimensions, if any, are approximate and subject to change without notice in order to comply with building site conditions and municipal, structural, vendor and/or architectural requirements. Actual living areas may vary from floor area stated. Floor areas have been measured and may vary in accordance with Bulletin #22 published by the Tarion Warranty Corporation. Bulkheads are not shown on this plan and may be located in areas of the Unit as required to provide venting and mechanical systems. Balconies, Terraces and Patios, if any, are exclusive use common elements shown for display purposes only and location and size are subject to change without notice. Window location, size and type may vary without notice. The length, width and directional position of the flooring are for illustration purposes only and may vary without notice. E.&O.E.

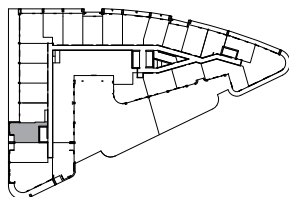
ELADCANADA

1B+F 721

1 BEDROOM + FLEX | 1 BATHROOM
INTERIOR: 721 SF | EXTERIOR: 35 SF



FLOORS 3-4

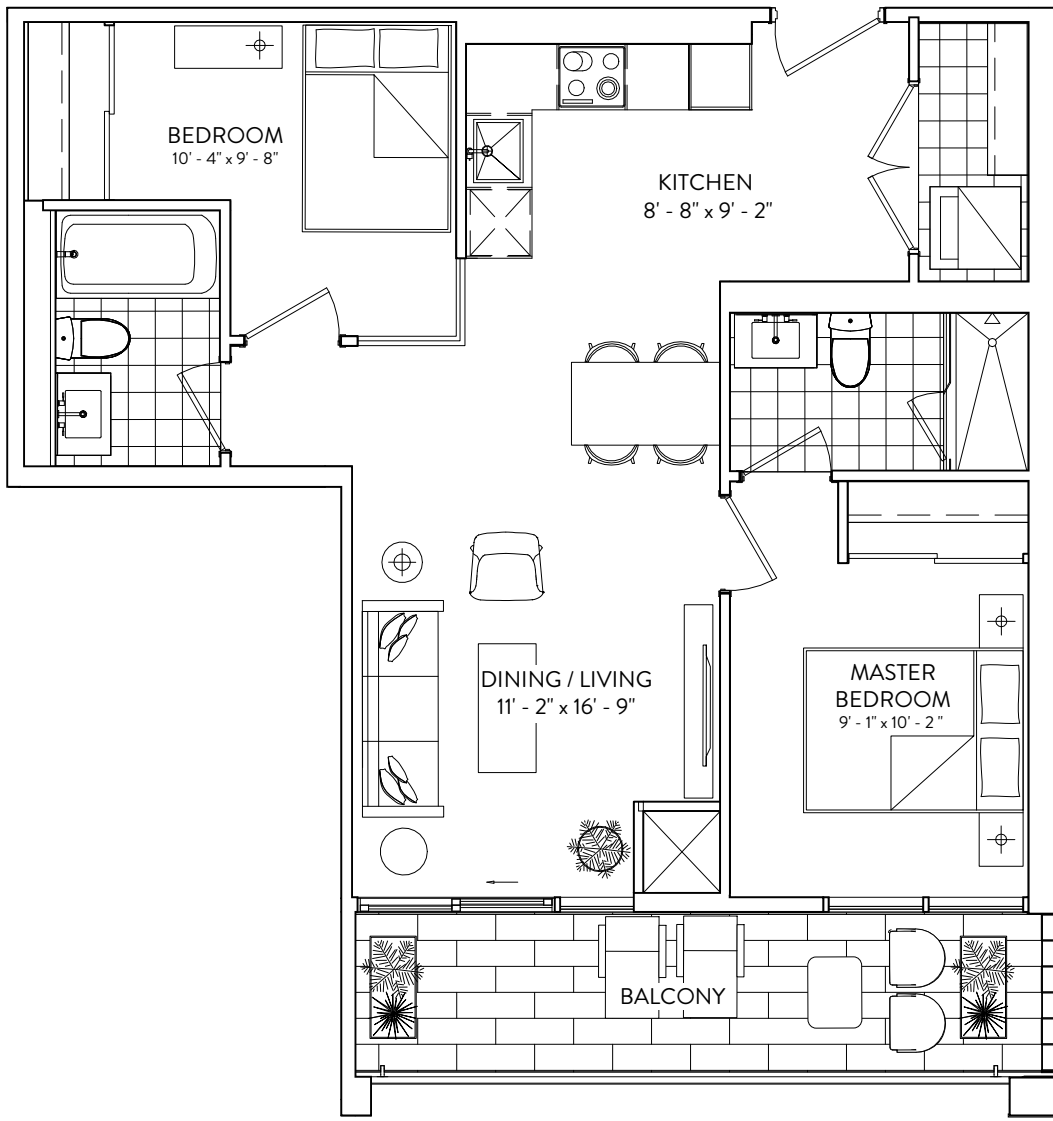


This plan is not to scale and is subject to architectural review and revision. The number of units per Floor and the number of floors may be reduced or increased at the vendor's sole discretion without notice. The purchaser acknowledges that the actual unit purchased may be a reverse layout to the plan shown. All materials, specifications, details and dimensions, if any, are approximate and subject to change without notice in order to comply with building site conditions and municipal, structural, vendor and/or architectural requirements. Actual living areas may vary from floor area stated. Floor areas have been measured and may vary in accordance with Bulletin #22 published by the Tarion Warranty Corporation. Bulkheads are not shown on this plan and may be located in areas of the Unit as required to provide venting and mechanical systems. Balconies, Terraces and Patios, if any, are exclusive use common elements shown for display purposes only and location and size are subject to change without notice. Window location, size and type may vary without notice. The length, width and directional position of the flooring are for illustration purposes only and may vary without notice. E.&O.E.

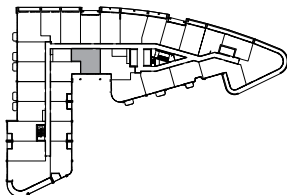
2B 732

2 BEDROOM | 2 BATHROOM

INTERIOR: 732 SF | EXTERIOR: 100 SF



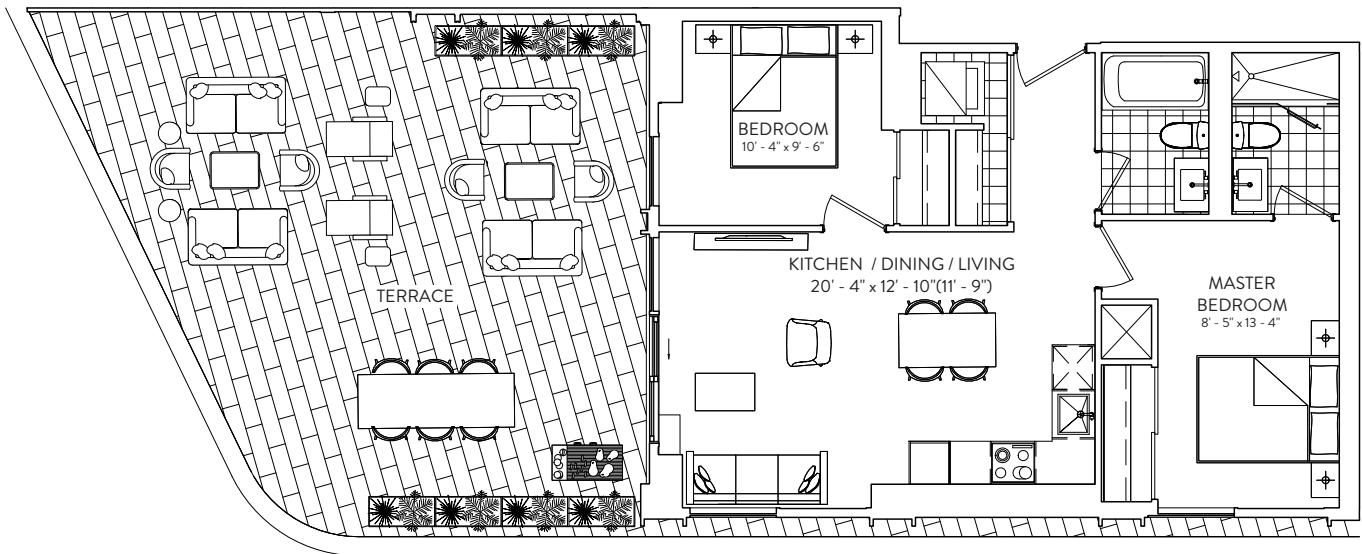
BALCONY
FLOOR 8 | EXTERIOR: 108 SF
FLOORS 9-10 | EXTERIOR: 86 SF
FLOORS 4-10



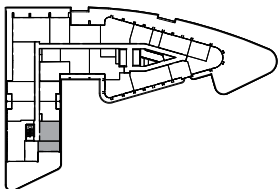
This plan is not to scale and is subject to architectural review and revision. The number of units per Floor and the number of floors may be reduced or increased at the vendor's sole discretion without notice. The purchaser acknowledges that the actual unit purchased may be a reverse layout to the plan shown. All materials, specifications, details and dimensions, if any, are approximate and subject to change without notice in order to comply with building site conditions and municipal, structural, vendor and/or architectural requirements. Actual living areas may vary from floor area stated. Floor areas have been measured and may vary in accordance with Bulletin #22 published by the Tarion Warranty Corporation. Bulkheads are not shown on this plan and may be located in areas of the Unit as required to provide venting and mechanical systems. Balconies, Terraces and Patios, if any, are exclusive use common elements shown for display purposes only and location and size are subject to change without notice. Window location, size and type may vary without notice. The length, width and directional position of the flooring are for illustration purposes only and may vary without notice. E.&O.E.

2B 739

INTERIOR: 739 SF | EXTERIOR: 537 SF | 2 BEDROOM | 2 BATHROOM



FLOOR 8



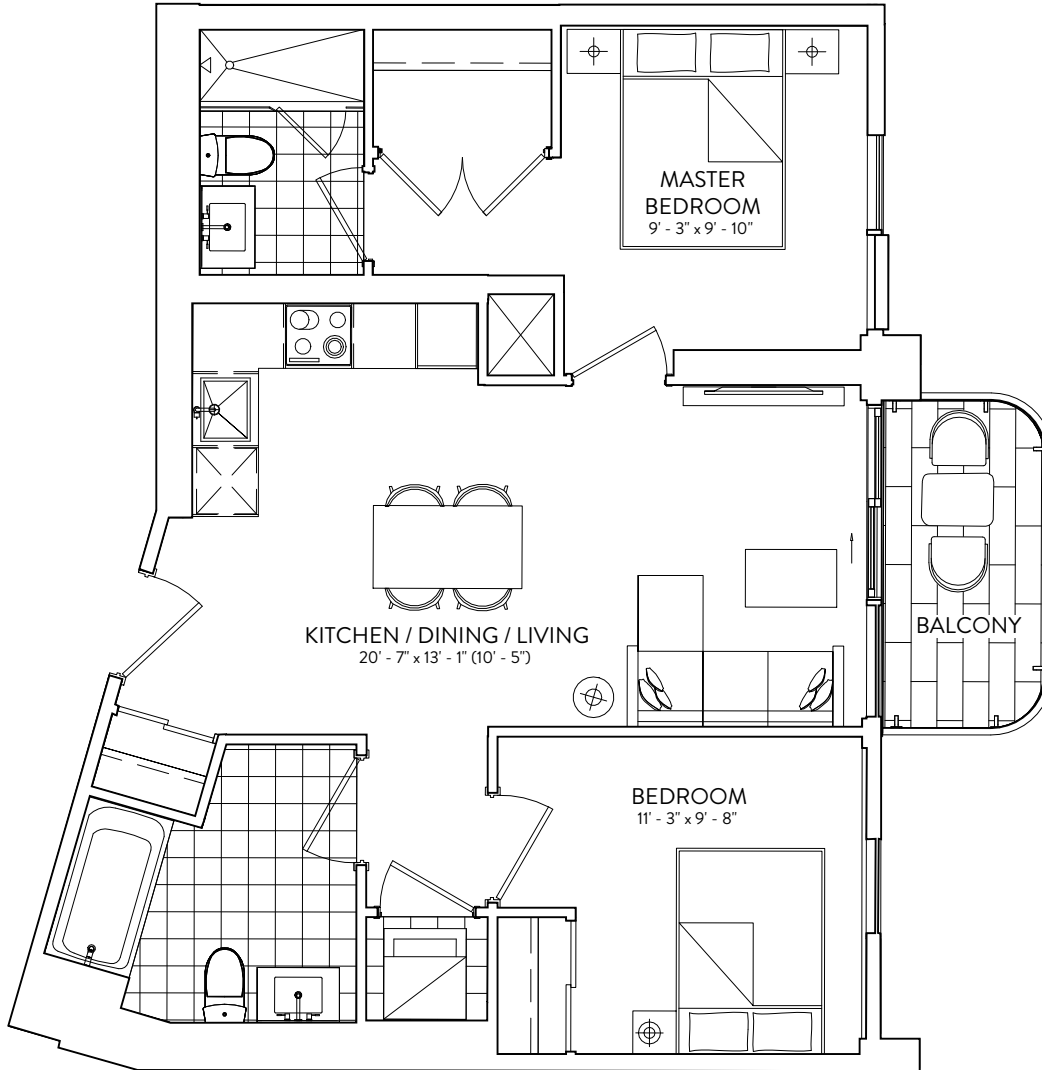
This plan is not to scale and is subject to architectural review and revision. The number of units per level and the number of floors may be reduced or increased at the vendor's sole discretion without notice. The purchaser acknowledges that the actual unit purchased may be a reverse layout to the plan shown. All materials, specifications, details and dimensions, if any, are approximate and subject to change without notice in order to comply with building site conditions and municipal, structural, vendor and/or architectural requirements. Actual living areas may vary from floor area stated. Floor areas have been measured and may vary in accordance with Bulletin #22 published by the Tarion Warranty Corporation. Bulkheads are not shown on this plan and may be located in areas of the Unit as required to provide venting and mechanical systems. Balconies, Terraces and Patios, if any, are exclusive use common elements shown for display purposes only and location and size are subject to change without notice. Window location, size and type may vary without notice. The length, width and directional position of the flooring are for illustration purposes only and may vary without notice. E.&O.E.

2B 746

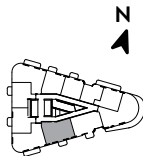
2 BEDROOM | 2 BATHROOM

INTERIOR: 746 SF | EXTERIOR: 43 SF

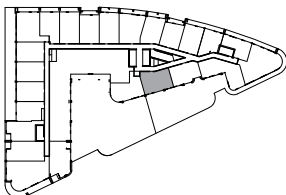
GALLERIA 



FLOORS 12-31



FLOORS 4-7, 9-11



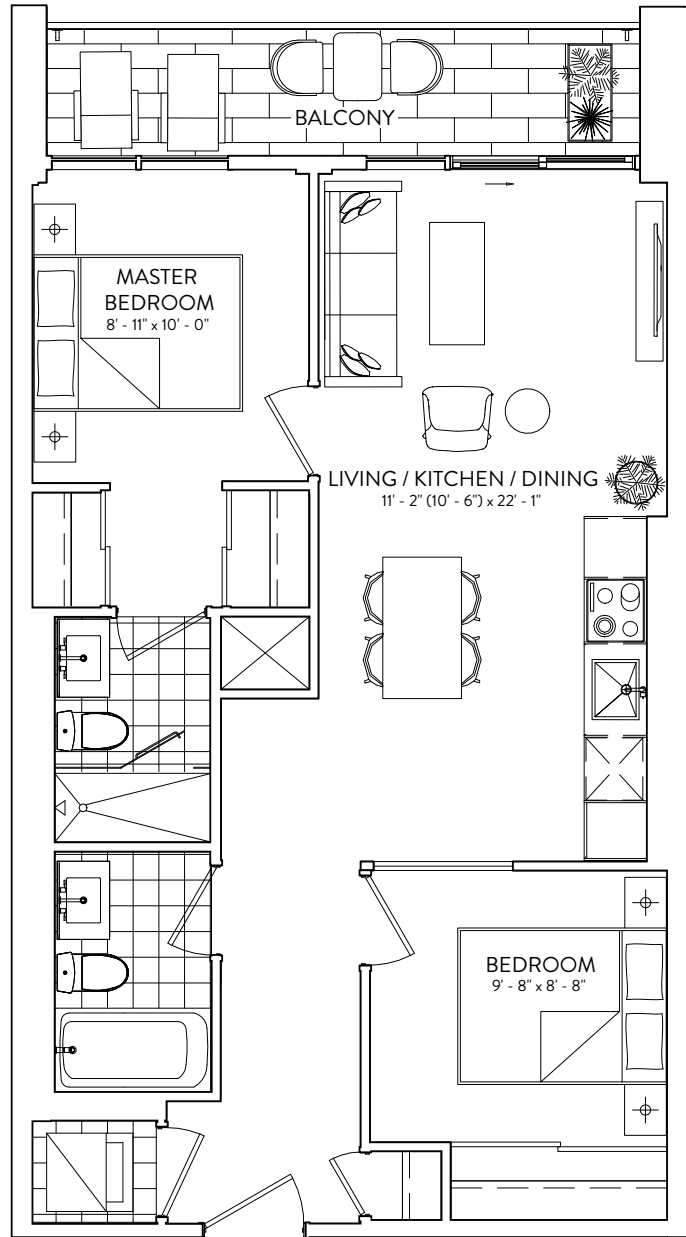
This plan is not to scale and is subject to architectural review and revision. The number of units per Floor and the number of floors may be reduced or increased at the vendor's sole discretion without notice. The purchaser acknowledges that the actual unit purchased may be a reverse layout to the plan shown. All materials, specifications, details and dimensions, if any, are approximate and subject to change without notice in order to comply with building site conditions and municipal, structural, vendor and/or architectural requirements. Actual living areas may vary from floor area stated. Floor areas have been measured and may vary in accordance with Bulletin #22 published by the Tarion Warranty Corporation. Bulkheads are not shown on this plan and may be located in areas of the Unit as required to provide venting and mechanical systems. Balconies, Terraces and Patios, if any, are exclusive use common elements shown for display purposes only and location and size are subject to change without notice. Window location, size and type may vary without notice. The length, width and directional position of the flooring are for illustration purposes only and may vary without notice. E.&O.E.

ELADCANADA


2B 747

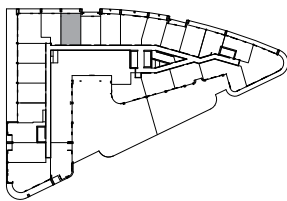
2 BEDROOM | 2 BATHROOM

INTERIOR: 747 SF | EXTERIOR: 75 SF



BALCONY
 FLOORS 4-7 | EXTERIOR: 70 SF
 FLOOR 3 | EXTERIOR: 75 SF

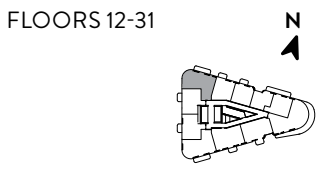
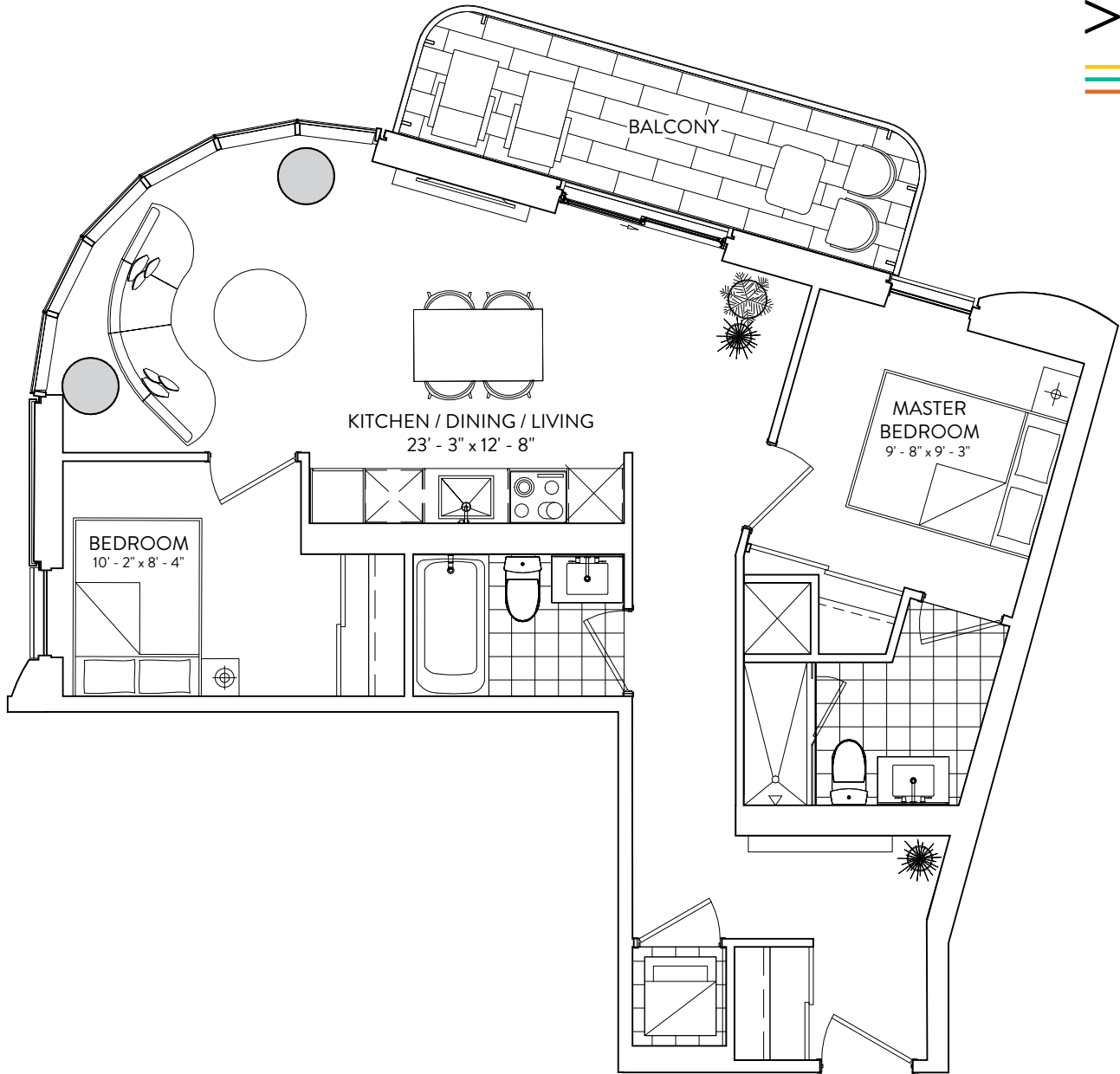
FLOORS 3-7 



This plan is not to scale and is subject to architectural review and revision. The number of units per Floor and the number of floors may be reduced or increased at the vendor's sole discretion without notice. The purchaser acknowledges that the actual unit purchased may be a reverse layout to the plan shown. All materials, specifications, details and dimensions, if any, are approximate and subject to change without notice in order to comply with building site conditions and municipal, structural, vendor and/or architectural requirements. Actual living areas may vary from floor area stated. Floor areas have been measured and may vary in accordance with Bulletin #22 published by the Tarion Warranty Corporation. Bulkheads are not shown on this plan and may be located in areas of the Unit as required to provide venting and mechanical systems. Balconies, Terraces and Patios, if any, are exclusive use common elements shown for display purposes only and location and size are subject to change without notice. Window location, size and type may vary without notice. The length, width and directional position of the flooring are for illustration purposes only and may vary without notice. E.&O.E.

2B 786

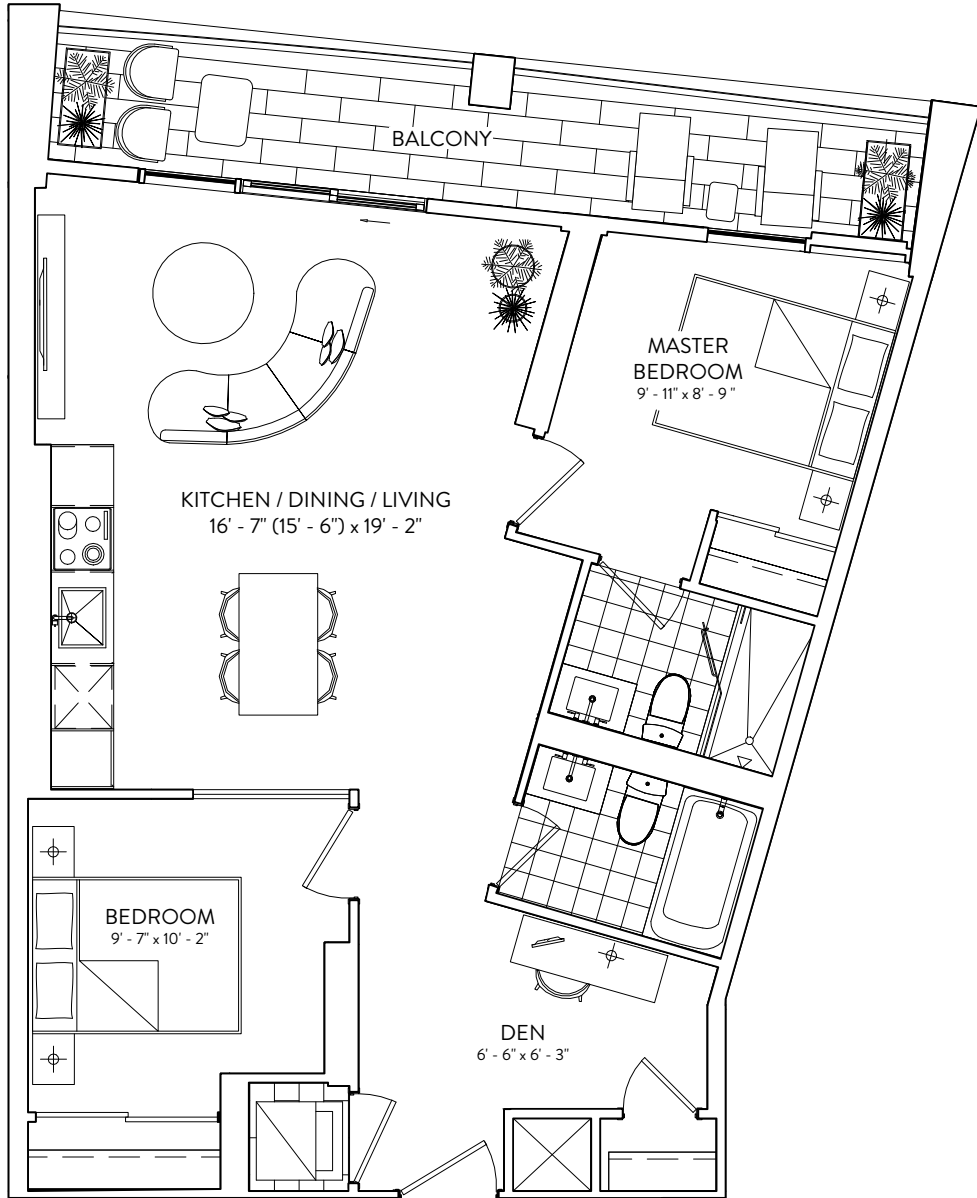
2 BEDROOM | 2 BATHROOM
INTERIOR: 786 SF | EXTERIOR: 85 SF




This plan is not to scale and is subject to architectural review and revision. The number of units per Floor and the number of floors may be reduced or increased at the vendor's sole discretion without notice. The purchaser acknowledges that the actual unit purchased may be a reverse layout to the plan shown. All materials, specifications, details and dimensions, if any, are approximate and subject to change without notice in order to comply with building site conditions and municipal, structural, vendor and/or architectural requirements. Actual living areas may vary from floor area stated. Floor areas have been measured and may vary in accordance with Bulletin #22 published by the Tarion Warranty Corporation. Bulkheads are not shown on this plan and may be located in areas of the Unit as required to provide venting and mechanical systems. Balconies, Terraces and Patios, if any, are exclusive use common elements shown for display purposes only and location and size are subject to change without notice. Window location, size and type may vary without notice. The length, width and directional position of the flooring are for illustration purposes only and may vary without notice. E.&O.E.

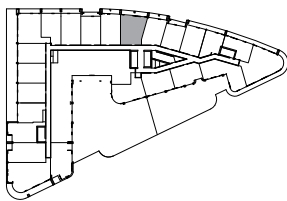
2B+D 822

2 BEDROOM + DEN | 2 BATHROOM
 INTERIOR: 822 SF | EXTERIOR: 115 SF



BALCONY
 FLOOR 3 | EXTERIOR: 115 SF
 FLOORS 4-7 | EXTERIOR: 107 SF

FLOORS 3-7 



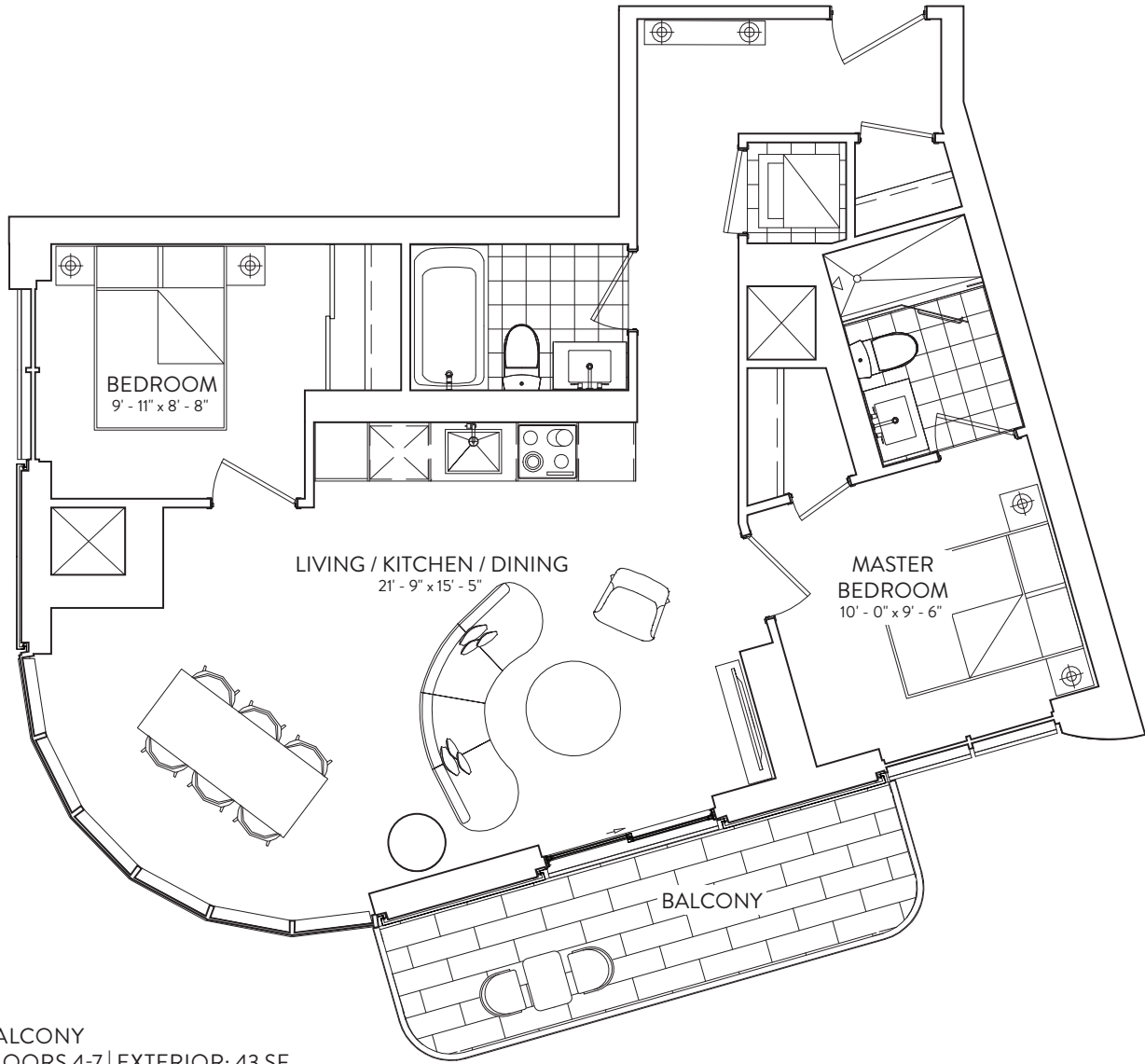
This plan is not to scale and is subject to architectural review and revision. The number of units per Floor and the number of floors may be reduced or increased at the vendor's sole discretion without notice. The purchaser acknowledges that the actual unit purchased may be a reverse layout to the plan shown. All materials, specifications, details and dimensions, if any, are approximate and subject to change without notice in order to comply with building site conditions and municipal, structural, vendor and/or architectural requirements. Actual living areas may vary from floor area stated. Floor areas have been measured and may vary in accordance with Bulletin #22 published by the Tarion Warranty Corporation. Bulkheads are not shown on this plan and may be located in areas of the Unit as required to provide venting and mechanical systems. Balconies, Terraces and Patios, if any, are exclusive use common elements shown for display purposes only and location and size are subject to change without notice. Window location, size and type may vary without notice. The length, width and directional position of the flooring are for illustration purposes only and may vary without notice. E.&O.E.

2B 843

2 BEDROOM | 2 BATHROOM

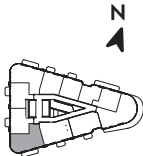
INTERIOR: 843 SF | EXTERIOR: 87 SF

GALLERIA 

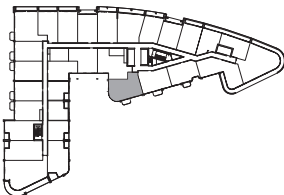


BALCONY
FLOORS 4-7 | EXTERIOR: 43 SF

FLOORS 9-31



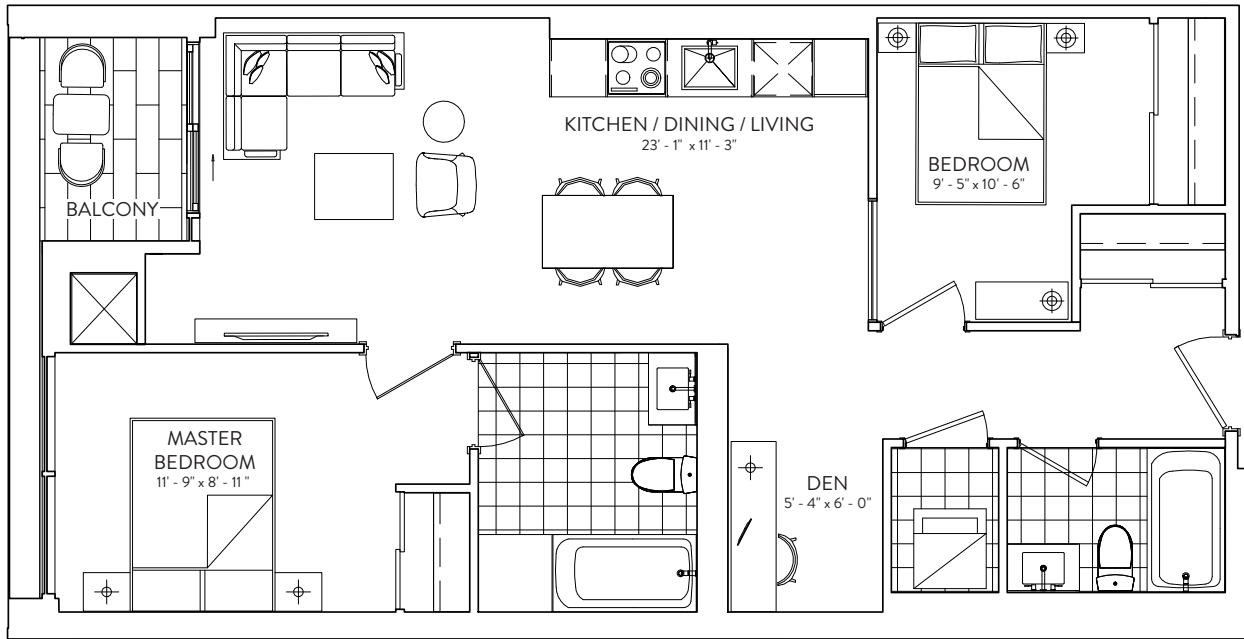
FLOORS 4-7



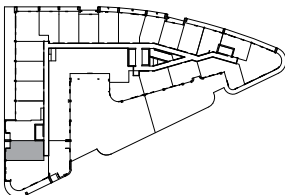
This plan is not to scale and is subject to architectural review and revision. The number of units per Floor and the number of floors may be reduced or increased at the vendor's sole discretion without notice. The purchaser acknowledges that the actual unit purchased may be a reverse layout to the plan shown. All materials, specifications, details and dimensions, if any, are approximate and subject to change without notice in order to comply with building site conditions and municipal, structural, vendor and/or architectural requirements. Actual living areas may vary from floor area stated. Floor areas have been measured and may vary in accordance with Bulletin #22 published by the Tarion Warranty Corporation. Bulkheads are not shown on this plan and may be located in areas of the Unit as required to provide venting and mechanical systems. Balconies, Terraces and Patios, if any, are exclusive use common elements shown for display purposes only and location and size are subject to change without notice. Window location, size and type may vary without notice. The length, width and directional position of the flooring are for illustration purposes only and may vary without notice. E.&O.E.

2B+D 854

2 BEDROOM + DEN | 2 BATHROOM
 INTERIOR: 854 SF | EXTERIOR: 32 SF



FLOORS 3-4



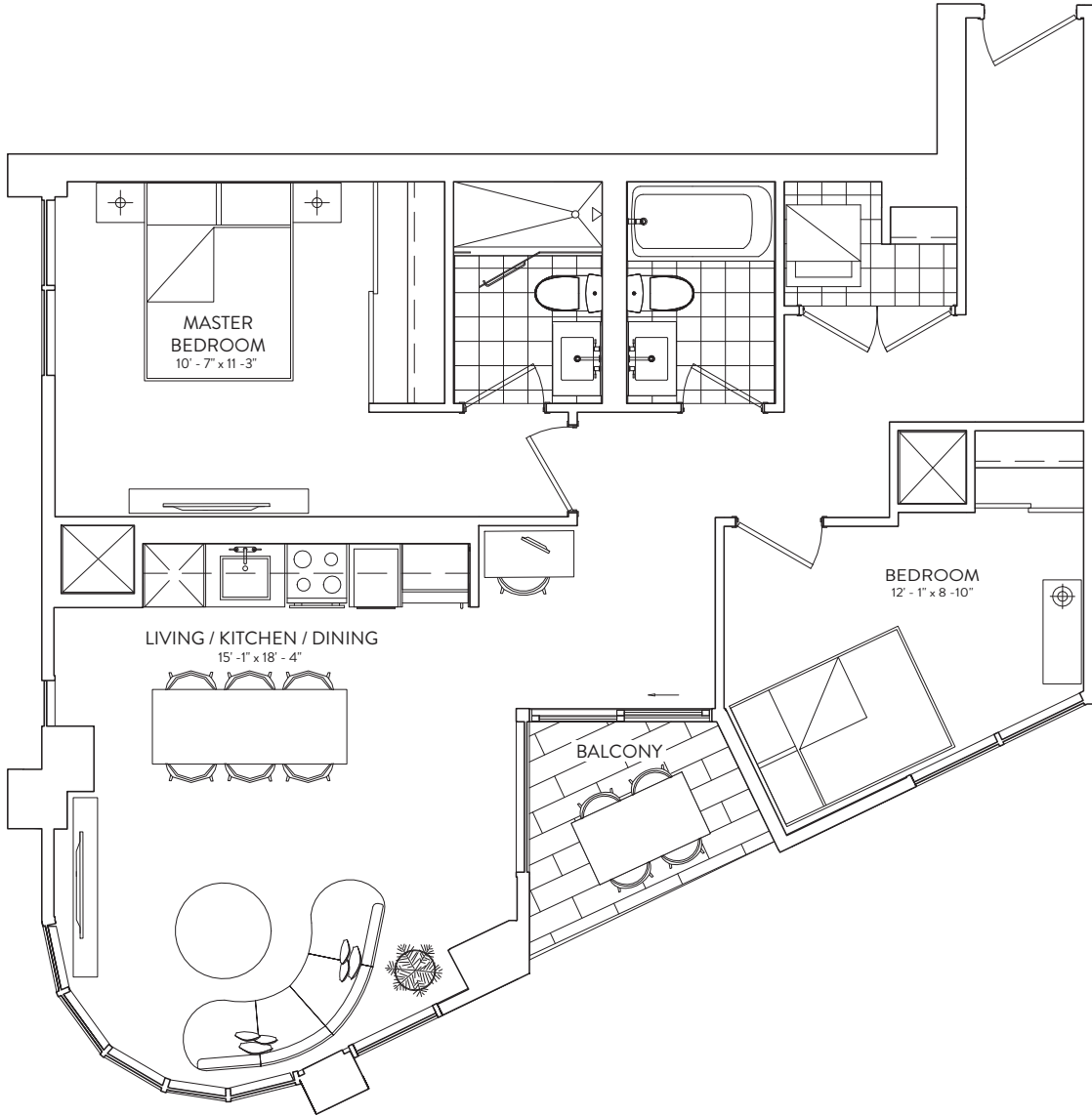
This plan is not to scale and is subject to architectural review and revision. The number of units per Floor and the number of floors may be reduced or increased at the vendor's sole discretion without notice. The purchaser acknowledges that the actual unit purchased may be a reverse layout to the plan shown. All materials, specifications, details and dimensions, if any, are approximate and subject to change without notice in order to comply with building site conditions and municipal, structural, vendor and/or architectural requirements. Actual living areas may vary from floor area stated. Floor areas have been measured and may vary in accordance with Bulletin #22 published by the Tarion Warranty Corporation. Bulkheads are not shown on this plan and may be located in areas of the Unit as required to provide venting and mechanical systems. Balconies, Terraces and Patios, if any, are exclusive use common elements shown for display purposes only and location and size are subject to change without notice. Window location, size and type may vary without notice. The length, width and directional position of the flooring are for illustration purposes only and may vary without notice. E.&O.E.

2B 905

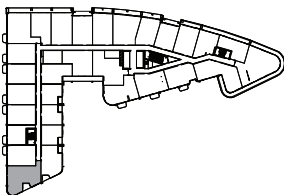
2 BEDROOM | 2 BATHROOM

INTERIOR: 905 SF | EXTERIOR: 38 SF

GALLERIA 



FLOORS 6-7



This plan is not to scale and is subject to architectural review and revision. The number of units per Floor and the number of floors may be reduced or increased at the vendor's sole discretion without notice. The purchaser acknowledges that the actual unit purchased may be a reverse layout to the plan shown. All materials, specifications, details and dimensions, if any, are approximate and subject to change without notice in order to comply with building site conditions and municipal, structural, vendor and/or architectural requirements. Actual living areas may vary from floor area stated. Floor areas have been measured and may vary in accordance with Bulletin #22 published by the Tarion Warranty Corporation. Bulkheads are not shown on this plan and may be located in areas of the Unit as required to provide venting and mechanical systems. Balconies, Terraces and Patios, if any, are exclusive use common elements shown for display purposes only and location and size are subject to change without notice. Window location, size and type may vary without notice. The length, width and directional position of the flooring are for illustration purposes only and may vary without notice. E.&O.E.

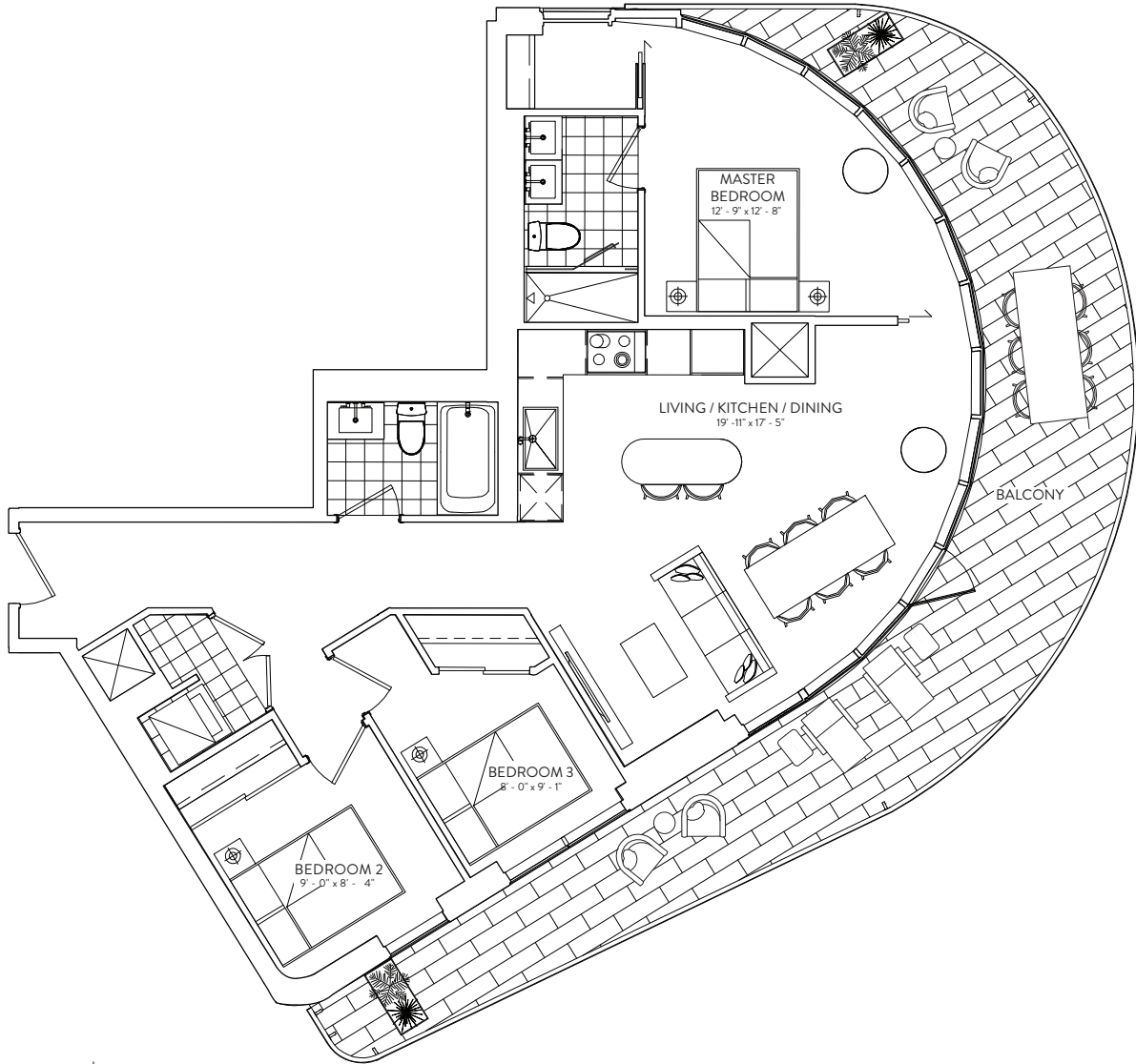
ELADCANADA

3B 994

3 BEDROOM | 2 BATHROOM

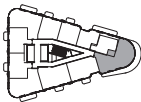
INTERIOR: 994 SF | EXTERIOR: 360 SF

GALLERIA 

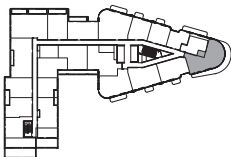


FLOOR 11 | EXTERIOR: 385 SF

FLOORS 11-27



FLOORS 9-10



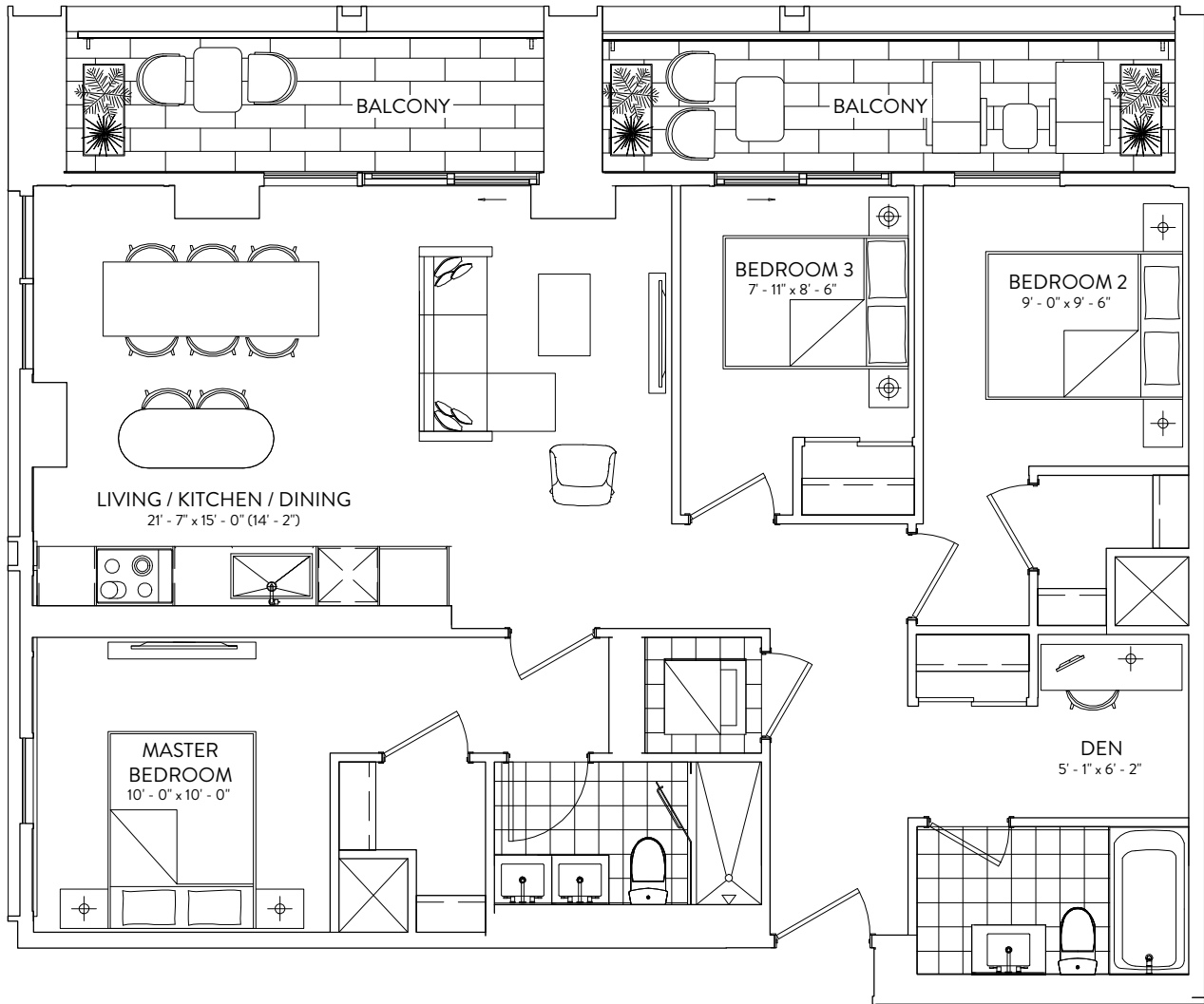
This plan is not to scale and is subject to architectural review and revision. The number of units per Floor and the number of floors may be reduced or increased at the vendor's sole discretion without notice. The purchaser acknowledges that the actual unit purchased may be a reverse layout to the plan shown. All materials, specifications, details and dimensions, if any, are approximate and subject to change without notice in order to comply with building site conditions and municipal, structural, vendor and/or architectural requirements. Actual living areas may vary from floor area stated. Floor areas have been measured and may vary in accordance with Bulletin #22 published by the Tarion Warranty Corporation. Bulkheads are not shown on this plan and may be located in areas of the Unit as required to provide venting and mechanical systems. Balconies, Terraces and Patios, if any, are exclusive use common elements shown for display purposes only and location and size are subject to change without notice. Window location, size and type may vary without notice. The length, width and directional position of the flooring are for illustration purposes only and may vary without notice. E.&O.E.

ELADCANADA

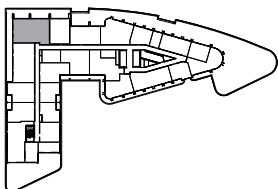
3B+D 1110

3 BEDROOM + DEN | 2 BATHROOM
INTERIOR: 1110 SF | EXTERIOR: 158 SF

GALLERIA



FLOORS 9-10

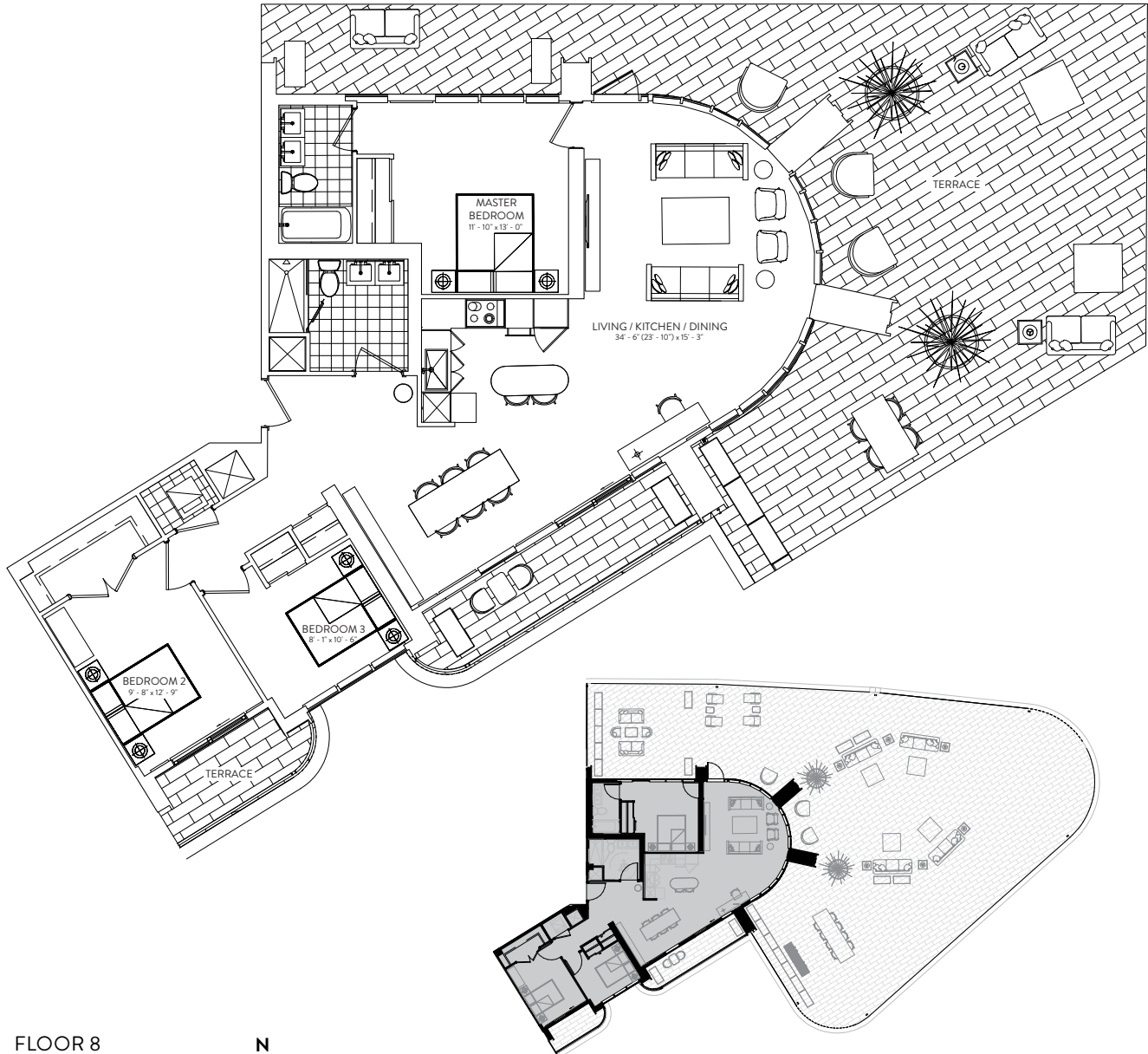


This plan is not to scale and is subject to architectural review and revision. The number of units per Floor and the number of floors may be reduced or increased at the vendor's sole discretion without notice. The purchaser acknowledges that the actual unit purchased may be a reverse layout to the plan shown. All materials, specifications, details and dimensions, if any, are approximate and subject to change without notice in order to comply with building site conditions and municipal, structural, vendor and/or architectural requirements. Actual living areas may vary from floor area stated. Floor areas have been measured and may vary in accordance with Bulletin #22 published by the Tarion Warranty Corporation. Bulkheads are not shown on this plan and may be located in areas of the Unit as required to provide venting and mechanical systems. Balconies, Terraces and Patios, if any, are exclusive use common elements shown for display purposes only and location and size are subject to change without notice. Window location, size and type may vary without notice. The length, width and directional position of the flooring are for illustration purposes only and may vary without notice. E.&O.E.

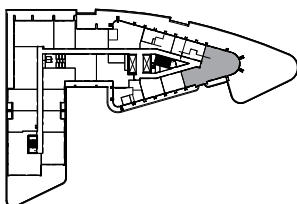
ELADCANADA

3B 1426-E

INTERIOR: 1,426 SF | EXTERIOR: 3,298 SF 3 BEDROOM | 2 BATHROOM



FLOOR 8



This plan is not to scale and is subject to architectural review and revision. The number of units per Floor and the number of floors may be reduced or increased at the vendor's sole discretion without notice. The purchaser acknowledges that the actual unit purchased may be a reverse layout to the plan shown. All materials, specifications, details and dimensions, if any, are approximate and subject to change without notice in order to comply with building site conditions and municipal, structural, vendor and/or architectural requirements. Actual living areas may vary from floor area stated. Floor areas have been measured and may vary in accordance with Bulletin #22 published by the Tarion Warranty Corporation. Bulkheads are not shown on this plan and may be located in areas of the Unit as required to provide venting and mechanical systems. Balconies, Terraces and Patios, if any, are exclusive use common elements shown for display purposes only and location and size are subject to change without notice. Window location, size and type may vary without notice. The length, width and directional position of the flooring are for illustration purposes only and may vary without notice. E.&O.E.