

BRAVO



SUITE TYPE	STARTING FROM
STUDIO	\$450,990 - \$480,990
ONE BEDROOM	\$565,990 - \$620,990
ONE BEDROOM + DEN, ONE BATH	\$650,990 - \$675,990
ONE BEDROOM + DEN, TWO BATH	\$665,990 - \$750,990
TWO BEDROOM	\$750,990 - \$820,990
TWO BEDROOM + DEN	\$865,990 - \$885,990

DEPOSIT STRUCTURE
<p>\$12,000 on Signing Balance of 5% in 30 days 5% in 300 days 2.5% in 600 days 2.5% in 750 days 5% on Occupancy</p> <p>Deposit Payable to: <i>Dentons Canada LLP In Trust</i></p>

PARKING

(Available for purchase with 2 bedroom and larger suites only)

Early Bird Price ~~\$70,000~~ \$68,000

LOCKER

\$5,000

MAINTENANCE FEE

\$0.69/sq.ft.

Hydro, Water, Heating/Cooling metered separately

INCENTIVES

Free Assignment

Capped Development Levies:

699 sq.ft. or Smaller: \$10,000 + HST

700 sq.ft. or Larger: ~~\$12,000~~ \$10,000 + HST (Early Bird Incentive)

Right To Lease During Interim Occupancy

Capped Meter Installation: \$2,000 + HST

Free Vertical Blinds

TENTATIVE OCCUPANCY DATE

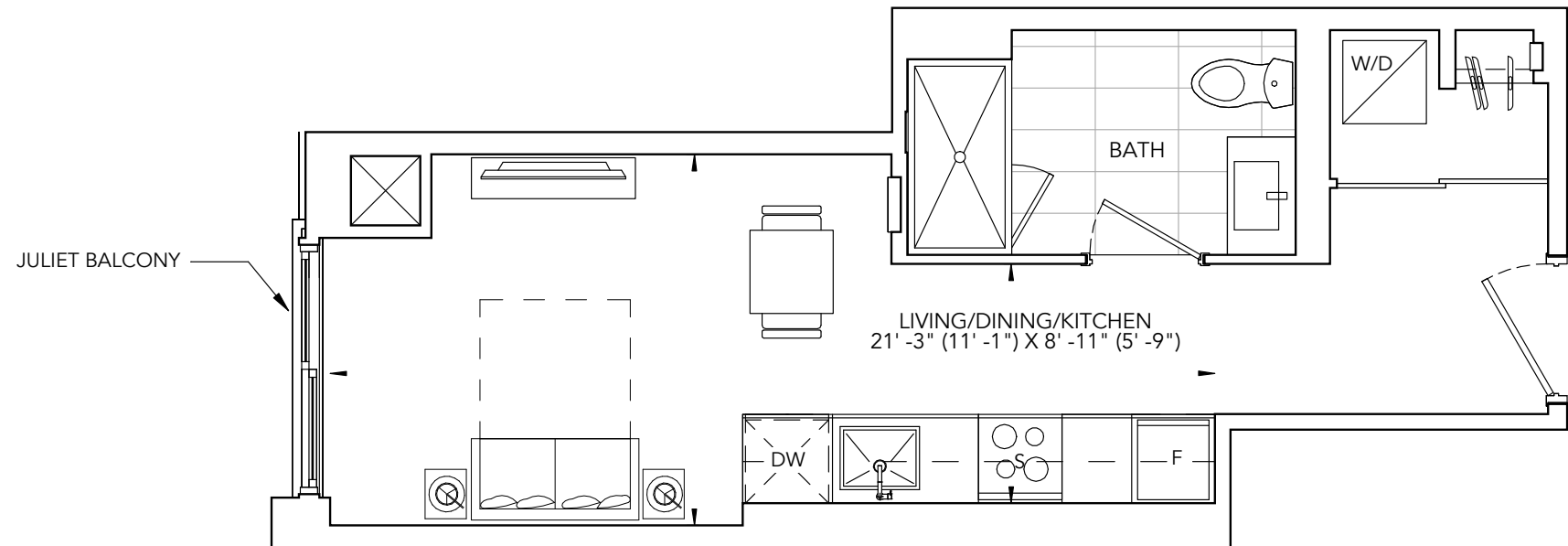
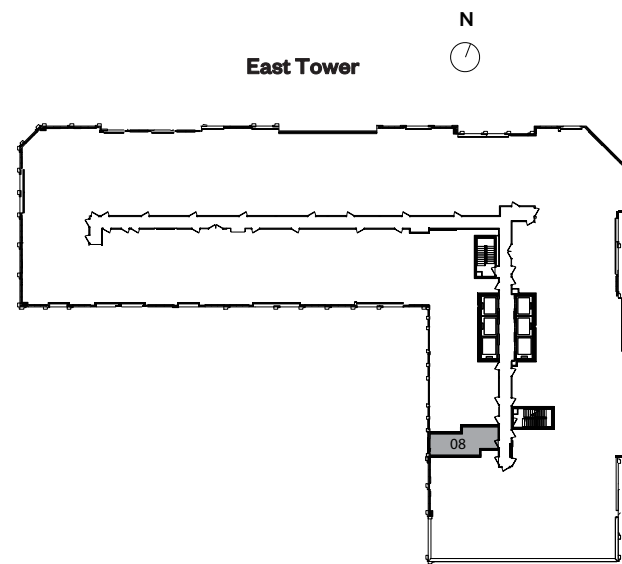
Q1 2028



All prices, figures and materials are preliminary and are subject to change without notice E. & O. E. Note: For more information on the method used for calculating the floor area of any unit, reference should be made to Home Construction Regulatory Authority ("HCRA") Directive. May 2023

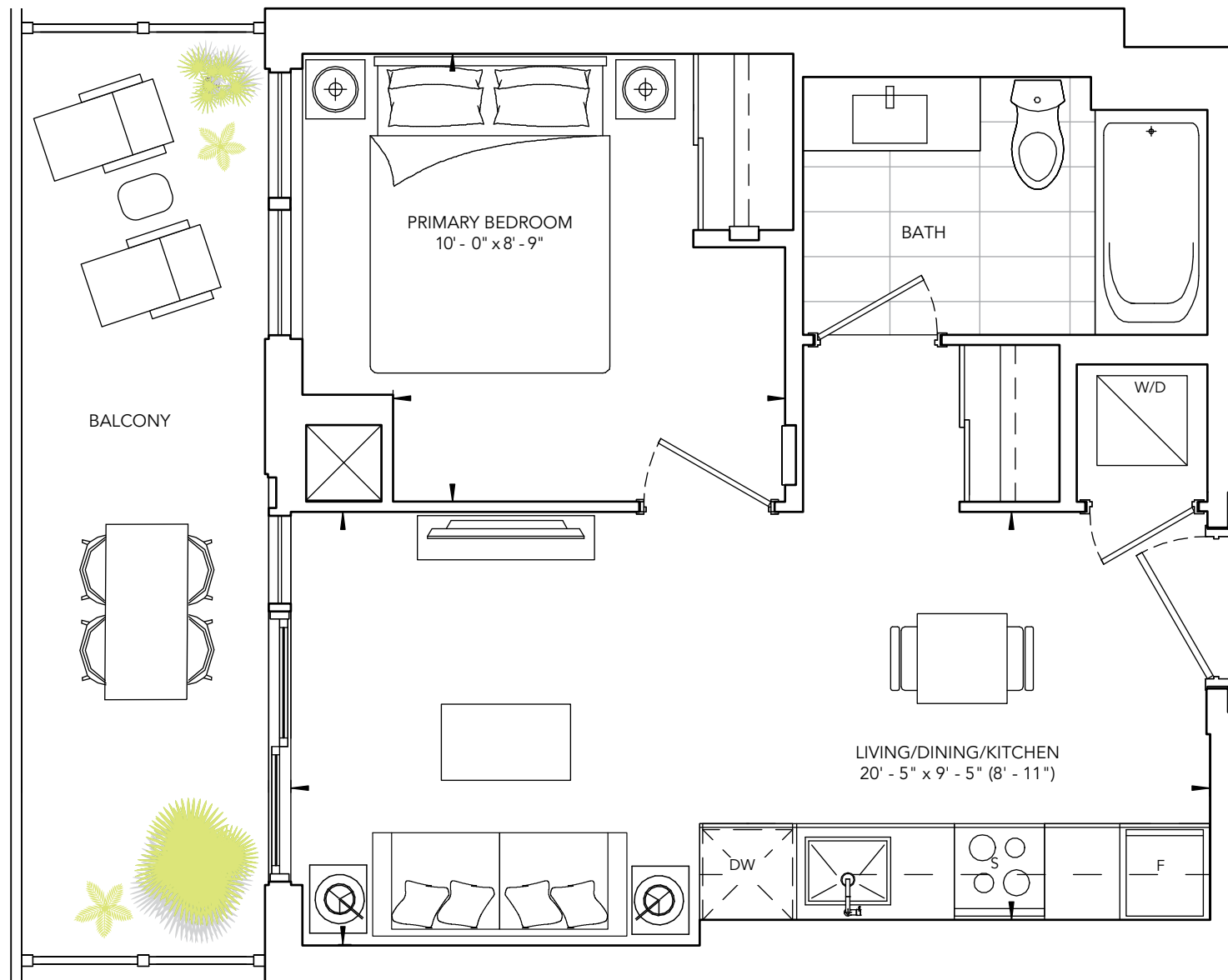
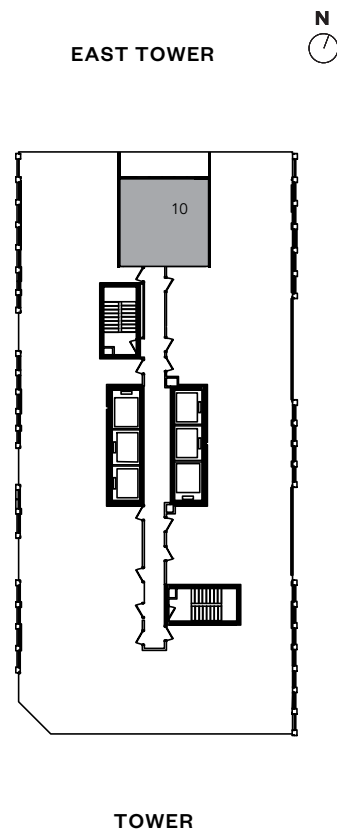
RIO 334

STUDIO, ONE BATH
INTERIOR: 334 SQ.FT. | EXTERIOR: 0 SQ.FT.



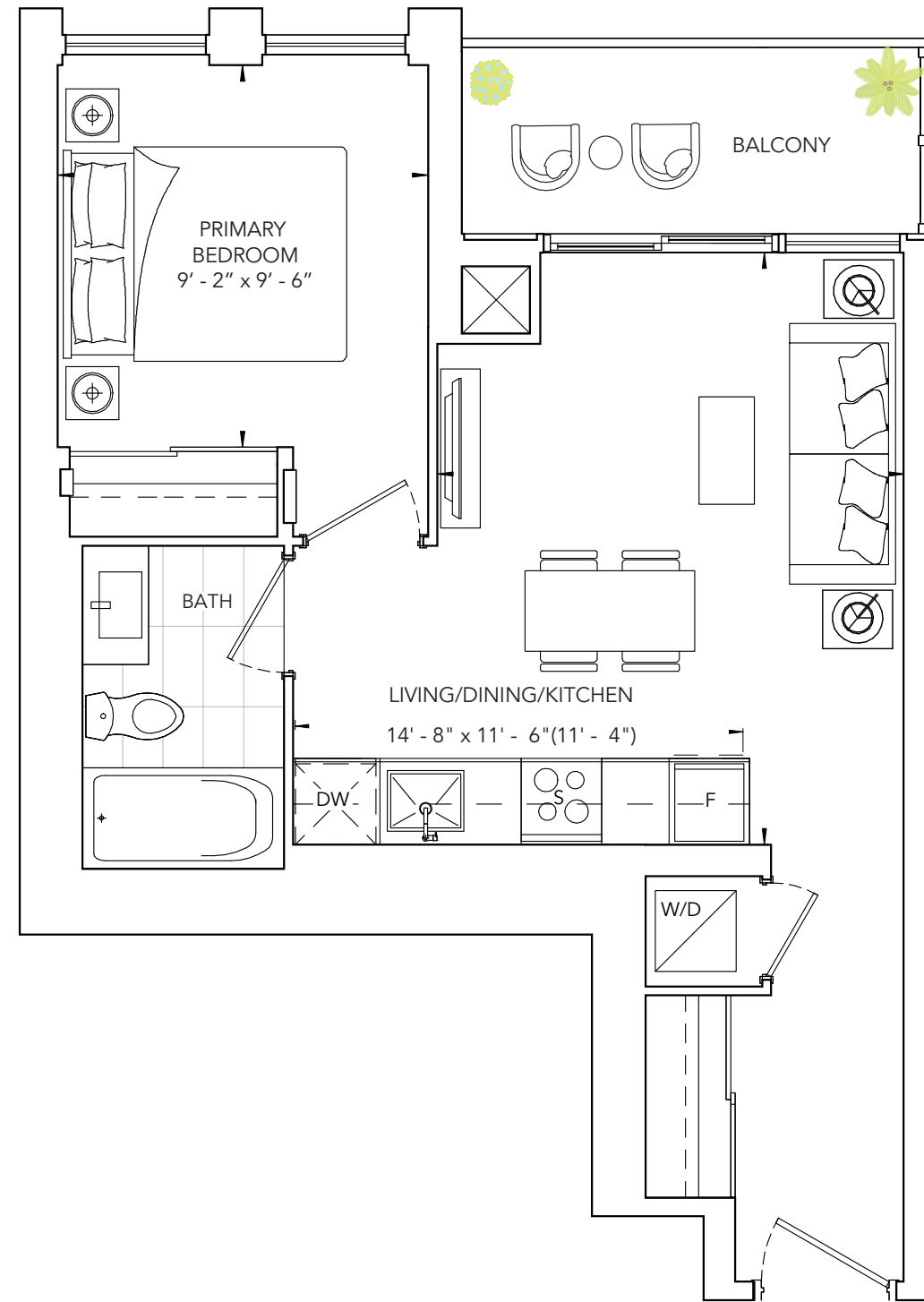
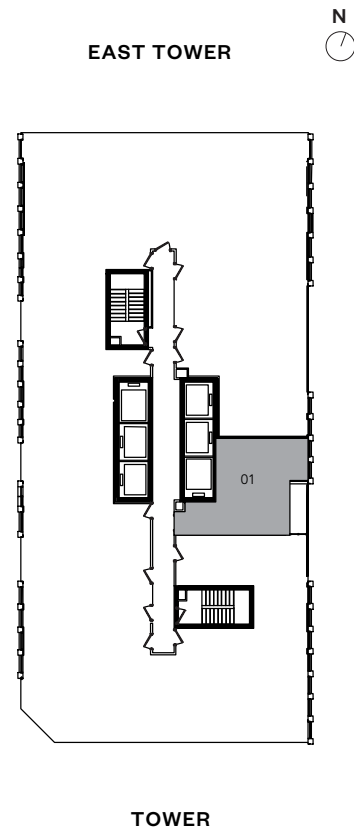
NEW ORLEANS 439

ONE BEDROOM, ONE BATH
 INTERIOR: 439 SQ.FT. | EXTERIOR: 102 SQ.FT.



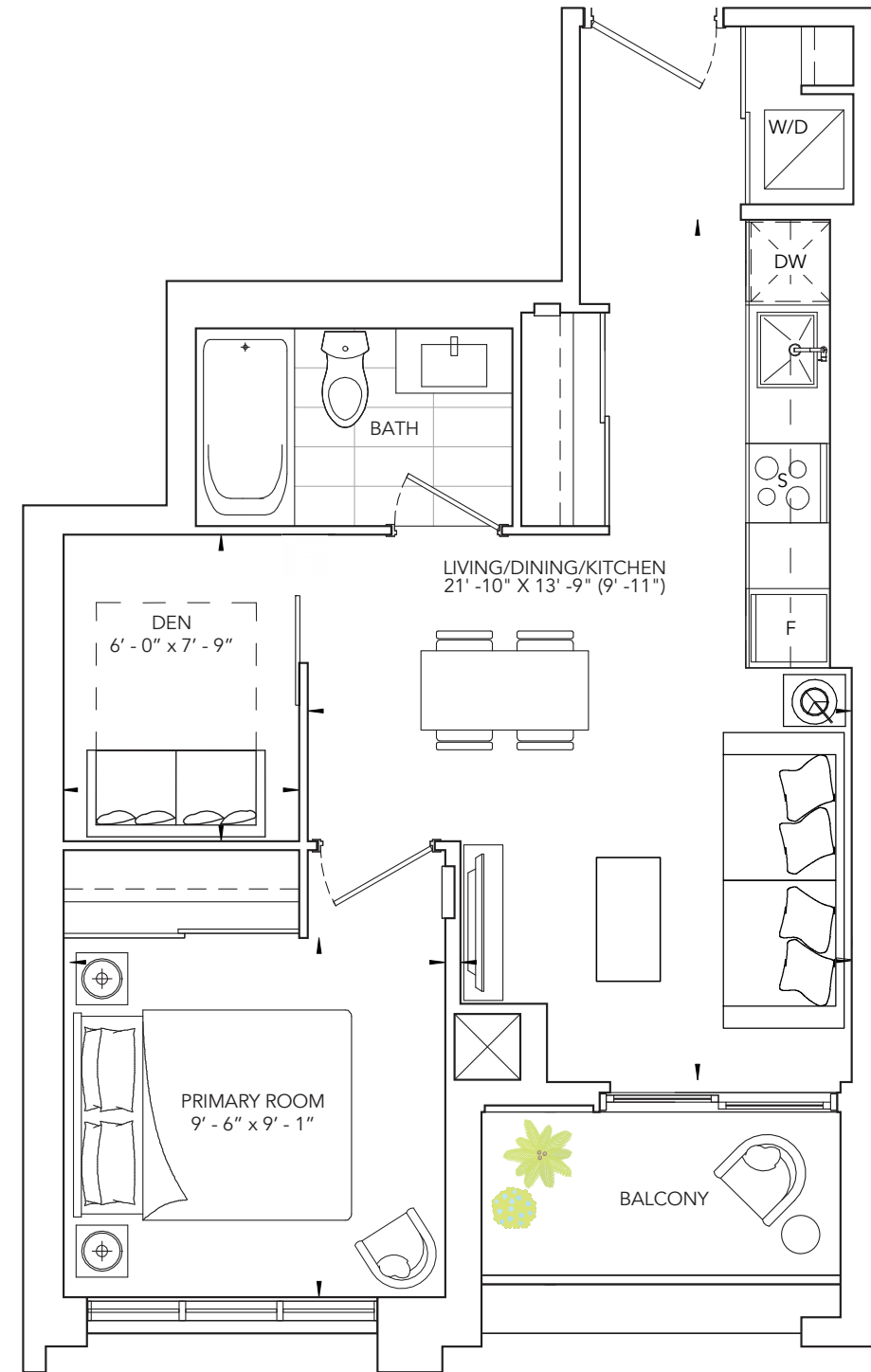
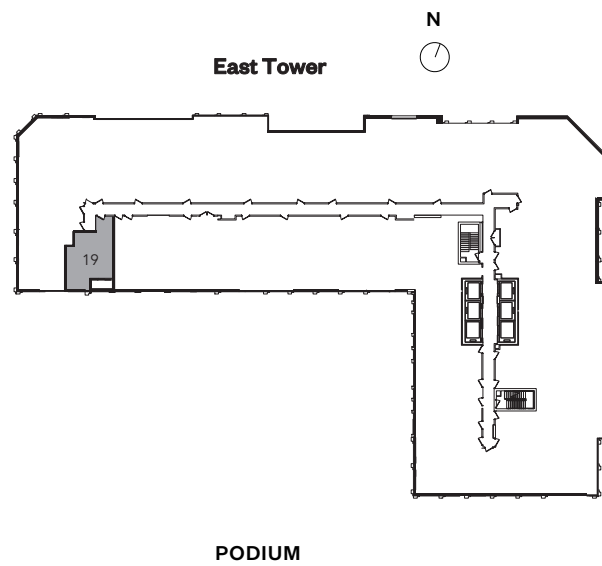
NEW ORLEANS 503

ONE BEDROOM, ONE BATH
INTERIOR: 503 SQ.FT. | EXTERIOR: 45 SQ.FT.



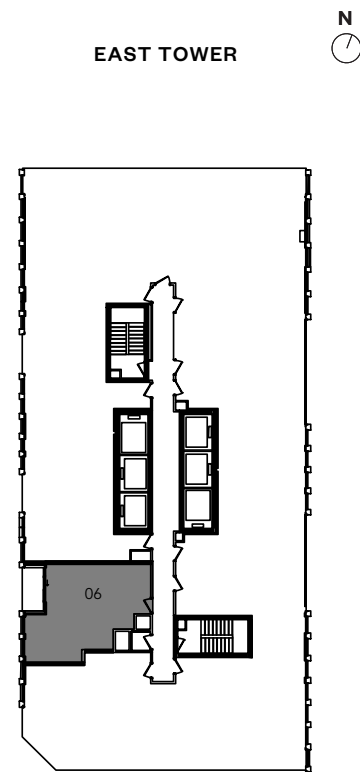
KYOTO 542

ONE BEDROOM + DEN, ONE BATH
INTERIOR: 542 SQ.FT. | EXTERIOR: 36 SQ.FT.

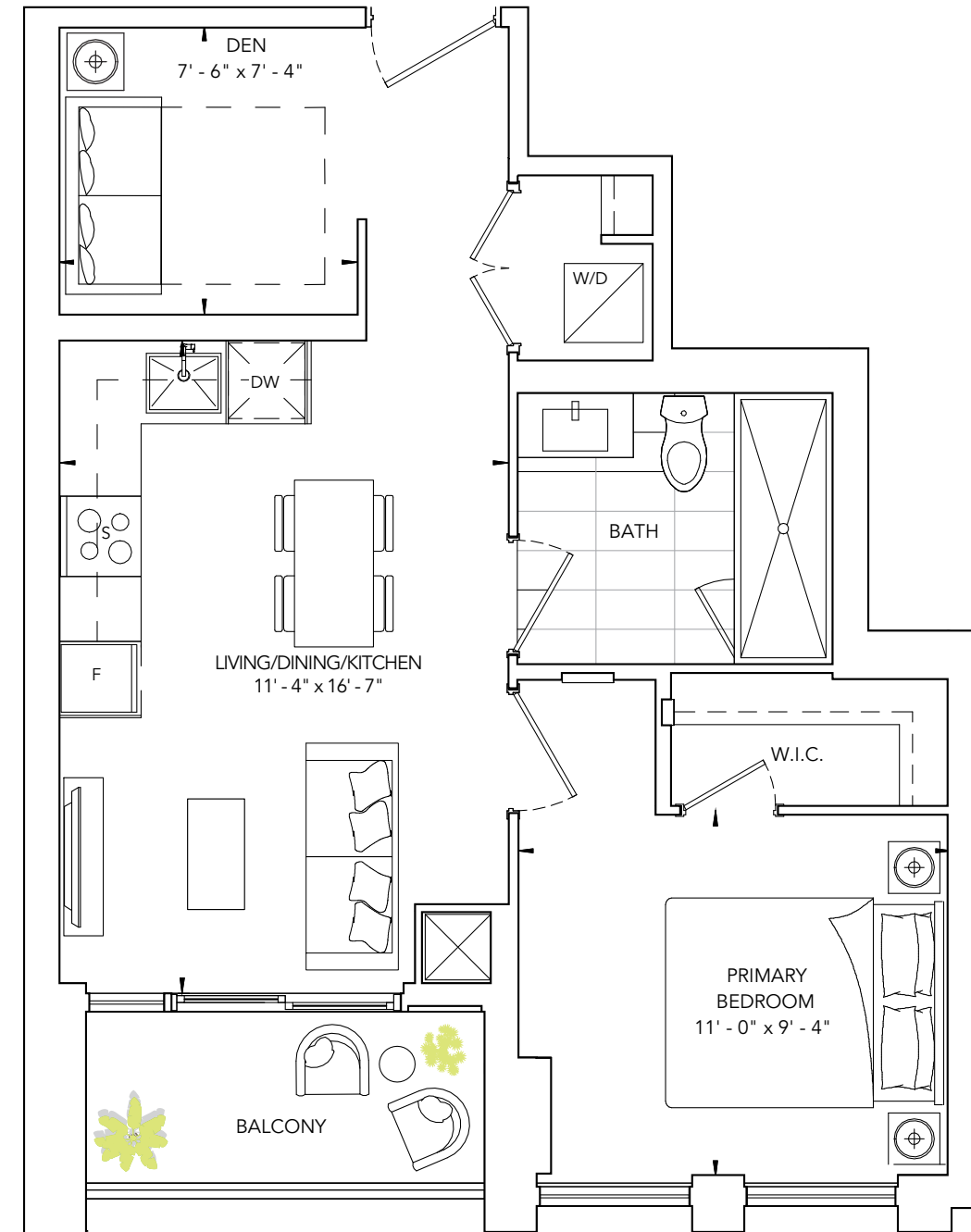


KYOTO 561

ONE BEDROOM + DEN, ONE BATH
INTERIOR: 561 SQ.FT. | EXTERIOR: 40 SQ.FT.

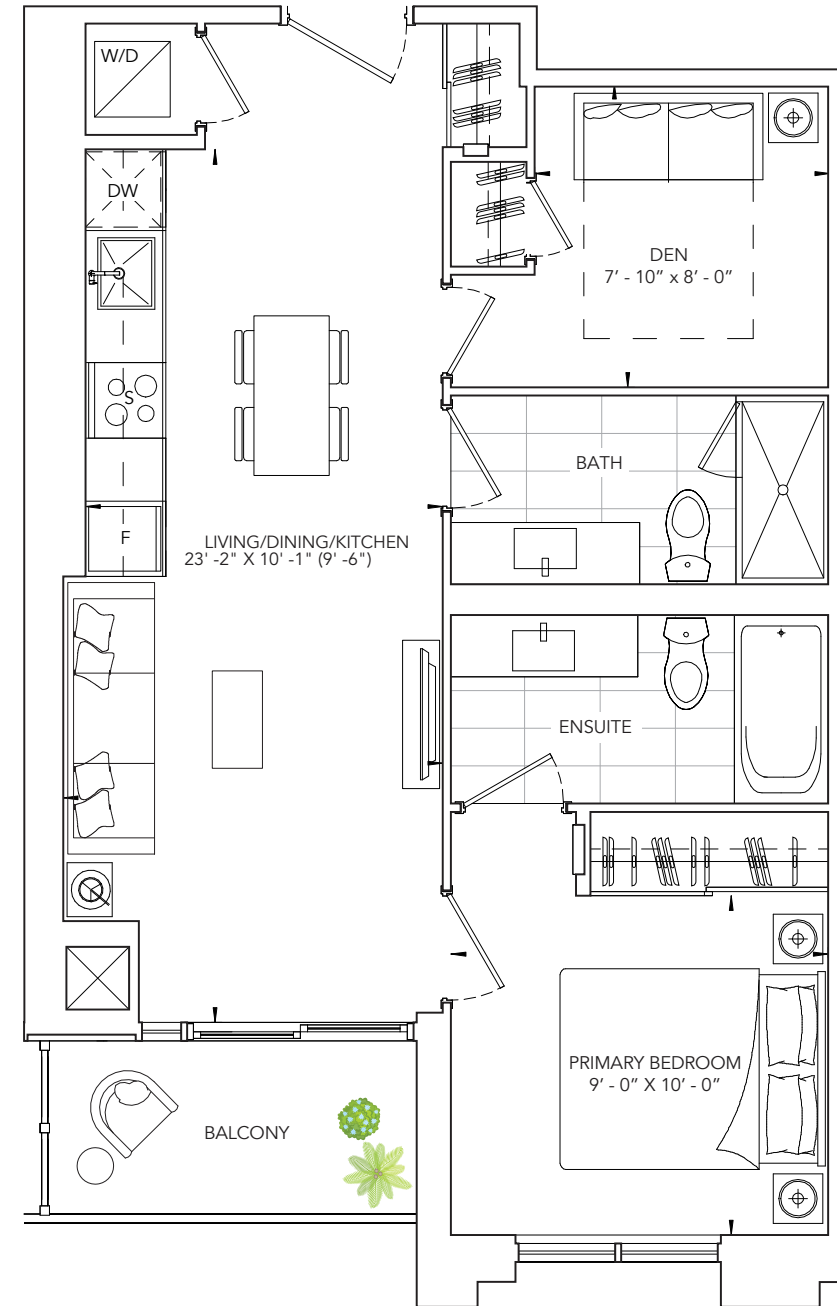
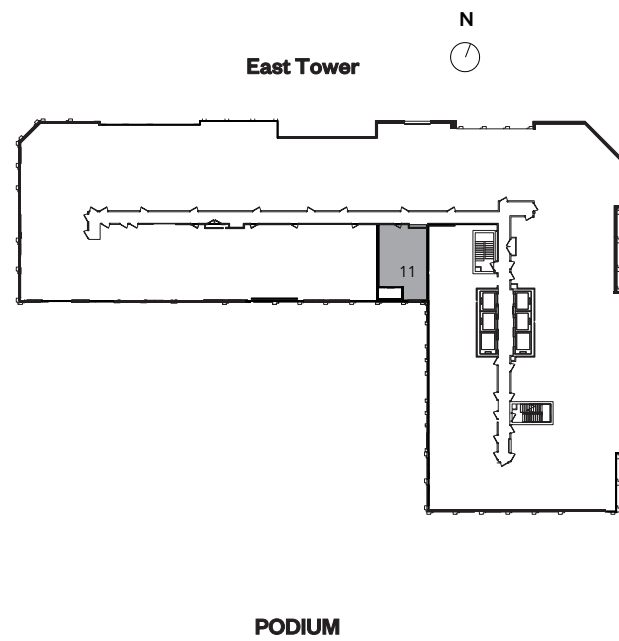


TOWER



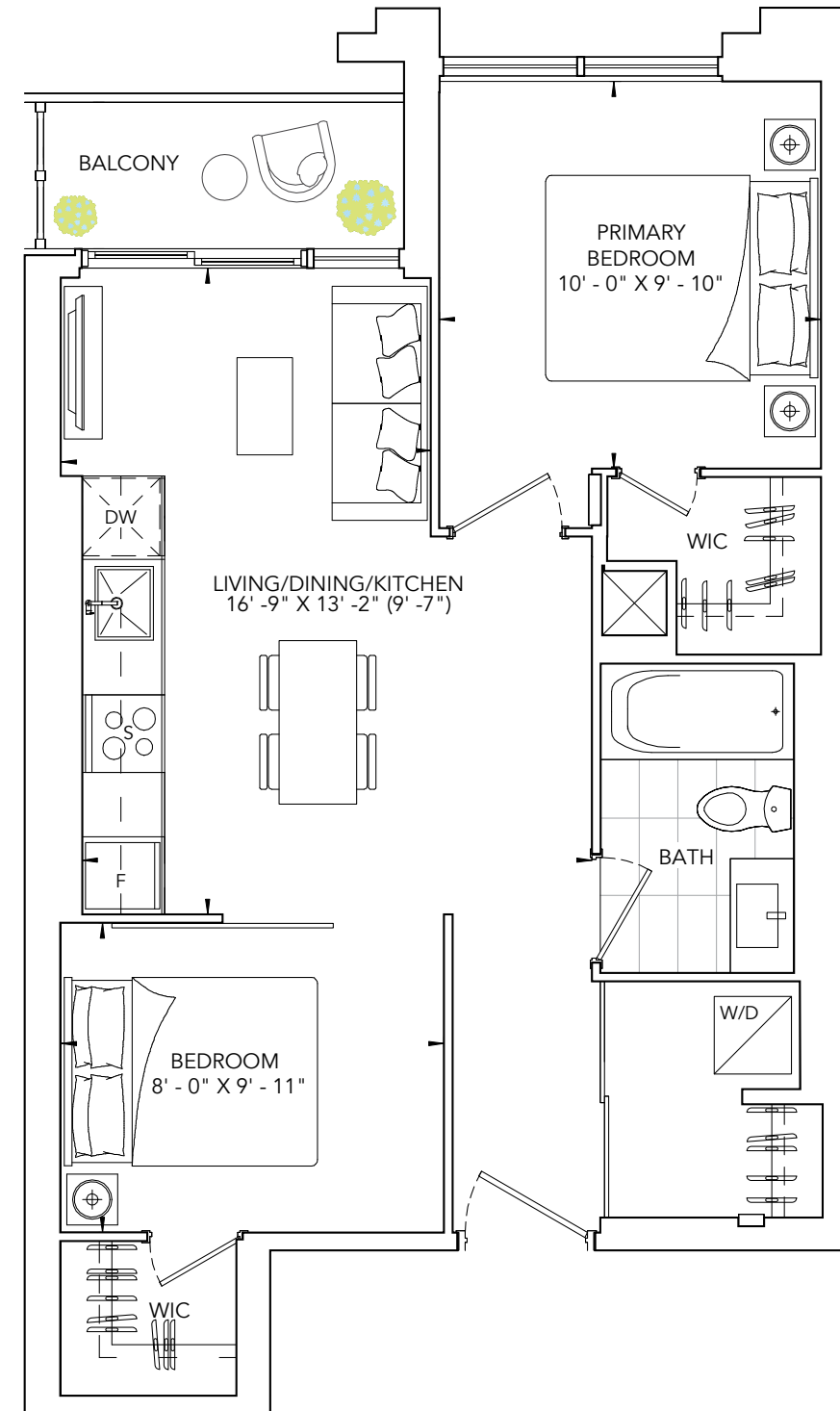
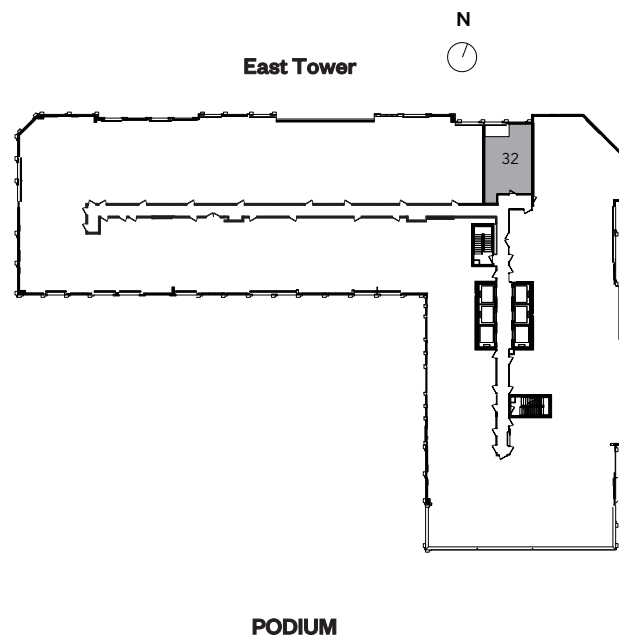
BANGALORE 647

ONE BEDROOM + DEN, TWO BATH
INTERIOR: 647 SQ.FT. | EXTERIOR: 48 SQ.FT.



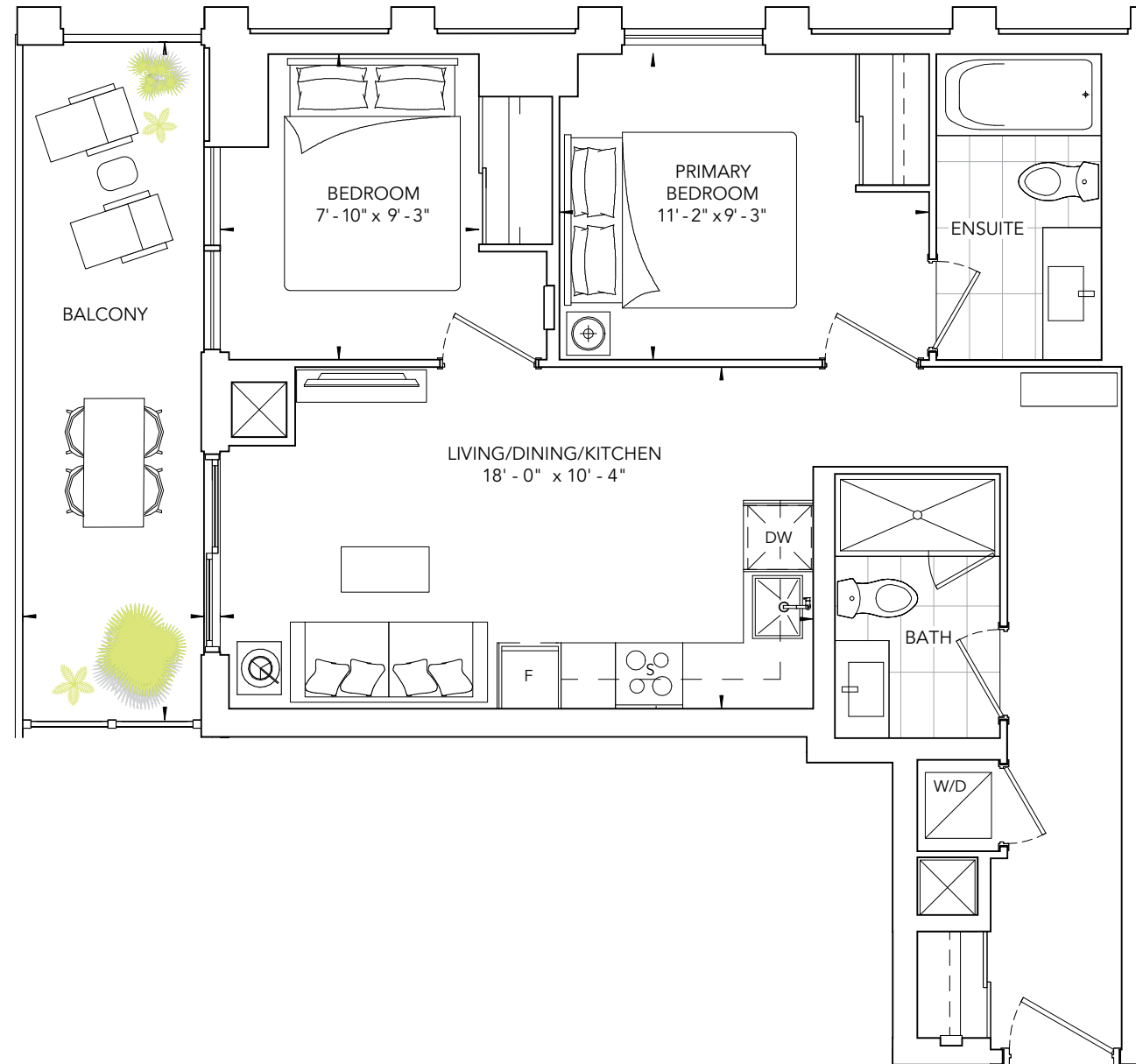
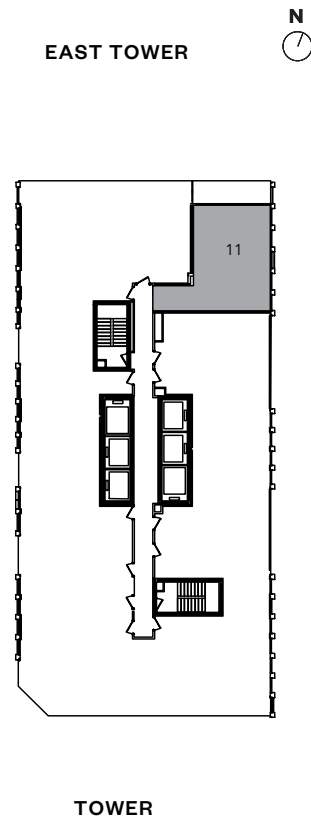
VALENCIA 620

TWO BEDROOM, ONE BATH
INTERIOR: 620 SQ.FT. | EXTERIOR: 33 SQ.FT.



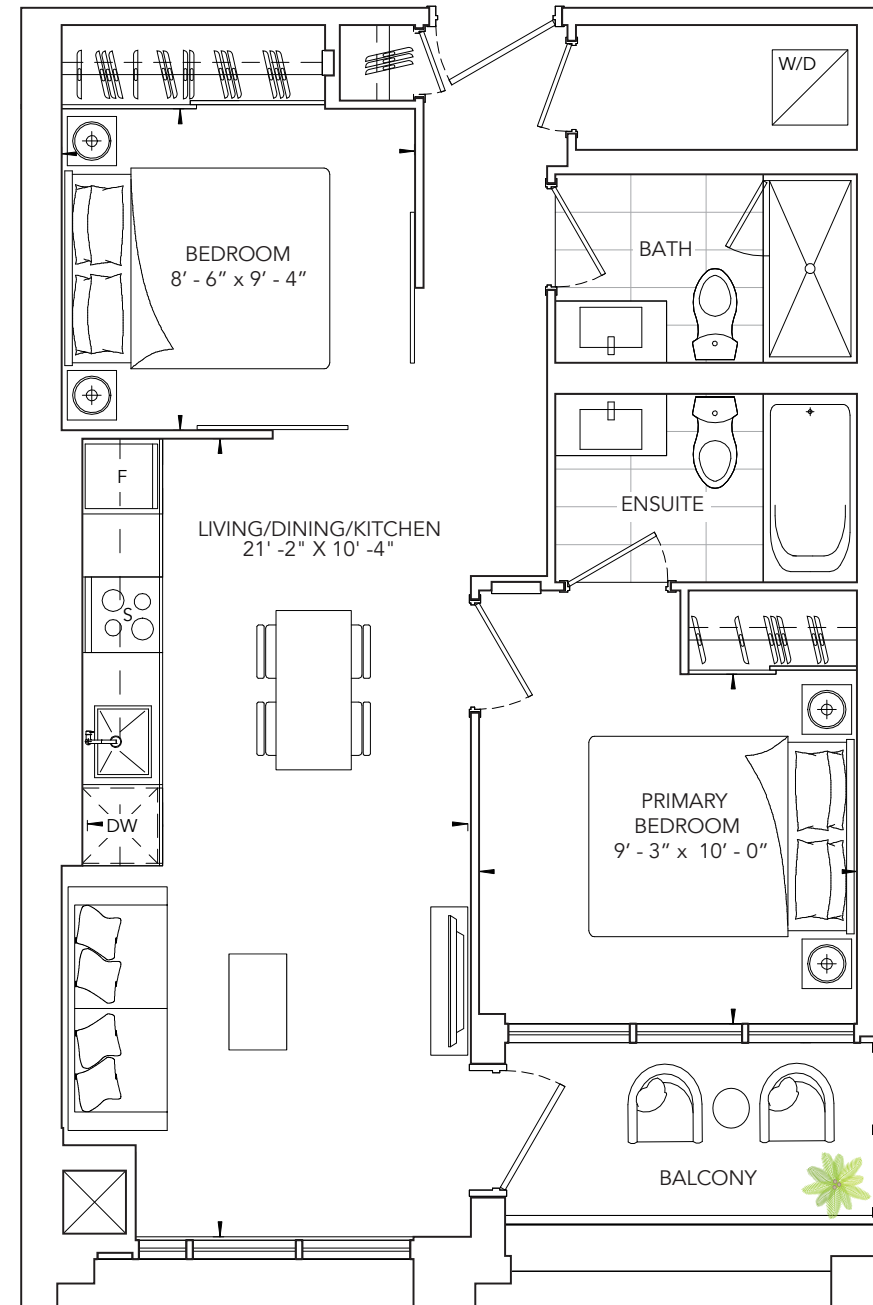
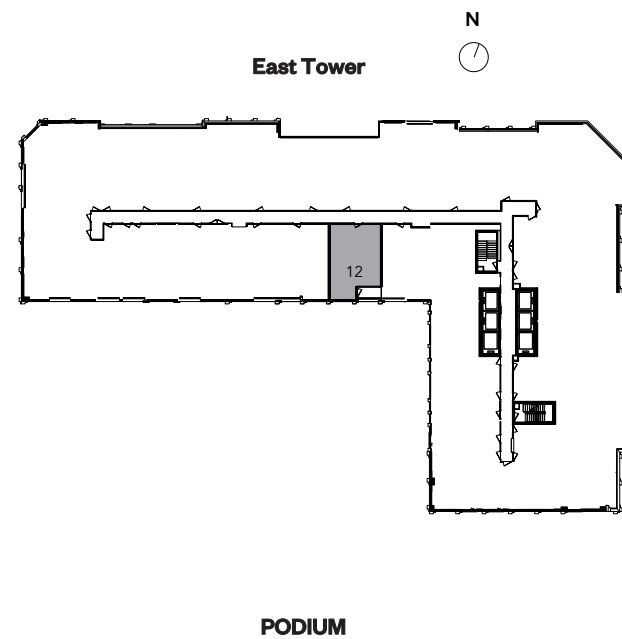
VALENCIA 680

TWO BEDROOM, TWO BATH
INTERIOR: 680 SQ.FT. | EXTERIOR: 99 SQ.FT.



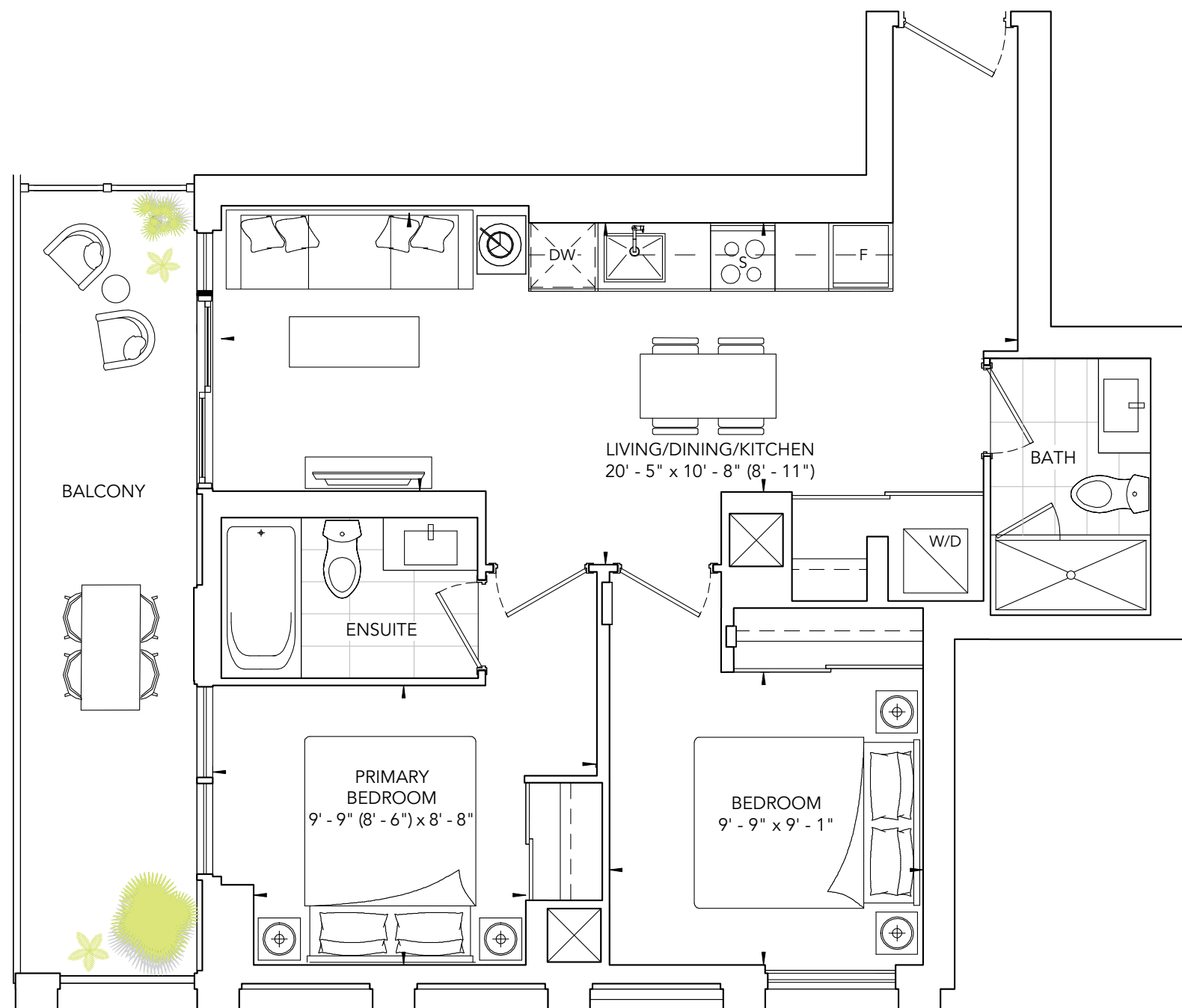
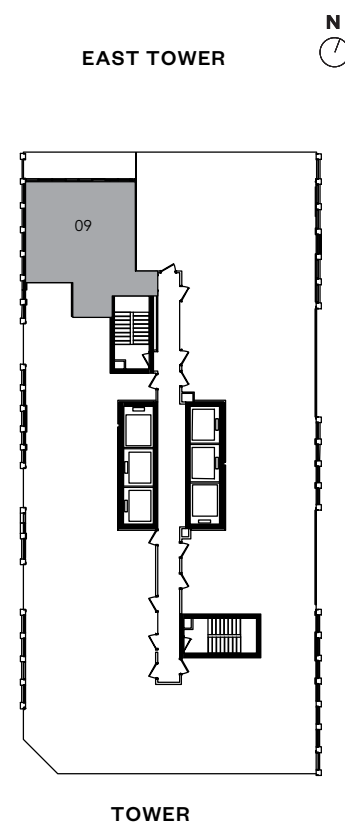
VALENCIA 683

TWO BEDROOM, TWO BATH
INTERIOR: 683 SQ.FT. | EXTERIOR: 48 SQ.FT.



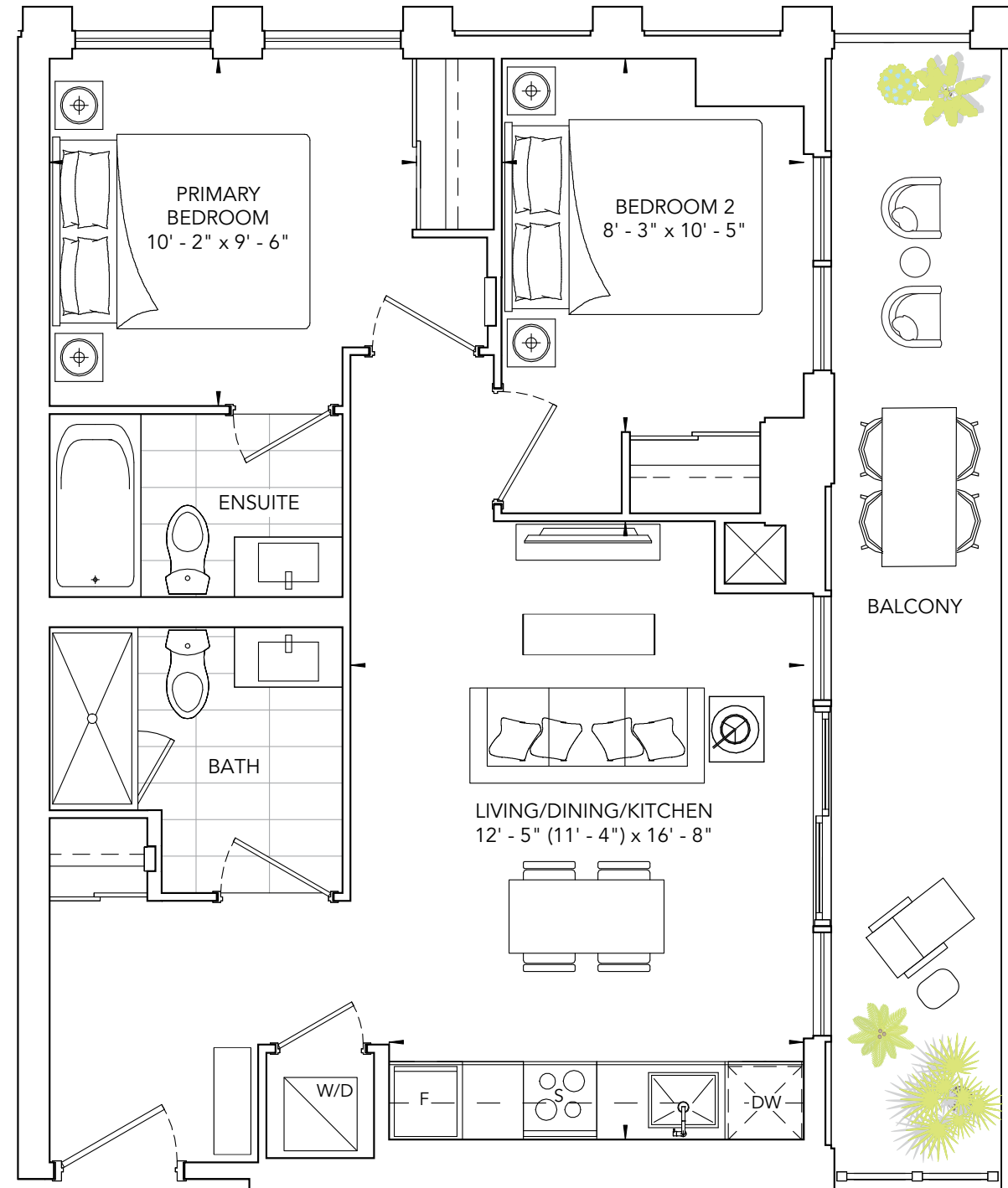
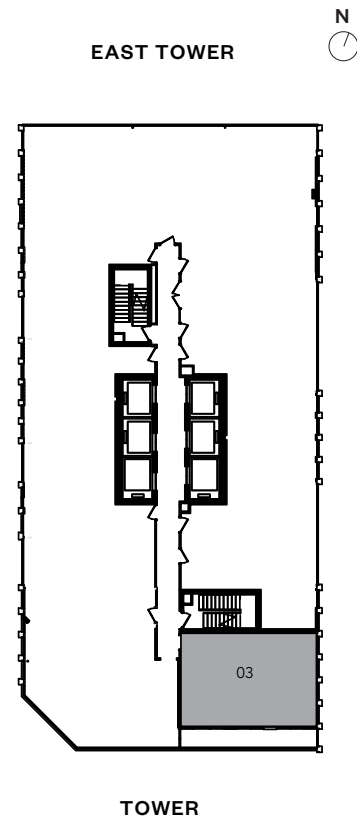
VALENCIA 692

TWO BEDROOM, TWO BATH
INTERIOR: 692 SQ.FT. | EXTERIOR: 118 SQ.FT.



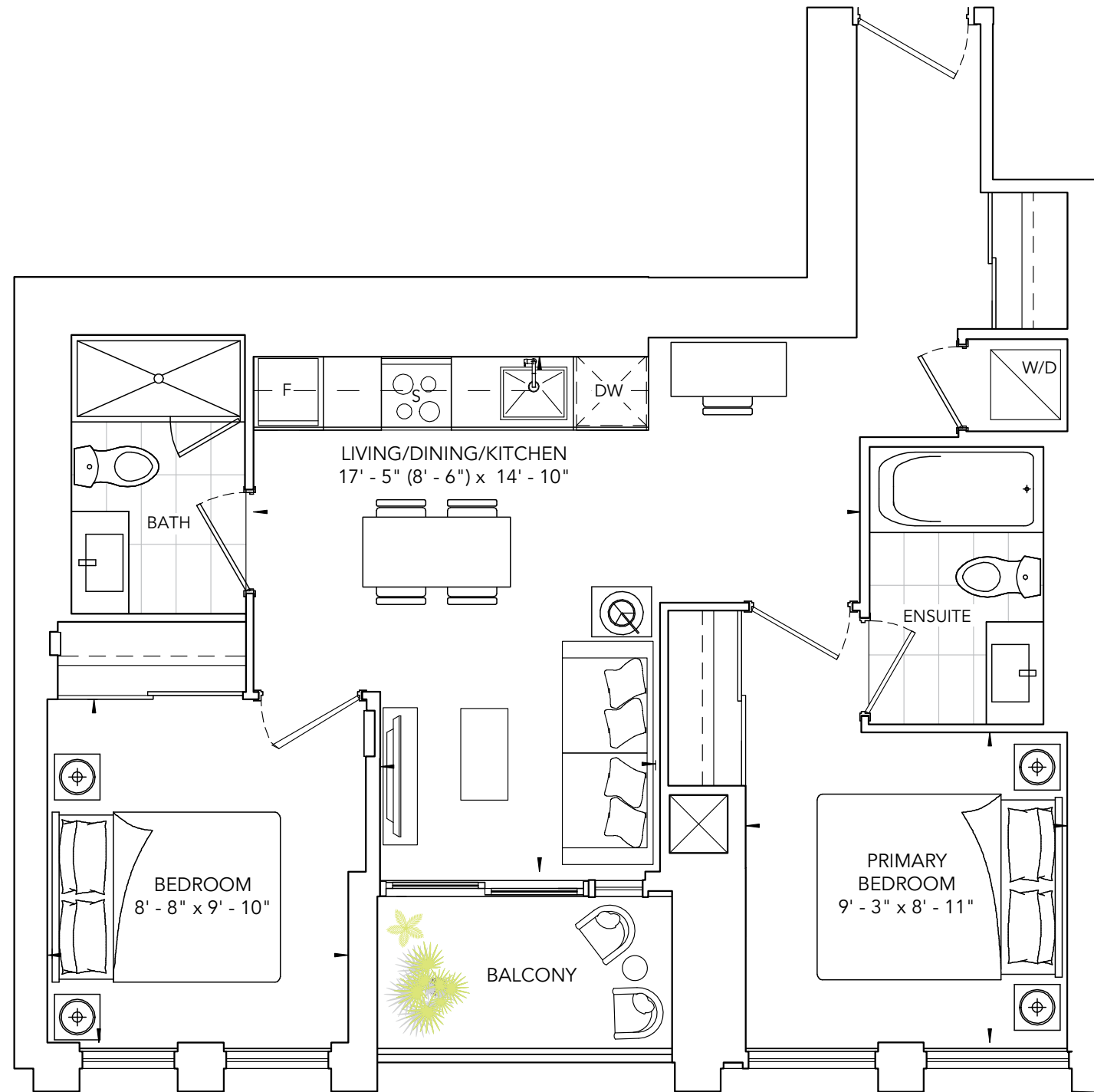
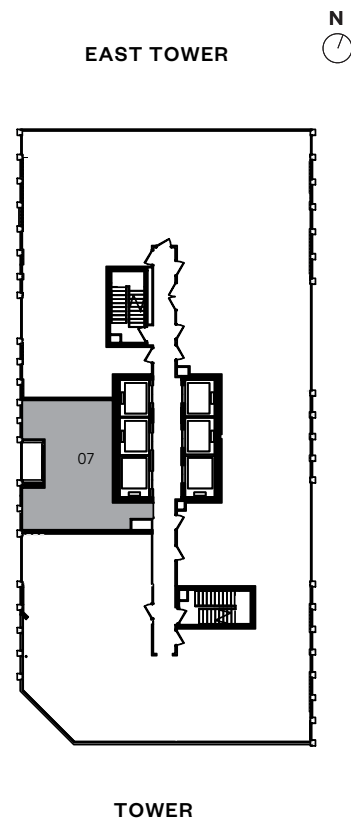
VALENCIA 697

TWO BEDROOM, TWO BATH
INTERIOR: 697 SQ.FT. | EXTERIOR: 126 SQ.FT.



VALENCIA 698

TWO BEDROOM, TWO BATH
INTERIOR: 698 SQ.FT. | EXTERIOR: 34 SQ.FT.



CALIFORNIA 817

TWO BEDROOM + DEN, TWO BATH
INTERIOR: 817 SQ.FT. | EXTERIOR: 44 SQ.FT.

