

THE GREENWICH

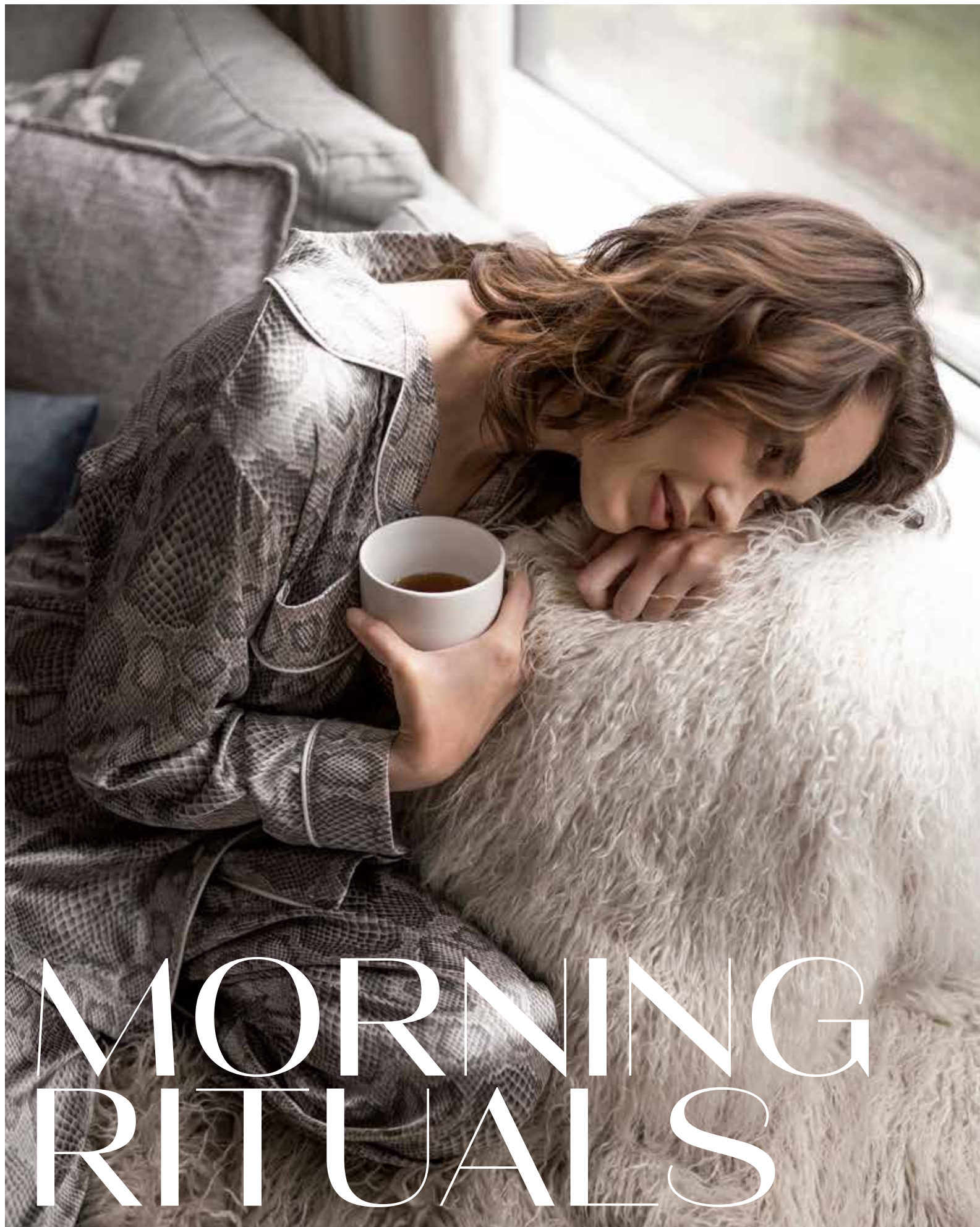
CONDOS AT OAKVILLAGE



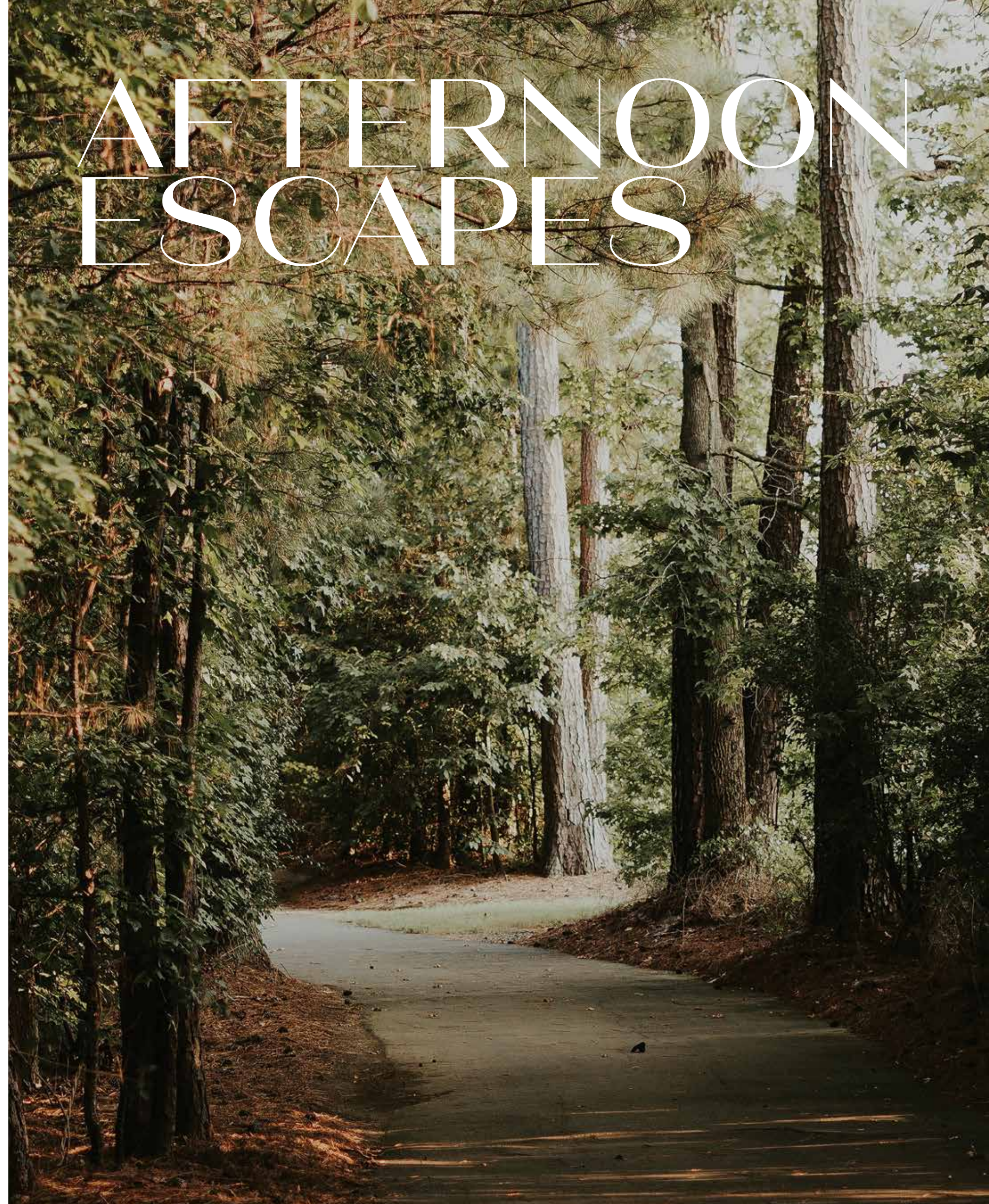
BRANTHAVEN

BRANTHAVEN

LIVE THE LIFE™ you've always dreamed of.



Discover **The Greenwich Condos at Oakvillage**. Where city and nature are in harmony.
Where culture and convenience align. Where Trafalgar and Dundas meet.



THE
GREENWICH

CONDOS AT OAKVILLAGE



THE GREENWICH'S DISTINCTIVE CURVED DESIGN DRAWS ITS INSPIRATION FROM THE ICONIC ARCHITECTURAL APARTMENTS OF NEW YORK'S HISTORIC WEST SIDE, REIMAGINED FOR TODAY'S DESIGN SAVVY DISCERNING HOMEBUYERS.



TRAFALGAR ROAD - STRIKING SILHOUETTE

THE SHAPE OF THINGS TO COME

Dynamic design from every curve and angle.

Soaring 20 storeys above the Oakville skyline, The Greenwich will be an iconic addition to the Trafalgar Road streetscape.

A celebration of contemporary design and rich materiality, The Greenwich's sculptural silhouette, sophisticated sheen, sweeping terraces and spectacular vistas, ensure its future landmark architectural achievement within Uptown Oakville.

At The Greenwich you'll discover an impressive array of feature-filled suites, sophisticated amenities and the elevated lifestyle that Brant Haven is renowned for.

ARCH APPEAL

The Greenwich Condos commands a gateway position on Oakville's burgeoning north Trafalgar block. It's distinctive arched canopy entrance defines the private and secure entrance for residents and guests.

THE PRINCIPAL TRAFALGAR LOBBY ENTRANCE.

STANDOUT STREETScape

The Greenwich's street edge is defined by expansive double height glazing providing a compelling window into the soaring ground floor amenity spaces. Lush landscaping and plenty of fresh air spaces contribute to creating a true sense of place and lively street vibe.

WELCOME HOME

THE LUSH LANDSCAPING OF THE CENTRAL COURTYARD OFFERS AN OPPORTUNITY TO EFFORTLESSLY BRING NEIGHBOURS TOGETHER AND FOSTER COMMUNITY. STEP OUT AND YOU'RE JUST MOMENTS FROM THE OAKVILLE GREEN - A HUGE COMMUNITY PARK WITH BENCHES, PLAYGROUND, POND AND PLENTY OF CONNECTIONS TO OAKVILLE'S RENOWNED MULTI-USE TRAIL SYSTEM.

WILLIAM COLTSON AVENUE

A NEW PERSPECTIVE ON OAKVILLE

Your everyday journey begins here at the main courtyard entrance on Oakville's William Coltson Avenue. An exciting new addition to the visionary master planned Oakville neighbourhood, The Greenwich's main elevation is a stunning embrace of tiered terraces and a central landscaped courtyard.

This is where it all comes together.





GAME NIGHT IN

Take the time for indoor fun or outdoor pursuits.
The Greenwich offers the best of both worlds.



WEEK ENDS OUT



WARMLY WELCOMING

Principal Lobby and Co-working effortlessly flow from the moment you walk through the door, the Greenwich's welcoming arch motif continues in the lobby lounge with its sensuous curves and rich materiality curated for a seductive and luxurious feeling.

STRIKING FIRST IMPRESSIONS

The soaring double height reception area envelops residents and guests with bold proportions and striking designs. From the stunning feature walls, luxe swivel chairs, bespoke banquettes, artful lighting and stone clad reception plinth - every surface is strikingly sculptural and yet a comforting curve.

WORK SMART

The Greenwich's co-working space has high performance features, professional good looks and is perfect for today's work smart from home options. Collaborate at the communal table. Connect at the coffee bar. Cut the commute.



BY DAY COMFORTABLE WORK SPACE. COME EVENING, THE SPACE TRANSFORMS INTO A COMMUNAL ENTERTAINMENT HUB.

SEDUCTIVE SCREENING ROOM



DARK AND DRAMATIC

All amenity areas at The Greenwich are **designed with dramatic flair and aesthetic appeal.**

The Greenwich Media Lounge presents a seductive scene curated for stunning visual impact. A rich palette of dark tones, custom curved wood ceiling, book-matched marble fireplace surround, inviting furnishings, wet bar and cozy accents create an intimate private screening room to share with friends.

THE MEDIA LOUNGE IS AN IDEAL SETTING TO WATCH YOUR FAVOURITE SHOW, FILM, SPORTS OR SPECIAL EVENT. WITH A SERIES OF SLIDING WOOD PANELLED WALLS RESIDENTS CAN CLOSE THE SPACE FOR PRIVACY OR SLIDE WIDE OPEN FOR A CONTINUOUS FLOW INTO THE ADJOINING CO-WORKING OR SOCIAL LOUNGES.

HOST IN STYLE

Hosting friends and family for special occasions is effortlessly relaxing with the stunning catering kitchen, wet bar, cozy banquettes and dining table. Everything is considered for an inviting experience.



SOCIAL SPACES



Entertain in style with the Greenwich's Social and Dining Lounges. Designed exclusively for residents and their guests, these amenity spaces offers the perfect mix of high style entertaining and approachable relaxation.

From the moment of arrival, you and your guest will be transported to a private club feel. Lounge in curvy comfort of a swivel chair. Relax on the extra deep, plush and inviting furnishings. Cozy up with a book by the floor-to-ceiling fireplace. Enjoy cocktails at the conversation starter social banquette.

Day or night, this is an inspired setting to share with friends and family.

NEW YORK STYLE

MOVEMENT STUDIO

FITNESS FREEDOM

Shake up your fitness routine and awaken your senses and feelings of well-being at The Greenwich Condos Movement Studio. The ground level fitness club includes an array of state-of-the-art cardio and strength training equipment and flexible studio space.

Enjoy the convenience of direct access from the elevators to private lockers, refreshing water station and abundance of natural light from the double height window wall. The area is ideal for strength training and cardio.

The adjoining multi-purpose room offers a luxe ambiance with a custom glass and iron privacy screen, arched mirror, soft touch cork flooring and even a ballet barre.

THE MOVEMENT STUDIO WILL ENCOURAGE YOU TO PRACTICE MINDFUL YOGA, MEDITATION OR EVEN MODERN DANCE.

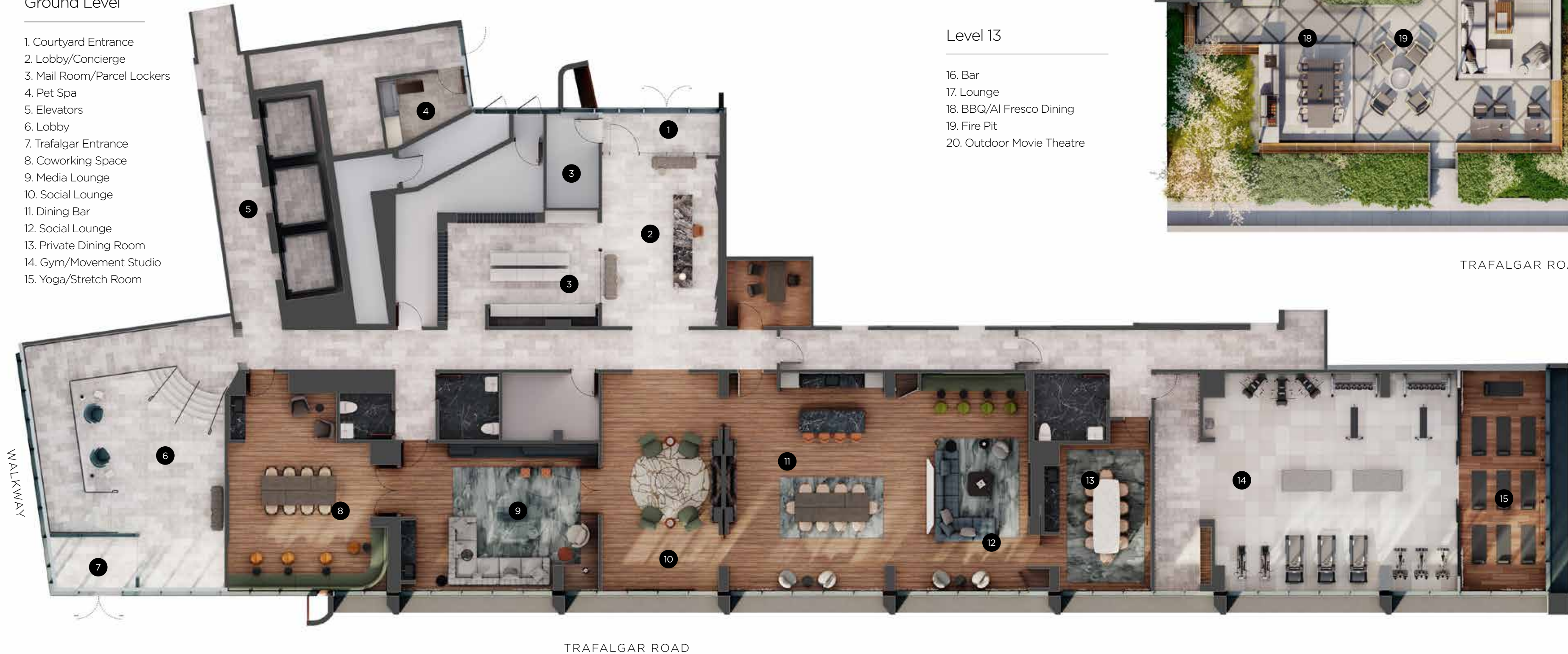


GET ENERGIZED

AMENITIES ABOUND

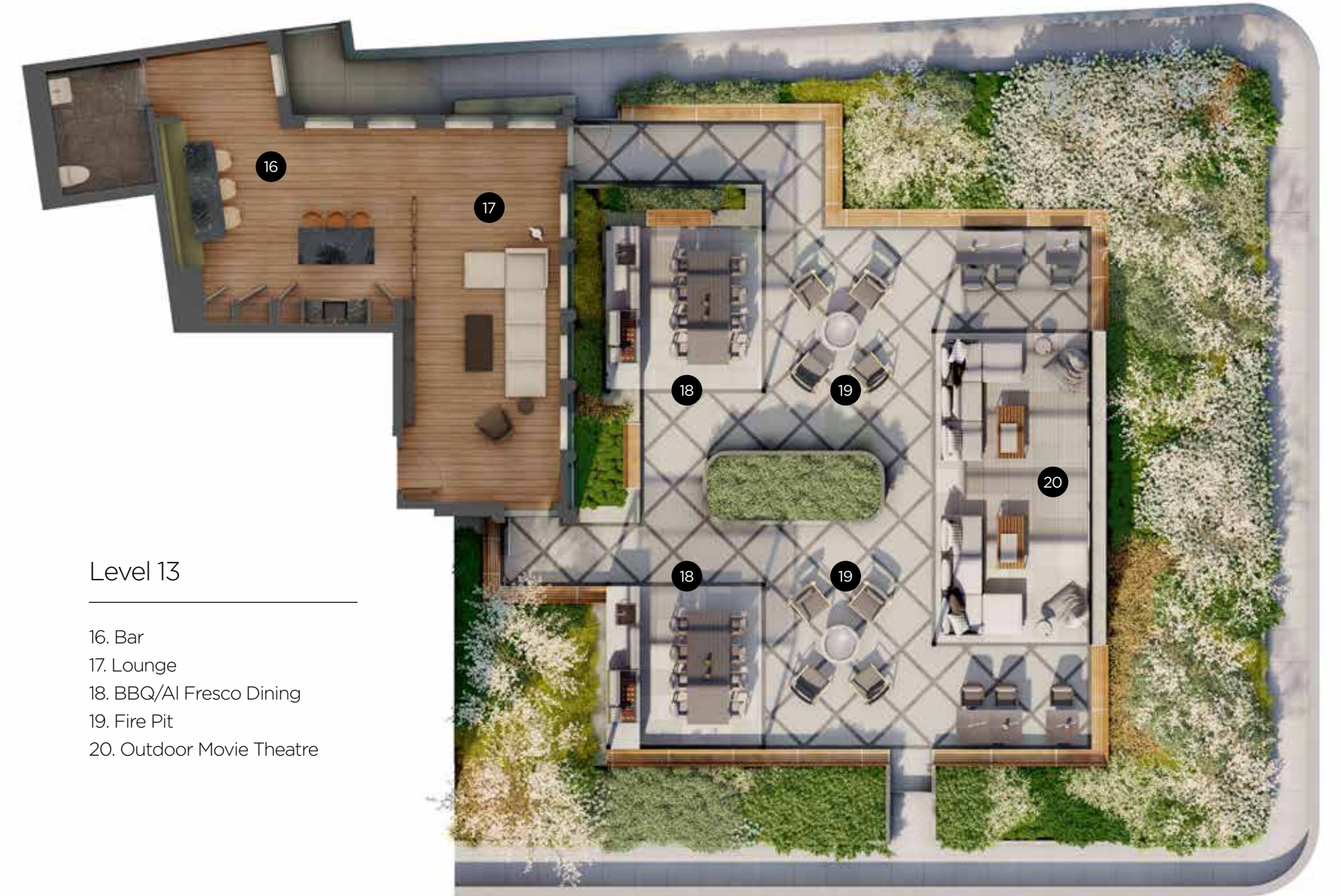
Ground Level

- 1. Courtyard Entrance
- 2. Lobby/Concierge
- 3. Mail Room/Parcel Lockers
- 4. Pet Spa
- 5. Elevators
- 6. Lobby
- 7. Trafalgar Entrance
- 8. Coworking Space
- 9. Media Lounge
- 10. Social Lounge
- 11. Dining Bar
- 12. Social Lounge
- 13. Private Dining Room
- 14. Gym/Movement Studio
- 15. Yoga/Stretch Room



Level 13

- 16. Bar
- 17. Lounge
- 18. BBQ/Al Fresco Dining
- 19. Fire Pit
- 20. Outdoor Movie Theatre



TRAFALGAR ROAD / WEST VIEW



ON THE BRIGHT SIDE

Suites have been designed to flow seamlessly with open concept living spaces, 9-foot ceiling heights, expansive windows and sweeping balconies to welcome light, air and stunning views.

BRANTHAVEN IS ALWAYS CONSIDERING THE ROLE OF DESIGN AND ITS RELATIONSHIP TO HOW WE LIVE AND EXPERIENCE OUR SURROUNDINGS. FUNCTION, FLOW AND NATURAL LIGHT ARE ALL CONSIDERED WHEN PLANNING SUITES. INTERIORS ARE ELEGANT TO LOOK AT, EASY TO FURNISH AND ENJOYABLE TO LIVE IN.

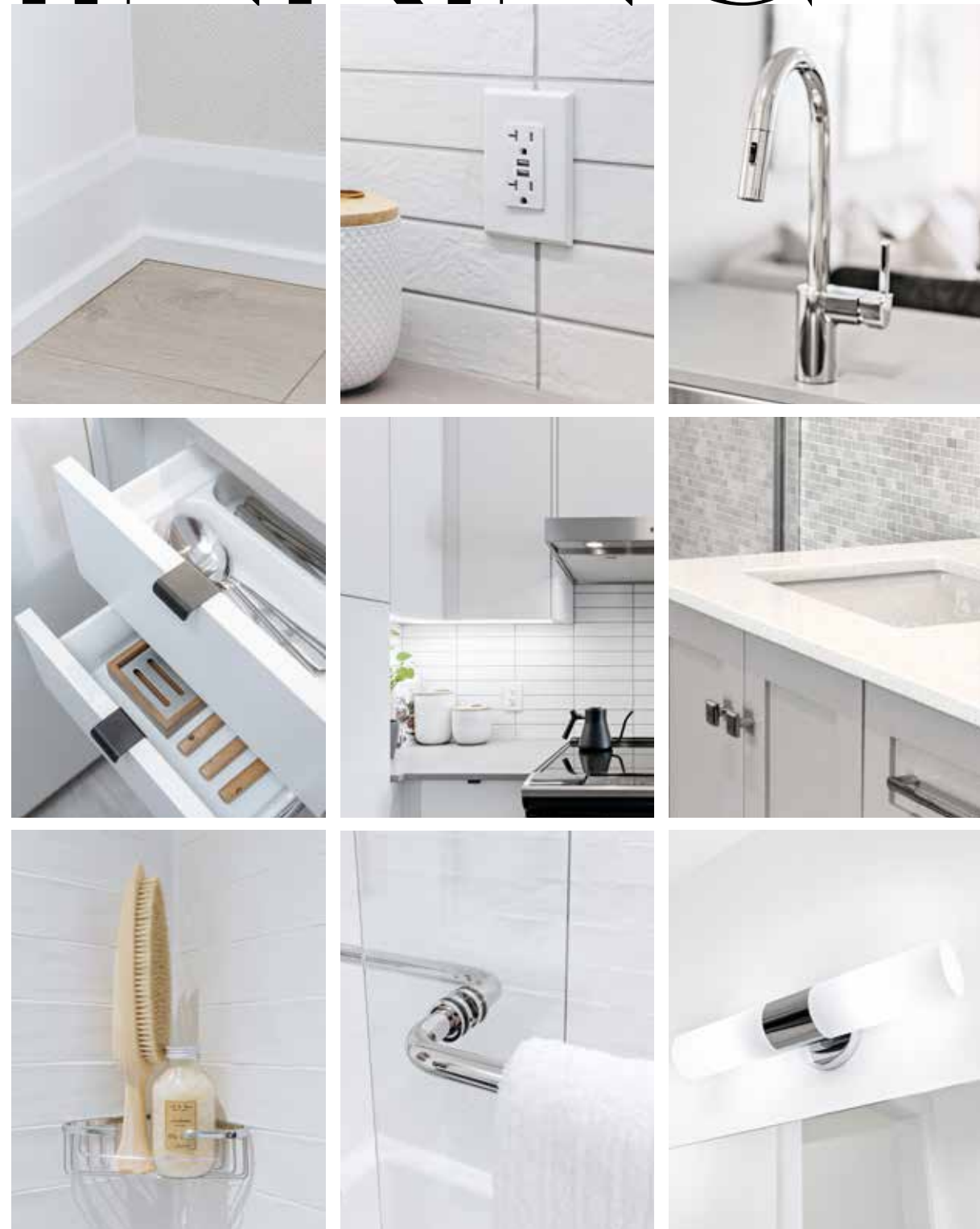
NEW. NOW. FRESH.

Escape the demands of everyday life with a **serene spa-like bathroom.**

Branthaven's Fresh Thinking™ fixtures and finishes provide a luxurious, modern ensuite for your ultimate relaxing refuge. From upgraded cabinetry, solid surface counters to stylish taps and designer tiles, everything has been considered for your enjoyment.



FRESH THINKING™



- Wide plank, wear resistant laminate flooring • Integrated USB charging port
- Contemporary Quartz solid-surface kitchen countertops from Branthaven's Caesarstone Collection
 - 3"x6" subway tile backsplash in coordinated palettes • 39" extended height upper cabinets
 - Deep drawers convenient for storing pots and small appliances • Moen 'Align' chrome finish, single lever high arc kitchen faucet & single handle vanity faucet in bathrooms
- Contemporary Chrome finish towel bar and paper holder • Modern vanity cabinet with storage drawers
 - Quartz countertop with undermount sink • Square edge vanity mirror • Designer wall mounted light fixture above mirror
 - Shower enclosure with semi-frameless glass sliding door and acrylic base
 - 4"x4" modern-style tile walls and ceiling pot light • Hotel-style chrome corner caddy in shower



Branthaven's Fresh Thinking™

BUILT-IN STANDARDS AT NO EXTRA COST. FROM COUNTERTOPS TO CABINETS, TAPS TO TILES, FLOORING TO FIXTURES, EXPERIENCE EVERLASTING STYLE WITH THESE EXCLUSIVE BRANTHAVEN STANDARDS. YOU'LL APPRECIATE THEM EACH AND EVERY DAY.

SAFE & SECURE

Your suite at The Greenwich comes outfitted with **BH Home Technology™** that allows you to access your smart home's technology functions anytime & from any place.



LOBBY ENTERPHONE

Communicate with visitors with live, one-way video from the lobby or parking garage.

SUITE SECURITY

Get notifications when your suite door is locked or unlocked.

IN-SUITE SYSTEM CONTROL TOUCH PAD

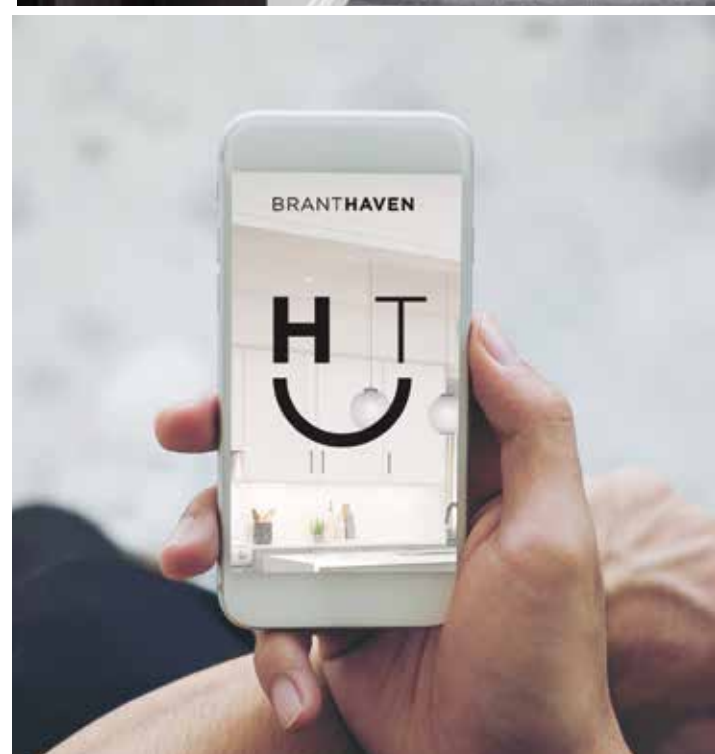
Your suite can be automatically set to arm the security system, adjust the thermostat to energy saving mode and power down non-essential lighting. (additional feature through supplier)

IN-SUITE INTELLIGENT PARTNER

There's more - your in-suite system also lets you receive notifications about the building, parcel delivery, book facilities, check suite manuals and even receive the weather forecast - all from your touch pad or smart phone app.

KEYLESS ENTRY

Your suite is equipped with a digital smart lock. Unlock with your own password or your smartphone. Create and manage custom access codes for service providers like your housecleaner or dog walker, visiting friends or family members.



DOWNLOAD THE SMARTPHONE APP TO MONITOR & CONTROL YOUR HOME FROM ANYWHERE IN THE WORLD.

SMART & GREEN

THE GREENWICH HAS HIGH PERFORMANCE AND FUTURE PROOFING ENVIRONMENTAL FEATURES YOU CAN FEEL GOOD ABOUT TODAY AND IN THE FUTURE.

BE GREEN

With geothermal heating and cooling, The Greenwich residents can feel good and can boast a 70% to 80% carbon reduction over a conventional building.

SMART SAVINGS

Investing in geothermal means lower long-term operating costs and reducing the exposure to future unpredictable energy, water and maintenance costs.

BUILDING RECYCLING

Branthaven is committed to creating cleaner, healthier and environmentally friendly building recycling programmes.

SMART LIGHTING IN HALLWAYS

The Greenwich has wayfinding comfort and smart features like motion lighting that is activated by movement. Illumination will increase as a person walks the corridor to their suite. Saving energy while adding better user-friendly experience.

ELECTRONIC VEHICLE CHARGING STATIONS

The Greenwich will be electric vehicle ready. Add the optional personal EV charging station in your parking spot for safe, easy and convenient recharge.

LICENSE PLATE RECOGNITION

Residents' license plates are automatically scanned to provide hands-free, secure underground parking garage access. You can share this feature to your guests by having their license plate pre-registered before their arrival.

UPTOWN OAKVILLE IS SOARING

THE GREENWICH IS ON THE UPPER WEST SIDE OF OAKVILLE,
BRANTHAVEN'S AWARD-WINNING, MASTER-PLANNED COMMUNITY.

Phase 1 is now complete with modern townhomes nestled amongst landscaped streets, 1.5 km of internal nature trails and a destination community pond. This is the setting for The Greenwich. A transformative new community bursting with parks, greenspaces, modern design and inspired architecture. Where young people and families want to put down roots. Here you'll find everything you want in a new home community right at your doorstep.



INTO THE WOODS
Explore the Oakville & Bronte forests



VILLAGE GREEN
The Heart of Oakville



HEALTH & WELLNESS
Oakville Trafalgar Memorial Hospital



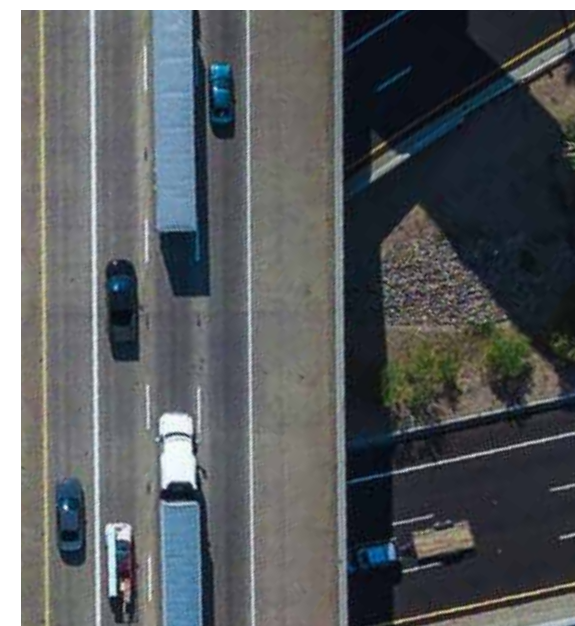
GET GO-ING
From the Oakville GO Station



SHERIDAN COLLEGE
State-of-the-art post-secondary institution



EVERYDAY ESSENTIALS
Longos, Superstore, Whole Foods



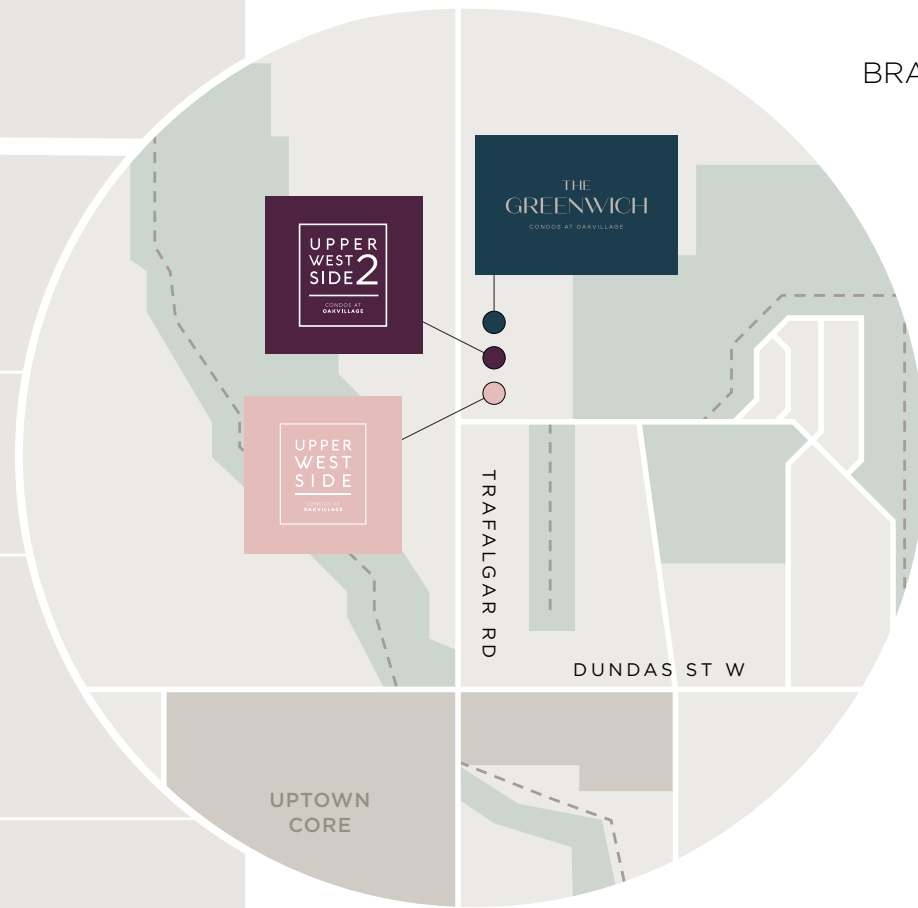
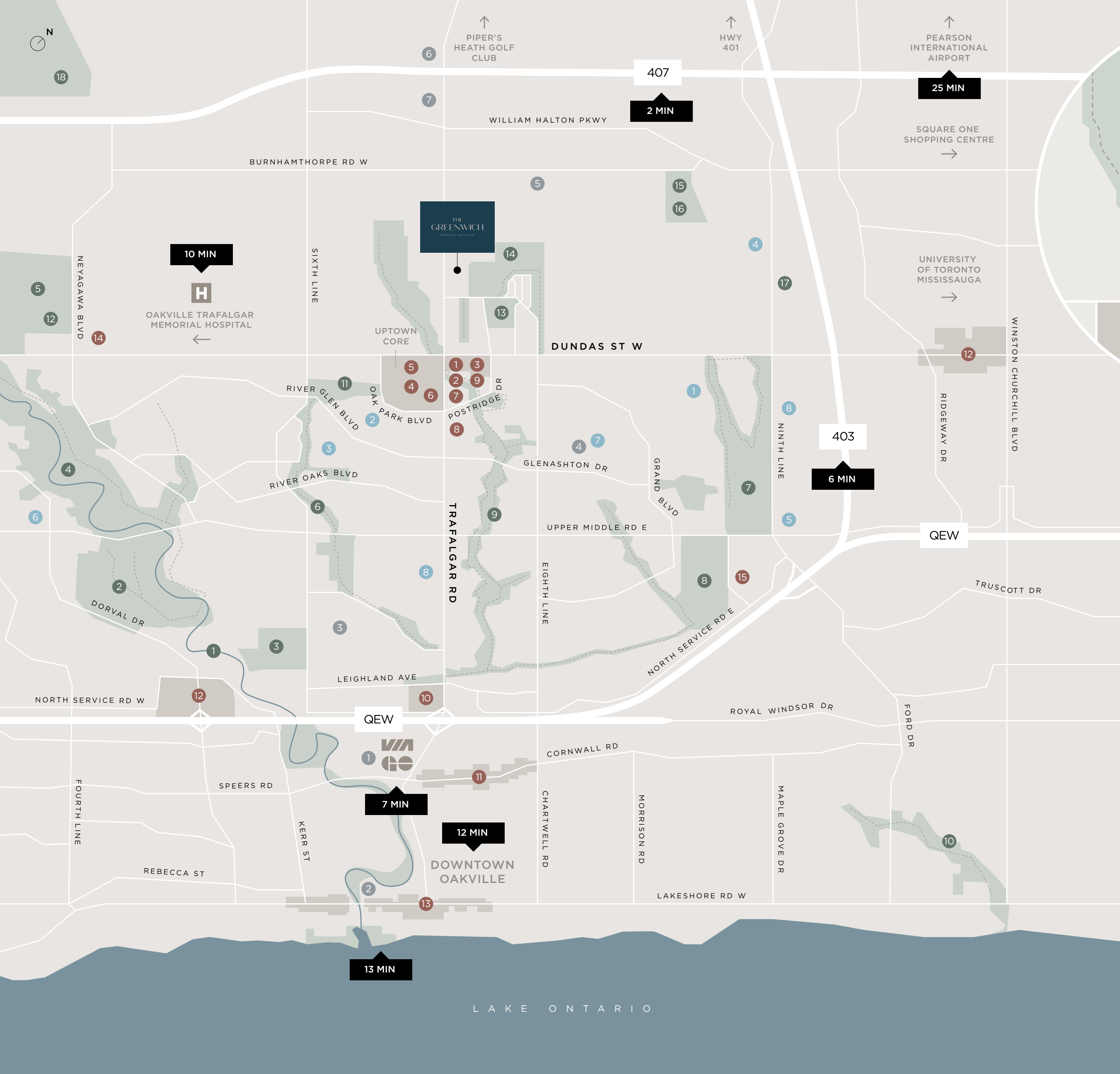
TRANSIT CONNECT
Close to Highways 403/407/401



LIVE ARTFULLY
Culture abounds at Oakville Galleries



INDOOR PLAY
Pools, courts, community centre



YOUR LOCAL OAKVILLE

- **PARKS & RECREATION**
 1. Sixteen Mile Creek
 2. Glen Abbey Golf Club
 3. Oakville Golf Club
 4. Lions Valley Park
 5. North Park
 6. Niipigon Trail
 7. The Parkway
 8. Iroquois Shoreline Woods Park
 9. Morrison Valley North/South
 10. Joshua Valley Park
 11. Oak Park & Dog Park
 12. Sixteen Mile Sports Complex
 13. William Rose Park
 14. Buttonbush Woods Park
 15. Joshua Creek Tennis
 16. Joshua Creek Golf
 17. The Tennis School
 18. Angels View Golf Course
- **RESTAURANTS/RETAIL**
 1. Longo's
 2. Starbucks
 3. Canadian Tire
 4. Walmart
 5. Real Canadian Superstore
 6. The Keg Steakhouse
 7. HomeSense
 8. Spoon & Fork
 9. Fionn MacCool's
 10. Oakville Place Mall
 11. Olde Oakville Marketplace
 12. Power Centres
 13. Downtown Oakville
 14. Fortinos
 15. Oakwoods Centre
- **POINTS OF INTEREST**
 1. Oakville GO Station / VIA Rail Oakville
 2. The Oakville Centre for the Performing Arts
 3. Oakville Public Library - White Oaks Branch
 4. Oakville Public Library - Iroquois Ridge Branch
 5. Joshua Creek Heritage Art Centre
 6. Trafalgar Car Pool
 7. 407 GO Oakville Car Pool Lot
 8. 5 Drive-In Movie Theatre
- **SCHOOLS**
 1. Joshua Creek Public School
 2. St. Andrew Catholic Elementary School
 3. Holy Trinity Catholic Secondary School
 4. Fern Hill School Oakville Campus
 5. Walden International School
 6. Glen Abbey Montessori School
 7. Iroquois Ridge High School
 8. Sheridan College Trafalgar Road Campus

**BEST
SHOPS**



Celebrate unrivalled quality of life. Year over year, Oakville is ranked as one of Canada's "Best Places to Live" Cultured, cosmopolitan and connected, Oakville is prized for its enviable lifestyle

Everything you want for a quality life is within reach from The Greenwich's convenient location. Old Oakville and the lakefront are nearby with an abundance of restaurants, shopping and social nightlife. Prestige schools, state-of-the-art community centres and the Oakville Trafalgar Memorial Hospital close at hand for all your wellness and educational needs. For commuters, Oakville Transit is at your door and there's easy access to the Oakville Trafalgar GO Train or Hwy's 403, 410 and the QEW.



**BEST
HEALTH CARE**

OAKVILLE IS SIMPLY THE BEST PLACE TO LIVE

**BEST
SCHOOLS**



**BEST
LIFE STYLE**

DISCOVER DOWNTOWN OAKVILLE



Anthropologie

STREET LIFE / Enjoy four seasons of festivals with friends

GOURMET FARE / Artisan cheese, organic veggies, bakeries and butchers

BISTRO BRUNCHES / Your choice of casual foods and flavour

DELICIOUS / A wide variety of fine dining and culinary delights

SPECIALITY SHOPS / Home décor, fashion, beauty and more

FASHIONISTA / High end tastes and tailor made too

GALLERIES GALORE / Experience the fine arts

PLAYS, PERFORMANCE / Exhibitions, concerts and live theatre

ICONIC PLACES / Meet you in the centre

SHORE THING / Waterfront parks, promenades and marinas



The Oakville Centre for the Performing Arts

Hexagon Restaurant



Stoney's Bread Company



Greenhouse Juice CO.



Waterfront Trails



Oakville Marina



Oakville Galleries



Civello Salon + Spa



Ricarda's Restaurant & Bakery



Yellow Door Studio





BRANTHAVEN



BRANTHAVEN IS A FAMILY-OWNED COMPANY CELEBRATING 50 YEARS OF HOMEBUILDING EXCELLENCE

Founded in Burlington in 1971, Branthaven is proud to continue our legacy of inspired homebuilding in Oakville with The Greenwich. We are committed to re-imagining the new home industry with our design forward, high quality homes that offer an exceptional lifestyle to those who live in them and enhanced value to the communities in which they belong. Our ongoing commitment has never wavered. We will continue our mission, to craft communities and build homes you're proud to call home.



BRANTHAVEN



Crafted For You. Built By Branthaven. | [Branthaven.com](https://branthaven.com)

All renderings are artist's concept. Sizes, materials and specifications are subject to change without notice. E.&O.E.