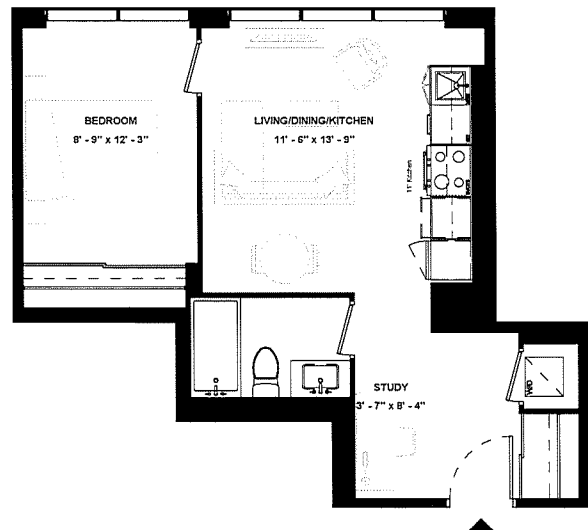


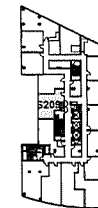
SUITE 209



SUITE TYPE: 1B+STUDY
SUITE AREA: 545 SQFT
BALCONY / TERRACE: N/A SQFT



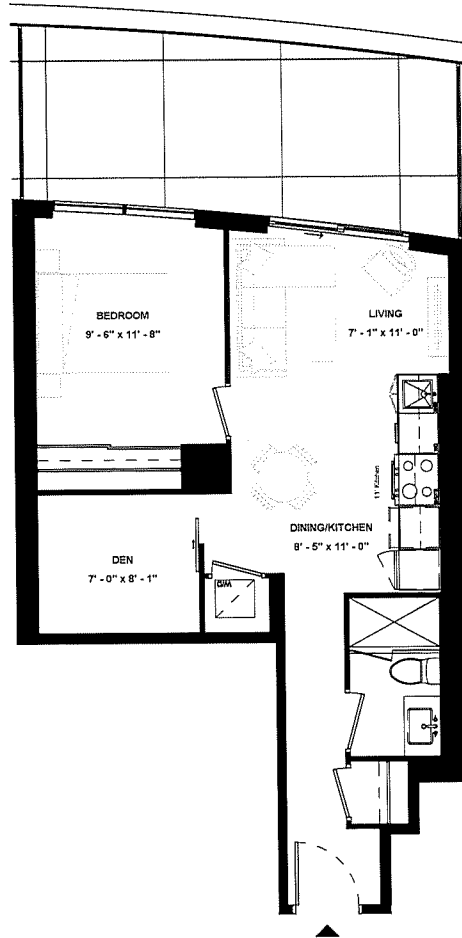
ISSUE DATE: 2023/06/02



LEVEL 02

Disclaimer: Drawings are not to scale. Materials, specifications, & floor plans are subject to change without notice. All renderings are artist's conceptions. All areas and stated room dimensions are approximate. Actual usable floor space may vary from the stated floor area. Floor area measured in accordance with Home Construction Regulatory Authority Directive, E.&O.E. Balcony sizes and configurations vary depending on floor level locations.

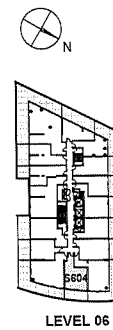
SUITE 604



SUITE TYPE: 1B+D
SUITE AREA: 578 SQFT
BALCONY / TERRACE: 187 SQFT

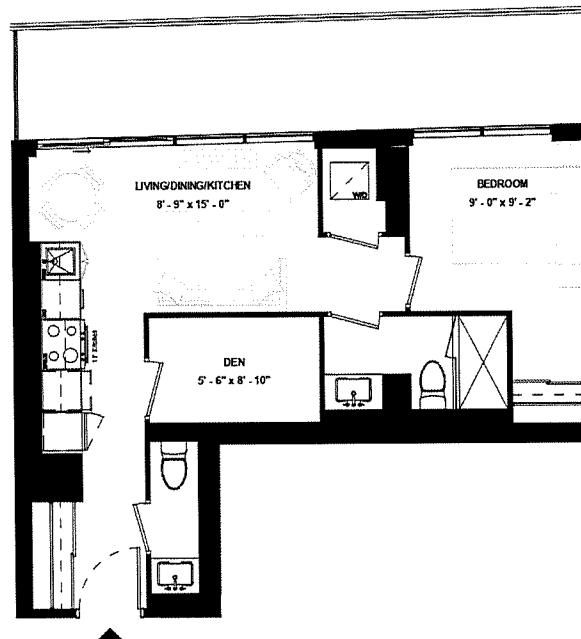


ISSUE DATE: 2023/06/02

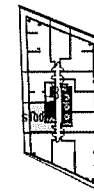


Disclaimer: Drawings are not to scale. Materials, specifications, & floor plans are subject to change without notice. All renderings are artist's conceptions. All areas and stated room dimensions are approximate. Actual usable floor space may vary from the stated floor area. Floor area measured in accordance with Home Construction Regulatory Authority Directive. E.&O.E. Balcony sizes and configurations vary depending on floor level locations.

SUITE 1005



SUITE TYPE: 1B+D
SUITE AREA: 578 SQFT
BALCONY / TERRACE: 163 SQFT



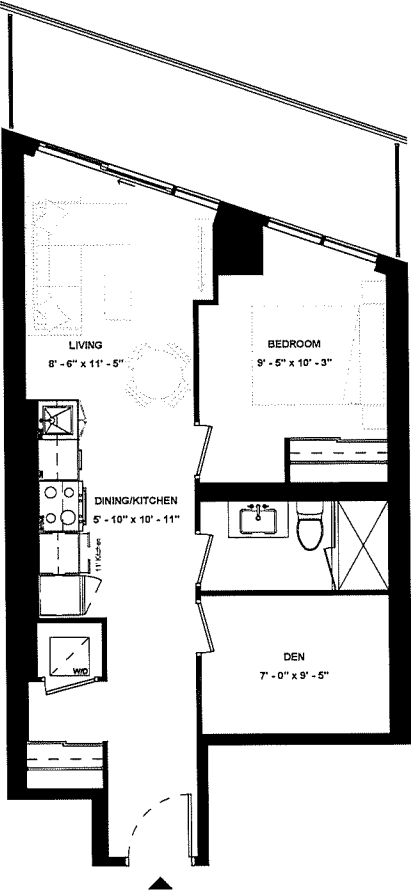
LEVEL 10



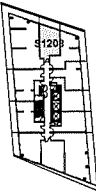
ISSUE DATE: 2023/06/02

Disclaimer: Drawings are not to scale. Materials, specifications, & floor plans are subject to change without notice. All renderings are artist's conceptions. All areas and stated room dimensions are approximate. Actual usable floor space may vary from the stated floor area. Floor area measured in accordance with Home Construction Regulatory Authority Directive. E.&O.E. Balcony sizes and configurations vary depending on floor level locations.

SUITE 1208



SUITE TYPE: 1B+D
 SUITE AREA: 582 SQFT
 BALCONY / TERRACE: 113 SQFT



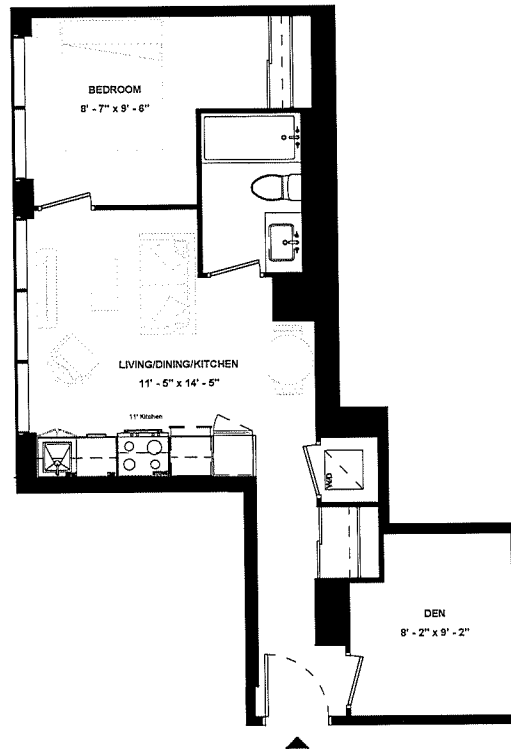
LEVEL 12

ISSUE DATE: 2023/06/02

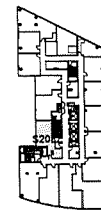


Disclaimer: Drawings are not to scale. Materials, specifications, & floor plans are subject to change without notice. All renderings are artist's conceptions. All areas and stated room dimensions are approximate. Actual usable floor space may vary from the stated floor area. Floor area measured in accordance with Home Construction Regulatory Authority Directive. E.&O.E. Balcony sizes and configurations vary depending on floor level locations.

SUITE 208



SUITE TYPE: 1B+D
SUITE AREA: 583 SQFT
BALCONY / TERRACE: N/A SQFT



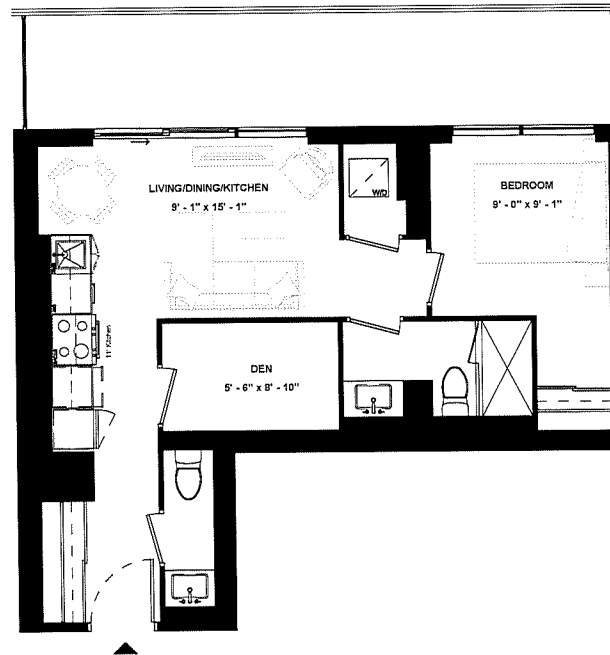
LEVEL 02



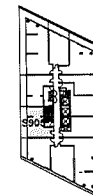
ISSUE DATE: 2023/06/02

Disclaimer: Drawings are not to scale. Materials, specifications, & floor plans are subject to change without notice. All renderings are artist's conceptions. All areas and stated room dimensions are approximate. Actual usable floor space may vary from the stated floor area. Floor area measured in accordance with Home Construction Regulatory Authority Directive. E.&O.E. Balcony sizes and configurations vary depending on floor level locations.

SUITE 905



SUITE TYPE: 1B+D
SUITE AREA: 584 SQFT
BALCONY / TERRACE: 163 SQFT



LEVEL 09

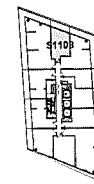
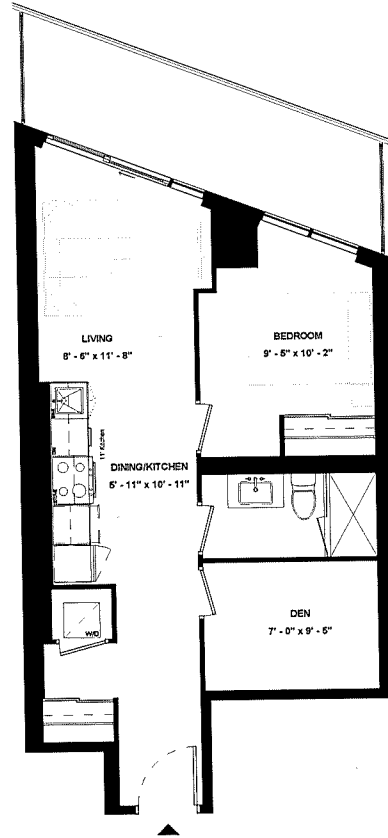


ISSUE DATE: 2023/06/02

Disclaimer: Drawings are not to scale. Materials, specifications, & floor plans are subject to change without notice. All renderings are artist's conceptions. All areas and related room dimensions are approximate. Actual usable floor space may vary from the stated floor area. Floor area measured in accordance with Home Construction Regulatory Authority Directive, E.&O.E. Balcony sizes and configurations vary depending on floor level locations.

SUITE 1108

SUITE TYPE: 1B+D
SUITE AREA: 584 SQFT
BALCONY / TERRACE: 114 SQFT



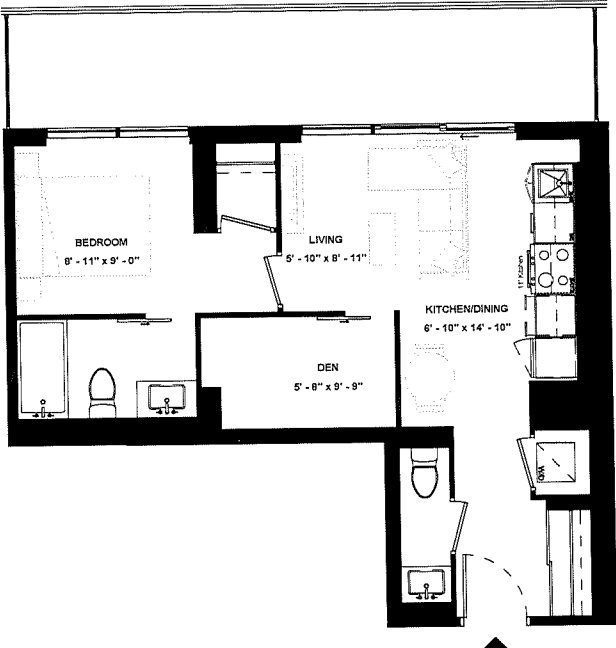
LEVEL 11

ISSUE DATE: 2023/06/02



Disclaimer: Drawings are not to scale. Materials, specifications, & floor plans are subject to change without notice. All renderings are artist's conceptions. All areas and stated room dimensions are approximate. Actual usable floor space may vary from the stated floor area. Floor area measured in accordance with Home Construction Regulatory Authority Directive, E.&O.E. Balcony sizes and configurations vary depending on floor level locations.

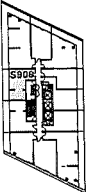
SUITE 906



SUITE TYPE: 1B+D
 SUITE AREA: 585 SQFT
 BALCONY / TERRACE: 163 SQFT



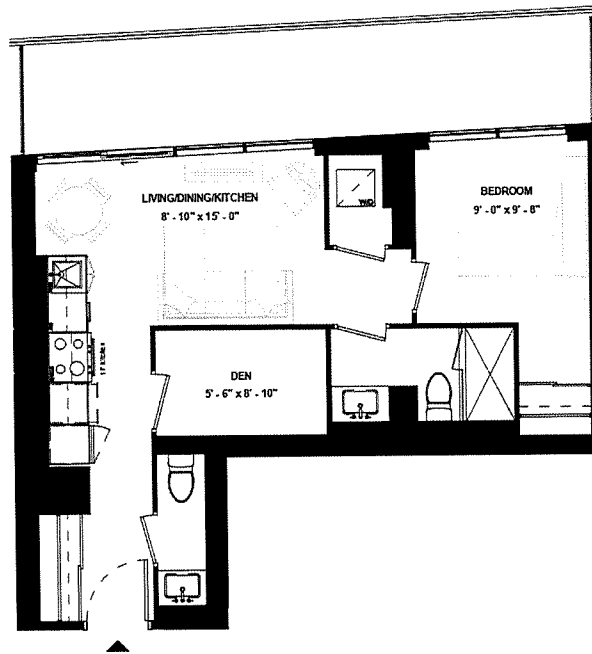
ISSUE DATE: 2023/06/02



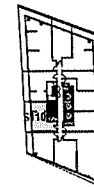
LEVEL 09

Disclaimer: Drawings are not to scale. Materials, specifications, & floor plans are subject to change without notice. All renderings are artist's conceptions. All areas and stated room dimensions are approximate. Actual usable floor space may vary from the stated floor area. Floor area measured in accordance with Home Construction Regulatory Authority Directive, E.&O.E. Balcony sizes and configurations vary depending on floor level locations.

SUITE 1105



SUITE TYPE: 1B+D
SUITE AREA: 587 SQFT
BALCONY / TERRACE: 163 SQFT



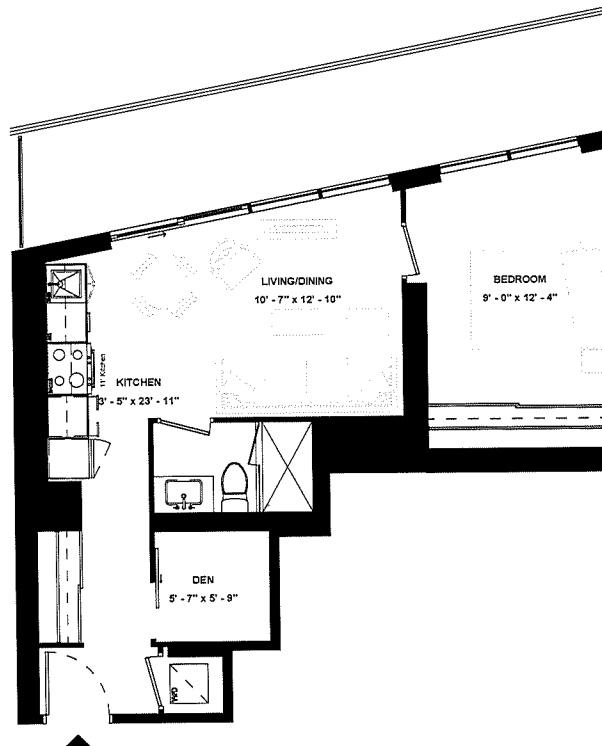
LEVEL 11



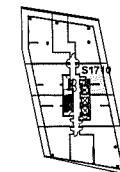
ISSUE DATE: 2023/06/02

Disclaimer: Drawings are not to scale. Materials, specifications, & floor plans are subject to change without notice. All renderings are artist's conceptions. All areas and stated room dimensions are approximate. Actual usable floor space may vary from the stated floor area. Floor area measured in accordance with Home Construction Regulatory Authority Directive, E.S.O.E. Balcony sizes and configurations vary depending on floor level locations.

SUITE 1710



SUITE TYPE: 1B+D
SUITE AREA: 587 SQFT
BALCONY / TERRACE: 166 SQFT



LEVEL 17

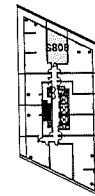
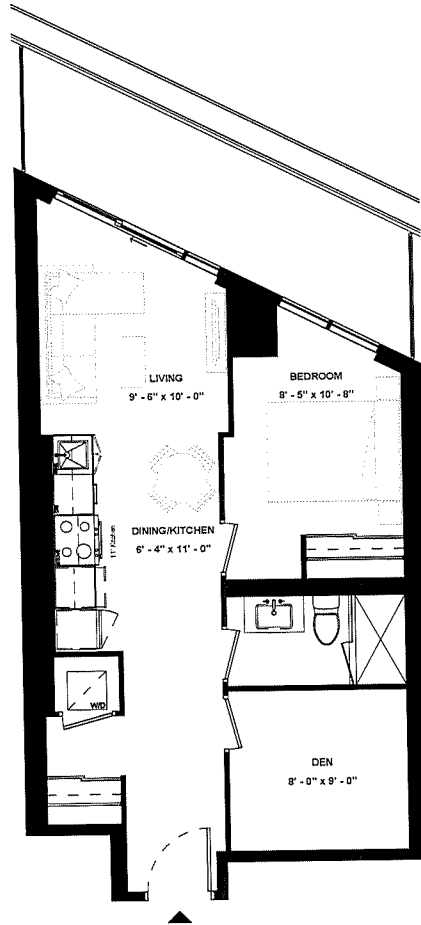


ISSUE DATE: 2023/06/02

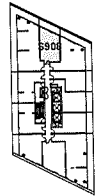
Disclaimer: Drawings are not to scale. Materials, specifications, & floor plans are subject to change without notice. All renderings are artist's conceptions. All areas and stated room dimensions are approximate. Actual usable floor space may vary from the stated floor area. Floor area measured in accordance with Home Construction Regulatory Authority Directive, E.&O.E. Balcony sizes and configurations vary depending on floor level locations.

SUITE 808 & SUITE 908

SUITE TYPE: 1B+D
 SUITE AREA: 588 SQFT
 BALCONY / TERRACE: 120 SQFT



LEVEL 08



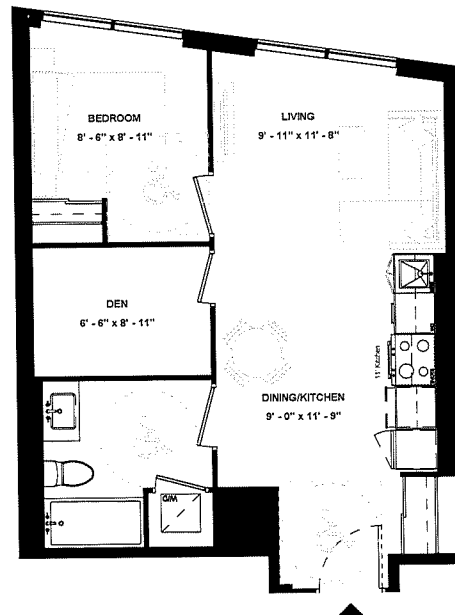
LEVEL 09

ISSUE DATE: 2023/06/02

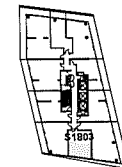


Disclaimer: Drawings are not to scale. Materials, specifications, & floor plans are subject to change without notice. All renderings are artist's conceptions. All areas and stated room dimensions are approximate. Actual usable floor space may vary from the stated floor area. Floor area measured in accordance with Home Construction Regulatory Authority Directive. E.&O.E. Balcony sizes and configurations vary depending on floor level locations.

SUITE 1803



SUITE TYPE: 1B+D (BF)
SUITE AREA: 593 SQFT
BALCONY / TERRACE: N/A SQFT



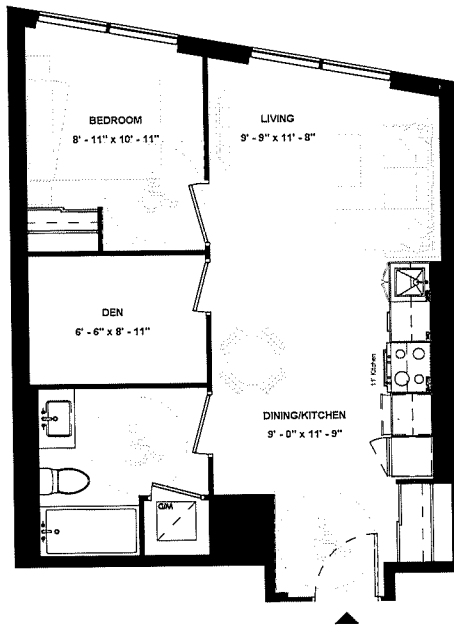
LEVEL 18



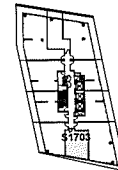
ISSUE DATE: 2023/06/02

Disclaimer: Drawings are not to scale. Materials, specifications, & floor plans are subject to change without notice. All renderings are artist's conceptions. All areas and stated room dimensions are approximate. Actual usable floor space may vary from the stated floor area. Floor area measured in accordance with Home Construction Regulatory Authority Directive, E.4.0.E. Balcony sizes and configurations vary depending on floor level locations.

SUITE 1703



SUITE TYPE: 1B+D (BF)
SUITE AREA: 593 SQFT
BALCONY / TERRACE: N/A



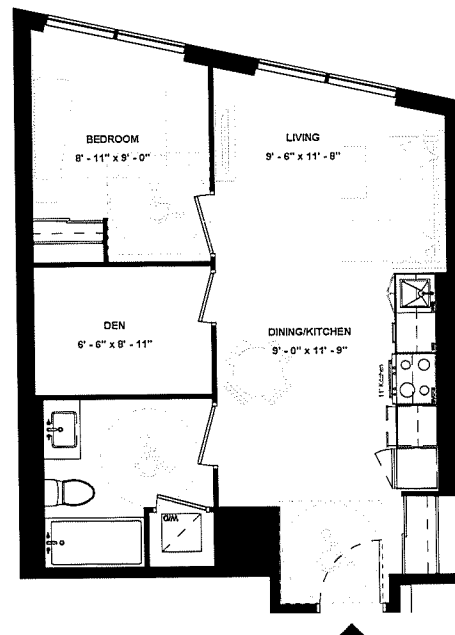
LEVEL 17

ISSUE DATE: 2023/06/02

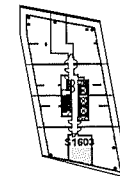


Disclaimer: Drawings are not to scale. Materials, specifications, & floor plans are subject to change without notice. All renderings are artist's conceptions. All areas and stated room dimensions are approximate. Actual usable floor space may vary from the stated floor area. Floor area measured in accordance with Home Construction Regulatory Authority Directive. E.&O.E. Balcony sizes and configurations vary depending on floor level locations.

SUITE 1603



SUITE TYPE: 1B+D (BF)
SUITE AREA: 594 SQFT
BALCONY / TERRACE: N/A SQFT



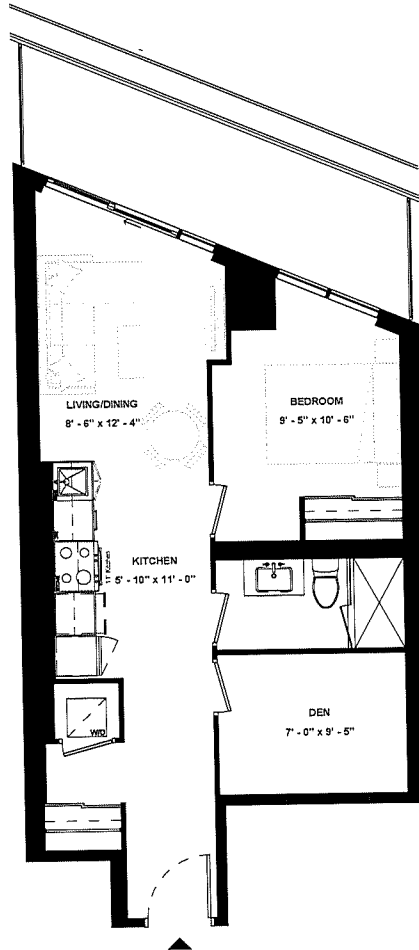
LEVEL 16



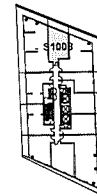
ISSUE DATE: 2023/06/02

Disclaimer: Drawings are not to scale. Materials, specifications, & floor plans are subject to change without notice. All renderings are artist's conceptions. All areas and stated room dimensions are approximate. Actual usable floor space may vary from the stated floor area. Floor area measured in accordance with Home Construction Regulatory Authority Directive, E.&O.E. Balcony sizes and configurations vary depending on floor level locations.

SUITE 1008



SUITE TYPE: 1B+D
SUITE AREA: 594 SQFT
BALCONY / TERRACE: 116 SQFT



LEVEL 10

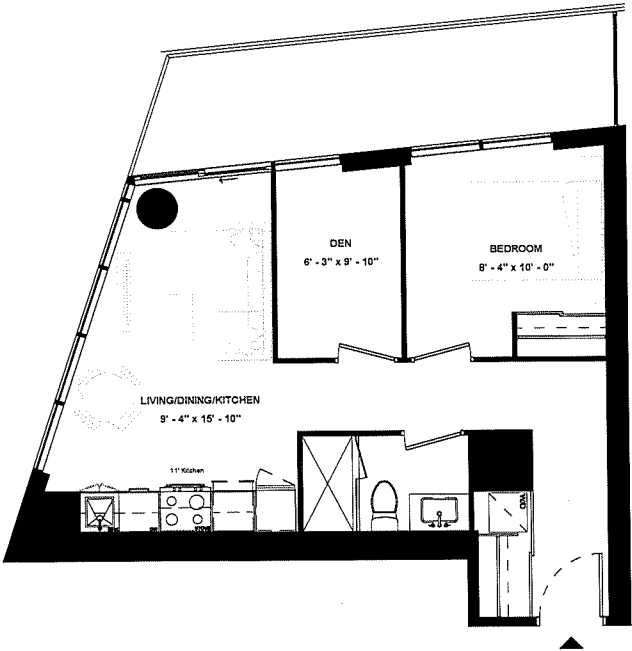
ISSUE DATE: 2023/06/02



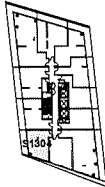
HARHAY
DEVELOPMENTS

Disclaimer: Drawings are not to scale. Materials, specifications, & floor plans are subject to change without notice. All renderings are artist's conceptions. All areas and stated room dimensions are approximate. Actual usable floor space may vary from the stated floor area. Floor area measured in accordance with Home Construction Regulatory Authority Directive, E.&O.E. Balcony sizes and configurations vary depending on floor level locations.

SUITE 1304



SUITE TYPE: 1B+D
SUITE AREA: 595 SQFT
BALCONY / TERRACE: 129 SQFT



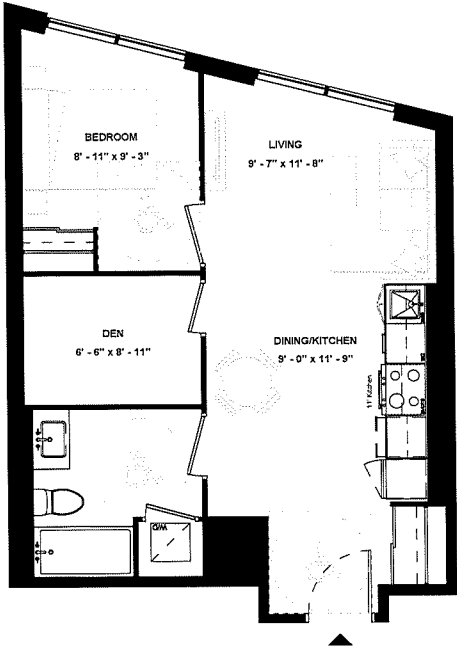
LEVEL 13



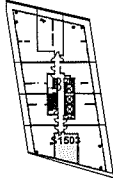
ISSUE DATE: 2023/06/02

Disclaimer: Drawings are not to scale. Materials, specifications, & floor plans are subject to change without notice. All renderings are artist's conceptions. All areas and stated room dimensions are approximate. Actual usable floor space may vary from the stated floor area. Floor area measured in accordance with Home Construction Regulatory Authority Directive, E.&O.E. Balcony sizes and configurations vary depending on floor level locations.

SUITE 1503



SUITE TYPE: 1B+D (BF)
 SUITE AREA: 597 SQFT
 BALCONY / TERRACE: N/A SQFT



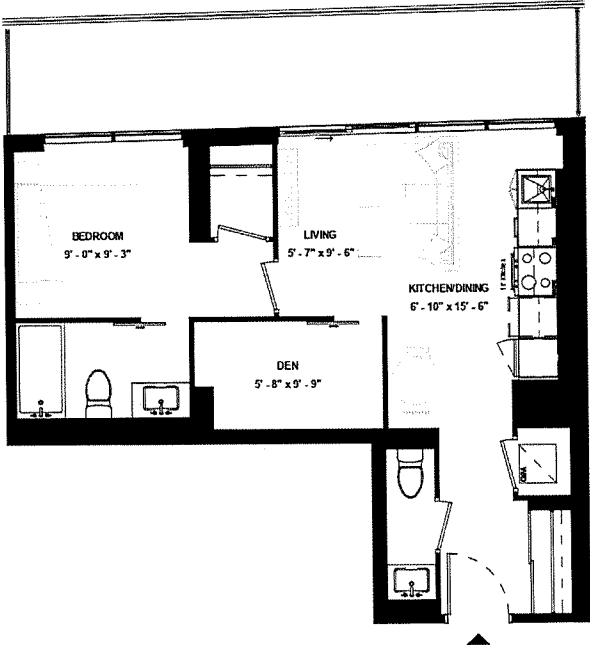
LEVEL 15

ISSUE DATE: 2023/06/02

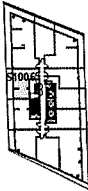


Disclaimer: Drawings are not to scale. Materials, specifications, & floor plans are subject to change without notice. All renderings are artist's conceptions. All areas and stated room dimensions are approximate. Actual usable floor space may vary from the stated floor area. Floor area measured in accordance with Home Construction Regulatory Authority Directive. E.&O.E. Balcony sizes and configurations vary depending on floor level locations.

SUITE 1006



SUITE TYPE: 1B+D
SUITE AREA: 600 SQFT
BALCONY / TERRACE: 163 SQFT



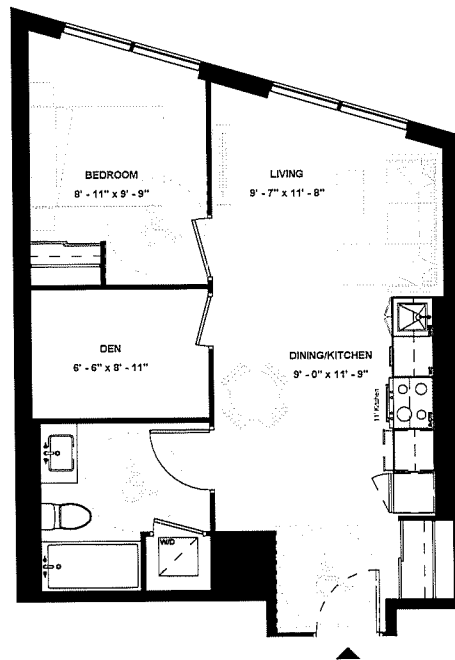
LEVEL 10



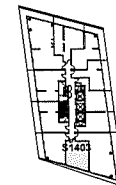
ISSUE DATE: 2023/06/02

Disclaimer: Drawings are not to scale. Materials, specifications, & floor plans are subject to change without notice. All renderings are artist's conceptions. All areas and stated room dimensions are approximate. Actual usable floor space may vary from the stated floor area. Floor area measured in accordance with Home Construction Regulatory Authority Directive, E.S.O.E. Balcony sizes and configurations vary depending on floor level locations.

SUITE 1403



SUITE TYPE: 1B+D (BF)
SUITE AREA: 602 SQFT
BALCONY / TERRACE: N/A



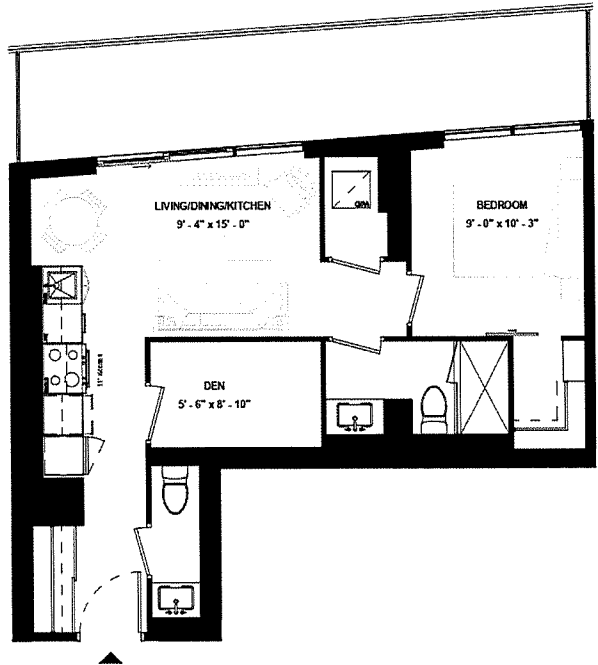
LEVEL 14

ISSUE DATE: 2023/06/02

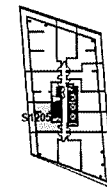


Disclaimer: Drawings are not to scale. Materials, specifications, & floor plans are subject to change without notice. All renderings are artist's conceptions. All areas and stated room dimensions are approximate. Actual usable floor space may vary from the stated floor area. Floor area measured in accordance with Home Construction Regulatory Authority Directive. E.&O.E. Balcony sizes and configurations vary depending on floor level locations.

SUITE 1205



SUITE TYPE: 1B+D
SUITE AREA: 602 SQFT
BALCONY / TERRACE: 164 SQFT



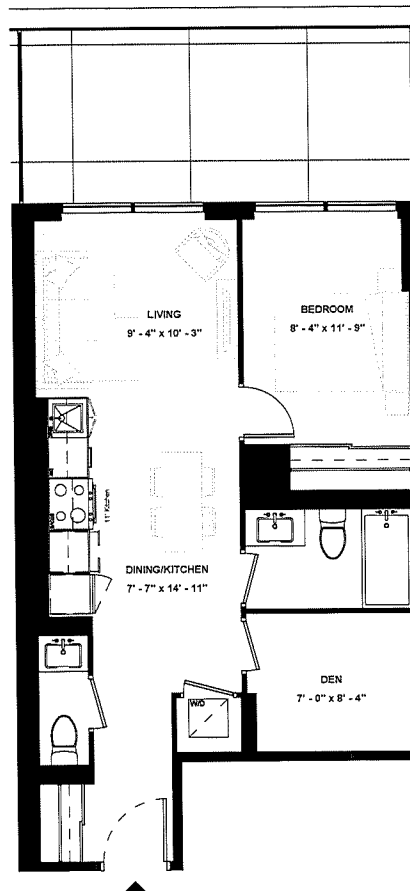
LEVEL 12

ISSUE DATE: 2023/06/02

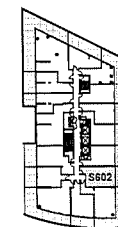


Disclaimer: Drawings are not to scale. Materials, specifications, & floor plans are subject to change without notice. All renderings are artist's conceptions. All areas and stated room dimensions are approximate. Actual usable floor space may vary from the stated floor area. Floor area measured in accordance with Home Construction Regulatory Authority Directive, E.80 E. Balcony sizes and configurations vary depending on floor level locations.

SUITE 602



SUITE TYPE: 1B+D
SUITE AREA: 603 SQFT
BALCONY / TERRACE: 167 SQFT



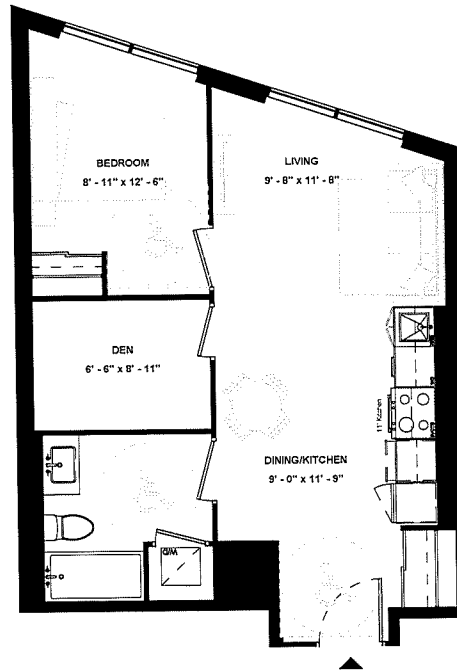
LEVEL 06

ISSUE DATE: 2023/06/02

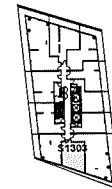


Disclaimer: Drawings are not to scale. Materials, specifications, & floor plans are subject to change without notice. All renderings are artist's conceptions. All areas and stated room dimensions are approximate. Actual usable floor space may vary from the stated floor area. Floor area measured in accordance with Home Construction Regulatory Authority Directive. E.&O.E. Balcony sizes and configurations vary depending on floor level locations.

SUITE 1303



SUITE TYPE: 1B+D (BF)
SUITE AREA: 607 SQFT
BALCONY / TERRACE: N/A



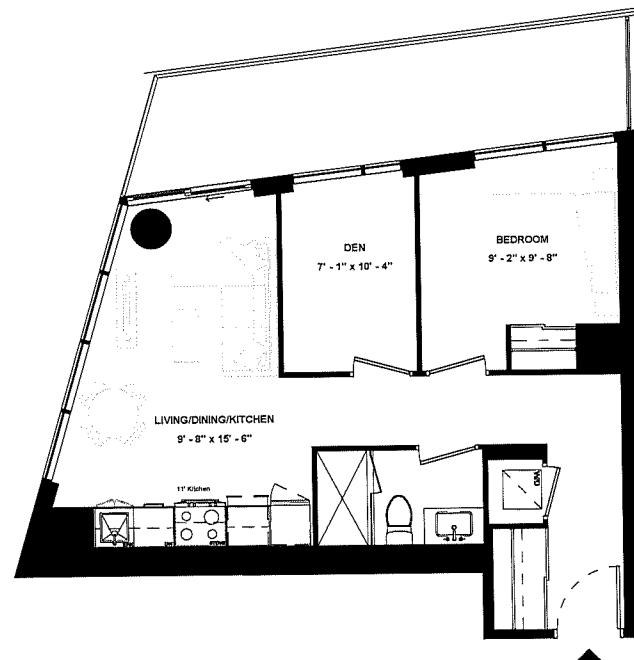
LEVEL 13

ISSUE DATE: 2023/06/02

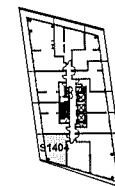


Disclaimer: Drawings are not to scale. Materials, specifications, & floor plans are subject to change without notice. All renderings are artist's conceptions. All areas and stated room dimensions are approximate. Actual usable floor space may vary from the stated floor area. Floor area measured in accordance with Home Construction Regulatory Authority Directive, E.&O.E. Balcony sizes and configurations vary depending on floor level locations.

SUITE 1404



SUITE TYPE: 1B+D
SUITE AREA: 608 SQFT
BALCONY / TERRACE: 135 SQFT



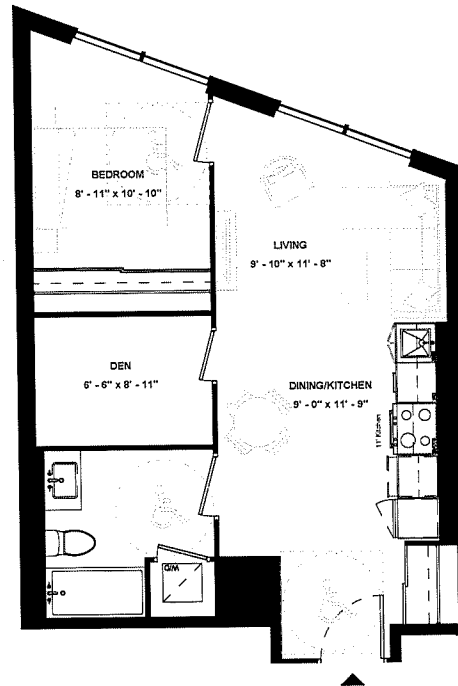
LEVEL 14



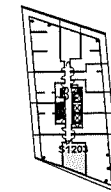
ISSUE DATE: 2023/06/02

Disclaimer: Drawings are not to scale. Materials, specifications, & floor plans are subject to change without notice. All renderings are artist's conceptions. All areas and stated room dimensions are approximate. Actual usable floor space may vary from the stated floor area. Floor area measured in accordance with Home Construction Regulatory Authority Directive, E.&O.E. Balcony sizes and configurations vary depending on floor level locations.

SUITE 1203



SUITE TYPE: 1B+D (BF)
SUITE AREA: 615 SQFT
BALCONY / TERRACE: N/A



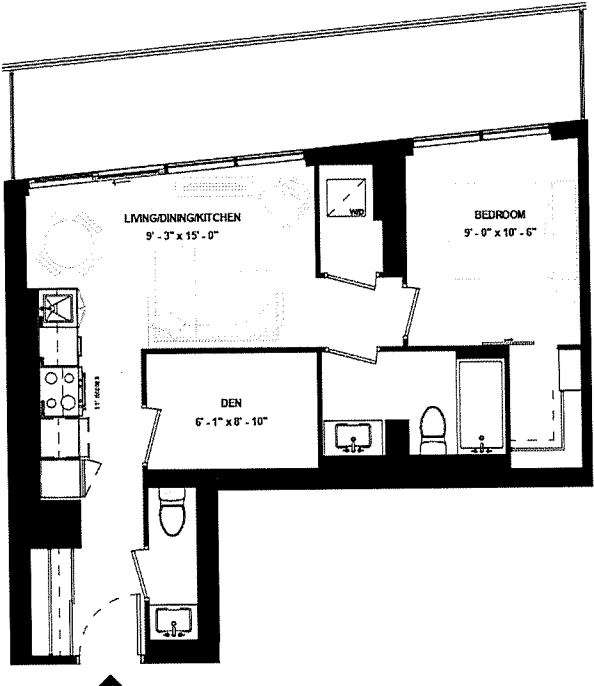
LEVEL 12

ISSUE DATE: 2023/06/02

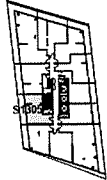


Disclaimer: Drawings are not to scale. Materials, specifications, & floor plans are subject to change without notice. All renderings are artist's conceptions. All areas and stated room dimensions are approximate. Actual usable floor space may vary from the stated floor area. Floor area measured in accordance with Home Construction Regulatory Authority Directive, E.&O.E. Balcony sizes and configurations vary depending on floor level locations.

SUITE 1305



SUITE TYPE: 1B+D
SUITE AREA: 621 SQFT
BALCONY / TERRACE: 164 SQFT



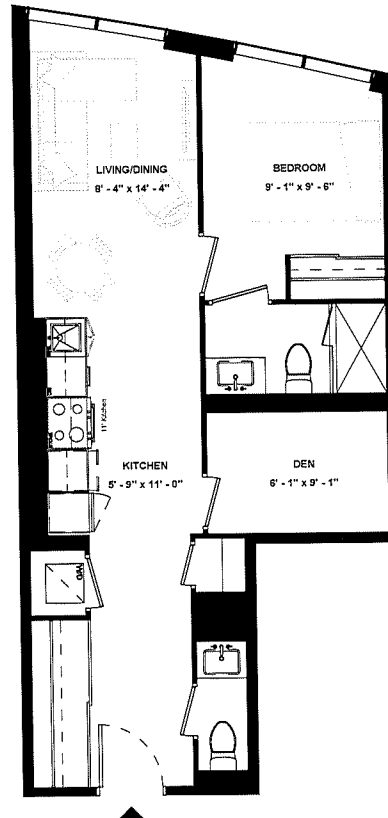
LEVEL 13



ISSUE DATE: 2023/06/02

Disclaimer: Drawings are not to scale. Materials, specifications, & floor plans are subject to change without notice. All renderings are artist's conceptions. All areas and stated room dimensions are approximate. Actual usable floor space may vary from the stated floor area. Floor area measured in accordance with Home Construction Regulatory Authority Directive, E.&O.E. Balcony sizes and configurations vary depending on floor level locations.

SUITE 206



SUITE TYPE: 1B+D
SUITE AREA: 624 SQFT
BALCONY / TERRACE: N/A SQFT



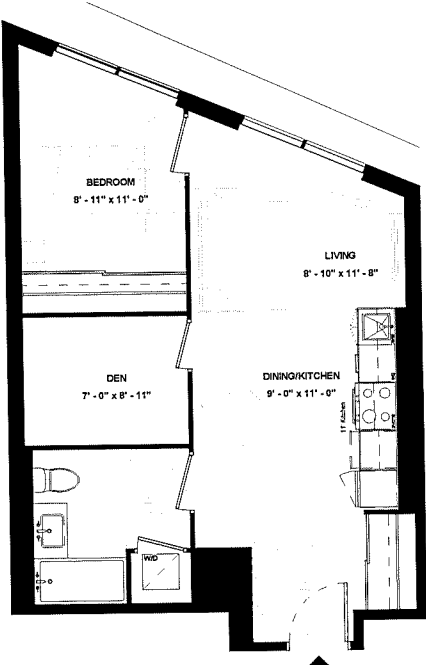
LEVEL 02

ISSUE DATE: 2023/06/02

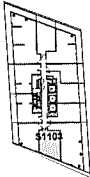


Disclaimer: Drawings are not to scale. Materials, specifications, & floor plans are subject to change without notice. All renderings are artist's conceptions. All areas and stated room dimensions are approximate. Actual usable floor space may vary from the stated floor area. Floor area measured in accordance with Home Construction Regulatory Authority Directive, E.&O.E. Balcony sizes and configurations vary depending on floor level locations.

SUITE 1103



SUITE TYPE: 1B+D (BF)
SUITE AREA: 624 SQFT
BALCONY / TERRACE: N/A



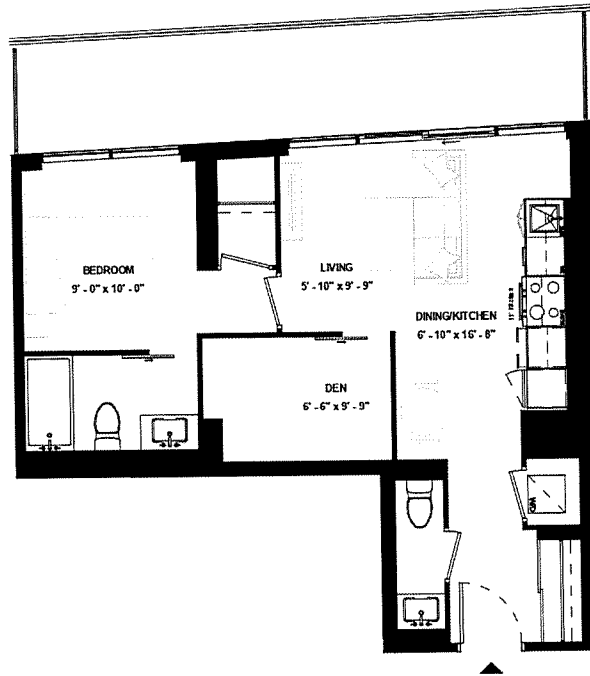
LEVEL 11

ISSUE DATE: 2023/06/02



Disclaimer: Drawings are not to scale. Materials, specifications, & floor plans are subject to change without notice. All renderings are artist's conceptions. All areas and stated room dimensions are approximate. Actual usable floor space may vary from the stated floor area. Floor area measured in accordance with Home Construction Regulatory Authority Directive, E.&O.E. Balcony sizes and configurations vary depending on floor level locations.

SUITE 1106



SUITE TYPE: 1B+D
SUITE AREA: 629 SQFT
BALCONY / TERRACE: 163 SQFT



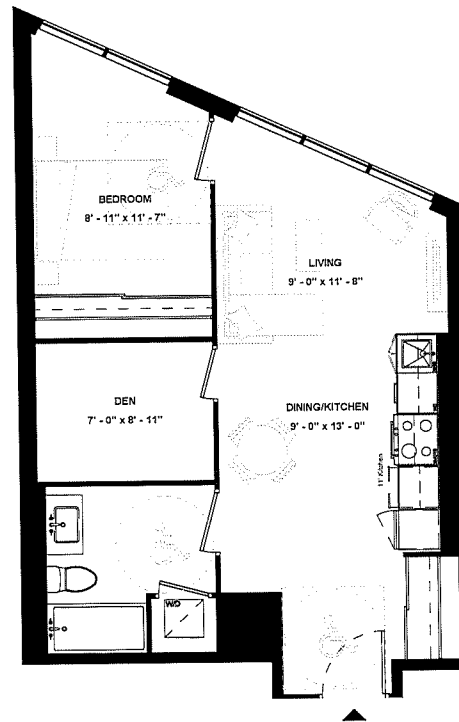
ISSUE DATE: 2023/06/02



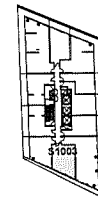
LEVEL 11

Disclaimer: Drawings are not to scale. Materials, specifications, & floor plans are subject to change without notice. All renderings are artist's conceptions. All areas and stated room dimensions are approximate. Actual usable floor space may vary from the stated floor area. Floor area measured in accordance with Home Construction Regulatory Authority Directive, E.&O.E. Balcony sizes and configurations vary depending on floor level locations.

SUITE 1003



SUITE TYPE: 1B+D (BF)
SUITE AREA: 633 SQFT
BALCONY / TERRACE: N/A



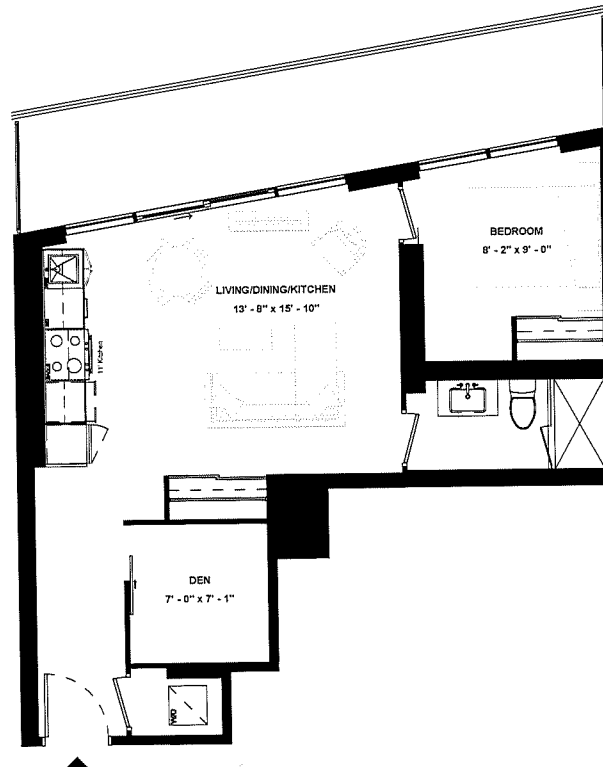
LEVEL 10

ISSUE DATE: 2023/06/02

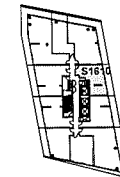


Disclaimer: Drawings are not to scale. Materials, specifications, & floor plans are subject to change without notice. All renderings are artist's conceptions. All areas and stated room dimensions are approximate. Actual usable floor space may vary from the stated floor area. Floor area measured in accordance with Home Construction Regulatory Authority Directive. E.&O.E. Balcony sizes and configurations vary depending on floor level locations.

SUITE 1610



SUITE TYPE: 1B+D
SUITE AREA: 634 SQFT
BALCONY / TERRACE: 166 SQFT



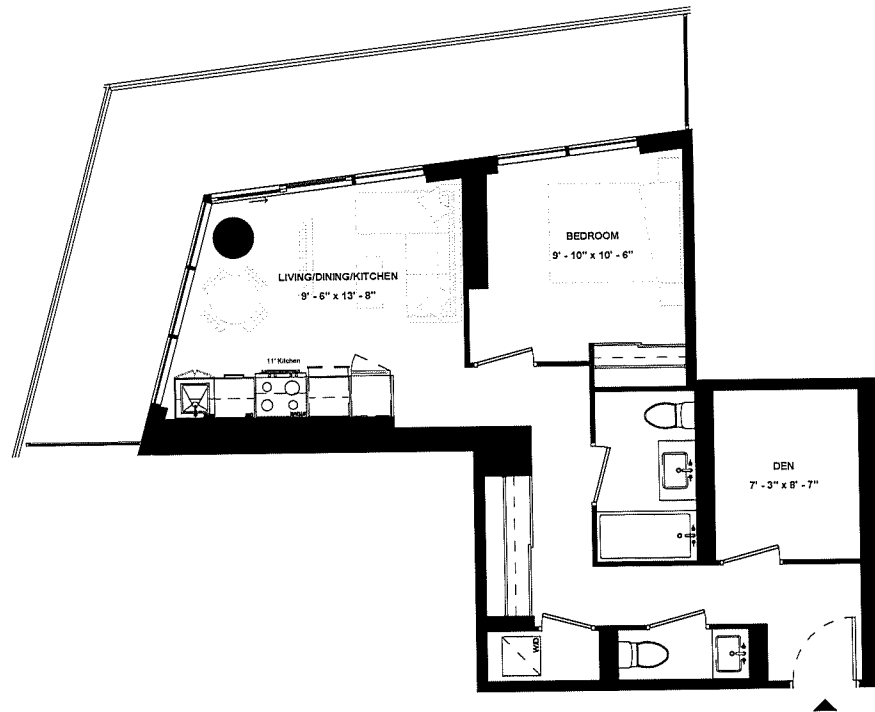
LEVEL 16



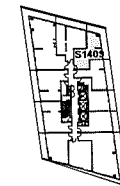
ISSUE DATE: 2023/06/02

Disclaimer: Drawings are not to scale. Materials, specifications, & floor plans are subject to change without notice. All renderings are artist's conceptions. All areas and stated room dimensions are approximate. Actual usable floor space may vary from the stated floor area. Floor area measured in accordance with Home Construction Regulatory Authority Directive. E.&O.E. Balcony sizes and configurations vary depending on floor level locations.

SUITE 1409



SUITE TYPE: 1B+D
SUITE AREA: 640 SQFT
BALCONY / TERRACE: 236 SQFT



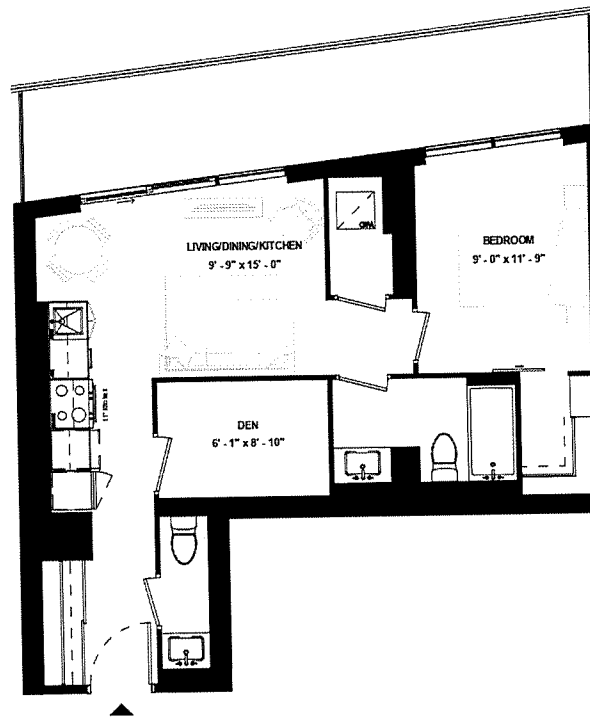
LEVEL 14



ISSUE DATE: 2023/06/02

Disclaimer: Drawings are not to scale. Materials, specifications, & floor plans are subject to change without notice. All renderings are artist's conceptions. All areas and related room dimensions are approximate. Actual usable floor space may vary from the stated floor area. Floor area measured in accordance with Home Construction Regulatory Authority Directive, E.&O.E. Balcony sizes and configurations vary depending on floor level locations.

SUITE 1405



SUITE TYPE: 1B+D
SUITE AREA: 645 SQFT
BALCONY / TERRACE: 163 SQFT



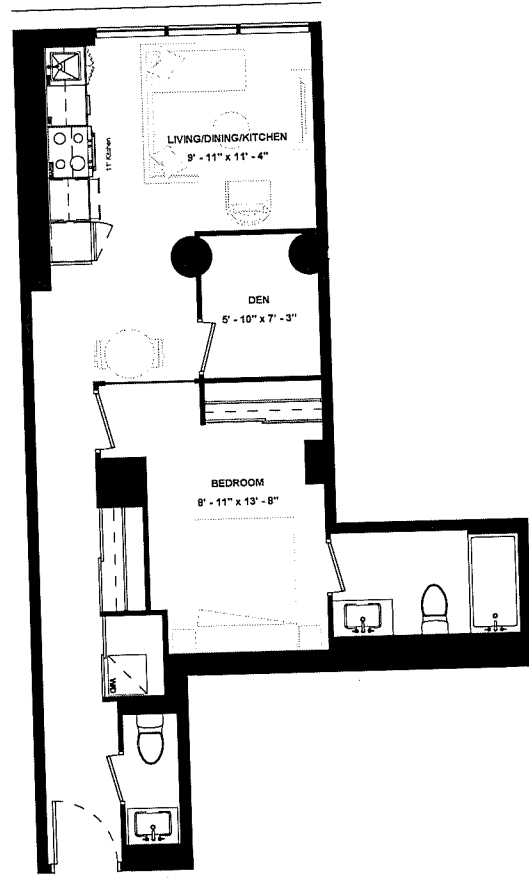
LEVEL 14



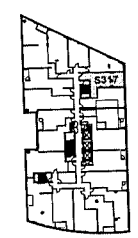
ISSUE DATE: 2023/06/02

Disclaimer: Drawings are not to scale. Materials, specifications, & floor plans are subject to change without notice. All renderings are artist's conceptions. All areas and stated room dimensions are approximate. Actual usable floor space may vary from the stated floor area. Floor area measured in accordance with Home Construction Regulatory Authority Directive, E.&O.E. Balcony sizes and configurations vary depending on floor level locations.

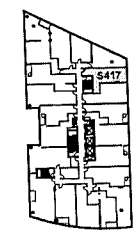
SUITE 317 & SUITE 417 & SUITE 517



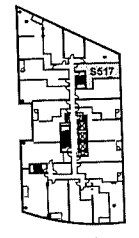
SUITE TYPE: 1B+D
 SUITE AREA: 646 SQFT
 BALCONY / TERRACE: N/A SQFT



LEVEL 03



LEVEL 04



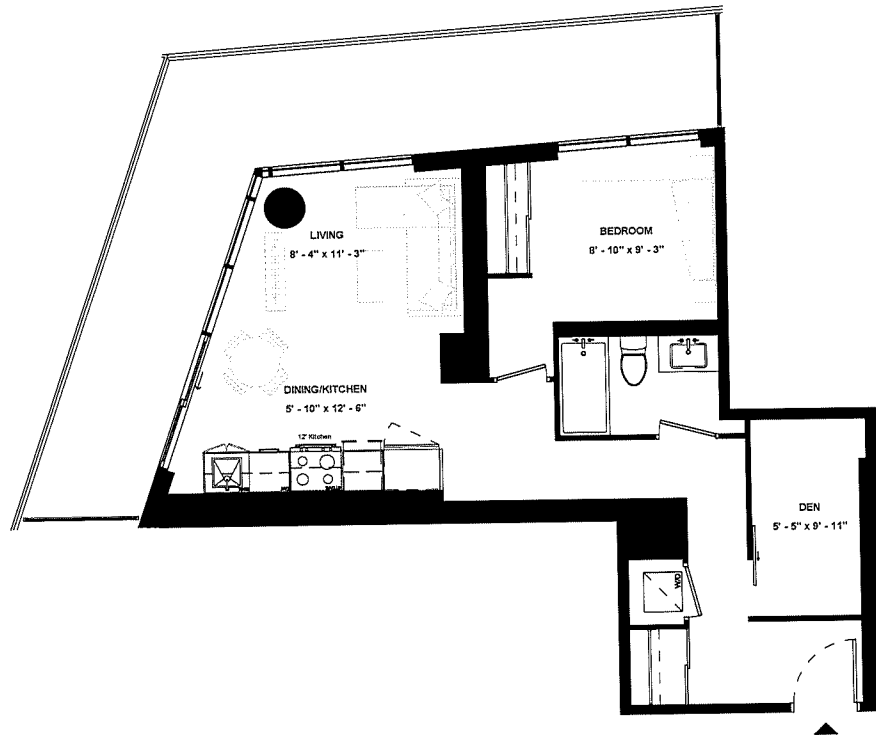
LEVEL 05

ISSUE DATE: 2023/06/02



Disclaimer: Drawings are not to scale. Materials, specifications, & floor plans are subject to change without notice. All renderings are artist's conceptions. All areas and stated room dimensions are approximate. Actual usable floor space may vary from the stated floor area. Floor area measured in accordance with Home Construction Regulatory Authority Directive, E.&O.E. Balcony sizes and configurations vary depending on floor level locations.

SUITE 1209



SUITE TYPE: 1B+D
SUITE AREA: 653 SQFT
BALCONY / TERRACE: 259 SQFT



LEVEL 12

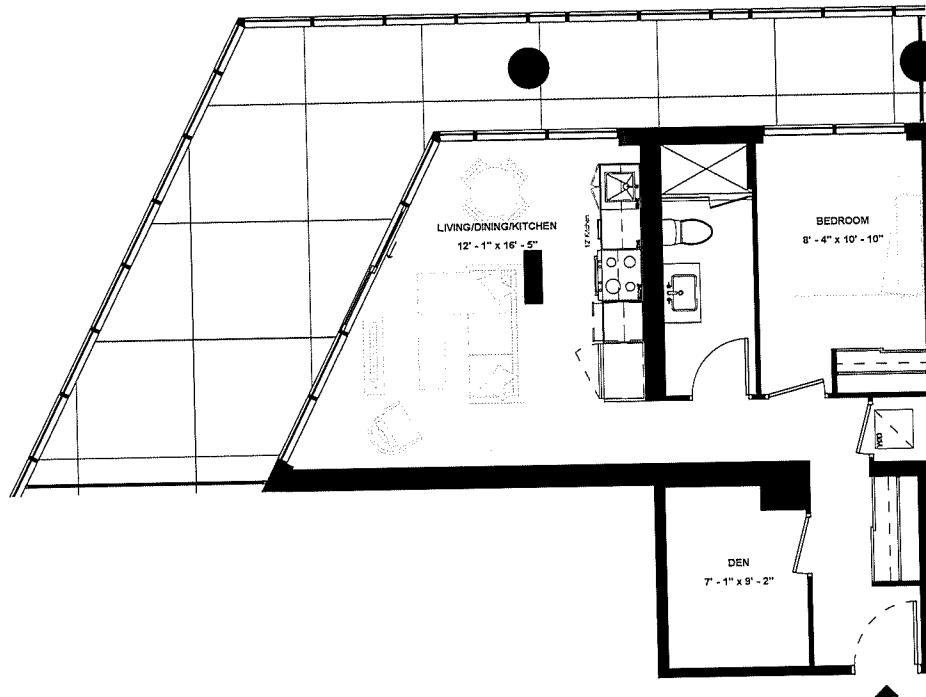


HARHAY
DEVELOPMENTS

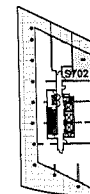
ISSUE DATE: 2023/06/02

Disclaimer: Drawings are not to scale. Materials, specifications, & floor plans are subject to change without notice. All renderings are artist's conceptions. All areas and stated room dimensions are approximate. Actual usable floor space may vary from the stated floor area. Floor area measured in accordance with Home Construction Regulatory Authority Directive, E.&O.E. Balcony sizes and configurations vary depending on floor level locations.

SUITE 702



SUITE TYPE: 1B+D
SUITE AREA: 656 SQFT
BALCONY / TERRACE: 398 SQFT



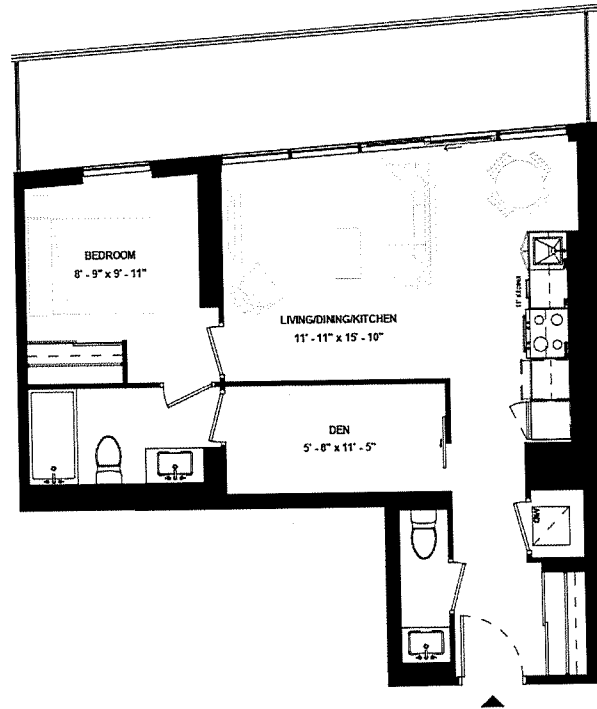
LEVEL 07



ISSUE DATE: 2023/06/02

Disclaimer: Drawings are not to scale. Materials, specifications, & floor plans are subject to change without notice. All renderings are artist's conceptions. All areas and stated room dimensions are approximate. Actual usable floor space may vary from the stated floor area. Floor area measured in accordance with Home Construction Regulatory Authority Directive, E.&O.E. Balcony sizes and configurations vary depending on floor level locations.

SUITE 1206



SUITE TYPE: 1B+D
SUITE AREA: 666 SQFT
BALCONY / TERRACE: 164 SQFT



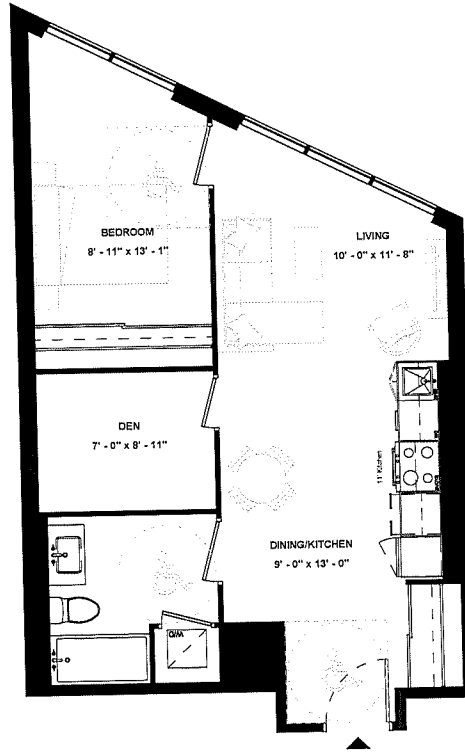
LEVEL 12



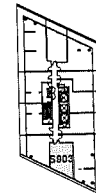
ISSUE DATE: 2023/06/02

Disclaimer: Drawings are not to scale. Materials, specifications, & floor plans are subject to change without notice. All renderings are artist's conceptions. All areas and stated room dimensions are approximate. Actual usable floor space may vary from the stated floor area. Floor area measured in accordance with Home Construction Regulatory Authority Directive, E.60 E. Balcony sizes and configurations vary depending on floor level locations.

SUITE 903



SUITE TYPE: 1B+D (BF)
SUITE AREA: 660 SQFT
BALCONY / TERRACE: N/A



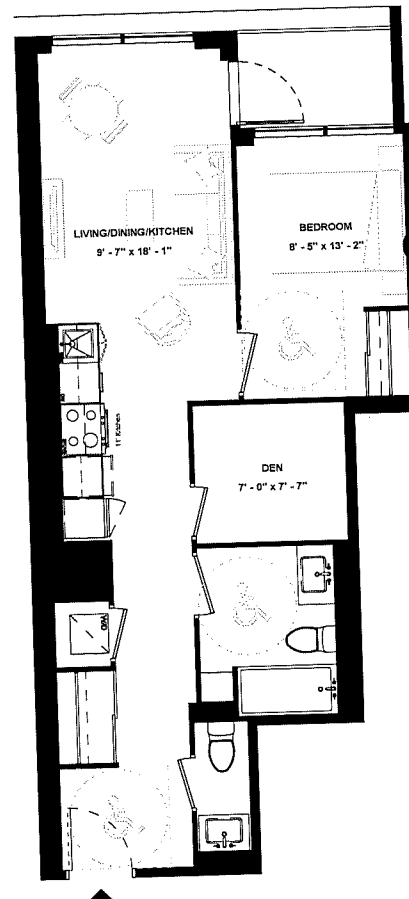
LEVEL 09

ISSUE DATE: 2023/06/02

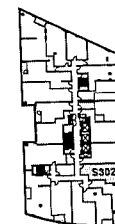


Disclaimer: Drawings are not to scale. Materials, specifications, & floor plans are subject to change without notice. All renderings are artist's conceptions. All areas and stated room dimensions are approximate. Actual usable floor space may vary from the stated floor area. Floor area measured in accordance with Home Construction Regulatory Authority Directive, E.&O.E. Balcony sizes and configurations vary depending on floor level locations.

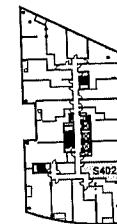
**SUITE 302 &
SUITE 402 &
SUITE 502**



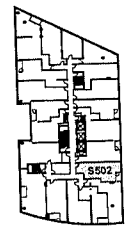
SUITE TYPE: 1B+D (BF)
 SUITE AREA: 663 SQFT
 BALCONY / TERRACE: 35 SQFT



LEVEL 03



LEVEL 04



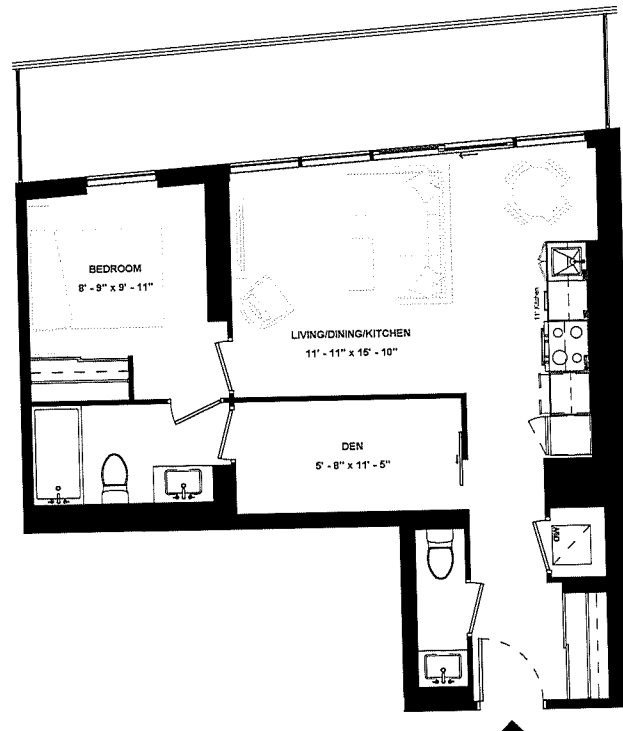
LEVEL 05

ISSUE DATE: 2023/06/02

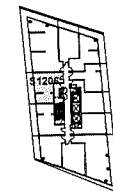


Disclaimer: Drawings are not to scale. Materials, specifications, & floor plans are subject to change without notice. All renderings are artist's conceptions. All areas and stated room dimensions are approximate. Actual usable floor space may vary from the stated floor area. Floor area measured in accordance with Home Construction Regulatory Authority Directive. E.&O.E. Balcony sizes and configurations vary depending on floor level locations.

SUITE 1206



SUITE TYPE: 1B+D
SUITE AREA: 666 SQFT
BALCONY / TERRACE: 164 SQFT



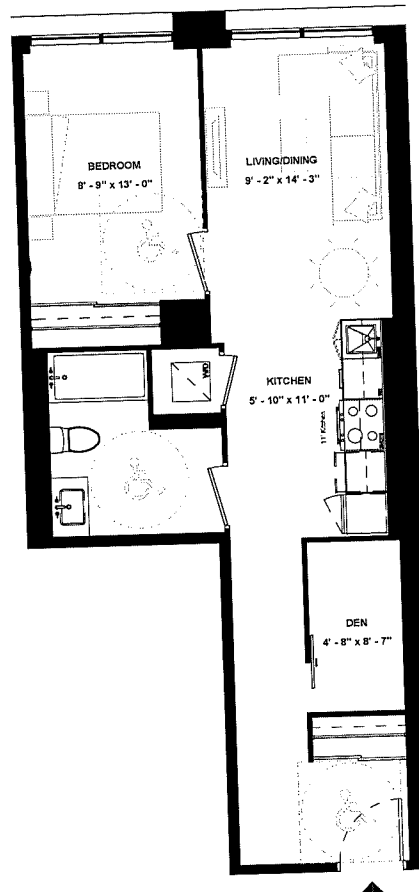
LEVEL 12



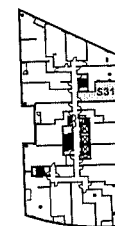
ISSUE DATE: 2023/06/02

Disclaimer: Drawings are not to scale. Materials, specifications, & floor plans are subject to change without notice. All renderings are artist's conceptions. All areas and stated room dimensions are approximate. Actual usable floor space may vary from the stated floor area. Floor area measured in accordance with Home Construction Regulatory Authority Directive. E.&O.E. Balcony sizes and configurations vary depending on floor level locations.

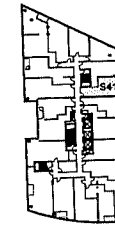
SUITE 318 & SUITE 418 & SUITE 518



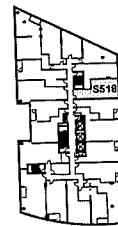
SUITE TYPE: 1B+D (BF)
 SUITE AREA: 667 SQFT
 BALCONY / TERRACE: N/A SQFT



LEVEL 03



LEVEL 04



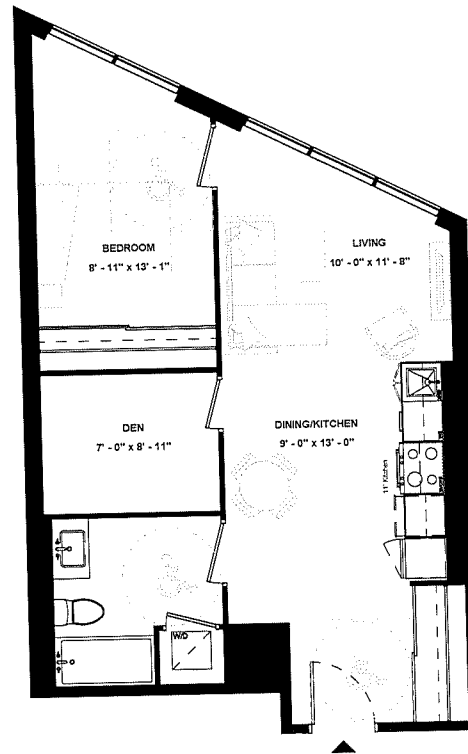
LEVEL 05

ISSUE DATE: 2023/06/02

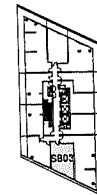


Disclaimer: Drawings are not to scale. Materials, specifications, & floor plans are subject to change without notice. All renderings are artist's conceptions. All areas and stated room dimensions are approximate. Actual usable floor space may vary from the stated floor area. Floor area measured in accordance with Home Construction Regulatory Authority Directive, E.&O.E. Balcony sizes and configurations vary depending on floor level locations.

SUITE 803



SUITE TYPE: 1B+D (BF)
SUITE AREA: 668 SQFT
BALCONY / TERRACE: N/A SQFT



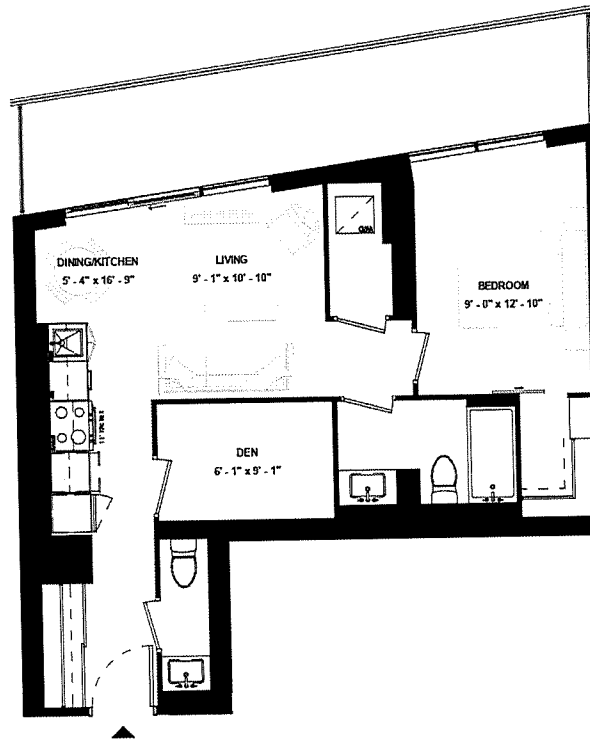
LEVEL 08

ISSUE DATE: 2023/06/02

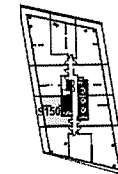


Disclaimer: Drawings are not to scale. Materials, specifications, & floor plans are subject to change without notice. All renderings are artist's conceptions. All areas and stated room dimensions are approximate. Actual usable floor space may vary from the stated floor area. Floor area measured in accordance with Home Construction Regulatory Authority Directive. E.&O.E. Balcony sizes and configurations vary depending on floor level locations.

SUITE 1505



SUITE TYPE: 1B+D
SUITE AREA: 669 SQFT
BALCONY / TERRACE: 165 SQFT



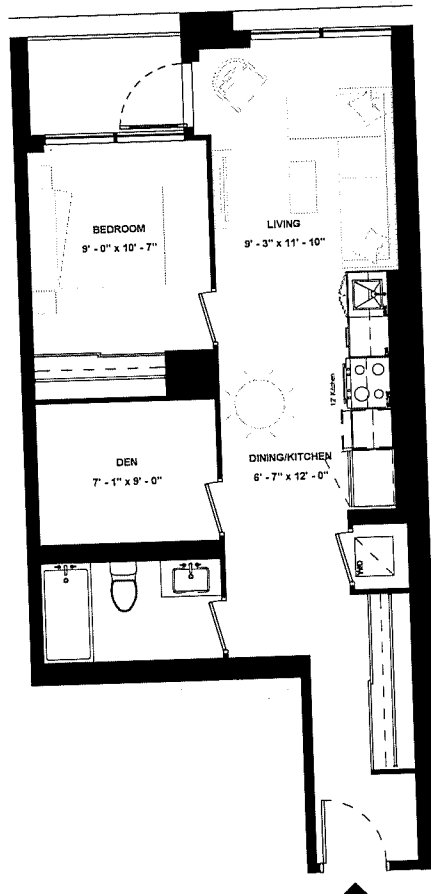
LEVEL 15



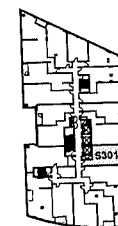
ISSUE DATE: 2023/06/02

Disclaimer: Drawings are not to scale. Materials, specifications, & floor plans are subject to change without notice. All renderings are artist's conceptions. All areas and stated room dimensions are approximate. Actual usable floor space may vary from the stated floor area. Floor area measured in accordance with Home Construction Regulatory Authority Directive, E.&O.E. Balcony sizes and configurations vary depending on floor level locations.

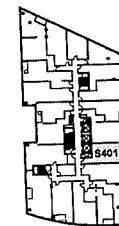
**SUITE 301 &
SUITE 401 &
SUITE 501**



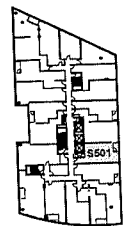
SUITE TYPE: 1B+D
 SUITE AREA: 671 SQFT
 BALCONY / TERRACE: 35 SQFT



LEVEL 03



LEVEL 04



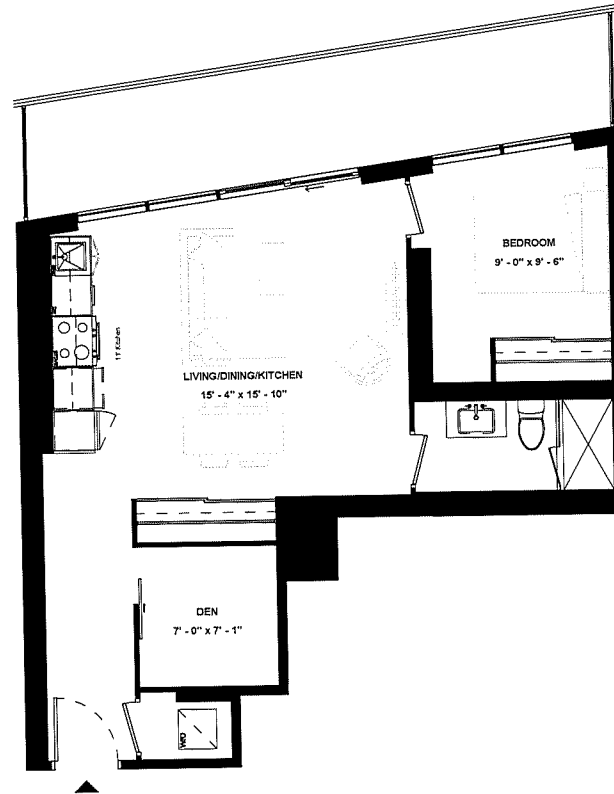
LEVEL 05

ISSUE DATE: 2023/06/02

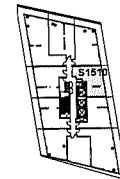


Disclaimer: Drawings are not to scale. Materials, specifications, & floor plans are subject to change without notice. All renderings are artist's conceptions. All areas and stated room dimensions are approximate. Actual usable floor space may vary from the stated floor area. Floor area measured in accordance with Home Construction Regulatory Authority Directive, E.&O.E. Balcony sizes and configurations vary depending on floor level locations.

SUITE 1510



SUITE TYPE: 1B+D
SUITE AREA: 677 SQFT
BALCONY / TERRACE: 165 SQFT



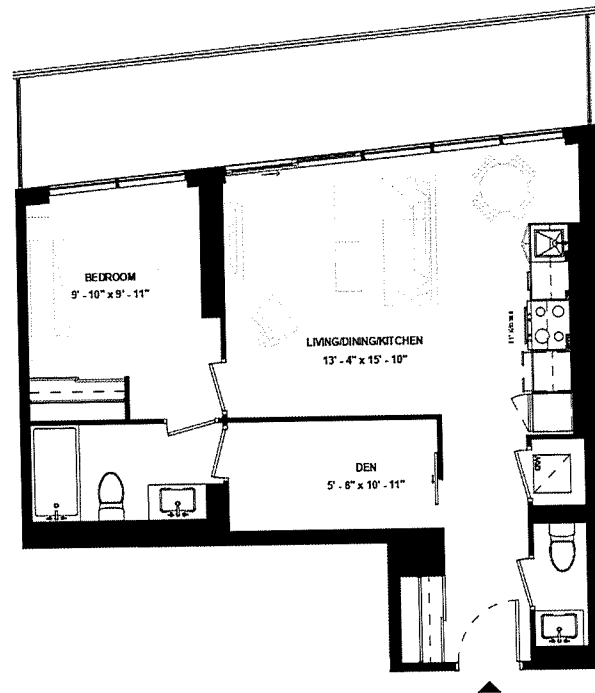
LEVEL 15



ISSUE DATE: 2023/06/02

Disclaimer: Drawings are not to scale. Materials, specifications, & floor plans are subject to change without notice. All renderings are artist's conceptions. All areas and stated room dimensions are approximate. Actual usable floor space may vary from the stated floor area. Floor area measured in accordance with Home Construction Regulatory Authority Directive, E.&O.E. Balcony sizes and configurations vary depending on floor level locations.

SUITE 1306



SUITE TYPE: 1B+D
SUITE AREA: 678 SQFT
BALCONY / TERRACE: 164 SQFT



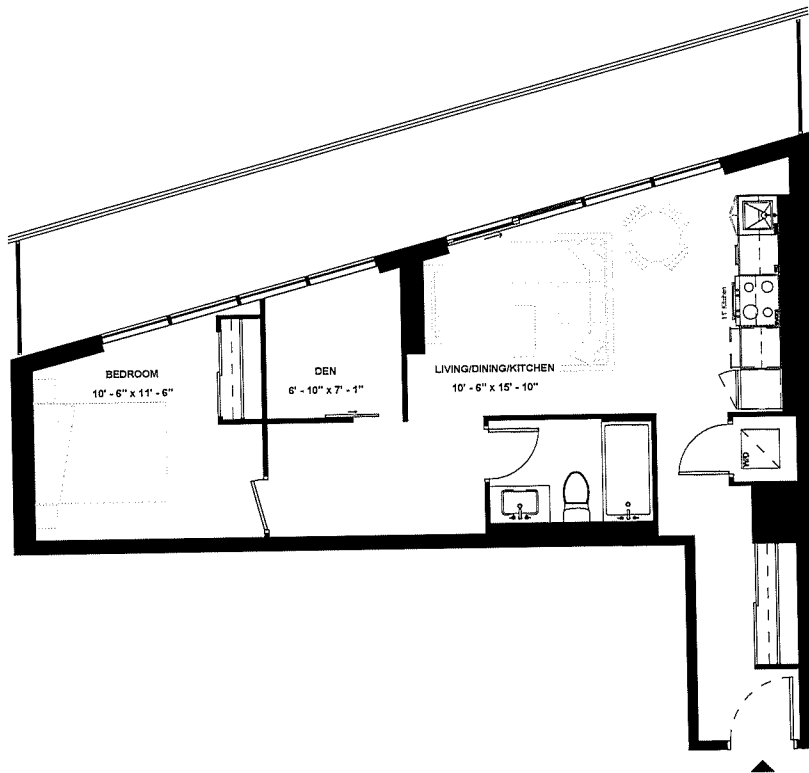
LEVEL 13



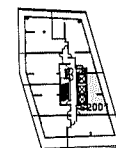
ISSUE DATE: 2023/06/02

Disclaimer: Drawings are not to scale. Materials, specifications, & floor plans are subject to change without notice. All renderings are artist's conceptions. All areas and stated room dimensions are approximate. Actual usable floor space may vary from the stated floor area. Floor area measured in accordance with Home Construction Regulatory Authority Directive, E.80 E. Balcony sizes and configurations vary depending on floor level locations.

SUITE 2001



SUITE TYPE: 1B+D
SUITE AREA: 689 SQFT
BALCONY / TERRACE: 225 SQFT



LEVEL 20

ISSUE DATE: 2023/06/02

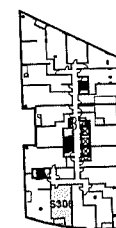
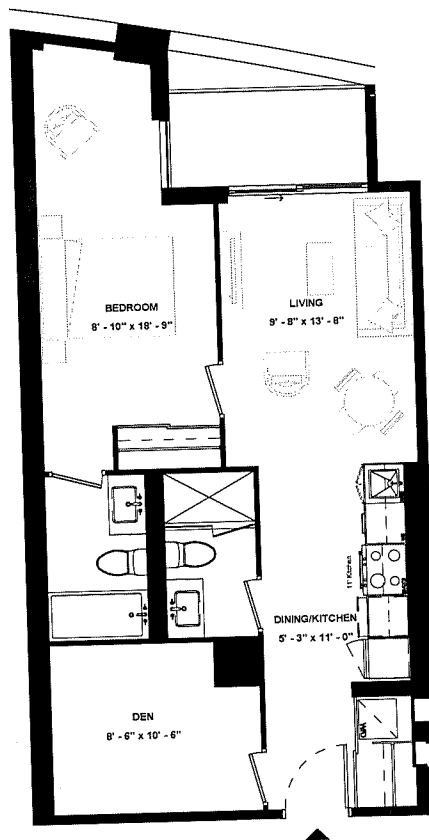


HARHAY
DEVELOPMENTS

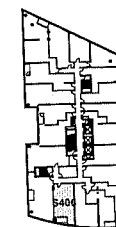
Disclaimer: Drawings are not to scale. Materials, specifications, & floor plans are subject to change without notice. All renderings are artist's conceptions. All areas and stated room dimensions are approximate. Actual usable floor space may vary from the stated floor area. Floor area measured in accordance with Home Construction Regulatory Authority Directive. E.&O.E. Balcony sizes and configurations vary depending on floor level locations.

SUITE 306 & SUITE 406 & SUITE 506

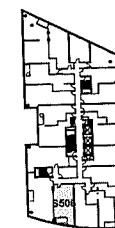
SUITE TYPE: 1B+D
 SUITE AREA: 690 SQFT
 BALCONY / TERRACE: 45 SQFT



LEVEL 03



LEVEL 04



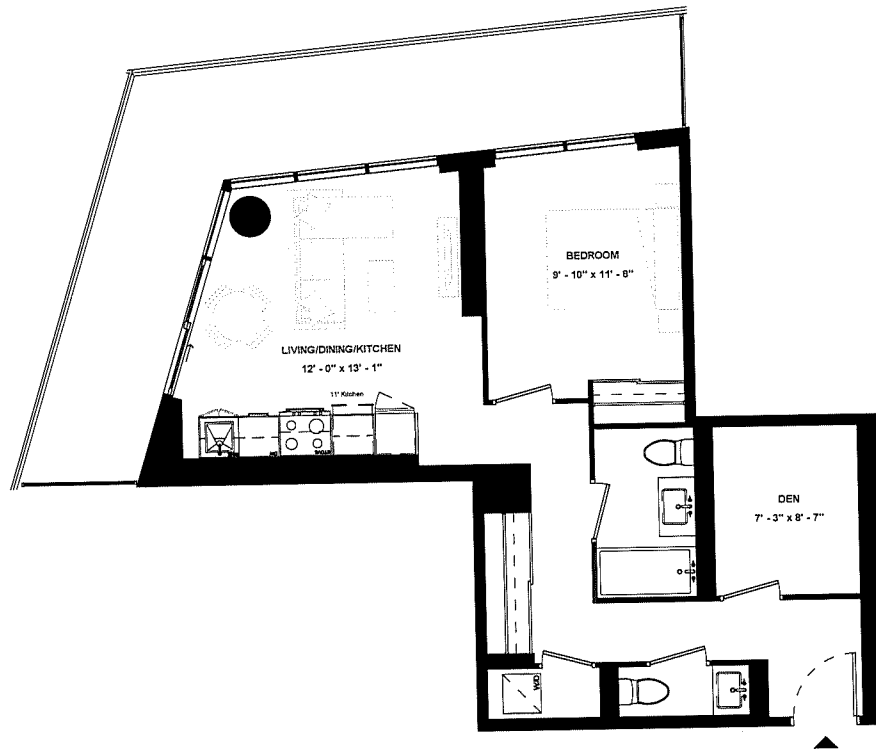
LEVEL 05

ISSUE DATE: 2023/06/02

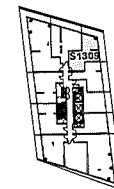


Disclaimer: Drawings are not to scale. Materials, specifications, & floor plans are subject to change without notice. All renderings are artist's conceptions. All areas and stated room dimensions are approximate. Actual usable floor space may vary from the stated floor area. Floor area measured in accordance with Home Construction Regulatory Authority Directive, E.&O.E. Balcony sizes and configurations vary depending on floor level locations.

SUITE 1309



SUITE TYPE: 1B+D
SUITE AREA: 691 SQFT
BALCONY / TERRACE: 243 SQFT



LEVEL 13



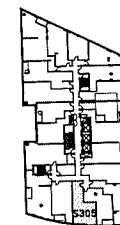
ISSUE DATE: 2023/06/02

Disclaimer: Drawings are not to scale. Materials, specifications, & floor plans are subject to change without notice. All renderings are artist's conceptions. All areas and stated room dimensions are approximate. Actual usable floor space may vary from the stated floor area. Floor area measured in accordance with Home Construction Regulatory Authority Directive, E.&O.E. Balcony sizes and configurations vary depending on floor level locations.

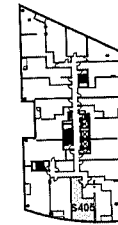
SUITE 305 & SUITE 405 & SUITE 505



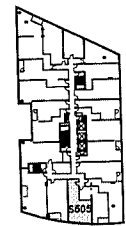
SUITE TYPE: 1B+D
 SUITE AREA: 692 SQFT
 BALCONY / TERRACE: N/A SQFT



LEVEL 03



LEVEL 04



LEVEL 05

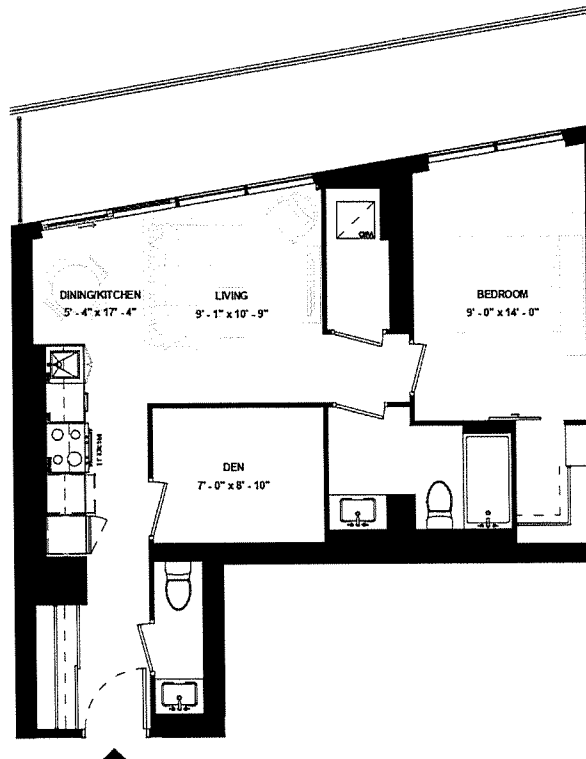
ISSUE DATE: 2023/06/02



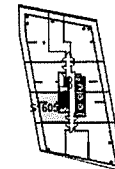
HARHAY
DEVELOPMENTS

Disclaimer: Drawings are not to scale. Materials, specifications, & floor plans are subject to change without notice. All renderings are artist's conceptions. All areas and stated room dimensions are approximate. Actual usable floor space may vary from the stated floor area. Floor area measured in accordance with Home Construction Regulatory Authority Directive, E.&O.E. Balcony sizes and configurations vary depending on floor level locations.

SUITE 1605



SUITE TYPE: 1B+D
SUITE AREA: 698 SQFT
BALCONY / TERRACE: 166 SQFT



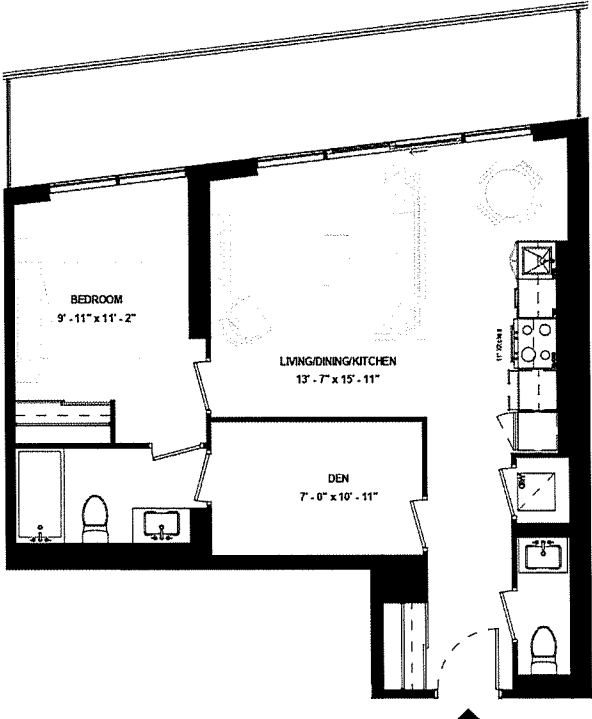
LEVEL 16

ISSUE DATE: 2023/06/02

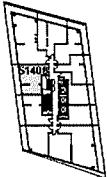


Disclaimer: Drawings are not to scale. Materials, specifications, & floor plans are subject to change without notice. All renderings are artist's conceptions. All areas and stated room dimensions are approximate. Actual usable floor space may vary from the stated floor area. Floor area measured in accordance with Home Construction Regulatory Authority Directive. E.&O.E. Balcony sizes and configurations vary depending on floor level locations.

SUITE 1406



SUITE TYPE: 1B+D
 SUITE AREA: 723 SQFT
 BALCONY / TERRACE: 163 SQFT



LEVEL 14



ISSUE DATE: 2023/06/02

Disclaimer: Drawings are not to scale. Materials, specifications, & floor plans are subject to change without notice. All renderings are artist's conceptions. All areas and stated room dimensions are approximate. Actual usable floor space may vary from the stated floor area. Floor area measured in accordance with Home Construction Regulatory Authority Directive. E.&O.E. Balcony sizes and configurations vary depending on floor level locations.