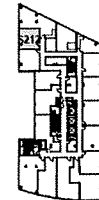
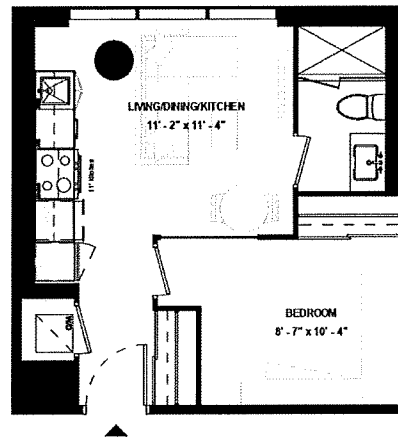


SUITE 212

SUITE TYPE: 1B
SUITE AREA: 428 SQFT
BALCONY / TERRACE: N/A SQFT



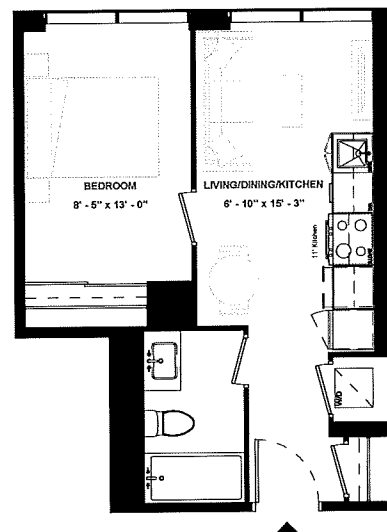
LEVEL 02



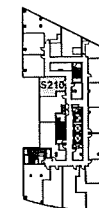
ISSUE DATE: 2023/06/02

Disclaimer: Drawings are not to scale. Materials, specifications, & floor plans are subject to change without notice. All renderings are artist's conceptions. All areas and stated room dimensions are approximate. Actual usable floor space may vary from the stated floor area. Floor area measured in accordance with Home Construction Regulatory Authority Directive. E.A.O.E. Balcony sizes and configurations vary depending on floor level locations.

SUITE 210



SUITE TYPE: 1B
SUITE AREA: 433 SQFT
BALCONY / TERRACE: N/A SQFT



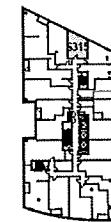
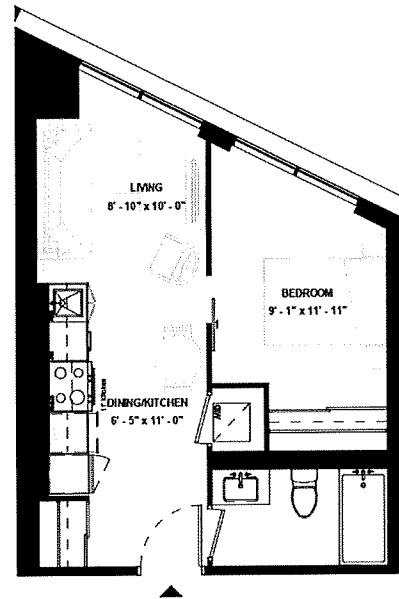
LEVEL 02



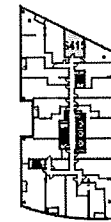
ISSUE DATE: 2023/06/02

**SUITE 315 &
SUITE 415 &
SUITE 515**

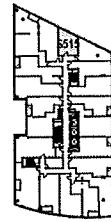
SUITE TYPE: 1B
 SUITE AREA: 466 SQFT
 BALCONY / TERRACE: N/A SQFT



LEVEL 03



LEVEL 04

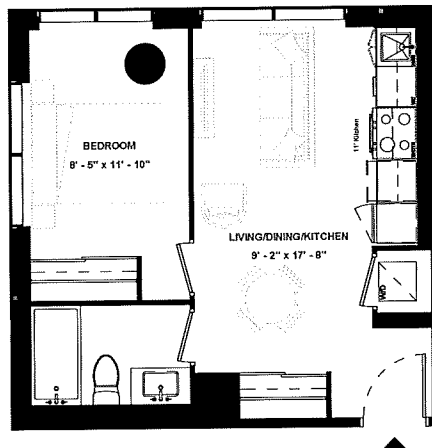


LEVEL 05

ISSUE DATE: 2023/06/02



SUITE 211



SUITE TYPE: 1B
SUITE AREA: 457 SQFT
BALCONY / TERRACE: N/A SQFT

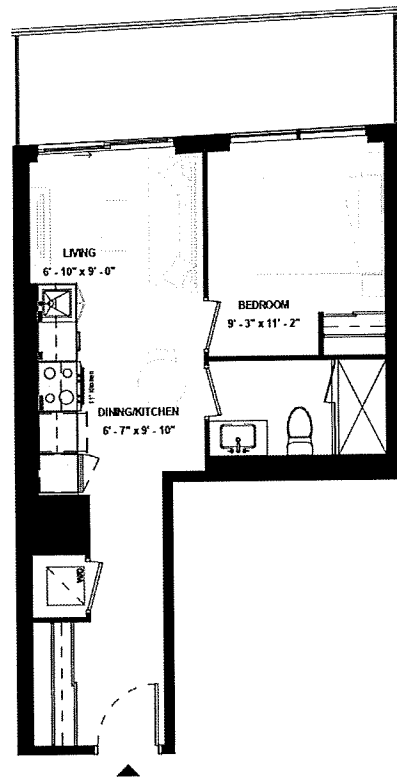


LEVEL 02

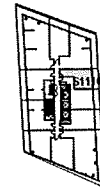


ISSUE DATE: 2023/06/02

SUITE 1110



SUITE TYPE: 1B
SUITE AREA: 463 SQFT
BALCONY / TERRACE: 109 SQFT



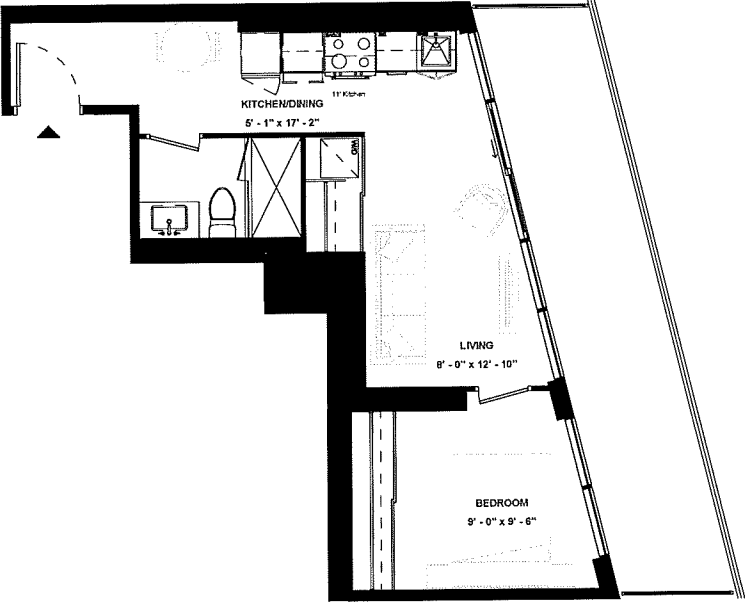
LEVEL 11



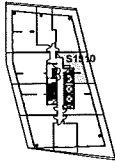
ISSUE DATE: 2023/06/02

Disclaimer: Drawings are not to scale. Materials, specifications, & floor plans are subject to change without notice. All renderings are artist's conceptions. All areas and stated room dimensions are approximate. Actual usable floor space may vary from the stated floor area. Floor area measured in accordance with Home Construction Regulatory Authority Directive. E.&O.E. Balcony sizes and configurations vary depending on floor level locations.

SUITE 1910



SUITE TYPE: 1B
SUITE AREA: 469 SQFT
BALCONY / TERRACE: 168 SQFT



LEVEL 19

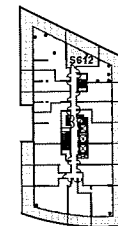
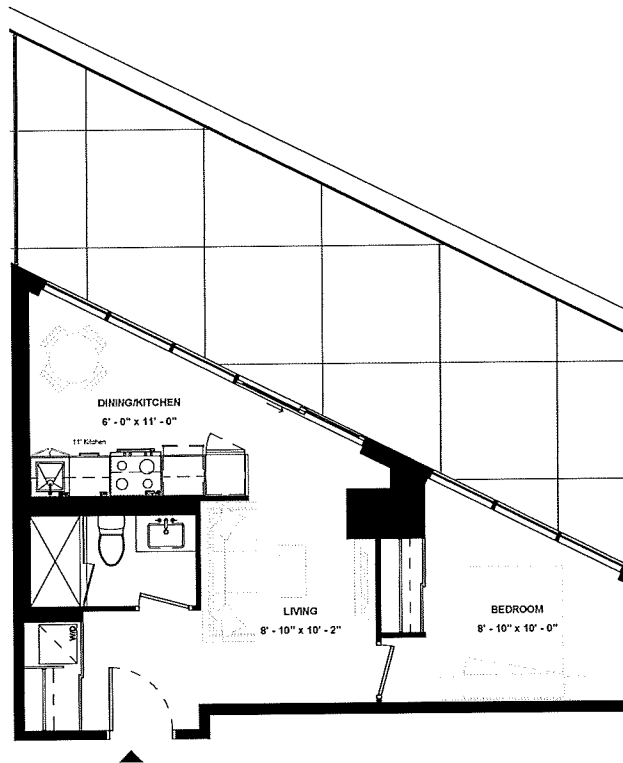


ISSUE DATE: 2023/06/02

Disclaimer: Drawings are not to scale. Materials, specifications, & floor plans are subject to change without notice. All renderings are artist's conceptions. All areas and stated room dimensions are approximate. Actual usable floor space may vary from the stated floor area. Floor area measured in accordance with Home Construction Regulatory Authority Directive, E.&O.E. Balcony sizes and configurations vary depending on floor level locations.

SUITE 612

SUITE TYPE: 1B
SUITE AREA: 471 SQFT
BALCONY / TERRACE: 348 SQFT

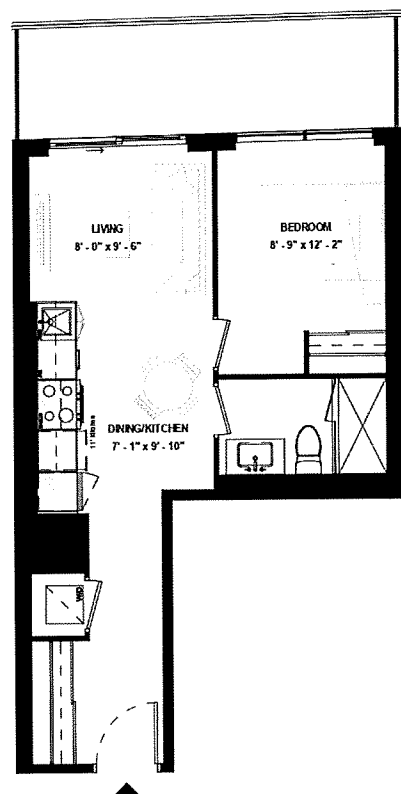


LEVEL 06

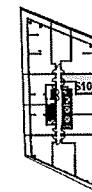


ISSUE DATE: 2023/06/02

SUITE 1010



SUITE TYPE: 1B
SUITE AREA: 484 SQFT
BALCONY / TERRACE: 109 SQFT



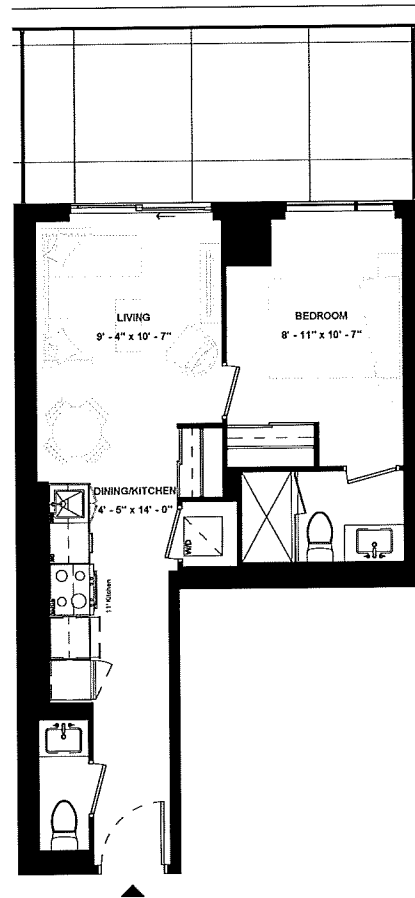
LEVEL 10



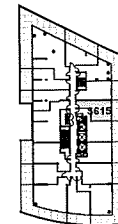
ISSUE DATE: 2023/06/02

Disclaimer: Drawings are not to scale. Materials, specifications, & floor plans are subject to change without notice. All renderings are artist's conceptions. All areas and stated room dimensions are approximate. Actual usable floor space may vary from the stated floor area. Floor area measured in accordance with Home Construction Regulatory Authority Directive, E.&O.E. Balcony sizes and configurations vary depending on floor level locations.

SUITE 615



SUITE TYPE: 1B
SUITE AREA: 491 SQFT
BALCONY / TERRACE: 167 SQFT



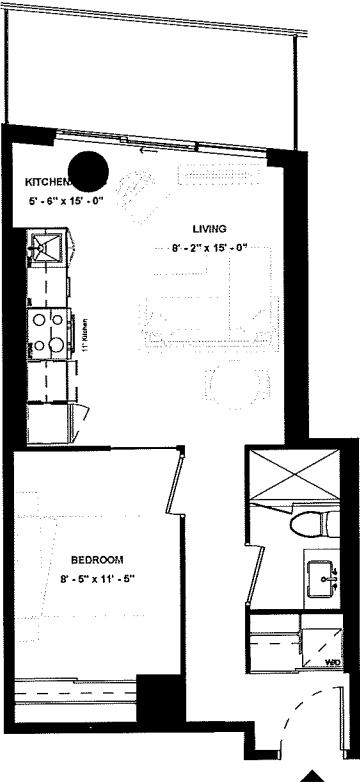
LEVEL 06



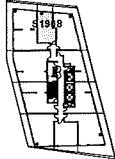
ISSUE DATE: 2023/06/02

Disclaimer: Drawings are not to scale. Materials, specifications, & floor plans are subject to change without notice. All renderings are artist's conceptions. All areas and stated room dimensions are approximate. Actual usable floor space may vary from the stated floor area. Floor area measured in accordance with Home Construction Regulatory Authority Directive, E.&O.E. Balcony sizes and configurations vary depending on floor level locations.

SUITE 1908



SUITE TYPE: 1B
SUITE AREA: 491 SQFT
BALCONY / TERRACE: 81 SQFT



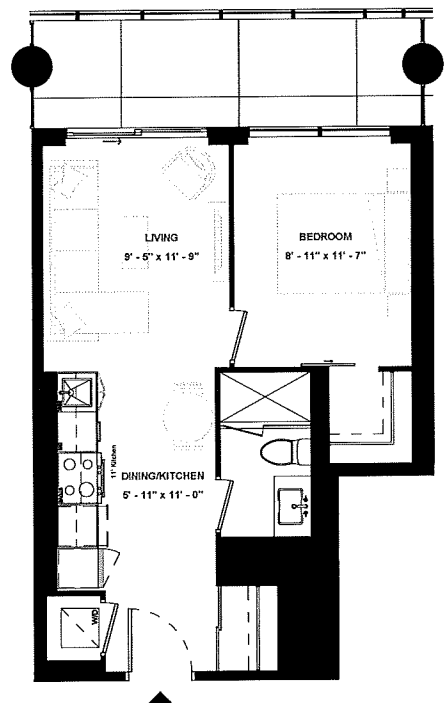
LEVEL 19



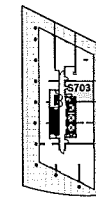
ISSUE DATE: 2023/06/02

Disclaimer: Drawings are not to scale. Materials, specifications, & floor plans are subject to change without notice. All renderings are artist's conceptions. All areas and stated room dimensions are approximate. Actual usable floor space may vary from the stated floor area. Floor area measured in accordance with Home Construction Regulatory Authority Directive, E.&O.E. Balcony sizes and configurations vary depending on floor level locations.

SUITE 703



SUITE TYPE: 1B
SUITE AREA: 496 SQFT
BALCONY / TERRACE: 104 SQFT



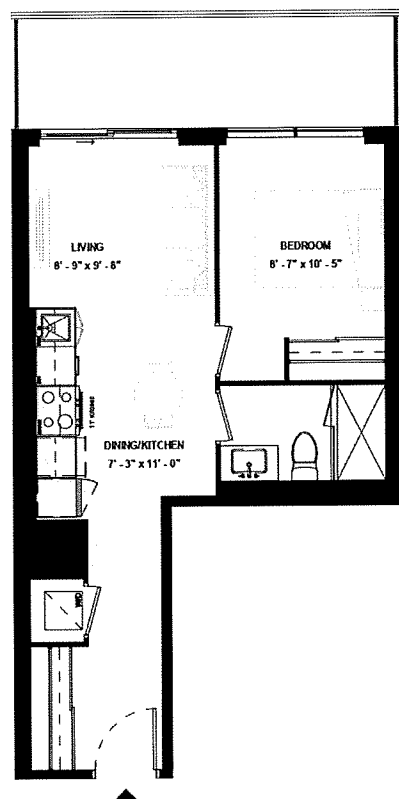
LEVEL 07



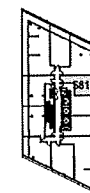
ISSUE DATE: 2023/06/02

Disclaimer: Drawings are not to scale. Materials, specifications, & floor plans are subject to change without notice. All renderings are artist's conceptions. All areas and stated room dimensions are approximate. Actual usable floor space may vary from the stated floor area. Floor area measured in accordance with Home Construction Regulatory Authority Directive. E.&O.E. Balcony sizes and configurations vary depending on floor level locations.

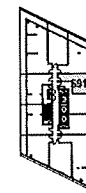
SUITE 810 & SUITE 910



SUITE TYPE: 1B
 SUITE AREA: 496 SQFT
 BALCONY / TERRACE: 109 SQFT



LEVEL 08



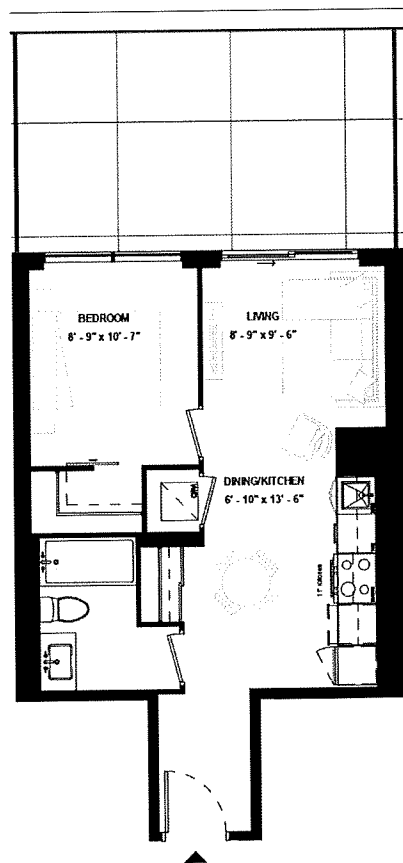
LEVEL 09

ISSUE DATE: 2023/06/02

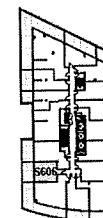


Disclaimer: Drawings are not to scale. Materials, specifications, & floor plans are subject to change without notice. All renderings are artist's conceptions. All areas and stated room dimensions are approximate. Actual usable floor space may vary from the stated floor area. Floor area measured in accordance with Home Construction Regulatory Authority Directive, E.80 E. Balcony sizes and configurations vary depending on floor level locations.

SUITE 606



SUITE TYPE: 1B
SUITE AREA: 499 SQFT
BALCONY / TERRACE: 219 SQFT



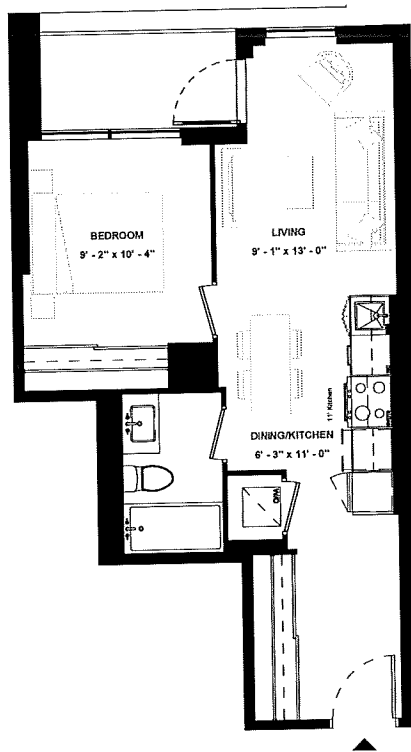
LEVEL 06



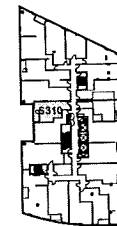
ISSUE DATE: 2023/06/02

Disclaimer: Drawings are not to scale. Materials, specifications, & floor plans are subject to change without notice. All renderings are artist's conceptions. All areas and stated room dimensions are approximate. Actual usable floor space may vary from the stated floor area. Floor area measured in accordance with Home Construction Regulatory Authority Directive, E.80 E. Balcony sizes and configurations vary depending on floor level locations.

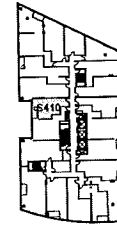
SUITE 310 & SUITE 410 & SUITE 510



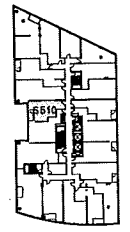
SUITE TYPE: 1B
 SUITE AREA: 511 SQFT
 BALCONY / TERRACE: 45 SQFT



LEVEL 03



LEVEL 04

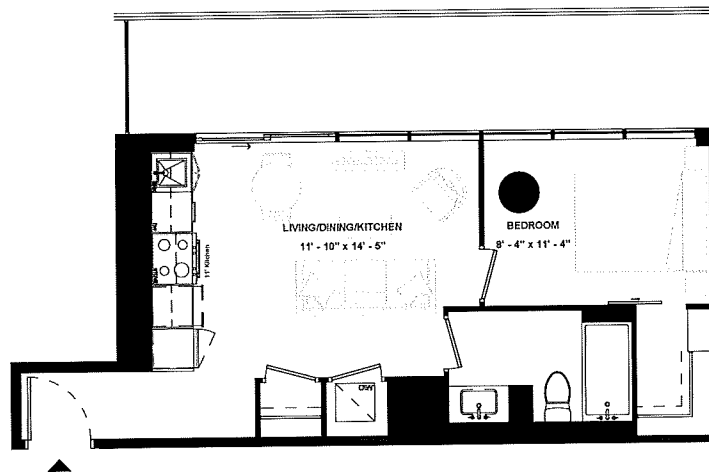


LEVEL 05

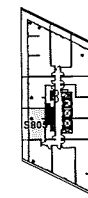
ISSUE DATE: 2023/06/02



SUITE 805



SUITE TYPE: 1B
SUITE AREA: 511 SQFT
BALCONY / TERRACE: 163 SQFT



LEVEL 08

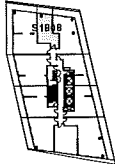
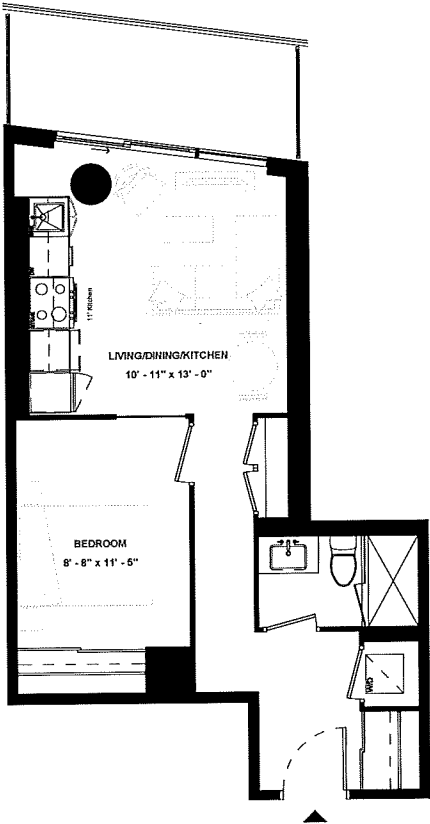


ISSUE DATE: 2023/06/02

Disclaimer: Drawings are not to scale. Materials, specifications, & floor plans are subject to change without notice. All renderings are artist's conceptions. All areas and stated room dimensions are approximate. Actual usable floor space may vary from the stated floor area. Floor area measured in accordance with Home Construction Regulatory Authority Directive, E.&O.E. Balcony sizes and configurations vary depending on floor level locations.

SUITE 1808

SUITE TYPE: 1B
 SUITE AREA: 511 SQFT
 BALCONY / TERRACE: 81 SQFT



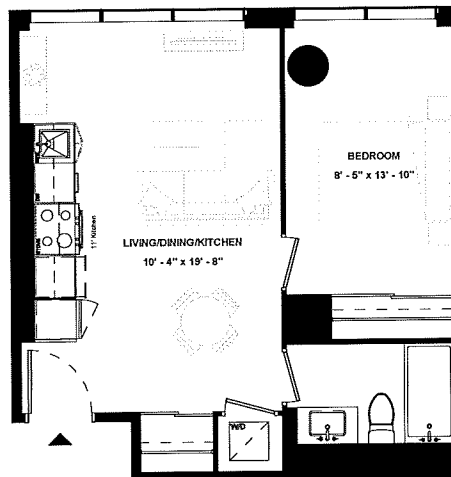
LEVEL 18



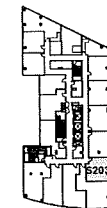
ISSUE DATE: 2023/06/02

Disclaimer: Drawings are not to scale. Materials, specifications, & floor plans are subject to change without notice. All renderings are artist's conceptions. All areas and stated room dimensions are approximate. Actual usable floor space may vary from the stated floor area. Floor area measured in accordance with Home Construction Regulatory Authority Directive. E. & O. E. Balcony sizes and configurations vary depending on floor level locations.

SUITE 203



SUITE TYPE: 1B
SUITE AREA: 512 SQFT
BALCONY / TERRACE: N/A SQFT

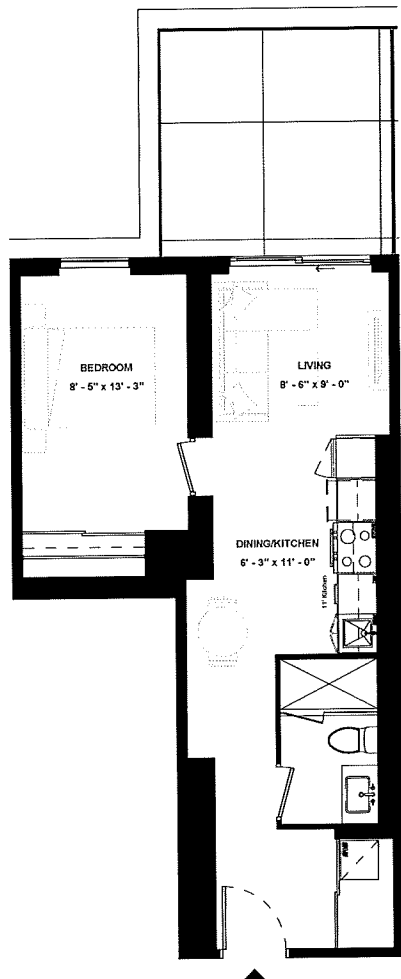


LEVEL 02

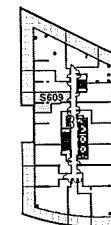
ISSUE DATE: 2023/06/02



SUITE 609



SUITE TYPE: 1B
SUITE AREA: 513 SQFT
BALCONY / TERRACE: 127 SQFT



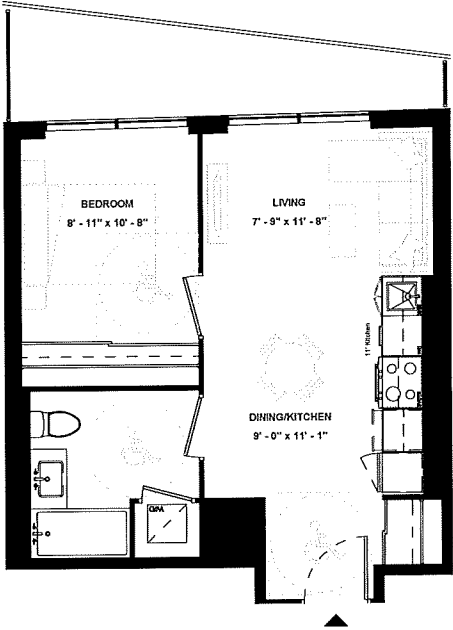
LEVEL 06



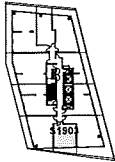
ISSUE DATE: 2023/06/02

Disclaimer: Drawings are not to scale. Materials, specifications, & floor plans are subject to change without notice. All renderings are artist's conceptions. All areas and stated room dimensions are approximate. Actual usable floor space may vary from the stated floor area. Floor area measured in accordance with Home Construction Regulatory Authority Directive, E.&O.E. Balcony sizes and configurations vary depending on floor level locations.

SUITE 1903



SUITE TYPE: 1B (BF)
SUITE AREA: 513 SQFT
BALCONY / TERRACE: 107 SQFT



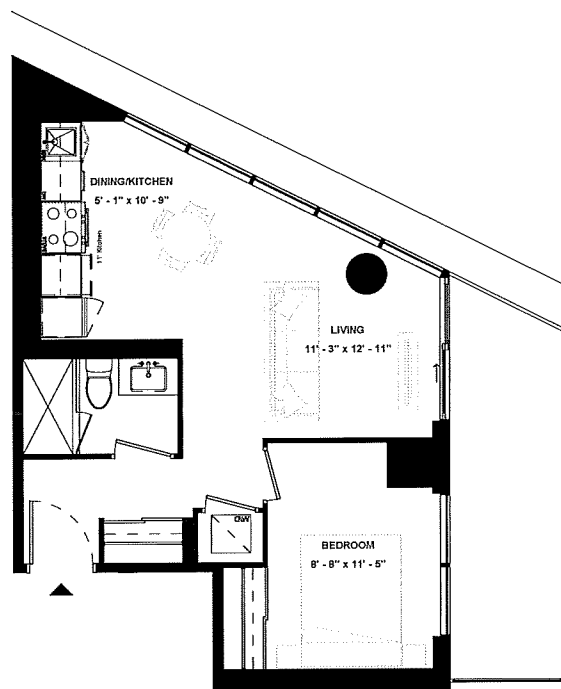
LEVEL 19



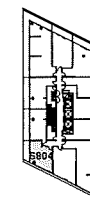
ISSUE DATE: 2023/06/02

Disclaimer: Drawings are not to scale. Materials, specifications, & floor plans are subject to change without notice. All renderings are artist's conceptions. All areas and stated room dimensions are approximate. Actual usable floor space may vary from the stated floor area. Floor area measured in accordance with Home Construction Regulatory Authority Directive, E.&O.E. Balcony sizes and configurations vary depending on floor level locations.

SUITE 804



SUITE TYPE: 1B
SUITE AREA: 514 SQFT
BALCONY / TERRACE: 104 SQFT

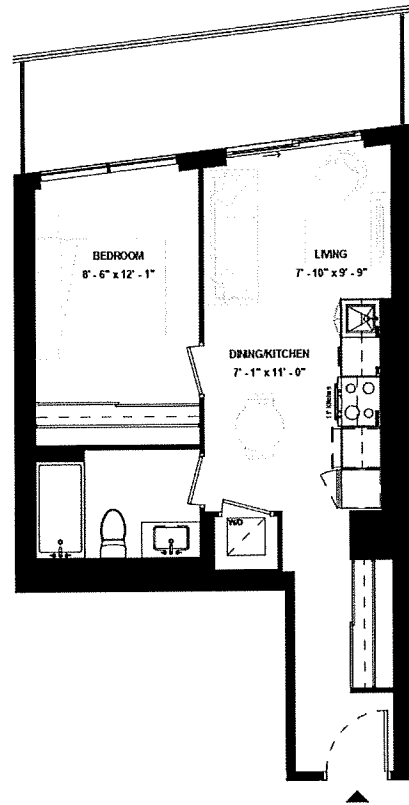


LEVEL 08



ISSUE DATE: 2023/06/02

SUITE 1401



SUITE TYPE: 1B
SUITE AREA: 615 SQFT
BALCONY / TERRACE: 110 SQFT



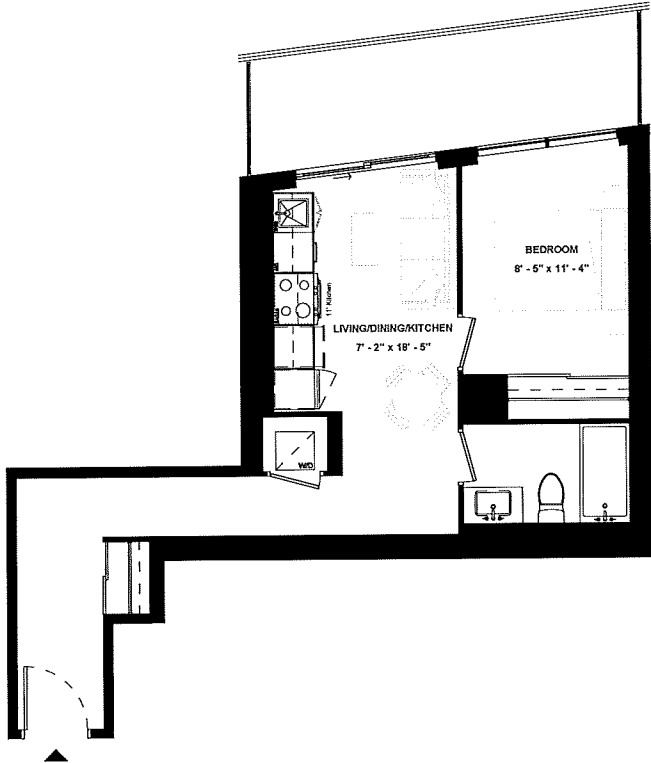
LEVEL 14



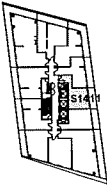
ISSUE DATE: 2023/06/02

Disclaimer: Drawings are not to scale. Materials, specifications, & floor plans are subject to change without notice. All renderings are artist's conceptions. All areas and stated room dimensions are approximate. Actual usable floor space may vary from the stated floor area. Floor area measured in accordance with Home Construction Regulatory Authority Directive. E.&O.E. Balcony sizes and configurations vary depending on floor level locations.

SUITE 1411



SUITE TYPE: 1B
SUITE AREA: 515 SQFT
BALCONY / TERRACE: 110 SQFT



LEVEL 14



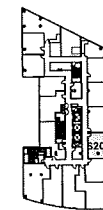
ISSUE DATE: 2023/06/02

Disclaimer: Drawings are not to scale. Materials, specifications, & floor plans are subject to change without notice. All renderings are artist's conceptions. All areas and stated room dimensions are approximate. Actual usable floor space may vary from the stated floor area. Floor area measured in accordance with Home Construction Regulatory Authority Directive. E.&O.E. Balcony sizes and configurations vary depending on floor level locations.

SUITE 202



SUITE TYPE: 1B
SUITE AREA: 517 SQFT
BALCONY / TERRACE: N/A SQFT

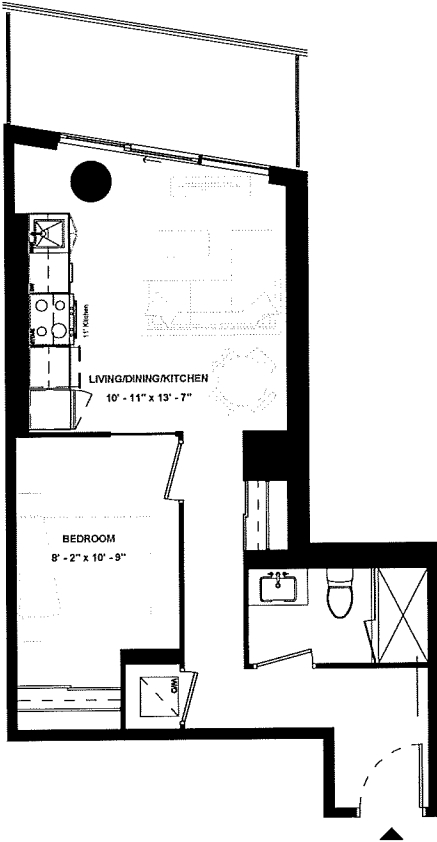


LEVEL 02

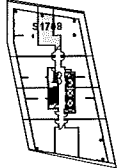


ISSUE DATE: 2023/06/02

SUITE 1708



SUITE TYPE: 1B
SUITE AREA: 519 SQFT
BALCONY / TERRACE: 81 SQFT



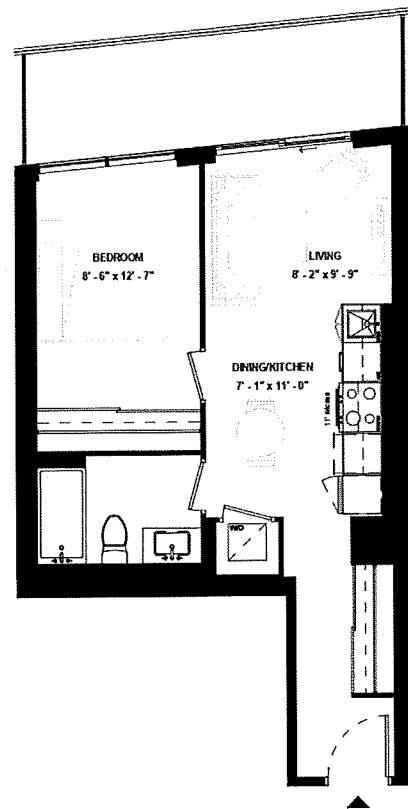
LEVEL 17



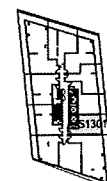
ISSUE DATE: 2023/06/02

Disclaimer: Drawings are not to scale. Materials, specifications, & floor plans are subject to change without notice. All renderings are artist's conceptions. All areas and stated room dimensions are approximate. Actual usable floor space may vary from the stated floor area. Floor area measured in accordance with Home Construction Regulatory Authority Directive, E.&O.E. Balcony sizes and configurations vary depending on floor level locations.

SUITE 1301



SUITE TYPE:	1B
SUITE AREA:	525 SQFT
BALCONY / TERRACE:	109 SQFT



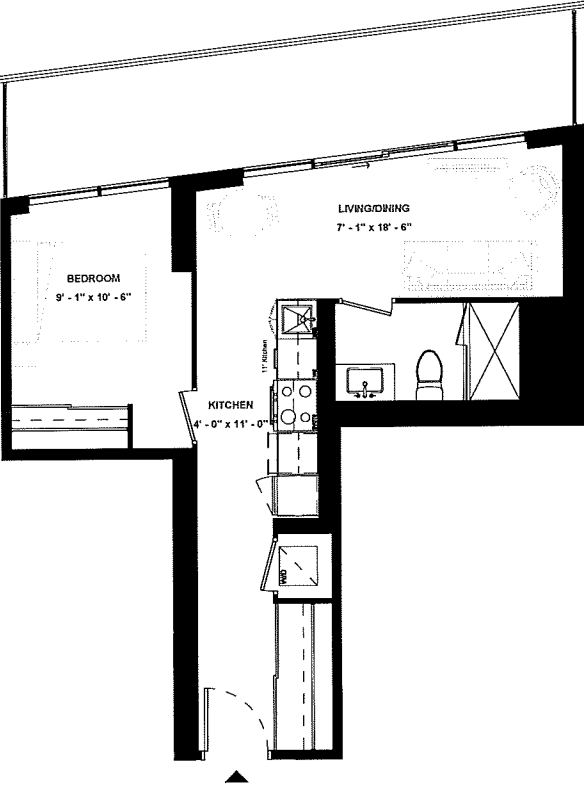
LEVEL 13



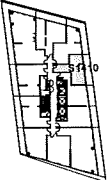
ISSUE DATE: 2023/06/02

Disclaimer: Drawings are not to scale. Materials, specifications, & floor plans are subject to change without notice. All renderings are artist's conceptions. All areas and stated room dimensions are approximate. Actual usable floor space may vary from the stated floor area. Floor area measured in accordance with Home Construction Regulatory Authority Directive. E.&O.E. Balcony sizes and configurations vary depending on floor level locations.

SUITE 1410



SUITE TYPE: 1B
 SUITE AREA: 525 SQFT
 BALCONY / TERRACE: 161 SQFT



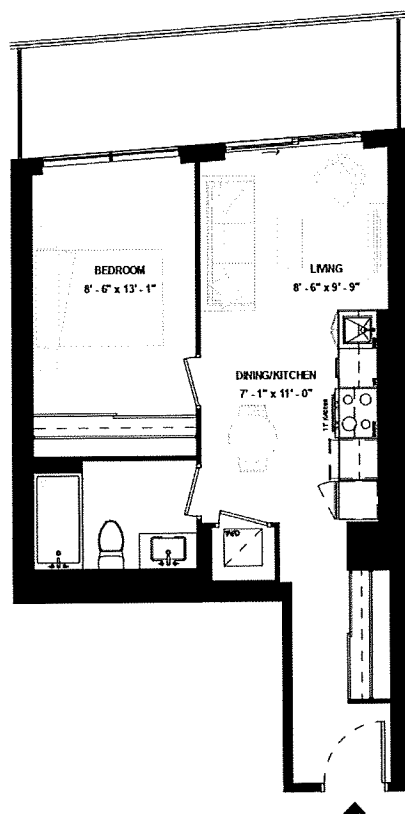
LEVEL 14



ISSUE DATE: 2023/06/02

Disclaimer: Drawings are not to scale. Materials, specifications, & floor plans are subject to change without notice. All renderings are artist's conceptions. All areas and stated room dimensions are approximate. Actual usable floor space may vary from the stated floor area. Floor area measured in accordance with Home Construction Regulatory Authority Directive. E.&O.E. Balcony sizes and configurations vary depending on floor level locations.

SUITE 1201



SUITE TYPE: 1B
SUITE AREA: 532 SQFT
BALCONY / TERRACE: 109 SQFT



LEVEL 12

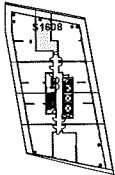
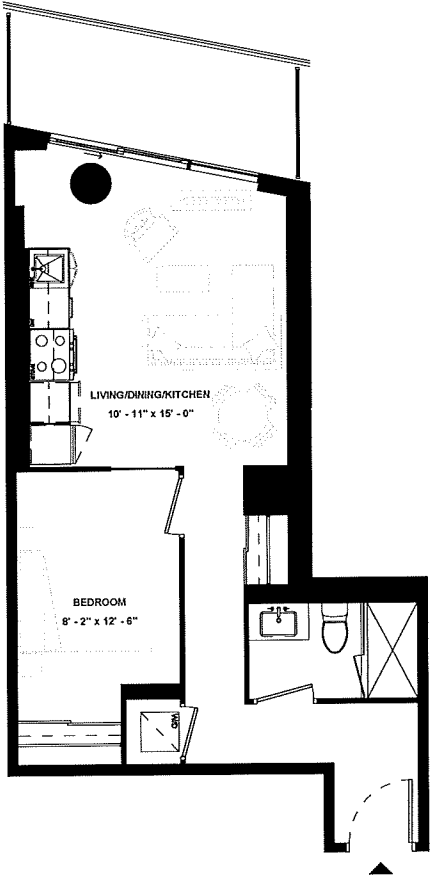


ISSUE DATE: 2023/06/02

Disclaimer: Drawings are not to scale. Materials, specifications, & floor plans are subject to change without notice. All renderings are artist's conceptions. All areas and stated room dimensions are approximate. Actual usable floor space may vary from the stated floor area. Floor area measured in accordance with Home Construction Regulatory Authority Directive, E.&O.E. Balcony sizes and configurations vary depending on floor level locations.

SUITE 1608

SUITE TYPE: 1B
SUITE AREA: 533 SQFT
BALCONY / TERRACE: 82 SQFT



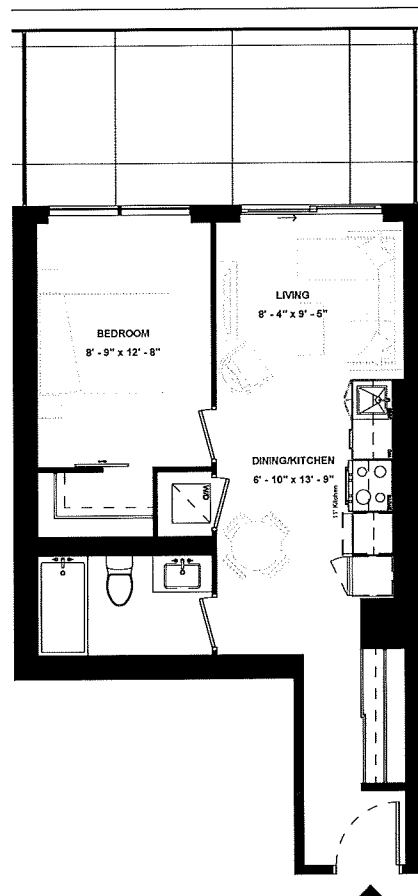
LEVEL 16



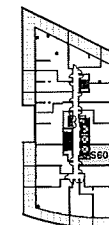
ISSUE DATE: 2023/06/02

Disclaimer: Drawings are not to scale. Materials, specifications, & floor plans are subject to change without notice. All renderings are artist's conceptions. All areas and stated room dimensions are approximate. Actual usable floor space may vary from the stated floor area. Floor area measured in accordance with Home Construction Regulatory Authority Directive. E.&O.E. Balcony sizes and configurations vary depending on floor level locations.

SUITE 601



SUITE TYPE: 1B
SUITE AREA: 534 SQFT
BALCONY / TERRACE: 167 SQFT

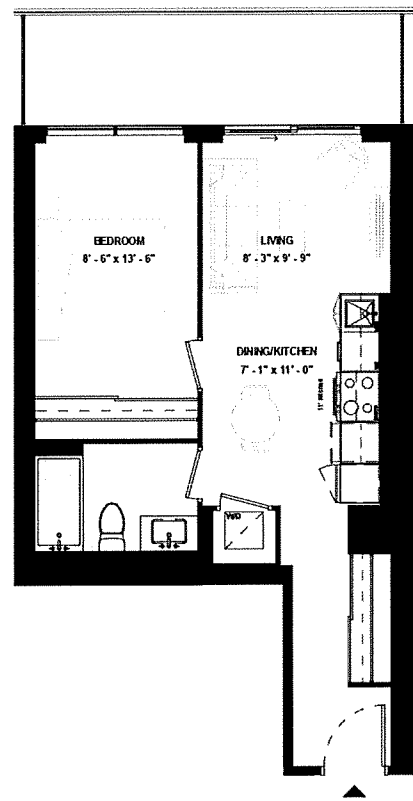


LEVEL 06

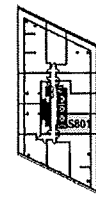


ISSUE DATE: 2023/06/02

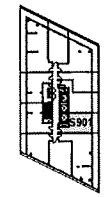
SUITE 801 & SUITE 901



SUITE TYPE: 1B
 SUITE AREA: 534 SQFT
 BALCONY / TERRACE: 109 SQFT



LEVEL 08



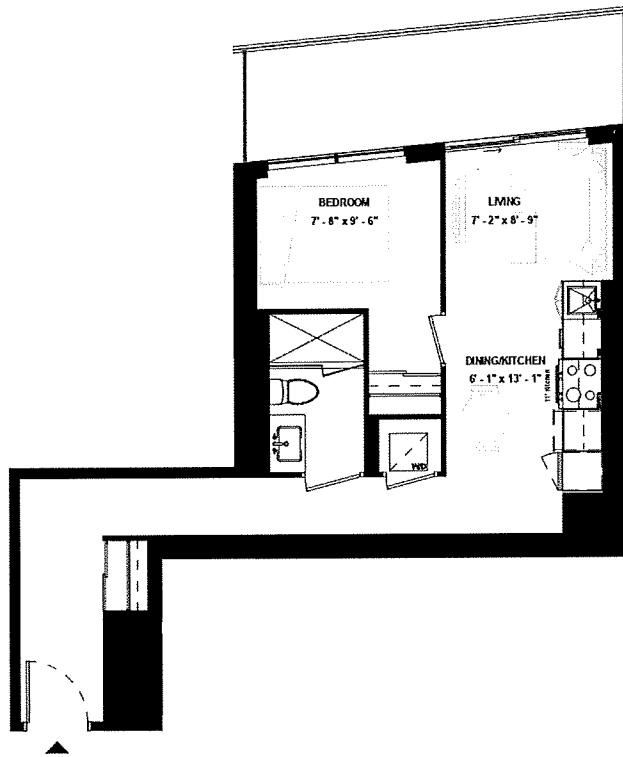
LEVEL 09



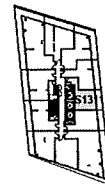
ISSUE DATE: 2023/06/02

Disclaimer: Drawings are not to scale. Materials, specifications, & floor plans are subject to change without notice. All renderings are artist's conceptions. All areas and stated room dimensions are approximate. Actual usable floor space may vary from the stated floor area. Floor area measured in accordance with Home Construction Regulatory Authority Directive, E.&O.E. Balcony sizes and configurations vary depending on floor level locations.

SUITE 1311



SUITE TYPE: 1B
 SUITE AREA: 534 SQFT
 BALCONY / TERRACE: 109 SQFT



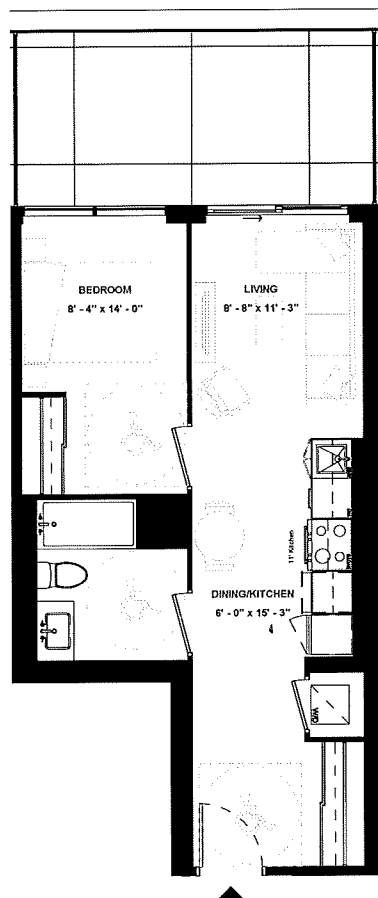
LEVEL 13



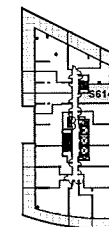
ISSUE DATE: 2023/06/02

Disclaimer: Drawings are not to scale. Materials, specifications, & floor plans are subject to change without notice. All renderings are artist's conceptions. All areas and stated room dimensions are approximate. Actual usable floor space may vary from the stated floor area. Floor area measured in accordance with Home Construction Regulatory Authority Directive, E.80 E. Balcony sizes and configurations vary depending on floor level locations.

SUITE 614



SUITE TYPE: 1B (BF)
SUITE AREA: 538 SQFT
BALCONY / TERRACE: 153 SQFT

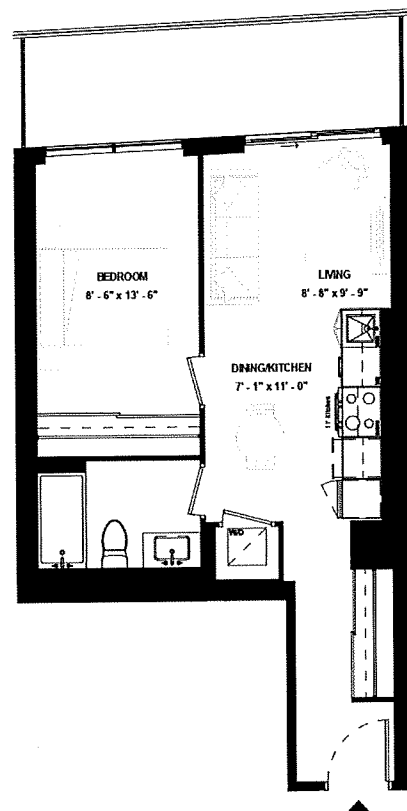


LEVEL 06



ISSUE DATE: 2023/06/02

SUITE 1101



SUITE TYPE: 1B
SUITE AREA: 538 SQFT
BALCONY / TERRACE: 109 SQFT



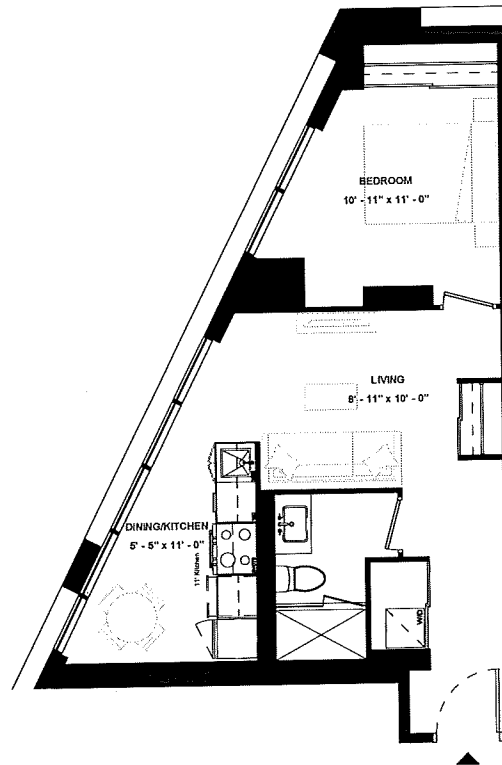
LEVEL 11



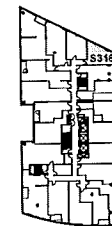
ISSUE DATE: 2023/06/02

Disclaimer: Drawings are not to scale. Materials, specifications, & floor plans are subject to change without notice. All renderings are artist's conceptions. All areas and stated room dimensions are approximate. Actual usable floor space may vary from the stated floor area. Floor area measured in accordance with Home Construction Regulatory Authority Directive. E.&O.E. Balcony sizes and configurations vary depending on floor level locations.

**SUITE 316 &
SUITE 416 &
SUITE 516**



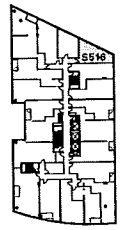
SUITE TYPE: 1B
 SUITE AREA: 539 SQFT
 BALCONY / TERRACE: N/A SQFT



LEVEL 03



LEVEL 04

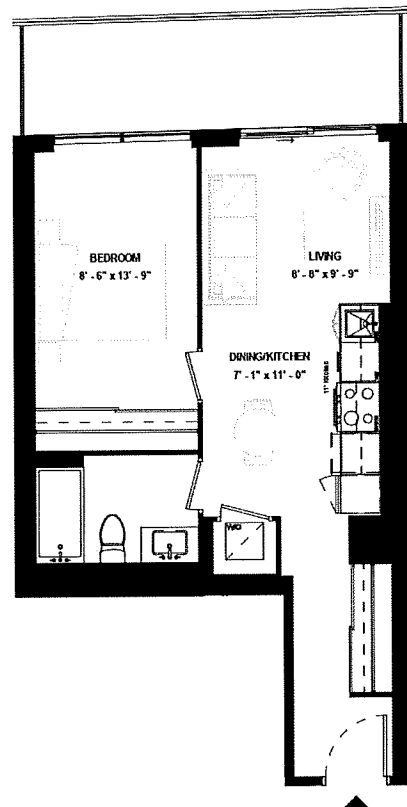


LEVEL 05

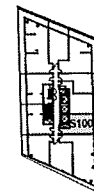
ISSUE DATE: 2023/06/02



SUITE 1001



SUITE TYPE: 1B
SUITE AREA: 641 SQFT
BALCONY / TERRACE: 109 SQFT



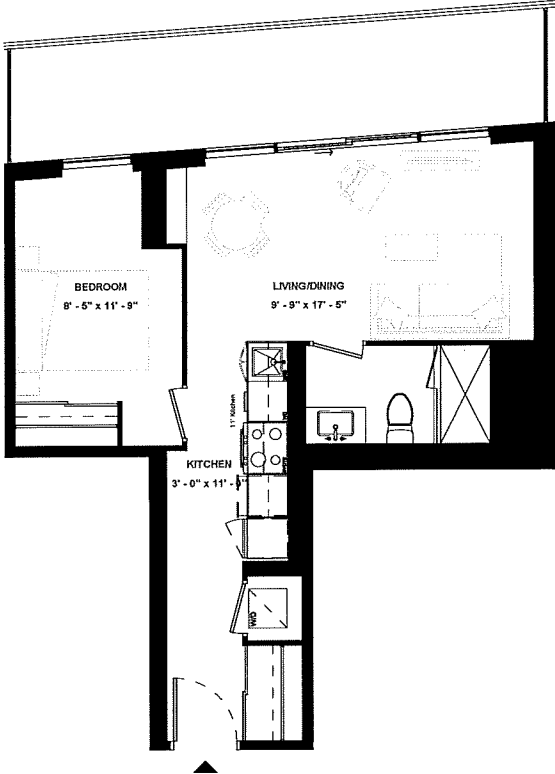
LEVEL 10



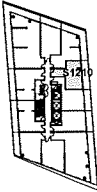
ISSUE DATE: 2023/06/02

Disclaimer: Drawings are not to scale. Materials, specifications, & floor plans are subject to change without notice. All renderings are artist's conceptions. All areas and stated room dimensions are approximate. Actual usable floor space may vary from the stated floor area. Floor area measured in accordance with Home Construction Regulatory Authority Directive. E.&O.E. Balcony sizes and configurations vary depending on floor level locations.

SUITE 1210



SUITE TYPE: 1B
 SUITE AREA: 547 SQFT
 BALCONY / TERRACE: 150 SQFT



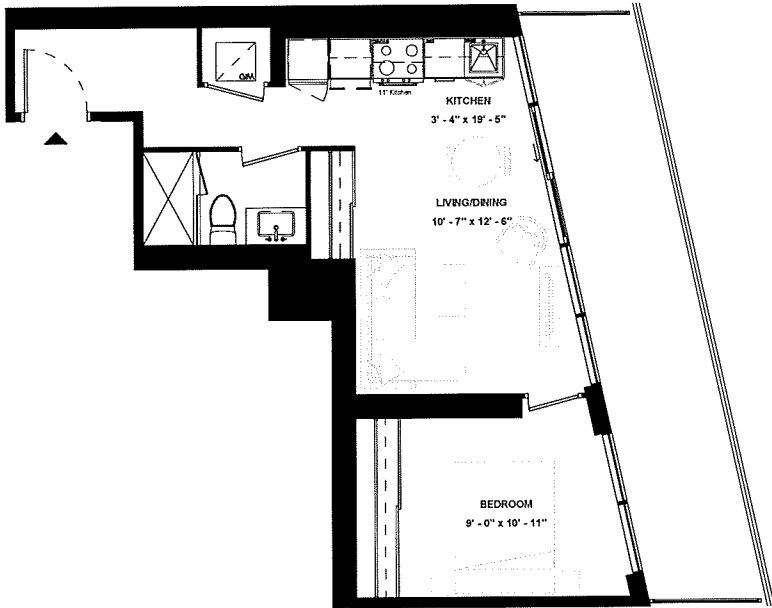
LEVEL 12



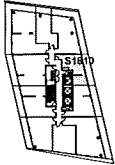
ISSUE DATE: 2023/06/02

Disclaimer: Drawings are not to scale. Materials, specifications, & floor plans are subject to change without notice. All renderings are artist's conceptions. All areas and stated room dimensions are approximate. Actual usable floor space may vary from the stated floor area. Floor area measured in accordance with Home Construction Regulatory Authority Directive, E.&O.E. Balcony sizes and configurations vary depending on floor level locations.

SUITE 1810



SUITE TYPE: 1B
 SUITE AREA: 547 SQFT
 BALCONY / TERRACE: 167 SQFT



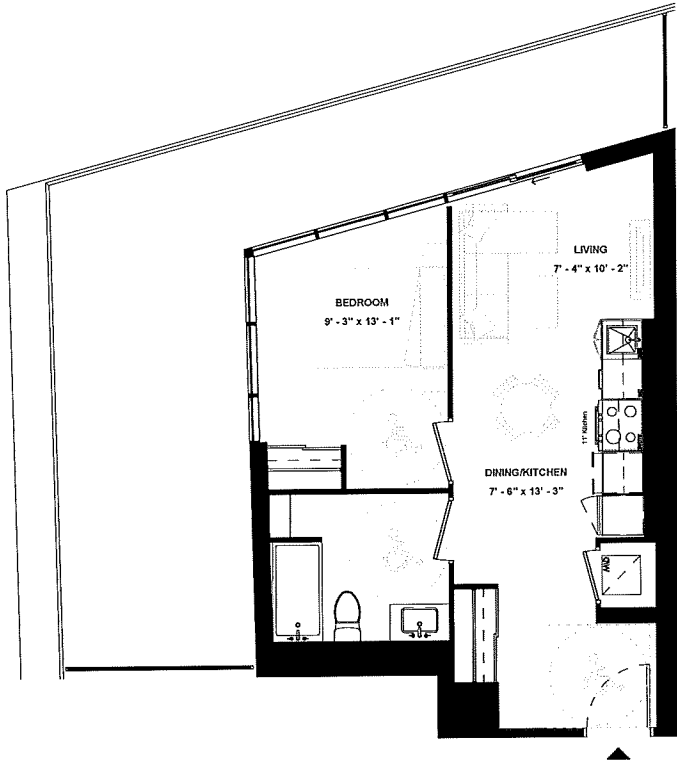
LEVEL 18



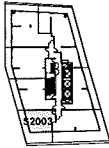
ISSUE DATE: 2023/06/02

Disclaimer: Drawings are not to scale. Materials, specifications, & floor plans are subject to change without notice. All renderings are artist's conceptions. All areas and stated room dimensions are approximate. Actual usable floor space may vary from the stated floor area. Floor area measured in accordance with Home Construction Regulatory Authority Directive, E.&O.E. Balcony sizes and configurations vary depending on floor level locations.

SUITE 2003



SUITE TYPE: 1B (BF)
 SUITE AREA: 549 SQFT
 BALCONY / TERRACE: 363 SQFT



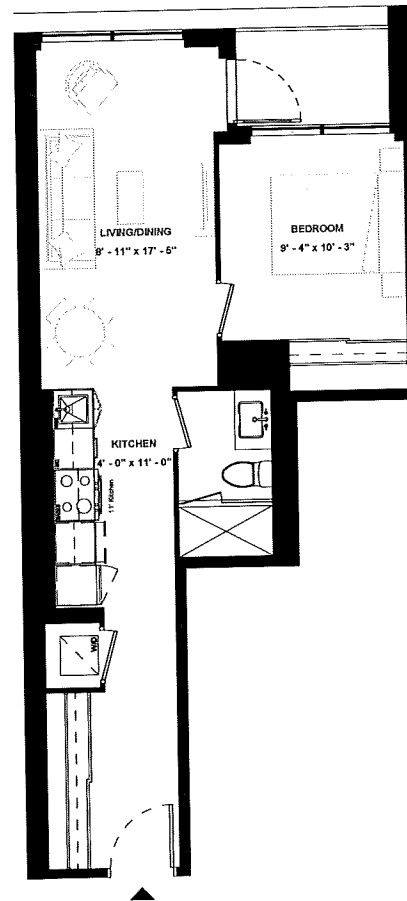
LEVEL 20



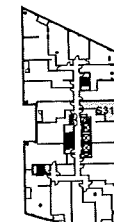
ISSUE DATE: 2023/06/02

Disclaimer: Drawings are not to scale. Materials, specifications, & floor plans are subject to change without notice. All renderings are artist's conceptions. All areas and stated room dimensions are approximate. Actual usable floor space may vary from the stated floor area. Floor area measured in accordance with Home Construction Regulatory Authority Directive, E & O.E. Balcony sizes and configurations vary depending on floor level locations.

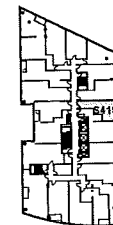
**SUITE 319 &
SUITE 419 &
SUITE 519**



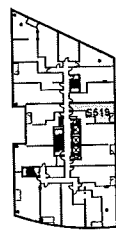
SUITE TYPE: 1B
 SUITE AREA: 554 SQFT
 BALCONY / TERRACE: 35 SQFT



LEVEL 03



LEVEL 04

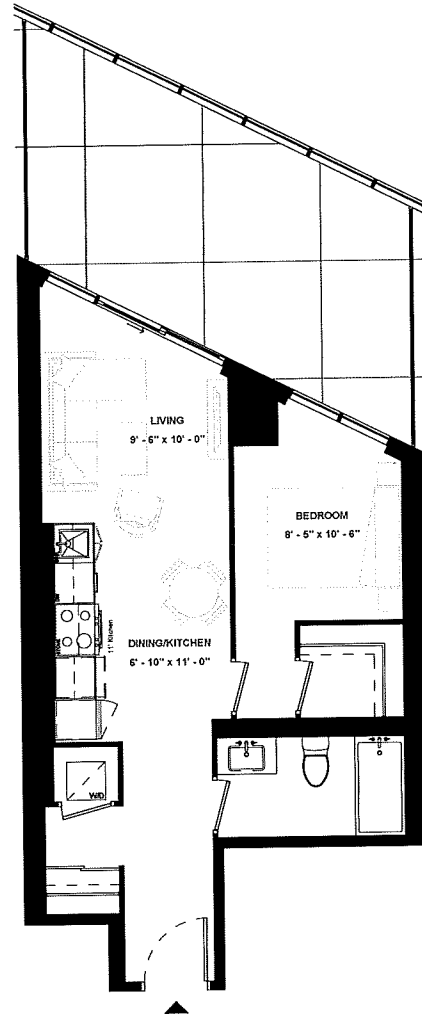


LEVEL 05

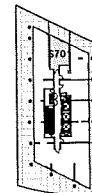
ISSUE DATE: 2023/06/02



SUITE 701



SUITE TYPE: 1B
SUITE AREA: 554 SQFT
BALCONY / TERRACE: 234 SQFT

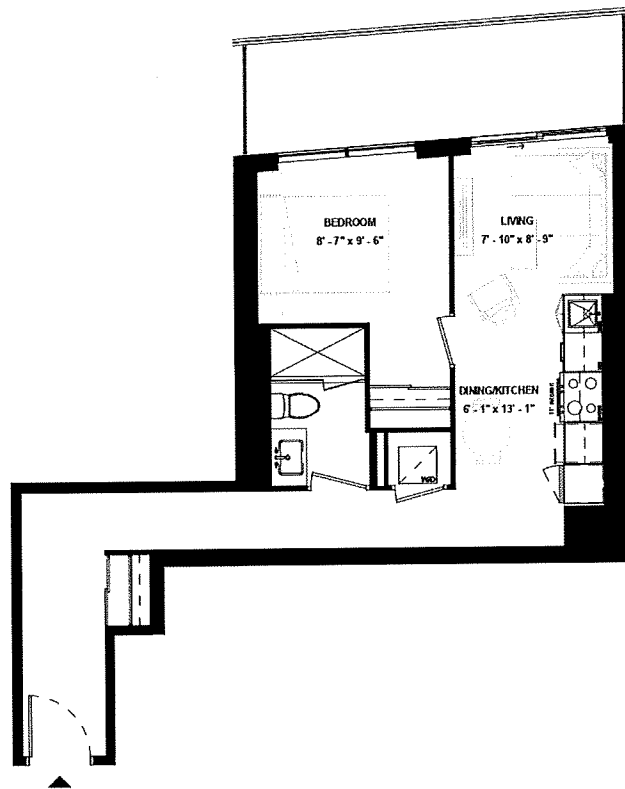


LEVEL 07

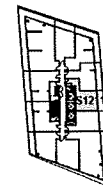


ISSUE DATE: 2023/06/02

SUITE 1211



SUITE TYPE: 1B
SUITE AREA: 557 SQFT
BALCONY / TERRACE: 109 SQFT



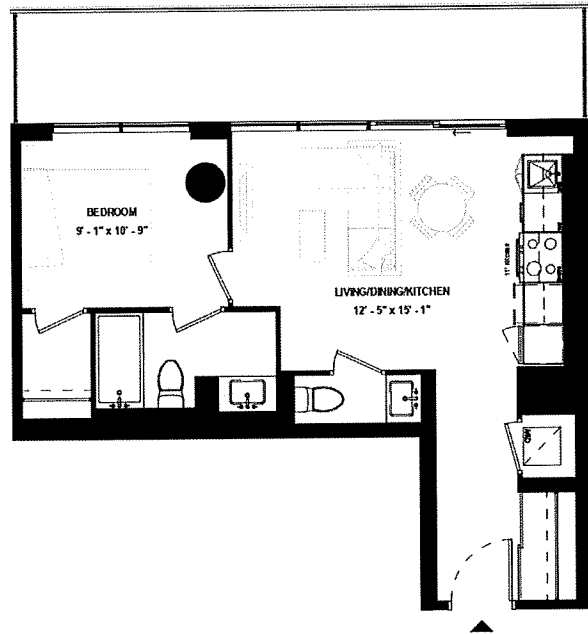
LEVEL 12



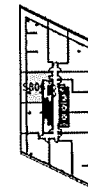
ISSUE DATE: 2023/06/02

Disclaimer: Drawings are not to scale. Materials, specifications, & floor plans are subject to change without notice. All renderings are artist's conceptions. All areas and stated room dimensions are approximate. Actual usable floor space may vary from the stated floor area. Floor area measured in accordance with Home Construction Regulatory Authority Directive, E.&O.E. Balcony sizes and configurations vary depending on floor level locations.

SUITE 806



SUITE TYPE: 1B
SUITE AREA: 569 SQFT
BALCONY / TERRACE: 163 SQFT



LEVEL 08

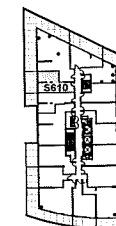
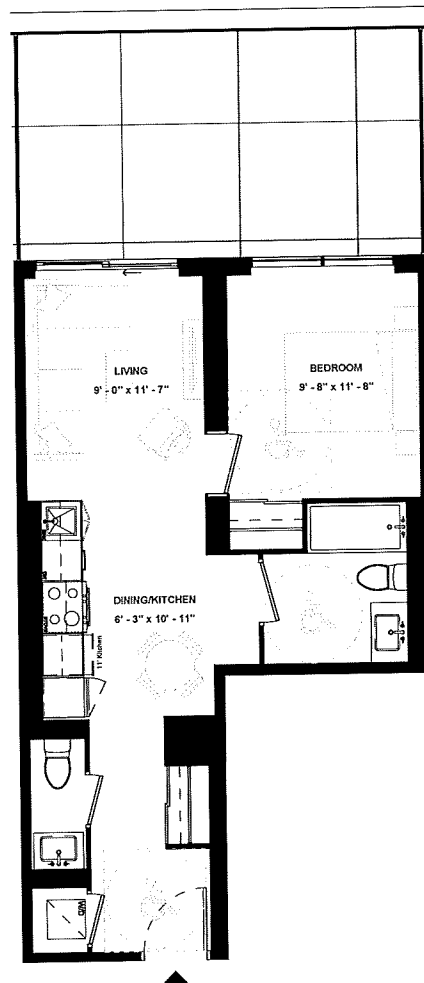


ISSUE DATE: 2023/06/02

Disclaimer: Drawings are not to scale. Materials, specifications, & floor plans are subject to change without notice. All renderings are artist's conceptions. All areas and stated room dimensions are approximate. Actual usable floor space may vary from the stated floor area. Floor area measured in accordance with Home Construction Regulatory Authority Directive, E&O E. Balcony sizes and configurations vary depending on floor level locations.

SUITE 610

SUITE TYPE: 1B (BF)
 SUITE AREA: 571 SQFT
 BALCONY / TERRACE: 228 SQFT

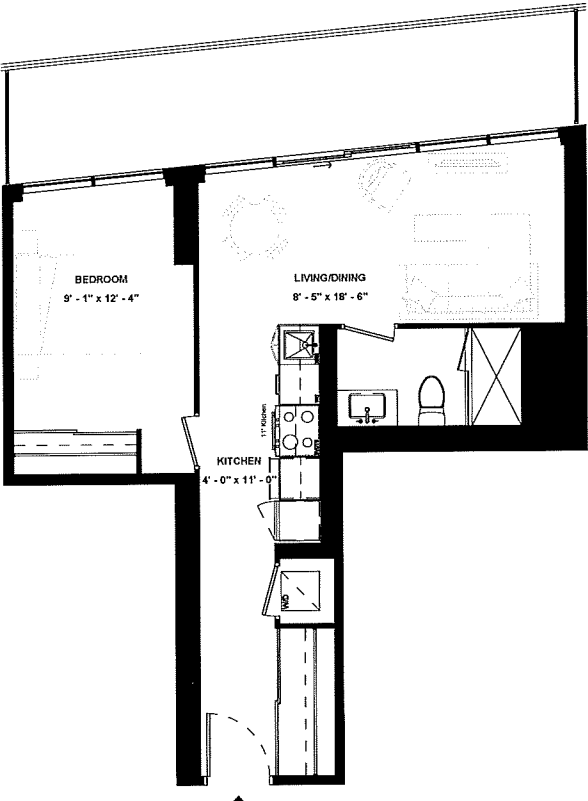


LEVEL 06

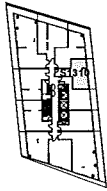
ISSUE DATE: 2023/06/02



SUITE 1310



SUITE TYPE: 1B
 SUITE AREA: 571 SQFT
 BALCONY / TERRACE: 159 SQFT



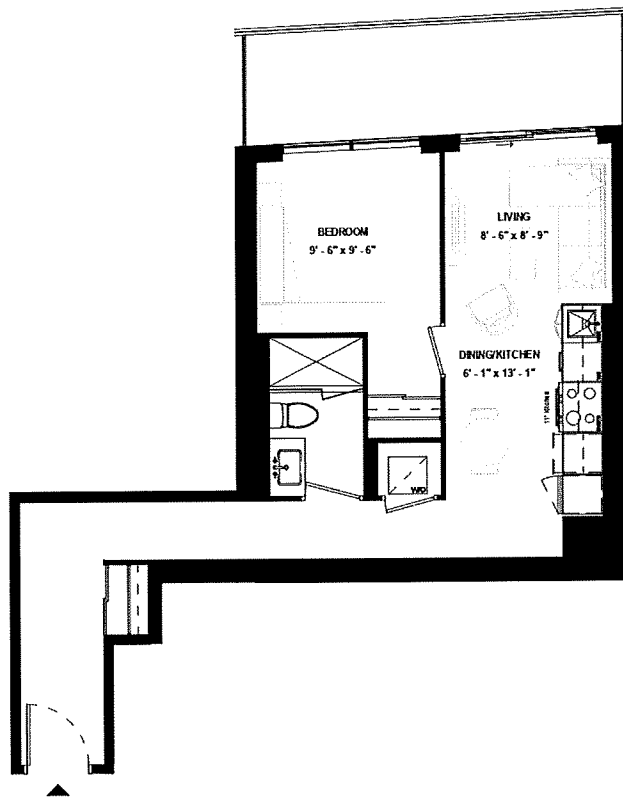
LEVEL 13



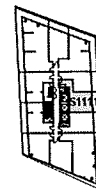
ISSUE DATE: 2023/06/02

Disclaimer: Drawings are not to scale. Materials, specifications, & floor plans are subject to change without notice. All renderings are artist's conceptions. All areas and stated room dimensions are approximate. Actual usable floor space may vary from the stated floor area. Floor area measured in accordance with Home Construction Regulatory Authority Directive, E.&O.E. Balcony sizes and configurations vary depending on floor level locations.

SUITE 1111



SUITE TYPE: 1B
SUITE AREA: 672 SQFT
BALCONY / TERRACE: 109 SQFT



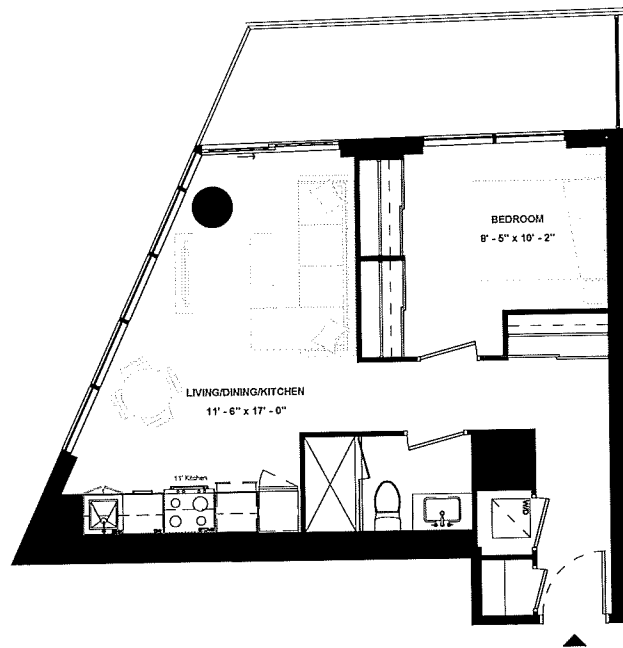
LEVEL 11



ISSUE DATE: 2023/06/02

Disclaimer: Drawings are not to scale. Materials, specifications, & floor plans are subject to change without notice. All renderings are artist's conceptions. All areas and stated room dimensions are approximate. Actual usable floor space may vary from the stated floor area. Floor area measured in accordance with Home Construction Regulatory Authority Directive, E.&O.E. Balcony sizes and configurations vary depending on floor level locations.

SUITE 1004



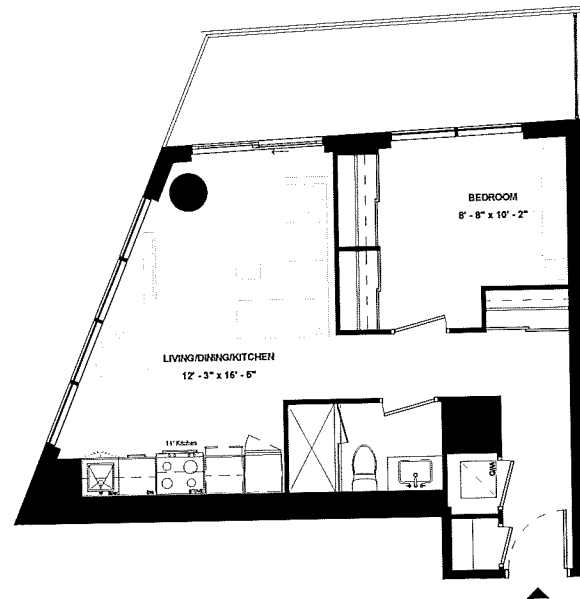
SUITE TYPE: 1B
SUITE AREA: 576 SQFT
BALCONY / TERRACE: 108 SQFT



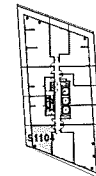
ISSUE DATE: 2023/06/02

LEVEL 10

SUITE 1104



SUITE TYPE: 1B
SUITE AREA: 579 SQFT
BALCONY / TERRACE: 116 SQFT



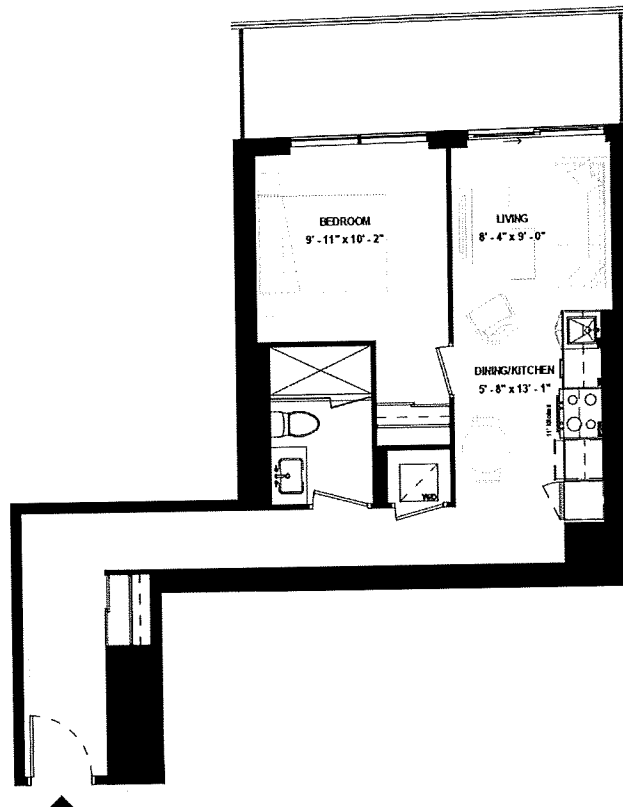
LEVEL 11



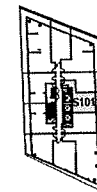
ISSUE DATE: 2023/06/02

Disclaimer: Drawings are not to scale. Materials, specifications, & floor plans are subject to change without notice. All renderings are artist's conceptions. All areas and stated room dimensions are approximate. Actual usable floor space may vary from the stated floor area. Floor area measured in accordance with Home Construction Regulatory Authority Directive, E.&O.E. Balcony sizes and configurations vary depending on floor level locations.

SUITE 1011



SUITE TYPE: 1B
SUITE AREA: 584 SQFT
BALCONY / TERRACE: 109 SQFT



LEVEL 10

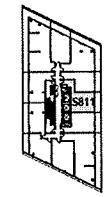
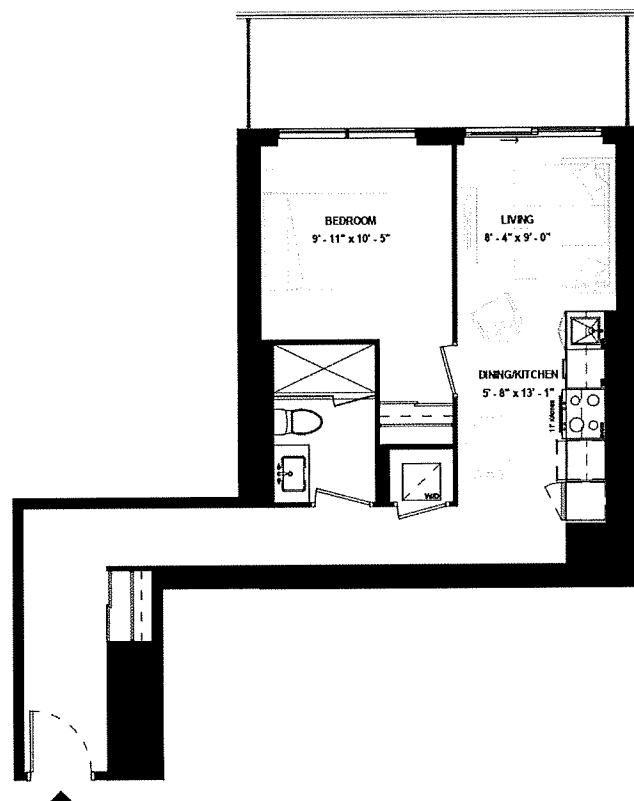


ISSUE DATE: 2023/06/02

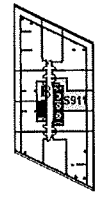
Disclaimer: Drawings are not to scale. Materials, specifications, & floor plans are subject to change without notice. All renderings are artist's conceptions. All areas and stated room dimensions are approximate. Actual usable floor space may vary from the stated floor area. Floor area measured in accordance with Home Construction Regulatory Authority Directive. E.&O.E. Balcony sizes and configurations vary depending on floor level locations.

SUITE 811 & SUITE 911

SUITE TYPE: 1B
 SUITE AREA: 586 SQFT
 BALCONY / TERRACE: 109 SQFT



LEVEL 08



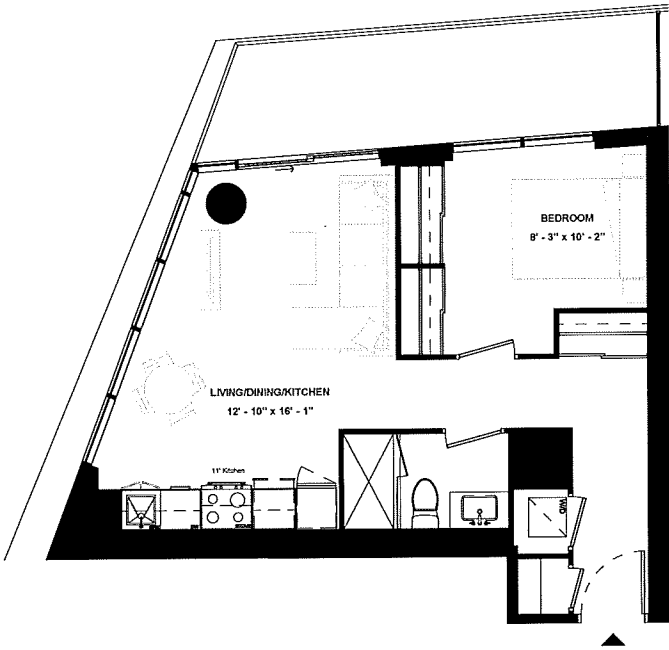
LEVEL 09

ISSUE DATE: 2023/06/02

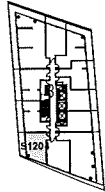


Disclaimer: Drawings are not to scale. Materials, specifications, & floor plans are subject to change without notice. All renderings are artist's conceptions. All areas and stated room dimensions are approximate. Actual usable floor space may vary from the stated floor area. Floor area measured in accordance with Home Construction Regulatory Authority Directive, E.80 E. Balcony sizes and configurations vary depending on floor level locations.

SUITE 1204



SUITE TYPE: 1B
SUITE AREA: 586 SQFT
BALCONY / TERRACE: 122 SQFT



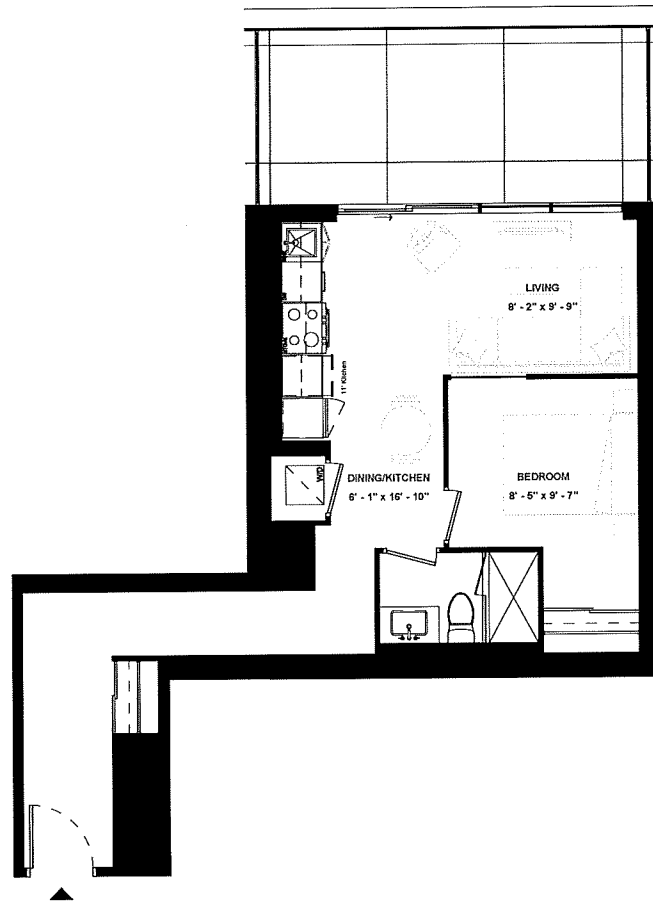
LEVEL 12



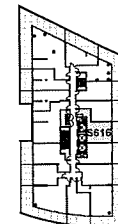
ISSUE DATE: 2023/06/02

Disclaimer: Drawings are not to scale. Materials, specifications, & floor plans are subject to change without notice. All renderings are artist's conceptions. All areas and stated room dimensions are approximate. Actual usable floor space may vary from the stated floor area. Floor area measured in accordance with Home Construction Regulatory Authority Directive, E.&O.E. Balcony sizes and configurations vary depending on floor level locations.

SUITE 616



SUITE TYPE: 1B
SUITE AREA: 592 SQFT
BALCONY / TERRACE: 167 SQFT

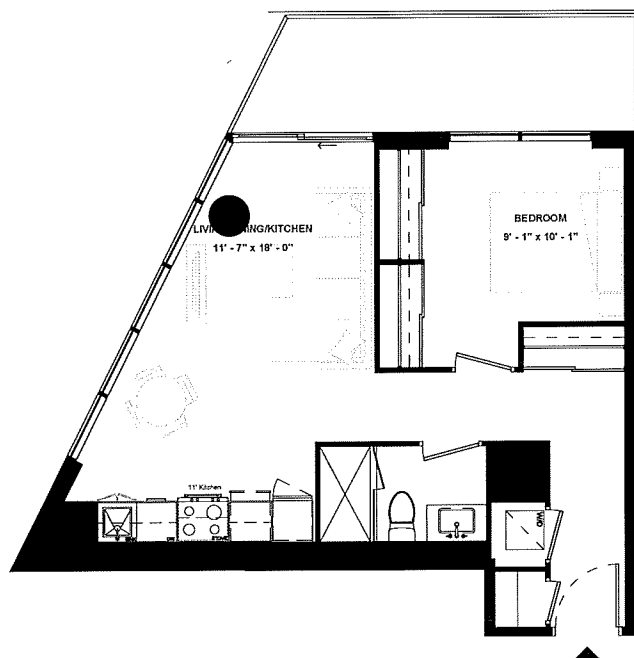


LEVEL 06



ISSUE DATE: 2023/06/02

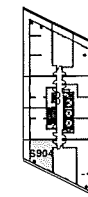
SUITE 904



SUITE TYPE: 1B
SUITE AREA: 599 SQFT
BALCONY / TERRACE: 104 SQFT

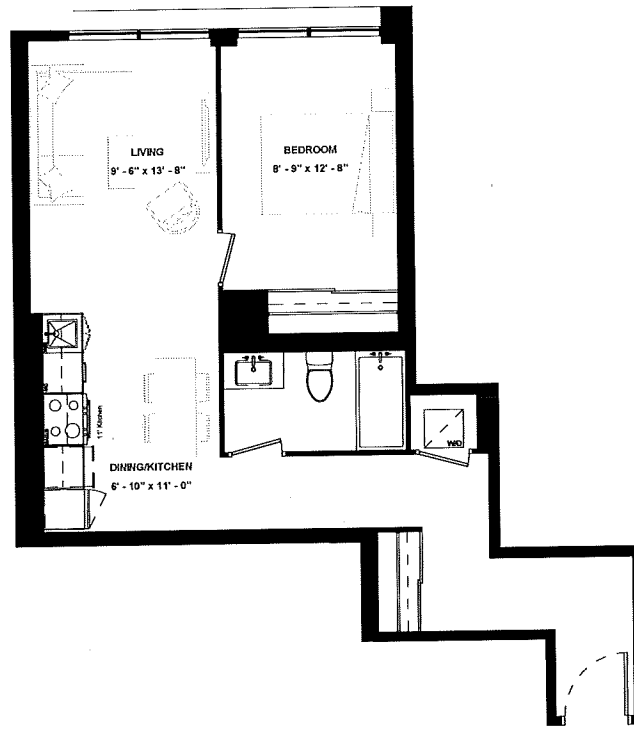


ISSUE DATE: 2023/06/02



LEVEL 09

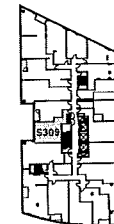
**SUITE 309 &
SUITE 409 &
SUITE 509**



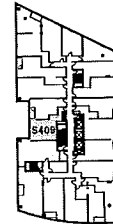
SUITE TYPE: 1B
 SUITE AREA: 650 SQFT
 BALCONY / TERRACE: N/A SQFT



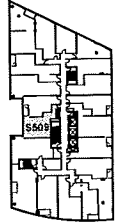
ISSUE DATE: 2023/06/02



LEVEL 03



LEVEL 04



LEVEL 05