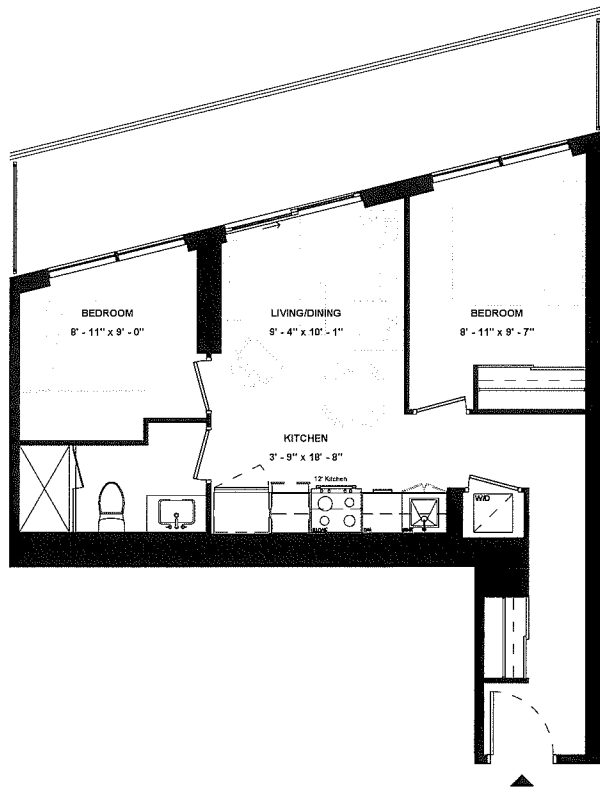


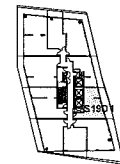
# SUITE 1901



SUITE TYPE: 2B  
SUITE AREA: 604 SQFT  
BALCONY / TERRACE: 168 SQFT

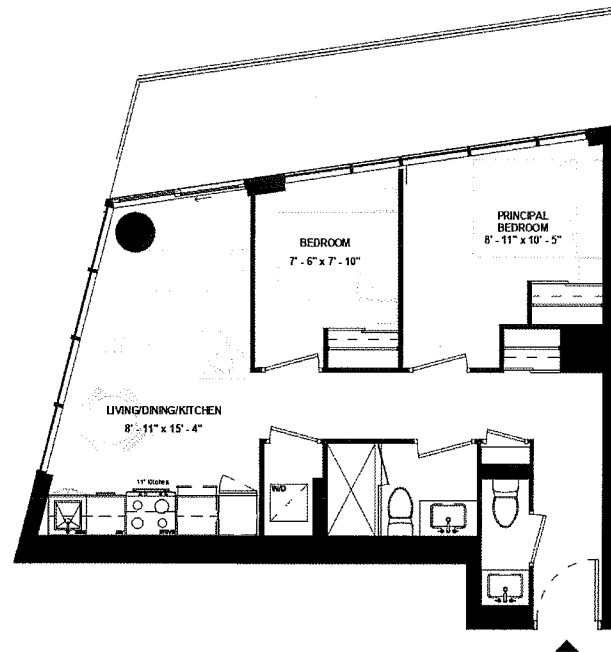


ISSUE DATE: 2023/06/02

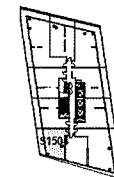


LEVEL 19

# SUITE 1504



SUITE TYPE: 2B  
SUITE AREA: 623 SQFT  
BALCONY / TERRACE: 142 SQFT



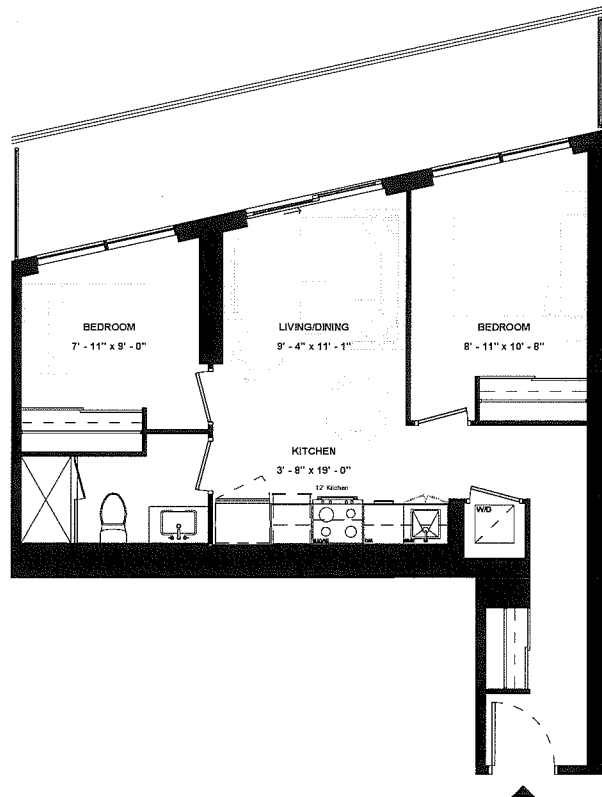
LEVEL 15



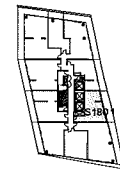
ISSUE DATE: 2023/06/02

Disclaimer: Drawings are not to scale. Materials, specifications, & floor plans are subject to change without notice. All renderings are artist's conceptions. All areas and stated room dimensions are approximate. Actual usable floor space may vary from the stated floor area. Floor area measured in accordance with Home Construction Regulatory Authority Directive. E.&O.E. Balcony sizes and configurations vary depending on floor level locations.

# SUITE 1801



SUITE TYPE: 2B  
SUITE AREA: 634 SQFT  
BALCONY / TERRACE: 167 SQFT



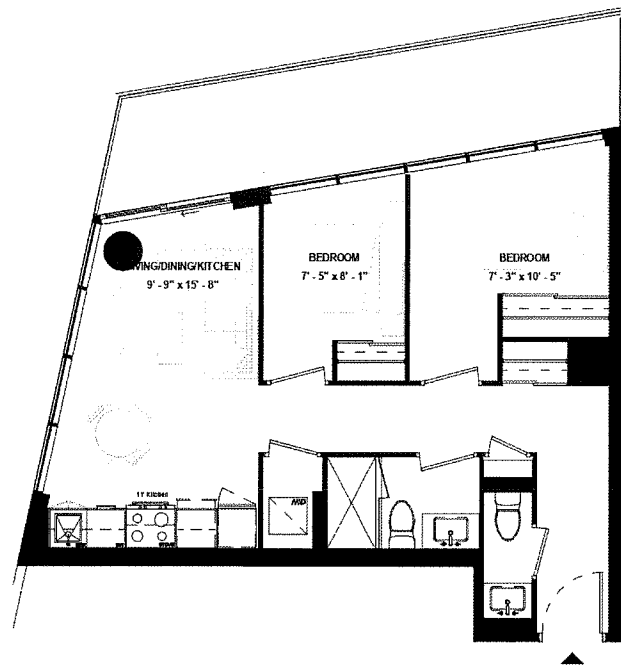
LEVEL 18



ISSUE DATE: 2023/06/02

Disclaimer: Drawings are not to scale. Materials, specifications, & floor plans are subject to change without notice. All renderings are artist's conceptions. All areas and stated room dimensions are approximate. Actual usable floor space may vary from the stated floor area. Floor area measured in accordance with Home Construction Regulatory Authority Directive, E.&O.E. Balcony sizes and configurations vary depending on floor level locations.

# SUITE 1604



SUITE TYPE: 2B  
SUITE AREA: 643 SQFT  
BALCONY / TERRACE: 149 SQFT

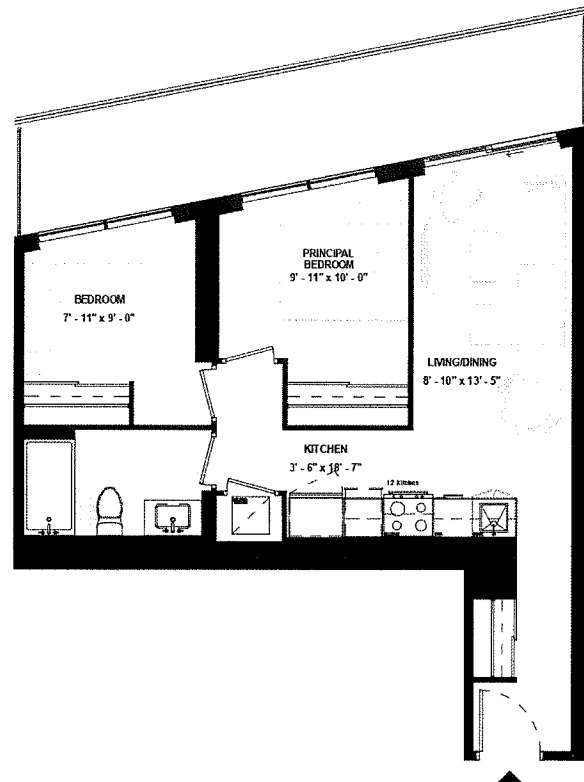


ISSUE DATE: 2023/06/02

LEVEL 16

Disclaimer: Drawings are not to scale. Materials, specifications, & floor plans are subject to change without notice. All renderings are artist's conceptions. All areas and stated room dimensions are approximate. Actual usable floor space may vary from the stated floor area. Floor area measured in accordance with Home Construction Regulatory Authority Directive, E.&O.E. Balcony sizes and configurations vary depending on floor level locations.

# SUITE 1701



SUITE TYPE: 2B  
SUITE AREA: 661 SQFT  
BALCONY / TERRACE: 166 SQFT

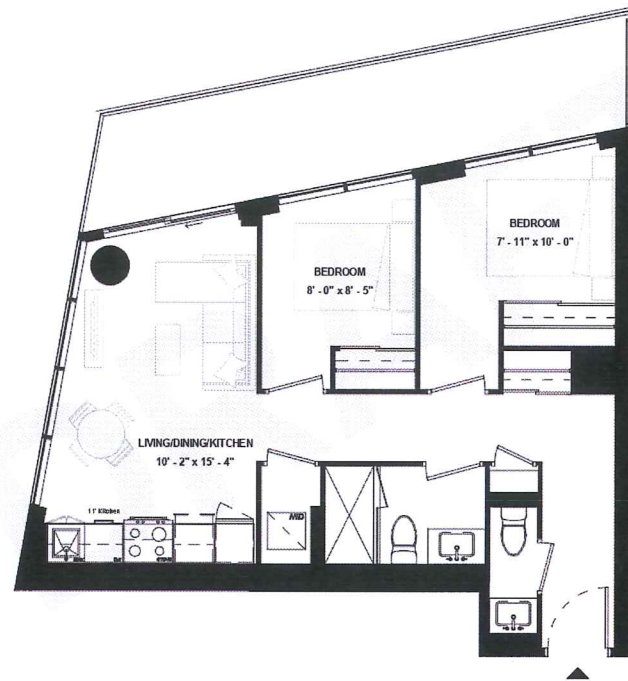


ISSUE DATE: 2023/06/02

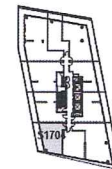
Disclaimer: Drawings are not to scale. Materials, specifications, & floor plans are subject to change without notice. All renderings are artist's conceptions. All areas and stated room dimensions are approximate. Actual usable floor space may vary from the stated floor area. Floor area measured in accordance with Home Construction Regulatory Authority Directive. E.&O.E. Balcony sizes and configurations vary depending on floor level locations.

LEVEL 17

# SUITE 1704



SUITE TYPE: 2B  
SUITE AREA: 666 SQFT  
BALCONY / TERRACE: 156 SQFT



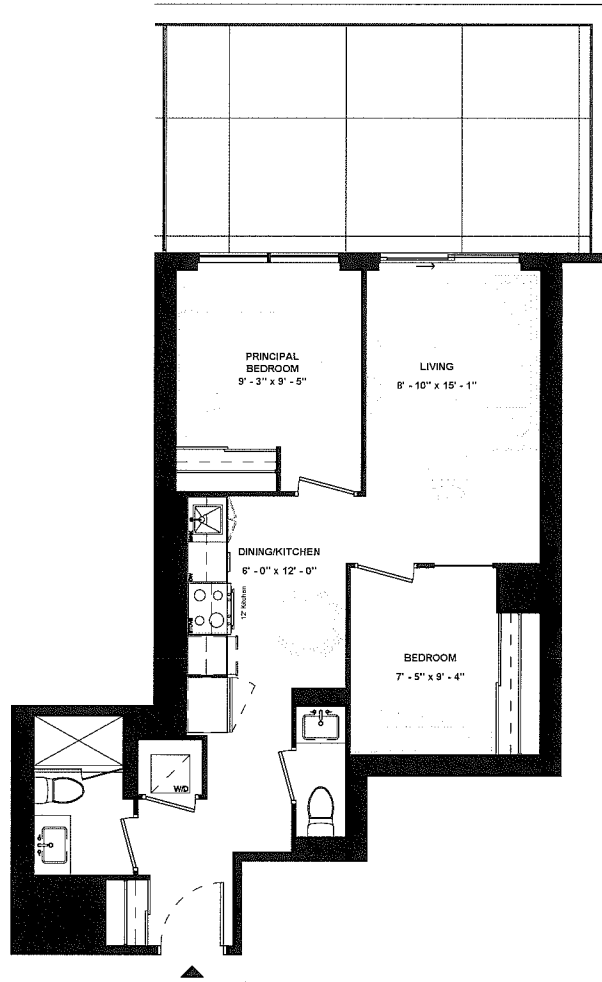
LEVEL 17



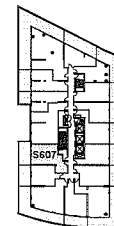
ISSUE DATE: 2023/06/02

Disclaimer: Drawings are not to scale. Materials, specifications, & floor plans are subject to change without notice. All renderings are artist's conceptions. All areas and stated room dimensions are approximate. Actual usable floor space may vary from the stated floor area. Floor area measured in accordance with Home Construction Regulatory Authority Directive, E&O.E. Balcony sizes and configurations vary depending on floor level locations.

# SUITE 607



SUITE TYPE: 2B  
SUITE AREA: 682 SQFT  
BALCONY / TERRACE: 236 SQFT



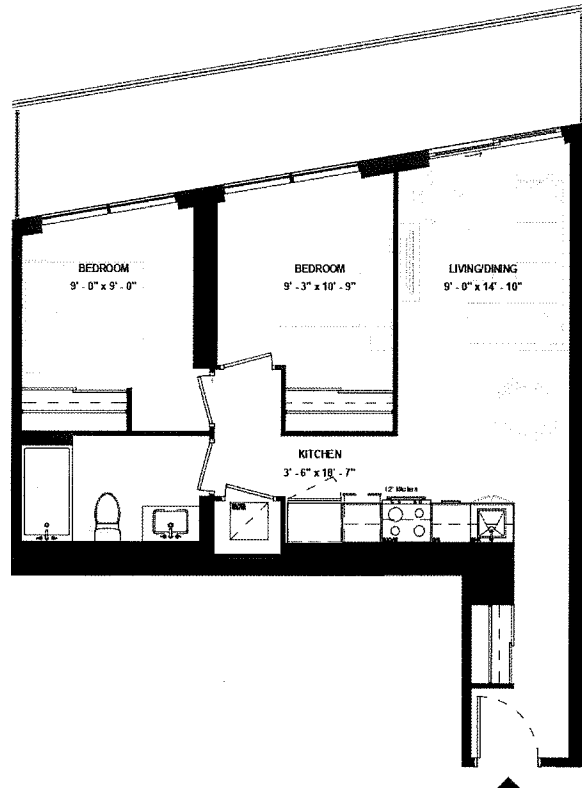
LEVEL 06



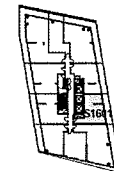
ISSUE DATE: 2023/06/02

Disclaimer: Drawings are not to scale. Materials, specifications, & floor plans are subject to change without notice. All renderings are artist's conceptions. All areas and stated room dimensions are approximate. Actual usable floor space may vary from the stated floor area. Floor area measured in accordance with Home Construction Regulatory Authority Directive, E.&O.E. Balcony sizes and configurations vary depending on floor level locations.

# SUITE 1601



SUITE TYPE: 2B  
SUITE AREA: 685 SQFT  
BALCONY / TERRACE: 166 SQFT



LEVEL 16

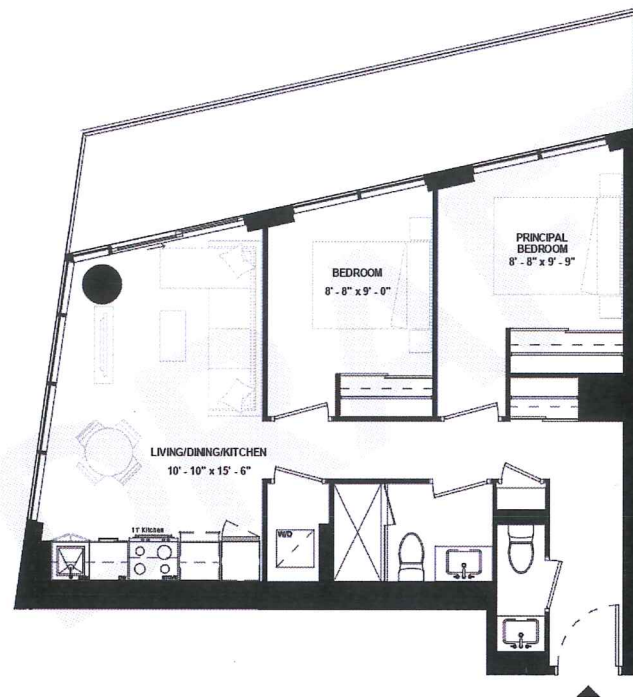


ISSUE DATE: 2023/06/02

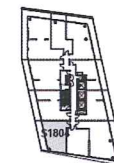
Disclaimer: Drawings are not to scale. Materials, specifications, & floor plans are subject to change without notice. All renderings are artist's conceptions. All areas and stated room dimensions are approximate. Actual usable floor space may vary from the stated floor area. Floor area measured in accordance with Home Construction Regulatory Authority Directive, E.&O.E. Balcony sizes and configurations vary depending on floor level locations.



# SUITE 1804



SUITE TYPE: 2B  
SUITE AREA: 694 SQFT  
BALCONY / TERRACE: 164 SQFT



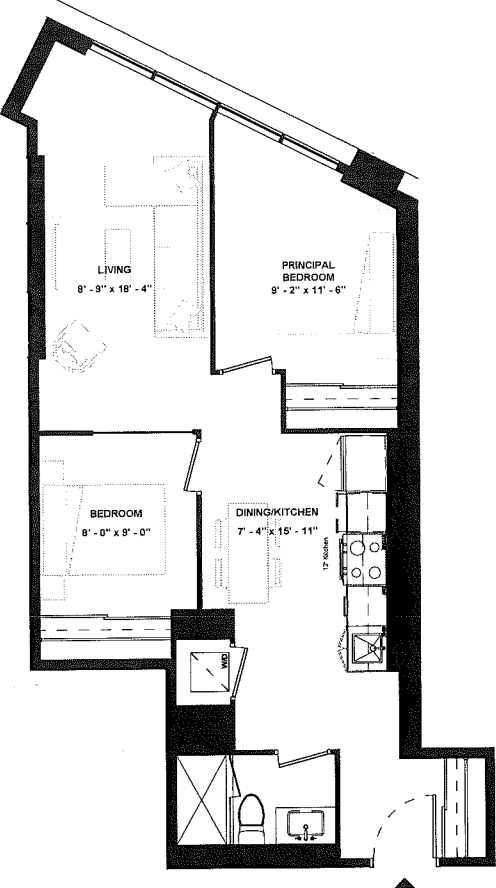
LEVEL 18



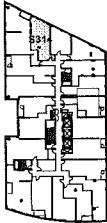
ISSUE DATE: 2023/06/02

Disclaimer: Drawings are not to scale. Materials, specifications, & floor plans are subject to change without notice. All renderings are artist's conceptions. All areas and stated room dimensions are approximate. Actual usable floor space may vary from the stated floor area. Floor area measured in accordance with Home Construction Regulatory Authority Directive. E.S.O.E. Balcony sizes and configurations vary depending on floor level locations.

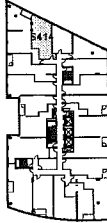
**SUITE 314 &  
SUITE 414 &  
SUITE 514**



SUITE TYPE: 2B  
 SUITE AREA: 657 SQFT  
 BALCONY / TERRACE: N/A SQFT



LEVEL 03



LEVEL 04



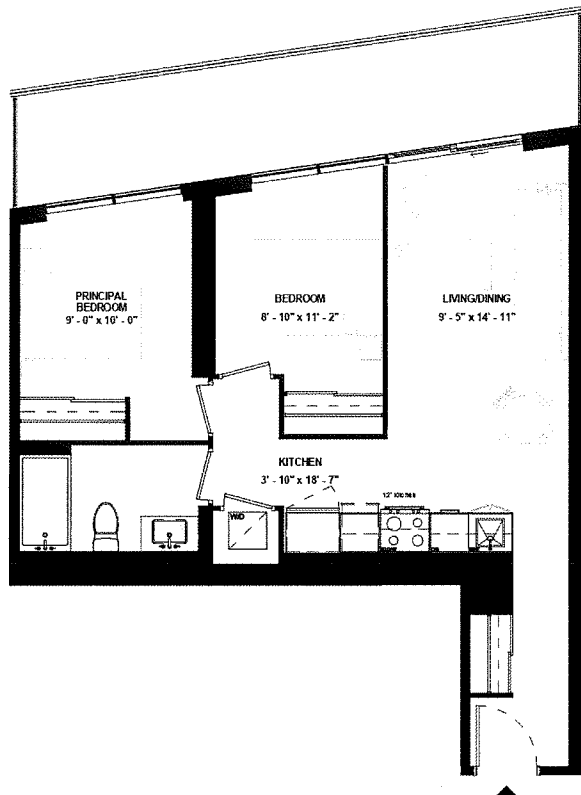
LEVEL 05



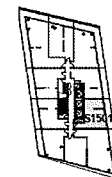
ISSUE DATE: 2023/06/02

Disclaimer: Drawings are not to scale. Materials, specifications, & floor plans are subject to change without notice. All renderings are artist's conceptions. All areas and stated room dimensions are approximate. Actual usable floor space may vary from the stated floor area. Floor area measured in accordance with Home Construction Regulatory Authority Directive: E.&O.E. Balcony sizes and configurations vary depending on floor level locations.

# SUITE 1501



SUITE TYPE: 2B  
SUITE AREA: 707 SQFT  
BALCONY / TERRACE: 165 SQFT



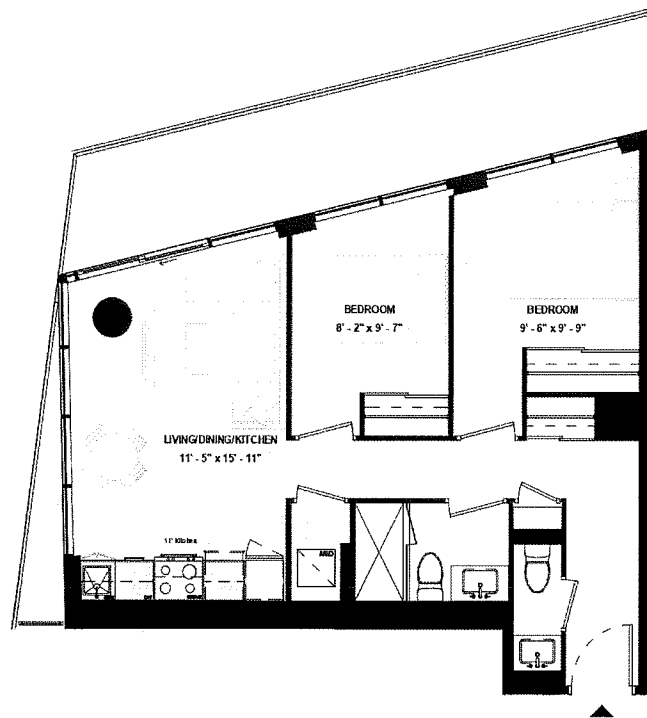
LEVEL 15



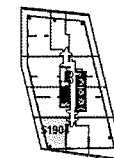
ISSUE DATE: 2023/06/02

Disclaimer: Drawings are not to scale. Materials, specifications, & floor plans are subject to change without notice. All renderings are artist's conceptions. All areas and stated room dimensions are approximate. Actual usable floor space may vary from the stated floor area. Floor area measured in accordance with Home Construction Regulatory Authority Directive. E.&O.E. Balcony sizes and configurations vary depending on floor level locations.

# SUITE 1904



SUITE TYPE: 2B  
SUITE AREA: 708 SQFT  
BALCONY / TERRACE: 172 SQFT



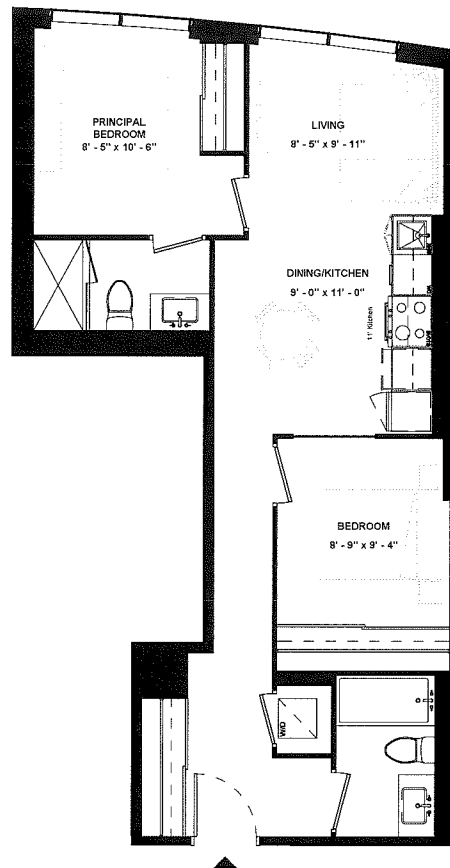
LEVEL 19



ISSUE DATE: 2023/06/02

Disclaimer: Drawings are not to scale. Materials, specifications, & floor plans are subject to change without notice. All renderings are artist's conceptions. All areas and stated room dimensions are approximate. Actual usable floor space may vary from the stated floor area. Floor area measured in accordance with Home Construction Regulatory Authority Directive, E&O.E. Balcony sizes and configurations vary depending on floor level locations.

# SUITE 205



SUITE TYPE: 2B  
SUITE AREA: 715 SQFT  
BALCONY / TERRACE: N/A SQFT



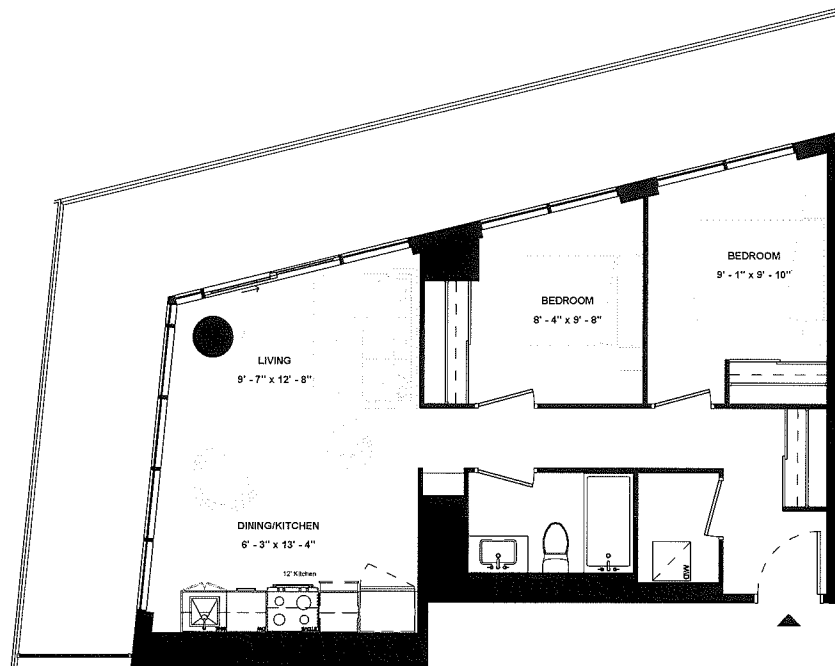
LEVEL 02



ISSUE DATE: 2023/06/02

Disclaimer: Drawings are not to scale. Materials, specifications, & floor plans are subject to change without notice. All renderings are artist's conceptions. All areas and stated room dimensions are approximate. Actual usable floor space may vary from the stated floor area. Floor area measured in accordance with Home Construction Regulatory Authority Directive, E.&O.E. Balcony sizes and configurations vary depending on floor level locations.

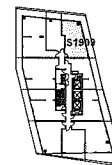
# SUITE 1909



SUITE TYPE: 2B  
SUITE AREA: 715 SQFT  
BALCONY / TERRACE: 320 SQFT

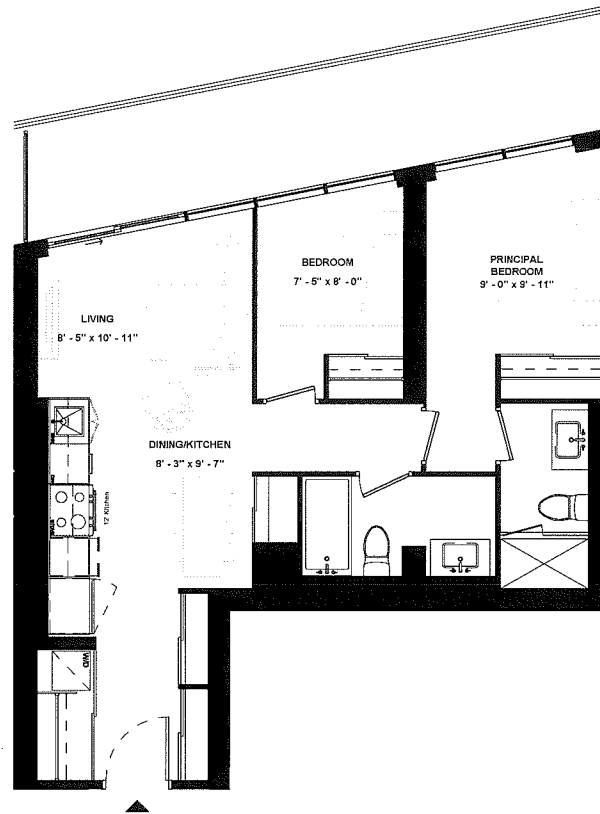


ISSUE DATE: 2023/06/02

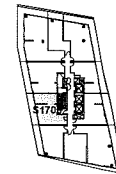


LEVEL 19

# SUITE 1705



SUITE TYPE: 2B  
SUITE AREA: 732 SQFT  
BALCONY / TERRACE: 166 SQFT



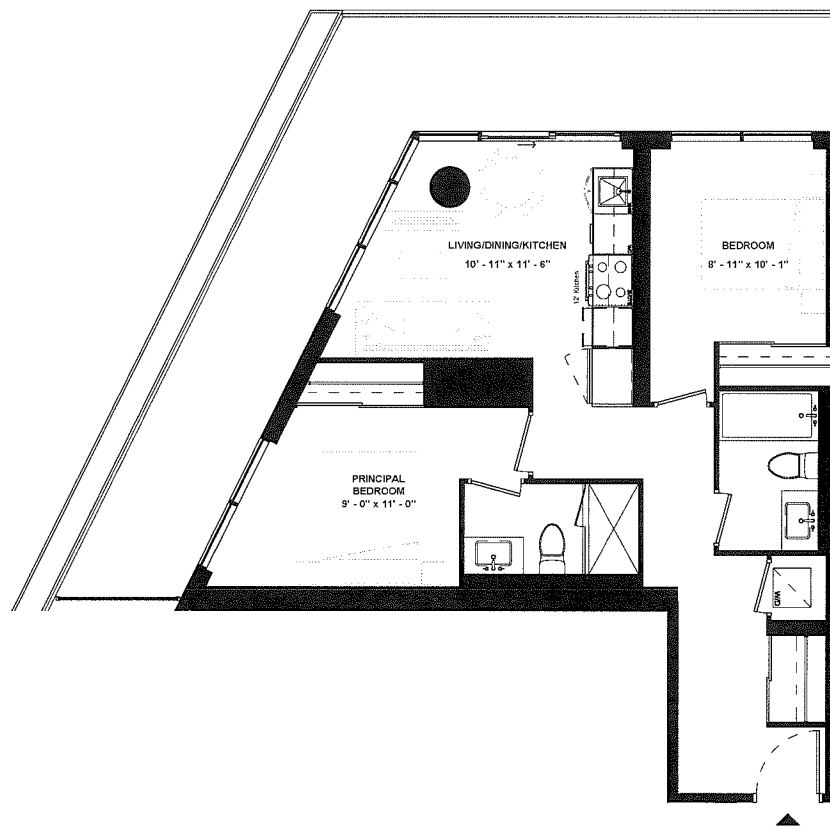
LEVEL 17



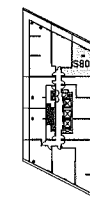
ISSUE DATE: 2023/06/02

Disclaimer: Drawings are not to scale. Materials, specifications, & floor plans are subject to change without notice. All renderings are artist's conceptions. All areas and stated room dimensions are approximate. Actual usable floor space may vary from the stated floor area. Floor area measured in accordance with Home Construction Regulatory Authority Directive, E.40.E. Balcony sizes and configurations vary depending on floor level locations.

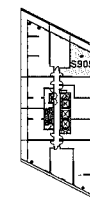
# SUITE 809 & SUITE 909



SUITE TYPE: 2B  
 SUITE AREA: 738 SQFT  
 BALCONY / TERRACE: 291 SQFT



LEVEL 08



LEVEL 09

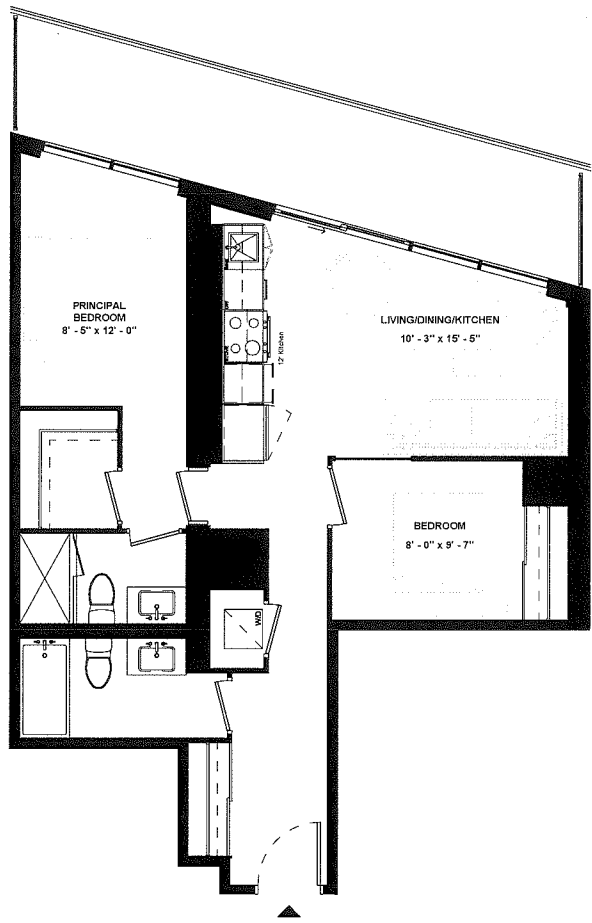


ISSUE DATE: 2023/06/02

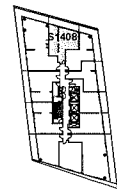
Disclaimer: Drawings are not to scale. Materials, specifications, & floor plans are subject to change without notice. All renderings are artist's conceptions. All areas and stated room dimensions are approximate. Actual usable floor space may vary from the stated floor area. Floor area measured in accordance with Home Construction Regulatory Authority Directive, E.&O.E. Balcony sizes and configurations vary depending on floor level locations.



# SUITE 1408



SUITE TYPE: 2B  
SUITE AREA: 755 SQFT  
BALCONY / TERRACE: 165 SQFT



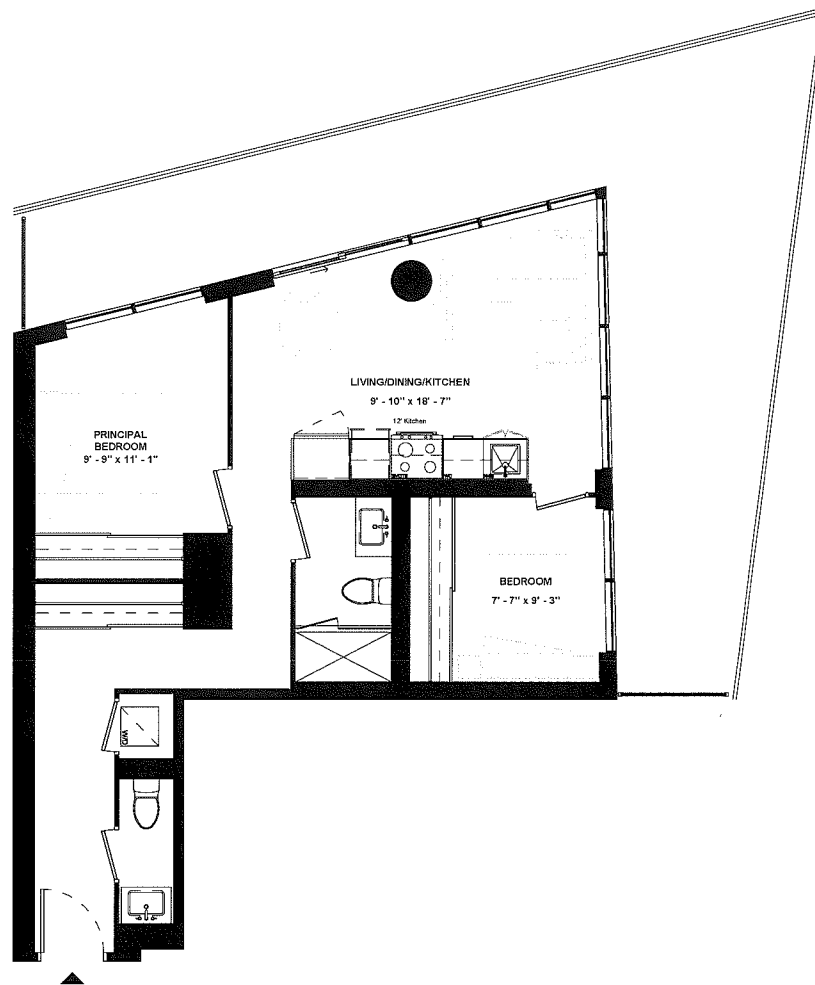
LEVEL 14



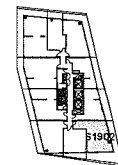
ISSUE DATE: 2023/06/02

Disclaimer: Drawings are not to scale. Materials, specifications, & floor plans are subject to change without notice. All renderings are artist's conceptions. All areas and stated room dimensions are approximate. Actual usable floor space may vary from the stated floor area. Floor area measured in accordance with Home Construction Regulatory Authority Directive, E.&O.E. Balcony sizes and configurations vary depending on floor level locations.

# SUITE 1902



SUITE TYPE: 2B  
SUITE AREA: 766 SQFT  
BALCONY / TERRACE: 432 SQFT



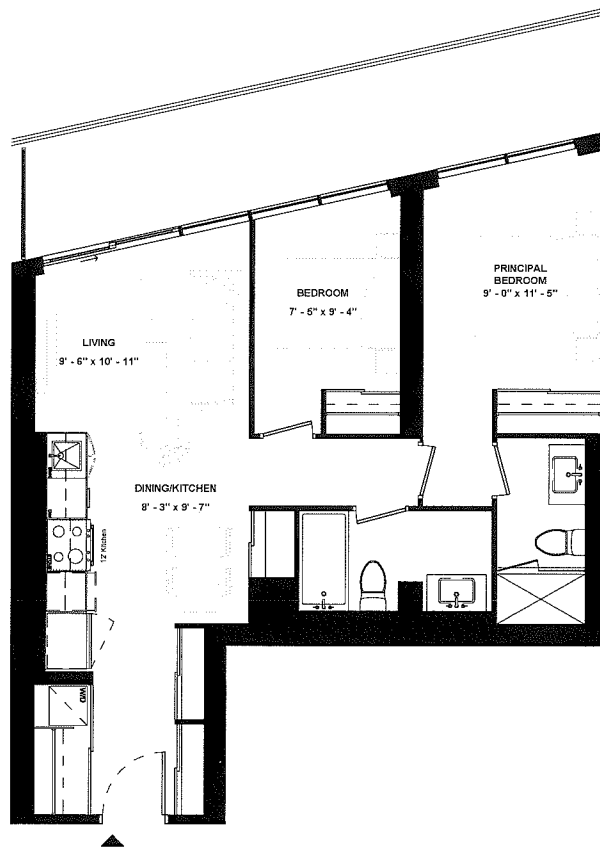
LEVEL 19



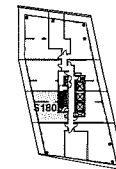
ISSUE DATE: 2023/06/02

Disclaimer: Drawings are not to scale. Materials, specifications, & floor plans are subject to change without notice. All renderings are artist's conceptions. All areas and stated room dimensions are approximate. Actual usable floor space may vary from the stated floor area. Floor area measured in accordance with Home Construction Regulatory Authority Directive, E.&O.E. Balcony sizes and configurations vary depending on floor level locations.

# SUITE 1805



SUITE TYPE: 2B  
SUITE AREA: 768 SQFT  
BALCONY / TERRACE: 167 SQFT



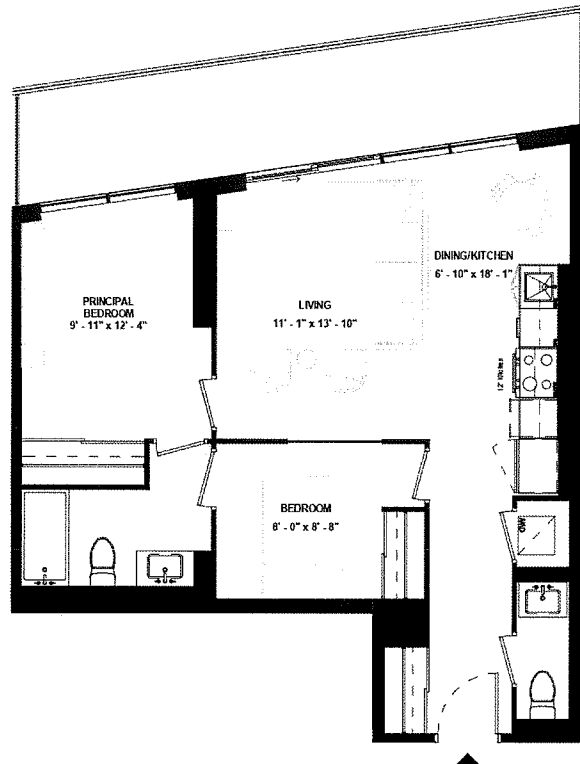
LEVEL 18



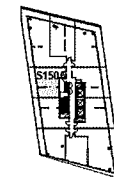
ISSUE DATE: 2023/06/02

Disclaimer: Drawings are not to scale. Materials, specifications, & floor plans are subject to change without notice. All renderings are artist's conceptions. All areas and stated room dimensions are approximate. Actual useable floor space may vary from the stated floor area. Floor area measured in accordance with Home Construction Regulatory Authority Directive, E.&O.E. Balcony sizes and configurations vary depending on floor level locations.

# SUITE 1506



SUITE TYPE: 2B  
SUITE AREA: 769 SQFT  
BALCONY / TERRACE: 165 SQFT



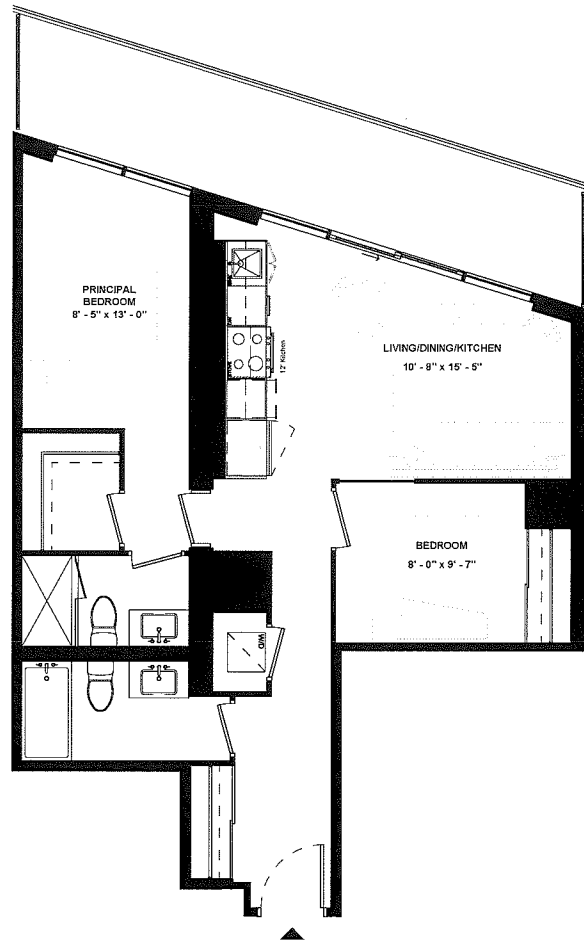
LEVEL 15



ISSUE DATE: 2023/06/02

Disclaimer: Drawings are not to scale. Materials, specifications, & floor plans are subject to change without notice. All renderings are artist's conceptions. All areas and stated room dimensions are approximate. Actual usable floor space may vary from the stated floor area. Floor area measured in accordance with Home Construction Regulatory Authority Directive. E.&O.E. Balcony sizes and configurations vary depending on floor level locations.

# SUITE 1308



SUITE TYPE: 2B  
SUITE AREA: 773 SQFT  
BALCONY / TERRACE: 166 SQFT



LEVEL 13

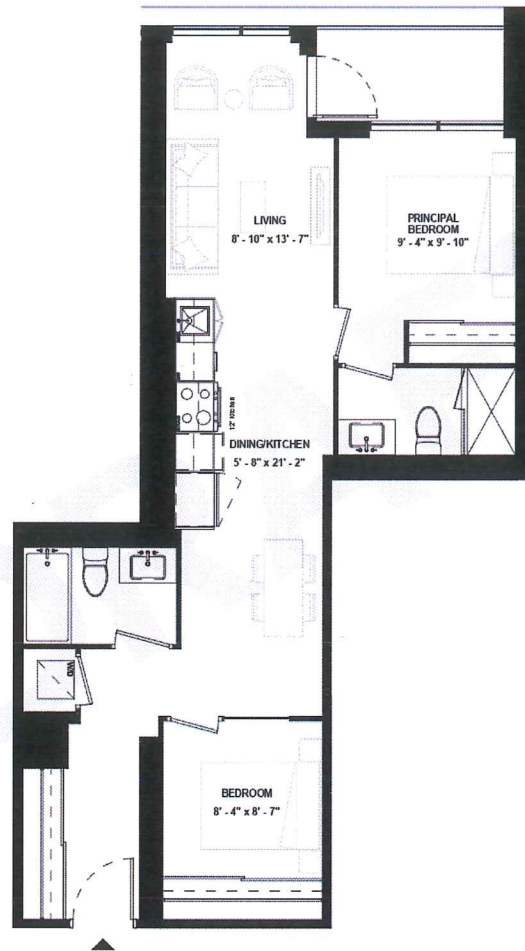


ISSUE DATE: 2023/06/02

Disclaimer: Drawings are not to scale. Materials, specifications, & floor plans are subject to change without notice. All renderings are artist's conceptions. All areas and stated room dimensions are approximate. Actual usable floor space may vary from the stated floor area. Floor area measured in accordance with Home Construction Regulatory Authority Directive, E.&O.E. Balcony sizes and configurations vary depending on floor level locations.

**SUITE 312 &  
SUITE 412 &  
SUITE 512**

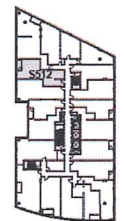
SUITE TYPE: 2B  
 SUITE AREA: 775 SQFT  
 BALCONY / TERRACE: 45 SQFT



LEVEL 03



LEVEL 04



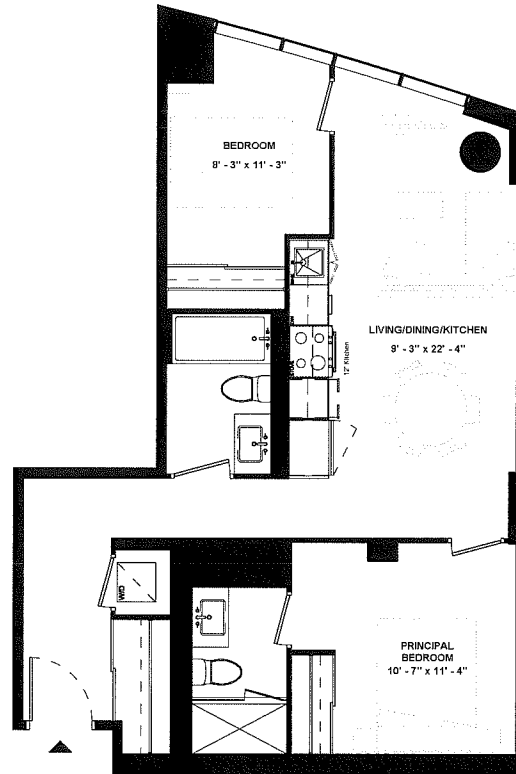
LEVEL 05

ISSUE DATE: 2023/06/02

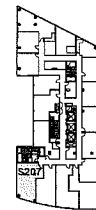


Disclaimer: Drawings are not to scale. Materials, specifications, & floor plans are subject to change without notice. All renderings are artist's conceptions. All areas and stated room dimensions are approximate. Actual usable floor space may vary from the stated floor area. Floor area measured in accordance with Home Construction Regulatory Authority Directive, E.&O.E. Balcony sizes and configurations vary depending on floor level locations.

# SUITE 207



SUITE TYPE: 2B  
SUITE AREA: 780 SQFT  
BALCONY / TERRACE: N/A SQFT



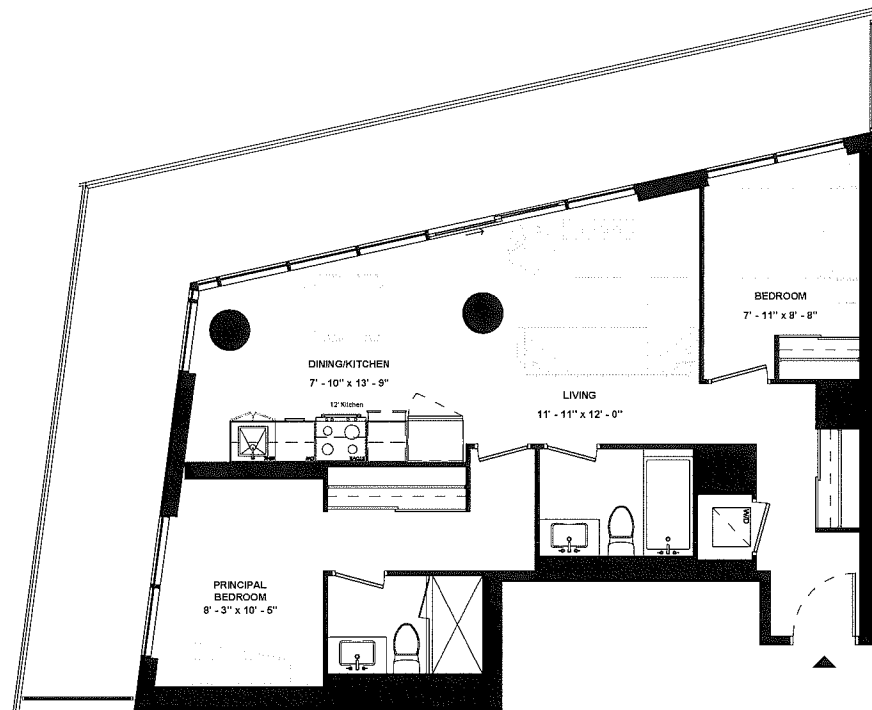
LEVEL 02



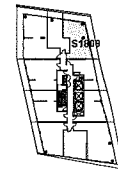
ISSUE DATE: 2023/06/02

Disclaimer: Drawings are not to scale. Materials, specifications, & floor plans are subject to change without notice. All renderings are artist's conceptions. All areas and stated room dimensions are approximate. Actual usable floor space may vary from the stated floor area. Floor area measured in accordance with Home Construction Regulatory Authority Directive, E.&O.E. Balcony sizes and configurations vary depending on floor level locations.

# SUITE 1809



SUITE TYPE: 2B  
SUITE AREA: 789 SQFT  
BALCONY / TERRACE: 339 SQFT



LEVEL 18

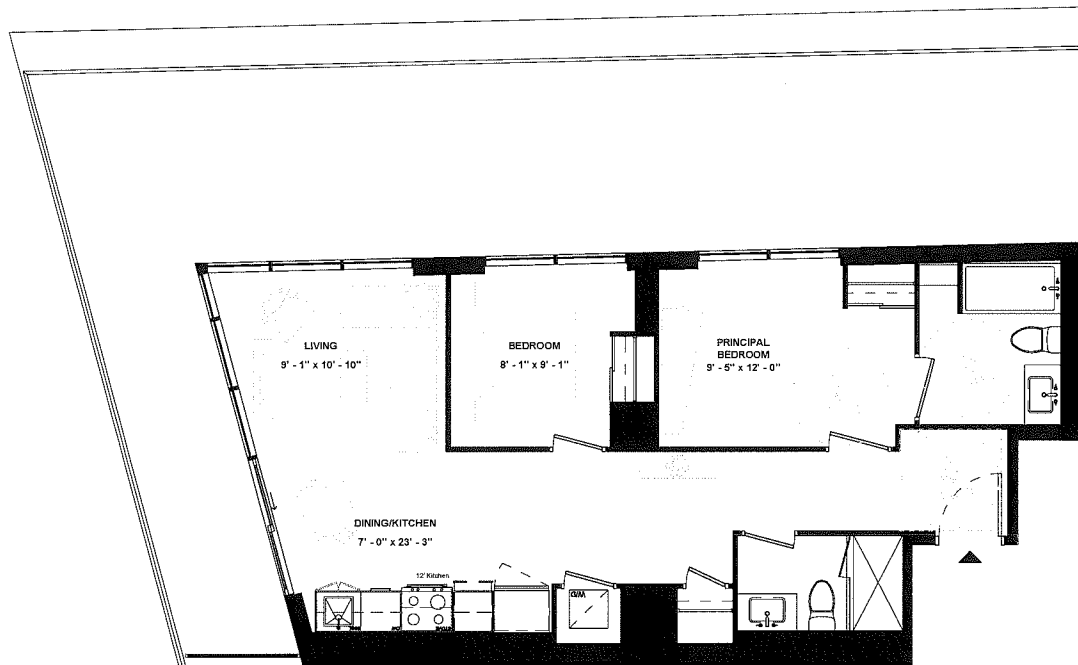


ISSUE DATE: 2023/06/02

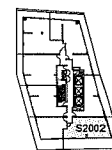
Disclaimer: Drawings are not to scale. Materials, specifications, & floor plans are subject to change without notice. All renderings are artist's conceptions. All areas and stated room dimensions are approximate. Actual usable floor space may vary from the stated floor area. Floor area measured in accordance with Home Construction Regulatory Authority Directive, E.&O.E. Balcony sizes and configurations vary depending on floor level locations.



# SUITE 2002



SUITE TYPE: 2B (BF)  
SUITE AREA: 797 SQFT  
BALCONY / TERRACE: 603 SQFT

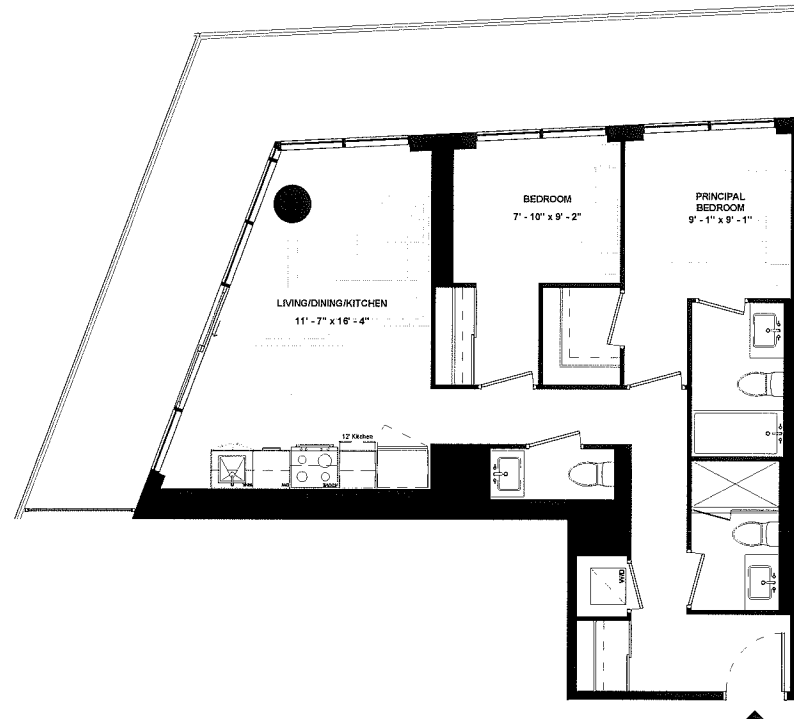


ISSUE DATE: 2023/06/02

LEVEL 20

Disclaimer: Drawings are not to scale. Materials, specifications, & floor plans are subject to change without notice. All tenderings are artist's conceptions. All areas and stated room dimensions are approximate. Actual usable floor space may vary from the stated floor area. Floor area measured in accordance with Home Construction Regulatory Authority Directive, E.&O.E. Balcony sizes and configurations vary depending on floor level locations.

# SUITE 1109



SUITE TYPE: 2B  
SUITE AREA: 807 SQFT  
BALCONY / TERRACE: 304 SQFT

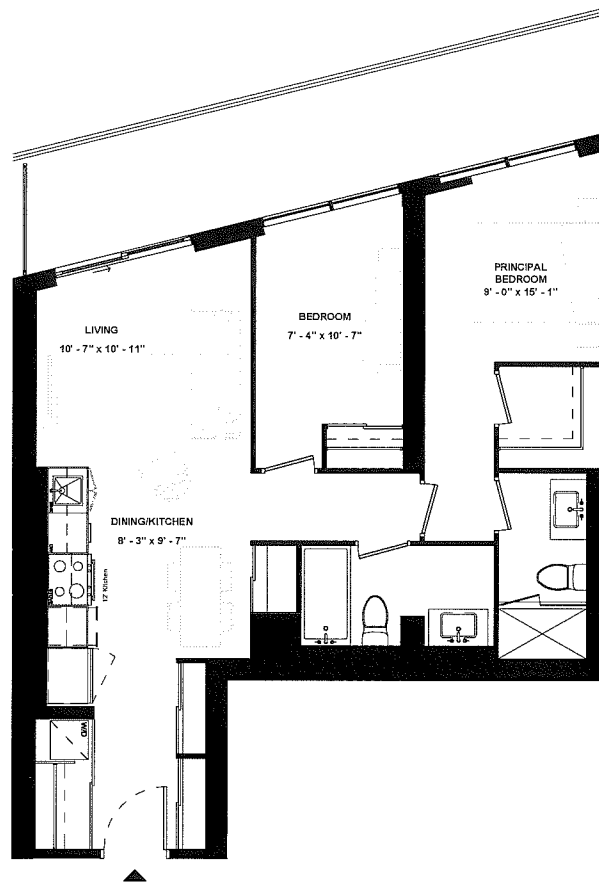


ISSUE DATE: 2023/06/02

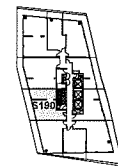
LEVEL 11

Disclaimer: Drawings are not to scale. Materials, specifications, & floor plans are subject to change without notice. All renderings are artist's conceptions. All areas and stated room dimensions are approximate. Actual usable floor space may vary from the slated floor area. Floor area measured in accordance with Home Construction Regulatory Authority Directive. E.&O.E. Balcony sizes and configurations vary depending on floor level locations.

# SUITE 1905



SUITE TYPE: 2B  
SUITE AREA: 809 SQFT  
BALCONY / TERRACE: 168 SQFT



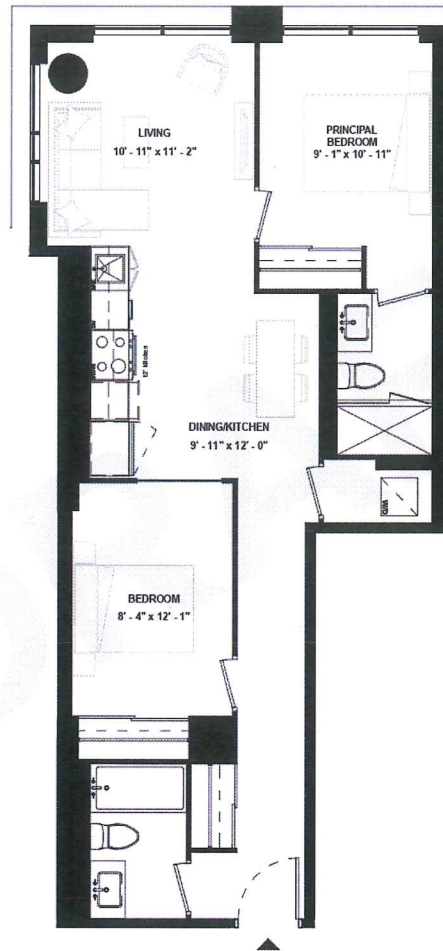
LEVEL 19



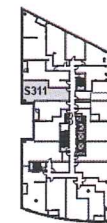
ISSUE DATE: 2023/06/02

Disclaimer: Drawings are not to scale. Materials, specifications, & floor plans are subject to change without notice. All renderings are artist's conceptions. All areas and stated room dimensions are approximate. Actual usable floor space may vary from the stated floor area. Floor area measured in accordance with Home Construction Regulatory Authority Directive, E.&O.E. Balcony sizes and configurations vary depending on floor level locations.

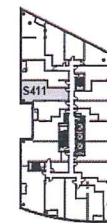
**SUITE 311 &  
SUITE 411 &  
SUITE 511**



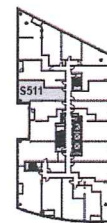
SUITE TYPE: 2B  
 SUITE AREA: 811 SQFT  
 BALCONY / TERRACE: N/A SQFT



LEVEL 03



LEVEL 04



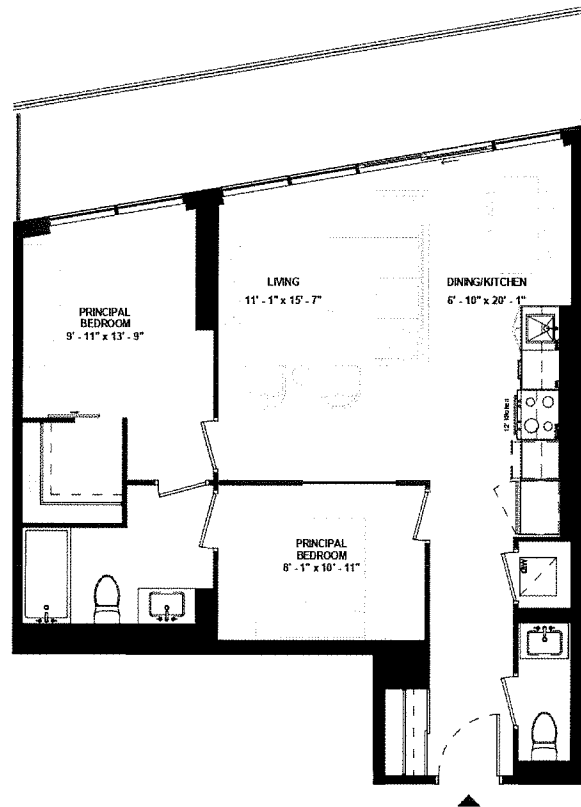
LEVEL 05

ISSUE DATE: 2023/06/02

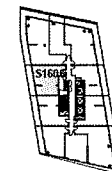


Disclaimer: Drawings are not to scale. Materials, specifications, & floor plans are subject to change without notice. All renderings are artist's conceptions. All areas and stated room dimensions are approximate. Actual usable floor space may vary from the stated floor area. Floor area measured in accordance with Home Construction Regulatory Authority Directive, E.&O.E. Balcony sizes and configurations vary depending on floor level locations.

# SUITE 1606



SUITE TYPE: 2B  
SUITE AREA: 820 SQFT  
BALCONY / TERRACE: 166 SQFT



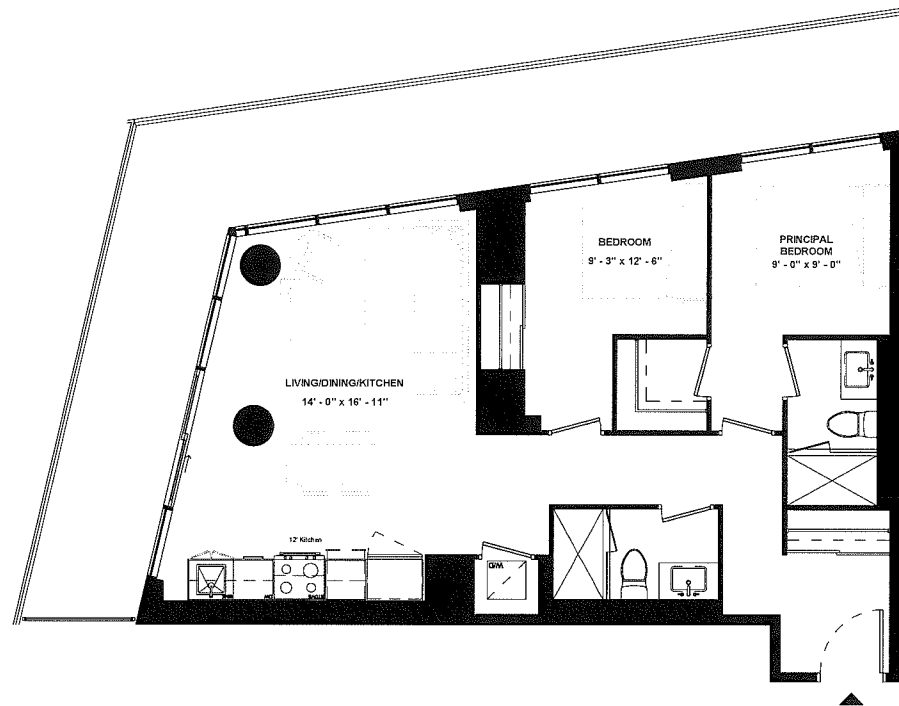
LEVEL 16



ISSUE DATE: 2023/06/02

Disclaimer: Drawings are not to scale. Materials, specifications, & floor plans are subject to change without notice. All renderings are artist's conceptions. All areas and stated room dimensions are approximate. Actual usable floor space may vary from the stated floor area. Floor area measured in accordance with Home Construction Regulatory Authority Directive, E.&O.E. Balcony sizes and configurations vary depending on floor level locations.

# SUITE 1509



SUITE TYPE: 2B  
SUITE AREA: 829 SQFT  
BALCONY / TERRACE: 329 SQFT



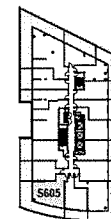
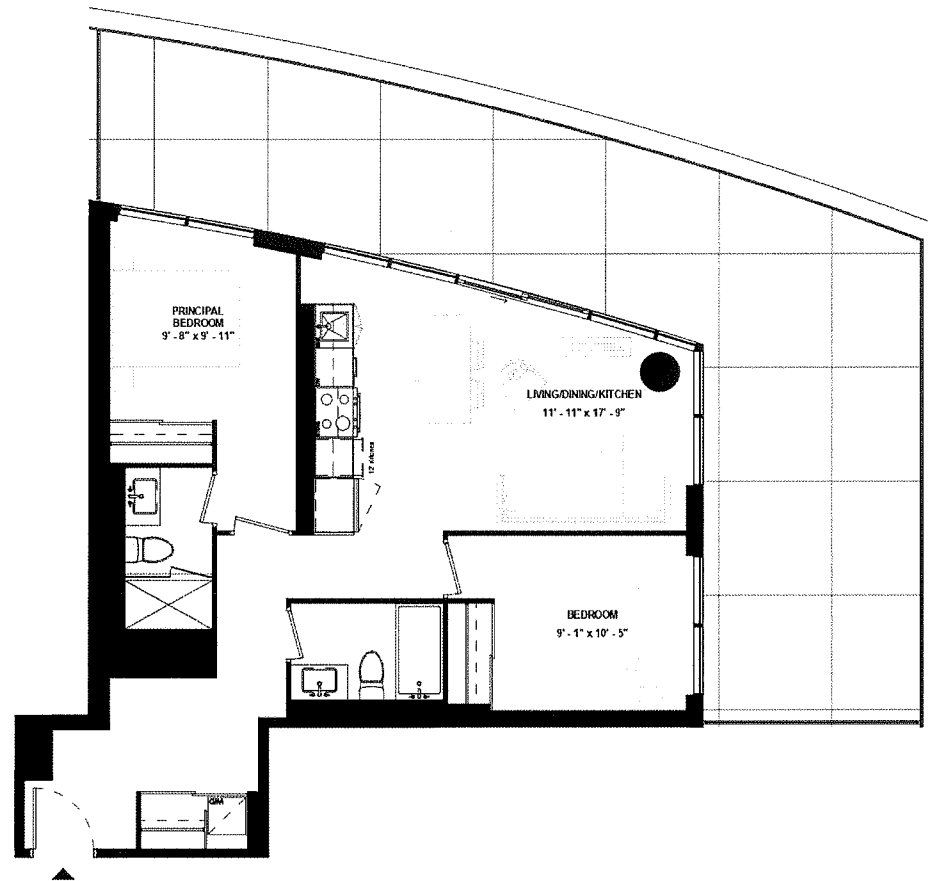
ISSUE DATE: 2023/06/02

LEVEL 15

Disclaimer: Drawings are not to scale. Materials, specifications, & floor plans are subject to change without notice. All renderings are artist's conceptions. All areas and stated room dimensions are approximate. Actual usable floor space may vary from the stated floor area. Floor area measured in accordance with Home Construction Regulatory Authority Directive, E.&O.E. Balcony sizes and configurations vary depending on floor level locations.

# SUITE 605

SUITE TYPE: 2B  
SUITE AREA: 845 SQFT  
BALCONY / TERRACE: 571 SQFT



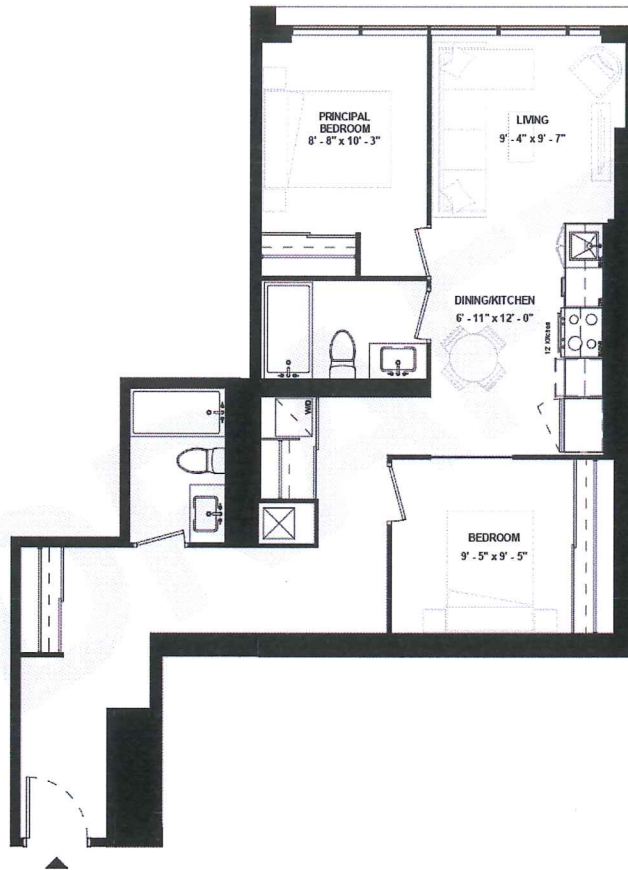
LEVEL 06



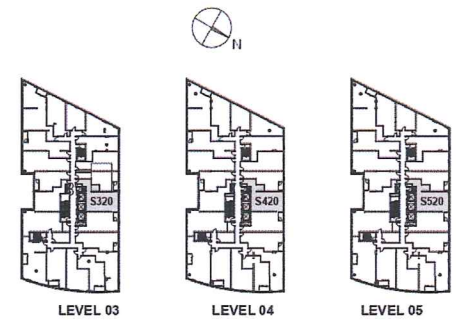
ISSUE DATE: 2023/06/02

Disclaimer: Drawings are not to scale. Materials, specifications, & floor plans are subject to change without notice. All renderings are artist's conceptions. All areas and stated room dimensions are approximate. Actual usable floor space may vary from the stated floor area. Floor area measured in accordance with Home Construction Regulatory Authority Directive, E.80 E. Balcony sizes and configurations vary depending on floor level locations.

**SUITE 320 &  
SUITE 420 &  
SUITE 520**



SUITE TYPE: 2B  
 SUITE AREA: 851 SQFT  
 BALCONY / TERRACE: N/A SQFT

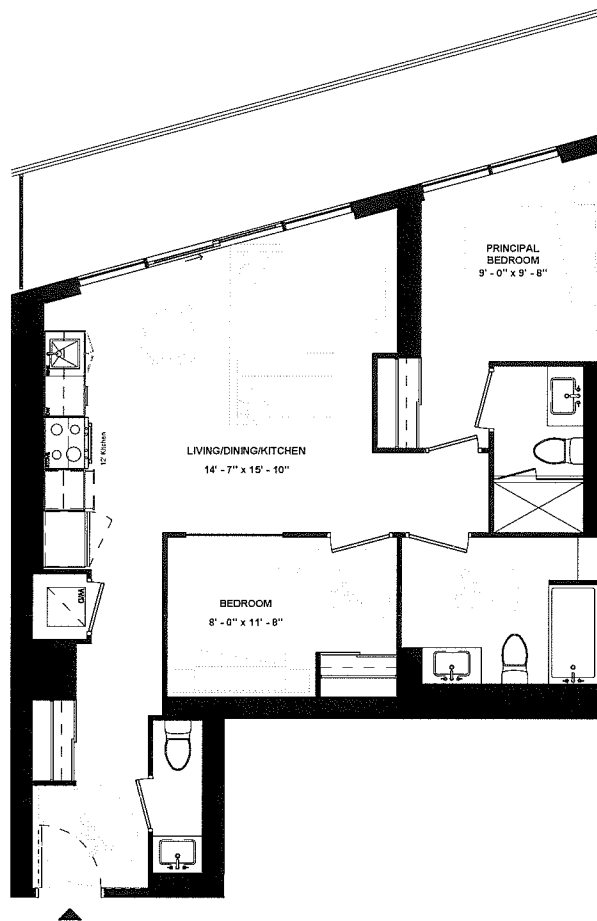


ISSUE DATE: 2023/06/02

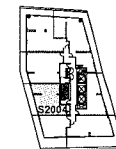
Disclaimer: Drawings are not to scale. Materials, specifications, & floor plans are subject to change without notice. All renderings are artist's conceptions. All areas and stated room dimensions are approximate. Actual usable floor space may vary from the stated floor area. Floor area measured in accordance with Home Construction Regulatory Authority Directive, E.&O.E. Balcony sizes and configurations vary depending on floor level locations.



# SUITE 2004



SUITE TYPE: 2B (BF)  
SUITE AREA: 853 SQFT  
BALCONY / TERRACE: 169 SQFT



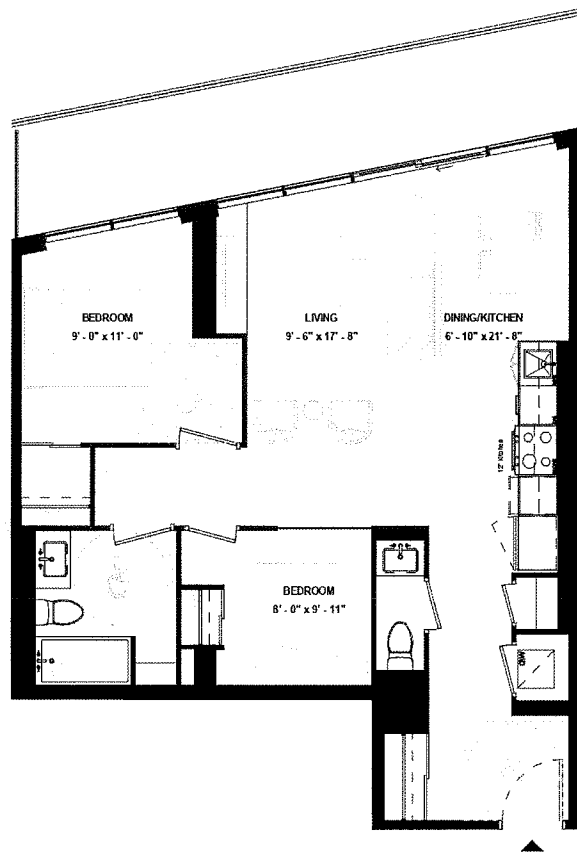
LEVEL 20



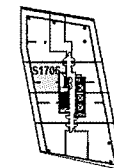
ISSUE DATE: 2023/06/02

Disclaimer: Drawings are not to scale. Materials, specifications, & floor plans are subject to change without notice. All renderings are artist's conceptions. All areas and stated room dimensions are approximates. Actual usable floor space may vary from the stated floor area. Floor area measured in accordance with Home Construction Regulatory Authority Directive, E.&O.E. Balcony sizes and configurations vary depending on floor level locations.

# SUITE 1706



SUITE TYPE: 2B (BF)  
SUITE AREA: 874 SQFT  
BALCONY / TERRACE: 166 SQFT



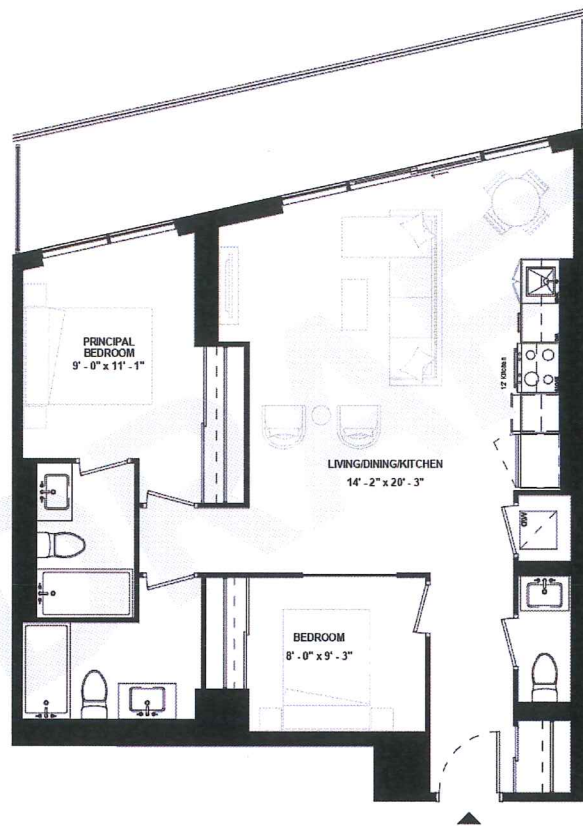
LEVEL 17



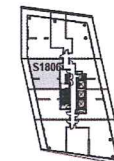
ISSUE DATE: 2023/06/02

Disclaimer: Drawings are not to scale. Materials, specifications, & floor plans are subject to change without notice. All renderings are artist's conceptions. All areas and stated room dimensions are approximate. Actual usable floor space may vary from the stated floor area. Floor area measured in accordance with Home Construction Regulatory Authority Directive. E.&O.E. Balcony sizes and configurations vary depending on floor level locations.

# SUITE 1806



SUITE TYPE: 2B  
SUITE AREA: 891 SQFT  
BALCONY / TERRACE: 167 SQFT



LEVEL 18

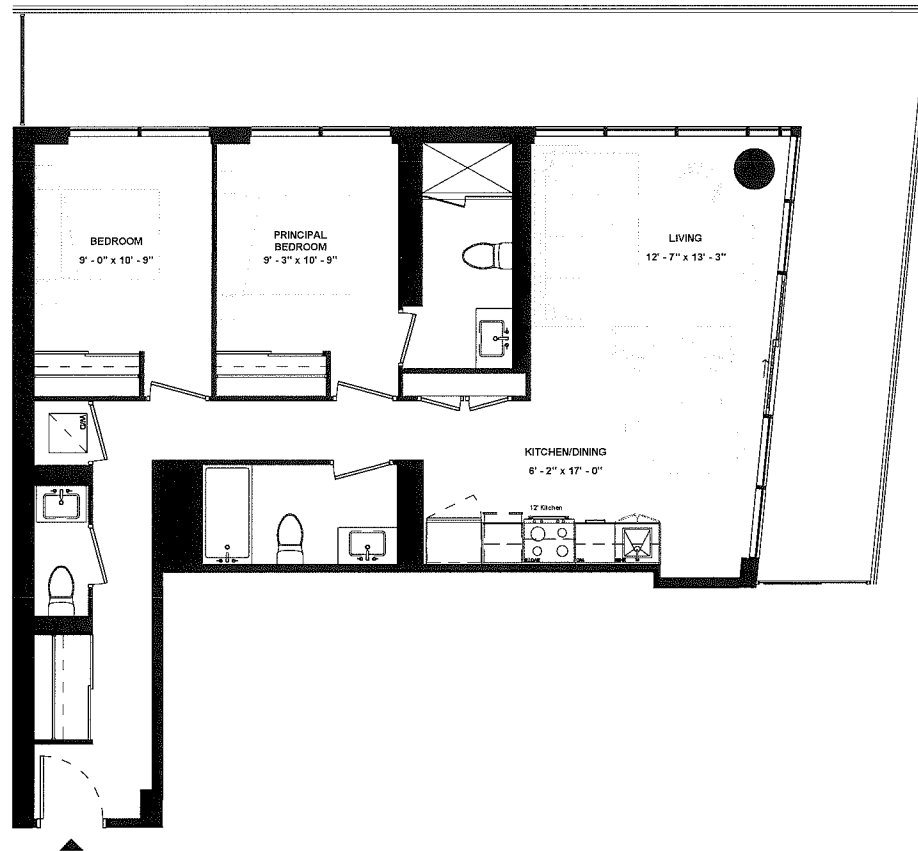


**HARHAY**  
DEVELOPMENTS

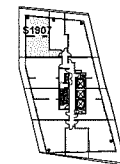
ISSUE DATE: 2023/06/02

Disclaimer: Drawings are not to scale. Materials, specifications, & floor plans are subject to change without notice. All renderings are artist's conceptions. All areas and stated room dimensions are approximate. Actual usable floor space may vary from the stated floor area. Floor area measured in accordance with Home Construction Regulatory Authority Directive, E.&O.E. Balcony sizes and configurations vary depending on floor level locations.

# SUITE 1907



SUITE TYPE: 2B  
SUITE AREA: 974 SQFT  
BALCONY / TERRACE: 378 SQFT



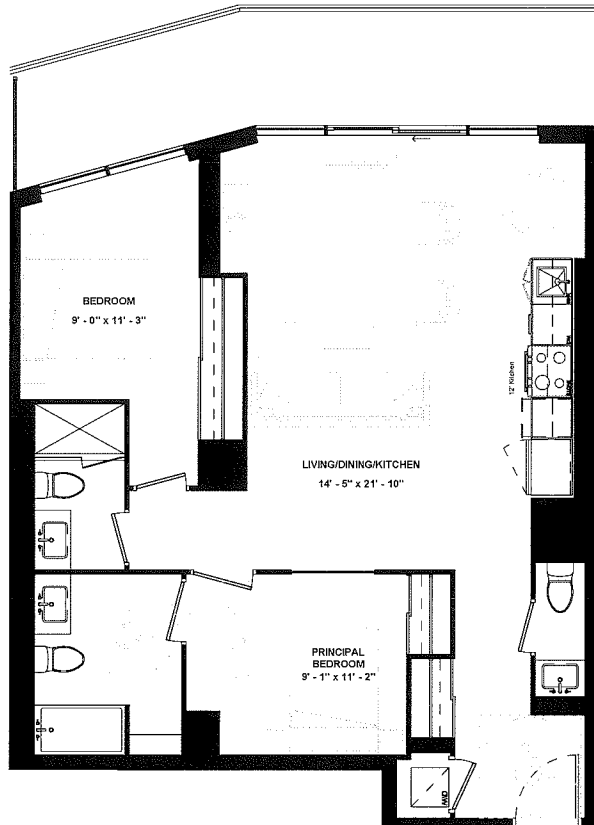
LEVEL 19



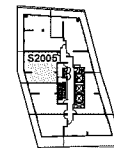
ISSUE DATE: 2023/06/02

Disclaimer: Drawings are not to scale. Materials, specifications, & floor plans are subject to change without notice. All renderings are artist's conceptions. All areas and stated room dimensions are approximate. Actual usable floor space may vary from the stated floor area. Floor area measured in accordance with Home Construction Regulatory Authority Directive, E.&O.E. Balcony sizes and configurations vary depending on floor level locations.

# SUITE 2005



SUITE TYPE: 2B (BF)  
SUITE AREA: 980 SQFT  
BALCONY / TERRACE: 166 SQFT



LEVEL 20



ISSUE DATE: 2023/06/02

Disclaimer: Drawings are not to scale. Materials, specifications, & floor plans are subject to change without notice. All renderings are artist's conceptions. All areas and stated room dimensions are approximate. Actual usable floor space may vary from the stated floor area. Floor area measured in accordance with Home Construction Regulatory Authority Directive, E.4.0.E. Balcony sizes and configurations vary depending on floor level locations.