



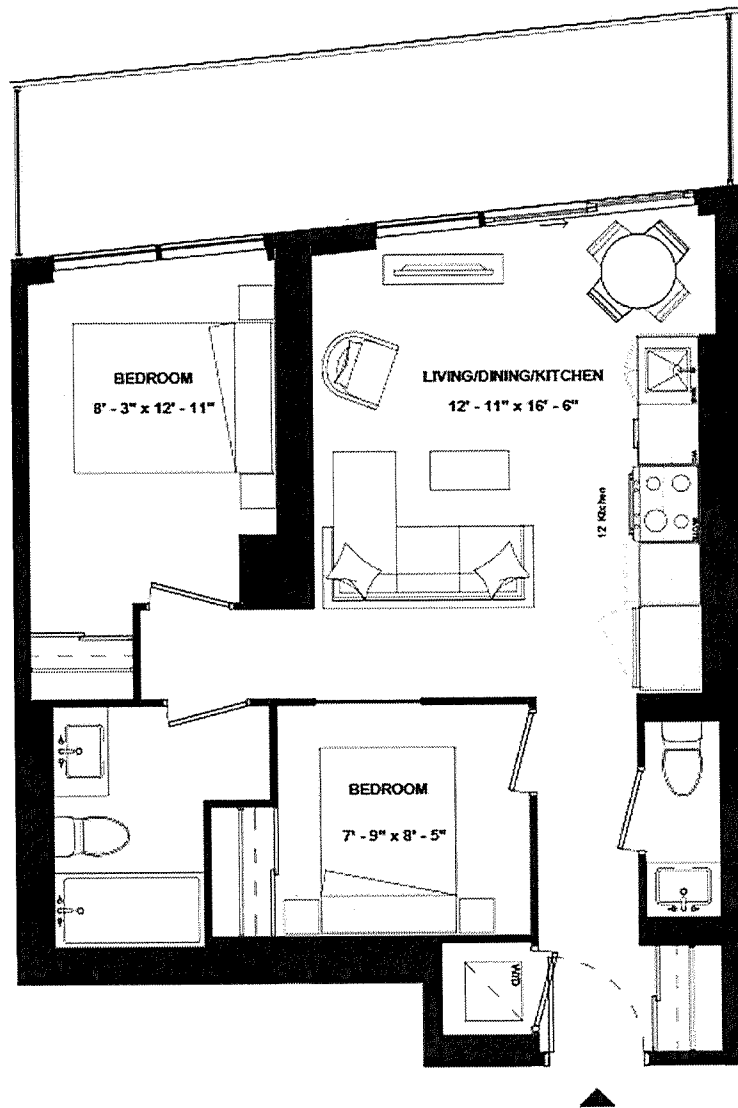
THE
9HUNDRED
SIGNATURE RESIDENCES

A2B-640

SUITE TYPE: 2B
SUITE AREA: 640 SQFT
BALCONY/TERRACE: 137 SQFT



HARHAY
DEVELOPMENTS



SUITE 1301



ISSUE DATE: 2023/05/05



THE
9HUNDRED
SIGNATURE RESIDENCES

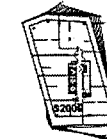
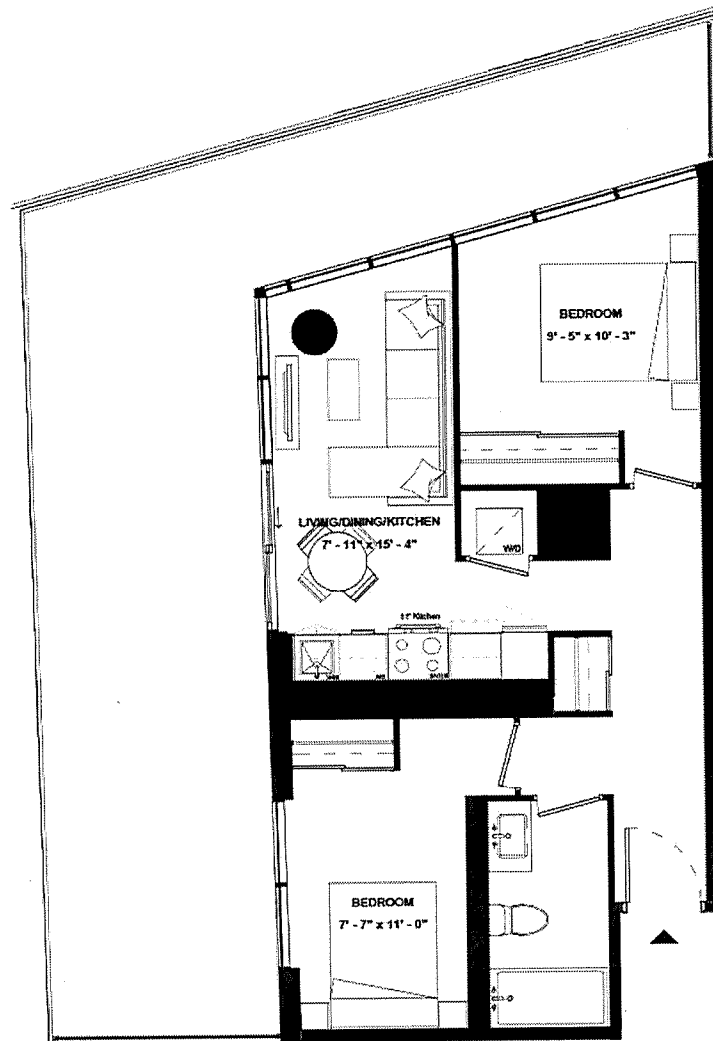
A2B-644

SUITE TYPE: 2B
SUITE AREA: 644 SQFT
BALCONY/TERRACE: 455 SQFT



HARHAY
DEVELOPMENTS

SUITE 2006



ISSUE DATE: 2023/05/05



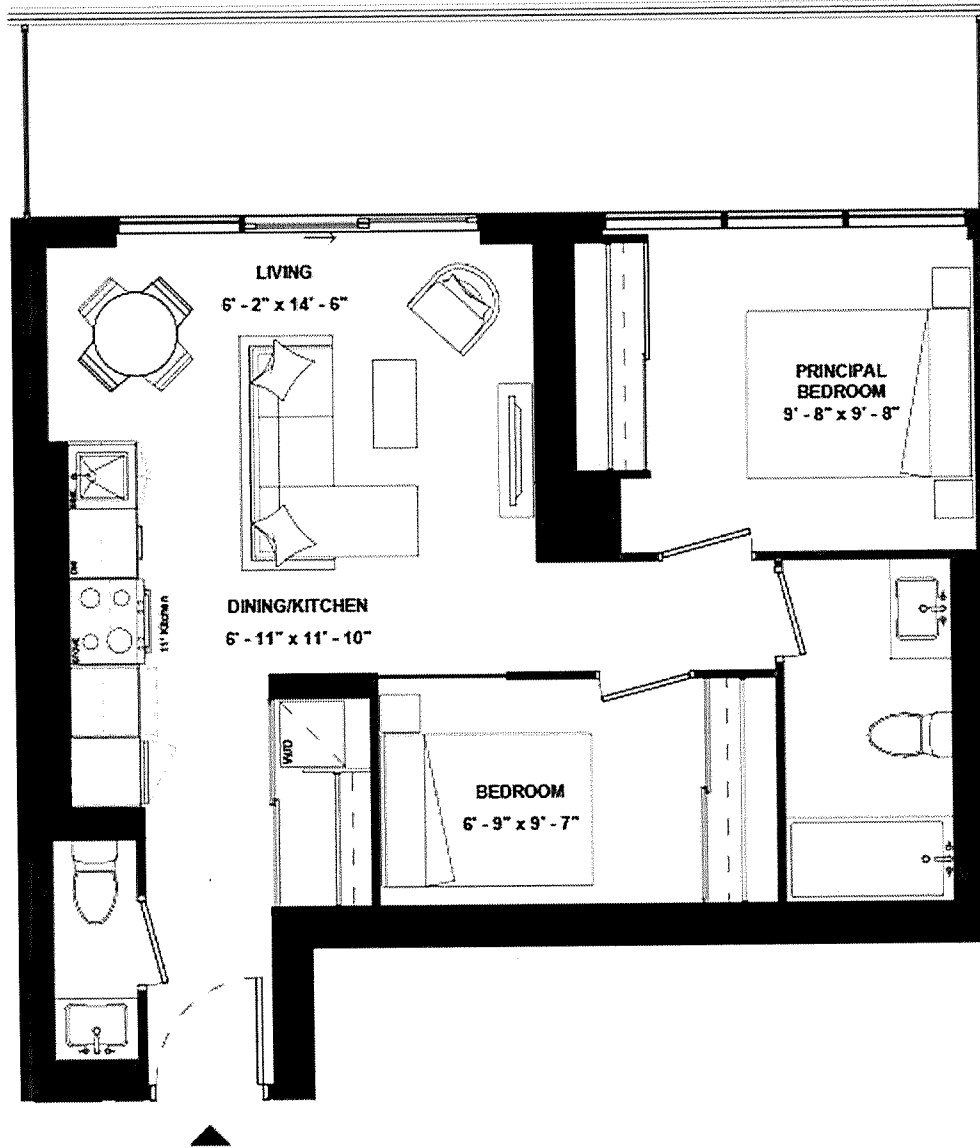
THE
9HUNDRED
SIGNATURE RESIDENCES

A2B-663

SUITE TYPE: 2B
SUITE AREA: 663 SQFT
BALCONY/TERRACE: 157 SQFT



HARHAY
DEVELOPMENTS



SUITE 912

ISSUE DATE: 2023/05/05



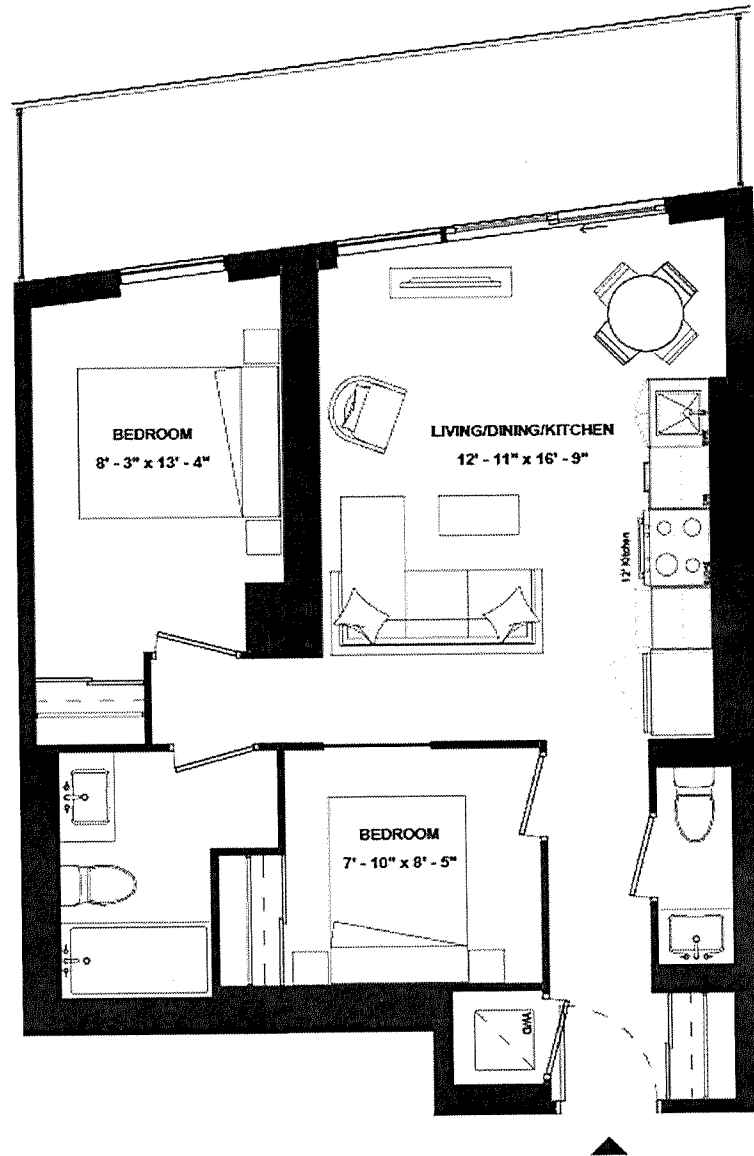
THE
9HUNDRED
SIGNATURE RESIDENCES

A2B-664A

SUITE TYPE: 2B
SUITE AREA: 664 SQFT
BALCONY/TERRACE: 132 SQFT



HARHAY
DEVELOPMENTS



SUITE 1401



ISSUE DATE: 2023/05/05



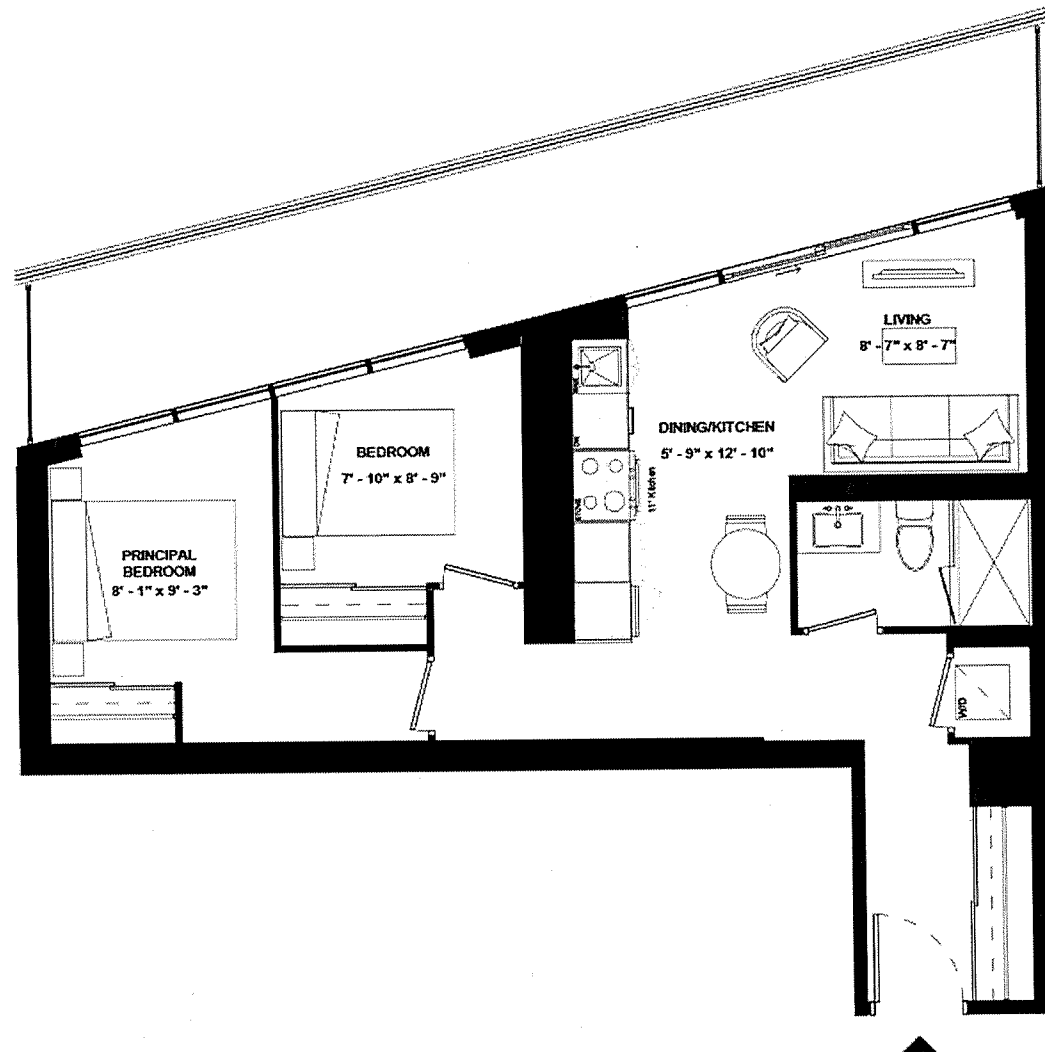
THE
9HUNDRED
SIGNATURE RESIDENCES

A2B-664B

SUITE TYPE: 2B
SUITE AREA: 664 SQFT
BALCONY/TERRACE: 207 SQFT



HARHAY
DEVELOPMENTS



SUITE 1906

ISSUE DATE: 2023/05/05



THE
9HUNDRED
SIGNATURE RESIDENCES

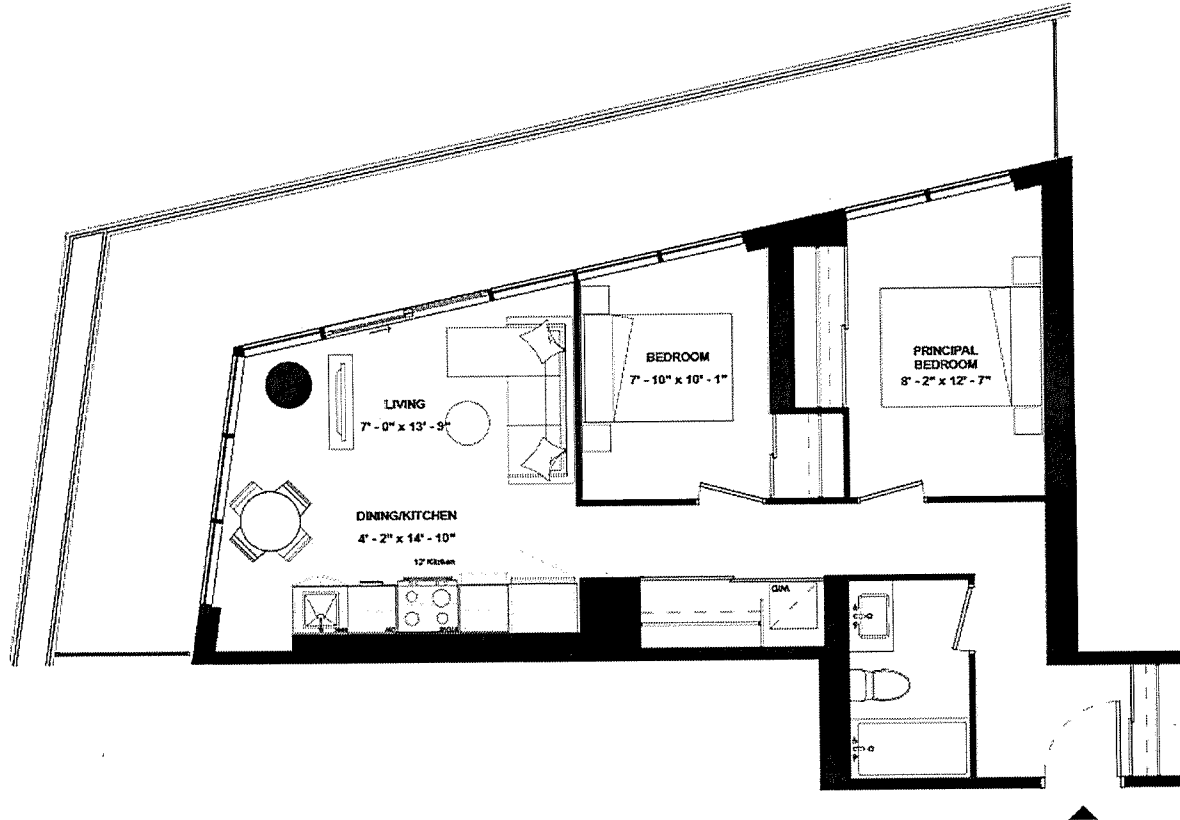
A2B-679

SUITE TYPE: 2B
SUITE AREA: 679 SQFT
BALCONY/TERRACE: 294 SQFT



HARHAY
DEVELOPMENTS

SUITE 1804



ISSUE DATE: 2023/05/05



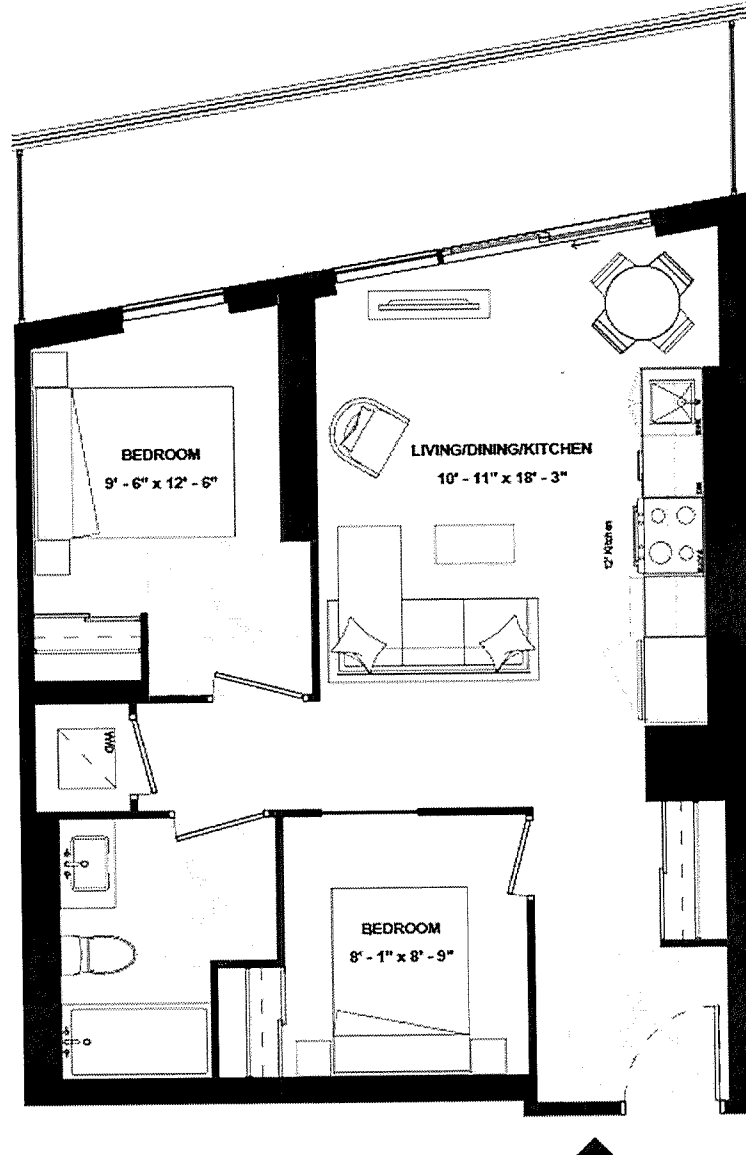
THE
9HUNDRED
SIGNATURE RESIDENCES

A2B(BF)-683

SUITE TYPE: 2B (BF)
SUITE AREA: 683 SQFT
BALCONY/TERRACE: 133 SQFT



HARHAY
DEVELOPMENTS



SUITE 1601



ISSUE DATE: 2023/05/05

SUITE 1501



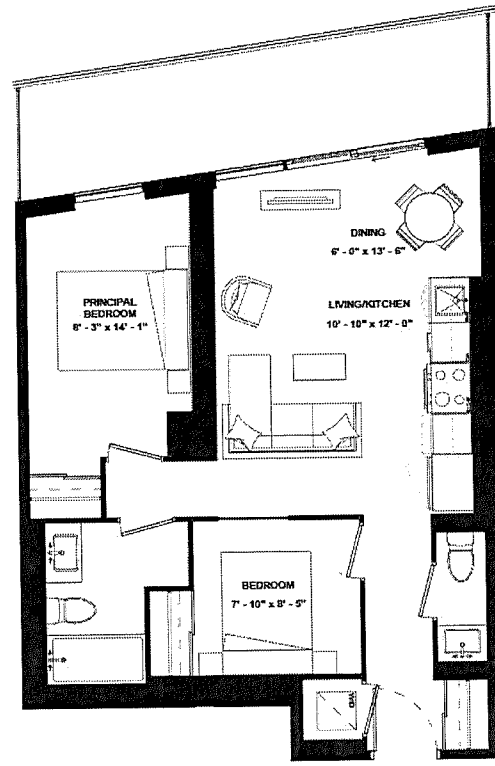
THE
9HUNDRED
SIGNATURE RESIDENCES

A2B-688A

SUITE TYPE: 2B
SUITE AREA: 688 SQFT
BALCONY/TERRACE: 133 SQFT



HARHAY
DEVELOPMENTS



ISSUE DATE: 2023/05/05



THE
9HUNDRED
SIGNATURE RESIDENCES

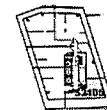
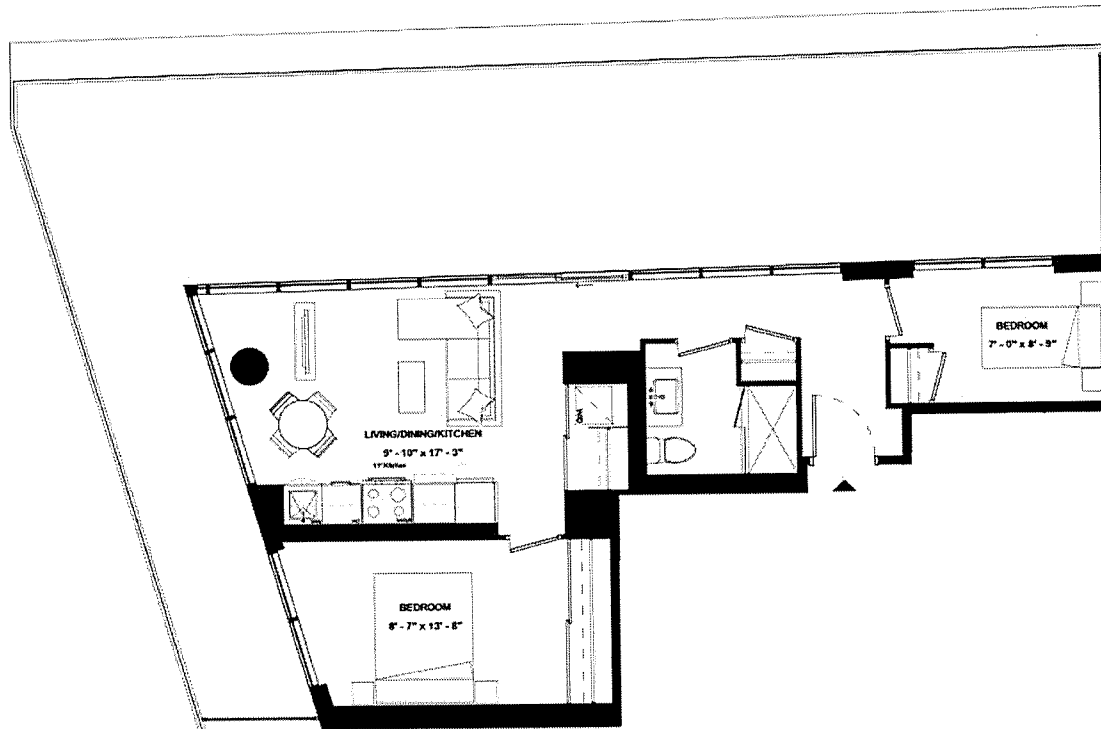
A2B-688B

SUITE TYPE: 2B
SUITE AREA: 688 SQFT
BALCONY/TERRACE: 695 SQFT



HARHAY
DEVELOPMENTS

SUITE 2105



ISSUE DATE: 2023/05/05



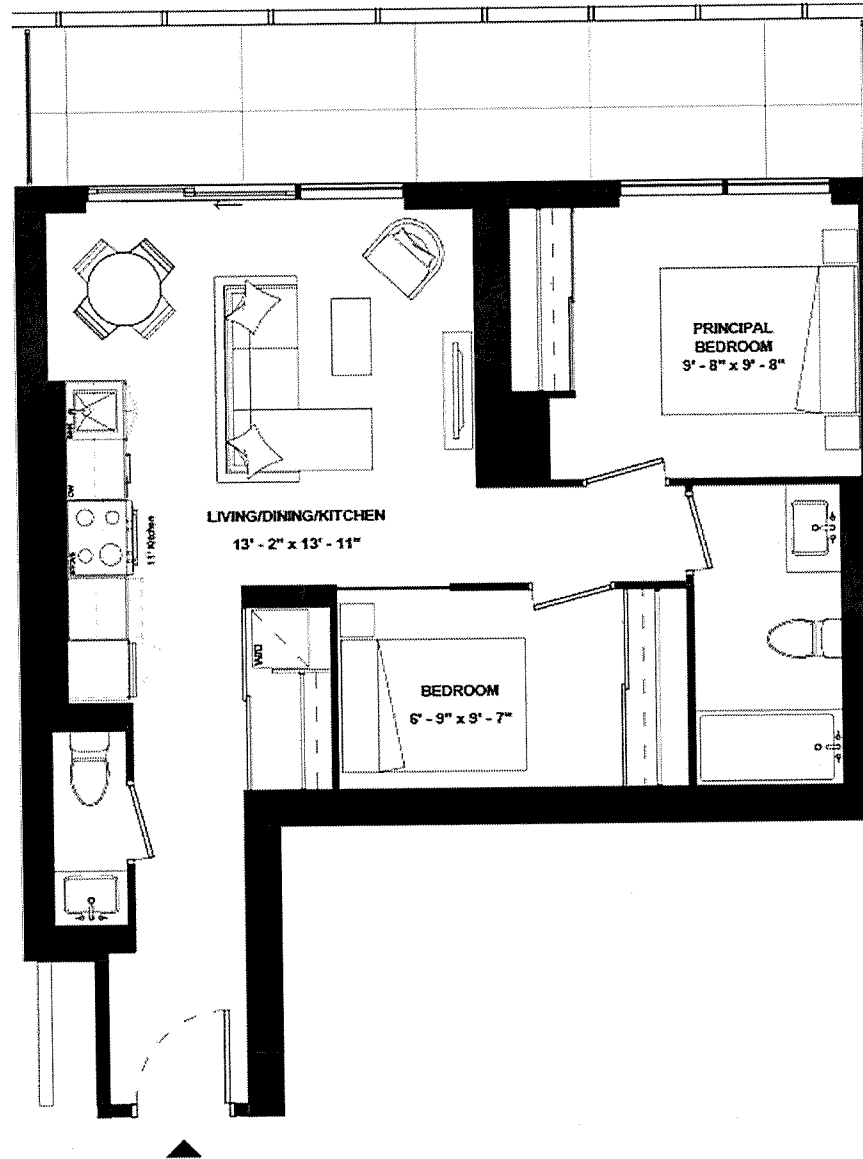
THE
9HUNDRED
SIGNATURE RESIDENCES

A2B-696

SUITE TYPE: 2B
SUITE AREA: 696 SQFT
BALCONY/TERRACE: 147 SQFT



HARHAY
DEVELOPMENTS



SUITE 812

ISSUE DATE: 2023/05/05



THE
9HUNDRED
SIGNATURE RESIDENCES

A2B-709

SUITE TYPE: 2B
SUITE AREA: 709 SQFT
BALCONY/TERRACE: 163 SQFT



HARHAY
DEVELOPMENTS



SUITE 1111



ISSUE DATE: 2023/05/05

SUITE 1701



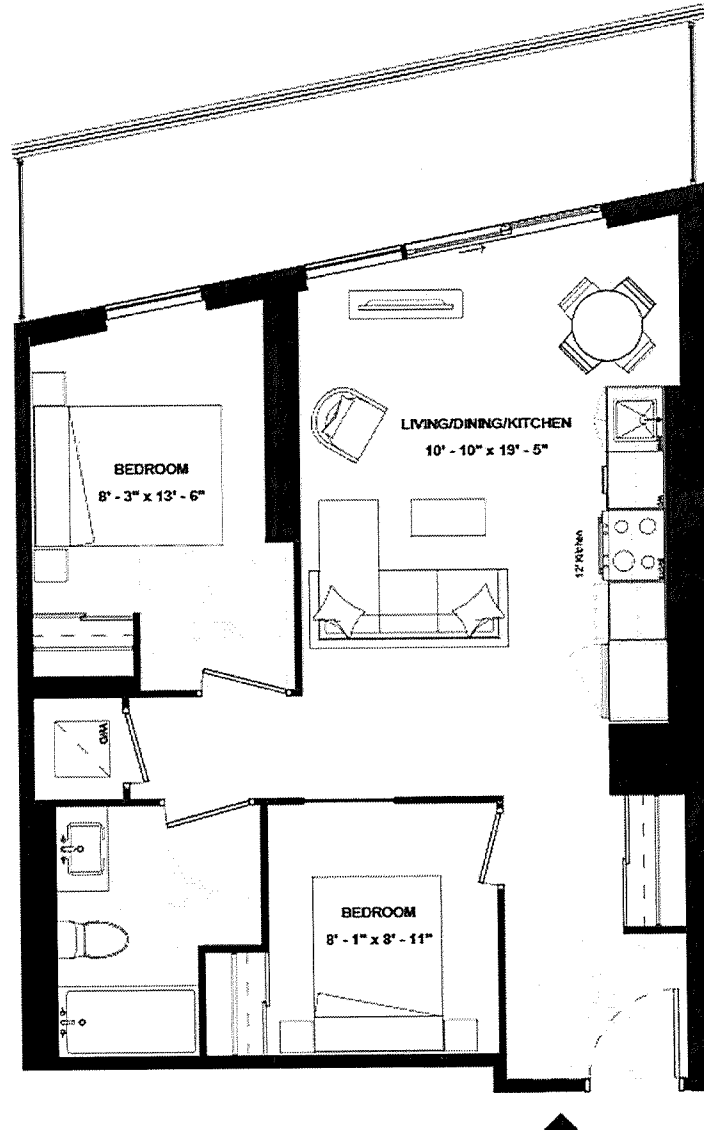
THE
9HUNDRED
SIGNATURE RESIDENCES

A2B(BF)-709

SUITE TYPE: 2B (BF)
SUITE AREA: 709 SQFT
BALCONY/TERRACE: 134 SQFT



HARHAY
DEVELOPMENTS



ISSUE DATE: 2023/05/05



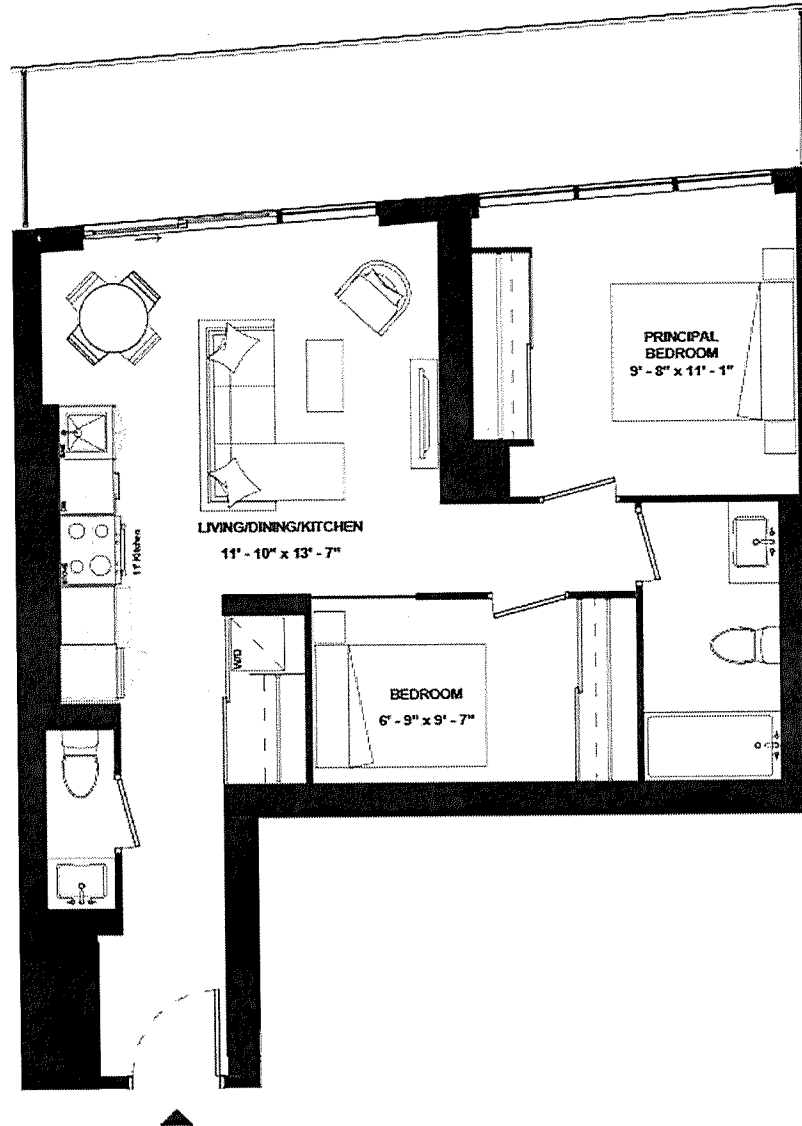
THE
9HUNDRED
SIGNATURE RESIDENCES

A2B-719A

SUITE TYPE: 2B
SUITE AREA: 719 SQFT
BALCONY/TERRACE: 163 SQFT



HARHAY
DEVELOPMENTS



SUITE 1211

ISSUE DATE: 2023/05/05



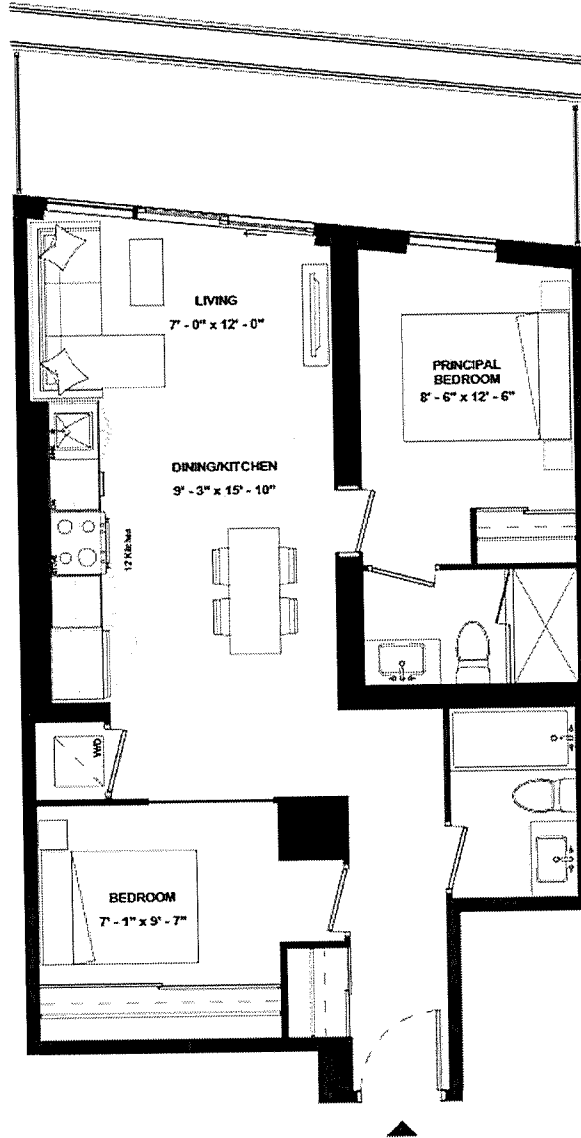
THE
9HUNDRED
SIGNATURE RESIDENCES

A2B-719B

SUITE TYPE: 2B
SUITE AREA: 719 SQFT
BALCONY/TERRACE: 123 SQFT



HARHAY
DEVELOPMENTS



SUITE 1903

ISSUE DATE: 2023/05/05



THE
9HUNDRED
SIGNATURE RESIDENCES

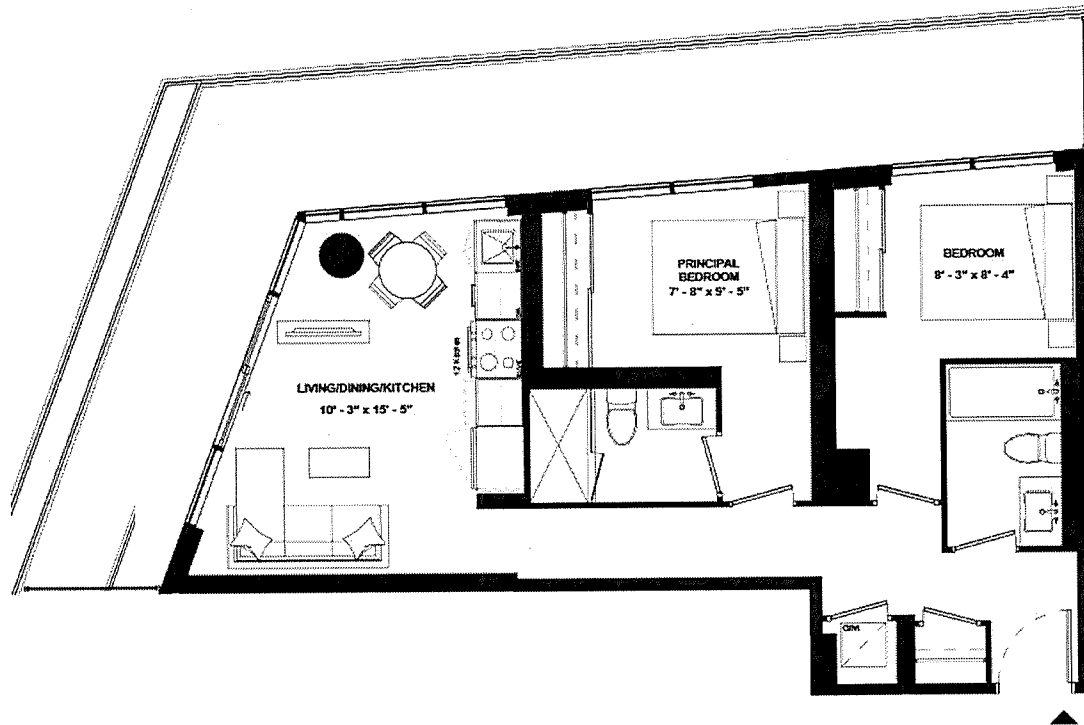
A2B-722

SUITE TYPE: 2B
SUITE AREA: 722 SQFT
BALCONY/TERRACE: 326 SQFT



HARHAY
DEVELOPMENTS

SUITE 1205



ISSUE DATE: 2023/05/05



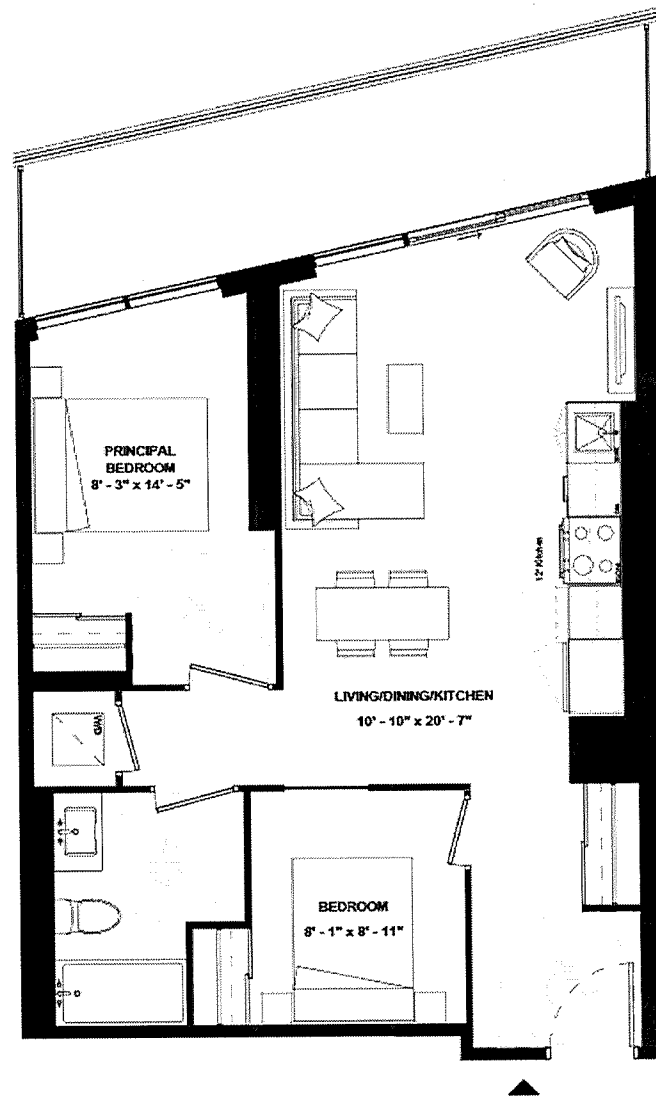
THE
9HUNDRED
SIGNATURE RESIDENCES

A2B(BF)-736

SUITE TYPE: 2B (BF)
SUITE AREA: 736 SQFT
BALCONY/TERRACE: 134 SQFT



HARHAY
DEVELOPMENTS



SUITE 1801

ISSUE DATE: 2023/05/05



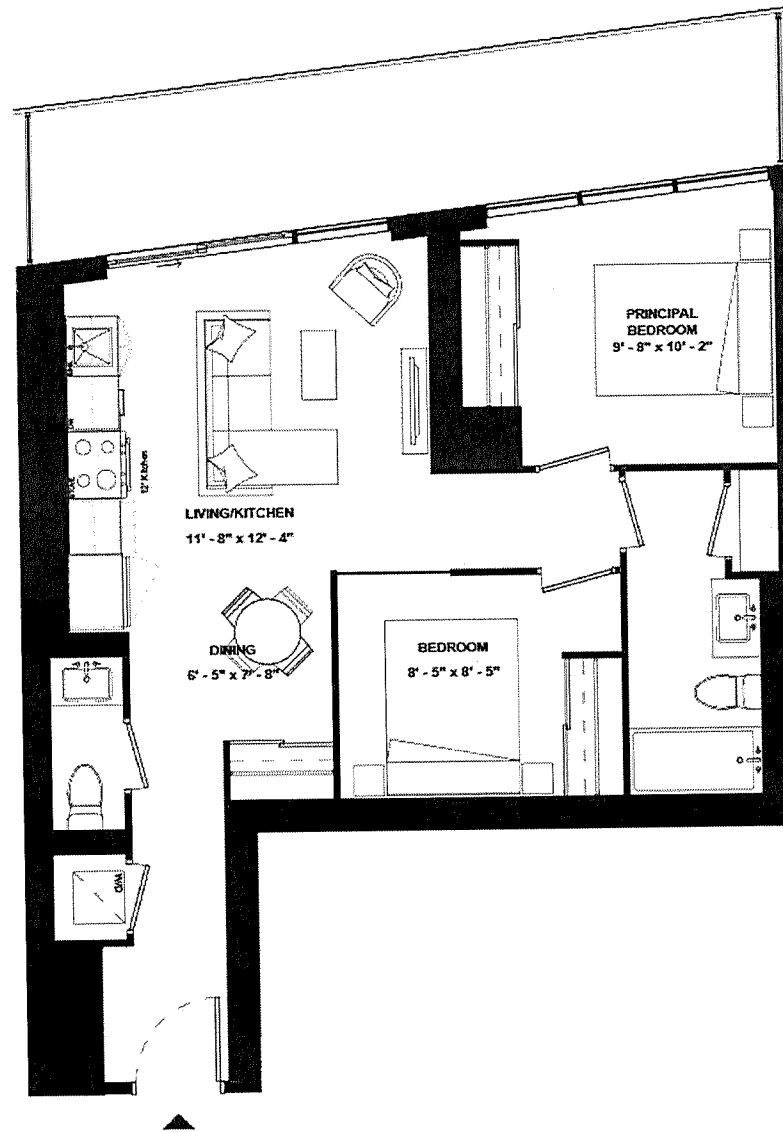
THE
9HUNDRED
SIGNATURE RESIDENCES

A2B-739

SUITE TYPE: 2B
SUITE AREA: 739 SQFT
BALCONY/TERRACE: 158 SQFT



HARHAY
DEVELOPMENTS



SUITE 1410



ISSUE DATE: 2023/05/05



THE
9HUNDRED
SIGNATURE RESIDENCES

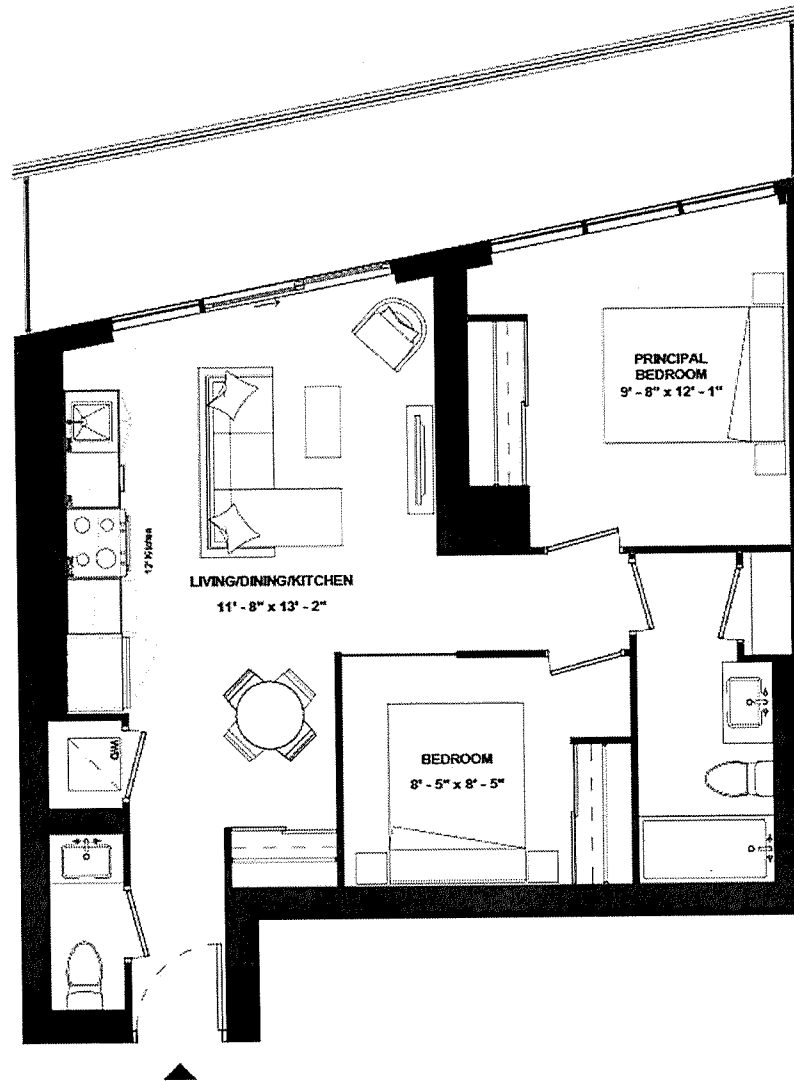
A2B-741

SUITE TYPE: 2B
SUITE AREA: 741 SQFT
BALCONY/TERRACE: 159 SQFT



HARHAY
DEVELOPMENTS

SUITE 1710



ISSUE DATE: 2023/05/05



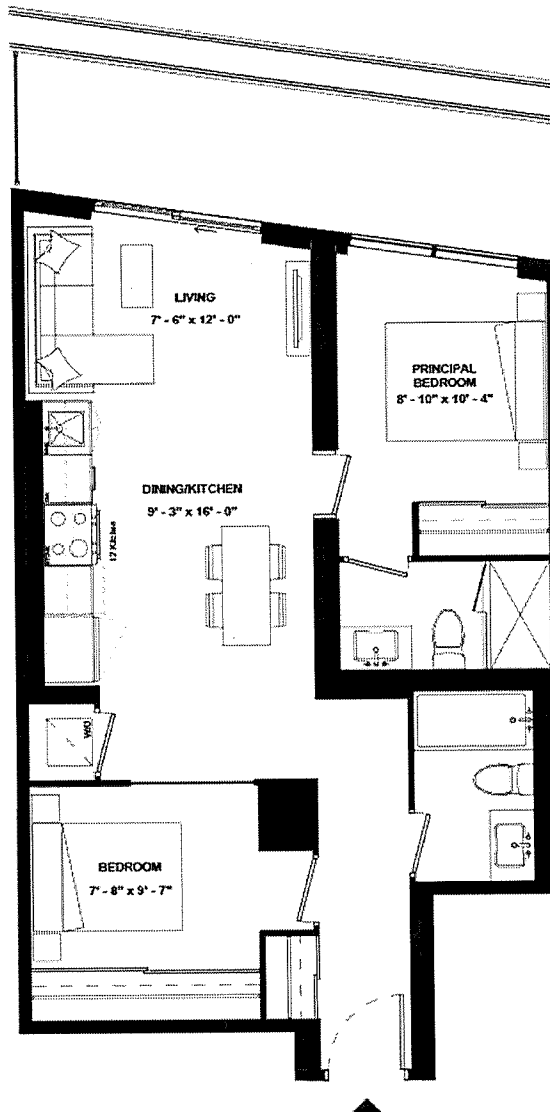
THE
9HUNDRED
SIGNATURE RESIDENCES

A2B-746

SUITE TYPE: 2B
SUITE AREA: 746 SQFT
BALCONY/TERRACE: 125 SQFT



HARHAY
DEVELOPMENTS



SUITE 1803

ISSUE DATE: 2023/05/05



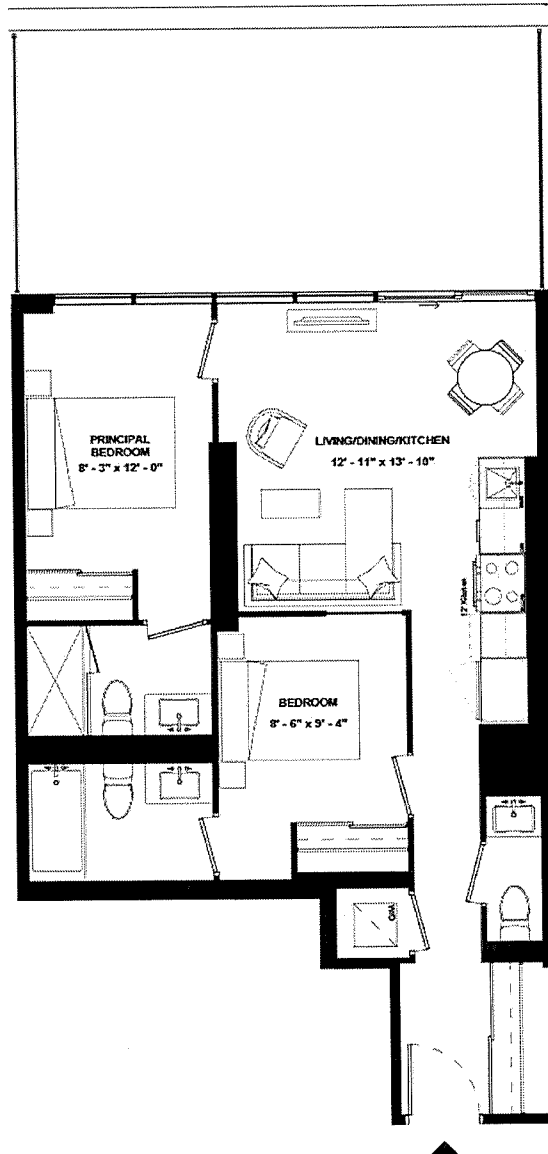
THE
9HUNDRED
SIGNATURE RESIDENCES

A2B-747

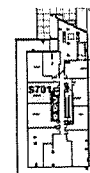
SUITE TYPE: 2B
SUITE AREA: 747 SQFT
BALCONY/TERRACE: 270 SQFT



HARHAY
DEVELOPMENTS



SUITE 701



ISSUE DATE: 2023/05/05



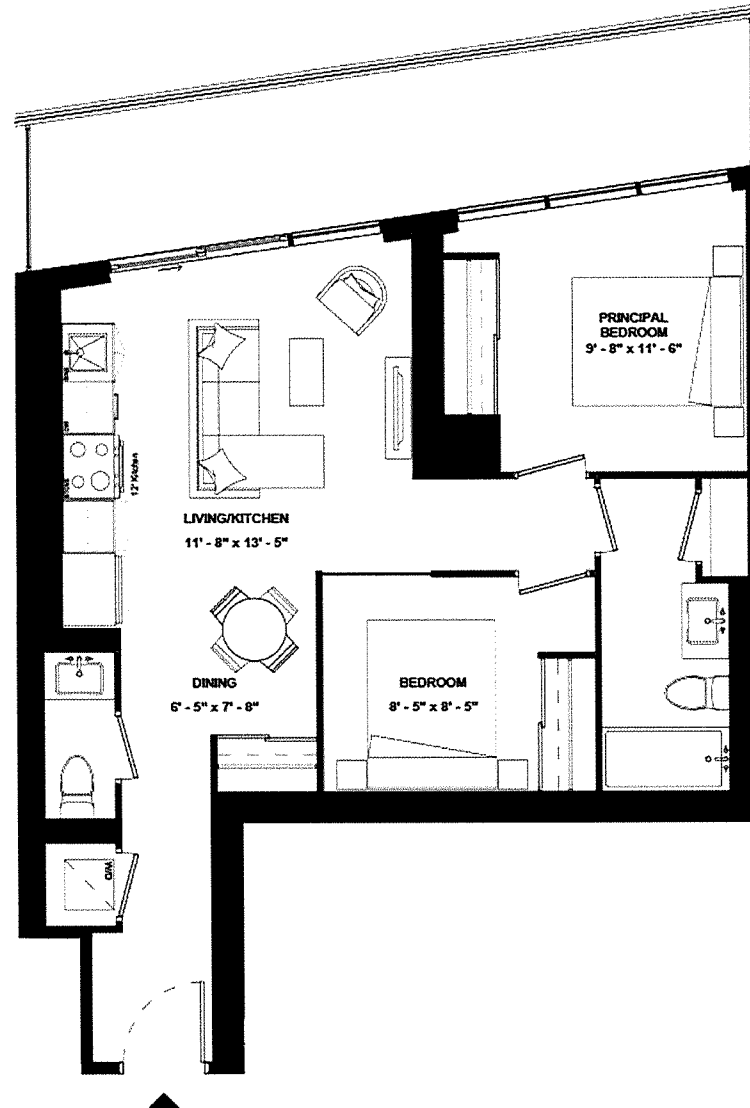
THE
9HUNDRED
SIGNATURE RESIDENCES

A2B-750

SUITE TYPE: 2B
SUITE AREA: 750 SQFT
BALCONY/TERRACE: 158 SQFT



HARHAY
DEVELOPMENTS



SUITE 1510

ISSUE DATE: 2023/05/05



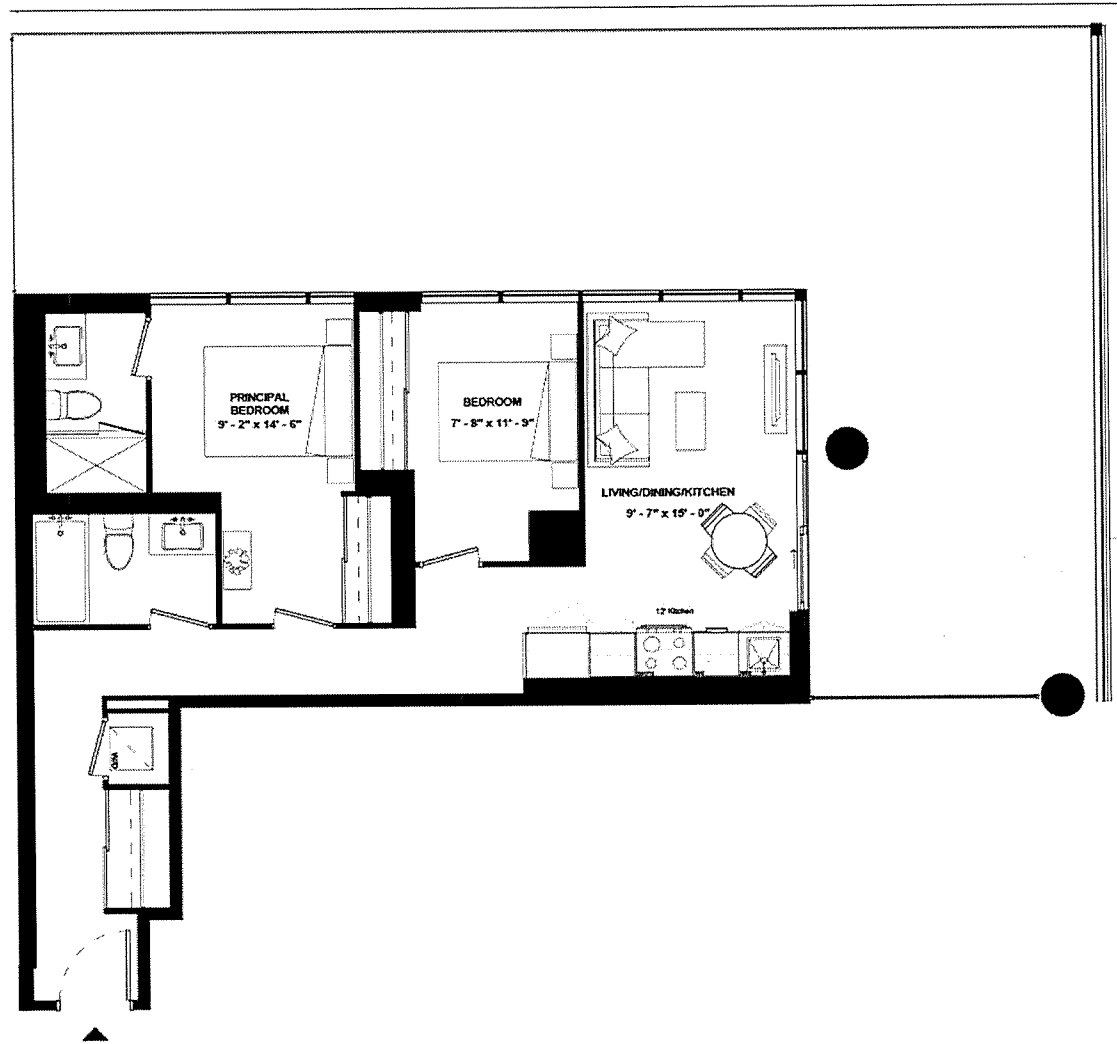
THE
9HUNDRED
SIGNATURE RESIDENCES

A2B-756

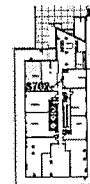
SUITE TYPE: 2B
SUITE AREA: 756 SQFT
BALCONY/TERRACE: 792 SQFT



HARHAY
DEVELOPMENTS



SUITE 702



ISSUE DATE: 2023/05/05



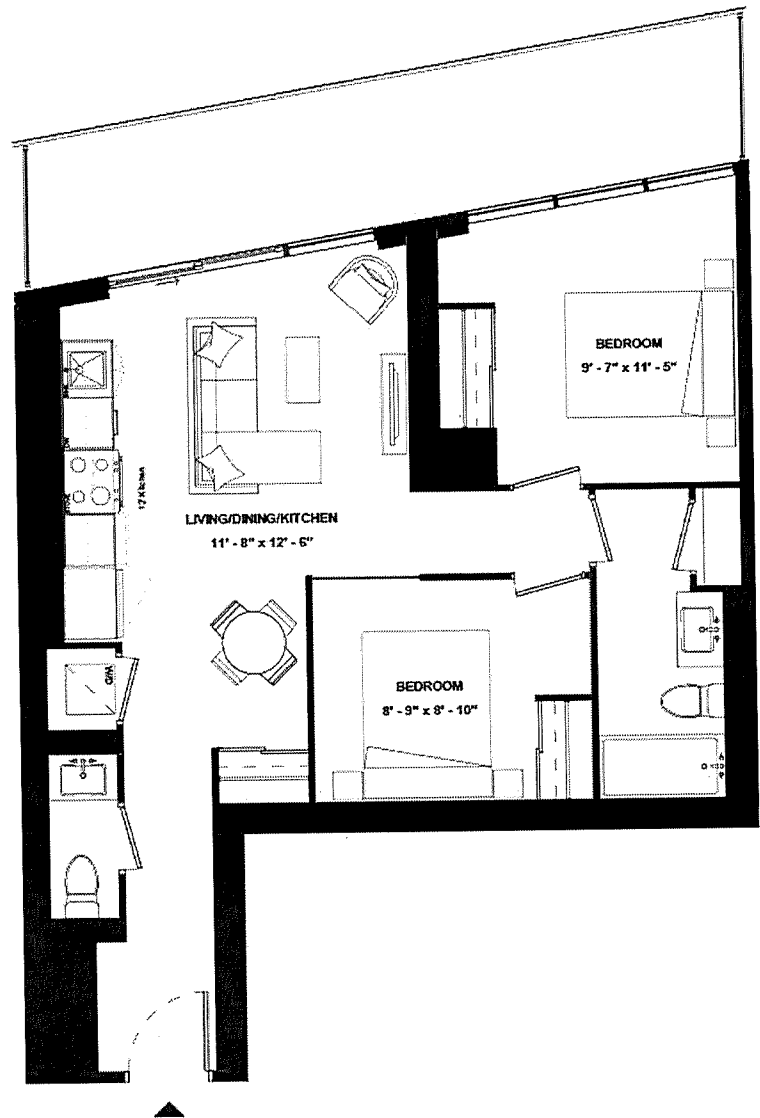
THE
9HUNDRED
SIGNATURE RESIDENCES

A2B-762

SUITE TYPE: 2B
SUITE AREA: 762 SQFT
BALCONY/TERRACE: 159 SQFT



HARHAY
DEVELOPMENTS



SUITE 1610



ISSUE DATE: 2023/05/05

Disclaimer: Drawings are not to scale. Materials, specifications, & floor plans are subject to change without notice. All renderings are artist's conceptions. All areas and stated room dimensions are approximate. Actual usable floor space may vary from the stated floor area. Floor area measured in accordance with Home Construction Regulatory Authority Directive, E.60.E. Balcony sizes and configurations vary depending on floor level locations.



THE
9HUNDRED
SIGNATURE RESIDENCES

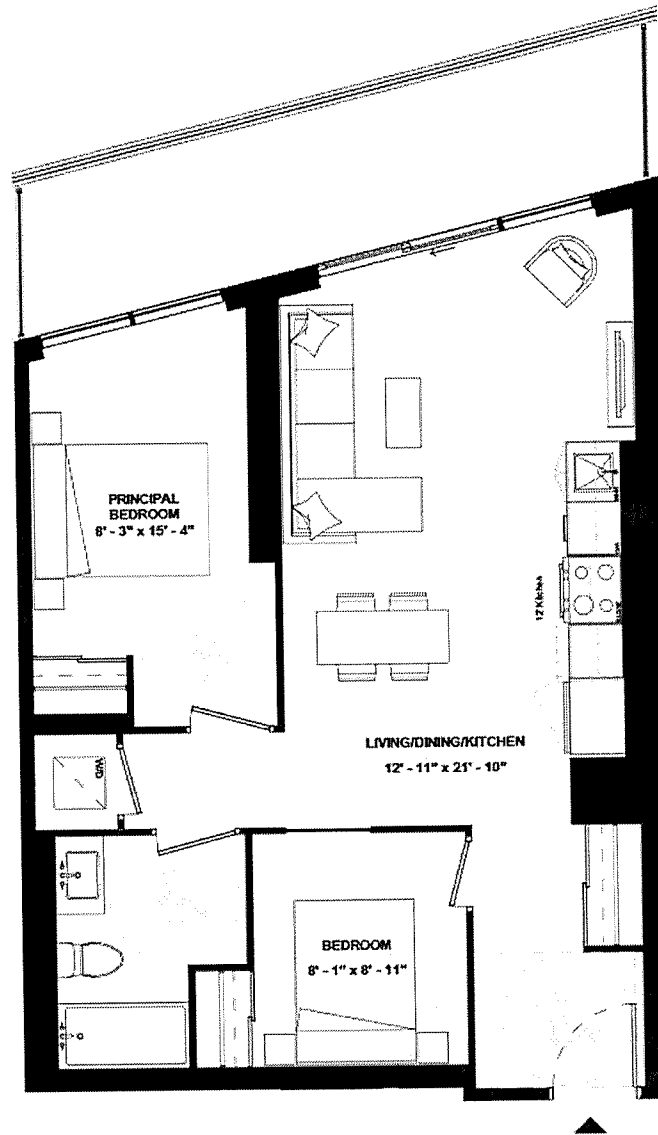
A2B(BF)-763

SUITE TYPE: 2B (BF)
SUITE AREA: 763 SQFT
BALCONY/TERRACE: 135 SQFT



HARHAY
DEVELOPMENTS

SUITE 1901



ISSUE DATE: 2023/05/05



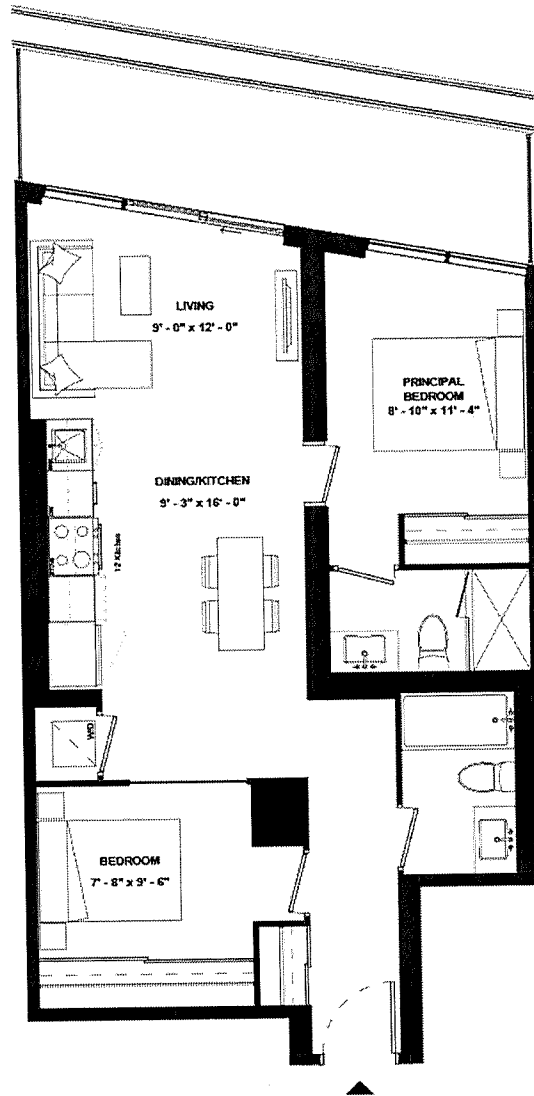
THE
9HUNDRED
SIGNATURE RESIDENCES

A2B-774

SUITE TYPE: 2B
SUITE AREA: 774 SQFT
BALCONY/TERRACE: 126 SQFT



HARHAY
DEVELOPMENTS



SUITE 1703



ISSUE DATE: 2023/05/05



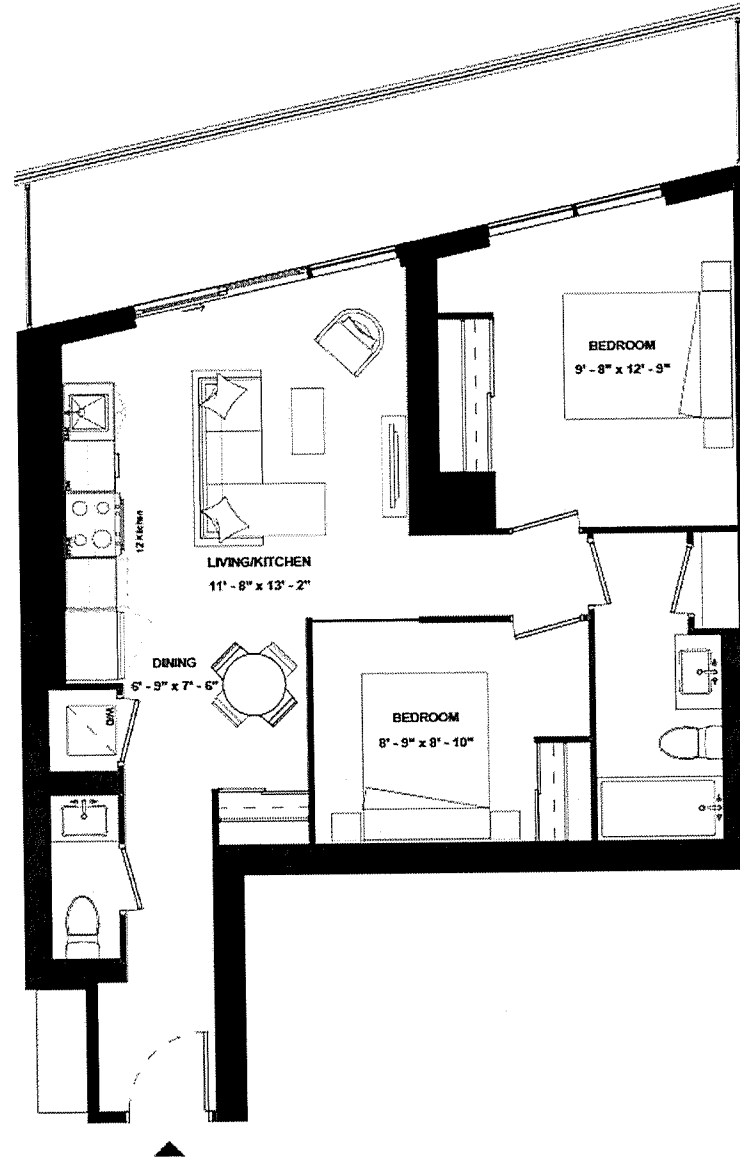
THE
9HUNDRED
SIGNATURE RESIDENCES

A2B-787

SUITE TYPE: 2B
SUITE AREA: 787 SQFT
BALCONY/TERRACE: 160 SQFT



HARHAY
DEVELOPMENTS



SUITE 1810



ISSUE DATE: 2023/05/05



THE
9HUNDRED
SIGNATURE RESIDENCES

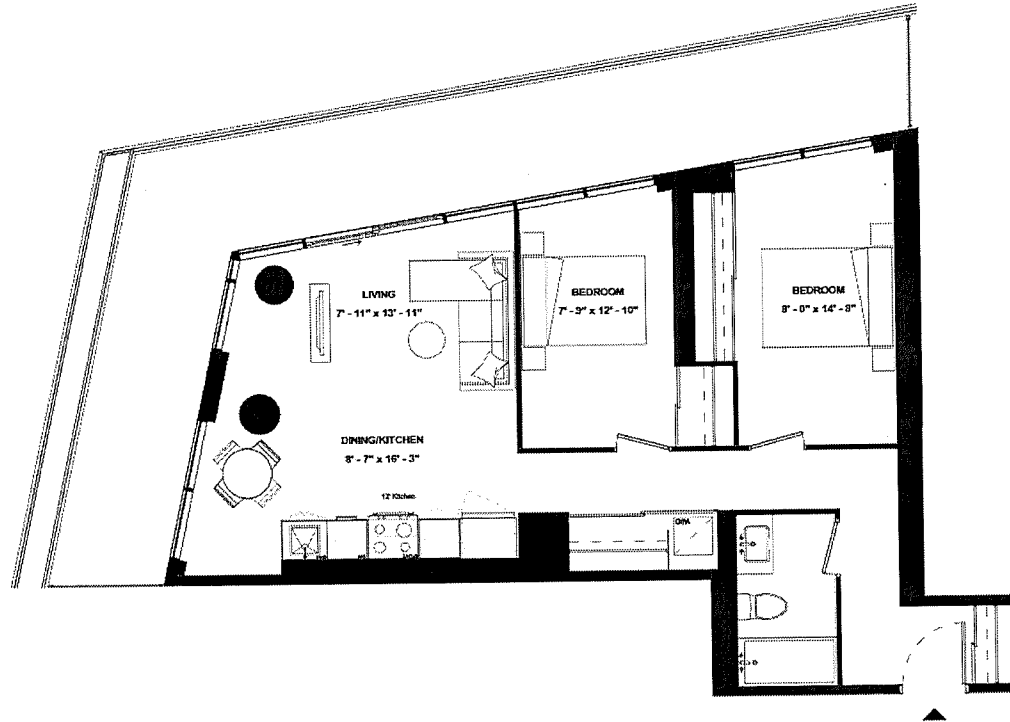
A2B-792

SUITE TYPE: 2B
SUITE AREA: 792 SQFT
BALCONY/TERRACE: 313 SQFT



HARHAY
DEVELOPMENTS

SUITE 1604



ISSUE DATE: 2023/05/05



THE
9HUNDRED
SIGNATURE RESIDENCES

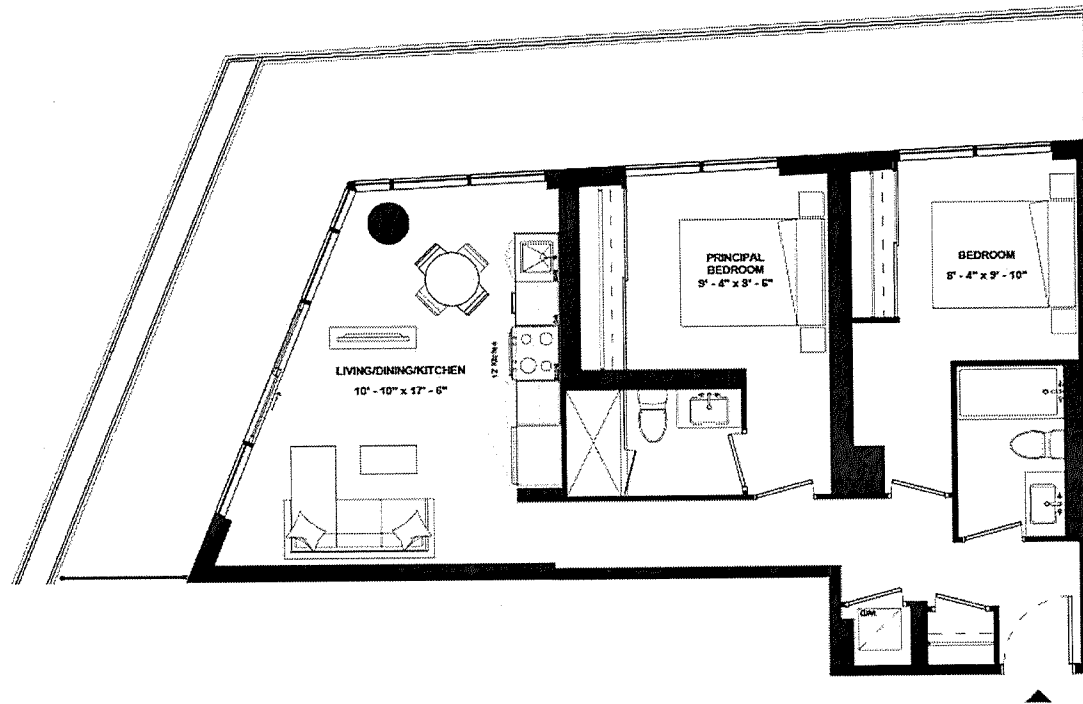
A2B-798

SUITE TYPE: 2B
SUITE AREA: 798 SQFT
BALCONY/TERRACE: 340 SQFT



HARHAY
DEVELOPMENTS

SUITE 1105



ISSUE DATE: 2023/05/05



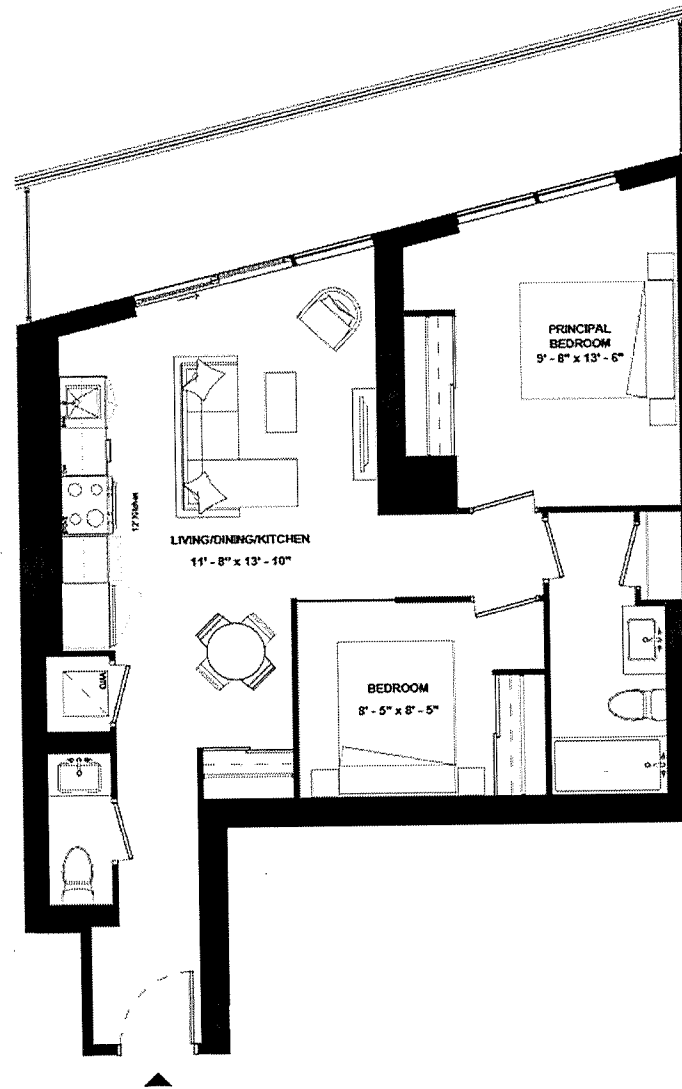
THE
9HUNDRED
SIGNATURE RESIDENCES

A2B-802

SUITE TYPE: 2B
SUITE AREA: 802 SQFT
BALCONY/TERRACE: 161 SQFT



HARHAY
DEVELOPMENTS



SUITE 1910

ISSUE DATE: 2023/05/05



THE
9HUNDRED
SIGNATURE RESIDENCES

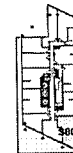
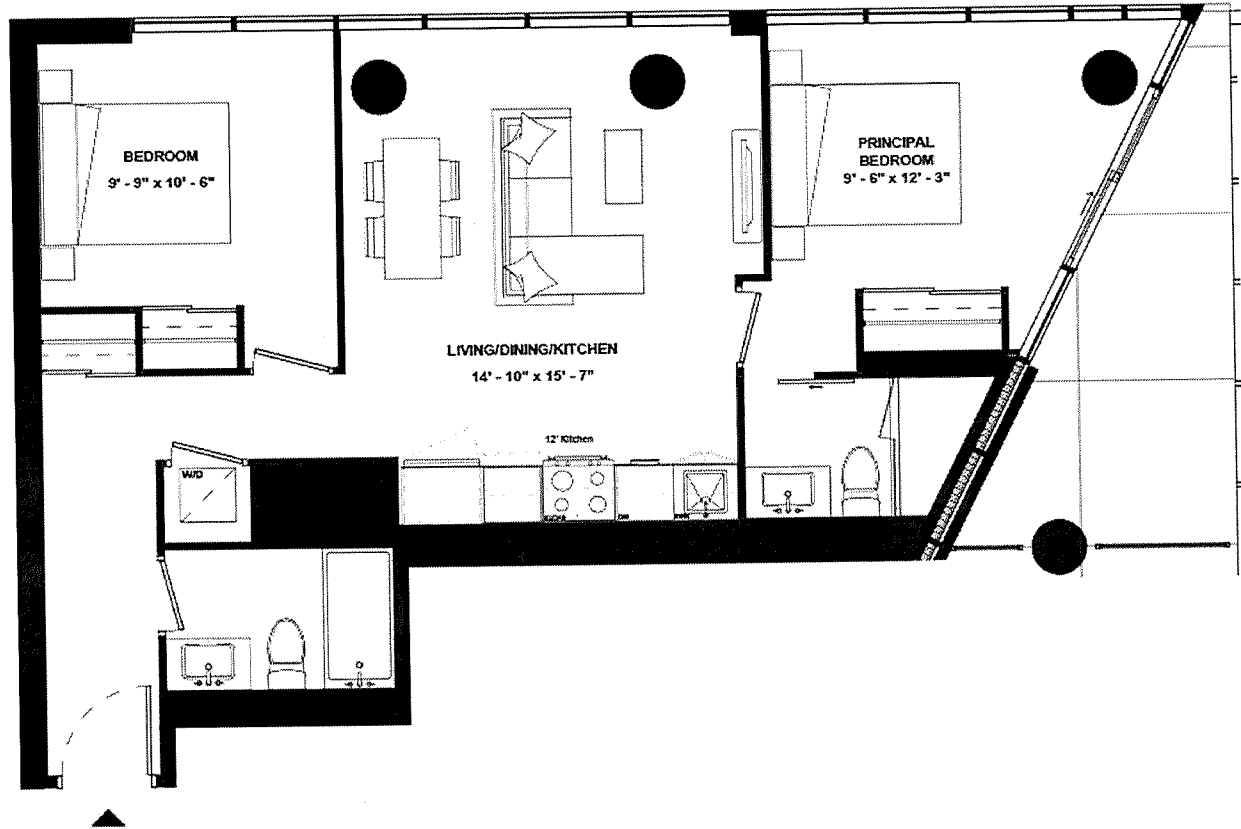
A2B-808

SUITE TYPE: 2B
SUITE AREA: 808 SQFT
BALCONY/TERRACE: 105 SQFT



HARHAY
DEVELOPMENTS

SUITE 809



ISSUE DATE: 2023/05/05



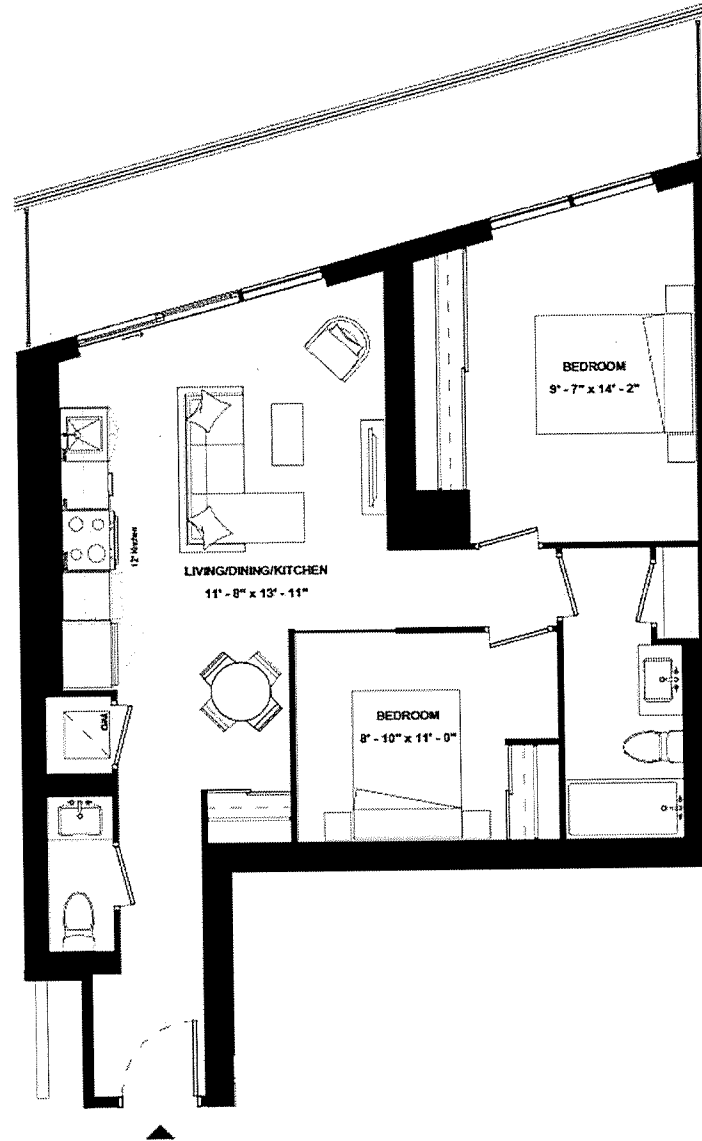
THE
9HUNDRED
SIGNATURE RESIDENCES

A2B-816

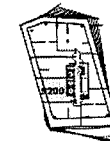
SUITE TYPE: 2B (GUG)
SUITE AREA: 816 SQFT
BALCONY/TERRACE: 162 SQFT



HARHAY
DEVELOPMENTS



SUITE 2007



ISSUE DATE: 2023/05/05



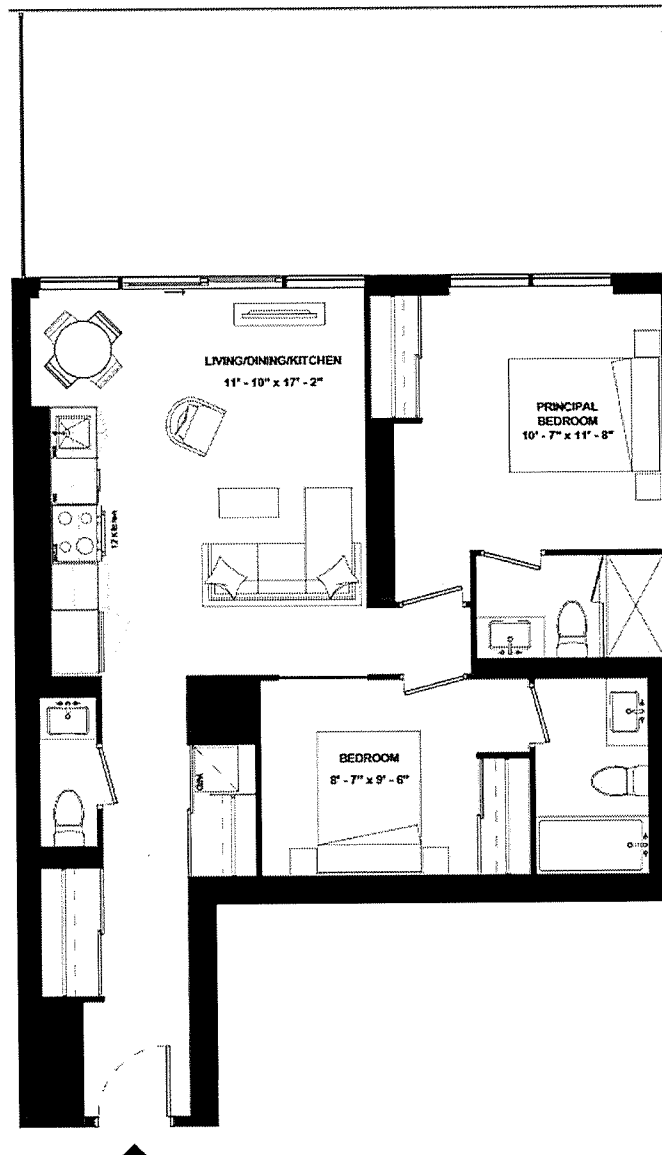
THE
9HUNDRED
SIGNATURE RESIDENCES

A2B-865

SUITE TYPE: 2B (GUG)
SUITE AREA: 865 SQFT
BALCONY/TERRACE: 325 SQFT



HARHAY
DEVELOPMENTS



SUITE 710



ISSUE DATE: 2023/05/05



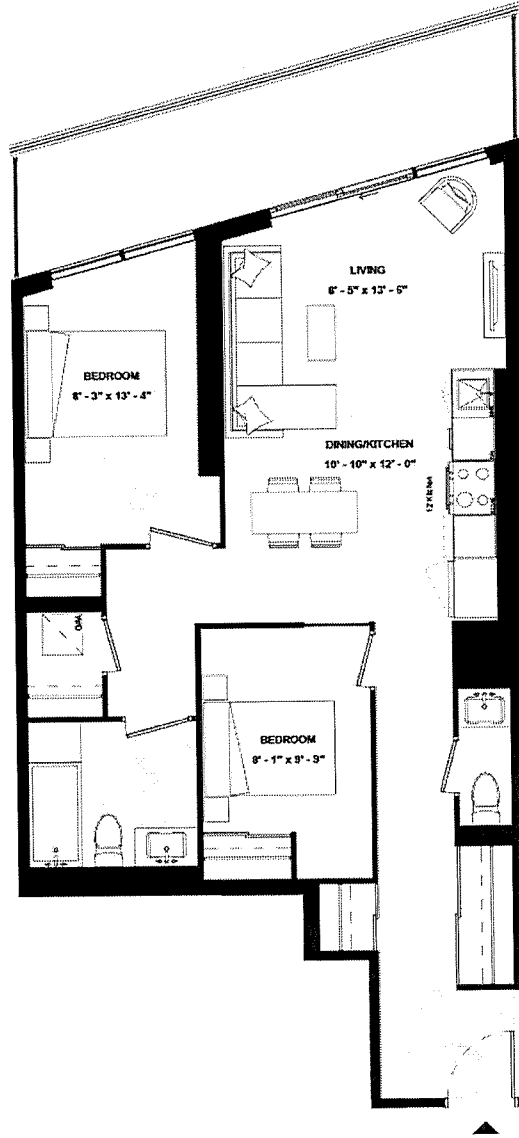
THE
9HUNDRED
SIGNATURE RESIDENCES

A2B(BF)-875

SUITE TYPE: 2B (BF)(GUG)
SUITE AREA: 875 SQFT
BALCONY/TERRACE: 136 SQFT



HARHAY
DEVELOPMENTS



SUITE 2001

ISSUE DATE: 2023/05/05



THE
9HUNDRED
SIGNATURE RESIDENCES

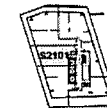
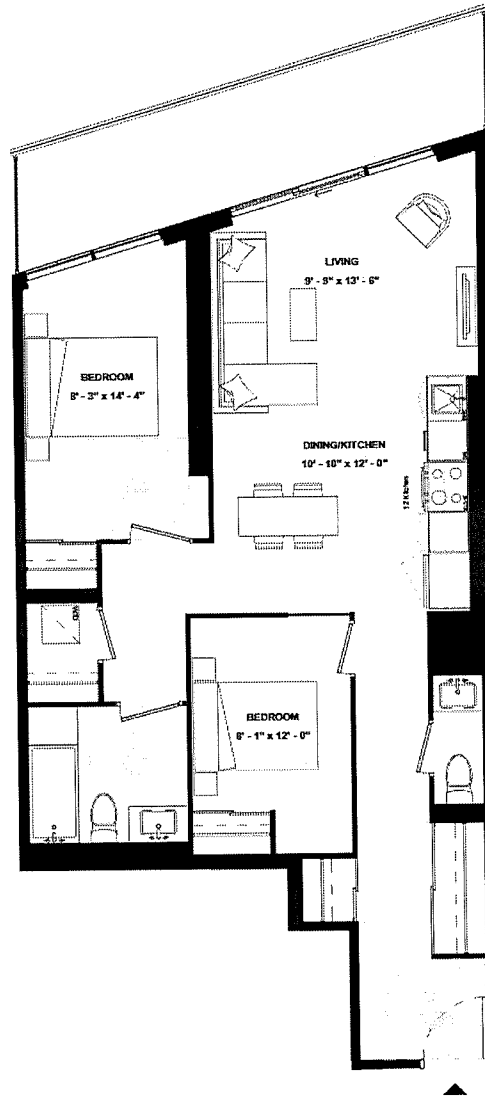
A2B(BF)-905

SUITE TYPE: 2B (BF)(GUG)
SUITE AREA: 905 SQFT
BALCONY/TERRACE: 137 SQFT



HARHAY
DEVELOPMENTS

SUITE 2101



ISSUE DATE: 2023/05/05



THE
9HUNDRED
SIGNATURE RESIDENCES

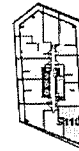
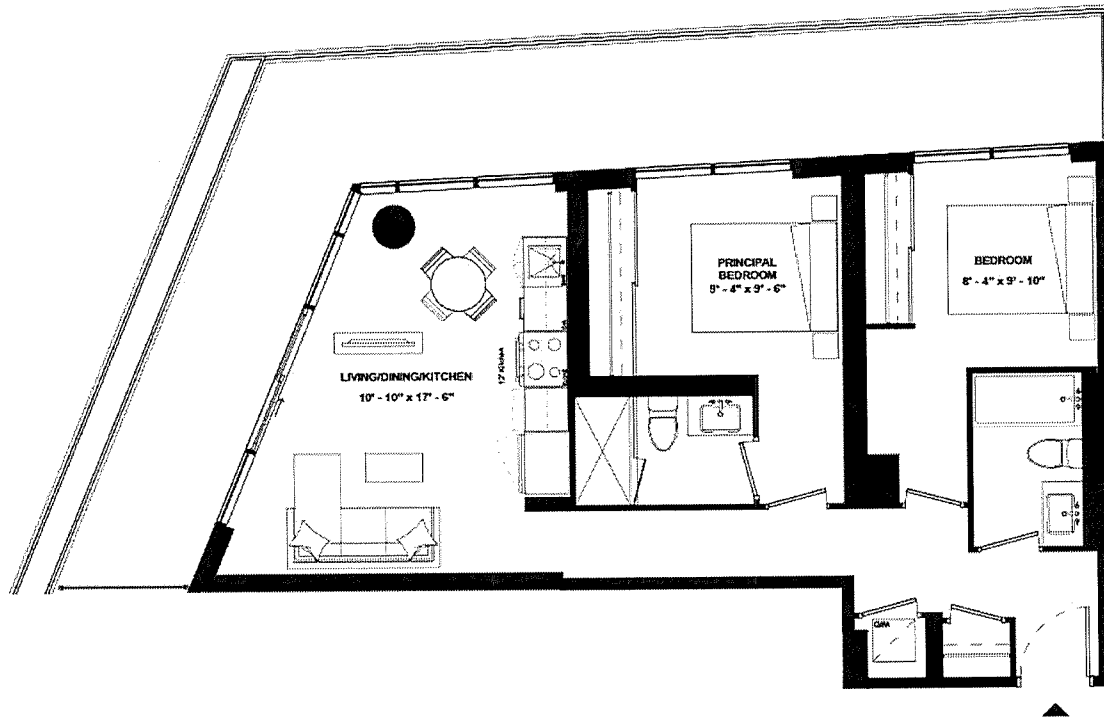
A2B-961

SUITE TYPE: 2B (GUG)
SUITE AREA: 961 SQFT
BALCONY/TERRACE: 270 SQFT



HARHAY
DEVELOPMENTS

SUITE 1108



ISSUE DATE: 2023/05/05