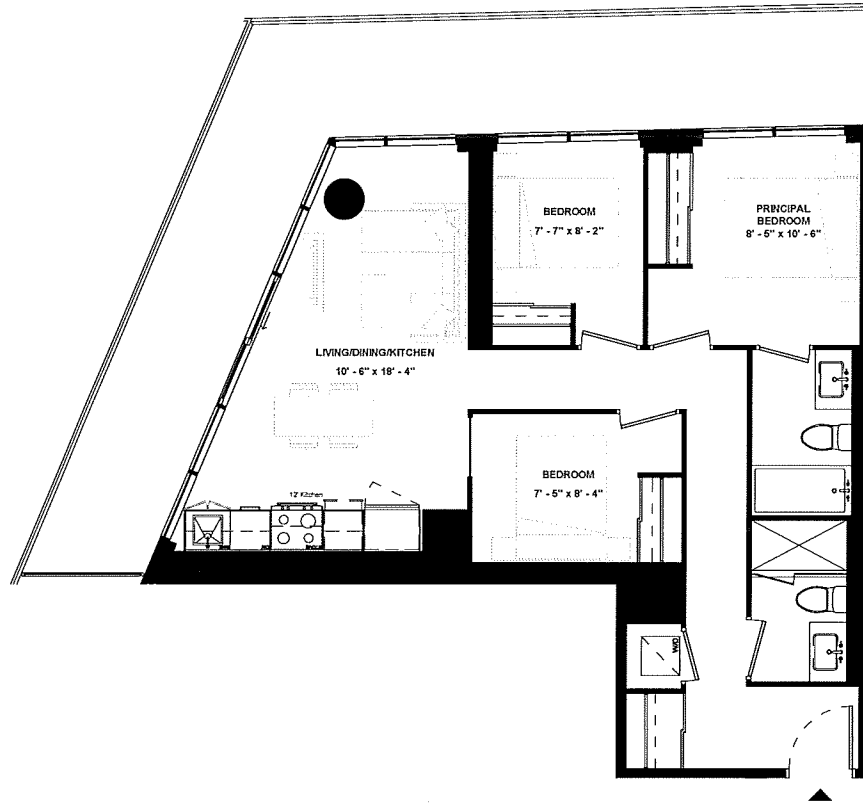


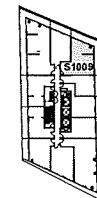
SUITE 1009



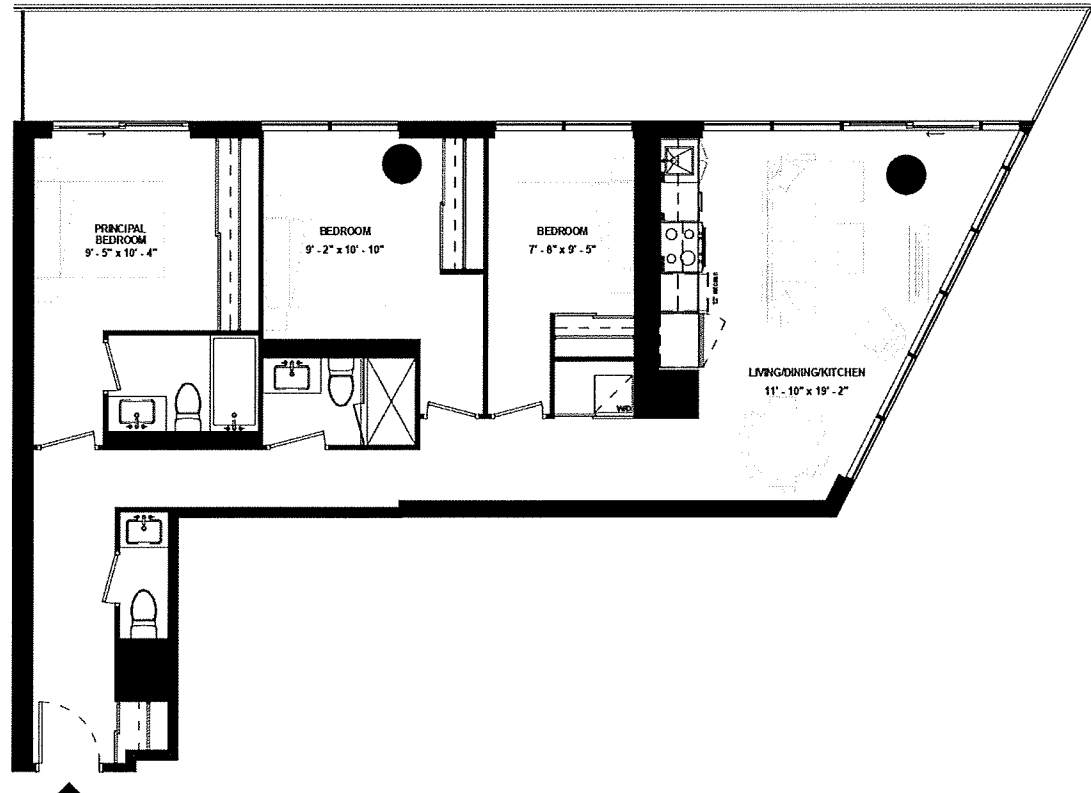
SUITE TYPE: 3B
SUITE AREA: 847 SQFT
BALCONY / TERRACE: 310 SQFT



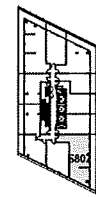
ISSUE DATE: 2023/06/02



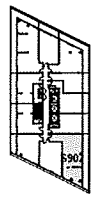
SUITE 802 & SUITE 902



SUITE TYPE: 3B
 SUITE AREA: 1079 SQFT
 BALCONY / TERRACE: 296 SQFT



LEVEL 08



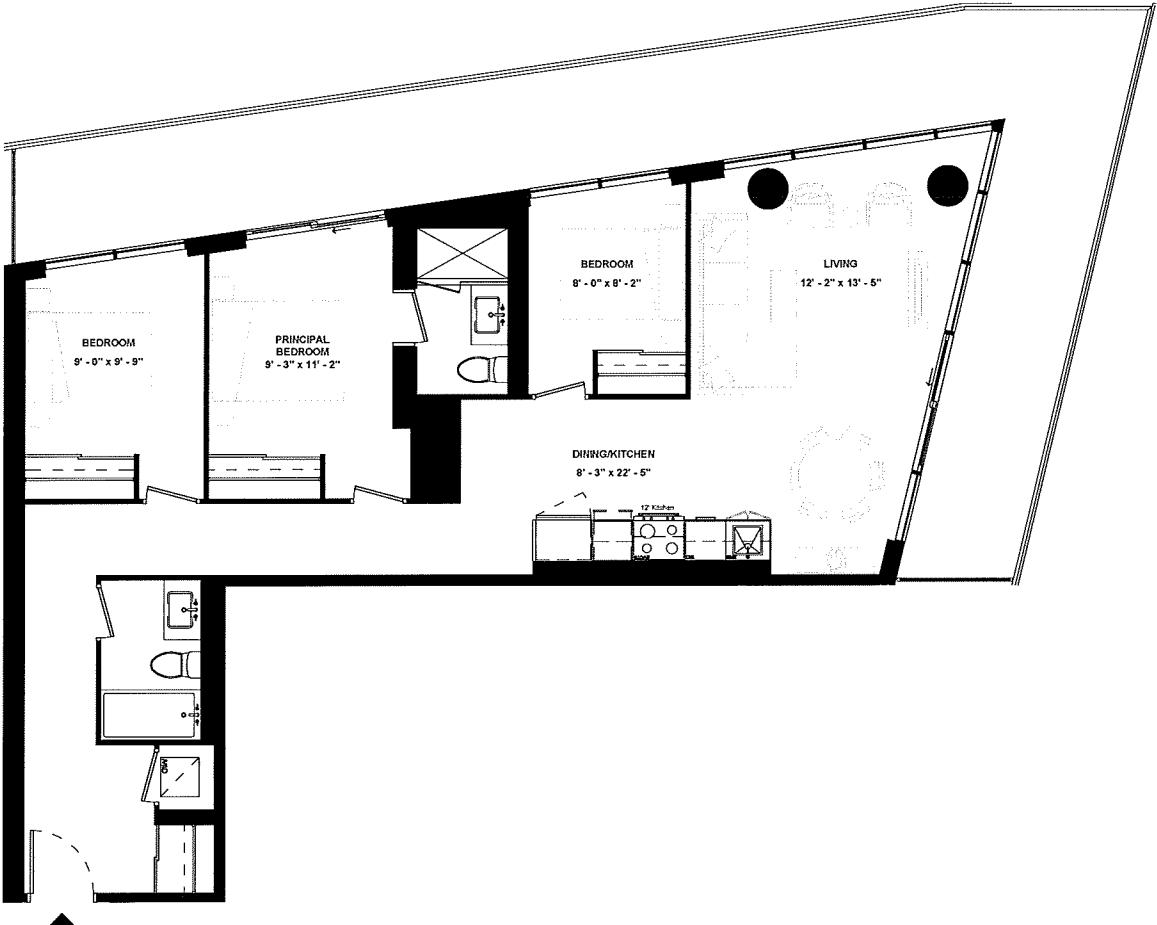
LEVEL 09



ISSUE DATE: 2023/06/02

Disclaimer: Drawings are not to scale. Materials, specifications, & floor plans are subject to change without notice. All renderings are artist's conceptions. All areas and stated room dimensions are approximate. Actual usable floor space may vary from the stated floor area. Floor area measured in accordance with Home Construction Regulatory Authority Directive, E & O E. Balcony sizes and configurations vary depending on floor level locations.

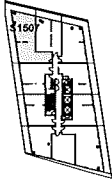
SUITE 1507



SUITE TYPE: 3B
 SUITE AREA: 1087 SQFT
 BALCONY / TERRACE: 443 SQFT

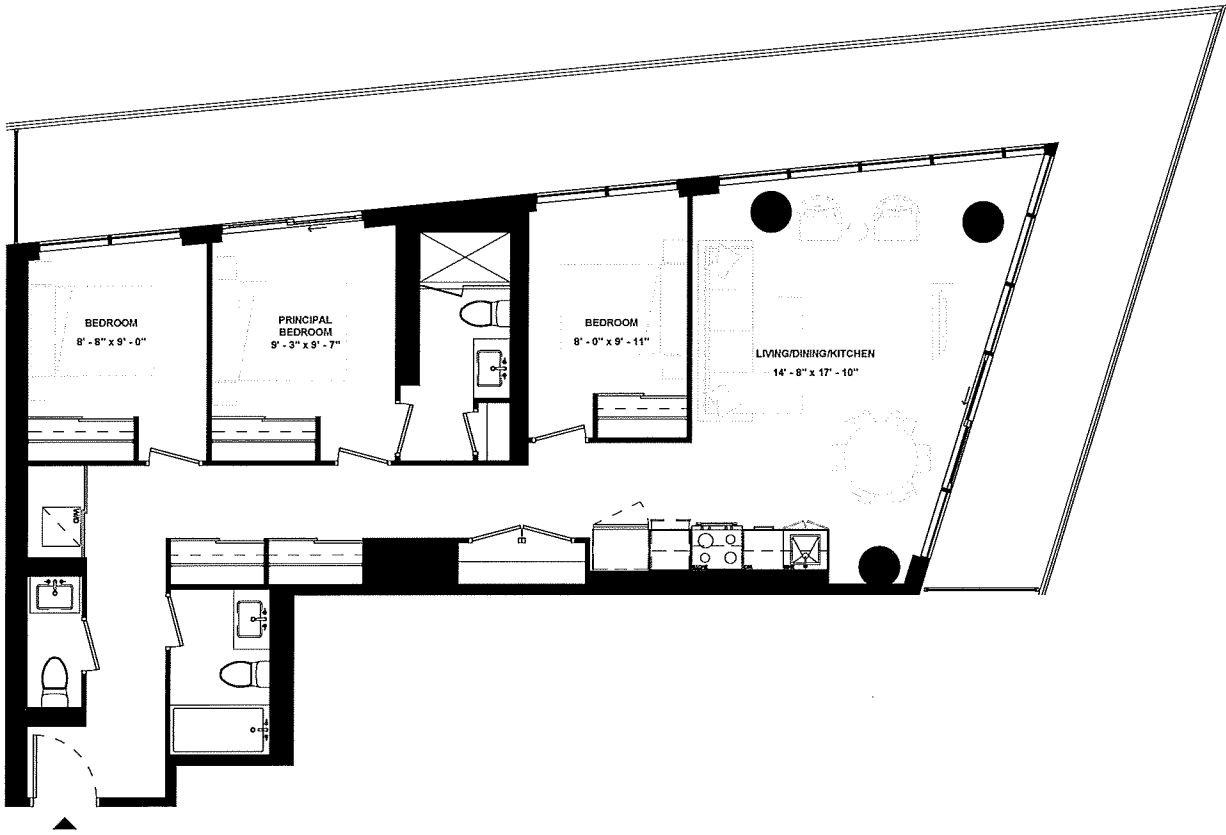


ISSUE DATE: 2023/06/02

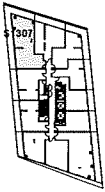


Disclaimer: Drawings are not to scale. Materials, specifications, & floor plans are subject to change without notice. All renderings are artist's conceptions. All areas and stated room dimensions are approximate. Actual usable floor space may vary from the stated floor area. Floor area measured in accordance with Home Construction Regulatory Authority Directive, E.&O.E. Balcony sizes and configurations vary depending on floor level locations.

SUITE 1307



SUITE TYPE: 3B
 SUITE AREA: 1114 SQFT
 BALCONY / TERRACE: 460 SQFT



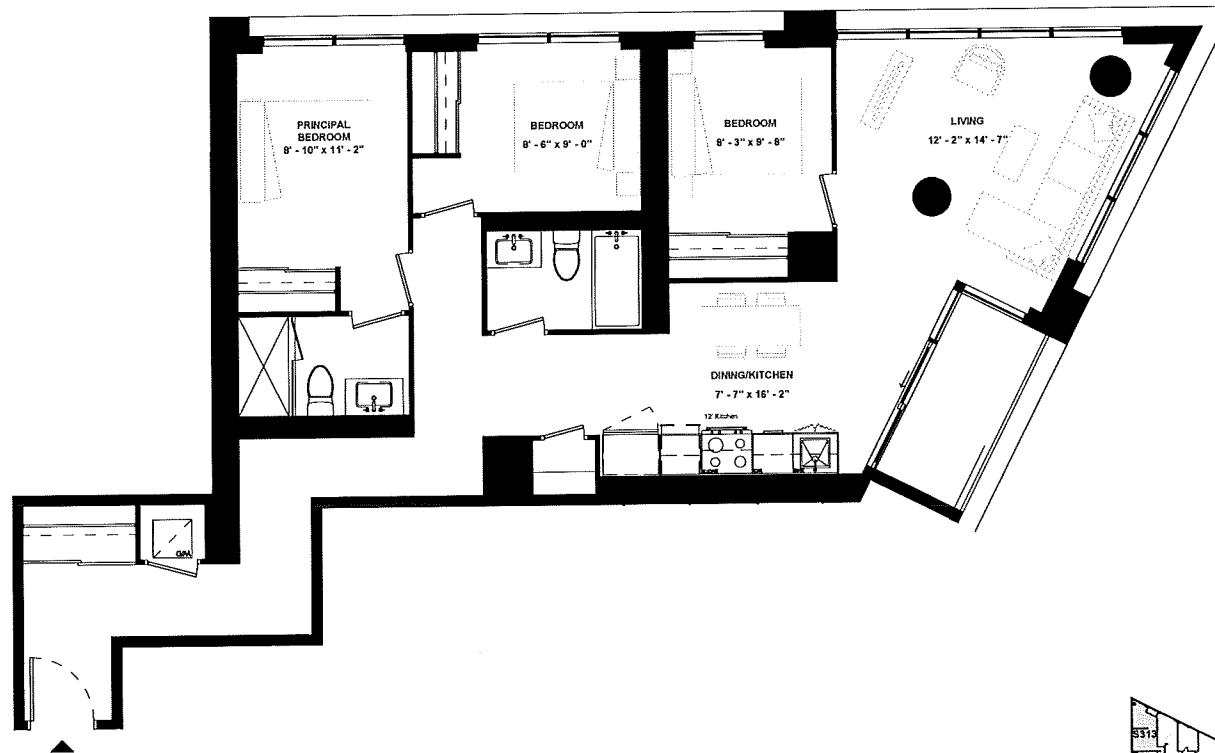
LEVEL 13



ISSUE DATE: 2023/06/02

Disclaimer: Drawings are not to scale. Materials, specifications, & floor plans are subject to change without notice. All renderings are artist's conceptions. All areas and stated room dimensions are approximate. Actual usable floor space may vary from the stated floor area. Floor area measured in accordance with Home Construction Regulatory Authority Directive. E.&O.E. Balcony sizes and configurations vary depending on floor level locations.

**SUITE 313 &
SUITE 413 &
SUITE 513**



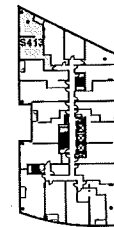
SUITE TYPE: 3B
 SUITE AREA: 1123 SQFT
 BALCONY / TERRACE: 45 SQFT



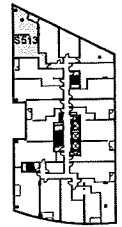
ISSUE DATE: 2023/08/02



LEVEL 03



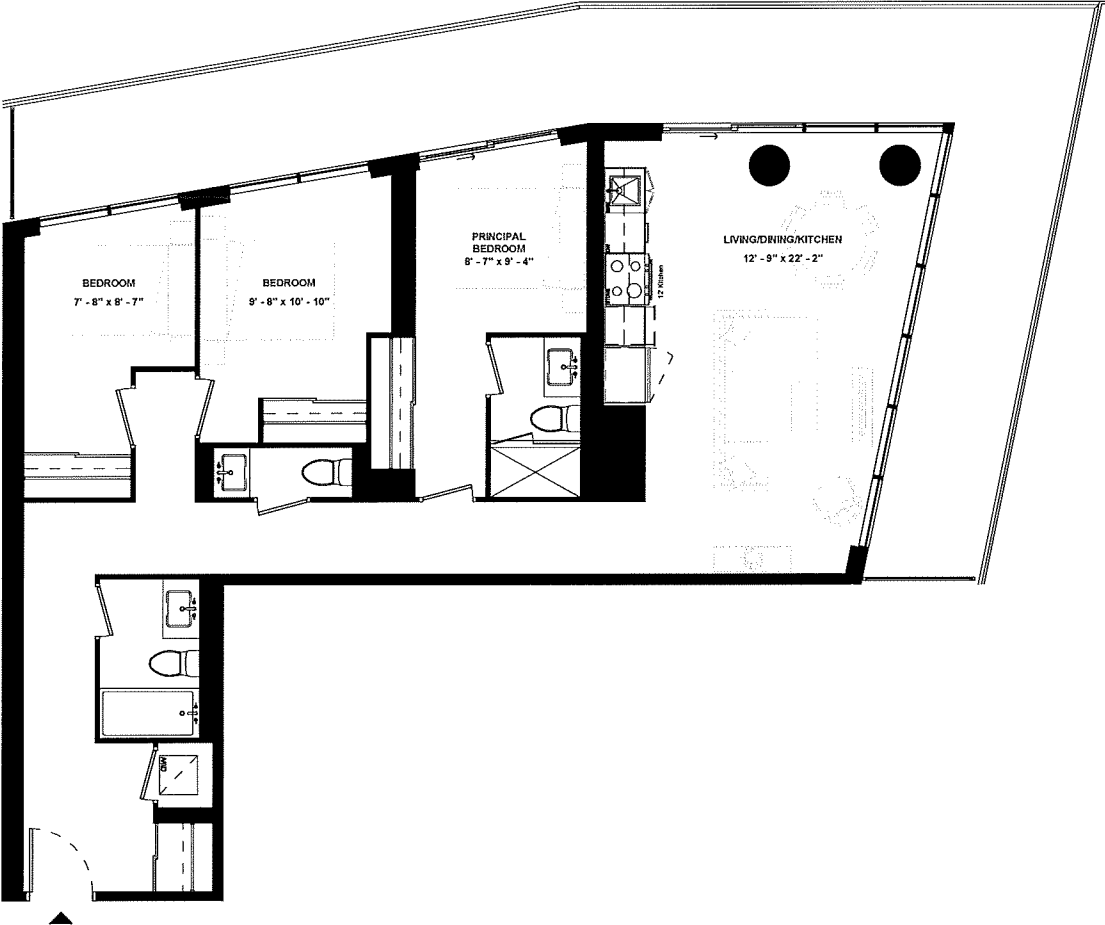
LEVEL 04



LEVEL 05

Disclaimer: Drawings are not to scale. Materials, specifications, & floor plans are subject to change without notice. All renderings are artist's conceptions. All areas and stated room dimensions are approximate. Actual usable floor space may vary from the stated floor area. Floor area measured in accordance with Home Construction Regulatory Authority Directive, E.&O.E. Balcony sizes and configurations vary depending on floor level locations.

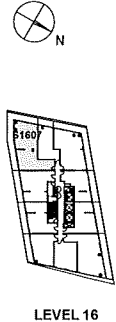
SUITE 1607



SUITE TYPE: 3B
 SUITE AREA: 1142 SQFT
 BALCONY / TERRACE: 428 SQFT

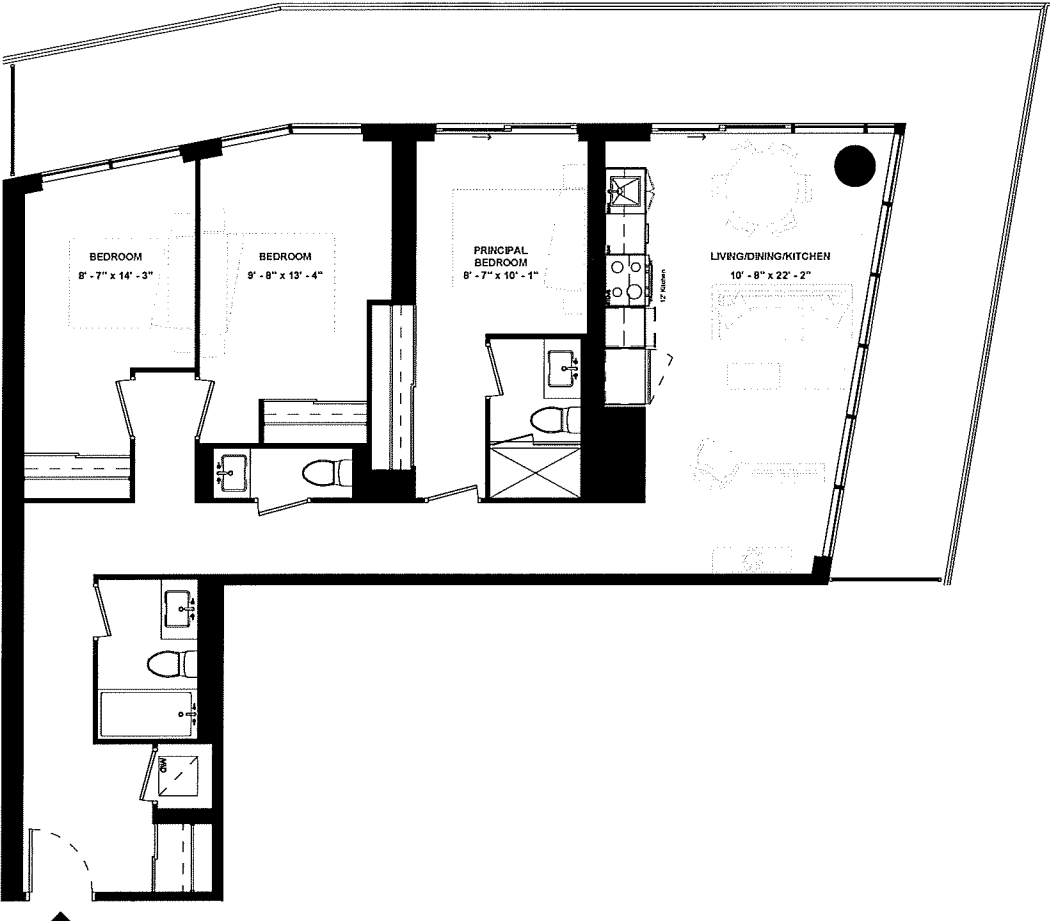


ISSUE DATE: 2023/06/02



Disclaimer: Drawings are not to scale. Materials, specifications, & floor plans are subject to change without notice. All renderings are artist's conceptions. All areas and slated room dimensions are approximate. Actual usable floor space may vary from the slated floor area. Floor area measured in accordance with Home Construction Regulatory Authority Directive, E.&O.E. Balcony sizes and configurations vary depending on floor level locations.

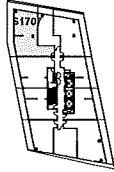
SUITE 1707



SUITE TYPE: 3B
 SUITE AREA: 1146 SQFT
 BALCONY / TERRACE: 411 SQFT



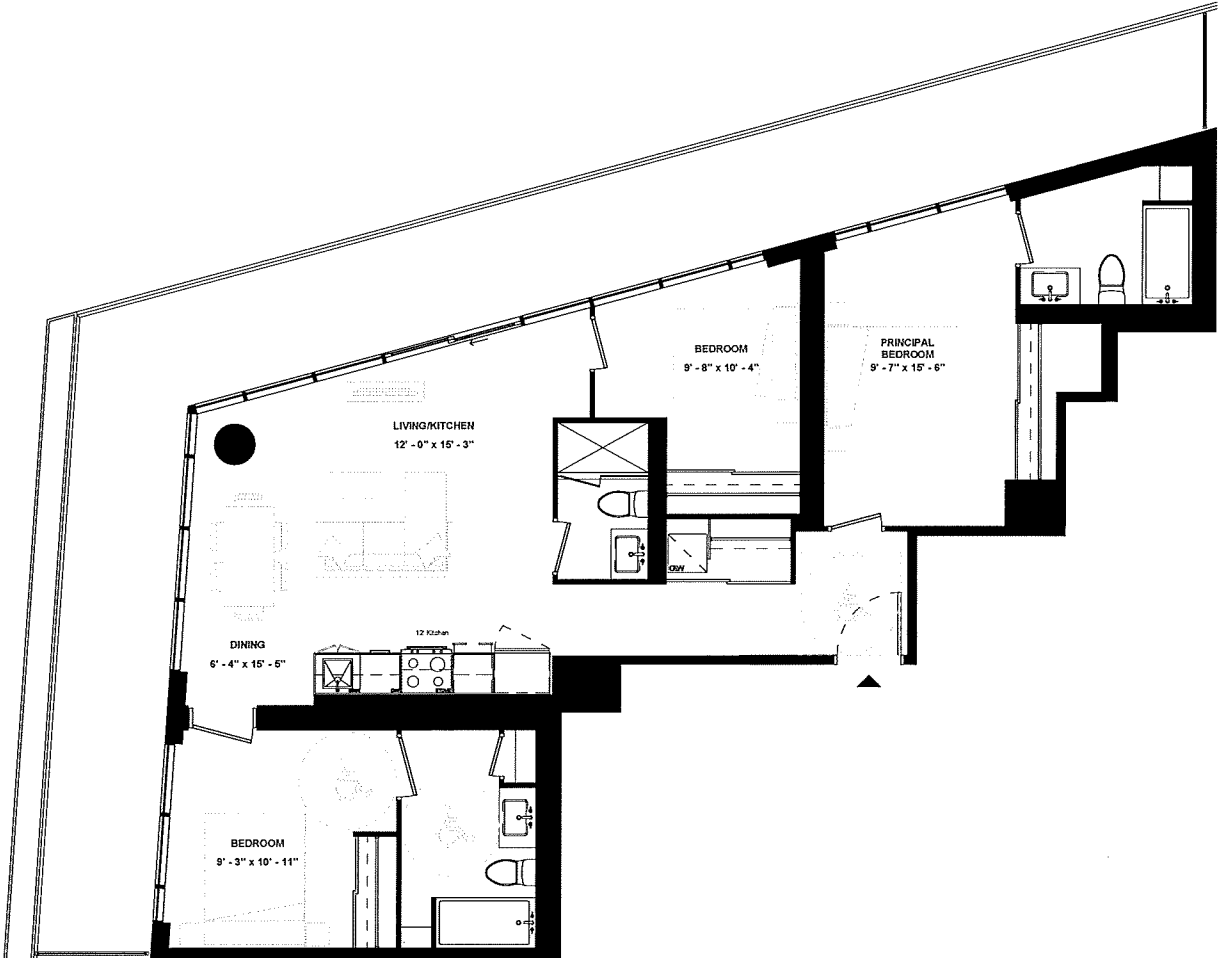
ISSUE DATE: 2023/06/02



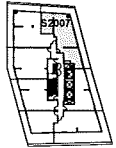
LEVEL 17

Disclaimer: Drawings are not to scale. Materials, specifications, & floor plans are subject to change without notice. All renderings are artist's conceptions. All areas and stated room dimensions are approximate. Actual usable floor space may vary from the stated floor area. Floor area measured in accordance with Home Construction Regulatory Authority Directive, E.&O.E. Balcony sizes and configurations vary depending on floor level locations.

SUITE 2007



SUITE TYPE: 3B (BF)
 SUITE AREA: 1172 SQFT
 BALCONY / TERRACE: 471 SQFT



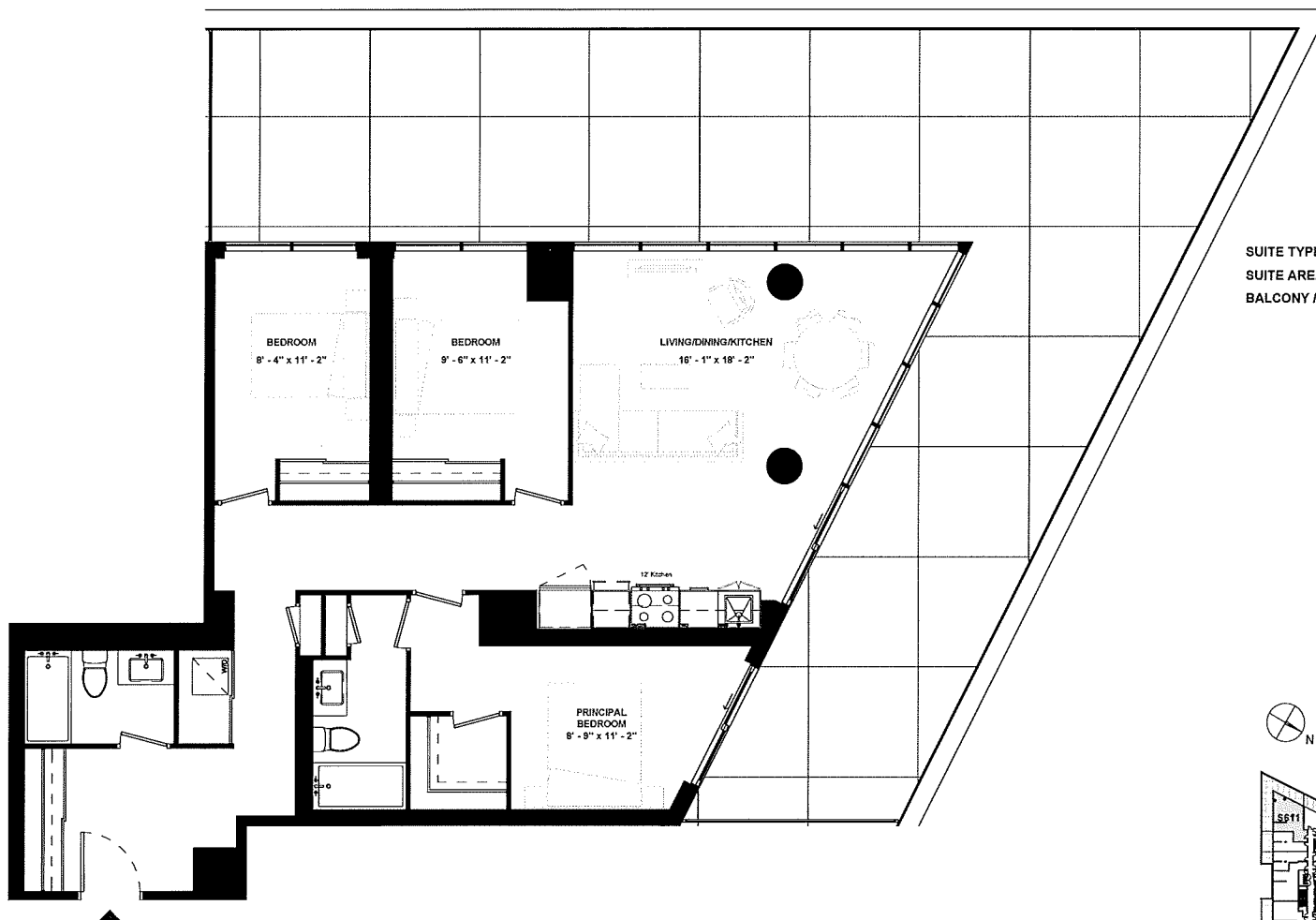
LEVEL 20



ISSUE DATE: 2023/06/02

Disclaimer: Drawings are not to scale. Materials, specifications, & floor plans are subject to change without notice. All renderings are artist's conceptions. All areas and stated room dimensions are approximate. Actual usable floor space may vary from the stated floor area. Floor area measured in accordance with Home Construction Regulatory Authority Directive, E.S.O.E. Balcony sizes and configurations vary depending on floor level locations.

SUITE 611



SUITE TYPE: 3B
SUITE AREA: 1204 SQFT
BALCONY / TERRACE: 962 SQFT



ISSUE DATE: 2023/06/02

LEVEL 06

Disclaimer: Drawings are not to scale. Materials, specifications, & floor plans are subject to change without notice. All renderings are artist's conceptions. All areas and stated room dimensions are approximate. Actual usable floor space may vary from the stated floor area. Floor area measured in accordance with Home Construction Regulatory Authority Directive, E.&O.E. Balcony sizes and configurations vary depending on floor level locations.