



THE
9HUNDRED
SIGNATURE RESIDENCES

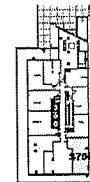
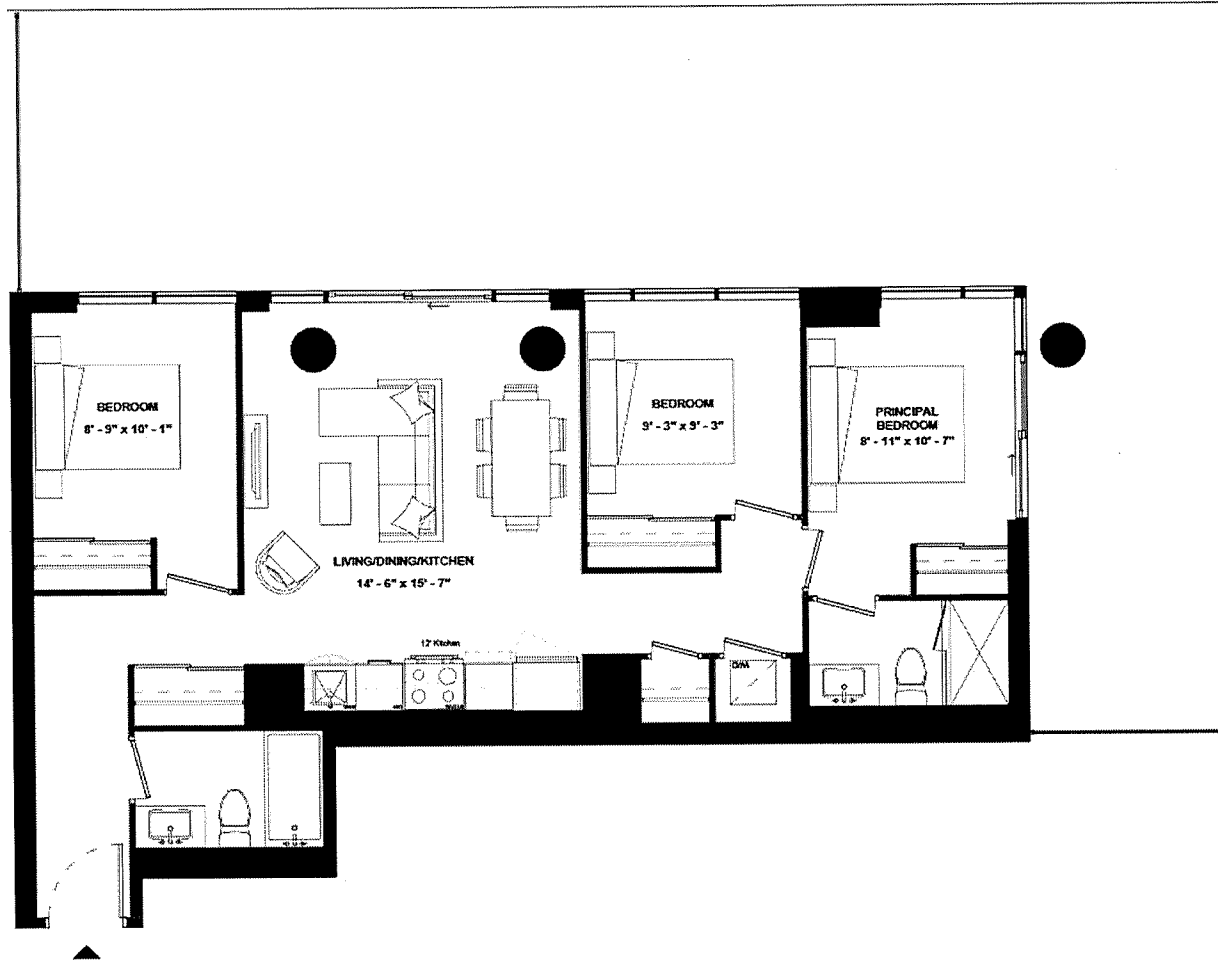
A3B-928

SUITE TYPE: 3B
SUITE AREA: 928 SQFT
BALCONY/TERRACE: 775 SQFT



HARHAY
DEVELOPMENTS

SUITE 707



ISSUE DATE: 2023/05/05



THE
9HUNDRED
SIGNATURE RESIDENCES

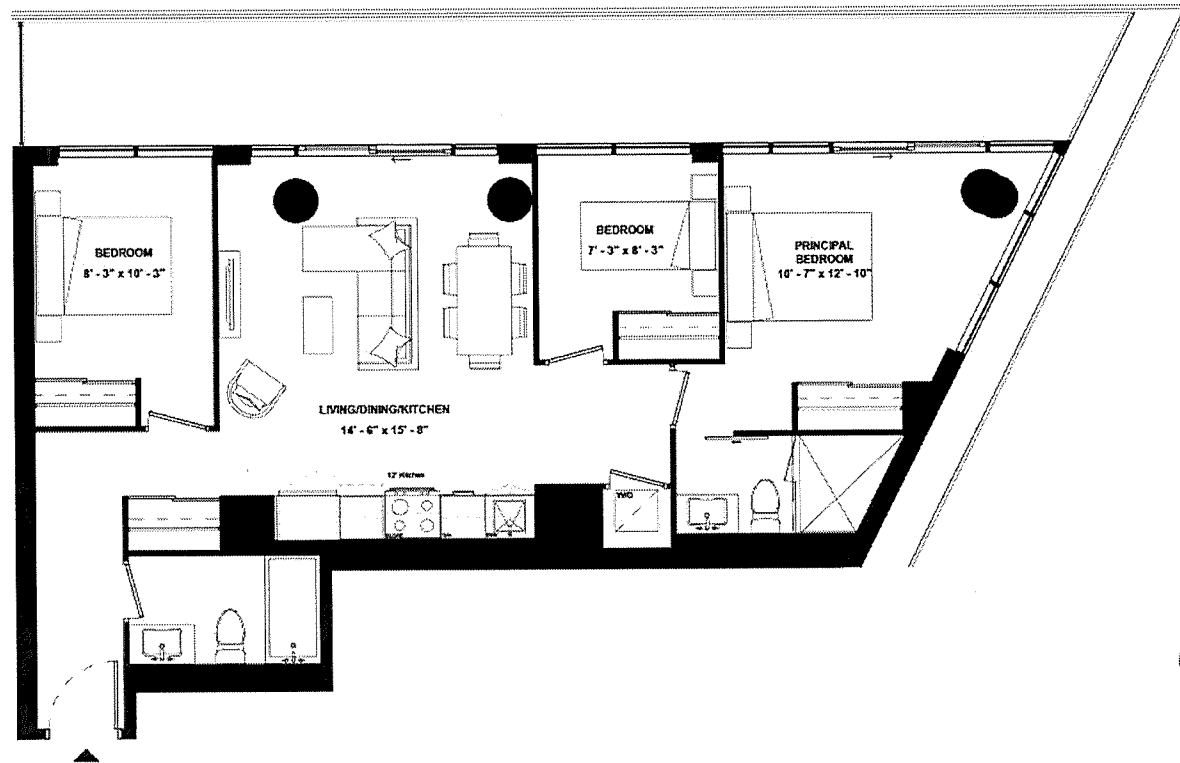
A3B-937

SUITE TYPE: 3B
SUITE AREA: 937 SQFT
BALCONY/TERRACE: 272 SQFT



HARHAY
DEVELOPMENTS

SUITE 909



ISSUE DATE: 2023/05/05



THE
9HUNDRED
SIGNATURE RESIDENCES

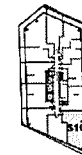
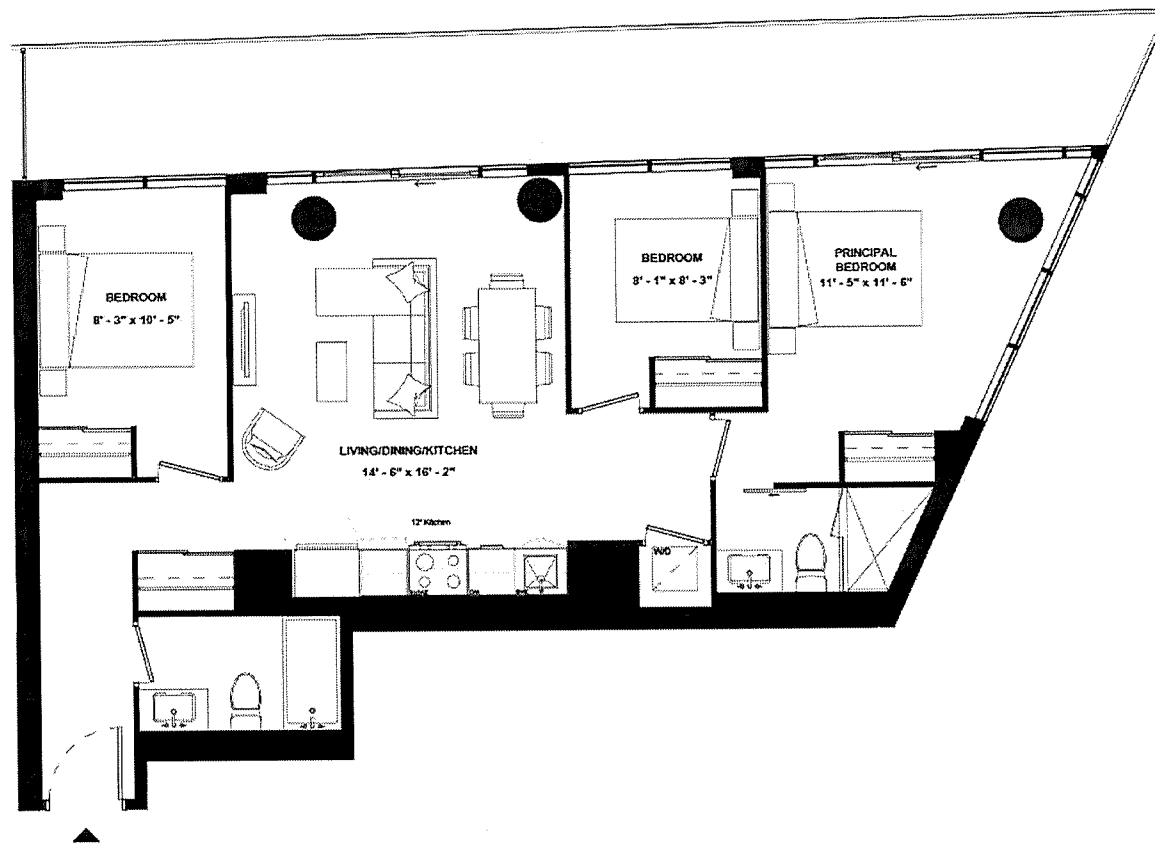
A3B-949

SUITE TYPE: 3B
SUITE AREA: 949 SQFT
BALCONY/TERRACE: 277 SQFT



HARHAY
DEVELOPMENTS

SUITE 1009



ISSUE DATE: 2023/05/05



THE
9HUNDRED
SIGNATURE RESIDENCES

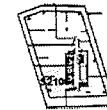
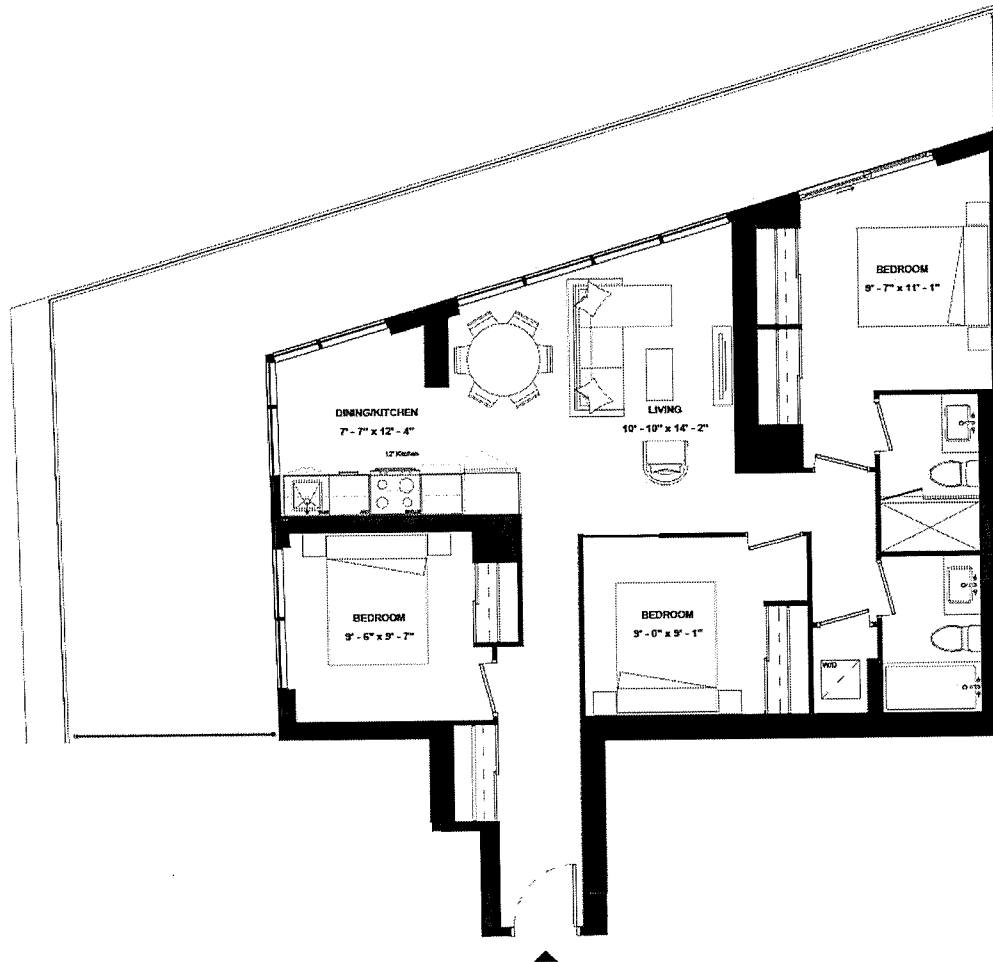
A3B-1004

SUITE TYPE: 3B (GUG)
SUITE AREA: 1004 SQFT
BALCONY/TERRACE: 459 SQFT



HARHAY
DEVELOPMENTS

SUITE 2106



ISSUE DATE: 2023/05/05



THE
9HUNDRED
SIGNATURE RESIDENCES

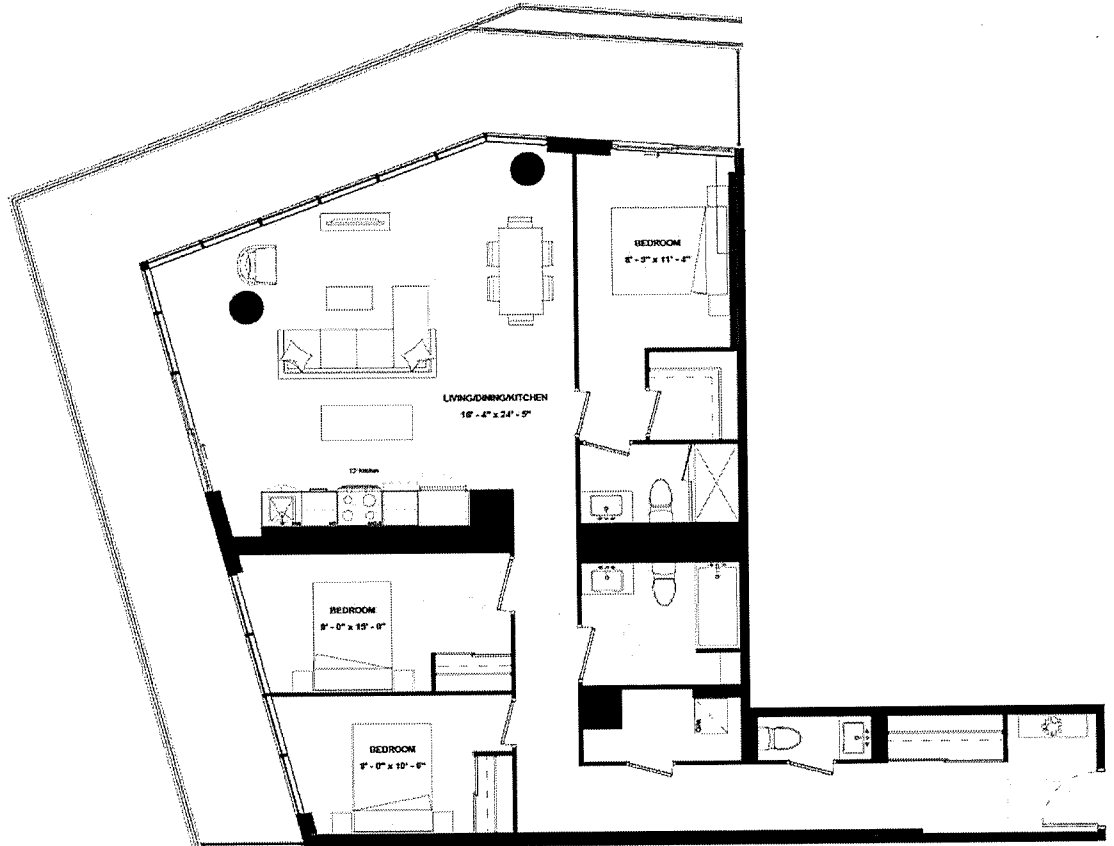
A3B(BF)-1351

SUITE TYPE: 3B (BF)(GUG)
SUITE AREA: 1351 SQFT
BALCONY/TERRACE: 420 SQFT



HARHAY
DEVELOPMENTS

SUITE 2002



ISSUE DATE: 2023/05/05

Disclaimer: Drawings are not to scale. Materials, specifications, & floor plans are subject to change without notice. All renderings are artist's conceptions. All areas and stated room dimensions are approximate. Actual usable floor space may vary from the stated floor area. Floor area measured in accordance with Home Construction Regulatory Authority Directive. E.&O.E. Balcony sizes and configurations vary depending on floor level locations.



THE
9HUNDRED
SIGNATURE RESIDENCES

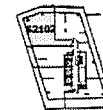
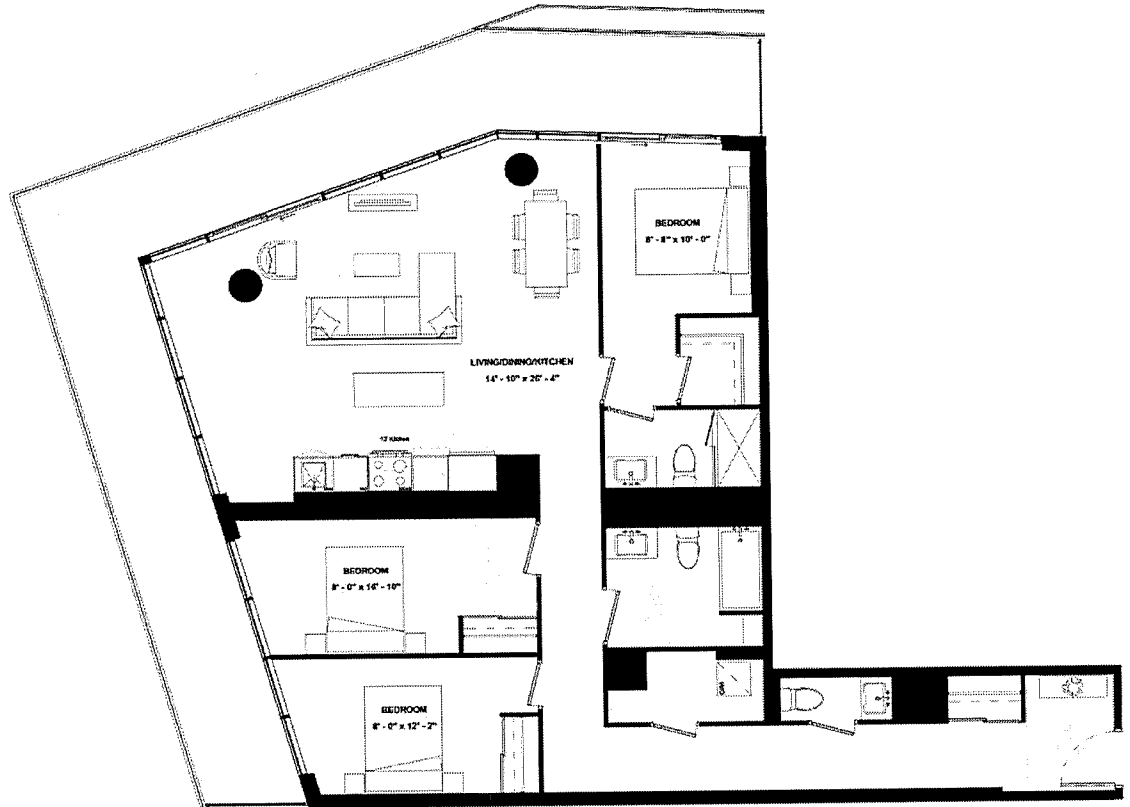
A3B(BF)-1371

SUITE TYPE: 3B (BF)(GUG)
SUITE AREA: 1371 SQFT
BALCONY/TERRACE: 423 SQFT



HARHAY
DEVELOPMENTS

SUITE 2102



ISSUE DATE: 2023/05/05