

# The Florence

**BEDROOM(S):**  
1 + DEN

**BATHROOM(S):**  
1

**INTERIOR:**  
662 – 676 SQ. FT.

**EXTERIOR:**  
64 SQ. FT.

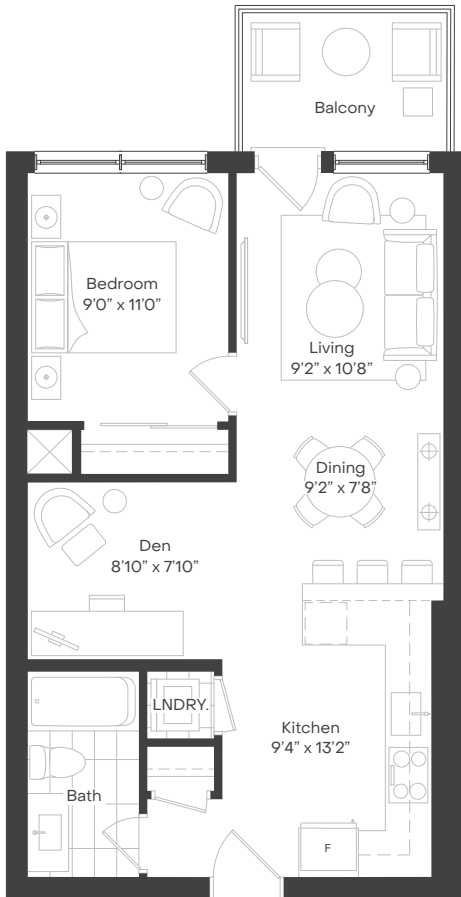
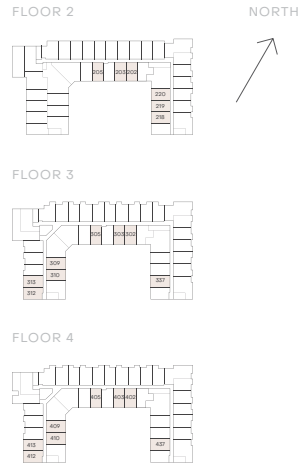
**CEILING HEIGHTS:**  
9' 9" (ALL SUITES)

Starting from

Was:  
**\$885,990**  
**\$1,338 psf**

Now:  
**\$786,848**  
**\$1,189 psf**

Difference:  
**\$150 psf**



# The Westwood

**BEDROOM(S):**  
1 + DEN

**BATHROOM(S):**  
1

**INTERIOR:**  
655 SQ. FT.

**EXTERIOR:**  
64 SQ. FT.

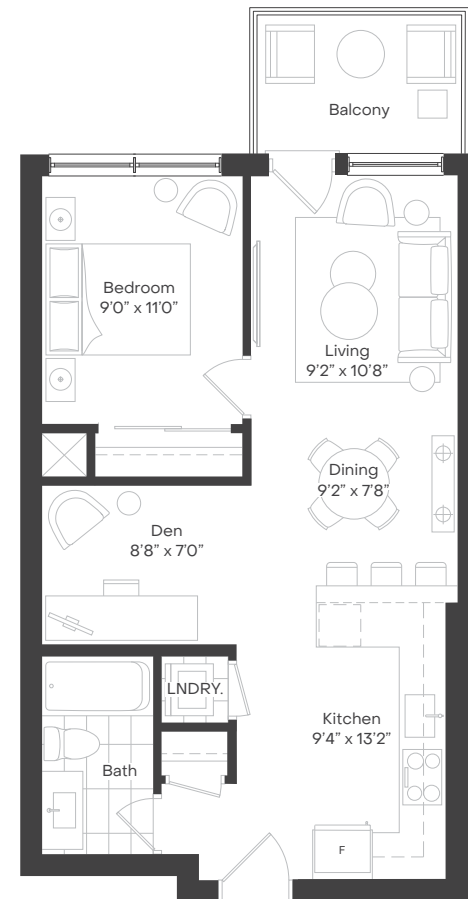
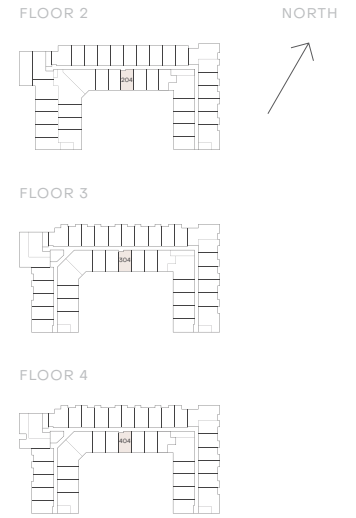
**CEILING HEIGHTS:**  
9' 9" (ALL SUITES)

Starting from

Was:  
**\$891,990**  
**\$1,360 psf**

Now:  
**\$792,256**  
**\$1,210 psf**

Difference:  
**\$152 psf**



# The Anderson

**BEDROOM(S):**  
1 + DEN

**BATHROOM(S):**  
1

**INTERIOR:**  
662 – 701 SQ. FT.

**EXTERIOR:**  
64 SQ. FT.

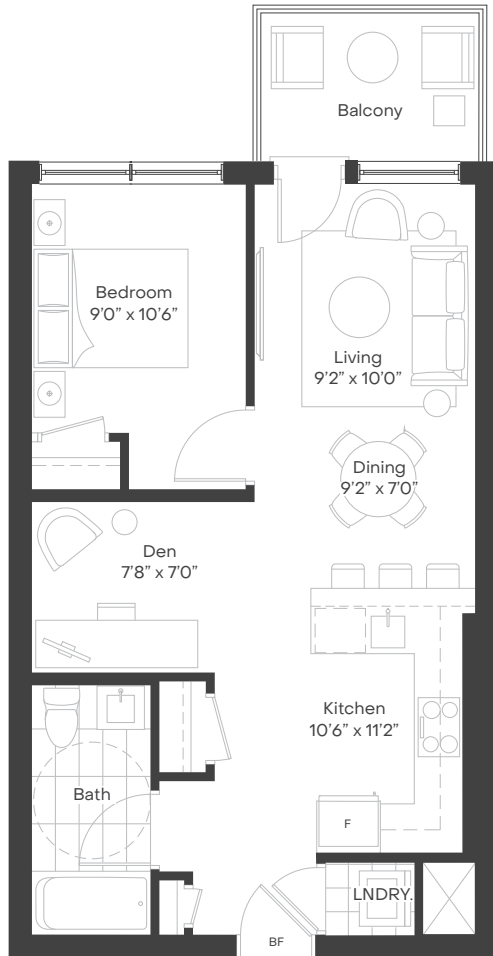
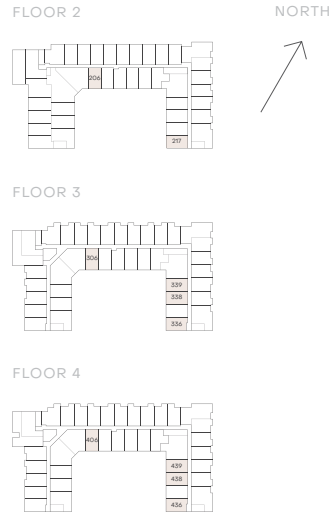
**CEILING HEIGHTS:**  
9' 9" (ALL SUITES)

Starting from

Was:  
**\$892,990**  
**\$1,347 psf**

Now:  
**\$793,990**  
**\$1,198 psf**

Difference:  
**\$151 psf**



# The Kerr

**BEDROOM(S):**  
1 + DEN

**BATHROOM(S):**  
1

**INTERIOR:**  
651 – 656 SQ. FT.

**EXTERIOR:**  
38 – 47 SQ. FT.

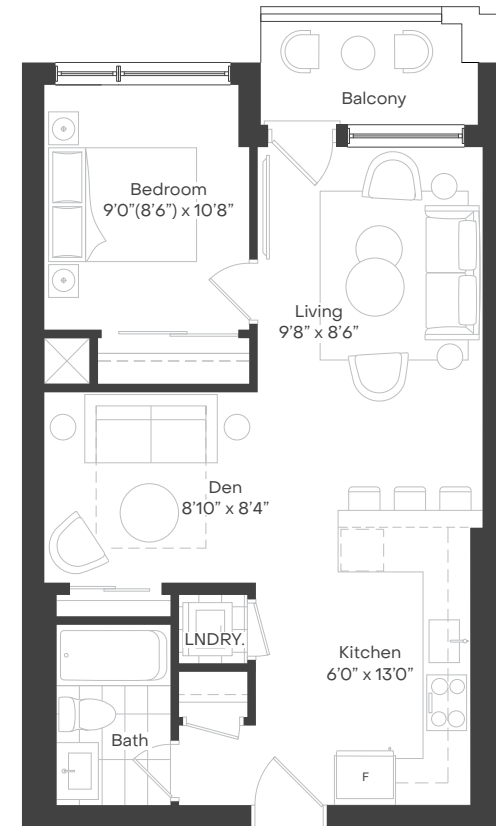
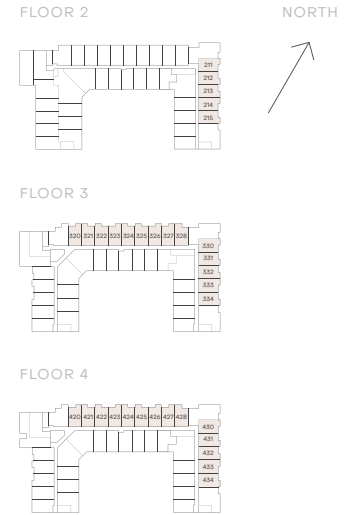
**CEILING HEIGHTS:**  
9' 9" (ALL SUITES)

Starting from

Was:  
**\$862,990**  
**\$1,325 psf**

Now:  
**\$766,380**  
**\$1,177 psf**

Difference:  
**\$148 psf**



# The Burnet

**Starting from**

**BEDROOM(S):**  
1 + DEN

**BATHROOM(S):**  
1

**INTERIOR:**  
636 – 650 SQ. FT.

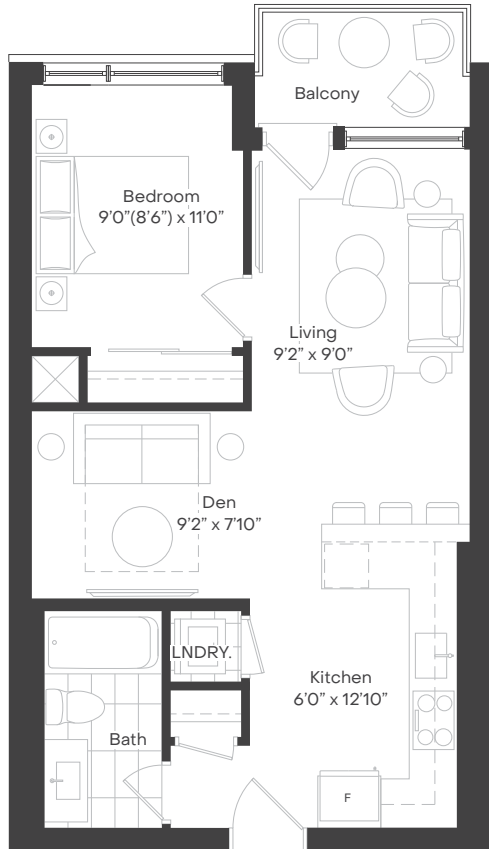
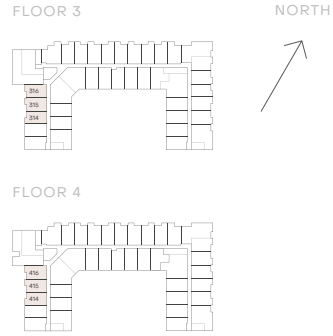
**EXTERIOR:**  
45 – 47 SQ. FT.

**CEILING HEIGHTS:**  
9' 9" (ALL SUITES)

**Was:**  
\$856,990  
\$1,347 psf

**Now:**  
\$761,121  
\$1,196 psf

**Difference:**  
\$151 psf



# The Ortona

**Starting from**

**BEDROOM(S):**  
1

**BATHROOM(S):**  
1

**INTERIOR:**  
715 SQ. FT.

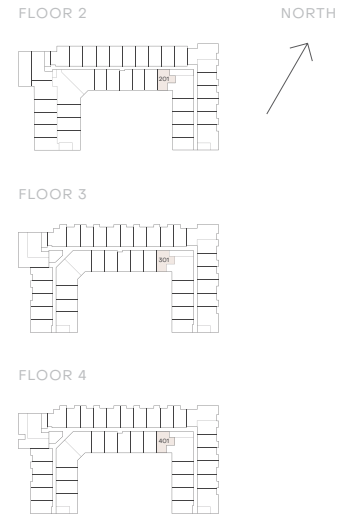
**EXTERIOR:**  
64 SQ. FT.

**CEILING HEIGHTS:**  
9' 9" (ALL SUITES)

**Was:**  
\$872,990  
\$1,221 psf

**Now:**  
\$774,890  
\$1,084 psf

**Difference:**  
\$137 psf



Floor plans, materials and specifications are subject to change without notice. All dimensions and square footage are approximate. Actual usable floor space may vary from stated floor area. Models may be built as a mirror image. Optional floorplan premiums apply. Renderings are artist concept. E. & O. E.

Floor plans, materials and specifications are subject to change without notice. All dimensions and square footage are approximate. Actual usable floor space may vary from stated floor area. Models may be built as a mirror image. Optional floorplan premiums apply. Renderings are artist concept. E. & O. E.

# Dare to Compare

	SOUTH OAKVILLE PROJECTS		NORTH OAKVILLE PROJECTS	
	 <b>The Deane</b> <small>SOUTH OAKVILLE</small>	 <small>BRONTE LAKESIDE</small>	 <small>CORNER OF LAKESHORE</small>	 <small>THE GREENWICH</small> <small>CONDOS AT OAKVILLE</small>
<b>Builder</b>	<b>Rise Developments</b>	Alliance United	Minto Communities	Branthaven
<b>Location</b>	<b>South Oakville - Kerr Village</b>	South Oakville - Bronte	North Oakville	North Oakville
<b>Building Type</b>	<b>Boutique</b>	Mid Rise	Hi Rise	Hi Rise
<b>Unit Count</b>	<b>126</b>	206	239	349
<b>Price vs. Sq.Ft. — 1 Bed + D</b>	<b>\$767,266 / 652 Sq.Ft / \$1,176 psf</b>	\$904,900 / 675 Sq.Ft / \$1,341 psf	\$779,900 / 649 Sq.Ft. / \$1,202 psf	\$840,900 / 685 Sq.Ft. / \$1,228 psf
<b>Price vs. Sq.Ft. — 2 Bed</b>	<b>\$1,121,260 / 913 Sq.Ft. / \$1,228 psf</b>	\$1,322,900 / 884 Sq.Ft / \$1,496 psf	\$1,019,900 / 918 Sq.Ft. / \$1,111 psf	\$1,094,900 / 915 Sq.Ft. / \$1,197 psf
<b>Parking</b>				
<b>2 Bed Suites and Larger</b>	<b>INCLUDED!</b>	\$50,000 (limited availability)	Included	Included (value \$40,000)
<b>1 Bed Suites</b>	<b>\$25,000</b>	\$50,000 (limited availability)	Included	Included (value \$40,000)
<b>Standard Ceiling Height</b>	<b>9'9"</b>	9'	9'	9'
<b>Ground Floor</b>	<b>14'1"</b>	X	X	10'
<b>Townhomes</b>	<b>11'10"</b>	X	X	X
<b>Deposit</b>	<b>10% TOTAL!</b>	20%	20%	10%
<b>Price Credit</b>	<b>10% on 1B+D   5% on 2B &amp; Larger</b>	X	X	up to \$10,000
<b>Maintenance Fees</b>	<b>FREE (for 1 Year, \$0.55 onwards)</b>	\$0.64	\$0.65	\$0.61
<b>Property Tax</b>	<b>FREE (for 1 year)</b>	Town of Oakville Rate 1%	Town of Oakville Rate 1%	Town of Oakville Rate 1%
<b>Decor Bonus</b>				
<b>Condo Units</b>	<b>\$15,000</b>	X	X	X
<b>Townhomes</b>	<b>\$20,000</b>	X	X	X
<b>Occupancy</b>	<b>January 2025</b>	June 2026	Fall 2025	March 2025

Exclusive Listing Brokerage. In2ition Realty Inc. Brokers Protected. Prices and specifications are subject to change without notice. All illustrations are artist's concept. E. & O.E. Starting from price reflects calculated incentives values, which are subject to change at any time and shown as credit on closing. Incentives are a special limited time offer and may be withdrawn at anytime without notice, and are non transferrable, assignable, or redeemable for cash.



# Dare to Compare

## North Oakville

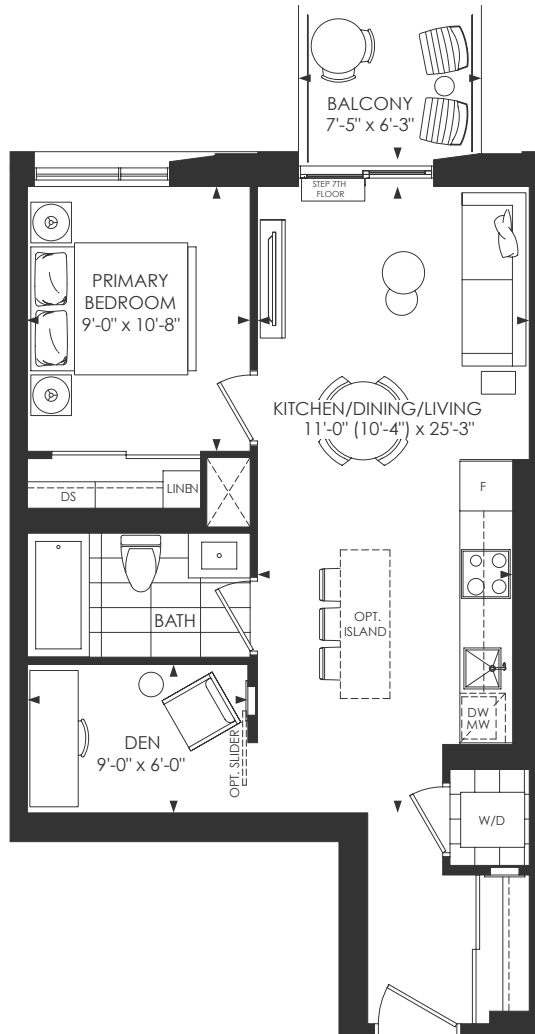
Price: \$779,900

PSF: \$1,202

Size: 649 SqFt

Ceiling Height: 9'

Maintenance: \$421.85



## The Deane The Kerr

Was:

\$862,990 / \$1,325 psf

**New Price: \$766,380**

**New PSF: \$1,177**

Size: 651 sqft

Ceiling Height: 10'

Maintenance: \$358.95

