

Design	View	Description	Starting Floor	Approx. Suite Size (sf)*	Starting Price*	Maintenance Fee**	Property Tax***
Courtyard Collection							
1C	E	1 Bedroom with 1 Bathroom	3rd	603	\$792,000	\$416	\$548
1B+DA	E	1 Bedroom plus Den with 1 Bathroom	3rd	599	\$787,000	\$413	\$544
2B	S	2 Bedrooms with 2 Bathrooms	3rd	900	\$1,185,000	\$621	\$819
City Collection							
1QR	N	1 Bedroom with 1 Bathroom	3rd	489	\$660,000	\$337	\$456
2K	N	2 Bedrooms with 2 Bathrooms	12th	1,010	\$1,245,000	\$697	\$861
2Q+DB	N	2 Bedrooms with 2.5 Bathrooms	5th	1,201	\$1,410,000	\$829	\$975
Shoreline Collection							
2U	W	2 Bedrooms with 2 Bathrooms	9th	879	\$1,245,000	\$607	\$861
2EE+D	W	2 Bedrooms plus Den with 2 Bathrooms	3rd	1,064	\$1,495,000	\$734	\$1,034
3E	W	3 Bedrooms with 2.5 Bathrooms	8th only	1,480	\$1,995,000	\$1,021	\$1,379
3B	NW	3 Bedrooms with 3 Bathrooms	11th	1,607	\$2,270,000	\$1,109	\$1,570

DEPOSIT STRUCTURE

- 5% due on signing
- 5% due 120 days after signing
- 5% due 365 days after signing
- 5% due 450 days after signing

TENTATIVE OCCUPANCY DATE Summer 2028

MAINTENANCE FEE Approximately \$0.69** per square feet

METERING Suites are individually metered for electricity, heating, cooling, hot & cold water

PARKING Available for purchase at \$60,000* each

PRESENTATION CENTRE

Lakeview Village Discovery Centre
985 Hydro Road
Mississauga, ON, L5E0A8
Phone: 416.386.4631
Email: lakeview@tridel.com

OFFICE HOURS

Monday to Thursday: 11 AM to 7 PM
Friday: Closed
Weekends and Holidays: 12 PM to 5 PM

SALES TEAM

Anita Zaman
Broker, Sales Manager
Del Realty Inc., Brokerage
azaman@tridel.com

Ashley Tsoi
Senior Sales Representative
Del Realty Inc., Brokerage
atsoi@tridel.com

Vanessa Pomante
Broker
Del Realty Inc., Brokerage
vpomante@tridel.com

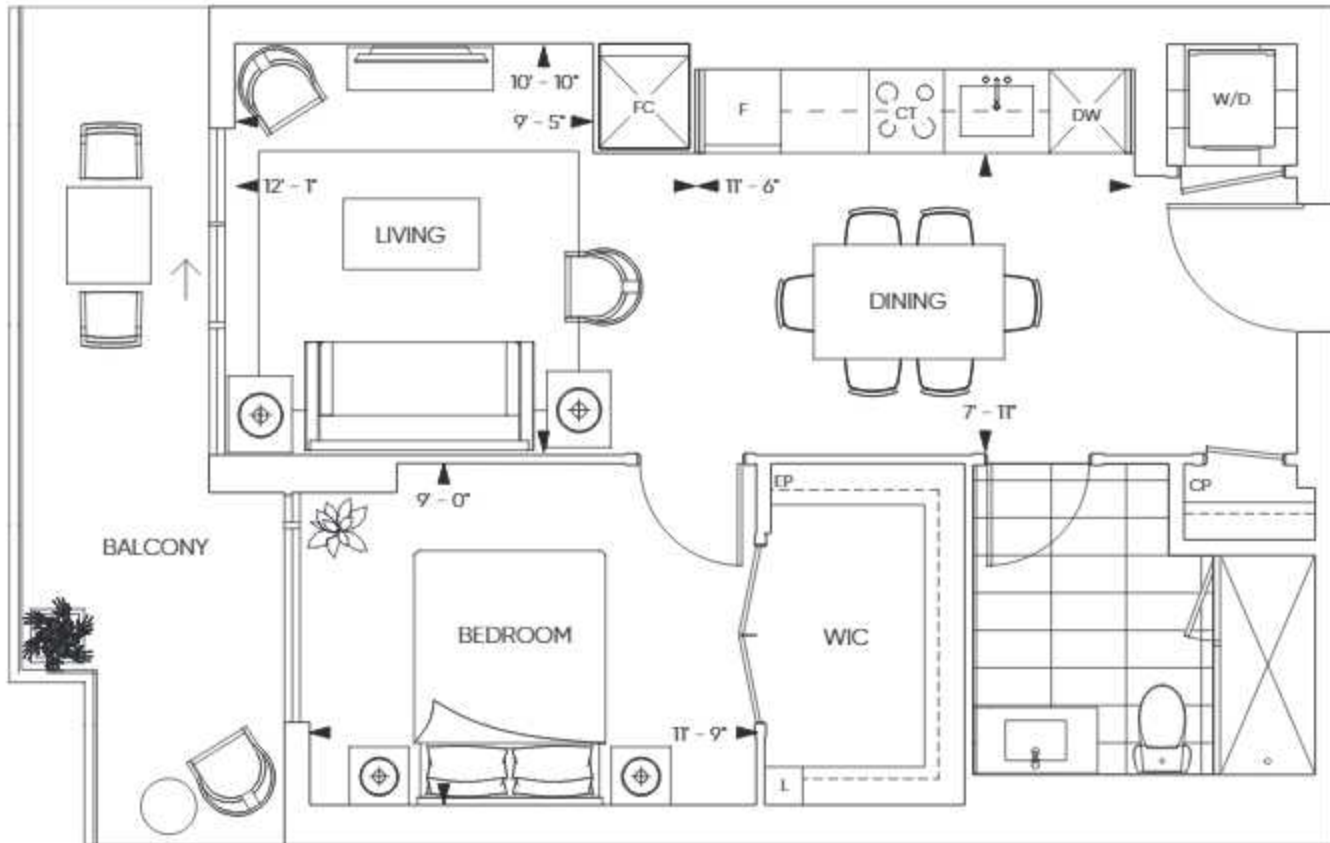
* Prices and Specifications subject to change without notice, E. & O.E., June 1, 2023

** Excludes parking maintenance and \$40 plus HST Rogers monthly internet service

*** Based on 2023 Property Tax Rates by the City of Mississauga. Estimated property tax amounts are monthly and subject to change without notice.

Dimensions may exceed the useable floor area. Sizes and specifications subject to change without notice, and the Vendor shall have no liability for any resulting variance(s) between the actual final area(s) thereof and the stated area(s) outlined above. Façade variations may apply, contact a sales representative for further details. E. & O.E. Tridel®, Tridel Built for Life® and Tridel Built Green Built for Life® are registered trademarks of Tridel and used under license. ©Tridel 2022. All rights reserved. September 2022

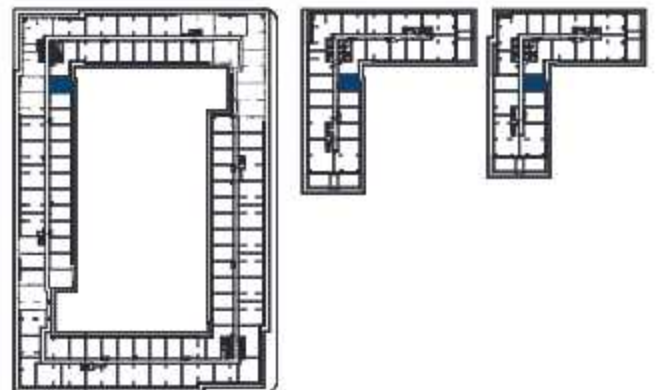
HARBOURWALK



FLOORS 3-12

FLOOR 13

FLOOR 14

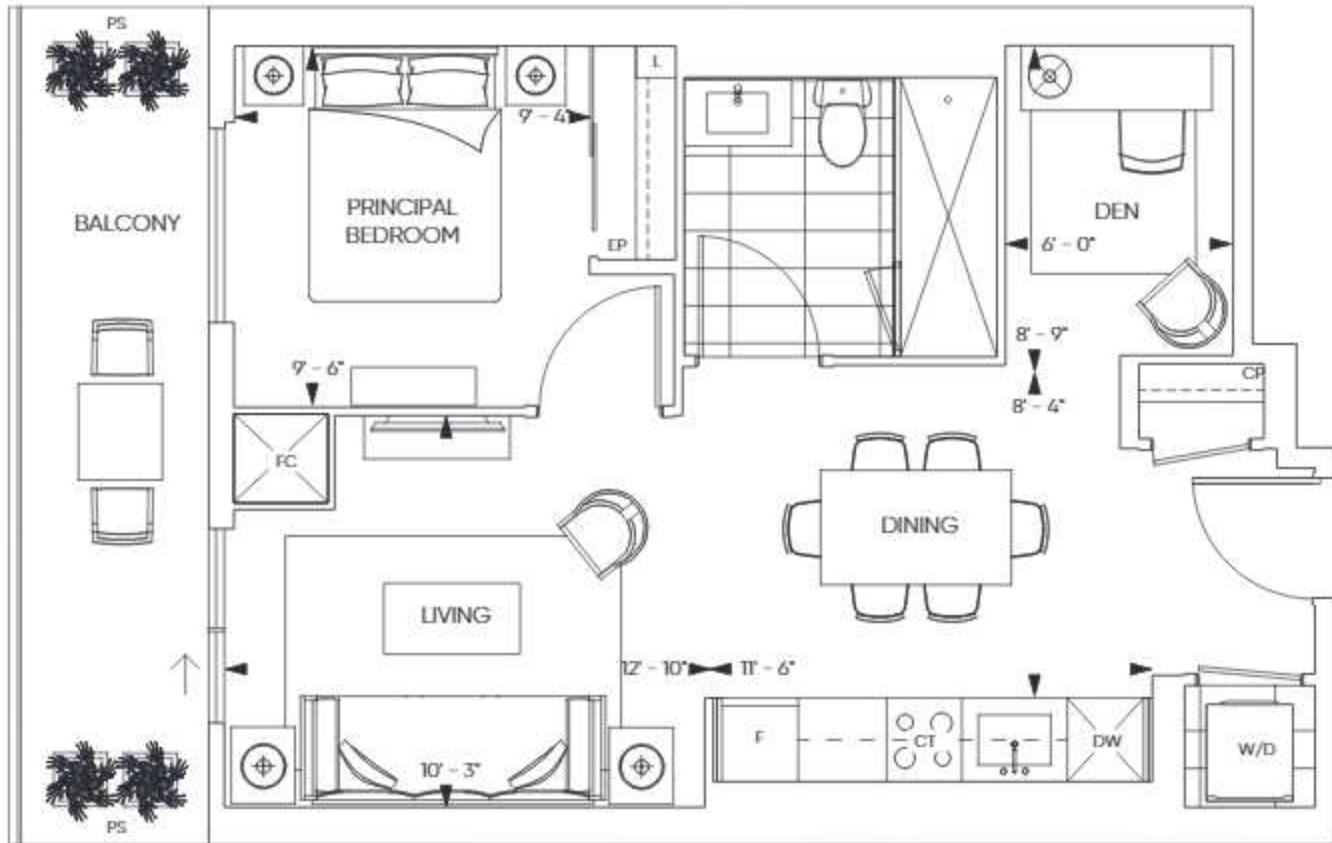


1C

603 SQ.FT.
1 BEDROOM, 1 BATHROOM
EAST FACING

© 2023 Fidelity Investments. All rights reserved. Fidelity Investments and Fidelity are trademarks of Fidelity Investments. Project names and logos are trademarks of their respective owners. All rights reserved. Buildings and views not to scale. All dimensions are approximate and subject to normal construction variances. Dimensions may exceed the usable floor area. Sizes and specifications subject to change without notice. Actual usable floor space may vary from the stated floor area. Furniture is displayed for illustration purposes only and does not necessarily reflect the detailed plan for the suite. Suites are sold unfinished. Balcony, terrace and facade variations may apply. Contact a sales representative for further details. Illustrations are artist's concept only. Prices and specifications subject to change without notice. F-631 - March 2023

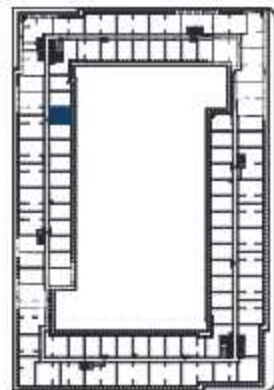
HARBOURWALK



FLOORS 3-12

FLOOR 13

FLOOR 14

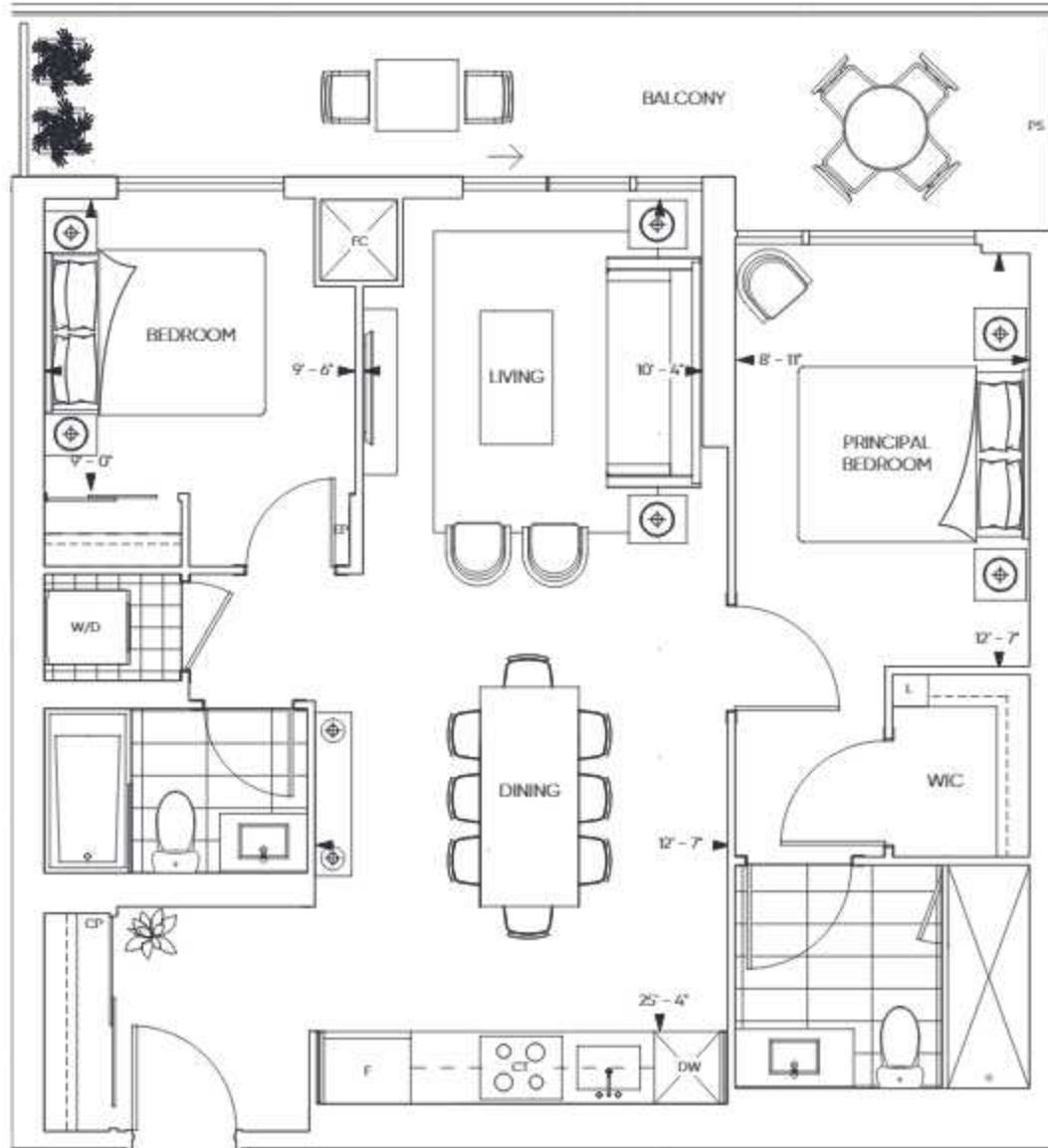


1B+DA

599 SQ.FT.
1 BEDROOM + DEN,
1 BATHROOM
EAST FACING

© 2023 F&S. *F&S is a registered trademark of F&S. All rights reserved. F&S is a registered trademark of F&S. All rights reserved. All dimensions are approximate and subject to normal construction variances. Dimensions may exceed the usable floor area. Sizes and specifications subject to change without notice. Actual usable floor space may vary from the stated floor area. Furniture is displayed for illustration purposes only and does not necessarily reflect the detailed plan for the suite. Suites are sold unfurnished. Balcony, terrace and facade variations may apply, contact a sales representative for further details. Illustrations are artist's concept only. Prices and specifications subject to change without notice. F&S - March 2023.

HARBOURWALK

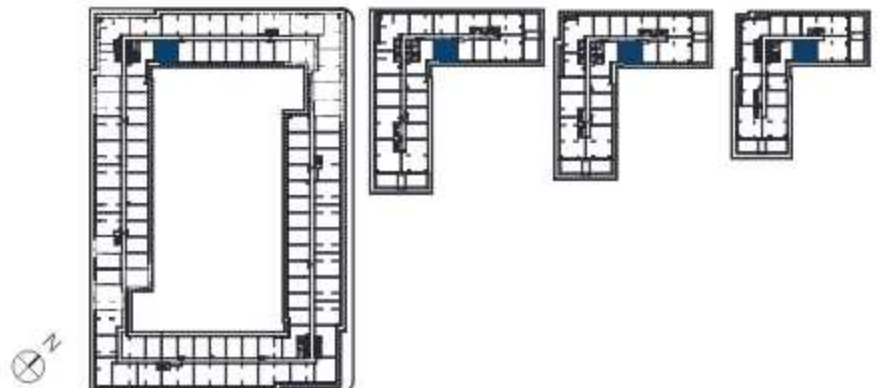


FLOORS 3-12

FLOOR 13

FLOOR 14

FLOOR 15

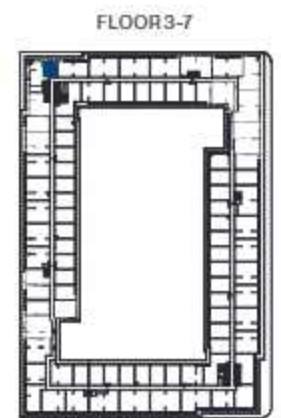
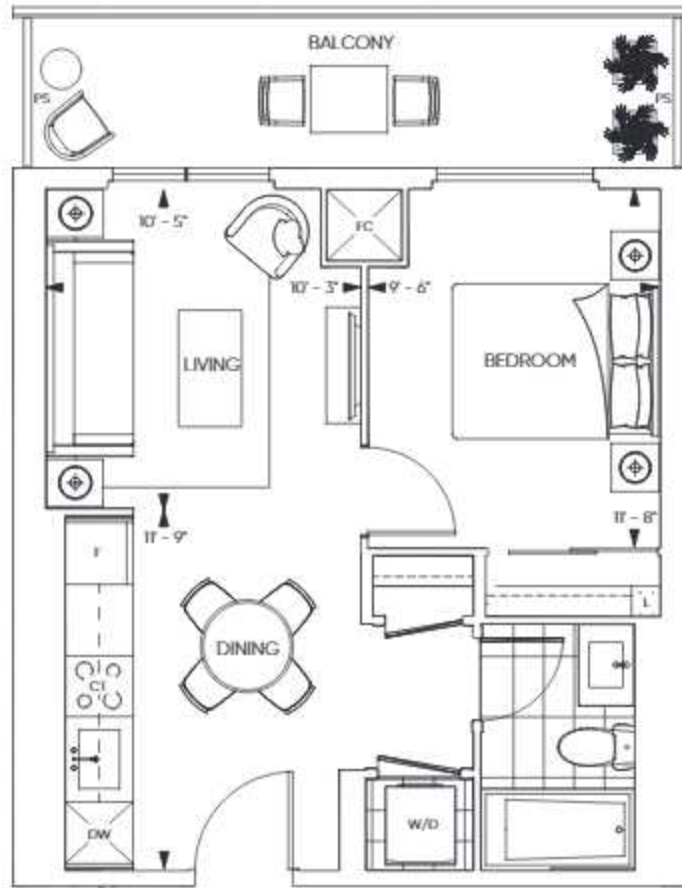


2B

900 SQ.FT.
2 BEDROOM, 2 BATHROOM
SOUTH FACING

© 2023 F&S. *F&S is a registered trademark of F&S Design Group, Inc. All rights reserved. Building and views not in scale. All dimensions are approximate and subject to normal construction variances. Dimensions may exceed the usable floor area. Sizes and specifications subject to change without notice. Actual usable floor space may vary from the stated floor area. Furniture is displayed for illustration purposes only and does not necessarily reflect the detailed plan for the suite. Sales are sold as-is. Balcony, interior and facade variations may apply, contact a sales representative for further details. Illustrations are artist's concept only. Prices and specifications subject to change without notice. F&S - March 2023.

HARBOURWALK

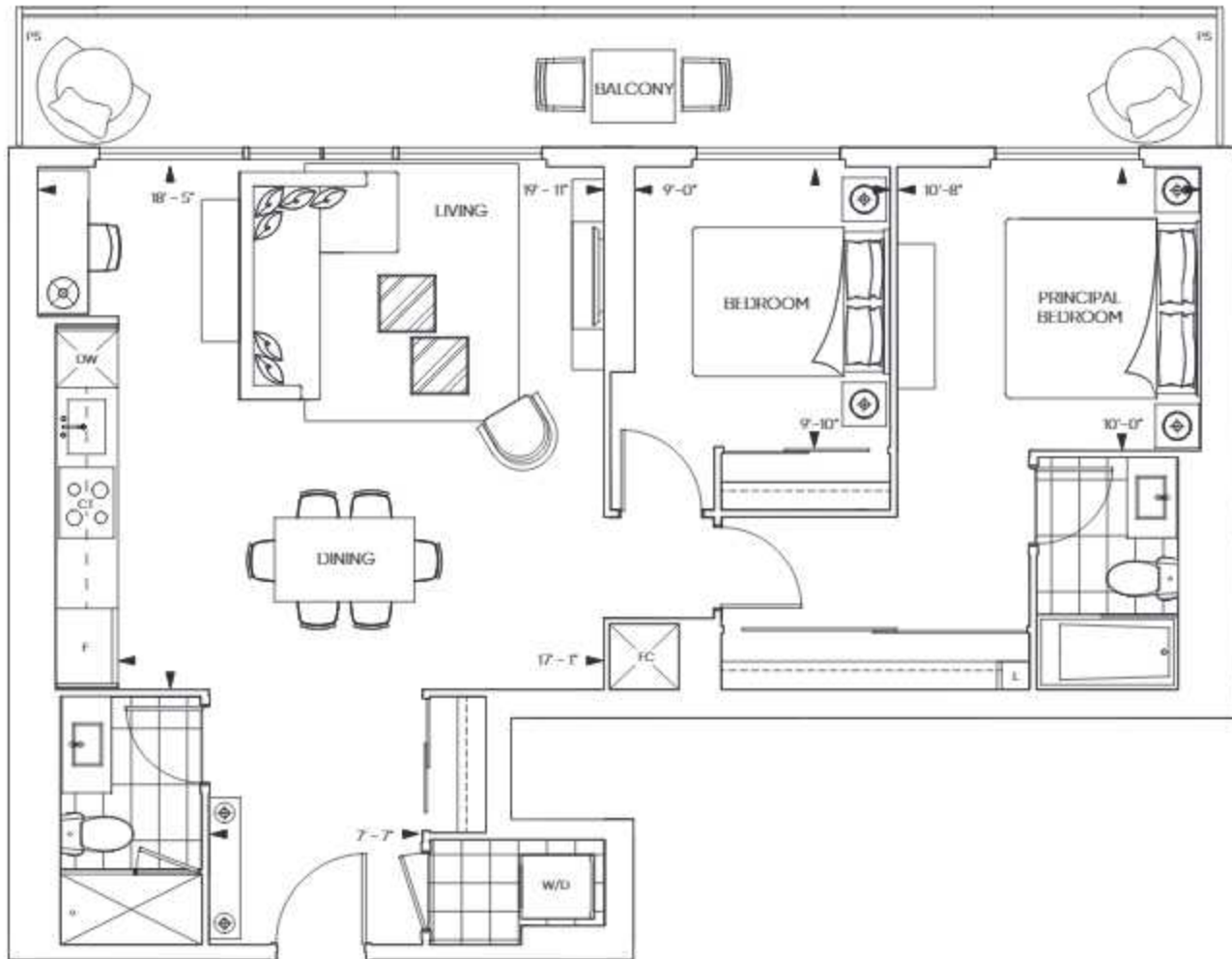


1QR(1)

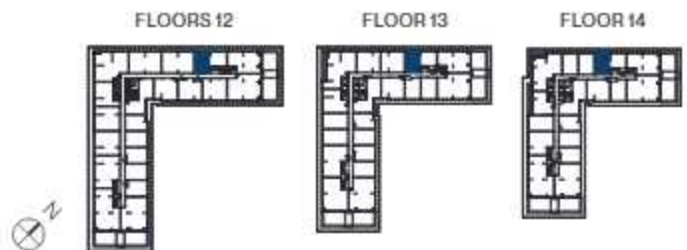
489 SQ.FT.
1 BEDROOM, 1 BATHROOM
NORTH FACING

© 2023 Fiddi. *Fiddi, "F" design, Fiddi Hall for File and Fiddi Hall for File Design are registered trademarks of Fiddi Corporation. Project names and logos are trademarks of their respective owners. All rights reserved. Buildings and views not in scale. All dimensions are approximate and subject to normal construction variances. Dimensions may exceed the usable floor area. Sizes and specifications subject to change without notice. Actual usable floor space may vary from the stated floor area. Furniture is displayed for illustration purposes only and does not necessarily reflect the detailed plan for the suite. Suites are sold unfurnished. Balcony, terrace and facade variations may apply, contact a sales representative for further details. Illustrations are artist's concept only. Prices and specifications subject to change without notice. F.A.C.I. - March 2023.

HARBOURWALK

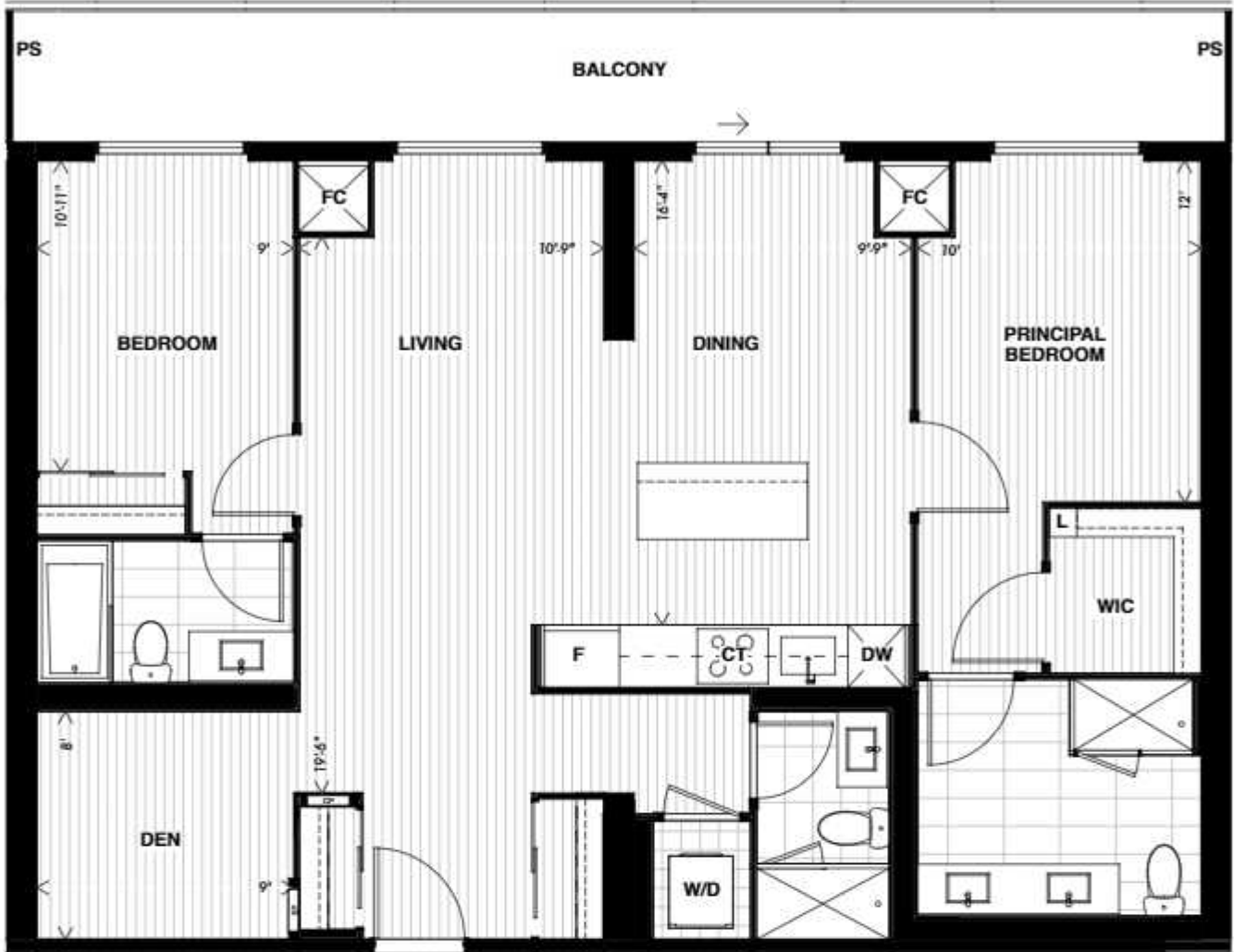


2K 1010 SQ.FT.
2 BEDROOMS, 2 BATHROOMS
NORTH FACING



© 2018 2019. *1483, 17 design, Harbourwalk 1 & 2 and Harbourwalk 1 & 2 Design are registered trademarks of Trizec Corporation. Project names and logos are trademarks of their respective owners. All rights reserved. Holdings and views, not to scale. All dimensions are approximate and subject to normal construction variances. Dimensions may exceed the usable floor area. Sizes and specifications subject to change without notice. Actual usable floor space may vary from the stated floor area. Furniture is displayed for illustrative purposes only and does not necessarily reflect the electrical plan for the suite. Tables are not included. Flooring, fixtures and layout variations may apply. Contact a sales representative for further details. Reservations are artist's concept only. Plans and specifications subject to change without notice. 1-ACF, April 2021

Schedule C1



This floor plan is a designated accessible suite, requiring specific dimensions for critical paths of travel

FLOOR 3, 5, 8 - 9

31, 32, 33

2Q+DB

Purchaser Acknowledgement

Date

Municipal Number:

LEGEND

- CP - COMMUNICATION PANEL
- EP - ELECTRICAL PANEL
- SP - SMART PANEL
- FC - FAN COIL
- F - FRIDGE
- DW - DISHWASHER
- CT - COOKTOP
- W/D - WASHER / DRYER
- P - PANTRY
- WIC - WALK IN CLOSET
- L - LINEN
- PS - PRIVACY SCREEN

Materials, specifications, floor plans and dimensions are subject to change without notice. Window sizes and type may vary. Actual useable floor space may vary from the stated floor area. The direction of plank flooring, tiles, and pavers indicated on blackline represents the type of material for the area and does not necessarily reflect the method or direction of the installation, which is subject to change based on general industry standard. Landscaping, patio and balcony areas subject to change E. & O.E.. Floor numbers as indicated are representing municipal floor numbers, not legal floor numbers.

TRIDEL®



Schedule C1



FLOOR 7 -12

27

2U

Purchaser Acknowledgement _____ Date _____

Municipal Number: _____

LEGEND

- CP - COMMUNICATION PANEL
- EP - ELECTRICAL PANEL
- SP - SMART PANEL
- FC - FAN COIL
- F - FRIDGE
- DW - DISHWASHER
- CT - COOKTOP
- W/D - WASHER / DRYER
- P - PANTRY
- WIC - WALK IN CLOSET
- L - LINEN
- PS - PRIVACY SCREEN

Materials, specifications, floor plans and dimensions are subject to change without notice. Window sizes and type may vary. Actual useable floor space may vary from the stated floor area. The direction of plank flooring, tiles, and pavers indicated on blackline represents the type of material for the area and does not necessarily reflect the method or direction of the installation, which is subject to change based on general industry standard. Landscaping, patio and balcony areas subject to change E. & O.E.. Floor numbers as indicated are representing municipal floor numbers, not legal floor numbers.

TRIDEL®



Schedule C1



FLOOR 8

19

3E

Purchaser Acknowledgement _____

Date _____

Municipal Number:

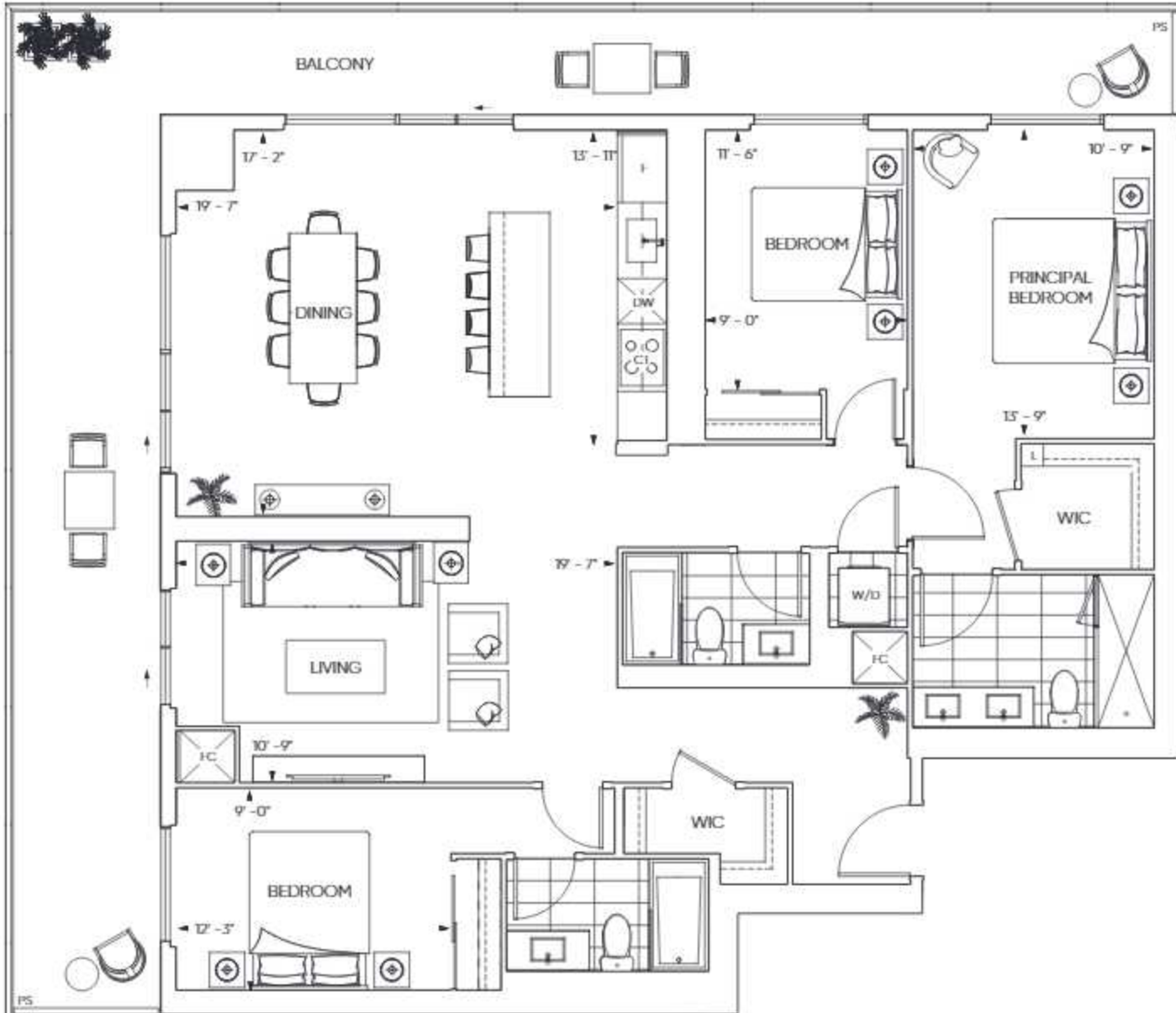
LEGEND

- CP - COMMUNICATION PANEL
- EP - ELECTRICAL PANEL
- SP - SMART PANEL
- FC - FAN COIL
- F - FRIDGE
- DW - DISHWASHER
- CT - COOKTOP
- W/D - WASHER / DRYER
- P - PANTRY
- WIC - WALK IN CLOSET
- L - LINEN
- PS - PRIVACY SCREEN

Materials, specifications, floor plans and dimensions are subject to change without notice. Window sizes and type may vary. Actual useable floor space may vary from the stated floor area. The direction of plank flooring, tiles, and pavers indicated on blackline represents the type of material for the area and does not necessarily reflect the method or direction of the installation, which is subject to change based on general industry standard. Landscaping, patio and balcony areas subject to change E. & O.E.. Floor numbers as indicated are representing municipal floor numbers, not legal floor numbers.

TRIDEL®

HARBOURWALK



3B

1607 SQ.FT.
3 BEDROOMS, 3 BATHROOMS
SOUTHEAST FACING

FLOOR 11

