

# TRADITIONS

OF COUNTRY LANE

---

## Portfolio of Homes

Style and substance in perfect balance

With your Heathwood Home you can be assured of the highest levels of quality and outstanding craftsmanship.

Traditions of Country Lane features a wide selection of architectural elevations - luxurious new home residences that bring the perfect blend of clean, classic lines and contemporary flair.

These are homes of distinction - a place for you and your loved ones to create treasured memories that will last a lifetime.

---

# HEATHWOOD



# TRADITIONS

OF COUNTRY LANE

## EXQUISITE EXTERIOR DETAIL



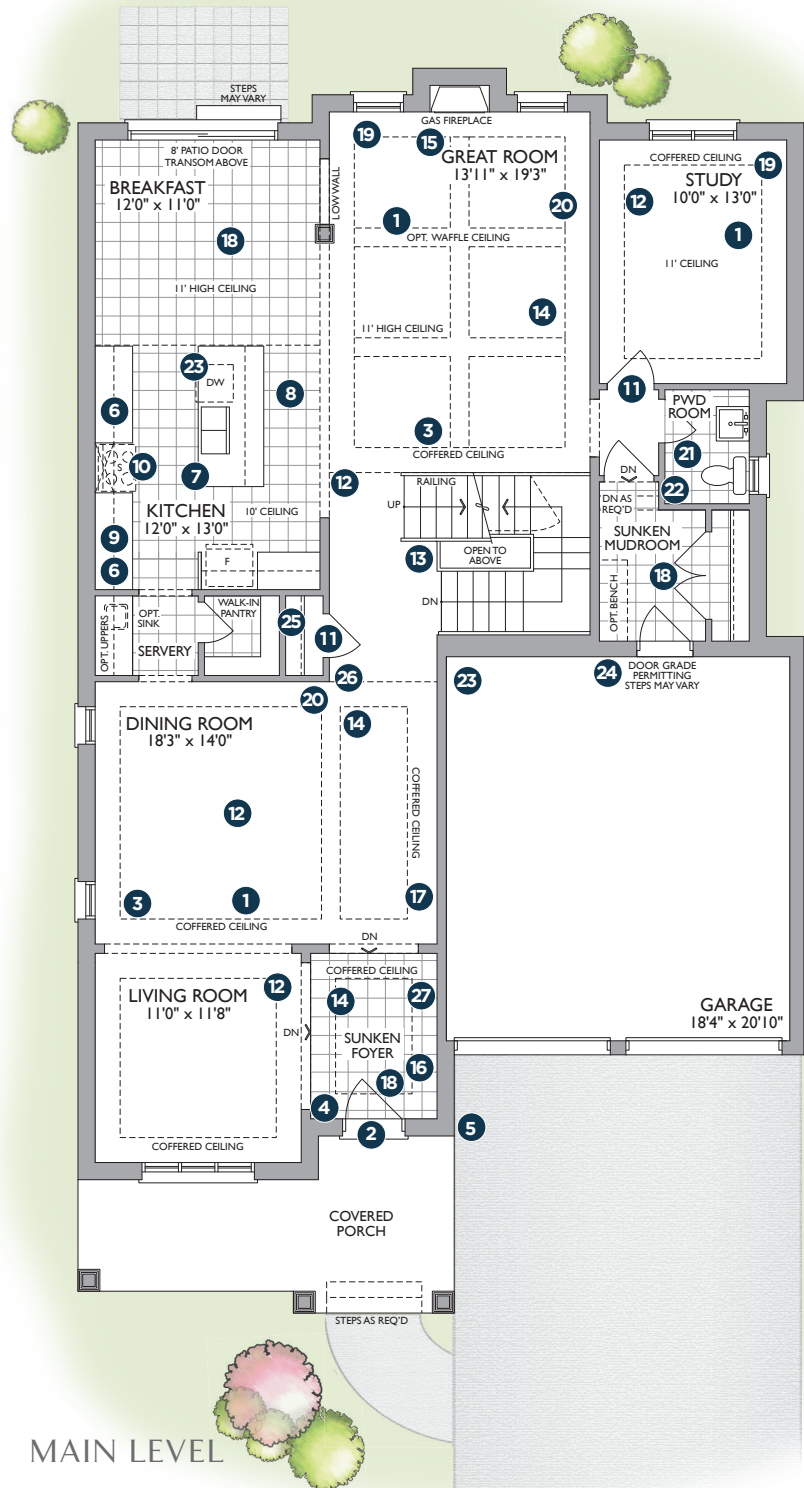
- ① Classic brick and stone façade with exquisite stone detailing
- ② 8' Fiberglass front door with luxurious passage set
- ③ Maintenance free, Low E argon-filled vinyl casement windows
- ④ Articulated fiberglass shingles with manufacturer's lifetime limited warranty
- ⑤ Green Home Wall System - insulated to R27
- ⑥ R60 Attic insulation - to keep you warm and save you money
- ⑦ Fully insulated sectional garage doors
- ⑧ Soffit lighting
- ⑨ Landscaping package

# The Classic Collection

A REFLECTION OF YOUR IMPECCABLE TASTE AND STYLE

## MAIN LEVEL ATTRIBUTES

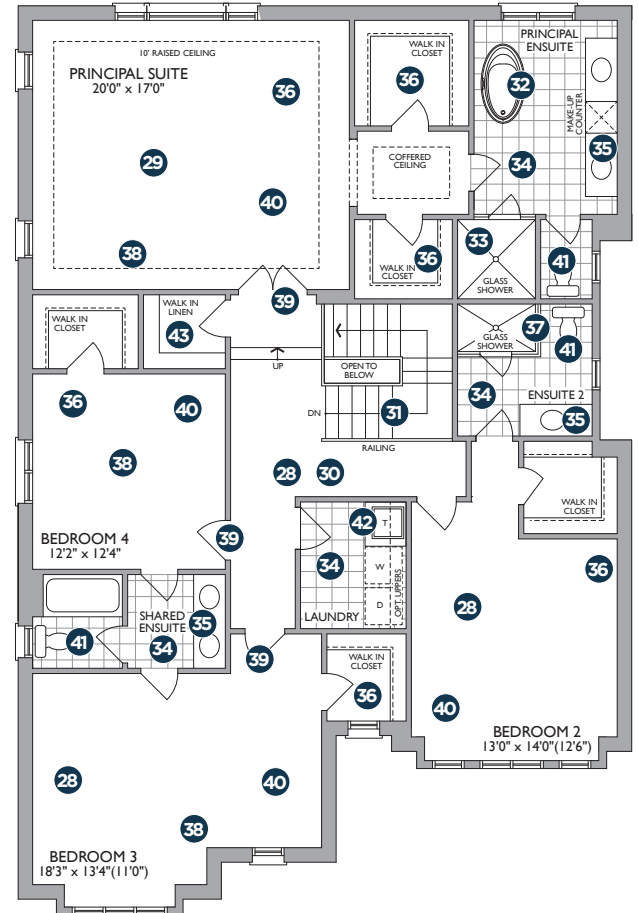
- 1 10' - 11' Ceilings on Main Level\*
- 2 Stunning 8' high front door
- 3 Smooth ceilings throughout Main Level
- 4 Video door bell (SH)\*\*, Smart Door Lock (SH)\*\*
- 5 One outdoor video camera (SH)\*\*
- 6 Upgraded custom designed kitchen cabinetry with extra height uppers and crown moulding. Includes top drawers, deep upper over fridge and soft closing doors and drawers\*
- 7 Luxurious stone countertops with 1 1/2" built up square edge and undermount stainless steel sink with upgraded faucet
- 8 Extra large island with extended breakfast counter\*
- 9 Ceramic Kitchen backsplash
- 10 Stainless steel range hood
- 11 8" "Safe and Sound" interior doors on Main Level (excluding garage entrance door, and stair landings)
- 12 5" Sculpted engineered Oak flooring throughout Main Level (except tiled areas)
- 13 Stained oak stairs with matching handrail and oak nosing in choice of stain with metal pickets
- 14 Choice of location for 20 - 4" LED potlights on Main or Lower Level
- 15 Direct vent gas fireplace with painted wood mantle and marble surround
- 16 Two 2-wave smart light switches to control outdoor lights and front hallway lights (SH)\*\*
- 17 Smart thermostat (SH)\*\*
- 18 Luxurious imported ceramic tile flooring in Kitchen, Breakfast Room, Powder Room, Foyer, Laundry Room, and Mudroom\*
- 19 Big bright windows
- 20 5 1/4" baseboard and 3" integrated backband casing
- 21 Unique Powder Room pedestal sinks
- 22 Water saving high volume toilets
- 23 Central Vac to garage with under cabinet Kitchen crumb vacuum
- 24 Two Garage door openers (SH)\*\*
- 25 Automatic light in Foyer closet (SH)\*\*
- 26 Home hub (SH)\*\*
- 27 Smart Home Security System (SH)\*\* (monitoring not included)



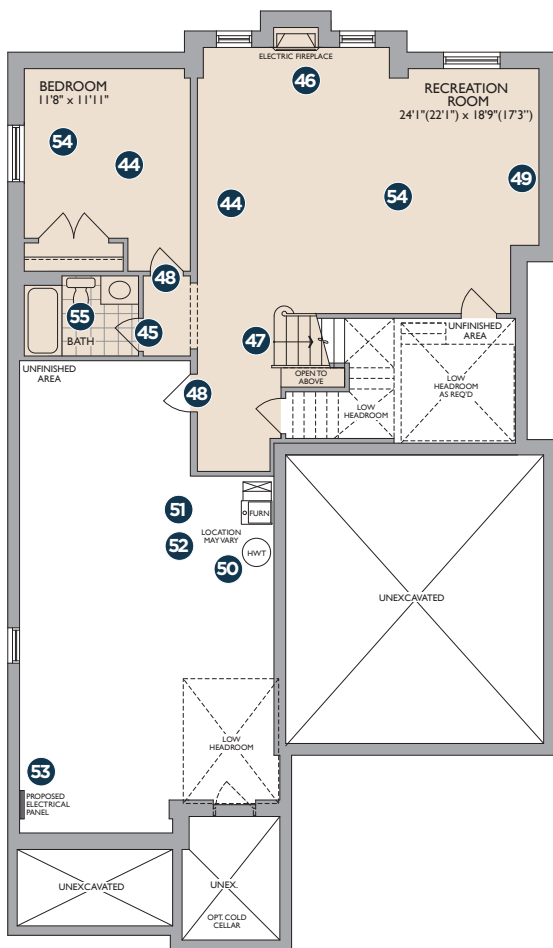


## SECOND LEVEL FEATURES

- 28** 9' ceilings throughout Second Level
- 29** 10' raised ceilings in Principal Suite\*
- 30** 5" Sculpted engineered Oak flooring in Upper Hallway
- 31** Stained oak stairs with matching handrails and oak nosing in a choice of stain with metal pickets to Main Level
- 32** Luxurious freestanding soaker tub in the Principal Ensuite\*
- 33** Principal Ensuite features frameless glass shower enclosures with door
- 34** Luxurious imported ceramic tile flooring in all Ensuites\* and Laundry Room\*
- 35** All Ensuites feature upgraded vanity cabinetry
- 36** Big and bright Bedrooms with lots of closet space
- 37** Chrome framed enclosure glass shower in all Bathrooms with separate shower
- 38** 5 1/4" baseboard and 3" integrated backband casing
- 39** 8' "Safe and Sound" interior doors on Second Level
- 40** Luxury 40oz broadloom in all Bedrooms
- 41** Water saving high volume toilets
- 42** Laundry tub in base cabinet
- 43** Conveniently located linen closets\*



SECOND LEVEL



LOWER LEVEL

## LOWER LEVEL HIGHLIGHTS

- 44** Fully finished Lower Level with 9' ceiling\* \*\*
- 45** Conveniently located 3 piece bathroom
- 46** Electric fireplace with painted mantle in Recreation Room
- 47** Stained oak stairs with matching handrails and metal pickets to main floor
- 48** 6' 8" "Safe and Sound" interior doors
- 49** 5 1/4" baseboard and 3" integrated backband casing
- 50** 96% High Efficiency furnace with ECM motor
- 51** Heat Recovery Ventilator (HRV)
- 52** Humidifier
- 53** 200amp Electrical Service
- 54** Luxurious 40oz. broadloom
- 55** Water saving high volume toilet

# HEATHWOOD

\* As per plan. \*\*Except where beams and heating equipment are required.  
(SH) Smart Home features where applicable. See Sales Representative for details.  
Dimensions, specifications and architectural detailing are subject to changes without notice.  
All renderings and landscape features are artist's concept. E. & O.E. September 2023.