



NORTHSHORE



**HOT LIST**

Feature Suites - One SUITE Deal.. Parking INCLUDED!									
Suite	Price	Model	View	SqFt	Bed	Bath	Outdoor	Ceiling	Status
301	\$649,990 (1 PARKING SPOT INCLUDED)	1F+D-b	W	618	1B+D	1	84	9'	A
208	\$849,990 (1 PARKING SPOT INCLUDED)	2A+D-t	NW	786	2B+D	2	74	10'	A
608	\$849,990 (1 PARKING SPOT INCLUDED)	2A+D-b	NW	786	2B+D	2	74	10'	A
Suite	Price	Model	View	SqFt	Bed	Bath	Outdoor	Ceiling	Status
101	\$743,990	1M+D	E	671	1B+D	2	124	10'	A
104	\$710,990	1H+D	E	645	1B+D	1	140	10'	A
220	\$918,990	2H	SW	862	2B	2	189	10'	A
314	\$838,990	2C-b	NE	719	2B	2	185	9'	A
319	\$1,005,990	3C+D-T	SE	998	3B+D	2	92	9'	A
LPH08	\$653,990	1E-t	N	511	1B	1	91	9'	A
PH05	\$1,025,990	2D+D-b	SW	910	2B+D	2	157	10'	A
PH07	\$670,990	1E-B	N	511	1B	1	91	9'	A
PH15	\$950,990	2B+D	E	797	2B+D	2	86	9'	A

LIMITED TIME INCENTIVES	
Free Assignment ** CAPPED Development Charges at \$10,000 Free Right to Lease During Occupancy **	
PARKING & LOCKER	MAINTENANCE FEES*
Parking <del>\$50,000</del> NOW \$45,000+HST  Standard Locker \$5,000+HST	Condo Fee - \$0.65/sf Parking - \$69.95/month Locker - \$19.95/month Bulk Internet - \$68/month
OCCUPANCY	TAXES*
July 2025	Approximately 0.008%
DEPOSIT STRUCTURE	
LIMITED TIME DEPOSIT STRUCTURE  \$5,000 Bank Draft on signing Balance to 5% in 30 Days 5% in January 2, 2024 5% in January 2, 2025 5% on Occupancy  Bank Drafts and Cheques made payable to: <b>Brattys LLP In Trust</b>	
<b>Sherry Sholdice</b> Sales Representative Phone Number: 416-420-4284	<b>Sunya Farshchian</b> Sales Representative Phone Number: 647-405-7869

Northshore Sales Office – 484 Plains Rd E, Burlington, ON

E-mail: admin@mynorthshore.ca Phone Number: 905-333-4445

\*All prices, figures and materials are preliminary and are subject to change without notice. Prices include HST. Square footages and dimensions are approximate only and are calculated in accordance with the HCRA Directive regarding Floor Area Calculations. Note: Actual usable floor space may vary from the stated floor area. \*\*Purchaser legal costs are not included in the incentive. Exclusive listing brokerage Baker Real Estate Incorporated. Brokers protected. E & O.E. October 4, 2023

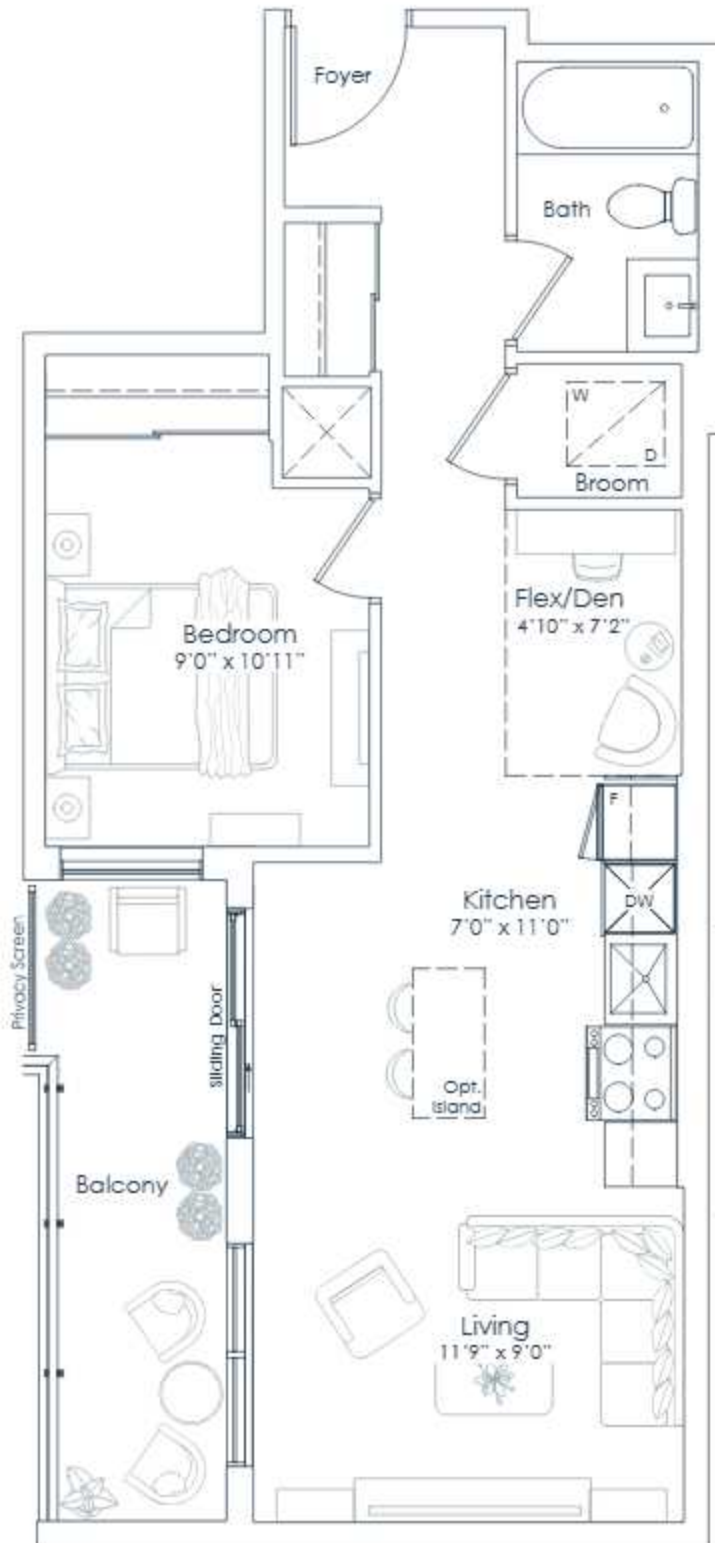


NORTHSHORE

INTERIOR: 618 SF  
EXTERIOR: 84 SF  
**TOTAL: 702 SF**  
FLOORS: 3 TO 8

# 618

1 BEDROOM+DEN



FLOORS 7 TO 8



FLOORS 3 TO 6

This plan is not to scale and is subject to architectural review and revision. All details are approximate and subject to change without notice in order to comply with building site conditions and municipal, structural, architectural and/or Vendor requirements. Balconies and/or terraces, if any, are exclusive use common elements, shown for display purposes only and location, size and design of such are subject to change without notice. Actual unit and/or balcony and/or terrace may be a reverse mirror image of the plan presented. Units may include bulkheads, angled windows and/or angled columns. The location, size and type of windows, view treatments (including frit patterning, mullion/metal panel placement or other visual treatments) and exterior building elements may vary without notice. Suites are sold unfurnished. All illustrations are artist concept only. E & O.E. April 2023 1F+D-B

**NATIONAL**  
HOMES

You are the blueprint™

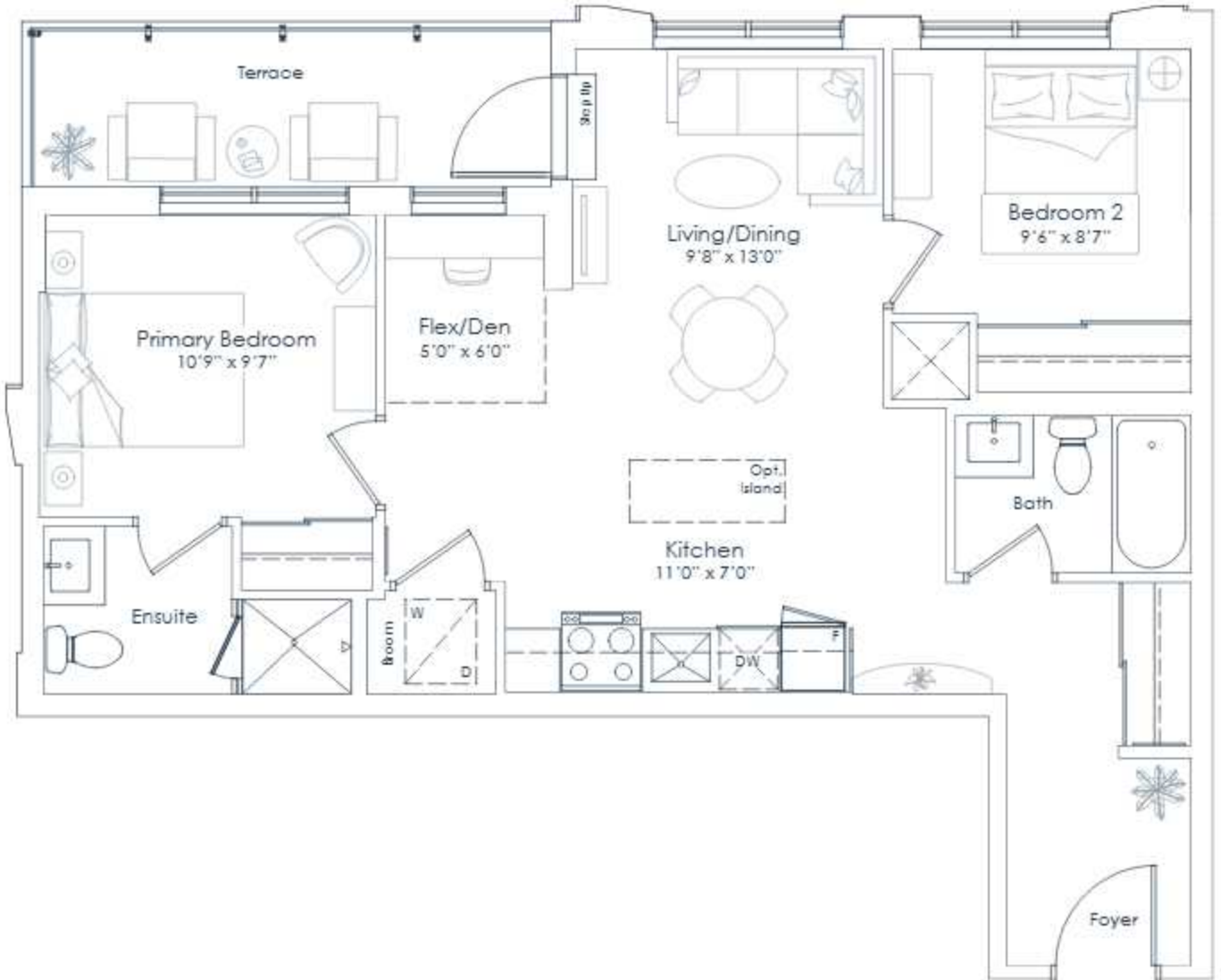


NORTHSHORE

INTERIOR: 786 SF  
EXTERIOR: 74 SF  
TOTAL: 860 SF  
FLOOR: 2

# 786

2 BEDROOM+DEN



FLOOR 2

This plan is not to scale and is subject to architectural review and revision. All details are approximate and subject to change without notice in order to comply with building site conditions and municipal, structural, architectural and/or Vendor requirements. Balconies and/or terraces, if any, are exclusive use common elements, shown for display purposes only and location, size and design of such are subject to change without notice. Actual unit and/or balcony and/or terrace may be a reverse mirror image of the plan presented. Units may include bulkheads, angled windows and/or angled columns. The location, size and type of windows, view treatments (including frit patterning, mullion/metal panel placement or other visual treatments) and exterior building elements may vary without notice. Suites are sold unfurnished. All illustrations are artist concept only. E & O.E. April 2023 2A+D-T



You are the blueprint™

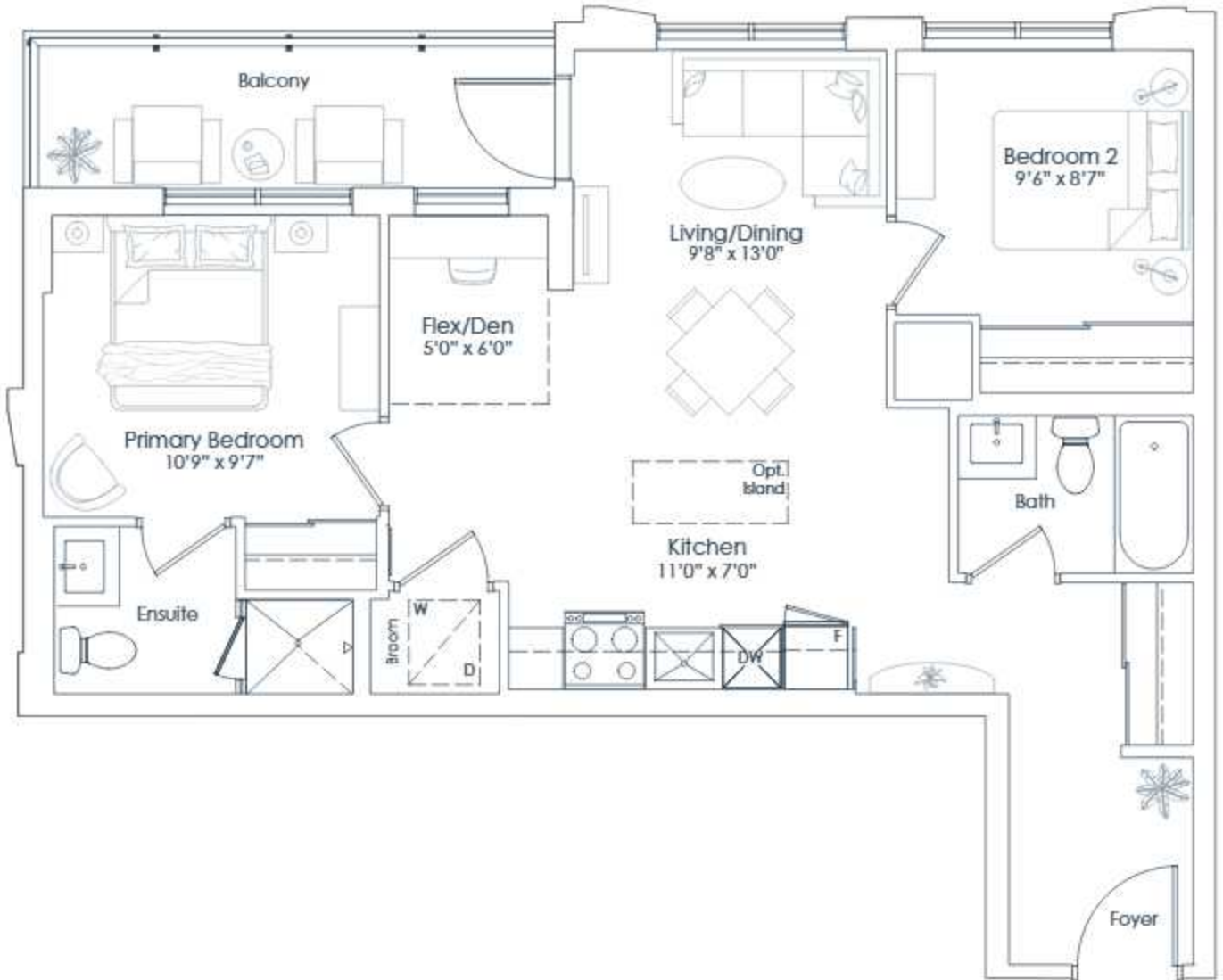


NORTHSHORE

INTERIOR: 786 SF  
EXTERIOR: 74 SF  
TOTAL: 860 SF  
FLOORS: 3 TO 6

# 786

2 BEDROOM+DEN



FLOORS 3 TO 6

This plan is not to scale and is subject to architectural review and revision. All details are approximate and subject to change without notice in order to comply with building site conditions and municipal, structural, architectural and/or Vendor requirements. Balconies and/or terraces, if any, are exclusive use common elements, shown for display purposes only and location, size and design of such are subject to change without notice. Actual unit and/or balcony and/or terrace may be a reverse mirror image of the plan presented. Units may include bulkheads, angled windows and/or angled columns. The location, size and type of windows, view treatments (including frit patterning, mullion/metal panel placement or other visual treatments) and exterior building elements may vary without notice. Suites are sold unfurnished. All illustrations are artist concept only. E & O.E. April 2023 2A+D-B

**NATIONAL**  
HOMES

You are the blueprint™

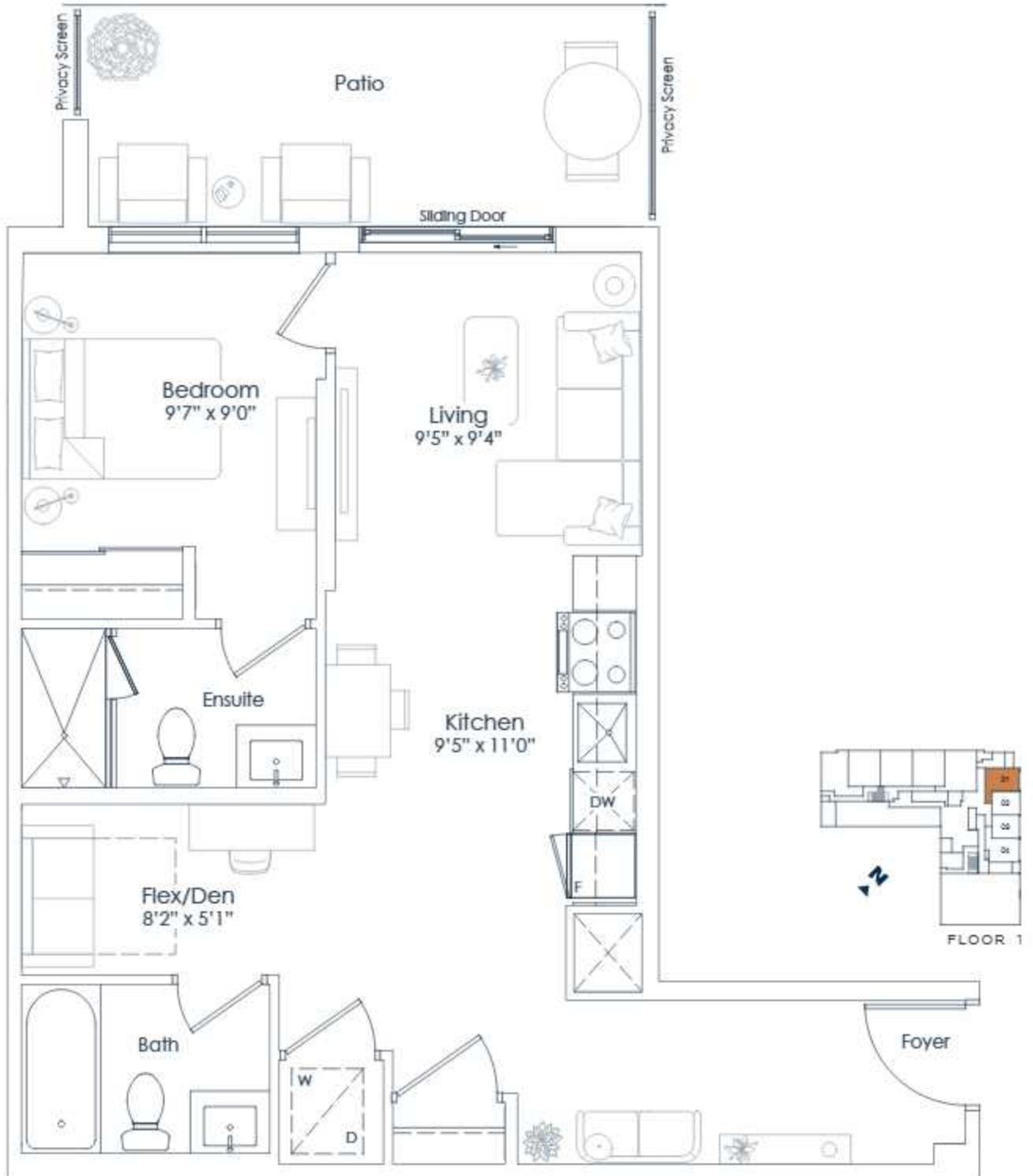


NORTHSHORE

INTERIOR: 671 SF  
EXTERIOR: 124 SF  
TOTAL: 795 SF  
FLOOR: 1

# 671

1 BEDROOM+DEN



This plan is not to scale and is subject to architectural review and revision. All details are approximate and subject to change without notice in order to comply with building site conditions and municipal, structural, architectural and/or Vendor requirements. Balconies and/or terraces, if any, are exclusive use common elements, shown for display purposes only and location, size and design of such are subject to change without notice. Actual unit and/or balcony and/or terrace may be a reverse mirror image of the plan presented. Units may include bulkheads, angled windows and/or angled columns. The location, size and type of windows, view treatments (including frit patterning, mullion/metal panel placement or other visual treatments) and exterior building elements may vary without notice. Suites are sold unfurnished. All illustrations are artist concept only. E & O.E. April 2023 1M-D

**NATIONAL**  
HOMES  
You are the blueprint™

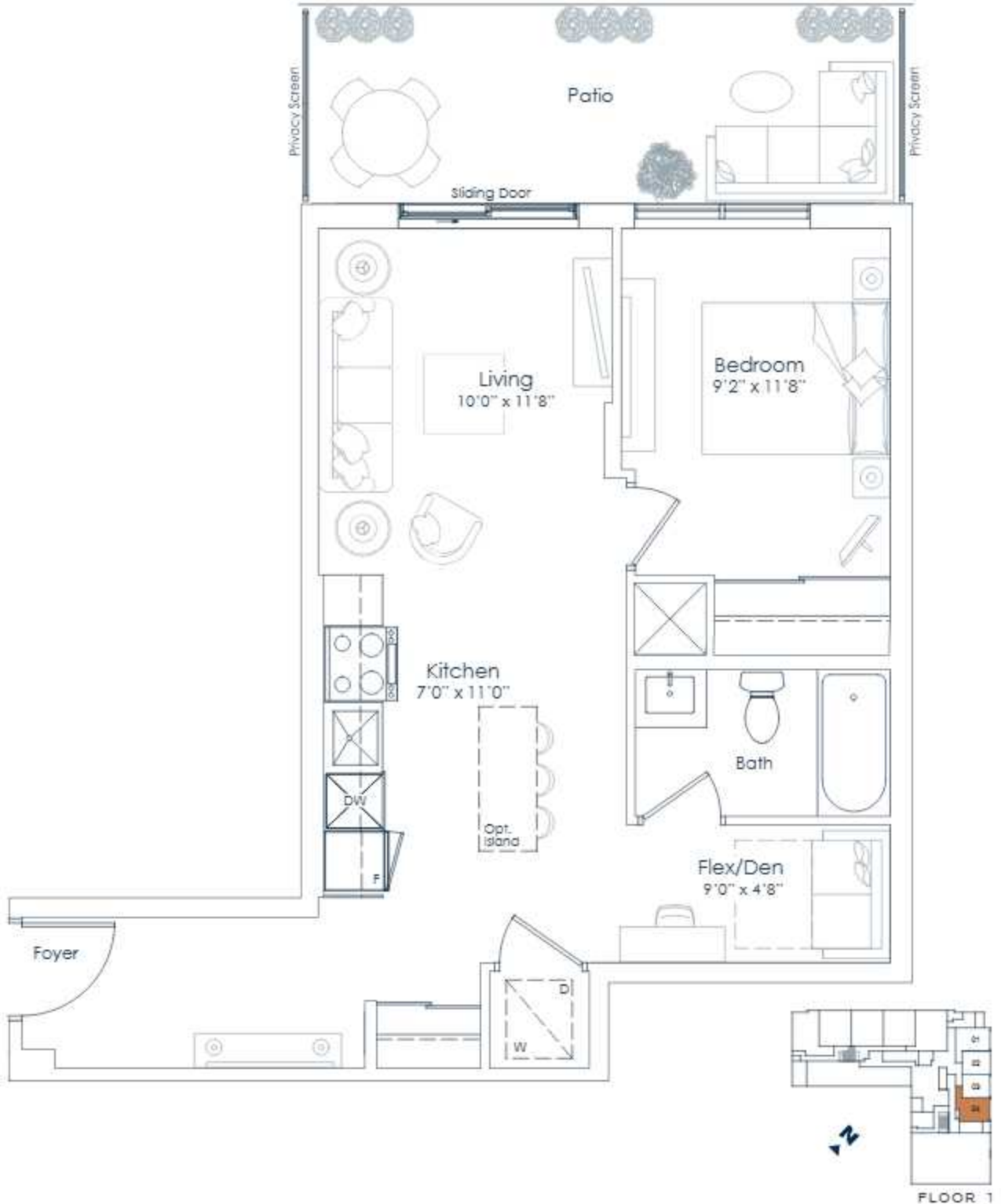


NORTHSHORE

INTERIOR: 645 SF  
EXTERIOR: 140 SF  
TOTAL: 785 SF  
FLOOR: 1

# 645

1 BEDROOM+DEN



This plan is not to scale and is subject to architectural review and revision. All details are approximate and subject to change without notice in order to comply with building site conditions and municipal, structural, architectural and/or Vendor requirements. Balconies and/or terraces, if any, are exclusive use common elements, shown for display purposes only and location, size and design of such are subject to change without notice. Actual unit and/or balcony and/or terrace may be a reverse mirror image of the plan presented. Units may include bulkheads, angled windows and/or angled columns. The location, size and type of windows, view treatments (including frit patterning, mullion/metal panel placement or other visual treatments) and exterior building elements may vary without notice. Suites are sold unfurnished. All illustrations are artist concept only. E&O.E. April 2023 1H+D

**NATIONAL**  
HOMES  
You are the blueprint™

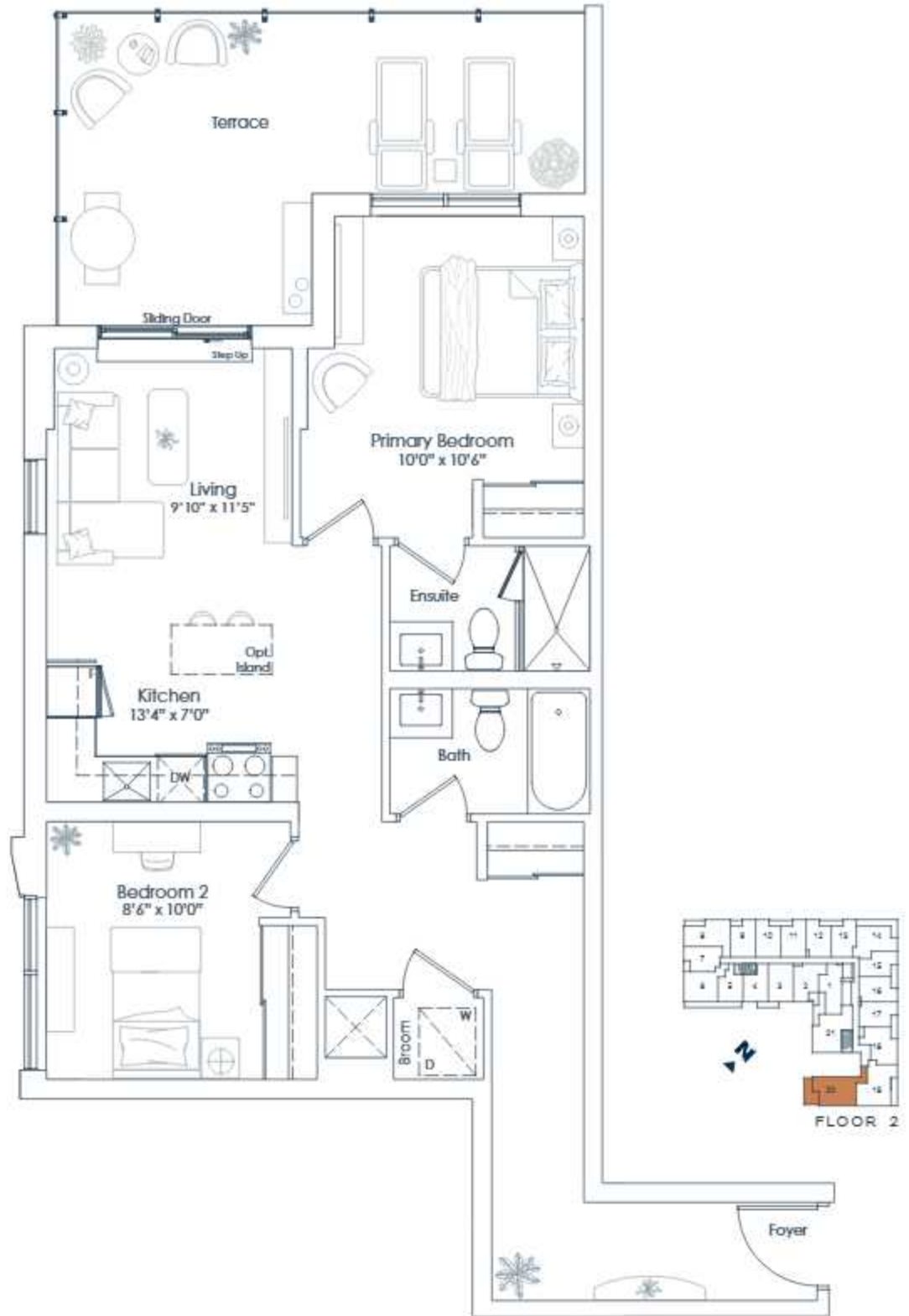


NORTHSHORE

INTERIOR: 862 SF  
EXTERIOR: 189 SF  
TOTAL: 1,051 SF  
FLOOR: 2

# 862

2 BEDROOM



This plan is not to scale and is subject to architectural review and revision. All details are approximate and subject to change without notice in order to comply with building site conditions and municipal, structural, architectural and/or Vendor requirements. Balconies and/or terraces, if any, are exclusive use common elements, shown for display purposes only and location, size and design of such are subject to change without notice. Actual unit and/or balcony and/or terrace may be a reverse mirror image of the plan presented. Units may include bulkheads, angled windows and/or angled columns. The location, size and type of windows, view treatments (including frit patterning, mullion/metal panel placement or other visual treatments) and exterior building elements may vary without notice. Suites are sold unfurnished. All illustrations are artist concept only. E & O.E. April 2023 2H

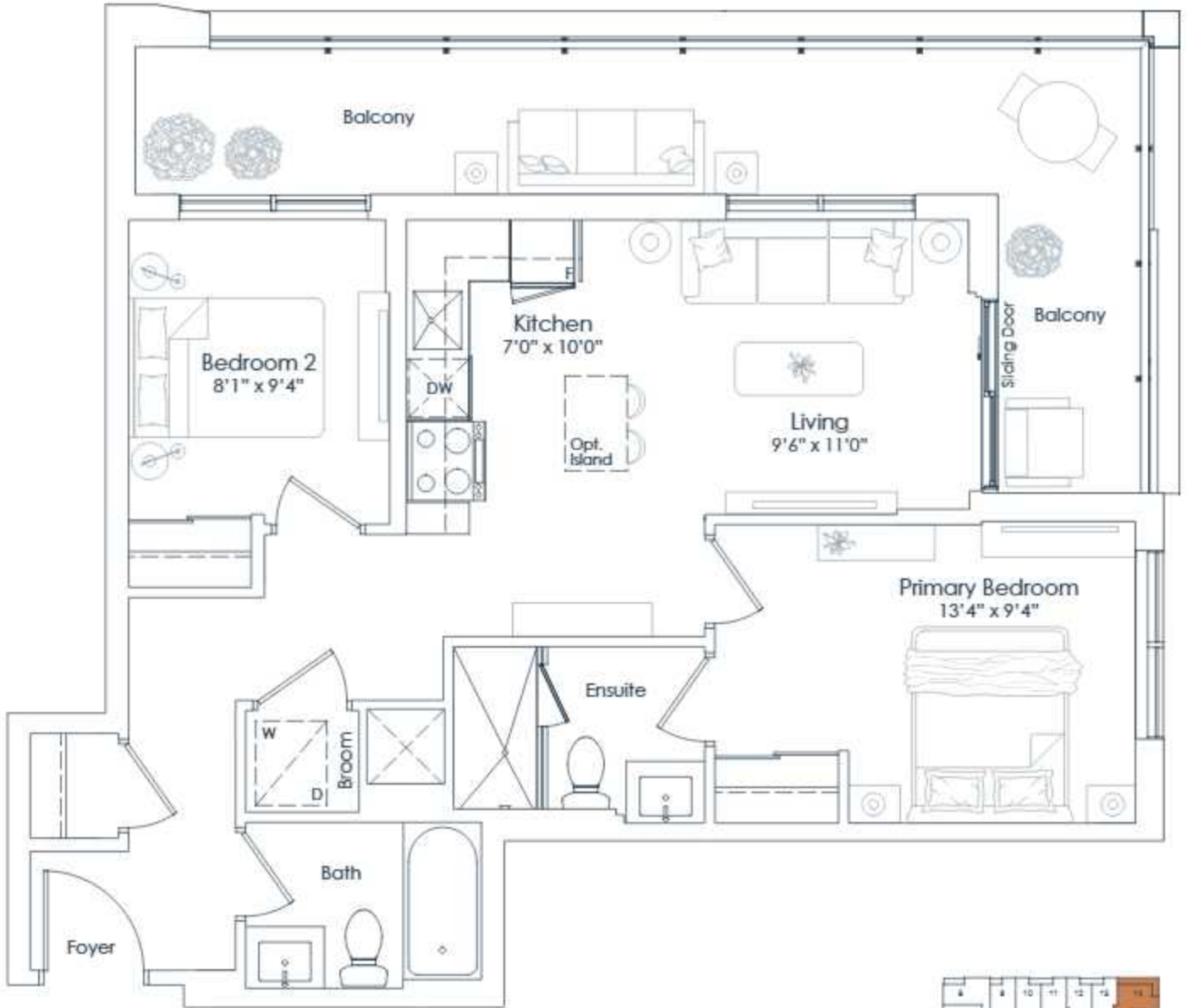
**NATIONAL**  
H O M E S  
You are the blueprint™



NORTHSHORE

INTERIOR: 719 SF  
EXTERIOR: 185 SF  
TOTAL: 904 SF  
FLOORS: 3 TO 6

**719**  
2 BEDROOM



FLOORS 3 TO 6

This plan is not to scale and is subject to architectural review and revision. All details are approximate and subject to change without notice in order to comply with building site conditions and municipal, structural, architectural and/or Vendor requirements. Balconies and/or terraces, if any, are exclusive use common elements, shown for display purposes only and location, size and design of such are subject to change without notice. Actual unit and/or balcony and/or terrace may be a reverse mirror image of the plan presented. Units may include bulkheads, angled windows and/or angled columns. The location, size and type of windows, view treatments (including frit patterning, mullion/metal panel placement or other visual treatments) and exterior building elements may vary without notice. Suites are sold unfurnished. All illustrations are artist concept only. E & O.E. April 2023 2C-B

**NATIONAL**  
HOMES  
You are the blueprint™



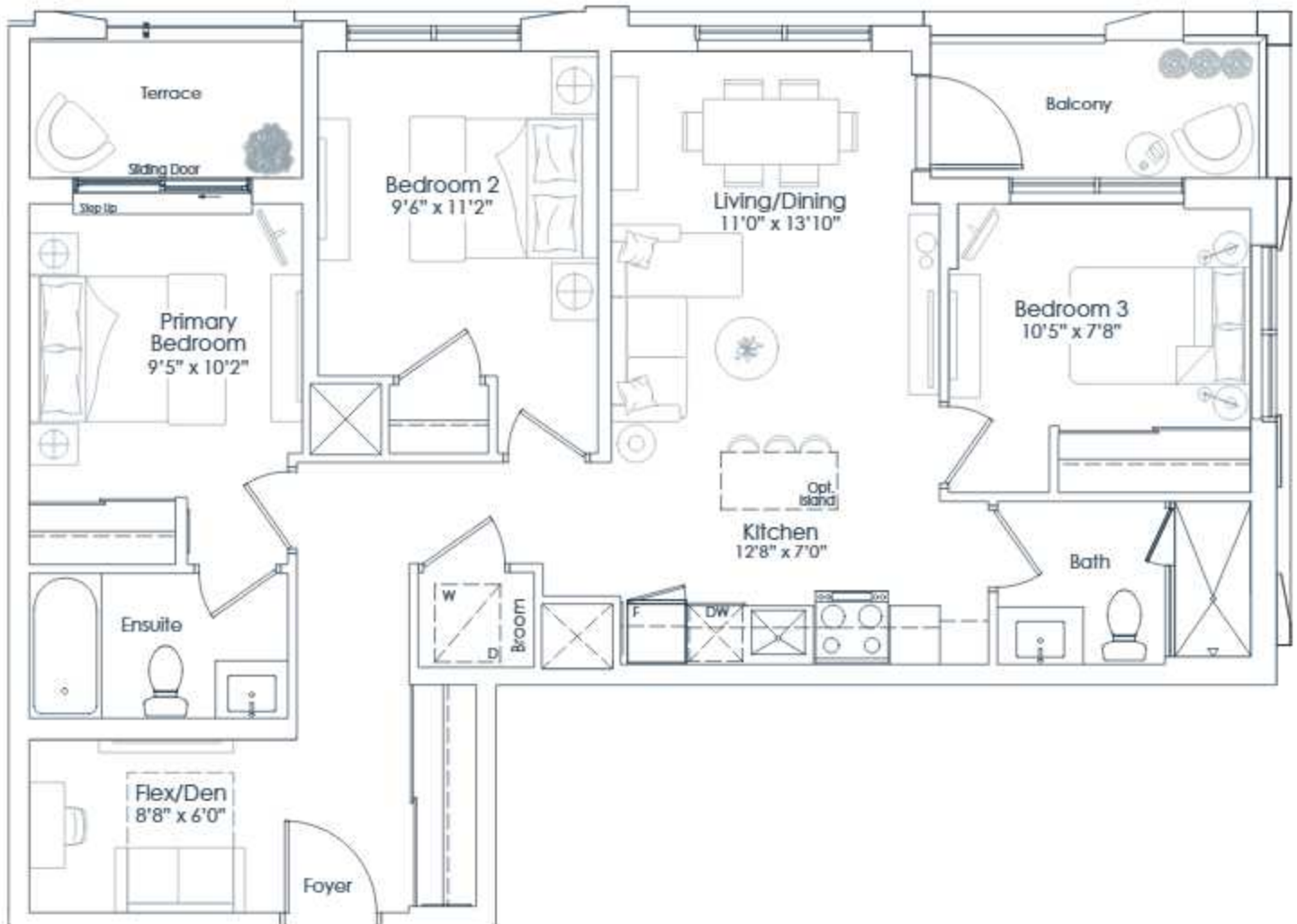


NORTHSHORE

INTERIOR: 998 SF  
EXTERIOR: 92 SF  
**TOTAL: 1,090 SF**  
FLOOR: 3

# 998

3 BEDROOM+DEN



FLOOR 3

This plan is not to scale and is subject to architectural review and revision. All details are approximate and subject to change without notice in order to comply with building site conditions and municipal, structural, architectural and/or Vendor requirements. Balconies and/or terraces, if any, are exclusive use common elements, shown for display purposes only and location, size and design of such are subject to change without notice. Actual unit and/or balcony and/or terrace may be a reverse mirror image of the plan presented. Units may include bulkheads, angled windows and/or angled columns. The location, size and type of windows, view treatments (including frit patterning, mullion/metal panel placement or other visual treatments) and exterior building elements may vary without notice. Suites are sold unfurnished. All illustrations are artist concept only. E & O.E. April 2023 3C+D-T

**NATIONAL**  
HOMES  
You are the blueprint™



NORTHSHORE

INTERIOR: 511 SF  
EXTERIOR: 91 SF  
TOTAL: 602 SF  
FLOOR: 8

511  
1 BEDROOM



FLOOR 8

This plan is not to scale and is subject to architectural review and revision. All details are approximate and subject to change without notice in order to comply with building site conditions and municipal, structural, architectural and/or Vendor requirements. Balconies and/or terraces, if any, are exclusive use common elements, shown for display purposes only and location, size and design of such are subject to change without notice. Actual unit and/or balcony and/or terrace may be a reverse mirror image of the plan presented. Units may include bulkheads, angled windows and/or angled columns. The location, size and type of windows, view treatments (including frit patterning, mullion/metal panel placement or other visual treatments) and exterior building elements may vary without notice. Suites are sold unfurnished. All illustrations are artist concept only. E & O.E. April 2023 1E-B

**NATIONAL**  
HOMES  
You are the blueprint™

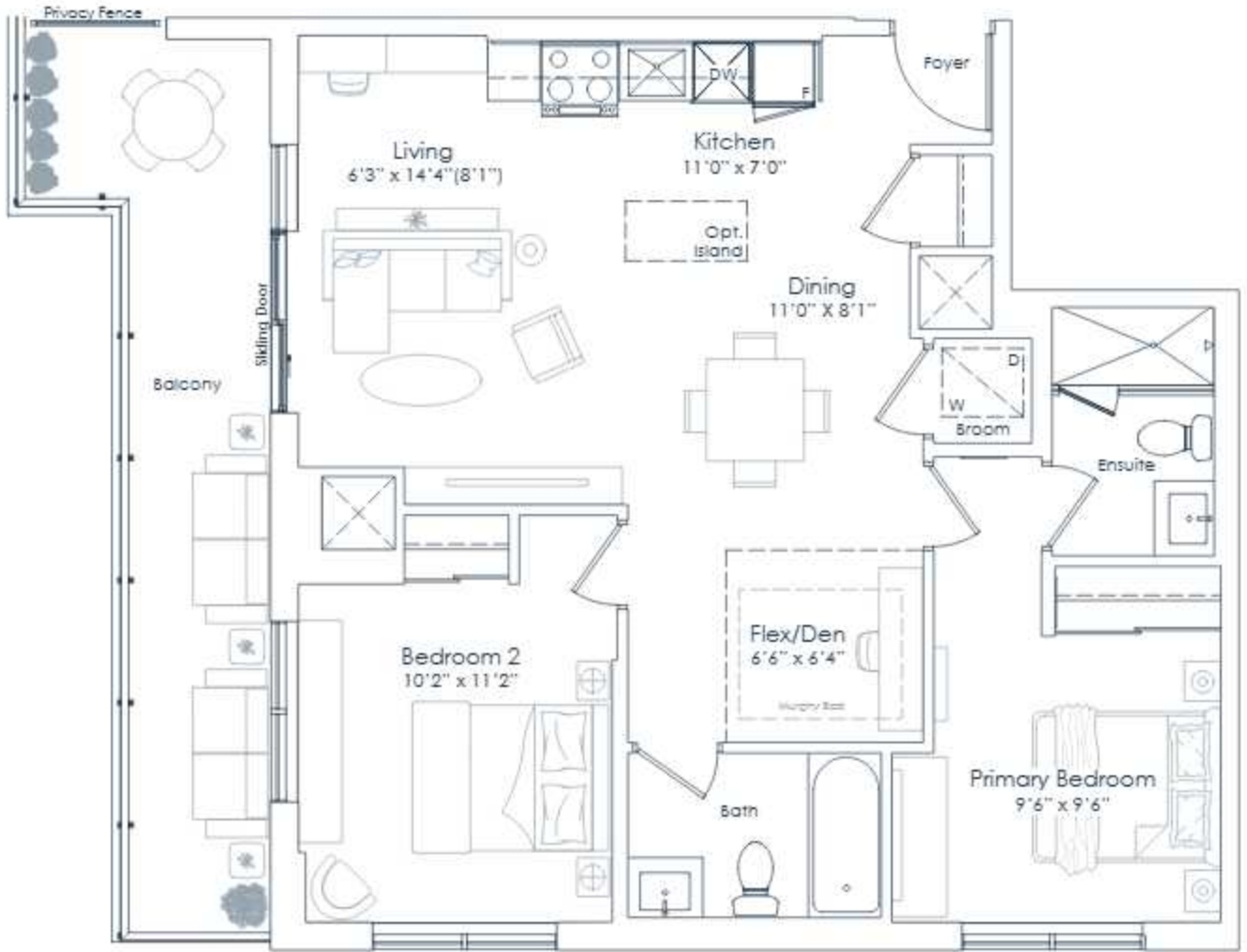


NORTHSHORE

INTERIOR: 910 SF  
EXTERIOR: 157 SF  
TOTAL: 1,067 SF  
FLOOR: 8

# 910

2 BEDROOM+DEN



FLOOR 8

This plan is not to scale and is subject to architectural review and revision. All details are approximate and subject to change without notice in order to comply with building site conditions and municipal, structural, architectural and/or Vendor requirements. Balconies and/or terraces, if any, are exclusive use common elements, shown for display purposes only and location, size and design of such are subject to change without notice. Actual unit and/or balcony and/or terrace may be a reverse mirror image of the plan presented. Units may include bulkheads, angled windows and/or angled columns. The location, size and type of windows, view treatments (including frit patterning, mullion/metal panel placement or other visual treatments) and exterior building elements may vary without notice. Suites are sold unfurnished. All illustrations are artist concept only. E & O.E. April 2023 20-D-B

**NATIONAL**  
HOMES

You are the blueprint™



NORTHSHORE

INTERIOR: 511 SF  
EXTERIOR: 91 SF  
TOTAL: 602 SF  
FLOOR: 7

# 511

1 BEDROOM



FLOOR 7

This plan is not to scale and is subject to architectural review and revision. All details are approximate and subject to change without notice in order to comply with building site conditions and municipal, structural, architectural and/or Vendor requirements. Balconies and/or terraces, if any, are exclusive use common elements, shown for display purposes only and location, size and design of such are subject to change without notice. Actual unit and/or balcony and/or terrace may be a reverse mirror image of the plan presented. Units may include bulkheads, angled windows and/or angled columns. The location, size and type of windows, view treatments (including frit patterning, mullion/metal panel placement or other visual treatments) and exterior building elements may vary without notice. Suites are sold unfurnished. All illustrations are artist concept only. E & O.E. April 2023 1E-T

**NATIONAL**  
HOMES

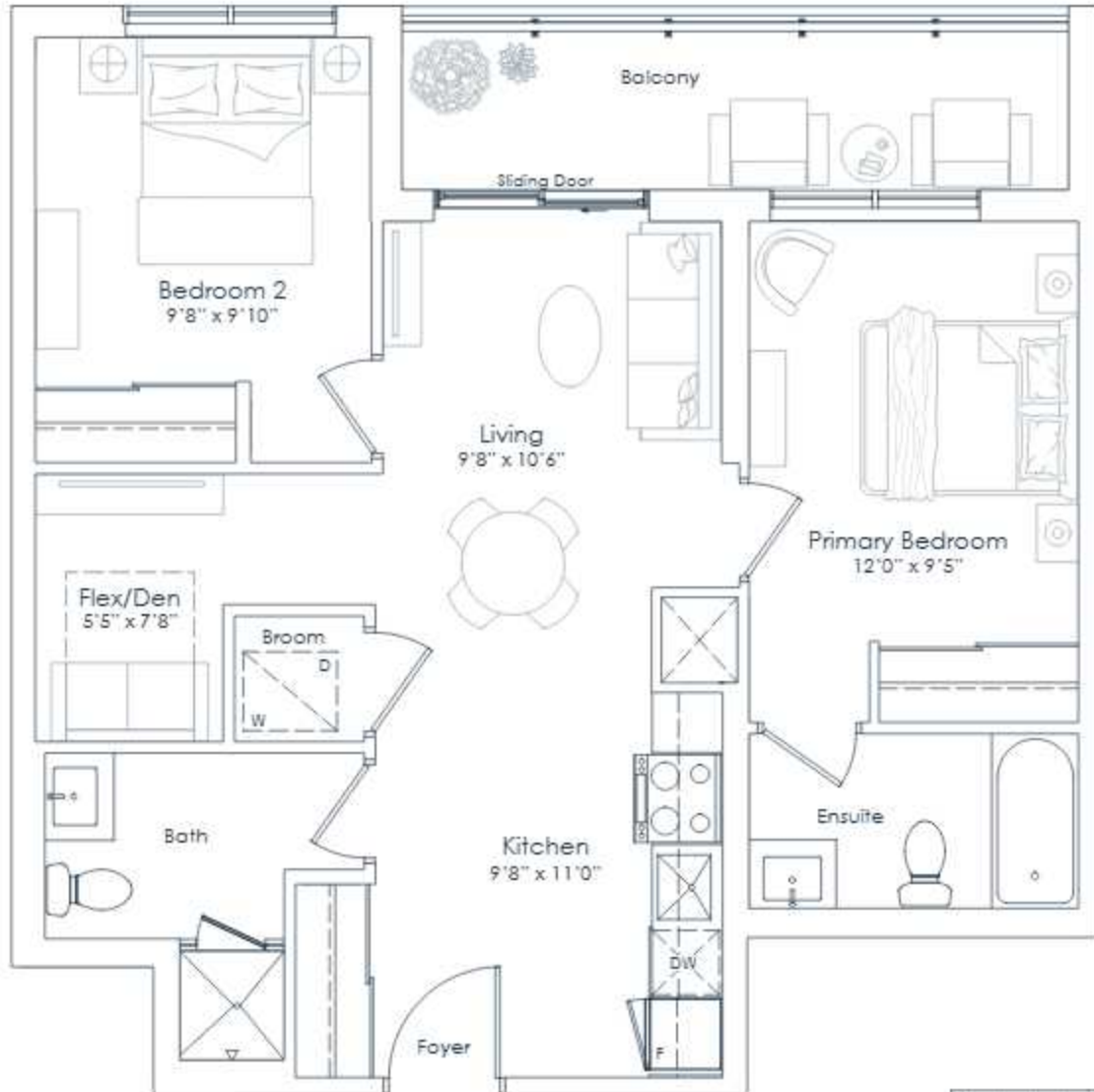
You are the blueprint™



NORTHSHORE

INTERIOR: 797 SF  
EXTERIOR: 86 SF  
**TOTAL: 883 SF**  
FLOORS: 7 TO 8

**797**  
2 BEDROOM+DEN



FLOORS 7 TO 8

This plan is not to scale and is subject to architectural review and revision. All details are approximate and subject to change without notice in order to comply with building site conditions and municipal, structural, architectural and/or Vendor requirements. Balconies and/or terraces, if any, are exclusive use common elements, shown for display purposes only and location, size and design of such are subject to change without notice. Actual unit and/or balcony and/or terrace may be a reverse mirror image of the plan presented. Units may include bulkheads, angled windows and/or angled columns. The location, size and type of windows, view treatments (including frit patterning, mullion/metal panel placement or other visual treatments) and exterior building elements may vary without notice. Suites are sold unfurnished. All illustrations are artist concept only. E.&O.E. April 2023 2B+D

**NATIONAL**  
**HOMES**  
You are the blueprint™