



## SITE PLAN

SC: 1/500

# ARIA HOMES

1038 Jacarandah Drive, Newmarket, ON L3Y 3G8

SPOTLIGHT

DEVELOPMENT



P2 REALTY  
BROKERAGE



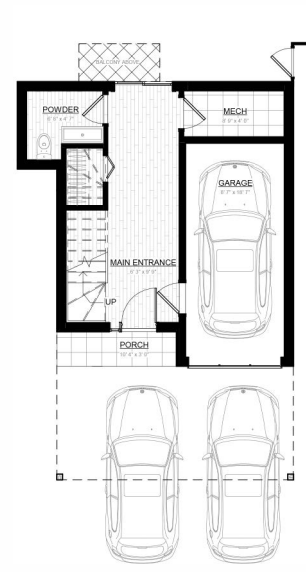
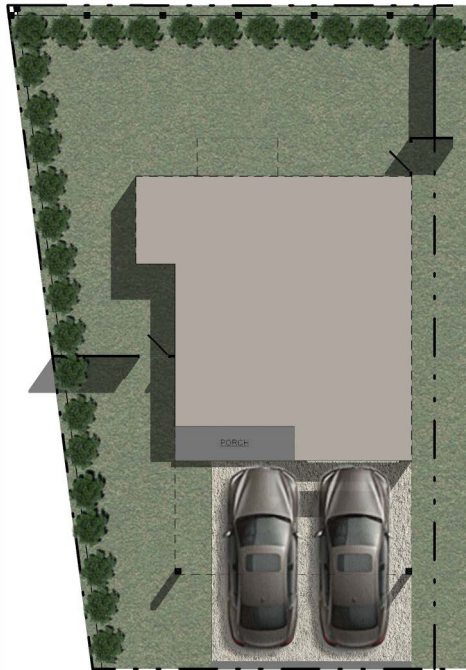
## ARIA HOMES

### UNIT 1

SINGLE FAMILY DWELLING

3 Bedrooms & 2.5 Bathrooms

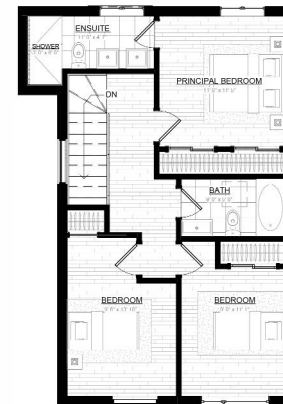
Total area: 1810 sqft



GROUND FLOOR PLAN



SECOND FLOOR PLAN



THIRD FLOOR PLAN

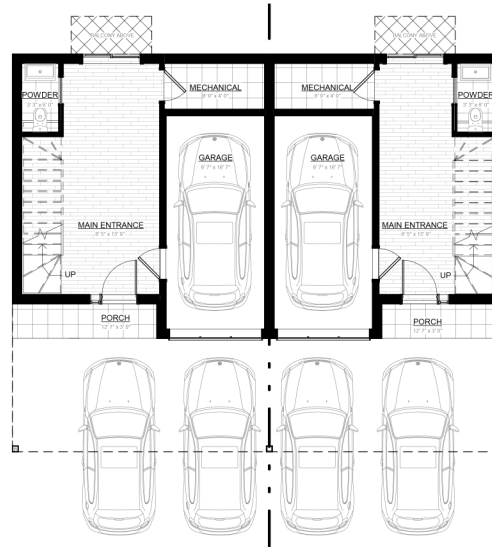
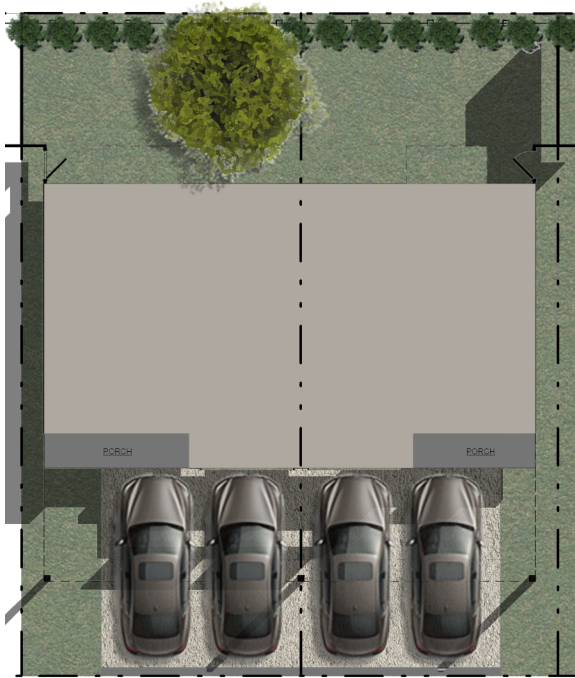


SC: 1/200

All dimensions are estimates only and may not be exact measurements. Square Footages are approximate.



P2 REALTY  
BROKERAGE



GROUND FLOOR PLAN

SPOTLIGHT

DEVELOPMENT

# ARIA HOMES

UNITS 2,4,6,8(L) 9(R)

SEMI-DETACHED DWELLING

3 Bedrooms & 2.5 Bathrooms

Total area: 1895 sqft

UNITS 3,5,7 (R)

SEMI-DETACHED DWELLING

3 Bedrooms & 2.5 Bathrooms

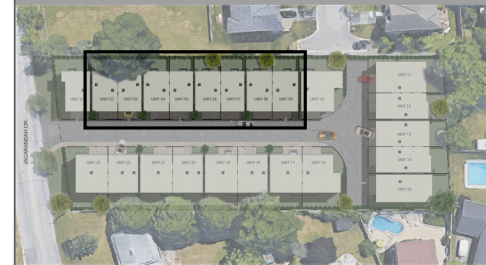
Total area: 1716 sqft



SECOND FLOOR PLAN



THIRD FLOOR PLAN



SC: 1/200

All dimensions are estimates only and may not be exact measurements. Square Footages are approximate.



P2 REALTY  
BROKERAGE

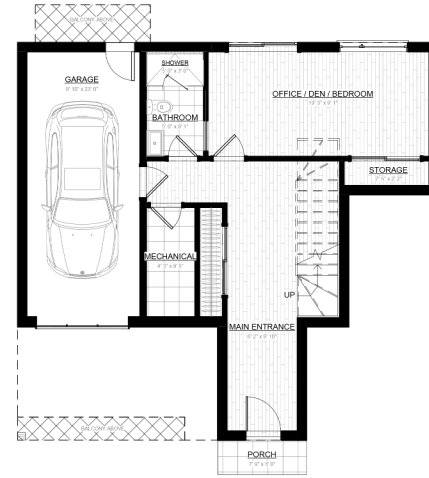
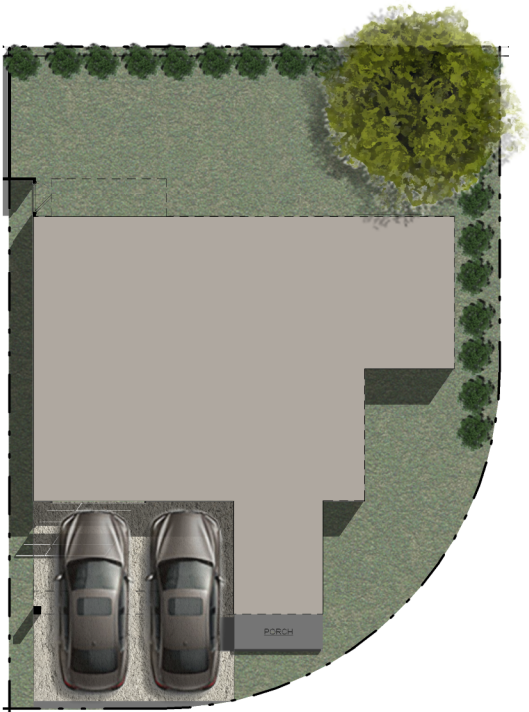
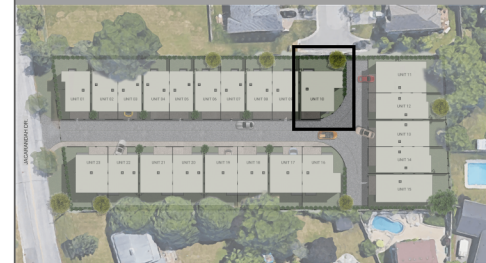
## ARIA HOMES

### UNIT 10

SINGLE FAMILY DWELLING

3 Bedrooms + Office & 3.5 Bathrooms

Total area: 2752 sqft



GROUND FLOOR PLAN



SECOND FLOOR PLAN



THIRD FLOOR PLAN

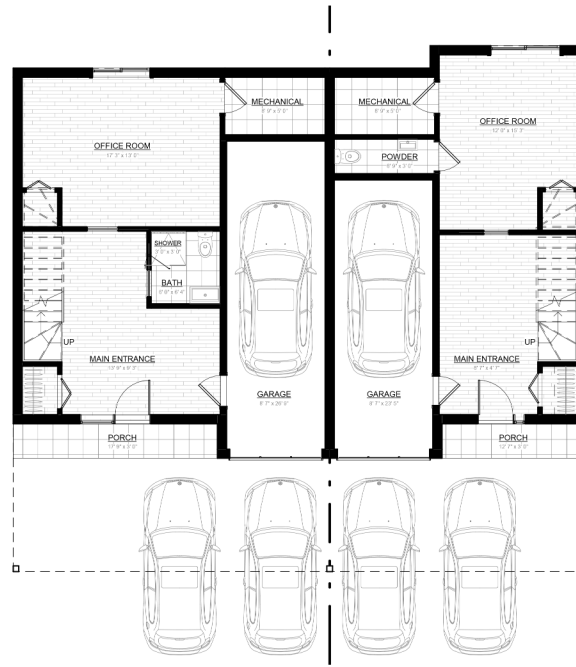
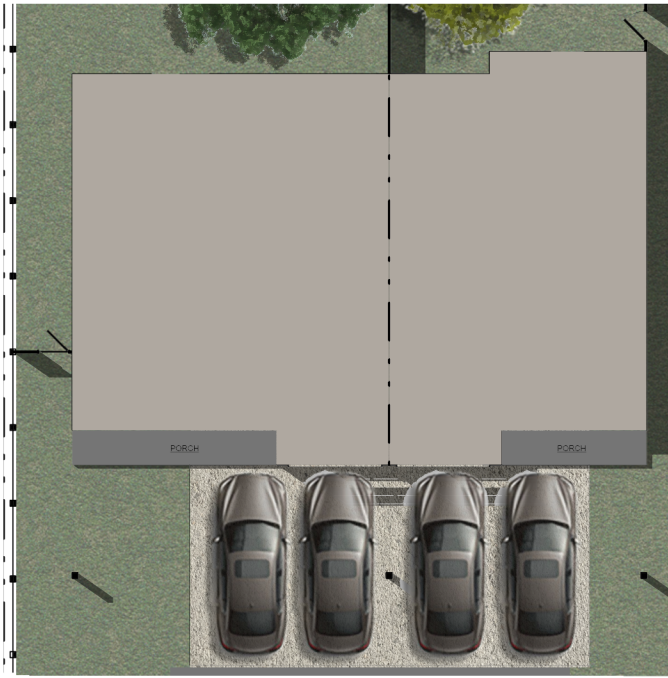


SC: 1/200

All dimensions are estimates only and may not be exact measurements. Square Footages are approximate.



P2 REALTY  
BROKERAGE



GROUND FLOOR PLAN



SECOND FLOOR PLAN



THIRD FLOOR PLAN

SPOTLIGHT

DEVELOPMENT

ARIA HOMES

UNIT 11 (L)

SEMI-DETACHED DWELLING

3 Bedrooms + Office & 3.5 Bathrooms

Total area: 3002 sqft

UNIT 12 (R)

SEMI-DETACHED DWELLING

3 Bedrooms + Office & 2.5 Bathrooms

Total area: 2498 sqft



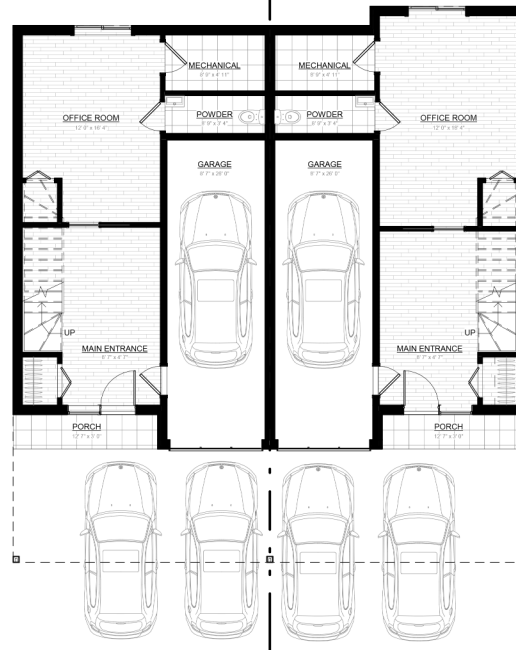
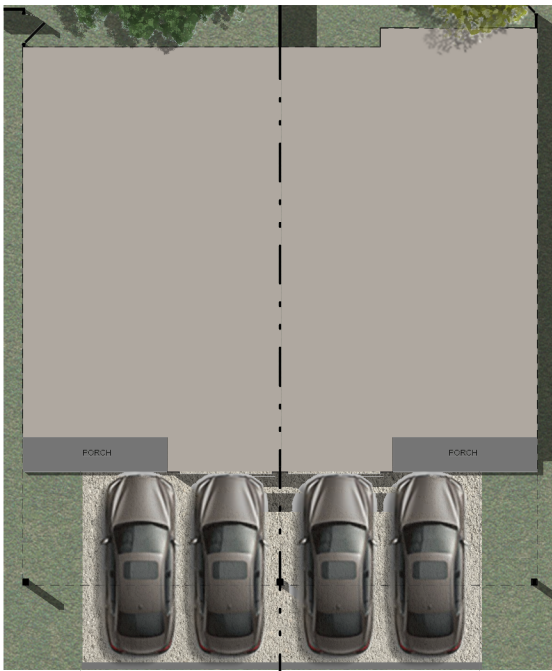
N

SC: 1/200

All dimensions are estimates only and may not be exact measurements. Square Footages are approximate.



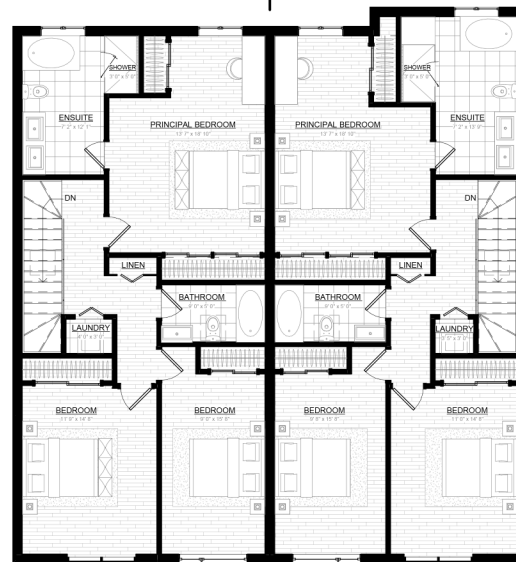
P2 REALTY  
BROKERAGE



GROUND FLOOR PLAN



SECOND FLOOR PLAN



THIRD FLOOR PLAN

SC: 1/200  
 All dimensions are estimates only and may not be exact measurements. Square Footages are approximate.

ARIA HOMES

UNIT 13 (L)

SEMI-DETACHED DWELLING

3 Bedrooms + Office & 2.5 Bathrooms

Total area: 2587 sqft

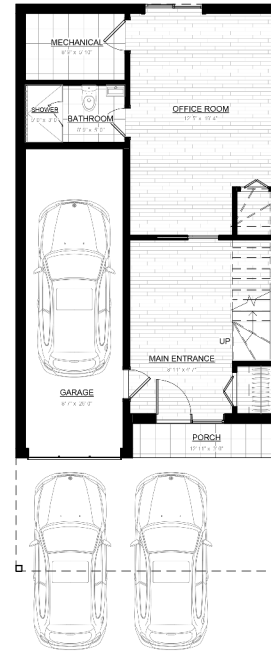
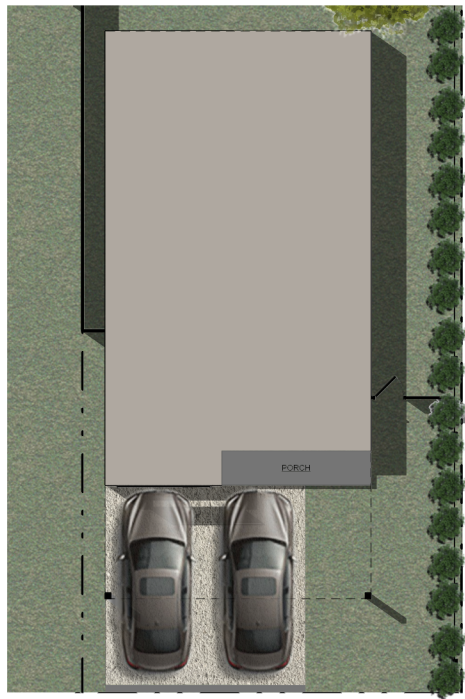
UNIT 14 (R)

SEMI-DETACHED DWELLING

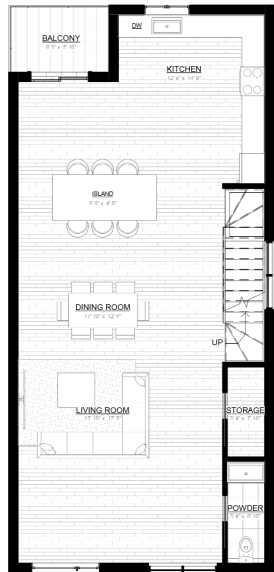
3 Bedrooms + Office & 2.5 Bathrooms

Total area: 2657 sqft

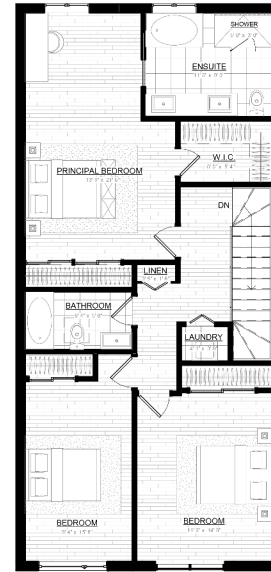




GROUND FLOOR PLAN



SECOND FLOOR PLAN



THIRD FLOOR PLAN

SPOTLIGHT

DEVELOPMENT

ARIA HOMES

UNIT 15

SINGLE FAMILY DWELLING

4 Bedrooms + Office & 3.5 Bathrooms

Total area: 2861 sqft



N

SC: 1/200

All dimensions are estimates only and may not be exact measurements. Square Footages are approximate.



P2 REALTY  
BROKERAGE

## ARIA HOMES

### UNIT 16 (L)

SEMI-DETACHED DWELLING

3 Bedrooms + Office & 3.5 Bathrooms

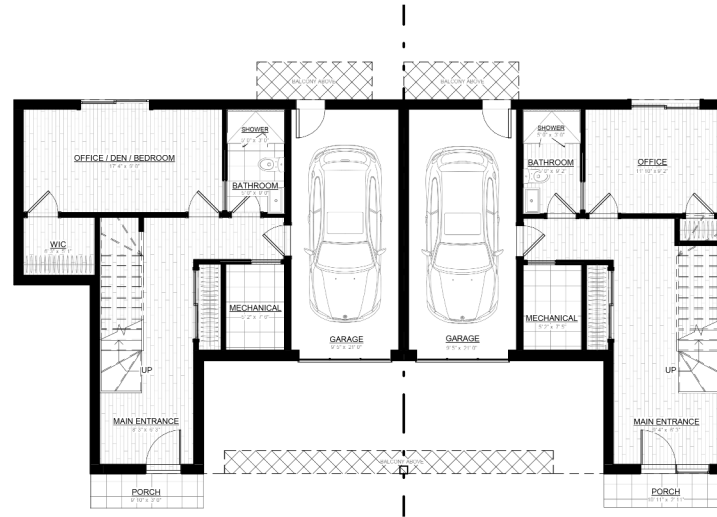
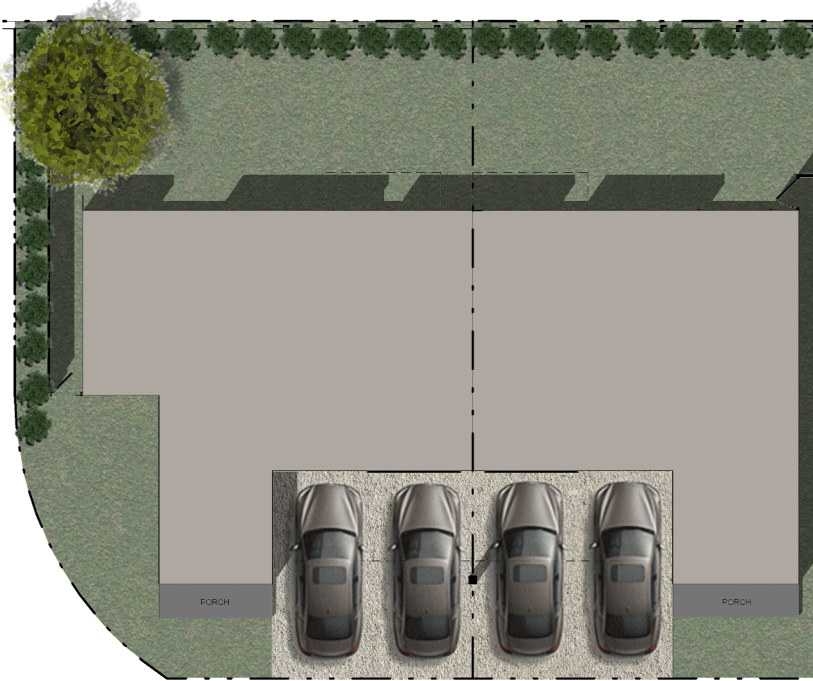
Total area: 2566 sqft

### UNIT 17 (R)

SEMI-DETACHED DWELLING

3 Bedrooms + Office & 3.5 Bathrooms

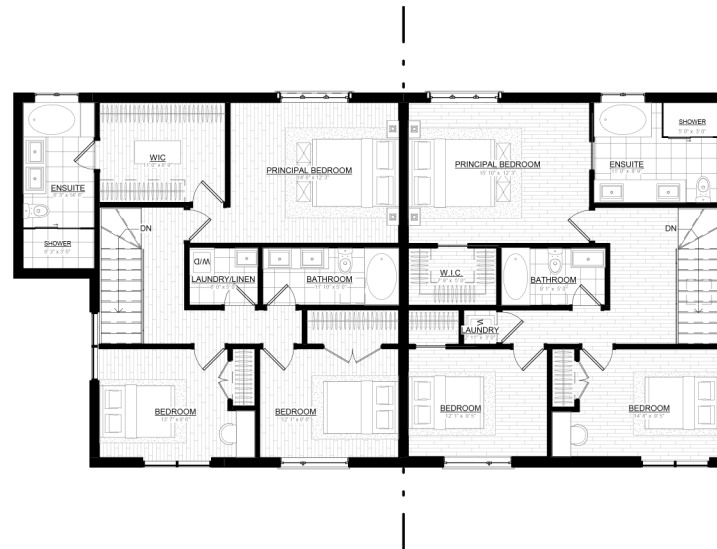
Total area: 2364 sqft



GROUND FLOOR PLAN



SECOND FLOOR PLAN



THIRD FLOOR PLAN



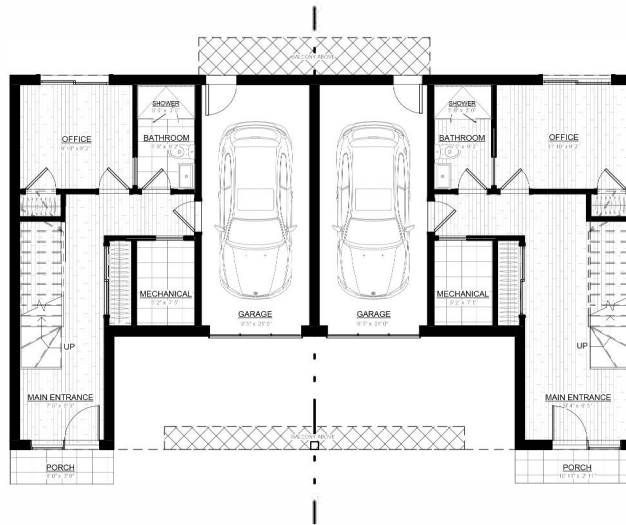
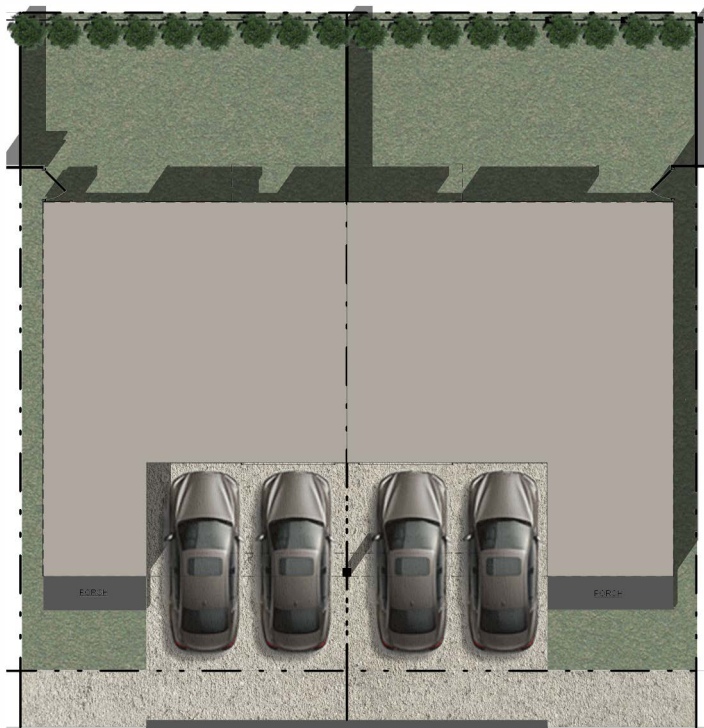
SC: 1/200

All dimensions are estimates only and may not be exact measurements. Square Footages are approximate.



P2 REALTY  
BROKERAGE

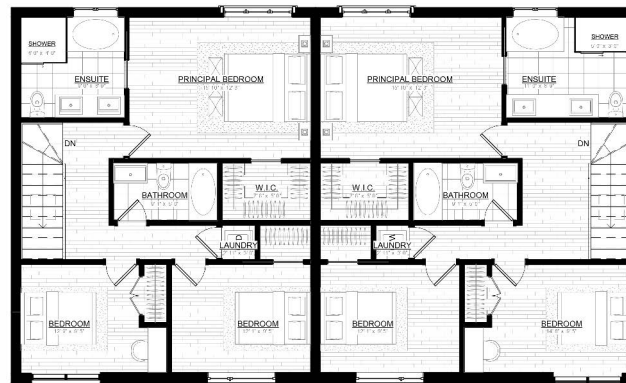




GROUND FLOOR PLAN



SECOND FLOOR PLAN



THIRD FLOOR PLAN

SPOTLIGHT

DEVELOPMENT

ARIA HOMES

UNITS 18,20 (L)

SEMI-DETACHED DWELLING

3 Bedrooms + Office & 3.5 Bathrooms

Total area: 2172 sqft

UNITS 19,21 (R)

SEMI-DETACHED DWELLING

3 Bedrooms + Office & 3.5 Bathrooms

Total area: 2364 sqft

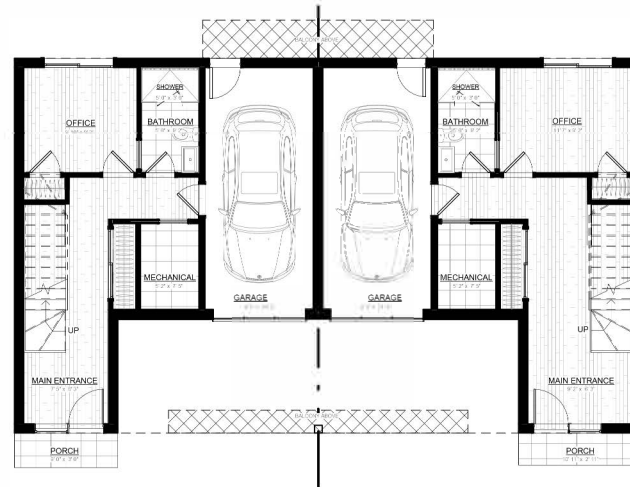
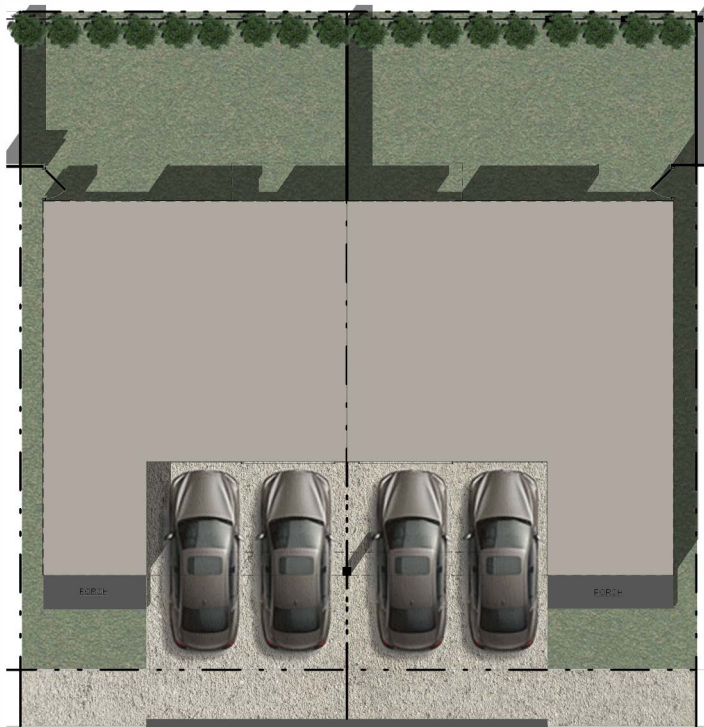


SC: 1/200

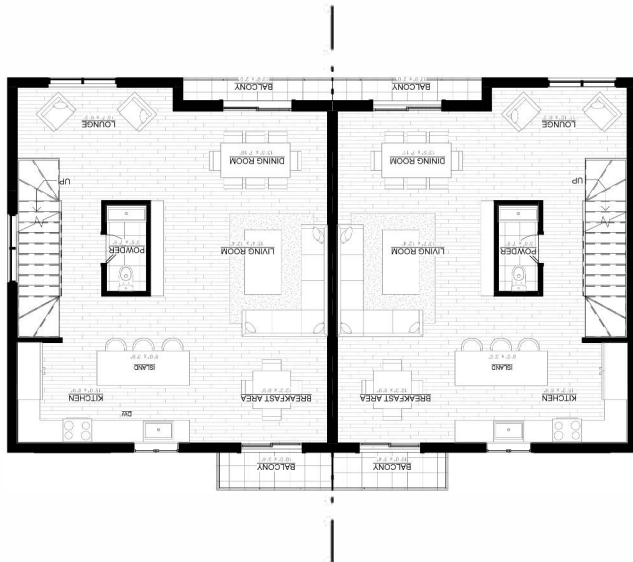
All dimensions are estimates only and may not be exact measurements. Square Footages are approximate.



P2 REALTY  
BROKERAGE



GROUND FLOOR PLAN



SECOND FLOOR PLAN



THIRD FLOOR PLAN

SPOTLIGHT

DEVELOPMENT

# ARIA HOMES

## UNIT 22 (L)

SEMI-DETACHED DWELLING

3 Bedrooms + Office & 3.5 Bathrooms

Total area: 2172 sqft

## UNIT 23 (R)

3 Bedrooms + Office & 3.5 Bathrooms

Total area: 2344 sqft



SC: 1/200

All dimensions are estimates only and may not be exact measurements. Square Footages are approximate.



P2 REALTY  
BROKERAGE