

Hotlist Price List

Suite	Model	Unit Type	Sq. Ft	Exposure	Price	PSF
5511	KIPLING343	Studio	343	West	\$511,000	\$1,490
PH11	KIPLING343	Studio	343	West	\$513,000	\$1,496
3812	KIPLING363	Studio	363	West	\$501,000	\$1,380
4212	KIPLING363	Studio	363	West	\$505,000	\$1,391
4312	KIPLING363	Studio	363	West	\$506,000	\$1,394
4512	KIPLING363	Studio	363	West	\$507,000	\$1,397
5012	KIPLING363	Studio	363	West	\$512,000	\$1,410
5112	KIPLING363	Studio	363	West	\$513,000	\$1,413
5512	KIPLING363	Studio	363	West	\$516,000	\$1,421
5503	KIPLING363B	Studio	363	North	\$535,000	\$1,474
5503	KIPLING363B	Studio	363	North	\$536,000	\$1,477
LPH03	KIPLING363B	Studio	363	North	\$537,000	\$1,479
3306	KIPLING597	1B+D	597	East	\$738,000	\$1,236
3506	KIPLING597	1B+D	597	East	\$739,000	\$1,238
3807	KIPLING597	1B+D	597	East	\$742,000	\$1,243
3808	KIPLING597	1B+D	597	East	\$742,000	\$1,243
4007	KIPLING597	1B+D	597	East	\$744,000	\$1,246
4106	KIPLING597	1B+D	597	East	\$745,000	\$1,248
4206	KIPLING597	1B+D	597	East	\$746,000	\$1,250
4208	KIPLING597	1B+D	597	East	\$746,000	\$1,250
4608	KIPLING597	1B+D	597	East	\$749,000	\$1,255
4806	KIPLING597	1B+D	597	East	\$751,000	\$1,258
4808	KIPLING597	1B+D	597	East	\$751,000	\$1,258
4907	KIPLING597	1B+D	597	East	\$752,000	\$1,260
5006	KIPLING597	1B+D	597	East	\$753,000	\$1,261
5507	KIPLING597	1B+D	597	East	\$757,000	\$1,268
4302	KIPLING652	2B	652	North-West	\$777,000	\$1,192
4602	KIPLING652	2B	652	North-West	\$779,000	\$1,195
4902	KIPLING652	2B	652	North-West	\$782,000	\$1,199
5002	KIPLING652	2B	652	North-West	\$783,000	\$1,201
5102	KIPLING652	2B	652	North-West	\$784,000	\$1,202
5202	KIPLING652	2B	652	North-West	\$785,000	\$1,204
5302	KIPLING652	2B	652	North-West	\$786,000	\$1,206
5502	KIPLING652	2B	652	North-West	\$787,000	\$1,207
709	KIPLING858	3B	858	South-East	\$894,000	\$1,042
909	KIPLING858	3B	858	South-East	\$896,000	\$1,044
1209	KIPLING858	3B	858	South-East	\$899,000	\$1,048
1509	KIPLING858	3B	858	South-East	\$900,000	\$1,049
1709	KIPLING858	3B	858	South-East	\$902,000	\$1,051
2209	KIPLING858	3B	858	South-East	\$907,000	\$1,057
2509	KIPLING858	3B	858	South-East	\$909,000	\$1,059
2909	KIPLING858	3B	858	South-East	\$913,000	\$1,064
3209	KIPLING858	3B	858	South-East	\$916,000	\$1,068
3709	KIPLING858	3B	858	South-East	\$920,000	\$1,072
4009*	KIPLING858	3B	858	South-East	\$923,000	\$1,076
4209*	KIPLING858	3B	858	South-East	\$925,000	\$1,078
4509*	KIPLING858	3B	858	South-East	\$927,000	\$1,080
4609*	KIPLING858	3B	858	South-East	\$928,000	\$1,082
5109*	KIPLING858	3B	858	South-East	\$933,000	\$1,087
5305*	KIPLING935	3B	935	North-East	\$975,000	\$1,043

****Prices and Availability Subject to Change. Floor Premiums Vary – Based on Elevation and Views.**

DEPOSIT STRUCTURE:

\$10,000 on Signing (**Bank Draft – Mandatory**)

Balance to **5.0%** in **30** Days

5.0% in **45** 120 Days

2.5% in **60** 300 Days

2.5% in **90** 400 Days

2.5% in **120** 600 Days

2.5% in **270** 720 Days

ALL DEPOSITS MUST BE PROVIDED WITHIN 24 HOURS OF SIGNING.

ALL DEPOSITS TO BE MADE PAYABLE TO “BRATTYS LLP, IN TRUST”

PARKING: Waitlisted

- Priority to 3B Suites (\$95K)

STORAGE LOCKER: Waitlisted

MAINTENANCE FEES:

- Approximately \$0.77/sq. ft.
- BTU, Hydro, Water and Bulk Internet Are Separately Billed

TENTATIVE OCCUPANCY: 2026

Prices Include HST.**



1. EXTENDED DEPOSIT STRUCTURE**

\$10,000 on Signing (Bank Draft- Mandatory)

Balance to 5.0% in 30 Days

5.0% in 45 120 Days

2.5% in 60 300 Days

2.5% in 90 400 Days

2.5% in 120 600 Days

2.5% in 270 720 Days

2. ONE TIME FREE ASSIGNMENT**

- Vendor's Assignment Fee is \$10,000 (Waived)

3. CAPPED DEVELOPMENT CHARGES AND LEVIES**

- 1B+D and Smaller – Capped at ~~\$19,500~~ \$14,500
- 2B and Larger – Capped at ~~\$22,000~~ \$17,000



SALES TEAM

NORRIS LEE
Sr. Sales & Operations Manager*
E: nlee@centrecourt.com

SHALINI KARTHIGESAN
Sr. Sales & Marketing Manager*
E: skarthigesan@centrecourt.com

MARK HASLEY
Sr. Sales Consultant*
E: mhasley@centrecourt.com

* Registered Sales Agent of a third-party brokerage unaffiliated with CentreCourt. Service broker of record services are provided to CentreCourt by an unaffiliated third-party brokerage.

** Please ask a member of our Sales Team for details. Terms, conditions, and fees apply. All rights reserved. Brokers protected. Prices and specifications are subject to change without notice. No representations or warranties, express or implied. E. & O.E.

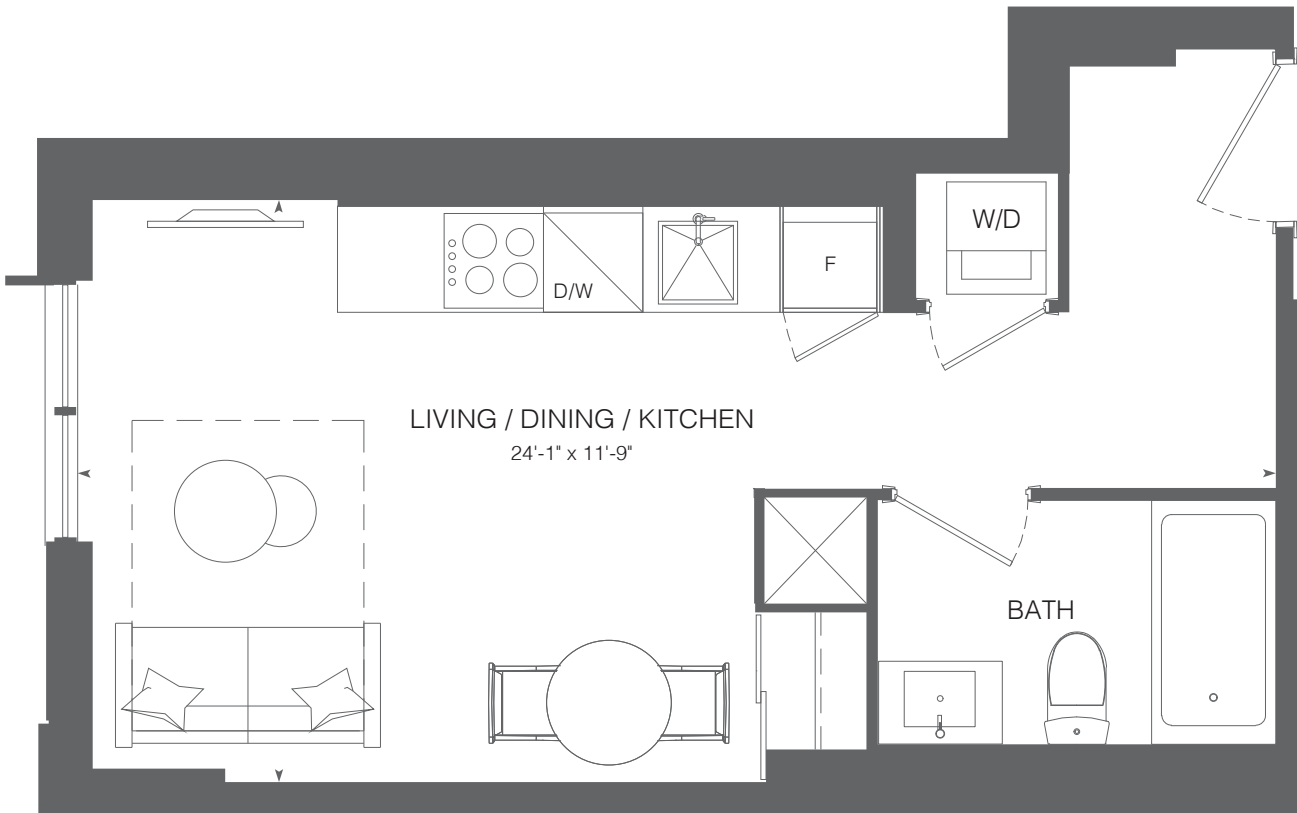


KIPLING STATION CONDOS

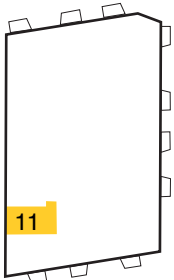


KIPLING343

Studio / 1 Bathroom
Interior 343 SF



Levels 52-PH



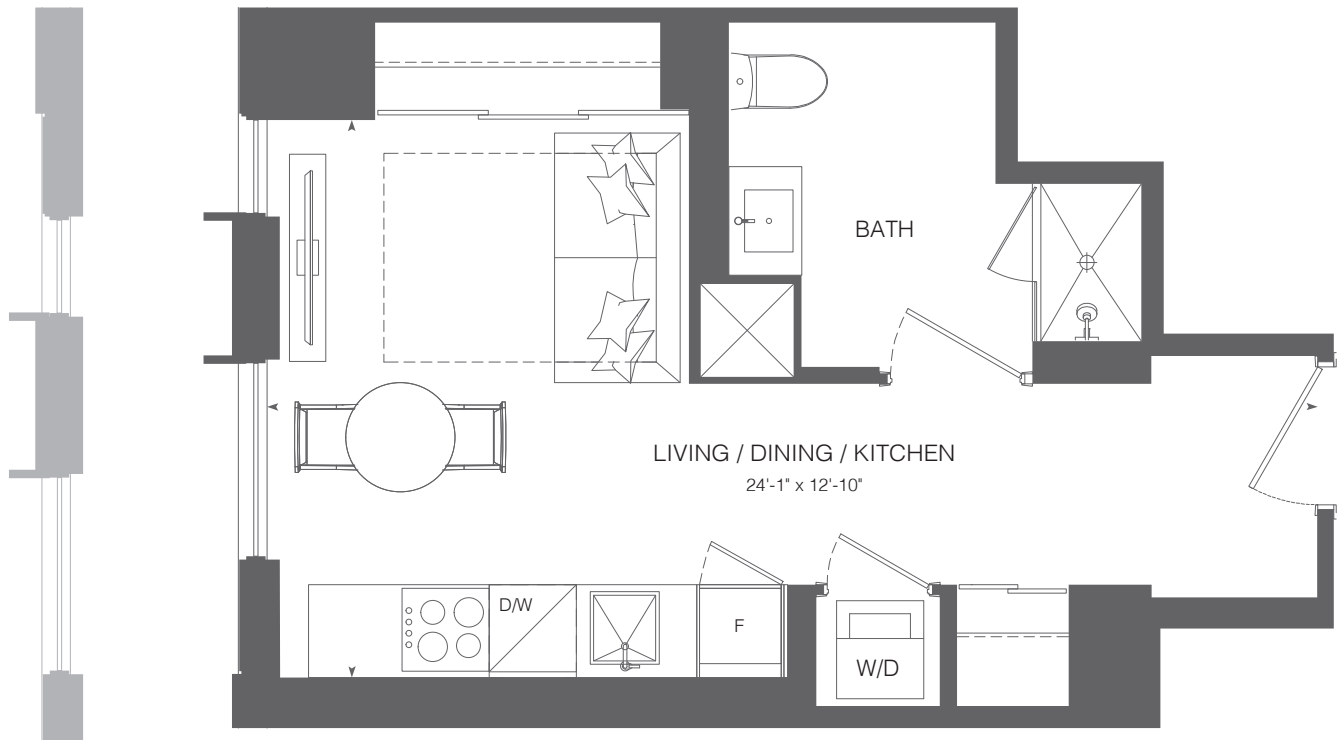
All prices, figures, sizes, specifications and information are subject to change without notice. E. & O.E. All areas and stated dimensions are approximate. Actual usable floor space, living area and square footage may vary from stated floor area. All illustrations are artist's concept only. Actual unit and/or balcony and/or terrace and/or patio may be a reverse mirror image of the plan presented. Exterior building elements may be visible from within unit, including but not limited to frit patterning, mullion/metal panel placements, or other visual treatments. Balconies and/or terraces and/or patios may include planters and/or trees and/or gardens. Units may include bulkheads and/or angled columns. The purchase price does not include any furniture. © 2023 CentreCourt Developments. All rights reserved.

KIPLING STATION CONDOS

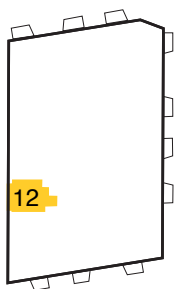
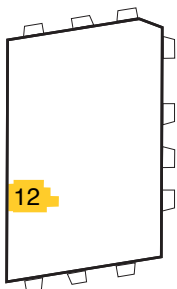


KIPLING363

Studio / 1 Bathroom
Interior 363 SF



Levels 15-29 Levels 6-12, 30-PH



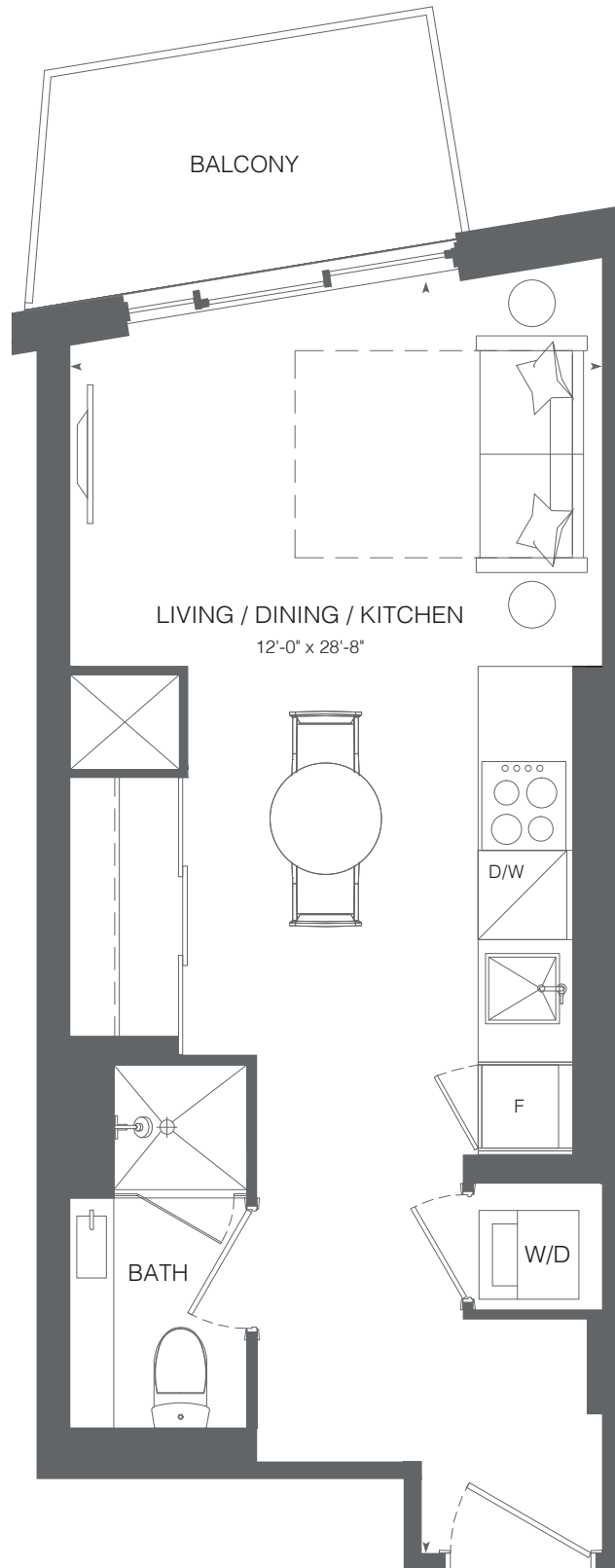
All prices, figures, sizes, specifications and information are subject to change without notice. E. & O.E. All areas and stated dimensions are approximate. Actual usable floor space, living area and square footage may vary from stated floor area. All illustrations are artist's concept only. Actual unit and/or balcony and/or terrace and/or patio may be a reverse mirror image of the plan presented. Exterior building elements may be visible from within unit, including but not limited to frit patterning, mullion/metal panel placements, or other visual treatments. Balconies and/or terraces and/or patios may include planters and/or trees and/or gardens. Units may include bulkheads and/or angled columns. The purchase price does not include any furniture. © 2023 CentreCourt Developments. All rights reserved.

KIPLING STATION CONDOS

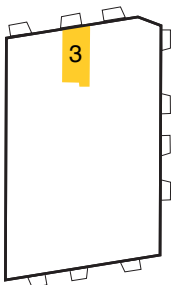


KIPLING363B

Studio / 1 Bathroom
Interior 363 SF



Levels 52-PH



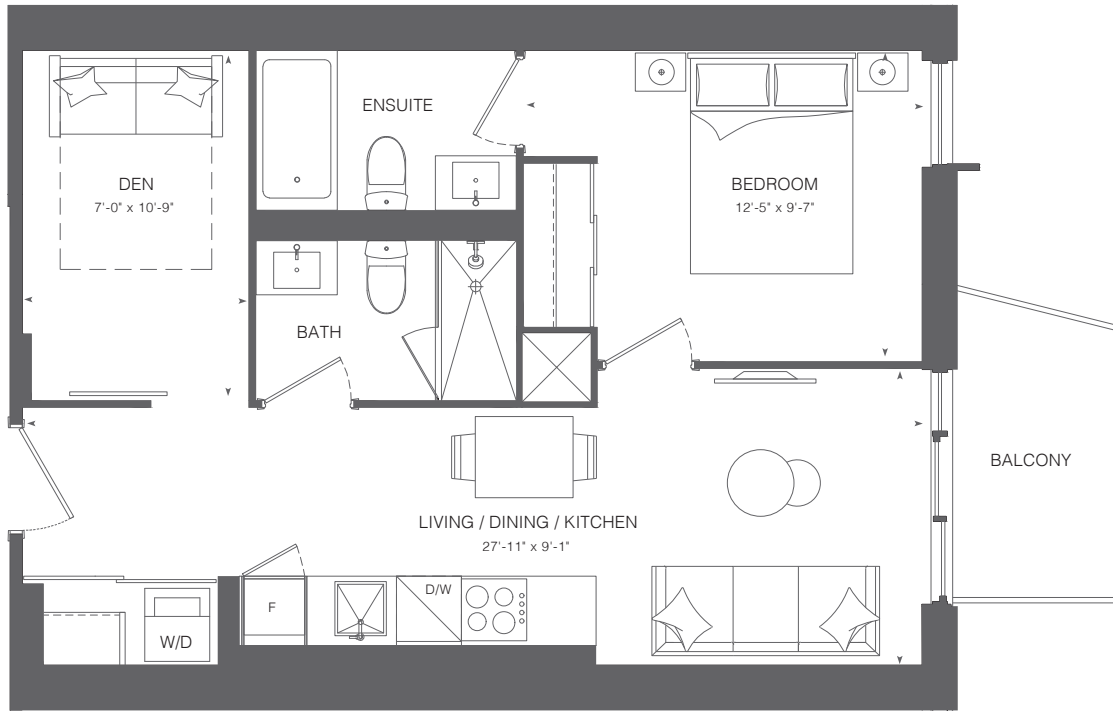
All prices, figures, sizes, specifications and information are subject to change without notice. E. & O.E. All areas and stated dimensions are approximate. Actual usable floor space, living area and square footage may vary from stated floor area. All illustrations are artist's concept only. Actual unit and/or balcony and/or terrace and/or patio may be a reverse mirror image of the plan presented. Exterior building elements may be visible from within unit, including but not limited to frit patterning, mullion/metal panel placements, or other visual treatments. Balconies and/or terraces and/or patios may include planters and/or trees and/or gardens. Units may include bulkheads and/or angled columns. The purchase price does not include any furniture. © 2023 CentreCourt Developments. All rights reserved.

KIPLING STATION CONDOS



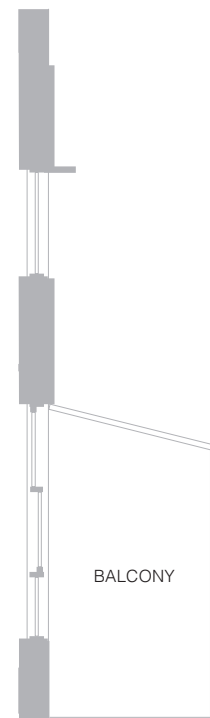
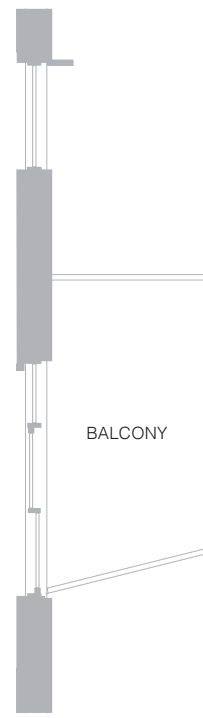
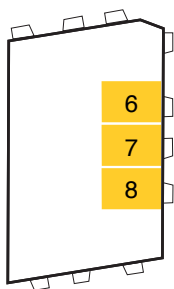
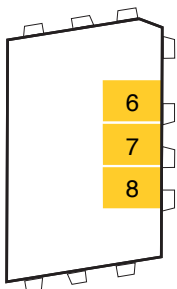
KIPLING597

1 Bedroom + Den / 2 Bathrooms
Interior 597 SF



Levels 15-29

Levels 6-12, 30-PH



All prices, figures, sizes, specifications and information are subject to change without notice. E. & O.E. All areas and stated dimensions are approximate. Actual usable floor space, living area and square footage may vary from stated floor area. All illustrations are artist's concept only. Actual unit and/or balcony and/or terrace and/or patio may be a reverse mirror image of the plan presented. Exterior building elements may be visible from within unit, including but not limited to frit patterning, mullion/metal panel placements, or other visual treatments. Balconies and/or terraces and/or patios may include planters and/or trees and/or gardens. Units may include bulkheads and/or angled columns. The purchase price does not include any furniture. © 2023 CentreCourt Developments. All rights reserved.

KIPLING STATION CONDOS

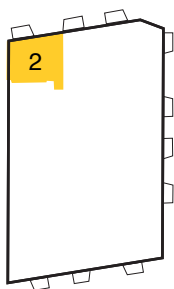
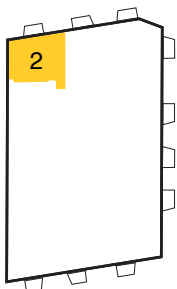


KIPLING652

2 Bedrooms / 1 Bathroom
Interior 652 SF



Levels 15-29 Levels 6-12, 30-PH



All prices, figures, sizes, specifications and information are subject to change without notice. E. & O.E. All areas and stated dimensions are approximate. Actual usable floor space, living area and square footage may vary from stated floor area. All illustrations are artist's concept only. Actual unit and/or balcony and/or terrace and/or patio may be a reverse mirror image of the plan presented. Exterior building elements may be visible from within unit, including but not limited to frit patterning, mullion/metal panel placements, or other visual treatments. Balconies and/or terraces and/or patios may include planters and/or trees and/or gardens. Units may include bulkheads and/or angled columns. The purchase price does not include any furniture. © 2023 CentreCourt Developments. All rights reserved.

KIPLING STATION CONDOS



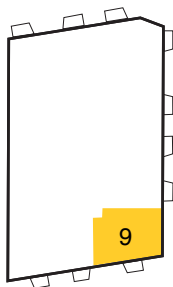
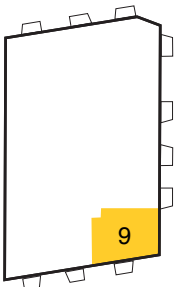
KIPLING858

3 Bedrooms / 2 Bathrooms
Interior 858 SF



Levels 15-29

Levels 6-12, 30-PH



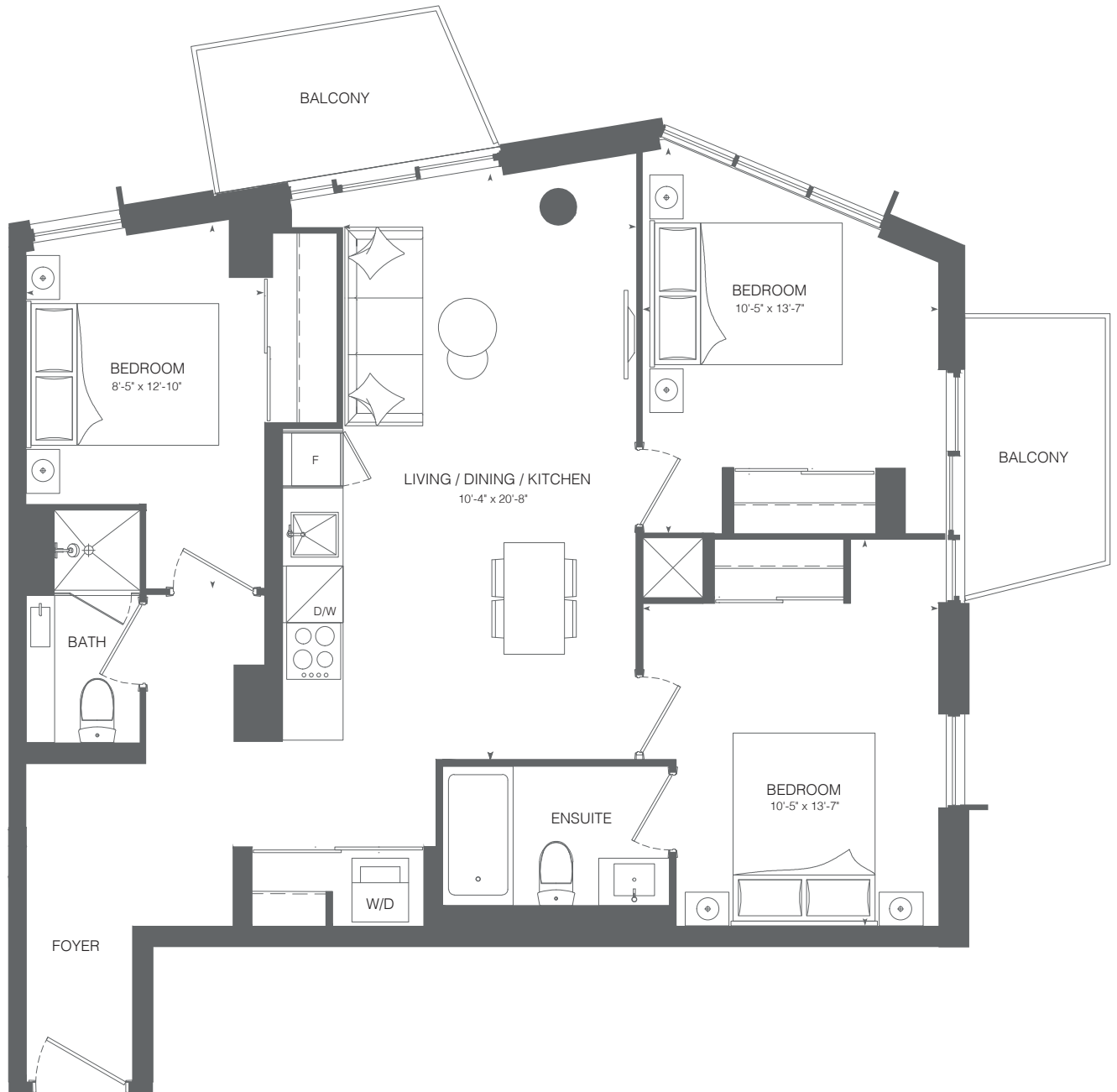
All prices, figures, sizes, specifications and information are subject to change without notice. E. & O.E. All areas and stated dimensions are approximate. Actual usable floor space, living area and square footage may vary from stated floor area. All illustrations are artist's concept only. Actual unit and/or balcony and/or terrace and/or patio may be a reverse mirror image of the plan presented. Exterior building elements may be visible from within unit, including but not limited to frit patterning, mullion/metal panel placements, or other visual treatments. Balconies and/or terraces and/or patios may include planters and/or trees and/or gardens. Units may include bulkheads and/or angled columns. The purchase price does not include any furniture. © 2023 CentreCourt Developments. All rights reserved.

KIPLING STATION CONDOS

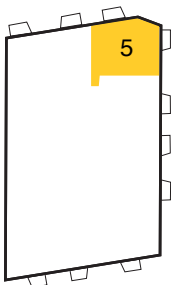


KIPLING935

3 Bedrooms / 2 Bathrooms
Interior 935 SF



Levels 52-PH



All prices, figures, sizes, specifications and information are subject to change without notice. E. & O.E. All areas and stated dimensions are approximate. Actual usable floor space, living area and square footage may vary from stated floor area. All illustrations are artist's concept only. Actual unit and/or balcony and/or terrace and/or patio may be a reverse mirror image of the plan presented. Exterior building elements may be visible from within unit, including but not limited to frit patterning, mullion/metal panel placements, or other visual treatments. Balconies and/or terraces and/or patios may include planters and/or trees and/or gardens. Units may include bulkheads and/or angled columns. The purchase price does not include any furniture. © 2023 CentreCourt Developments. All rights reserved.