

JOYA

ON THE QUEENSWAY



THE BUILDING

1045 THE QUEENSWAY

12 STOREYS | 321 UNITS | 338 SF – 1,450 SF

AMENITIES

14,000 SF of amenity space

GROUND FLOOR

- Lobby & Lounge
- Pet Wash

SECOND FLOOR

- Workshop/Craft Room
- Children's Play Area
- Gear Shop

ROOFTOP

- Dining & Lounge
- BBQ
- Terrace
- Dog Run

THIRD FLOOR

- Games Lounge
- Theatre Room
- Party Room
- Social Lounge

Fitness Centre with:

- Virtual Training Room
- Spin Room
- Treatment Room
- Yoga Room

NEIGHBOURHOOD AMENITIES:

CF Sherway Gardens – 6 min 🚗 / 12 min 🚲

Costco – 4 min 🚗

Humber Bay – 8 min 🚗 / 12 min 🚲

High Park – 7 min 🚗 / 20 min 🚲

TRANSIT:

Kipling Transit Hub – 6 min 🚗 / 9 min 🚲

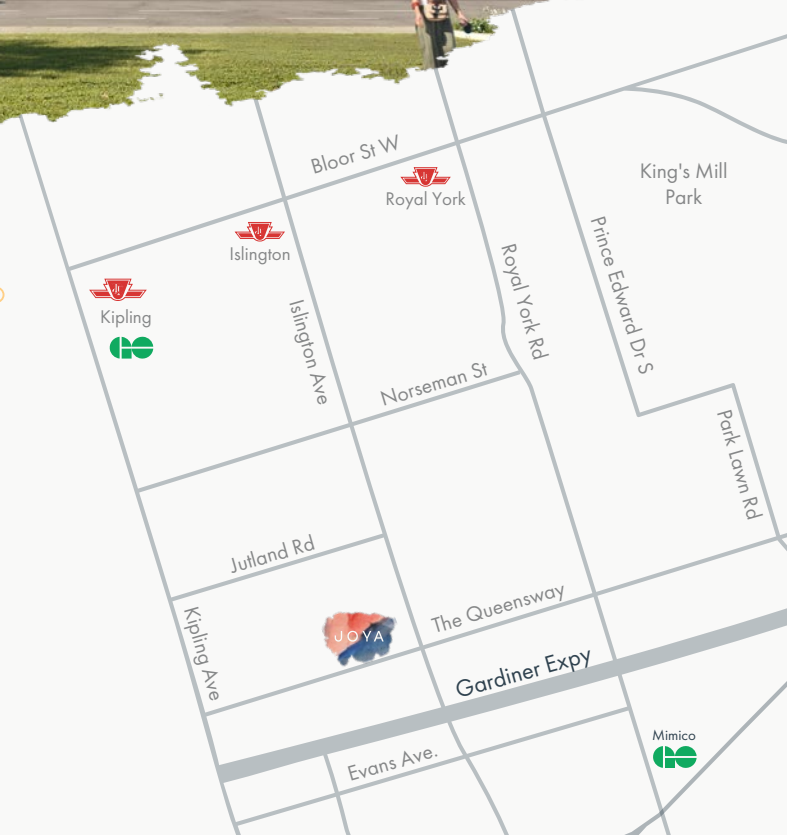
- Connects to TTC Subway Line 1 and Buses, GO Transit, and MiWay

Mimico GO – 7 min 🚗 / 11 min 🚲

- Get to Union in 15 min

Gardiner Expy. – 1 min 🚗

- Connect to 427 – 5 min 🚗 and 401 – 10 min 🚗



JOYACONDOS.COM

Rendering is artists' concepts. Map is not to scale. Specifications subject to change without notice. E.&O.E.

MARLIN
SPRING
DEVELOPMENTS

Marlin Spring Developments is an award-winning development company, building low-rise and high-rise communities throughout Toronto and the GTA. All their developments share a common goal — **Building for You.**

THE TEAM

Greybrook

Greybrook Realty Partners is a leading Toronto-based real estate private equity firm focused on investments in residential development and value-add assets.